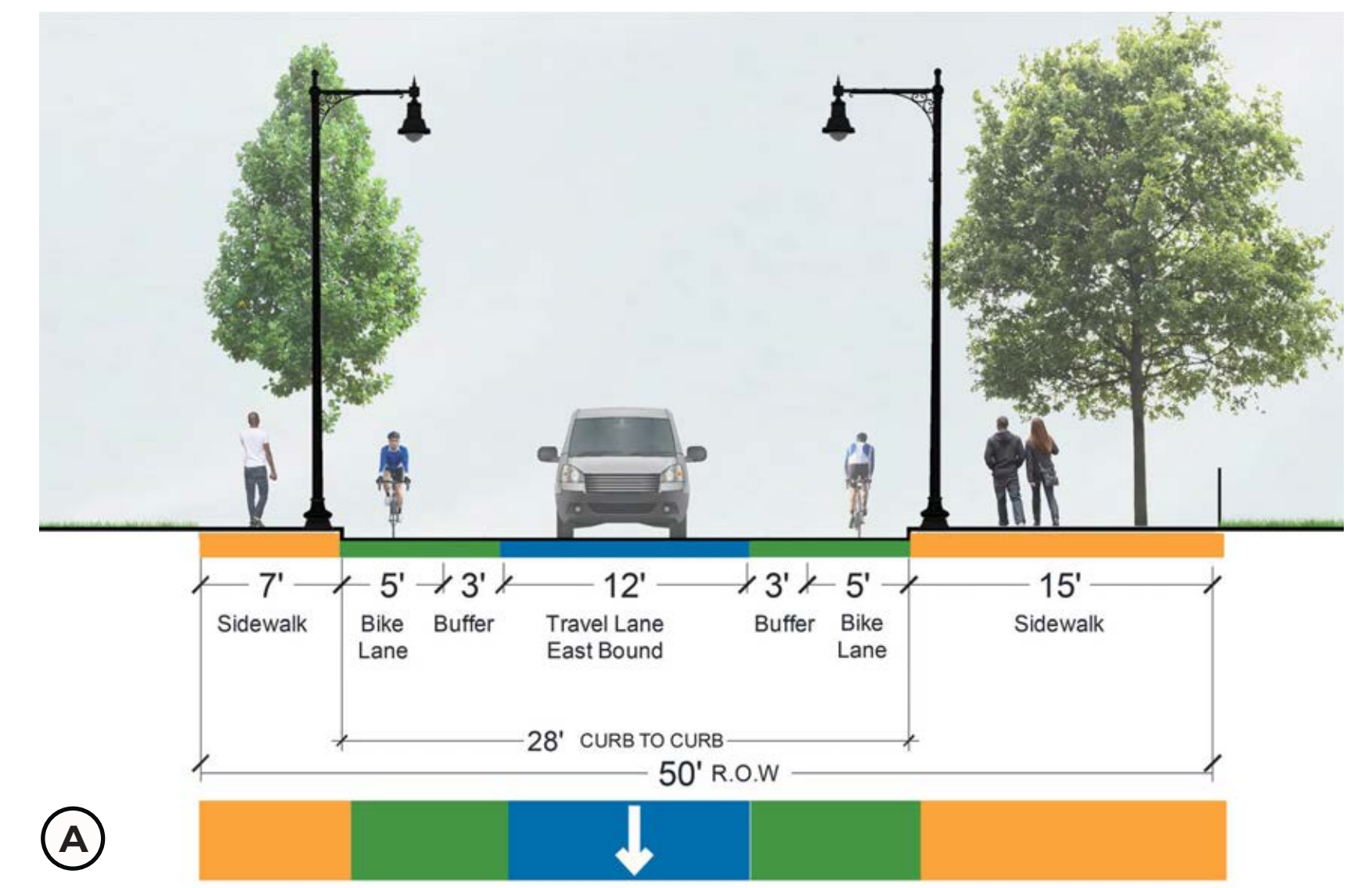


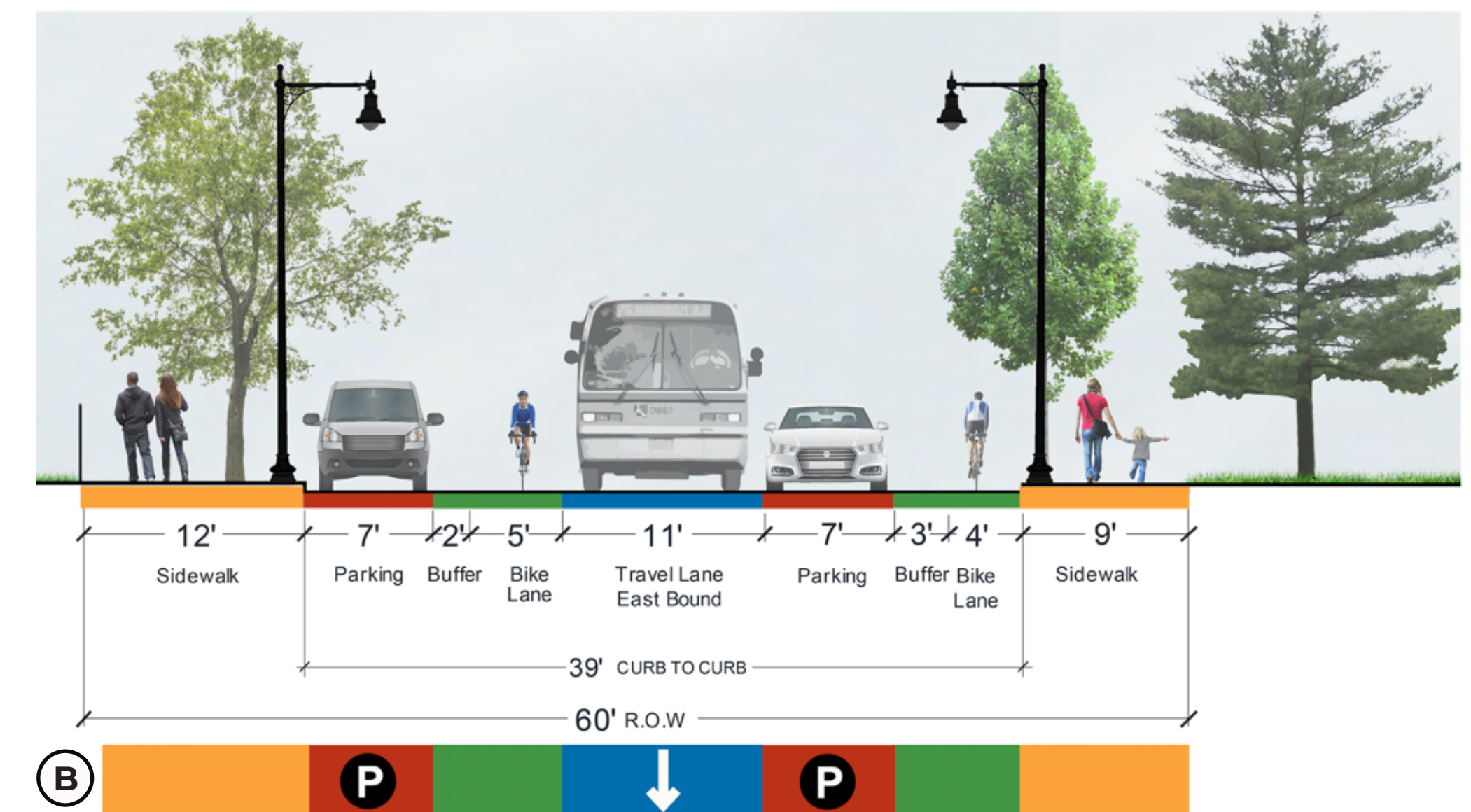
DESIGN PLANS



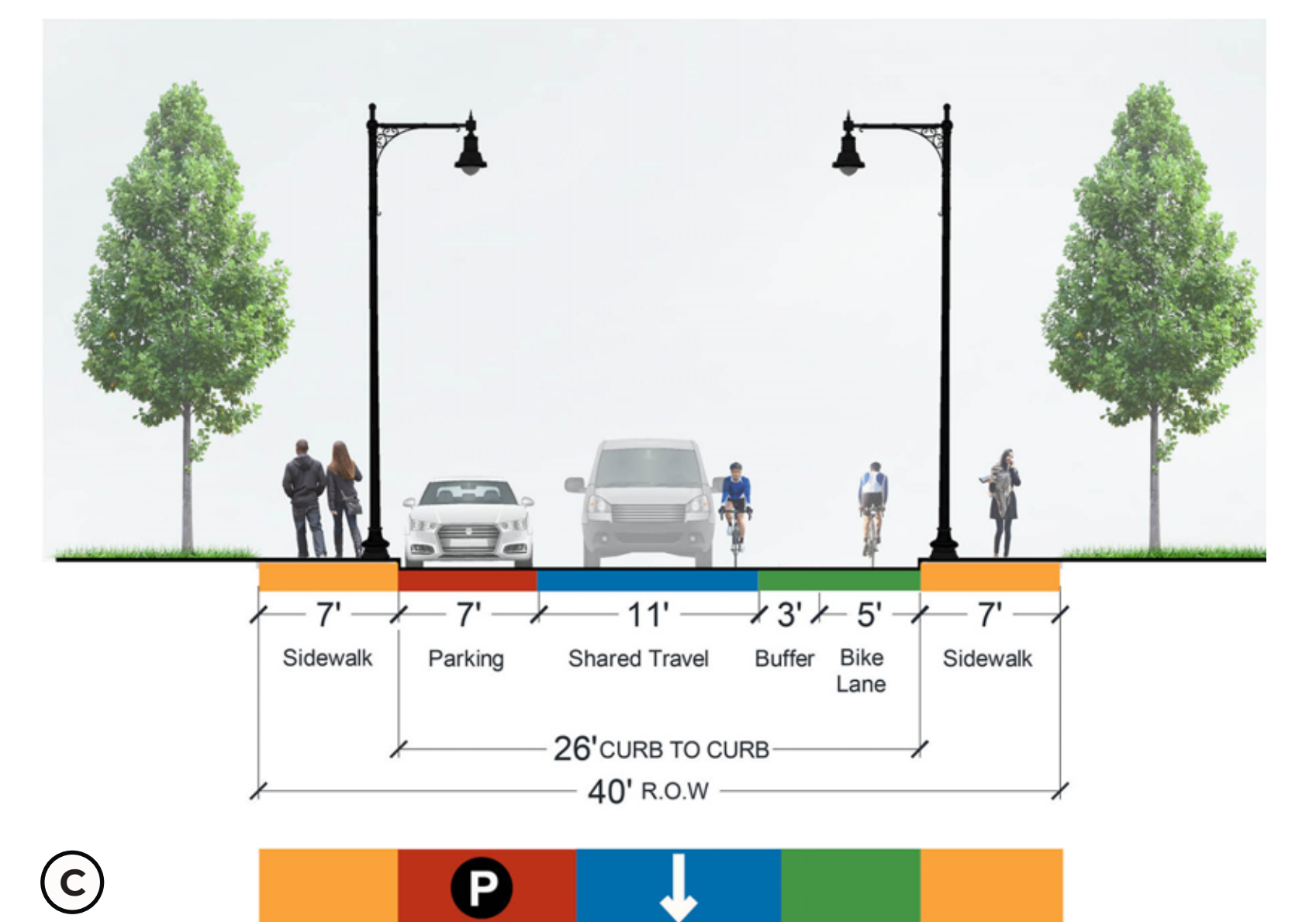
1" = 30'



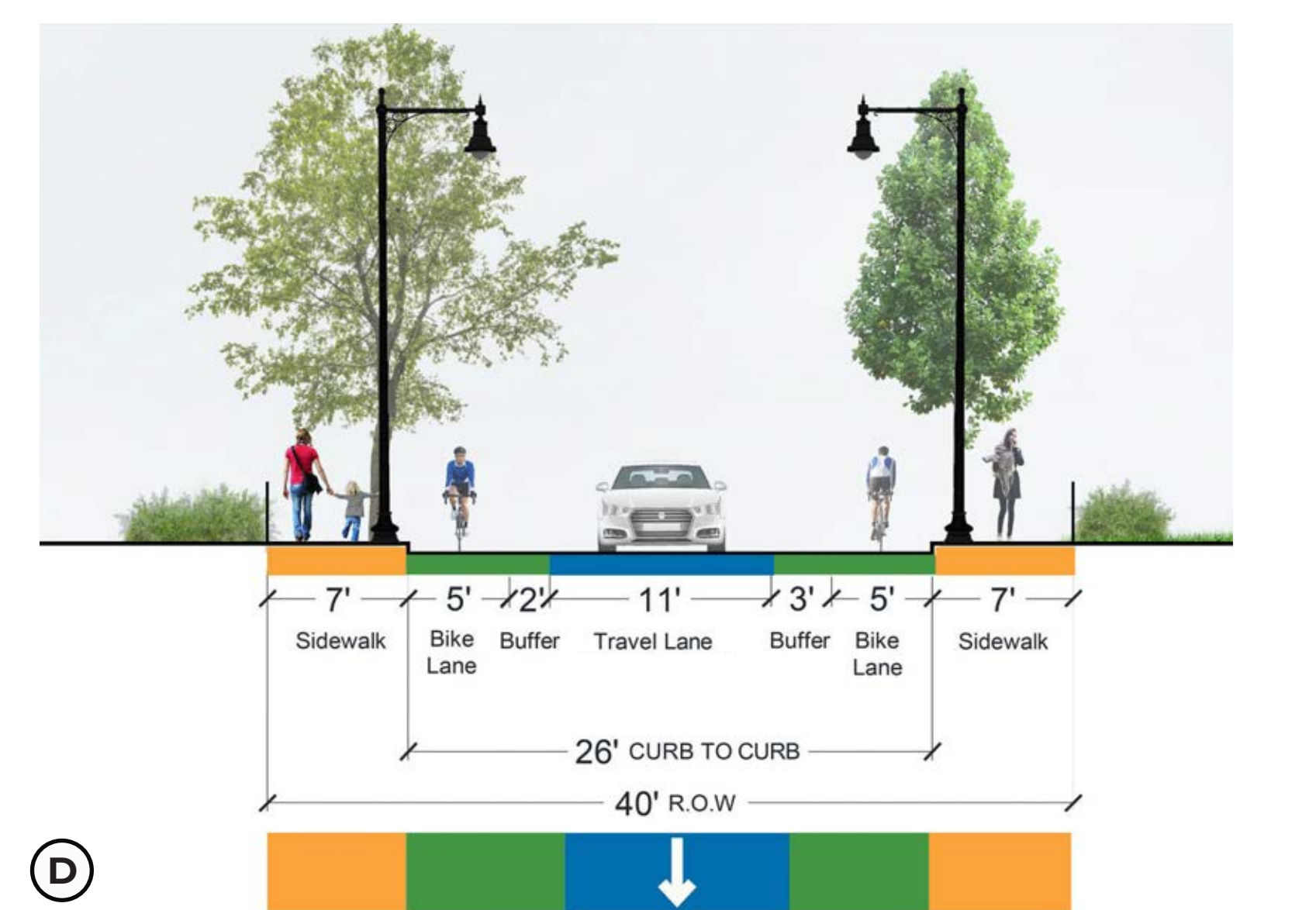
A



B



C



D



RUGGLES STREET RECONSTRUCTION

Project Update Meeting

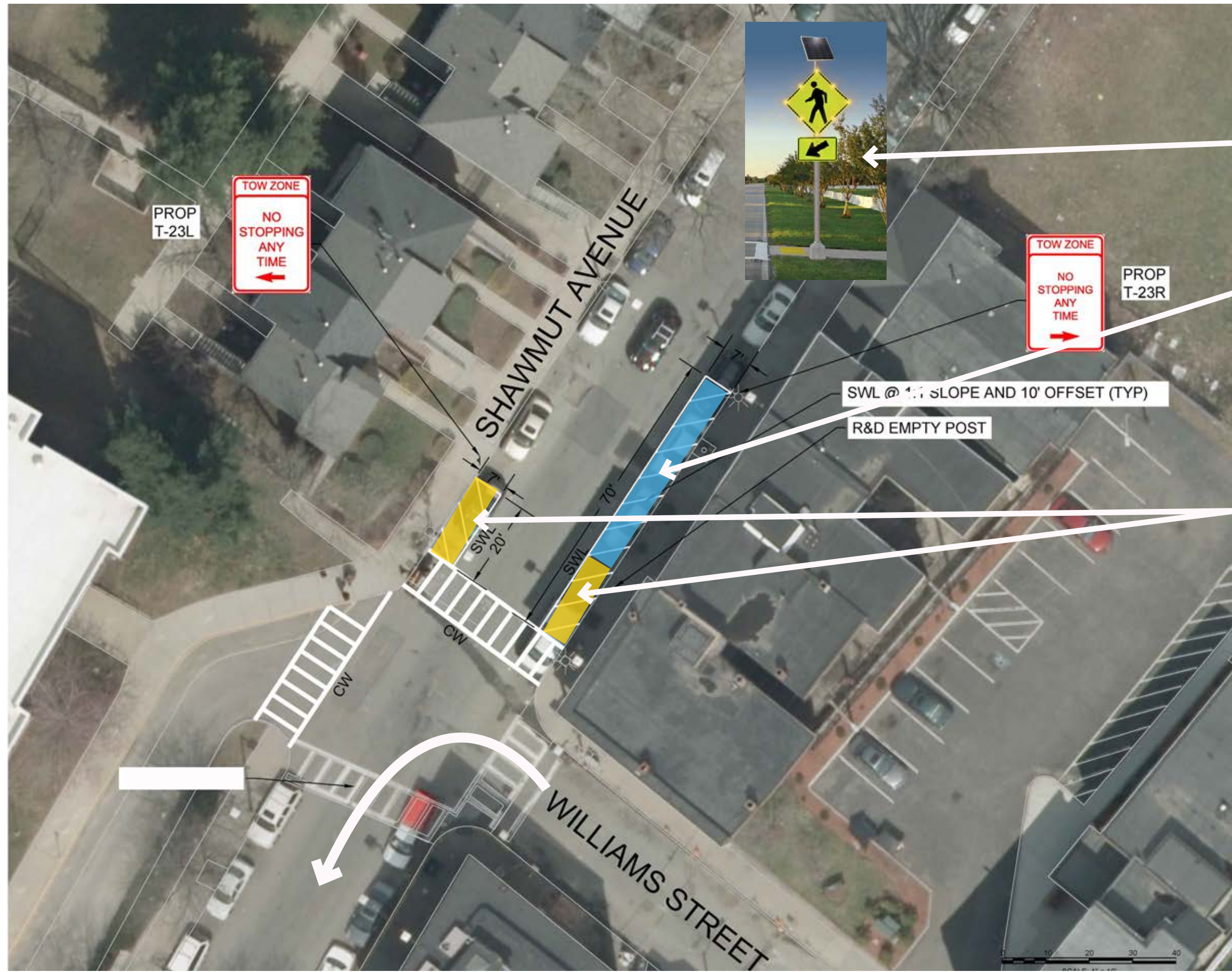
September 4, 2019

City Of Boston
Martin J. Walsh, Mayor



TRAFFIC FLOW

IMPROVEMENTS TO ACCOMMODATE ONE-WAY FLOW Williams / Shawmut

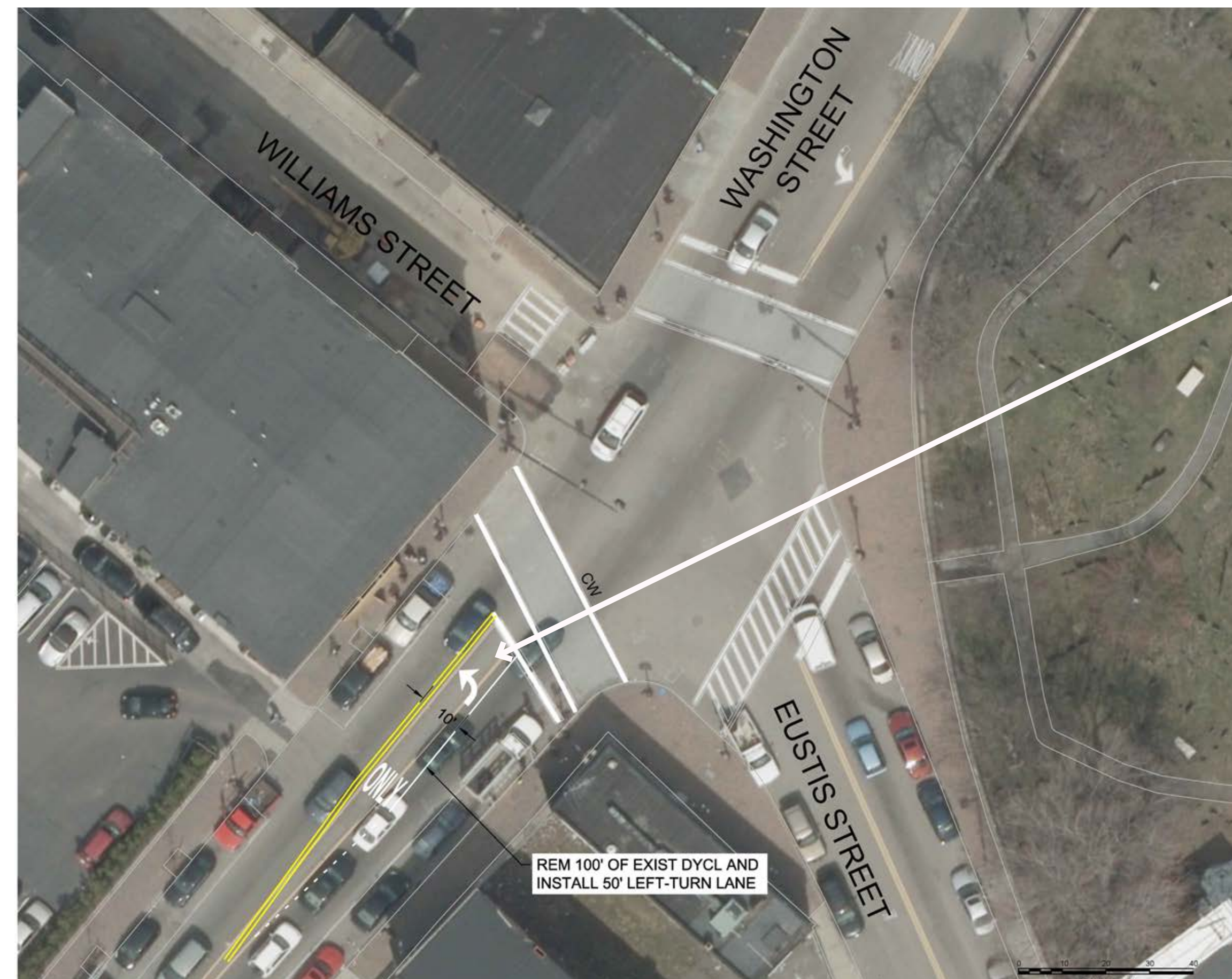


Provide improved pedestrian signage with actuated LED warning lights.

Improve sight distance by removing three parking spaces on Shawmut Avenue.

Remove two parking spaces for relocated crosswalk.

Washington/Williams/Eustis

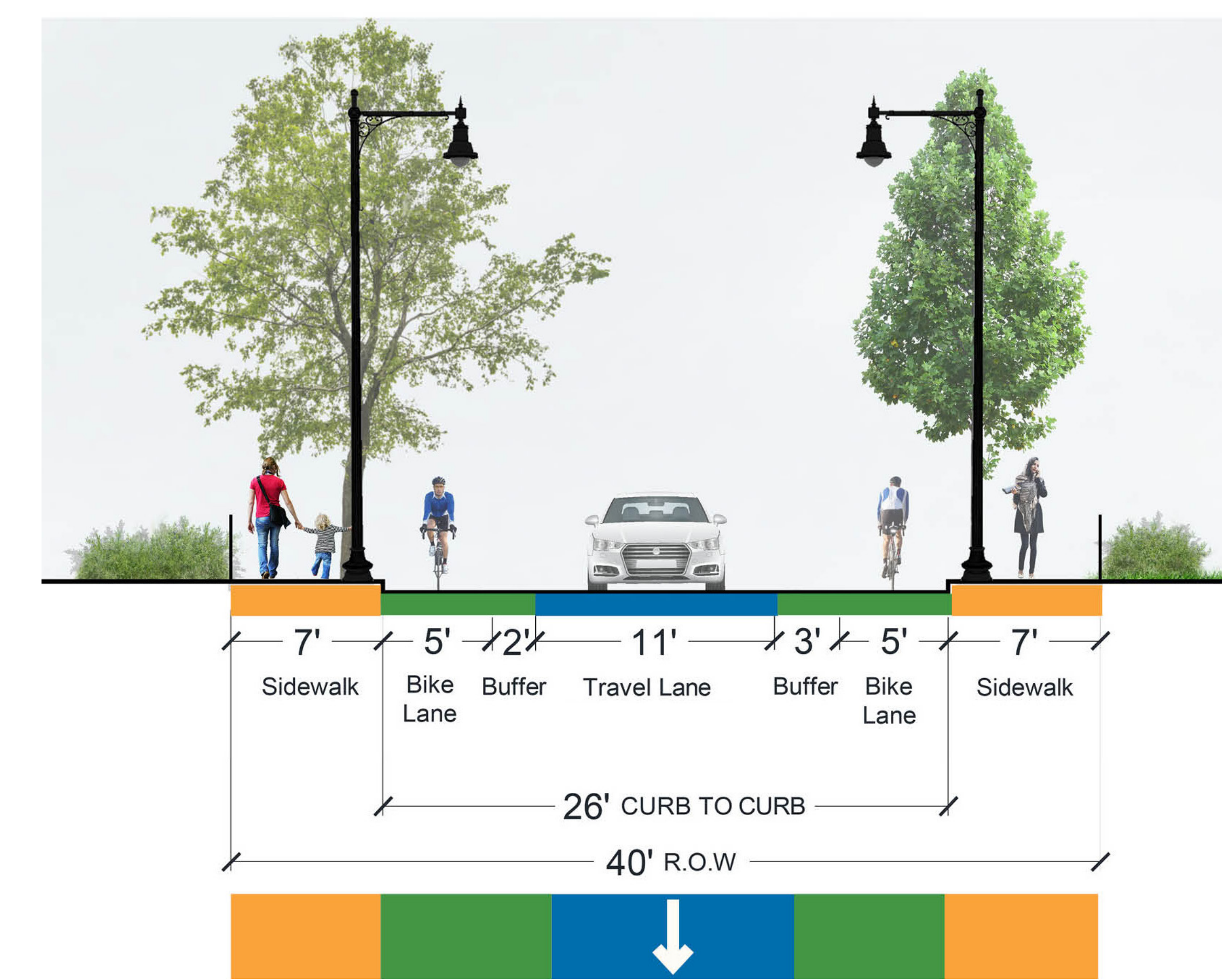


Add left turn lane on Washington Street in the northbound direction to accommodate turns and improve traffic flow on Washington Street.

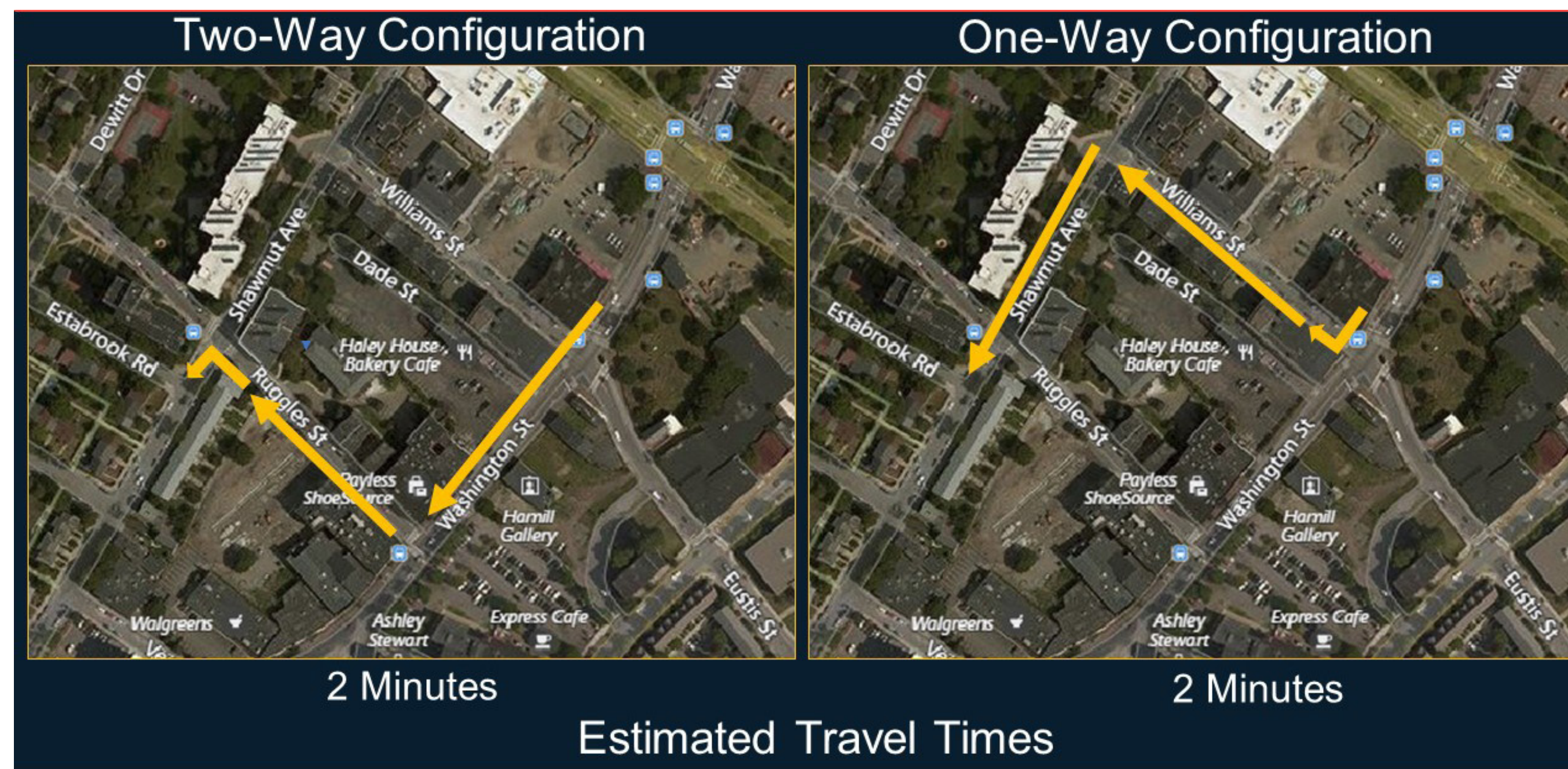
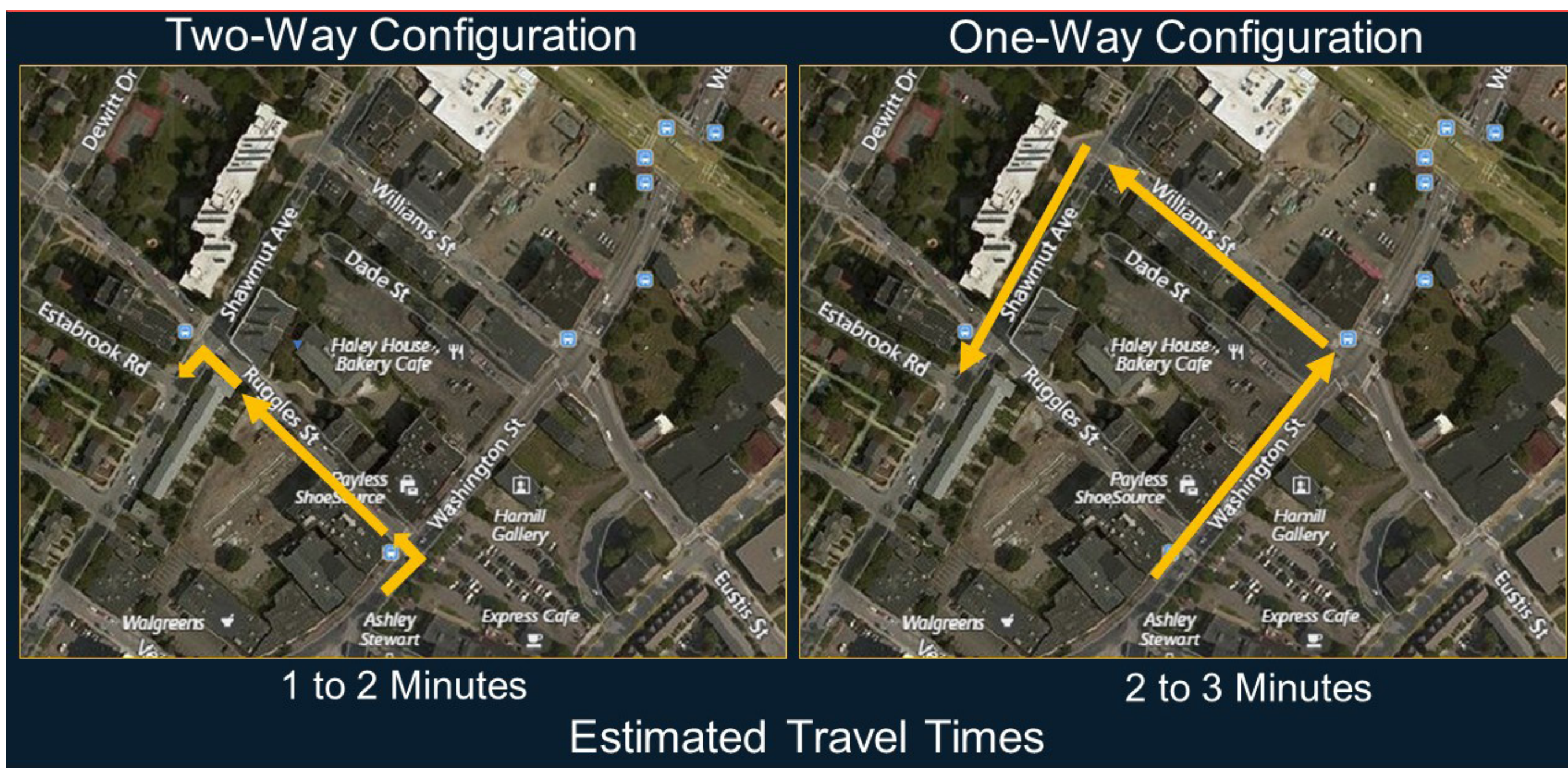
ONE-WAY PLAN



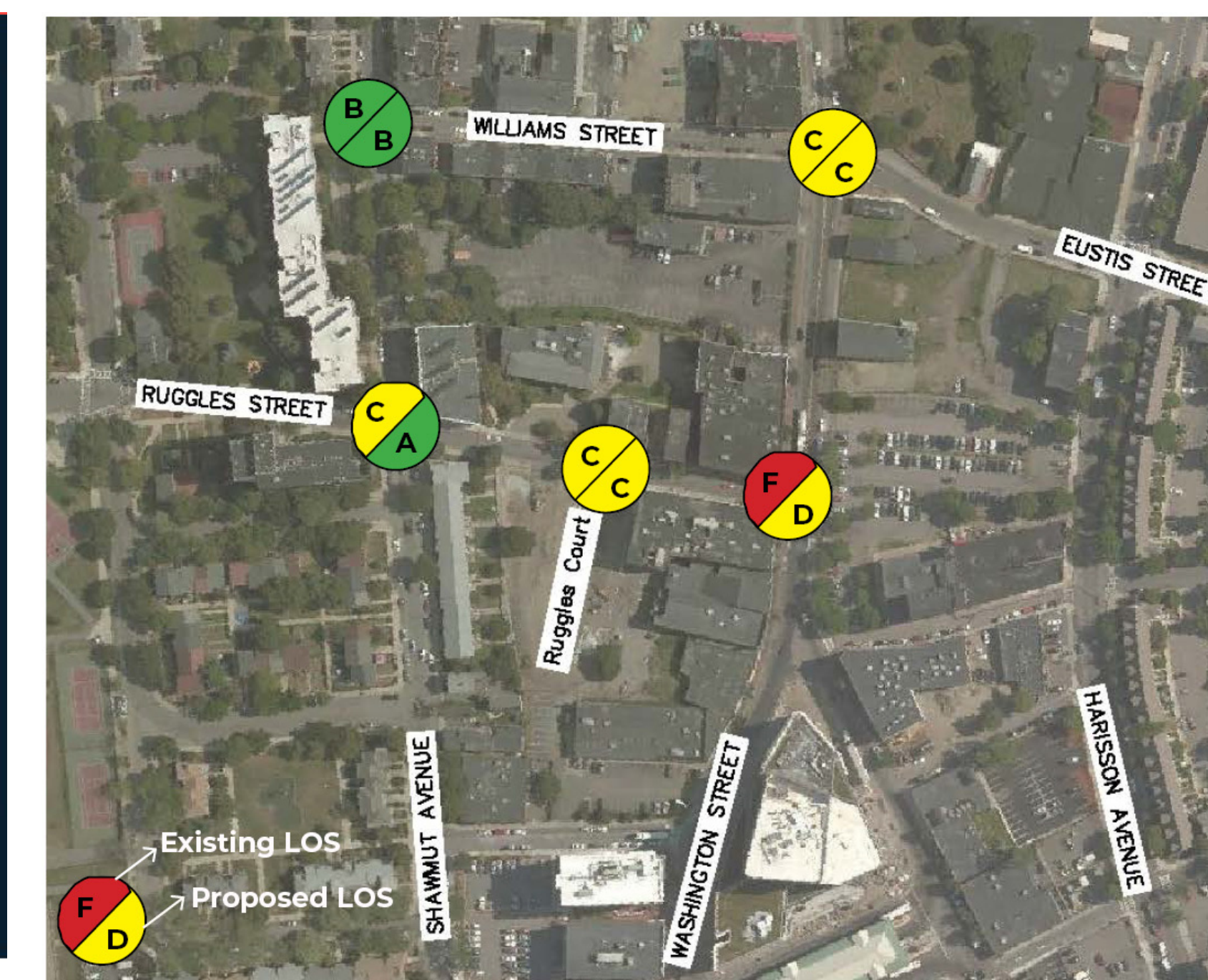
ONE-WAY SECTION



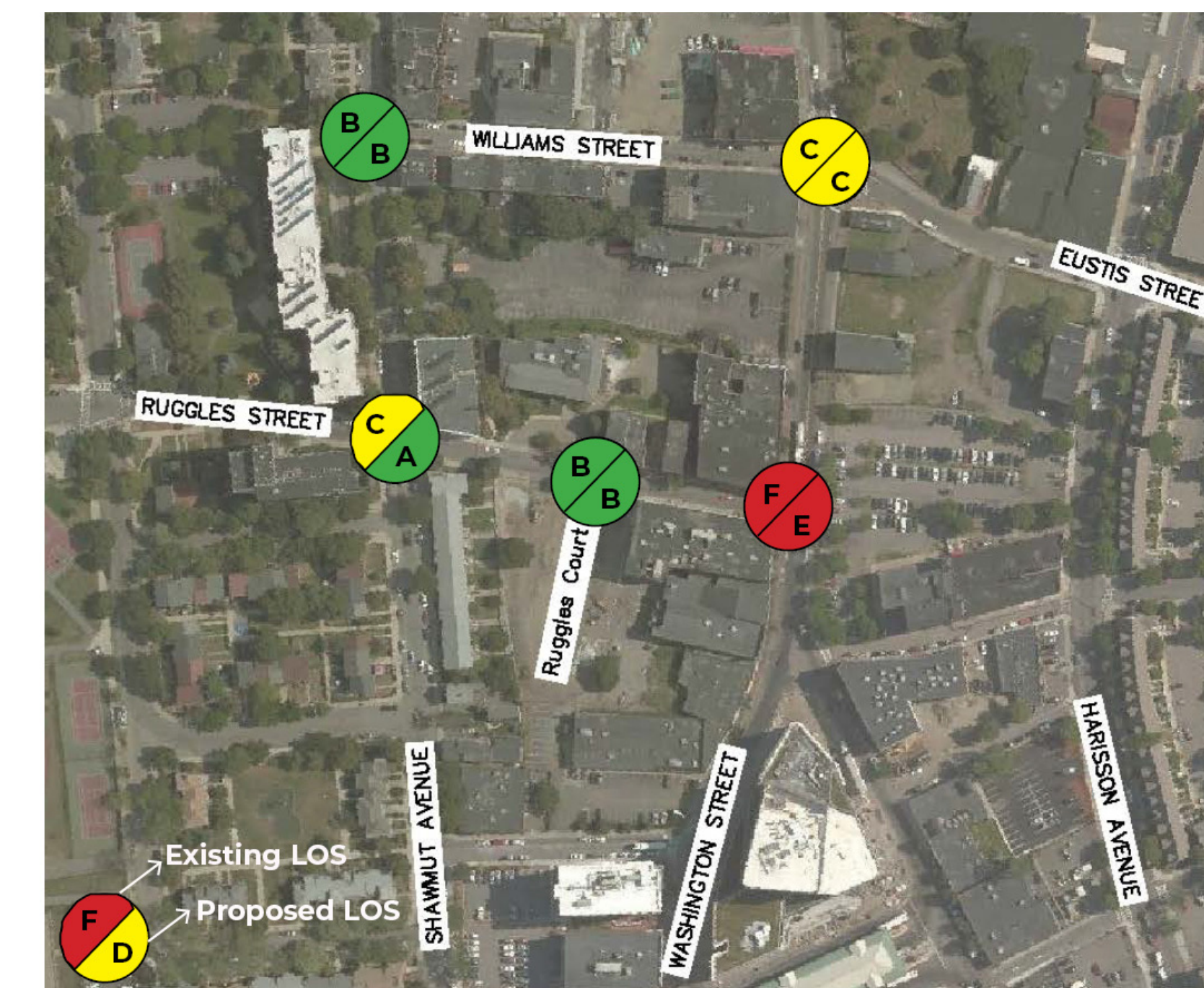
TRAVEL TIME COMPARISON



AM OPERATIONS



PM OPERATIONS



LOS = Level of Service. LOS measures delay and speed, which reflects the relative ease of traffic flow on a scale of A to F, like letter grades in school, where LOS 'A' represents minimal delay and 'F' represents excessive delay.



RUGGLES STREET RECONSTRUCTION

Project Update Meeting
September 4, 2019



City Of Boston
Martin J. Walsh, Mayor



PUBLIC ART: STREETSCAPE

SEATING

Thematic Seating



Flexible Seating



Classic Seating



SIGNAGE

Wayfinding / Historic Interpretive Signs



Interpretive Signs w/ Integral Lighting / Tactile Features



Banners



GATEWAY FEATURES

Installation in Fencing



Vertical Elements



Paving / Thematic Patterns

