



Improvements to
EDWARDS PLAYGROUND



September 20, 2018
Boston Parks and Recreation



AGENDA

1

PROJECT TEAM INTRODUCTION

2

PROJECT OVERVIEW

3

PRESENTATION

4

LISTENING & DISCUSSION

5

CLOSING REMARKS & NEXT STEPS

PROJECT TEAM

Allison Perlman

Project Manager

allison.perlman@boston.gov or 617-961-3035

Marchelle Jacques-Yarde

Outreach Coordinator, External Affairs

marchelle.jacques-yarde@boston.gov or 617-961-3006

Kaki Martin, Principal

Sharon Komarow, Associate

Luis Perez, Designer

Klopfert Martin Design Group

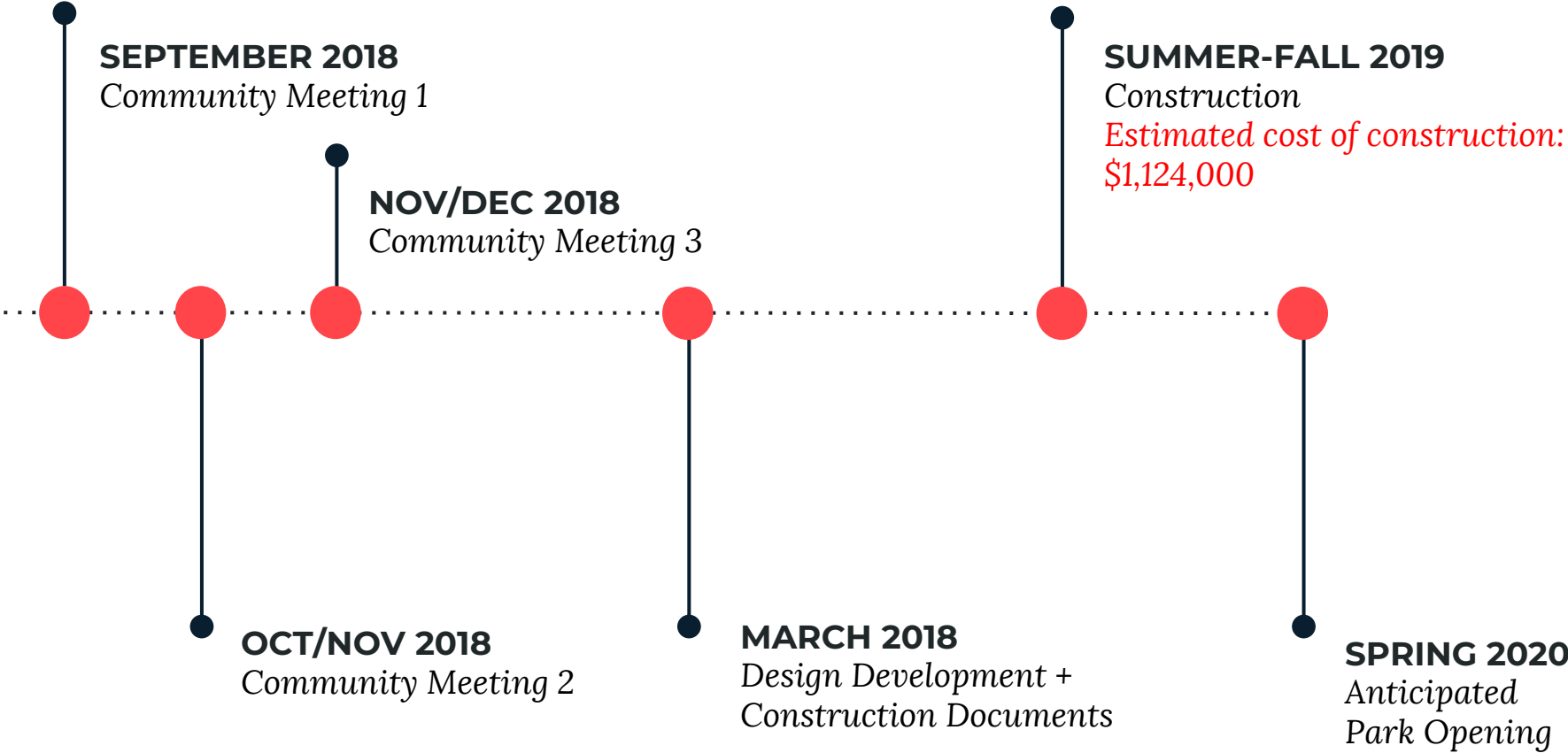
Quinlan Locke

Office of Neighborhood Services

quinlan.locke@boston.gov or 617-635-3549



PROJECT SCHEDULE & FUNDING





City of Boston
Priorities

Safety Guidelines+
Regulatory
Guidelines

**PARK
DESIGN**

Parks + Recreation
Goals

Community
Input

CITY OF BOSTON PRIORITIES

- **Expanding walkable access to parks**
- **Addressing equity**
- **Climate resilience**
- **Health**
- **Housing and community building**



PARK & RECREATION GOALS

- Accessible and available to all
- Diverse, balanced, and efficient mix of uses
- Meaningful and inclusive community engagement
- Adaptive and resilient landscapes
- Promote connections



THE **5** ELEMENTS OF PLAY



SOCIAL/ EMOTIONAL

COOPERATION, DRAMATIC +
IMAGINATIVE PLAY



SEATING + TABLE AREAS,
THEMATIC PLAY ELEMENTS
(SHIPS), PLAY HOUSES

PHYSICAL

GROSS MOTOR/ FINE MOTOR SKILLS,
FLEXIBILITY, ACCESSIBILITY,
HEALTHY RISK + VARIETY



DISH SWINGS, MOVEABLE
OBJECTS, SWINGS, MONKEY
BARS, BALANCE

SENSORY

TOUCH, VISUAL, AUDITORY, SMELL
VESTIBULAR, PROPRIOCEPTIVE +
INTEROCEPTIVE



PUSH/ PULL ELEMENTS
WATER ELEMENTS, VARIED
TEXTURES + COLORS, SPINNING,
MOVEABLE OBJECTS, ROCKING

COGNITIVE

CREATIVITY, SENSE OF
ACCOMPLISHMENT, PROBLEM-
SOLVING, CAUSE + EFFECT, RISK
ASSESSMENT



INTERACTIVE WATER
ELEMENTS, ROPE CLIMBER,
LINKED PLAY ELEMENTS

COMMUNICATION

DEVELOPMENT OF RECEPTIVE +
EXPRESSIVE LANGUAGE



TALK TUBES, SLIDES, THEMATIC
PLAY ELEMENTS, TRIKE TRACK,
SEE SAWS

CONTEXT

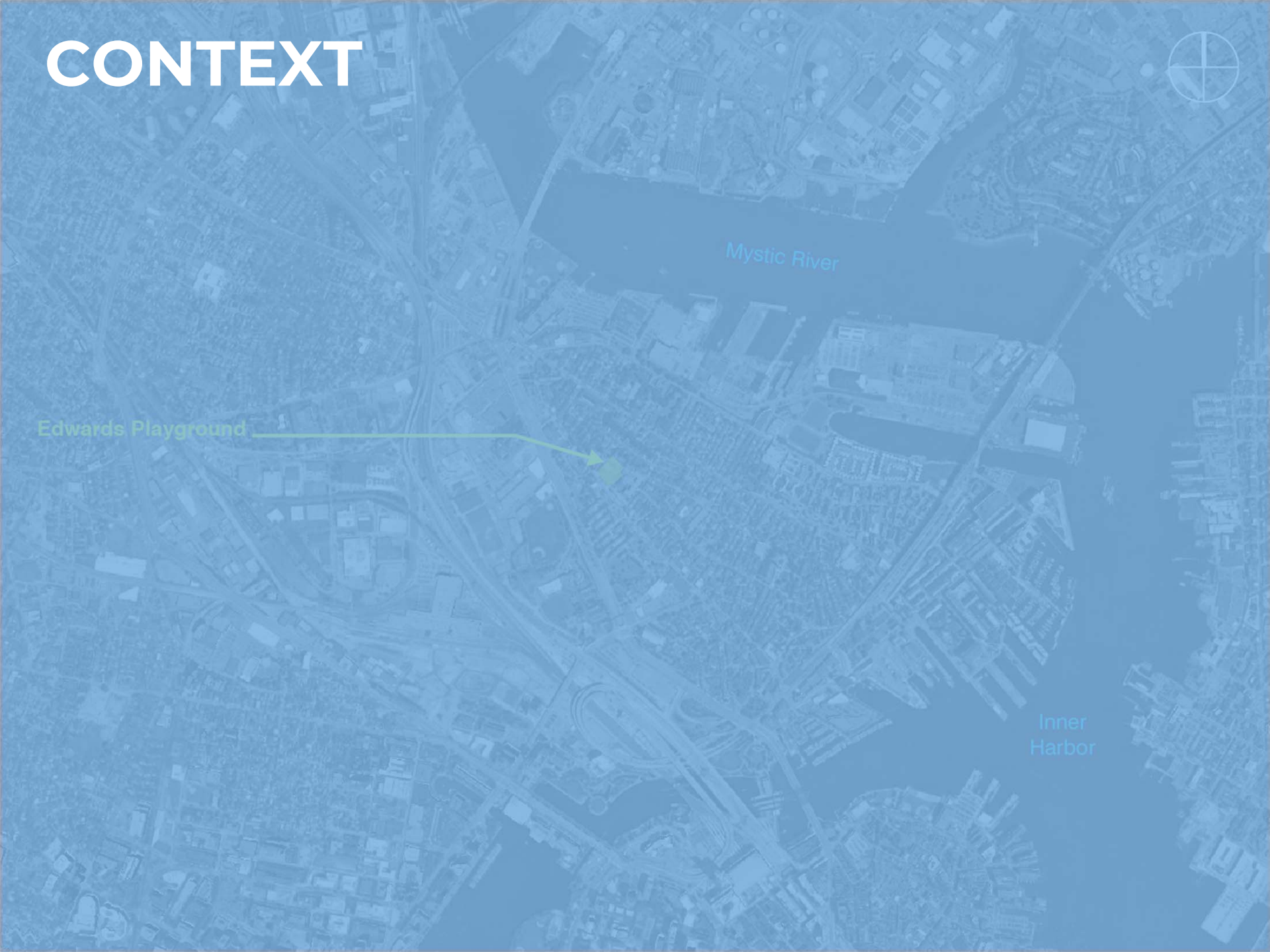


Mystic River

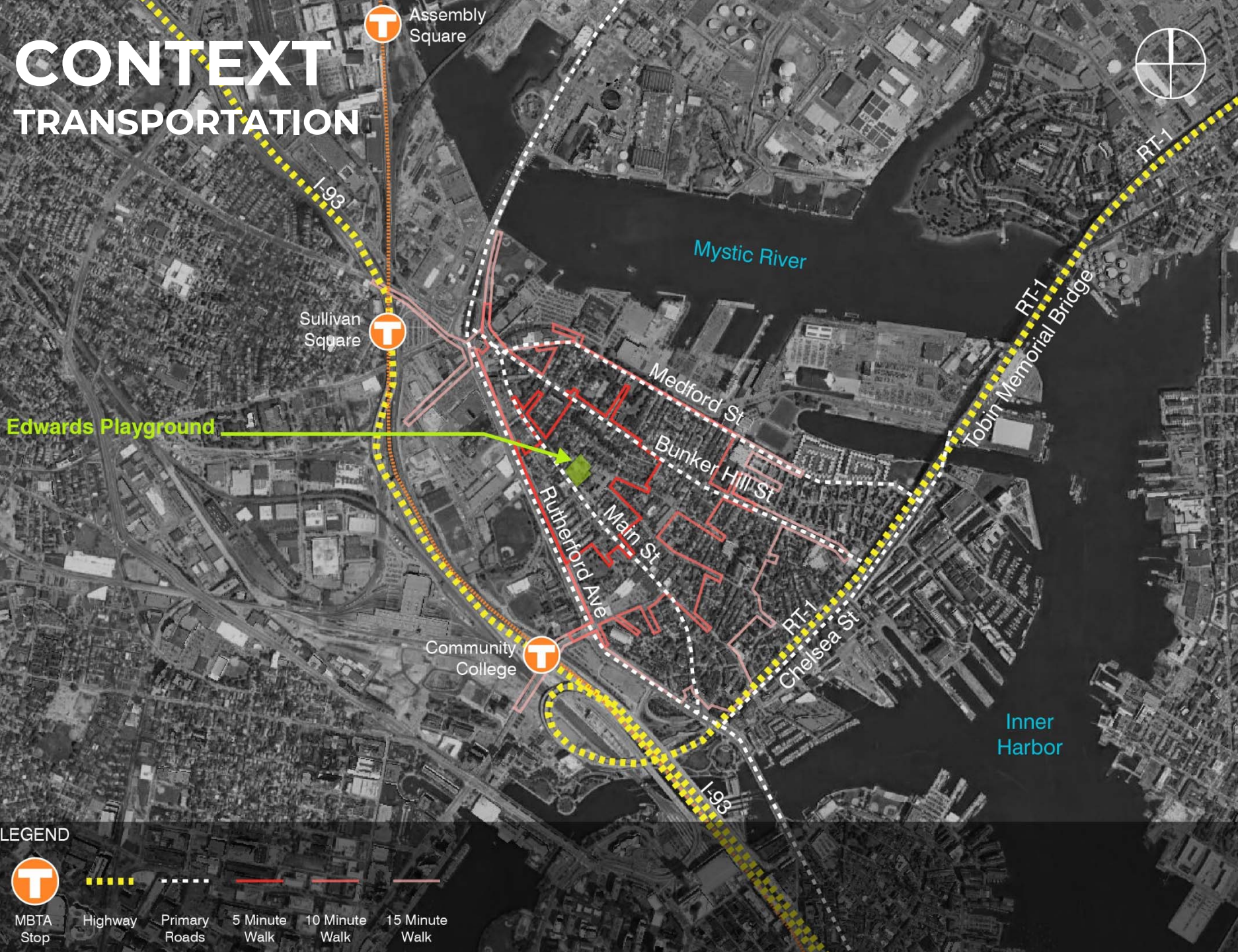
Edwards Playground



Inner Harbor



CONTEXT TRANSPORTATION



Edwards Playground

Assembly Square

Sullivan Square

Community College

Mystic River

Inner Harbor

LEGEND



MBTA Stop



Highway



Primary Roads



5 Minute Walk



10 Minute Walk



15 Minute Walk

CONTEXT

PARKS & OPEN SPACE



Ryan Playground



Caldwell St Playground



Doherty Playground



Edwards Playground



Phipps St Burying Ground



Bunker Hill Burying Ground



Peter Looney Park



Galvin Memorial Park



Mystic River

Cook St Play Area



Bunker Hill Monument



Historic Training Field



John Harvard Mall



City Square Park



Paul Revere Park



Inner Harbor

LEGEND



Passive Area



Multi-Use Fields



Basketball



Baseball



Tennis



Track + Field



Horse-shoe



Street Hockey



Playground



Tot Lot (2-5 Yrs)



Water Feature

CONTEXT SCHOOLS



Mystic River

Charlestown H.S. Athletic Fields



Edwards Playground

Warren-Prescott Elementary



Edwards Middle School

Harvard-Kent Elementary



Inner Harbor

LEGEND



Passive Area



Multi-Use Fields



Basketball



Baseball



Tennis



Track + Field



Horseshoe



Street Hockey



Playground



Tot Lot (2-5 Yrs)



Water Feature

CONTEXT

DOG WALKING



Schrafft Center



Edwards Playground



Mishawm Park Apartments



Dog Run Under Construction

Galvin Memorial Park



LEGEND



Public



Private

Mystic River

Bunker Hill Monument

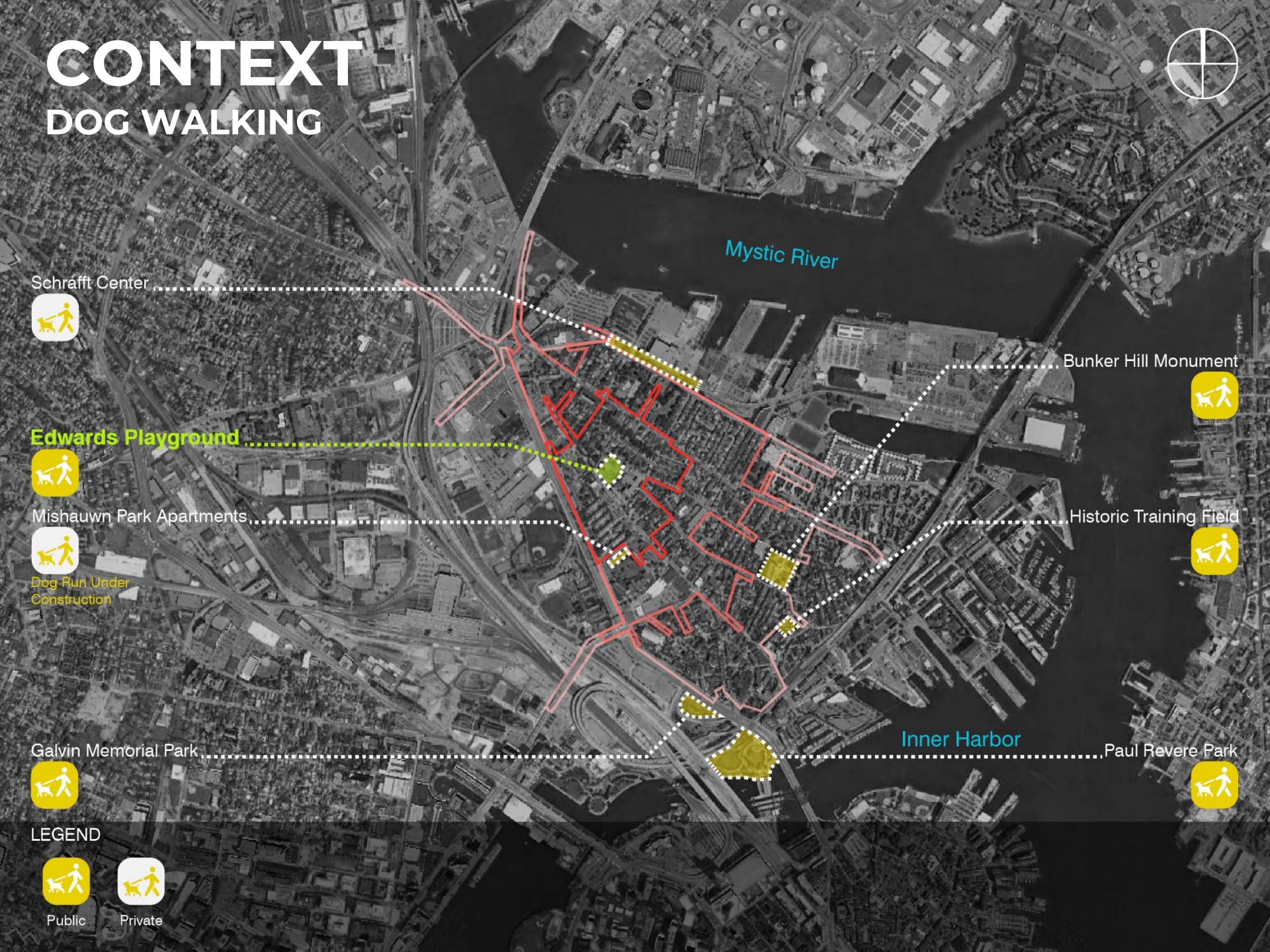


Historic Training Field



Inner Harbor

Paul Revere Park



CONTEXT

EVENTS



Edwards Playground

- Peter Looney Concert Venue
- Steven Jones Memorial Balloon Release
- Edna Kelly's Doll Carriage Parade
- Kitchen Kup Tournament
- Cookie Jar Roller Hockey Tournament

Mystic River

Bunker Hill St

Main St

Inner Harbor

LEGEND



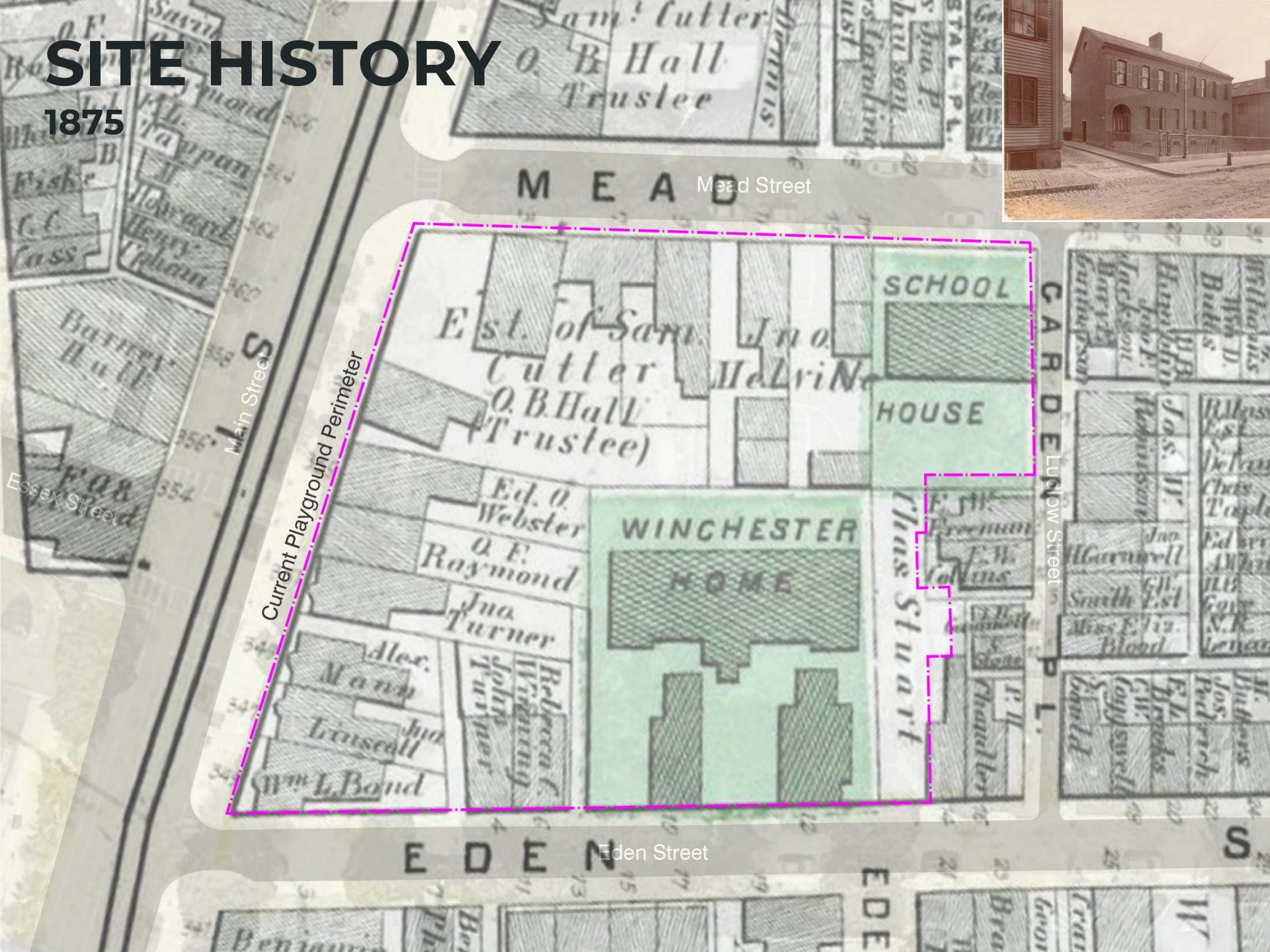
Bunker Hill Pride
Parade Route

SITE



SITE HISTORY

1875



M E A D Mead Street

Main Street

Current Playground Perimeter

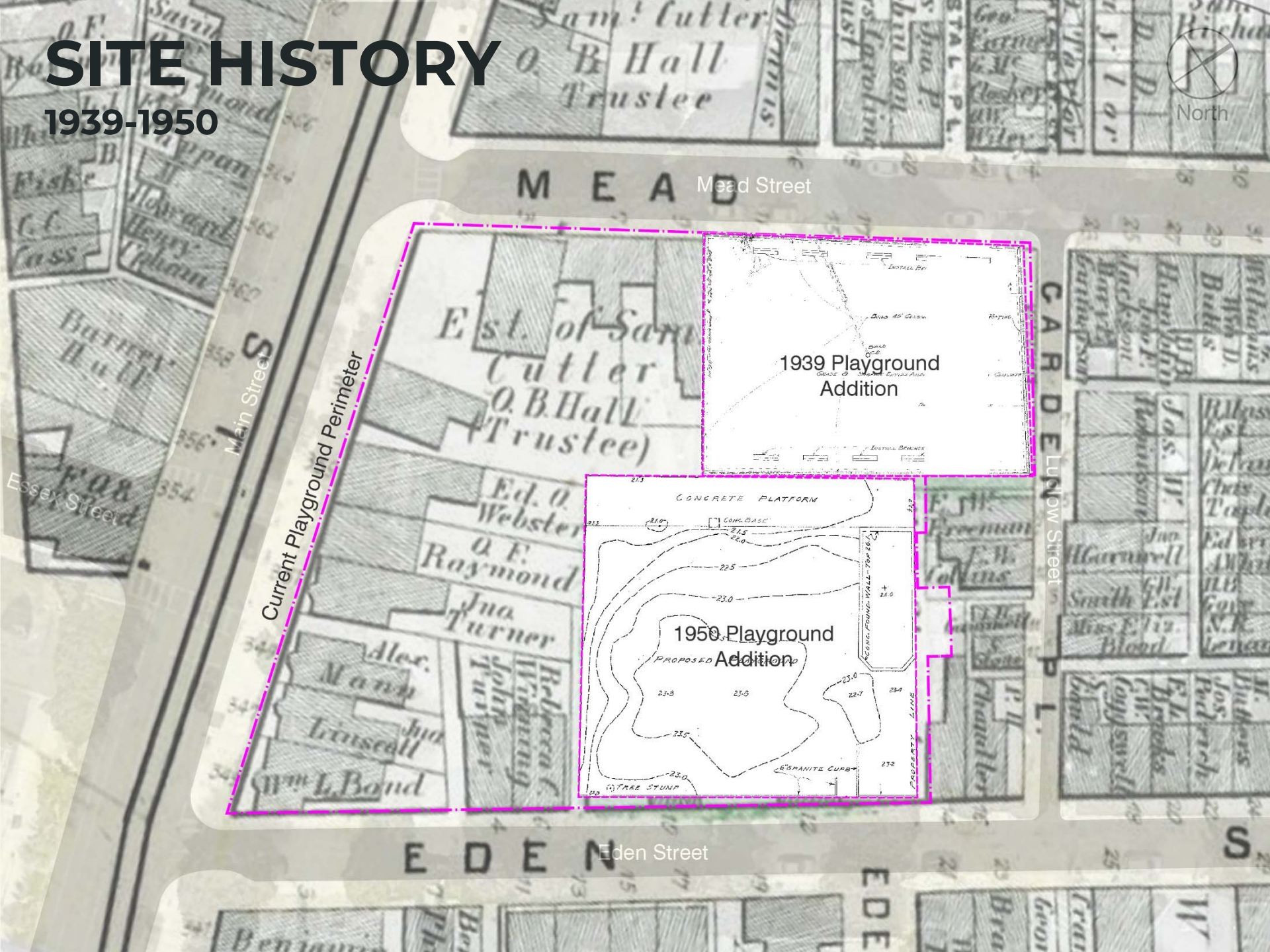
E D E N Eden Street

C A R D E N Carden Street



SITE HISTORY

1939-1950



M E A D Mead Street

Main Street

Current Playground Perimeter

Essex Street

C A R D E N Carden Street

E D E N Eden Street

Est. of Sarah
Cutler
O. B. Hall
(Trustee)

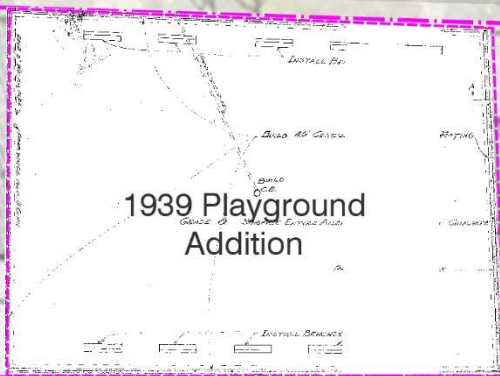
Ed. O.
Webster
O. F.
Raymond

John
Turner

Alec.
Mann

John
Linseall

Wm L. Bond



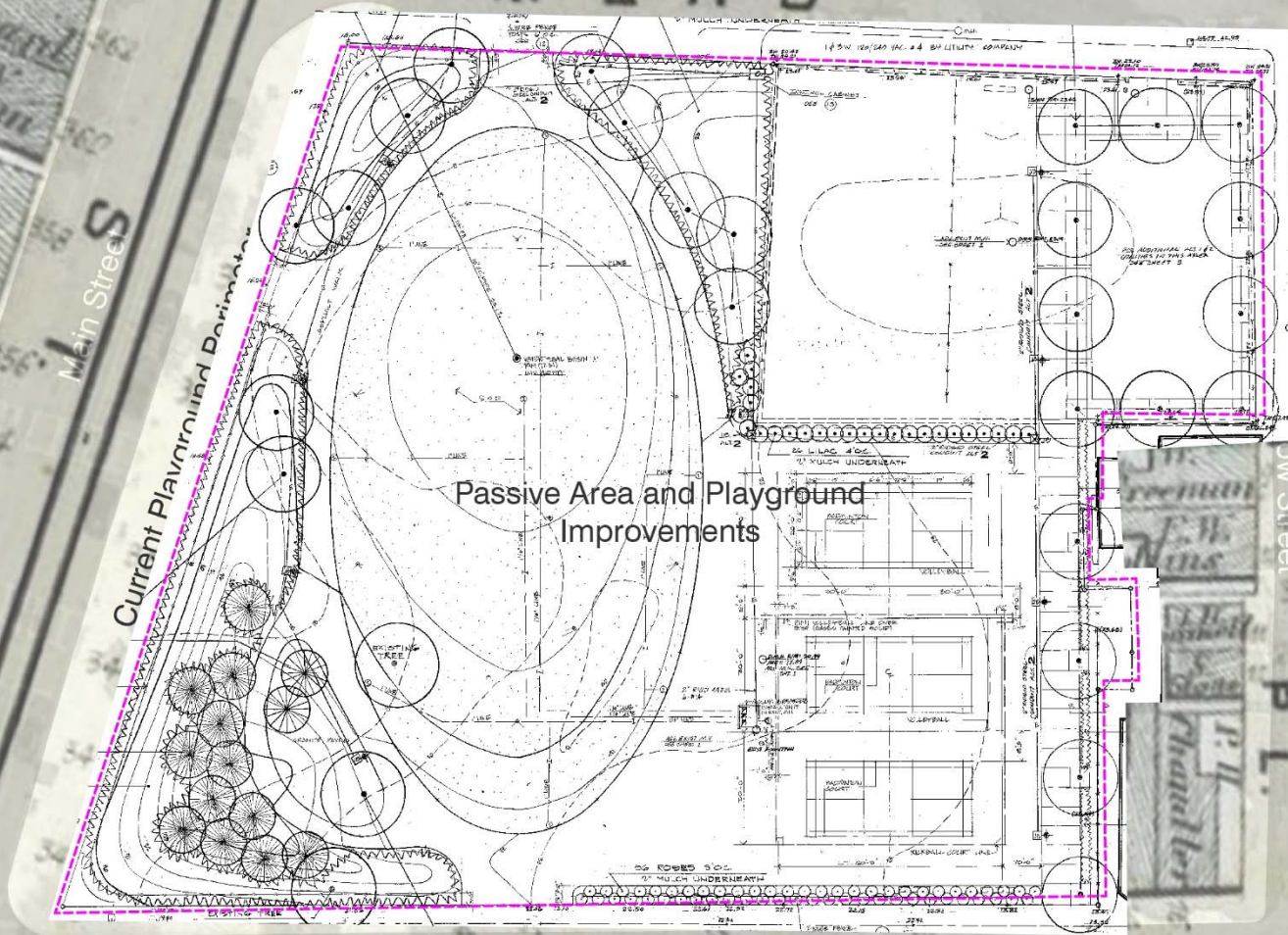
1939 Playground
Addition



1950 Playground
Addition

SITE HISTORY

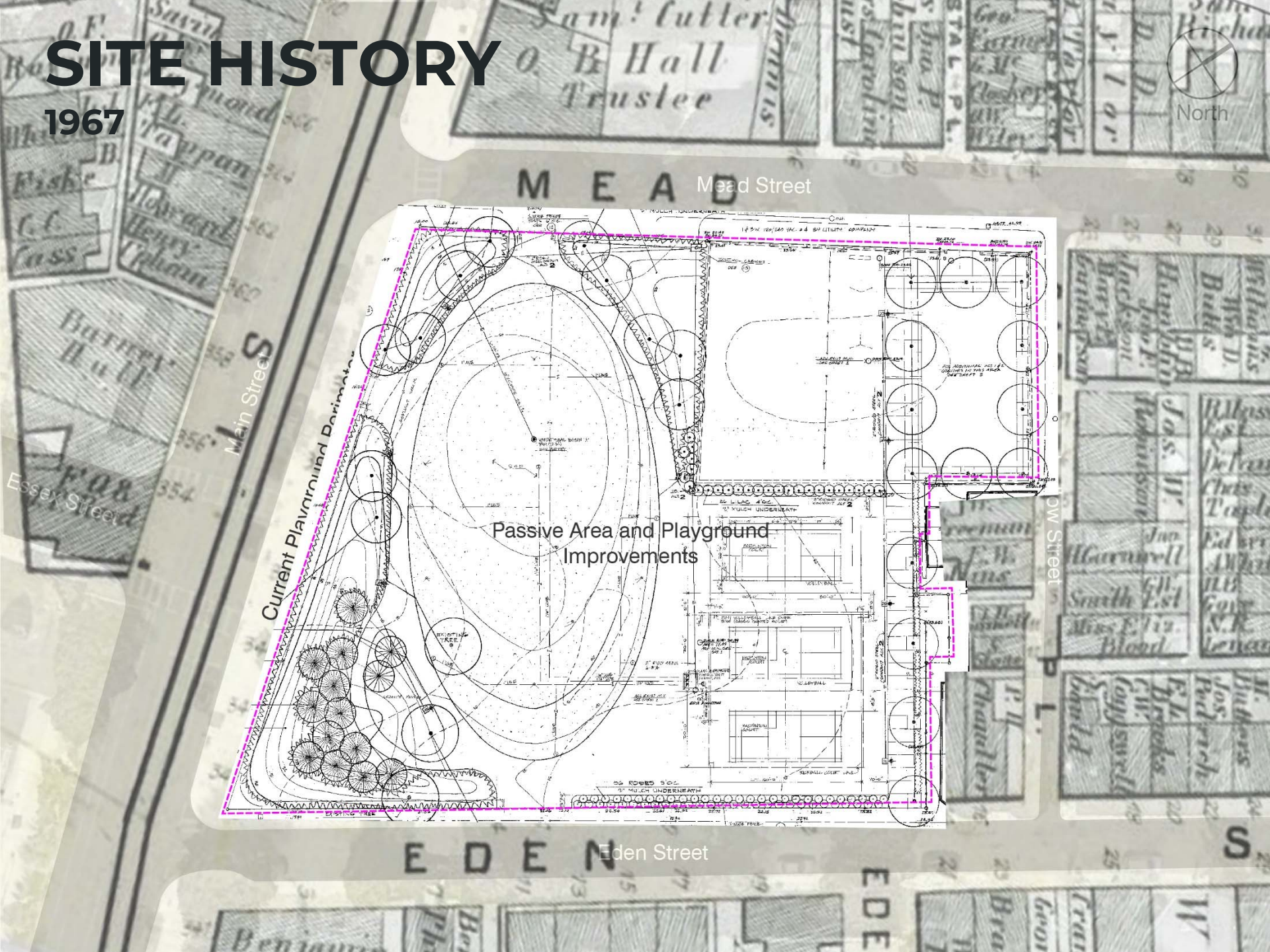
1967



MEAD Mead Street

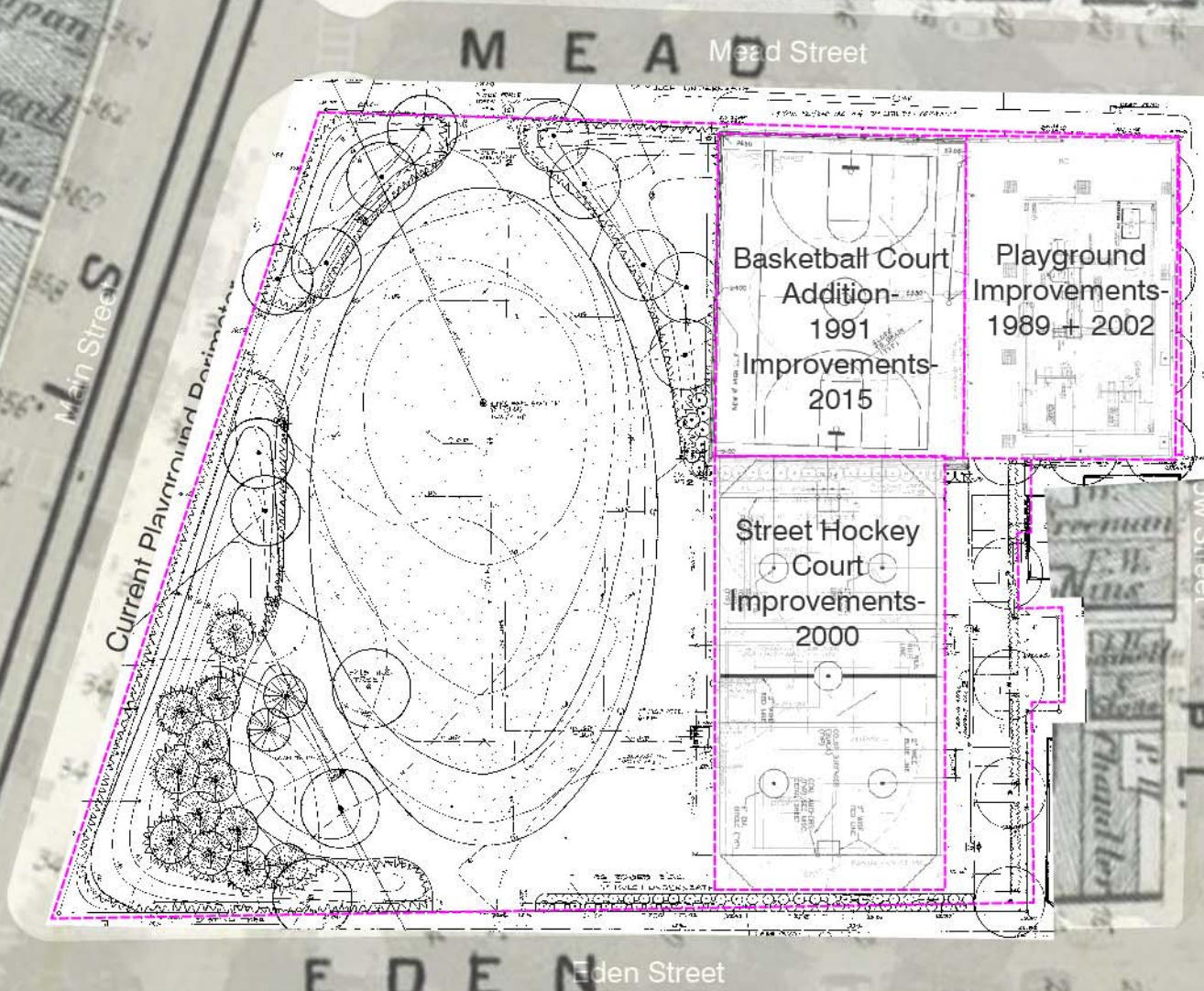
Main Street

EDEN Eden Street



SITE HISTORY

1989-2015



Basketball Court
Addition-
1991
Improvements-
2015

Playground
Improvements-
1989 + 2002

Street Hockey
Court
Improvements-
2000

Current Playground Driveway

M E A D Mead Street

E D E N Eden Street

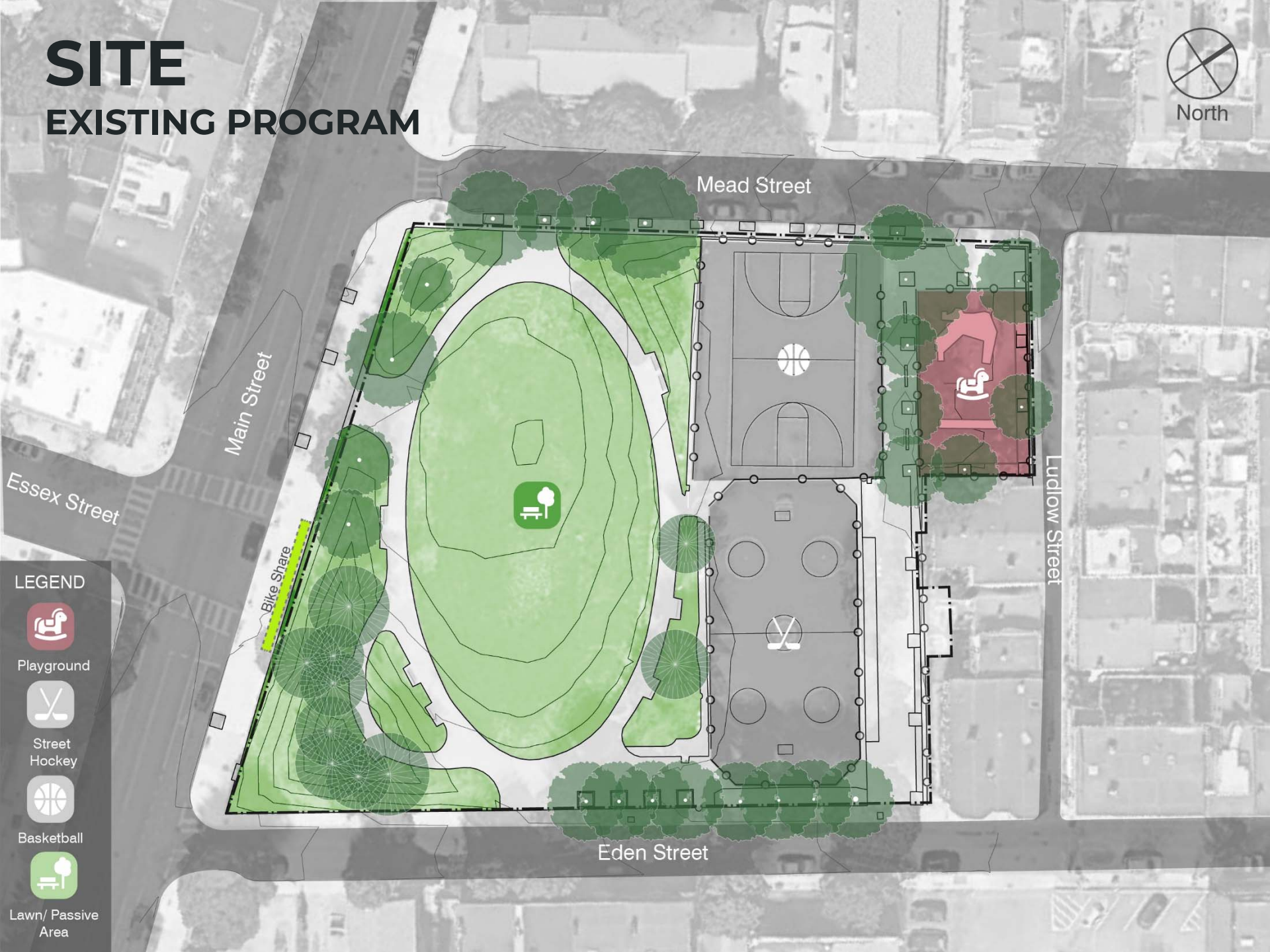
M A I N Main Street

E S S E X Essex Street

**SITE
EXISTING**



SITE EXISTING PROGRAM



LEGEND



Playground



Street Hockey



Basketball



Lawn / Passive Area

SITE EXISTING PLAY



SITE EXISTING COURTS



SITE

EXISTING LAWN



SITE TOPOGRAPHY



LEGEND

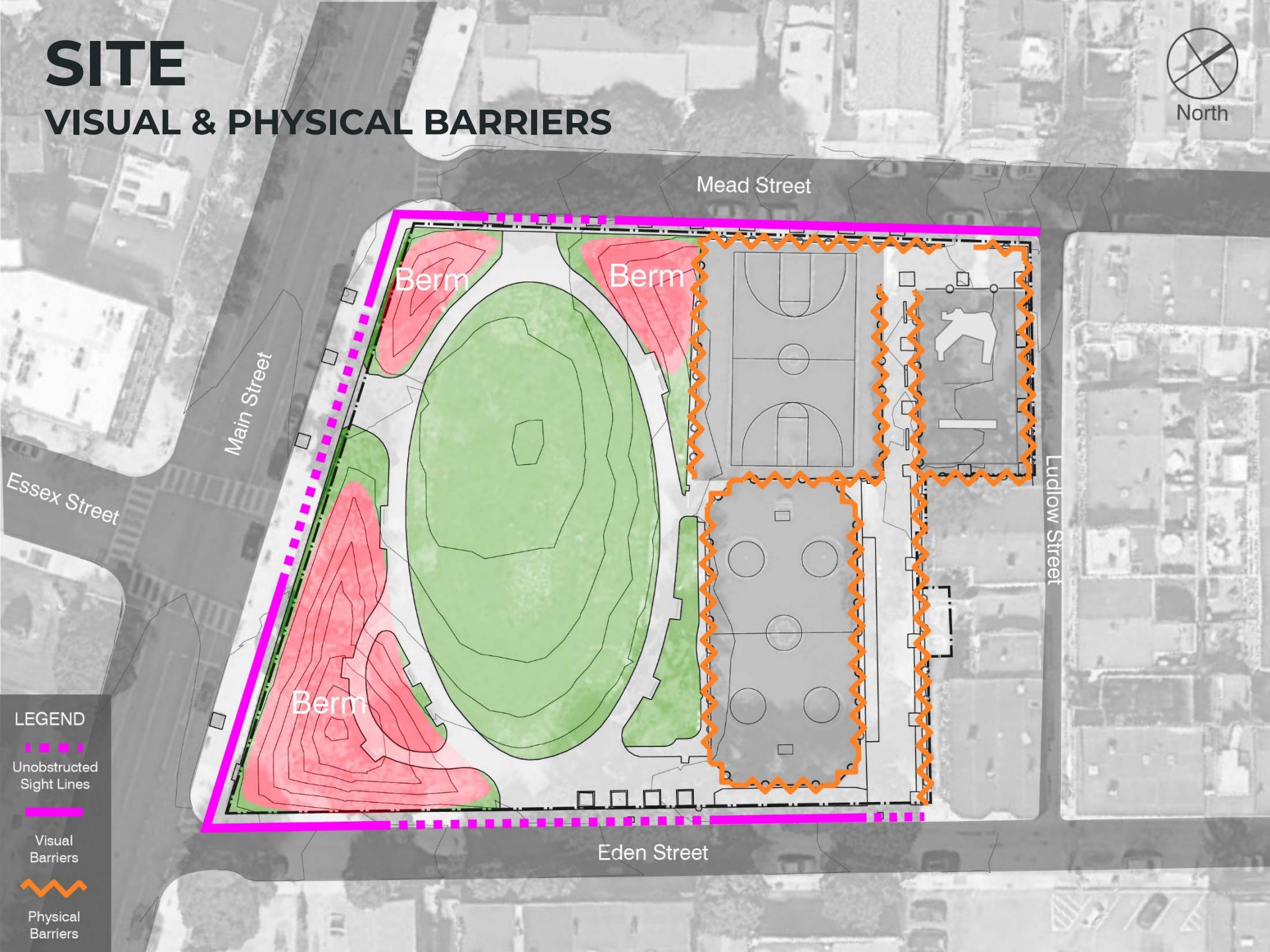
- Low Point/
Catch Basin
- Surface
Drainage
- Elevated
Landform
- Flat Area
- Low/ Depressed
Landform

SITE

VISUAL & PHYSICAL BARRIERS



North



Main Street

Mead Street

Ludlow Street

Eden Street

Essex Street

Berm

Berm

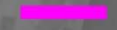
Berm

LEGEND

Unobstructed Sight Lines

Visual Barriers

Physical Barriers



SITE FENCING/WALLS





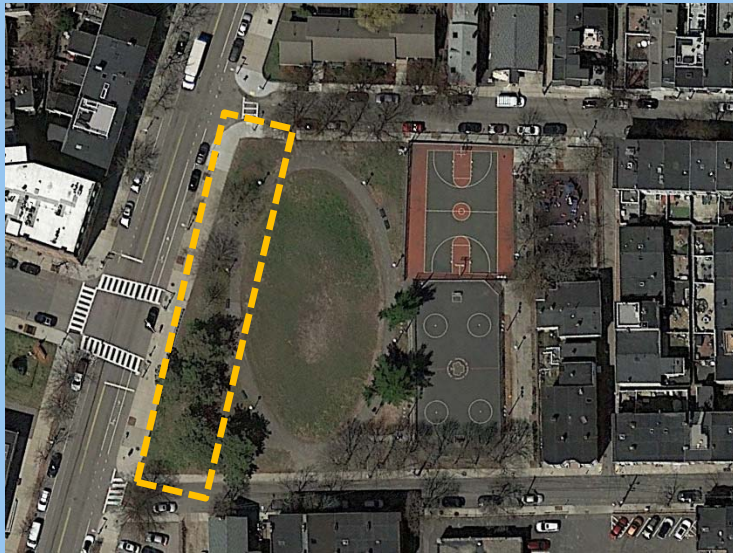
SITE CIRCULATION



- LEGEND**
- Passive Circulation + Park Access
 - Active Circulation
 - Sidewalk Circulation
 - Bike Lane
 - Vehicular Circulation

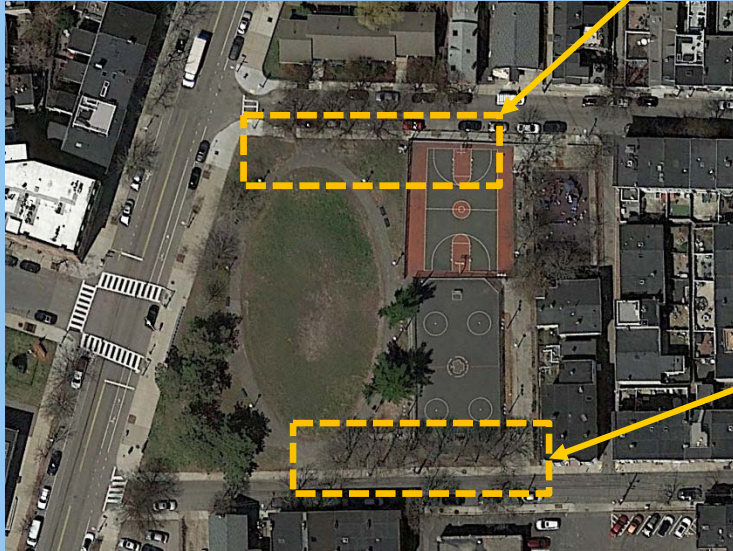
SITE

TREE CANOPY



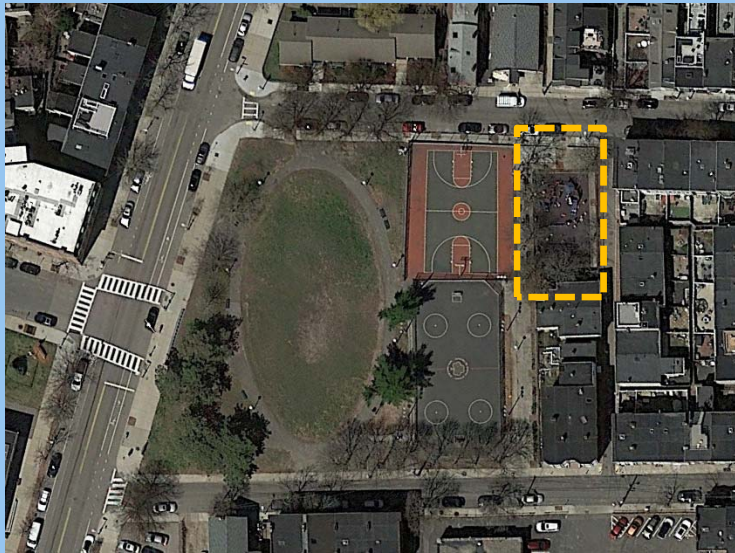
SITE

TREE CANOPY



SITE

TREE CANOPY





LISTENING & DISCUSSION

Help us build great parks.
Let us know what matters to you.



THANK YOU!

Next Meeting – TBD in Oct/Nov

For questions, maintenance requests or concerns regarding any of our parks contact 311



September 20, 2018
Boston Parks and Recreation



PLAY INSPIRATION



basket swing - Sweeney Playground, South Boston



swings



copter/bike/ring track - Hoyt Sullivan Playground, Somerville



topographic play with embankment aide & climbing routes



block, local wood playhouse - younger age group



block, local wood, ball, obstacle/circle, cobra, older age group



bamboo panel & metal structure - younger age group



play elements - spring rider



play elements - spinner



play elements - climbing, older age group



play elements - climbing, younger age group

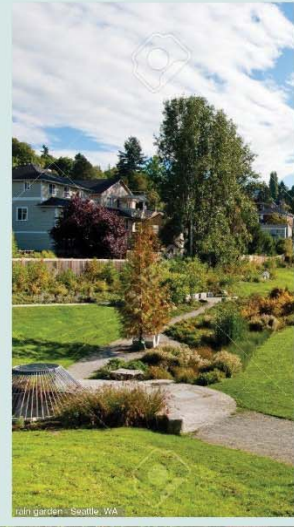
PARK INSPIRATION



new plantings, enhanced green space



seasonal plantings - Alnoki Arboretum, Jamaica Plain



rain garden - Seattle, WA



play integrated with path - Alta de Ullastret, Catalonia, Spain



interactive water feature - Forest Hill, Brookline



Water Lab - Brooklyn, NY



deck integrated with path - Schardeins, Plass, Oslo, Norway



lean with seating edges, deck - Puast Park, Northampton



seating steps - Queen Elizabeth Olympic Park, London, England



family seating - Crawshaw Harris Park, Somerville



family seating

