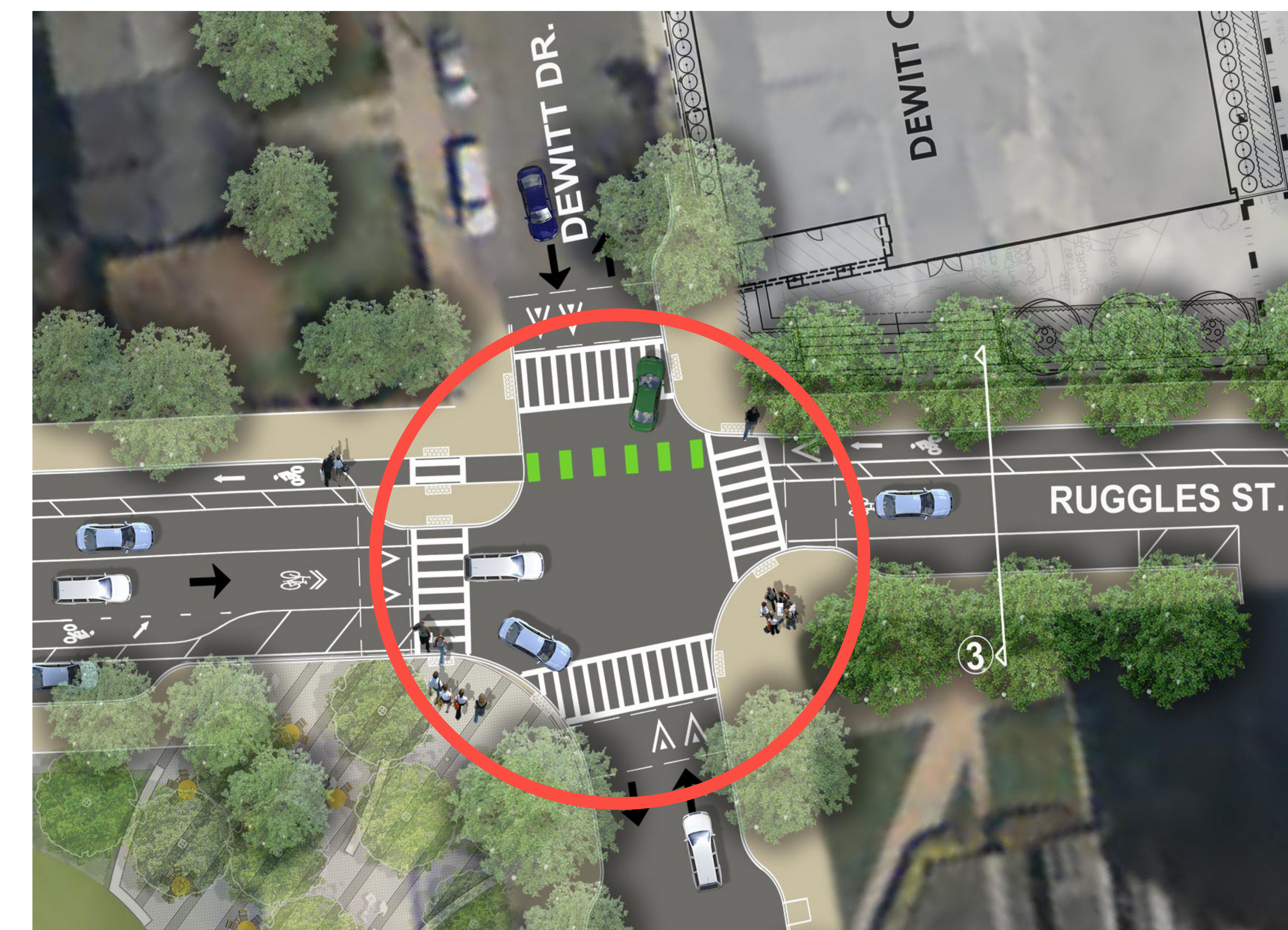


PEDESTRIAN SAFETY AND TRAFFIC CALMING



Proposed Improvements: Tighter curb radii, curb-extensions, raised crosswalks, lane delineation, ADA compliant sidewalks.

Raised intersection at Ruggles and Dewitt.



Ruggles Street at Raynor Circle with proposed street improvements (curb extensions, crosswalks, bike lanes, lighting, street trees, raised crossing (Raynor Circle)).

Raised Intersection (Cambridge, MA)

Tighter Curb Radii - Slower turns for vehicles around corner and better sight distance.

Curb Extensions - Shorter pedestrian crossing and increased pedestrian visibility.

Raised Crosswalks - Visually emphasizes crosswalks, slows vehicles.

Lane Delineation - Narrowed travel lanes to encourage slower speeds, clear space allocation for bikes and vehicles.

Raised Intersections - Emphasize/highlight busier pedestrian crossing at park and community center, slow vehicles, make pedestrians more visible.

Accessibility - ADA compliance, wider sidewalks, safe sidewalk cross-slopes, smooth surface, wheelchair accessible curb ramps.

Signage - Alerts drivers to expect pedestrians, bicyclists, school children. Radar feedback sign alerts drivers regarding speed.



Radar Feedback Sign



Curb Extension and Bike Lane (Massachusetts Ave.)



Curb Ramp (Boston)



Lighting and Landscaping (Seaver Street)



Boston Arts and Culture Department



Boston Disabilities Commission



Boston Housing Authority



Boston Department of Neighborhood Development



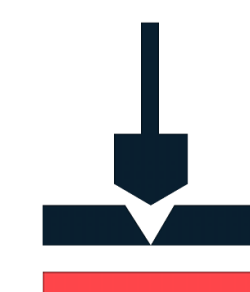
Boston Planning and Development Agency



Boston Parks and Recreation Department



Boston Transportation Department



Boston Public Works Department

RUGGLES STREET RECONSTRUCTION

Neighborhood Meeting #2

August 23, 2018



City Of Boston
Martin J. Walsh, Mayor



BICYCLE ACCOMMODATIONS



Proposed Improvements: Protected contra flow bike lane, raised and marked crossings, protected buffered bike lanes, two-stage queue box.



Ruggles Street at Raynor Circle with proposed street improvements (protected contra-flow bike lane, protected bike lane, raised and marked bike crossing (Raynor Circle).



Parking protected bike lane (Beacon Street).

Protected Contra Flow Bike Lane - The bike lane in the contra flow direction is protected by a buffer area along the full length of the street.

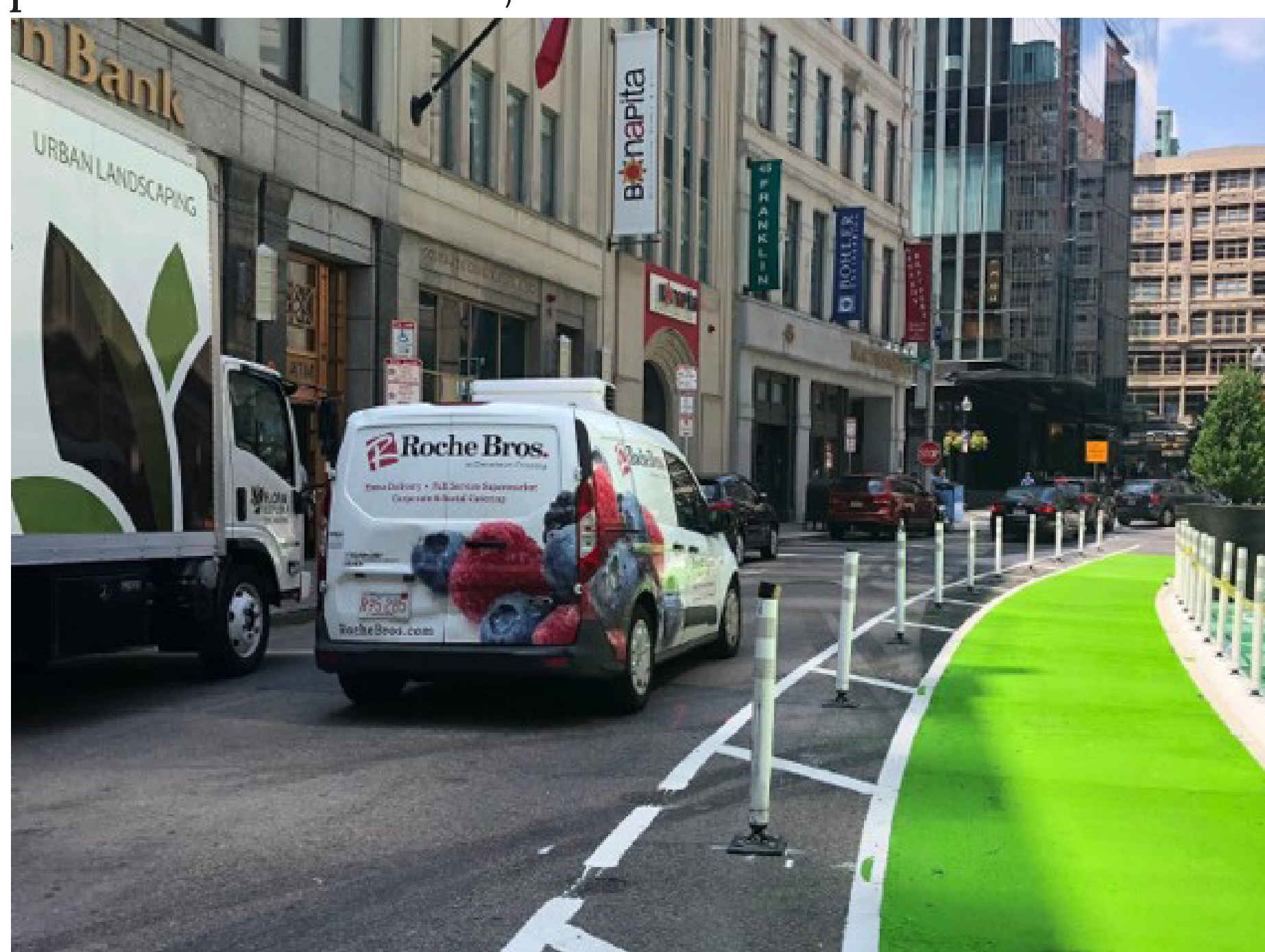
Raised Bike Crossings - On minor intersections, raised bike crossings calm traffic and alert drivers to crossing bikes and pedestrians.

Marked Bike Crossings (Green) - Raises awareness of bicyclists in conflict areas, guides bicyclists through intersections, makes bicycle movements more predictable.

Protected / Buffered Bike Lanes - Provides separation between bicyclists and vehicle traffic. Separation may be parked cars or a striped buffer. Buffer may be enhanced with flex posts at some locations.

Sharrows - In mixed flow lanes, sharrows visually alert drivers that bicycles will ride in traffic.

Two-Stage Turn Queue Box. Provides a location at appropriate intersections for bicyclist to comfortably wait to make a turn. Helps guide bicyclists to bike lanes



Protected bike lane (Boston)



Marked bike crossing (Massachusetts Ave.)



Sharrow (Museum Road) <http://calmstreetsboston.blogspot.com/>

BEAUTIFICATION

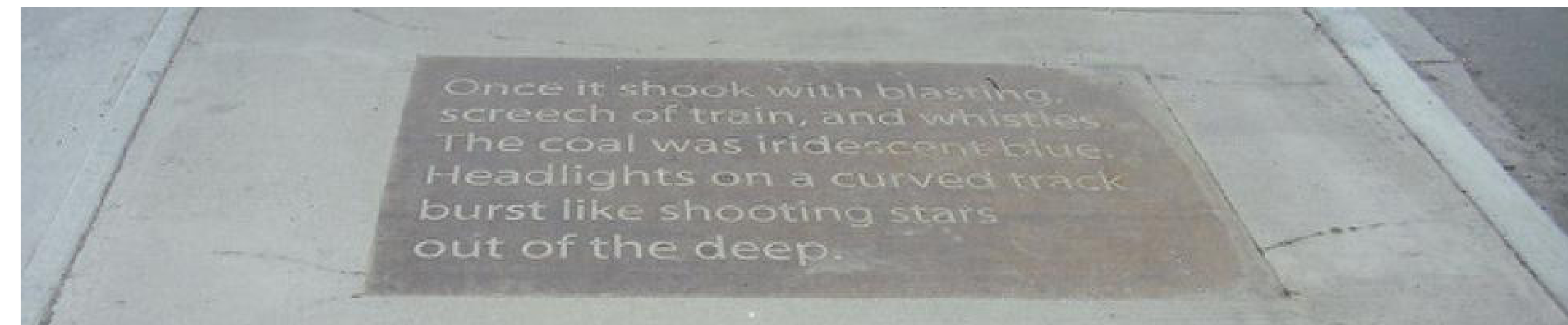


Ruggles Street at Dewitt Drive with proposed street improvements (lighting, street trees, redesigned park, seating areas).

Benches and seating area along a park (Boston Wharf Road).



Public art opportunities (Edward Everett Square).



Art integrated in sidewalks (Boston and London).

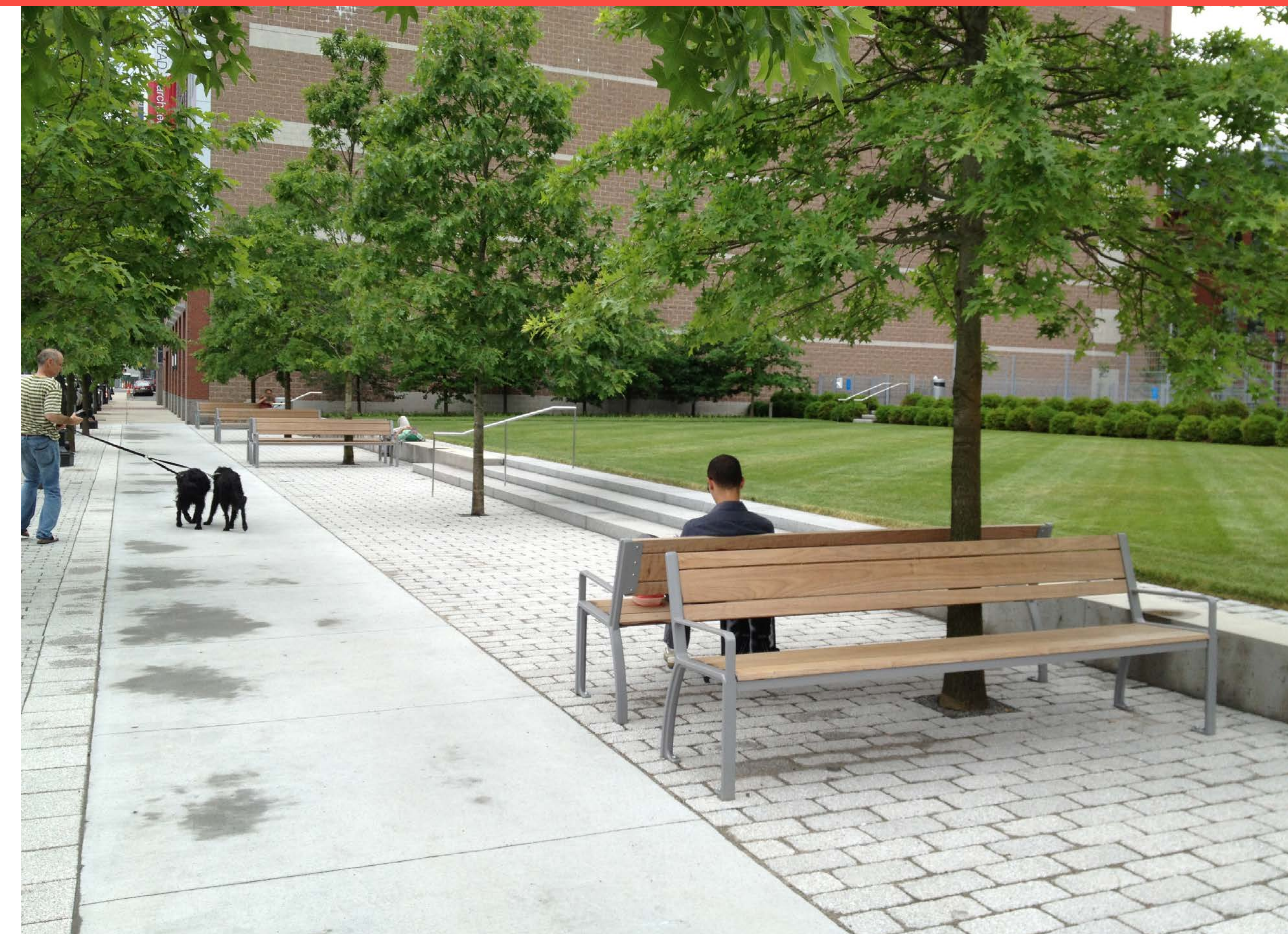
Street Trees - Mature trees preserved and new street tree planting opportunities along the street.

Decorative and Functional Lighting - New lighting that is attractive and functional.

Benches and Seating Areas - Opportunities for shaded/sunny sitting areas along the street.

Public Art Opportunities for public art installation such as a gateway sculpture, artistic treatment of the fence along the park, within the sidewalk, murals.

PUBLIC SAFETY



Ruggles Street at Dewitt Drive with proposed street improvements (traffic calming, improved lighting, pedestrian and bicycle activity).

Seating areas with public space activate the street (Boston Wharf Road)



Activating Street Life - More pedestrians, bicyclists, seating areas increases activity on the street and discourages anti-social behavior. Public art and beautification attracts people and makes the neighborhood appear 'cared for.'

Attractive and Functional Lighting - Improved street lighting improves nighttime safety.

Traffic Calming - Cuts down on speeding and creates a safer environment for pedestrians and bicyclists.

Ruggles Street at Raynor Circle with proposed street improvements (traffic calming, improved lighting, pedestrian and bicycle activity).

Interactive public art enlivens public space (Fort Point)
<http://www.nowandthere.org/>