

1

WELCOME!

TO THE MOAKLEY PARK VISION PLAN OPEN HOUSE



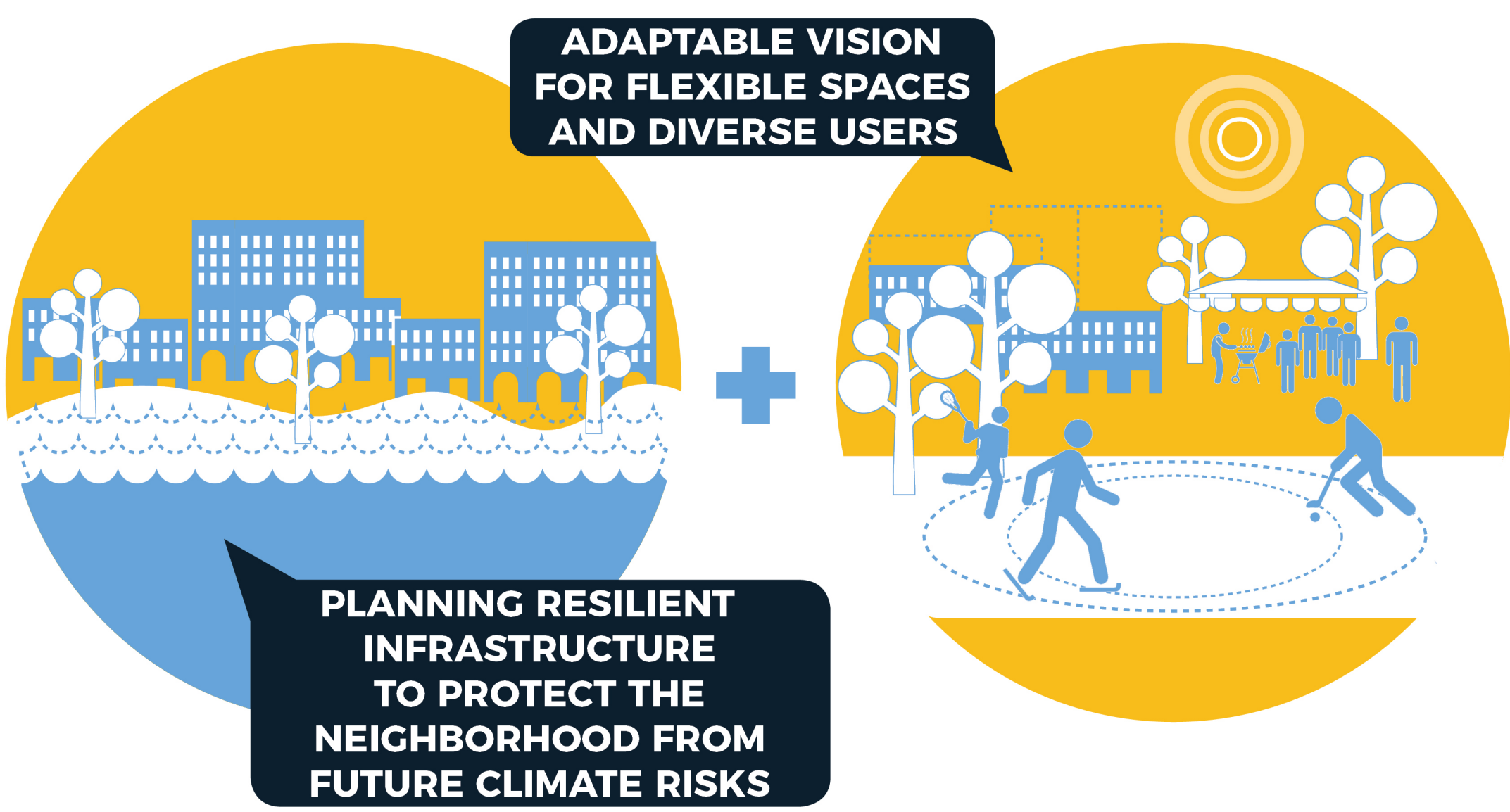
Boston Parks and Recreation is developing a comprehensive Vision Plan for the future of Moakley Park that is vibrant and resilient. The Moakley Park Vision Plan seeks to create a comprehensive long-term plan which balances outdoor recreational needs and community gathering spaces, with protection against climate-change impacts such as flooding from increased rainfall and sea level rise. The plan will provide a vision for programmatic development of the park that ensures a diverse and balanced mix of uses, increases active recreational opportunities, cultural amenities and safety. At the same time, it will consider how the design of the park can help increase the neighborhood's resilience against coastal flooding and reduce the impact of rainfall on active recreational fields.

The planning process itself seeks to stimulate meaningful and inclusive community engagement and identify both a long-term design approach to the park that encourages a wide range of users as well as early 'catalyst' projects and partnerships to help promote and sustain future park renovation projects. The vision will seek to increase connectivity between Moakley Park and adjacent neighborhoods as well as Carson Beach and The Boston Harbor Islands, just steps away.

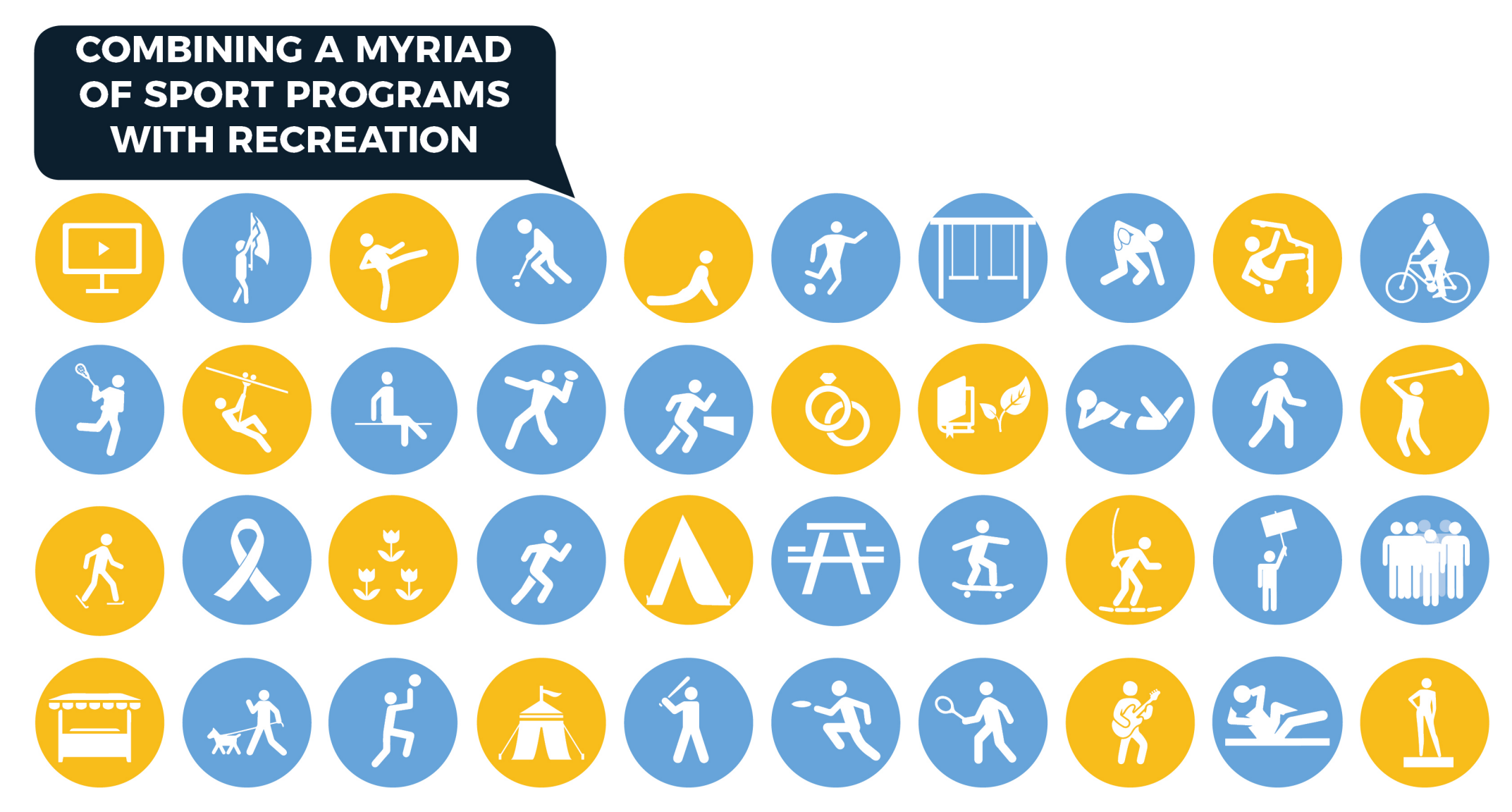
ACCESSIBLE FOR ALL LOCAL + LEGACY



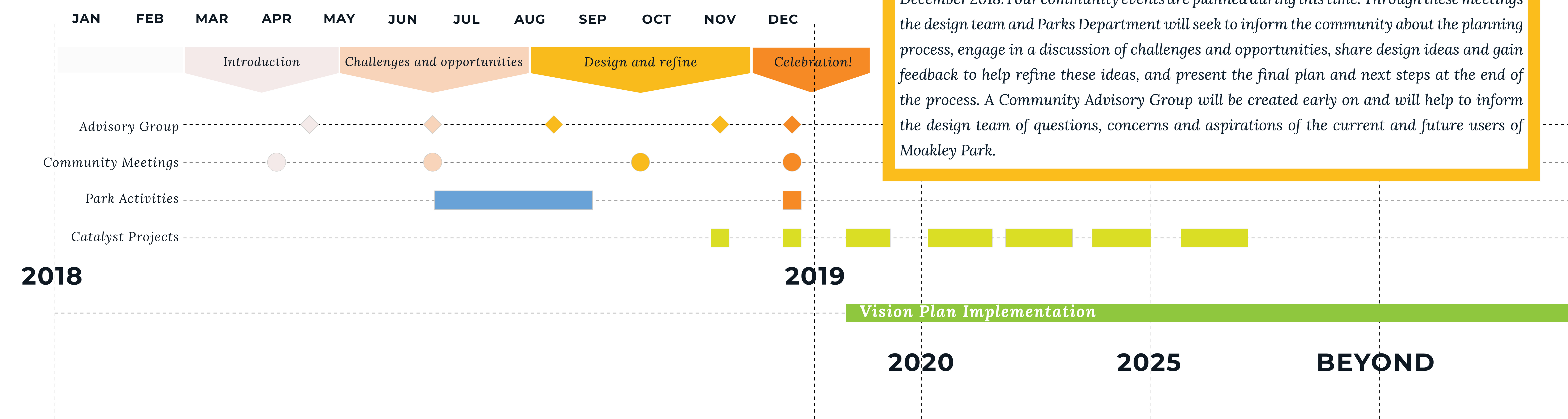
RESILIENT NEIGHBORHOOD ADAPTIVE + FLEXIBLE



DIVERSE PROGRAM BALANCE



FROM VISION TO REALITY

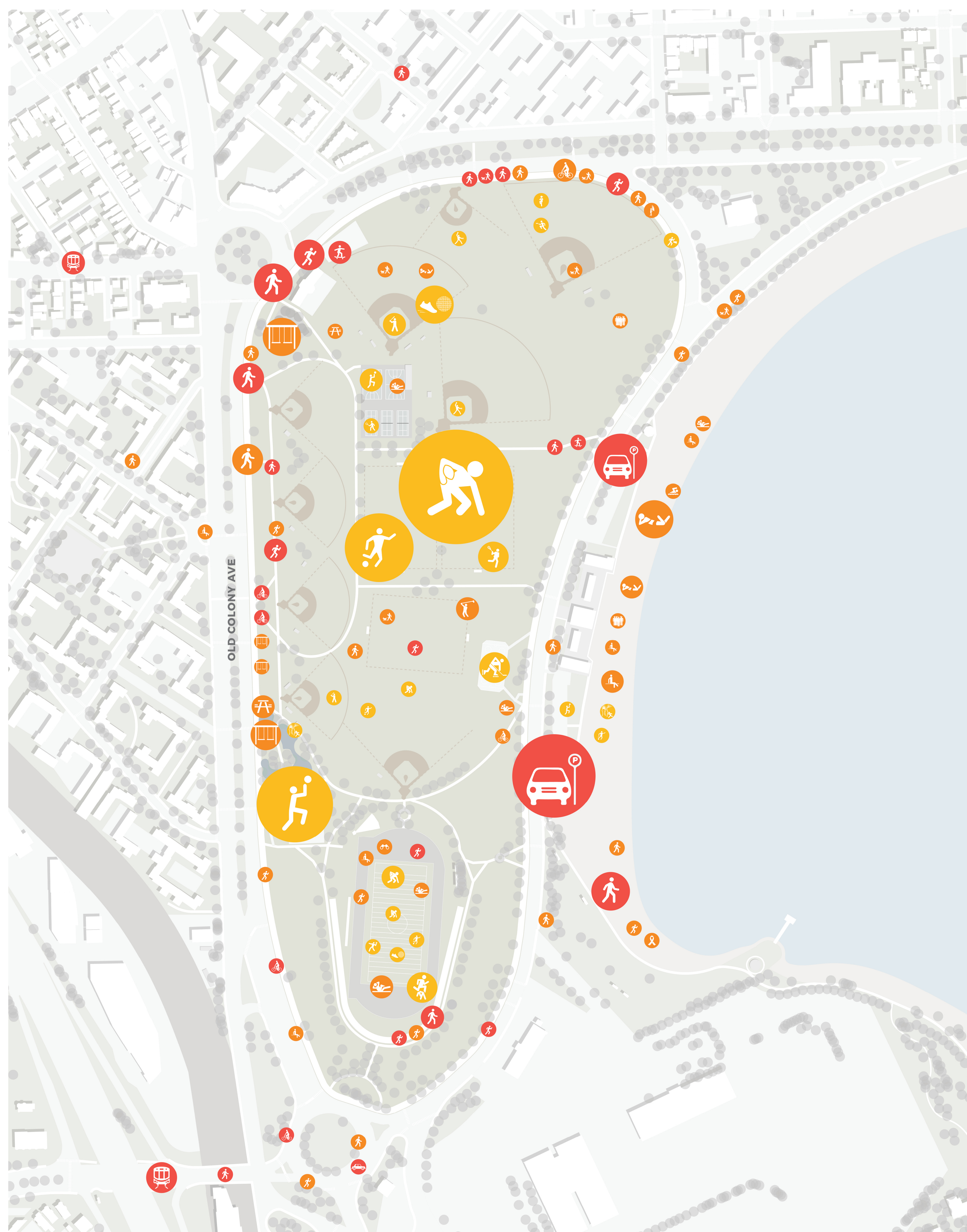


The Vision Plan process spans the course of the year, beginning in March and ending in December 2018. Four community events are planned during this time. Through these meetings the design team and Parks Department will seek to inform the community about the planning process, engage in a discussion of challenges and opportunities, share design ideas and gain feedback to help refine these ideas, and present the final plan and next steps at the end of the process. A Community Advisory Group will be created early on and will help to inform the design team of questions, concerns and aspirations of the current and future users of Moakley Park.

WHAT WE'VE HEARD!

FROM OUR FIRST OPEN HOUSE

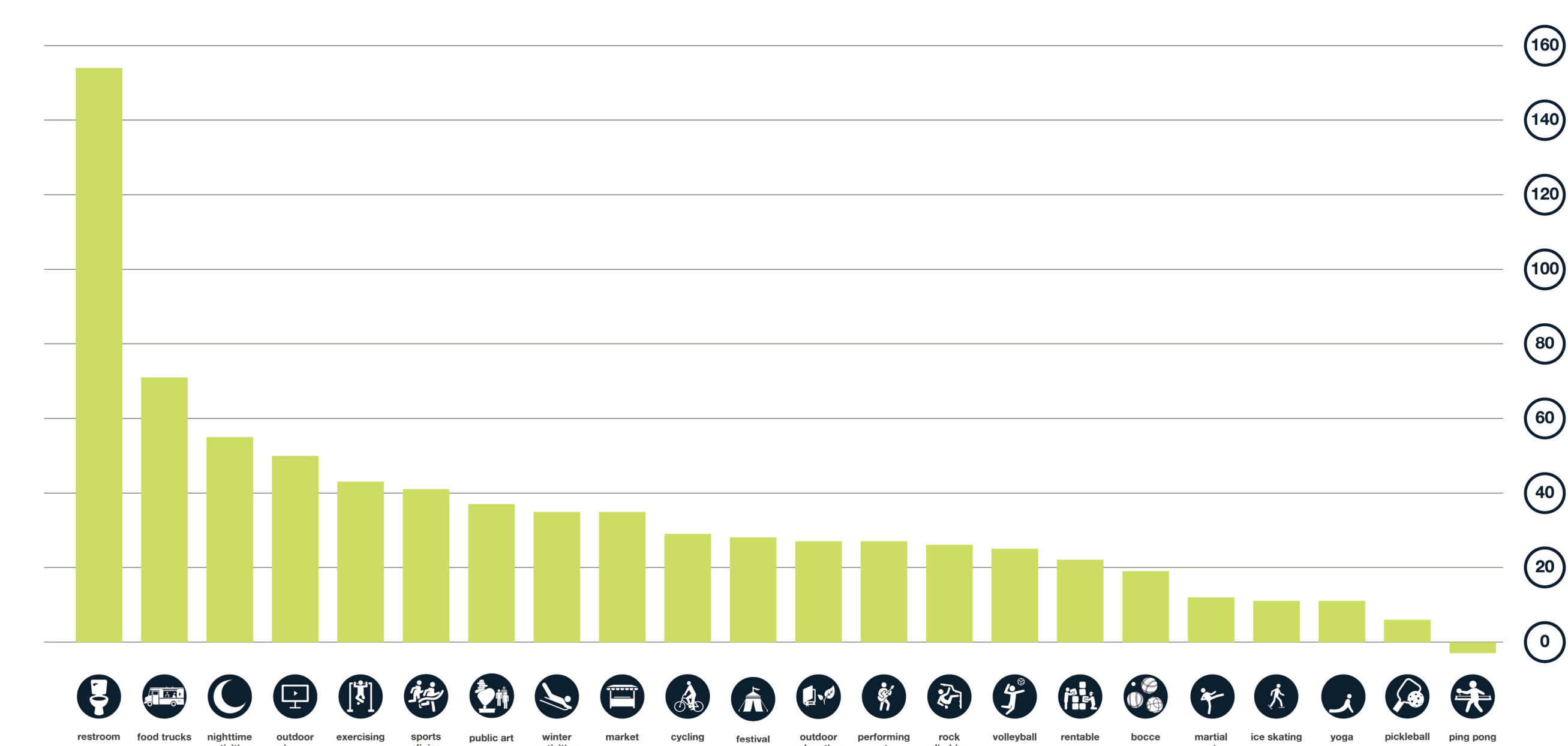
HERE'S HOW YOU MAPPED YOUR DAY AT MOAKLEY PARK!



THESE WERE SURVEY RESPONSE TRENDS!



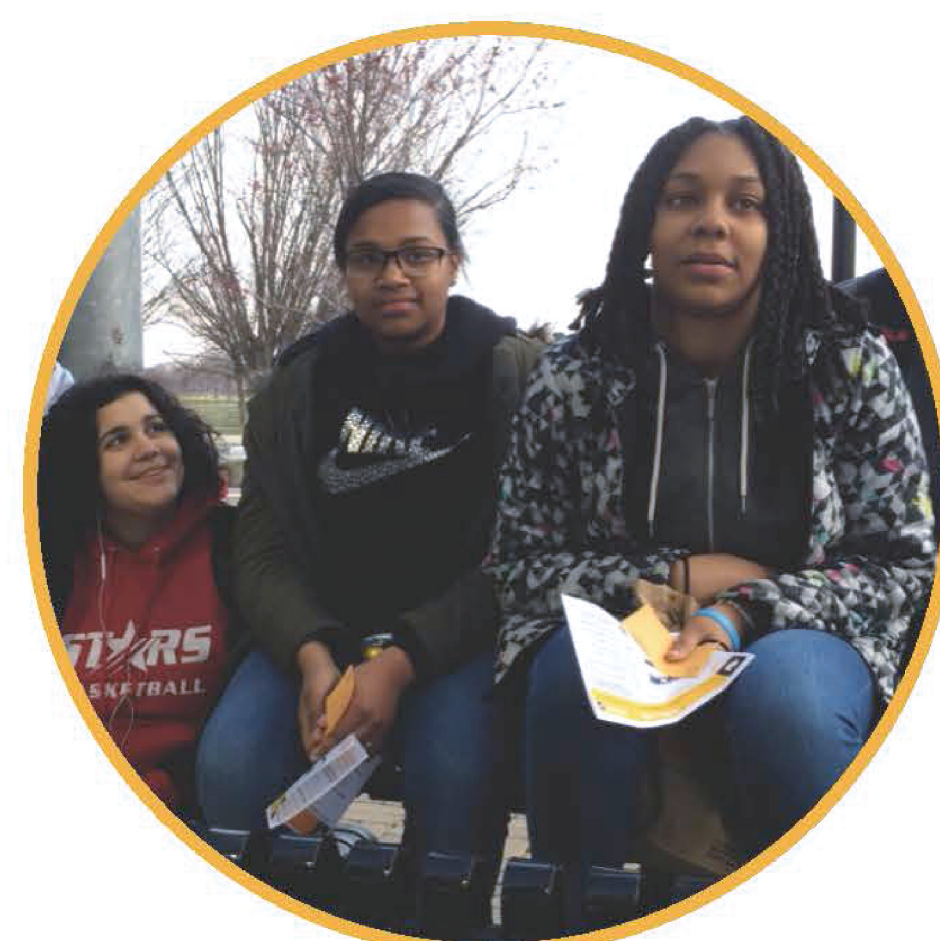
YOU WANTED TO SEE THESE SPACES AT MOAKLEY PARK!



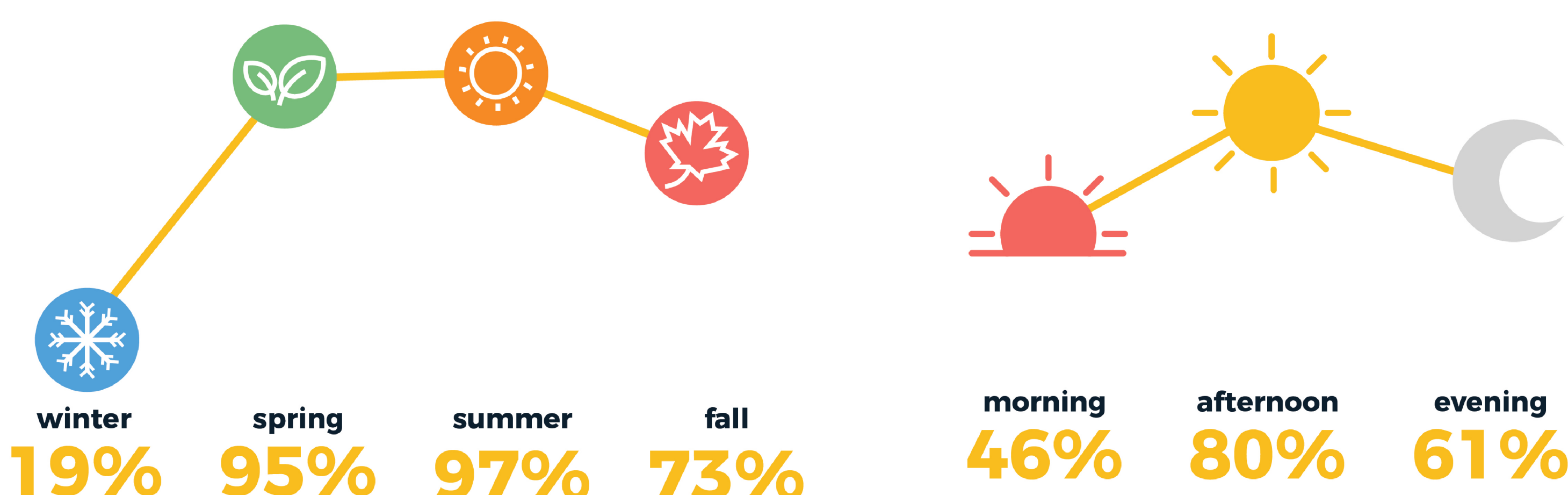
Our job as youth organizers is to give back to the South Boston community. The issue is that **people who can help us take us as a joke and push us aside.**

We envision **multi-sport facilities and community gardens, not dog parks or artificial turf.**

There should be **one big baseball field, and then open space for something else.**



THESE ARE THE PARKS YOU CHOSE TO INFORM THE VISION PLAN!



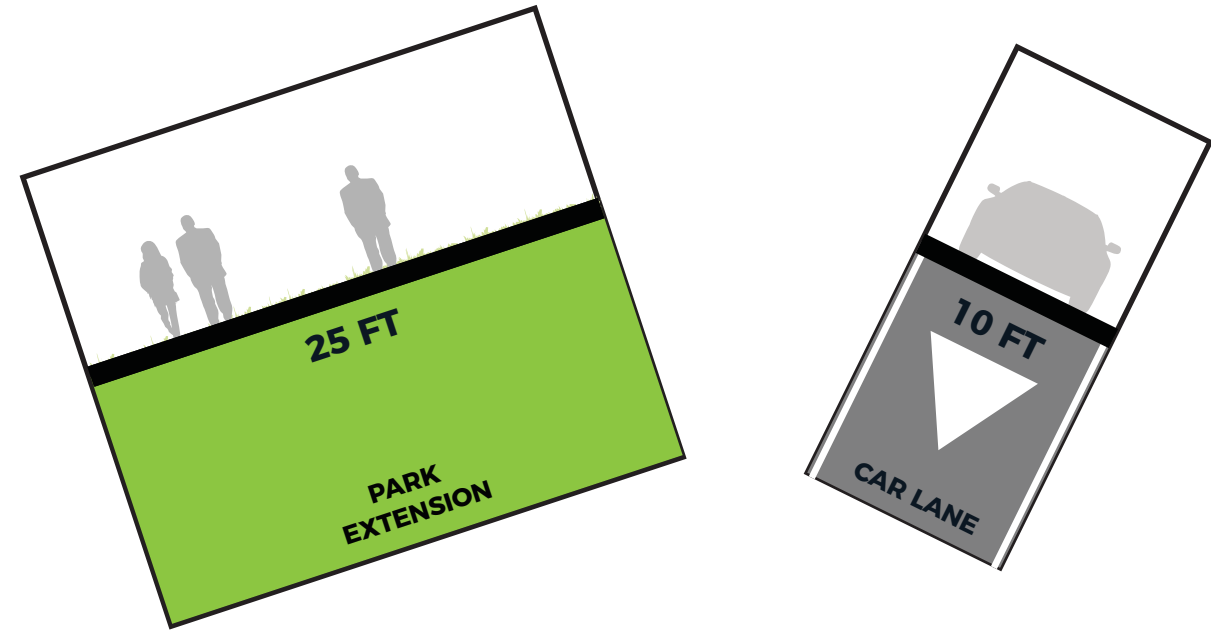
HERE'S WHEN YOU USE THE PARK MOST!

2 ARRANGE THE ROAD!

USE ROADS, BIKE LANES, PROMENADES AND PARK EXTENSIONS TO REDESIGN THE ROADS AROUND MOAKLEY PARK

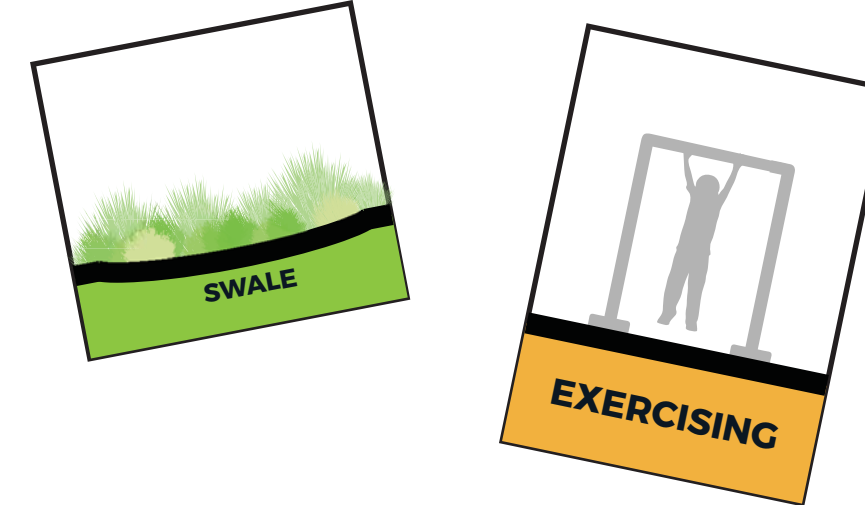
STEP 1

Use the road, park and promenade pieces to redesign Old Colony Ave.



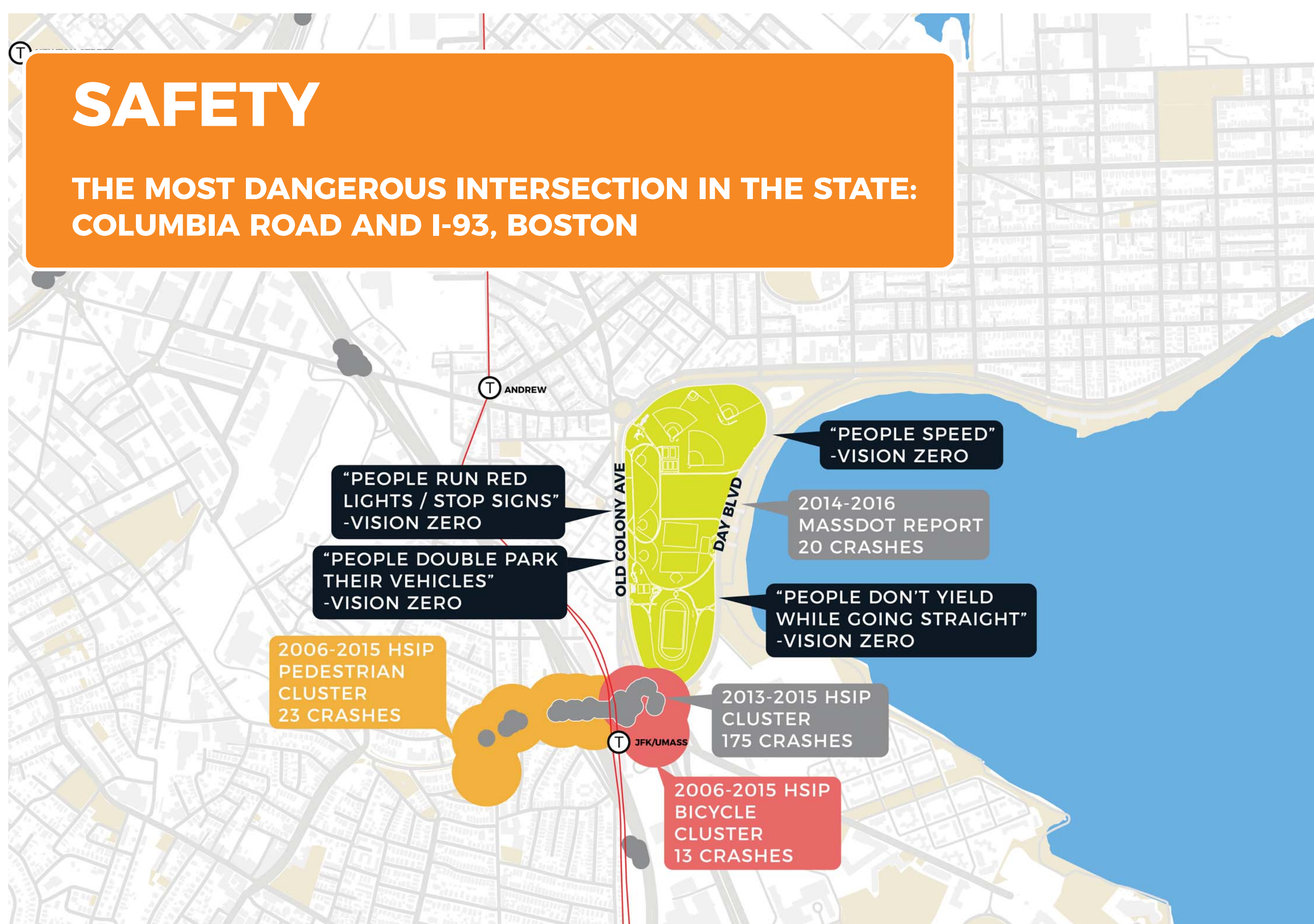
STEP 2

Add your favorite activities on top of your new road.



STEP 3

Repeat steps 1 + 2 for William Day Blvd.



2

ENVISION!

WHAT KINDS OF ROADS WOULD YOU LIKE TO SEE AT MOAKLEY PARK?

STEP 1

Take your thumbs up thumbs down stickers

STEP 2

Place your stickers on things you like or dislike



TRANSPORTATION



DRIVING LANE

3 rows of 10 empty circles for sticker placement.



BIKE LANE

3 rows of 10 empty circles for sticker placement.



PARKING

3 rows of 10 empty circles for sticker placement.

STORMWATER MANAGEMENT



BIOSWALE

3 rows of 10 empty circles for sticker placement.



PERMEABLE SIDEWALK SURFACES

3 rows of 10 empty circles for sticker placement.



STREET TREES

3 rows of 10 empty circles for sticker placement.

PEDESTRIAN CROSSINGS



GROUND CROSSING

3 rows of 10 empty circles for sticker placement.



ELEVATED CROSSING

3 rows of 10 empty circles for sticker placement.



GRASS BOULEVARD LANDING

3 rows of 10 empty circles for sticker placement.

CURBSIDES AMENITIES



DIGITAL COMMUNITY BULLETIN BOARD

3 rows of 10 empty circles for sticker placement.



BIKE SHARE

3 rows of 10 empty circles for sticker placement.



PROMENADE

3 rows of 10 empty circles for sticker placement.

ARE WE MISSING ANYTHING?

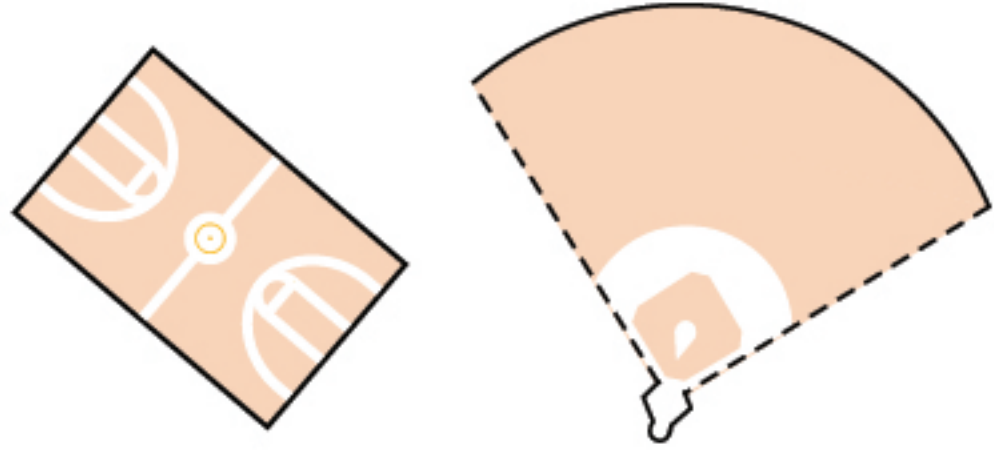
A large empty rectangular box for additional notes or ideas.

3 RETHINK PARK PROGRAM!

USE BOTH EXISTING AND NEW PROGRAM TO CREATE YOUR IDEAL MOAKLEY PARK

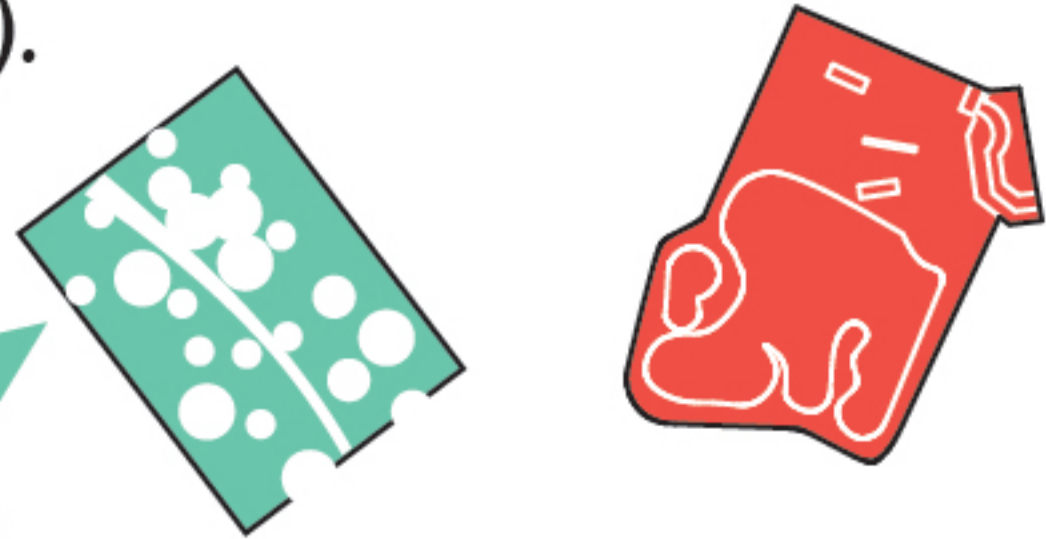
STEP 1

Choose the existing program you want to keep in the park.



STEP 2

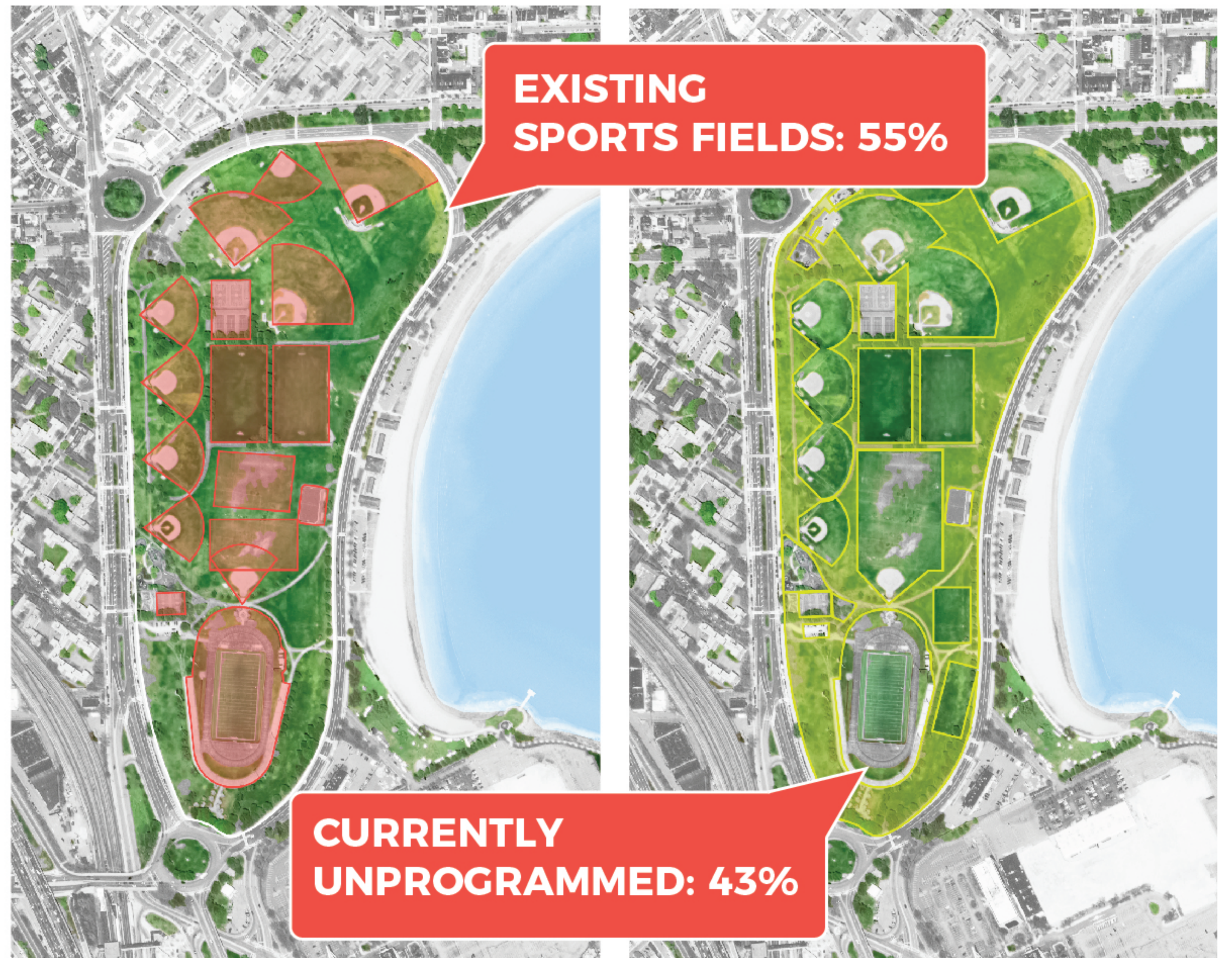
Pick what new programs you want to be added to Moakley Park. Approximately 1/4 of your pieces should be resilient (teal-colored).



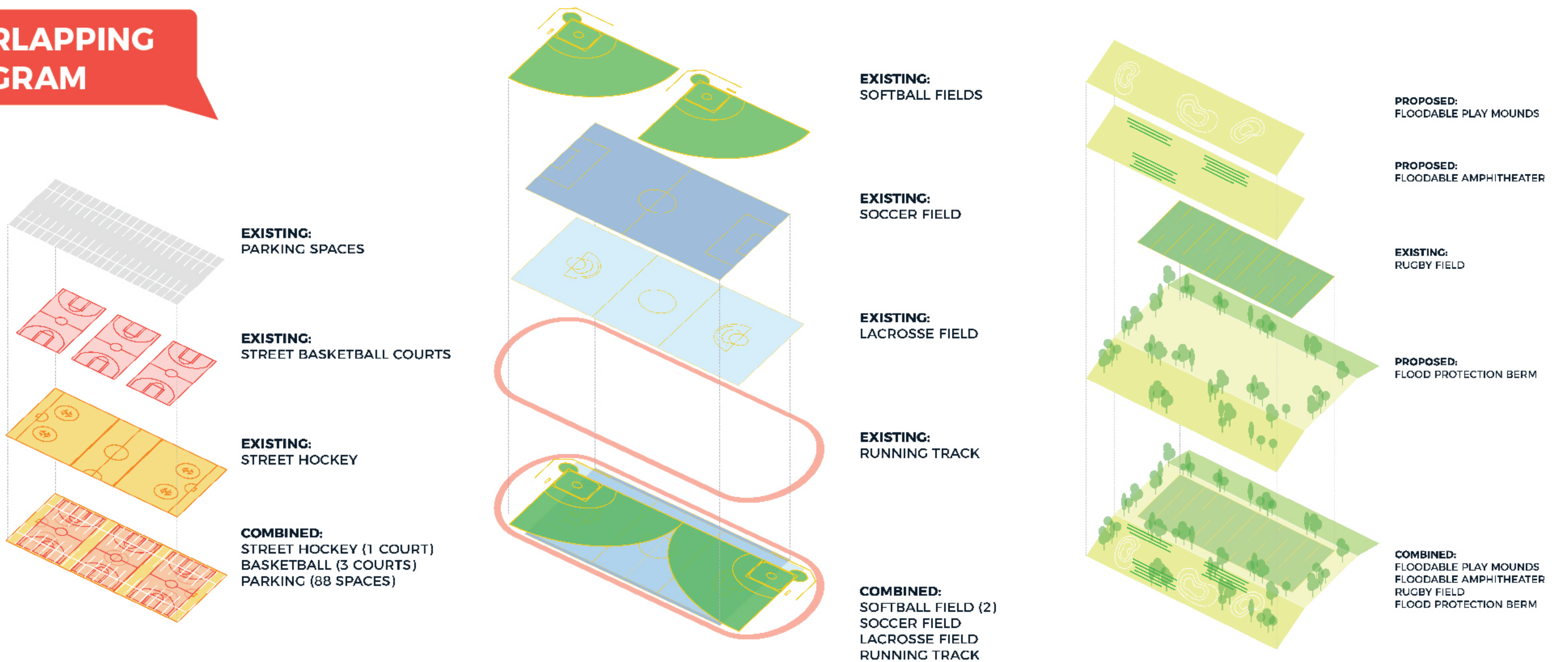
RESILIENT!

STEP 3

Arrange the pieces to create your ideal Moakley Park. Remember that you can overlap program in some cases!



OVERLAPPING PROGRAM




3 RETHINK PARK PROGRAM!

USE BOTH EXISTING AND NEW PROGRAM TO CREATE YOUR IDEAL MOAKLEY PARK

PROPOSED PROGRAM

 SKATE PARK	 MULTI-SPORT FACILITY	 BIKE AREA	 BOCCE	 PAVILION + RESTROOM
 CAFE	 ADVENTURE PLAY	 ROCK CLIMBING	 AMPHITHEATER	 ICE HOCKEY/SKATING
 BBQ/PICNIC AREA	 MARKET	 GAMES	 GAELIC FOOTBALL	 VOLLEYBALL
 PLAYGROUND	 COMMUNITY CENTER	 EXERCISE STATION	 FOOD TRUCK FAIR	 OUTDOOR EDUCATION
 LAWN	 YOGA/FITNESS CLASS	 COMMUNITY GARDEN	 DOG PARK	 SLEDDING MOUND
 GREENHOUSE	 WATER PLAZA	 POND	 SLOPED LAWN	 PLAY/SEATING MOUNDS
 WETLAND	 TREE GROVE	 FLOODABLE LAWN	 BIOSWALE	

WANT A PROGRAM THAT ISN'T LISTED? USE THE PAPER PROVIDED TO MAKE YOUR OWN!



4

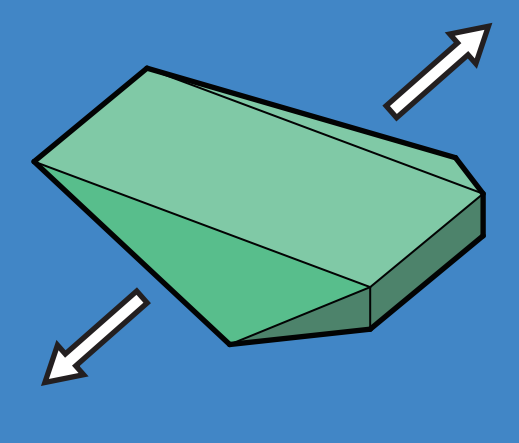
SAVE! YOUR PARK FROM FLOODING

STEP 1

Identify areas vulnerable to stormwater and floods

STEP 2

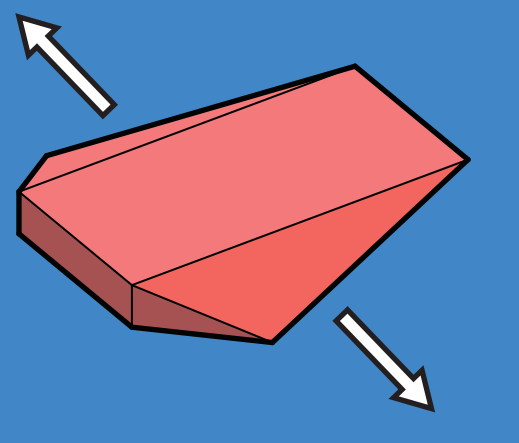
decide where to start your line of flood protection and place your starting piece



START PIECE

STEP 3

Use Berms, pieces to construct a landform that will protect the park and community from flooding



END PIECE

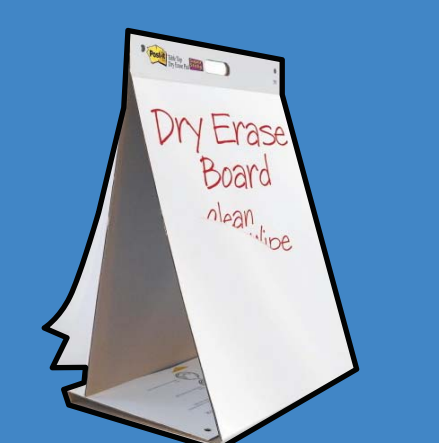
STEP 4

Apply stickers to your park landscape to let us know what sort of spaces you think your flood protection could create.



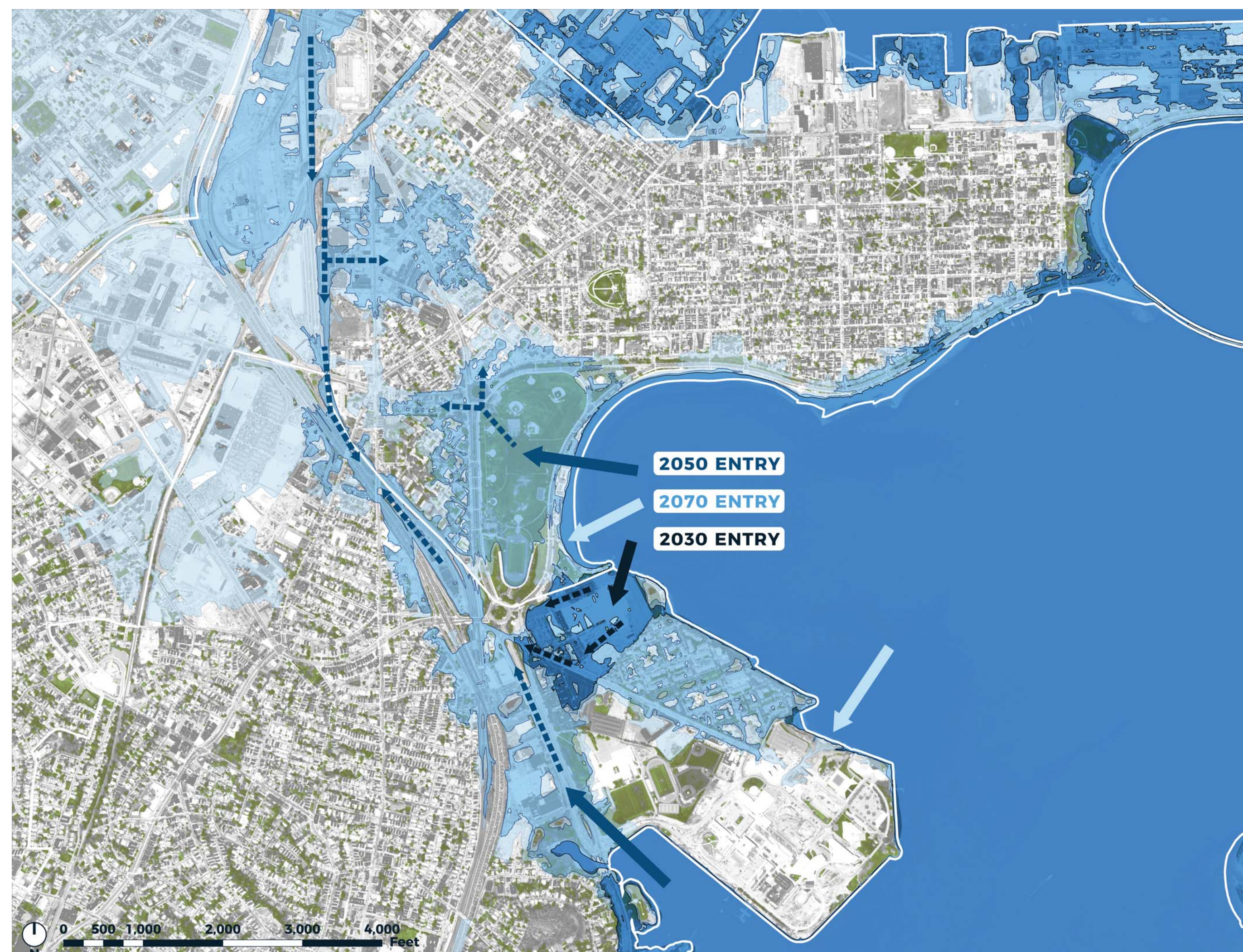
STEP 5

Let us know of any thoughts you had while completing this activity on the dry erase Board.

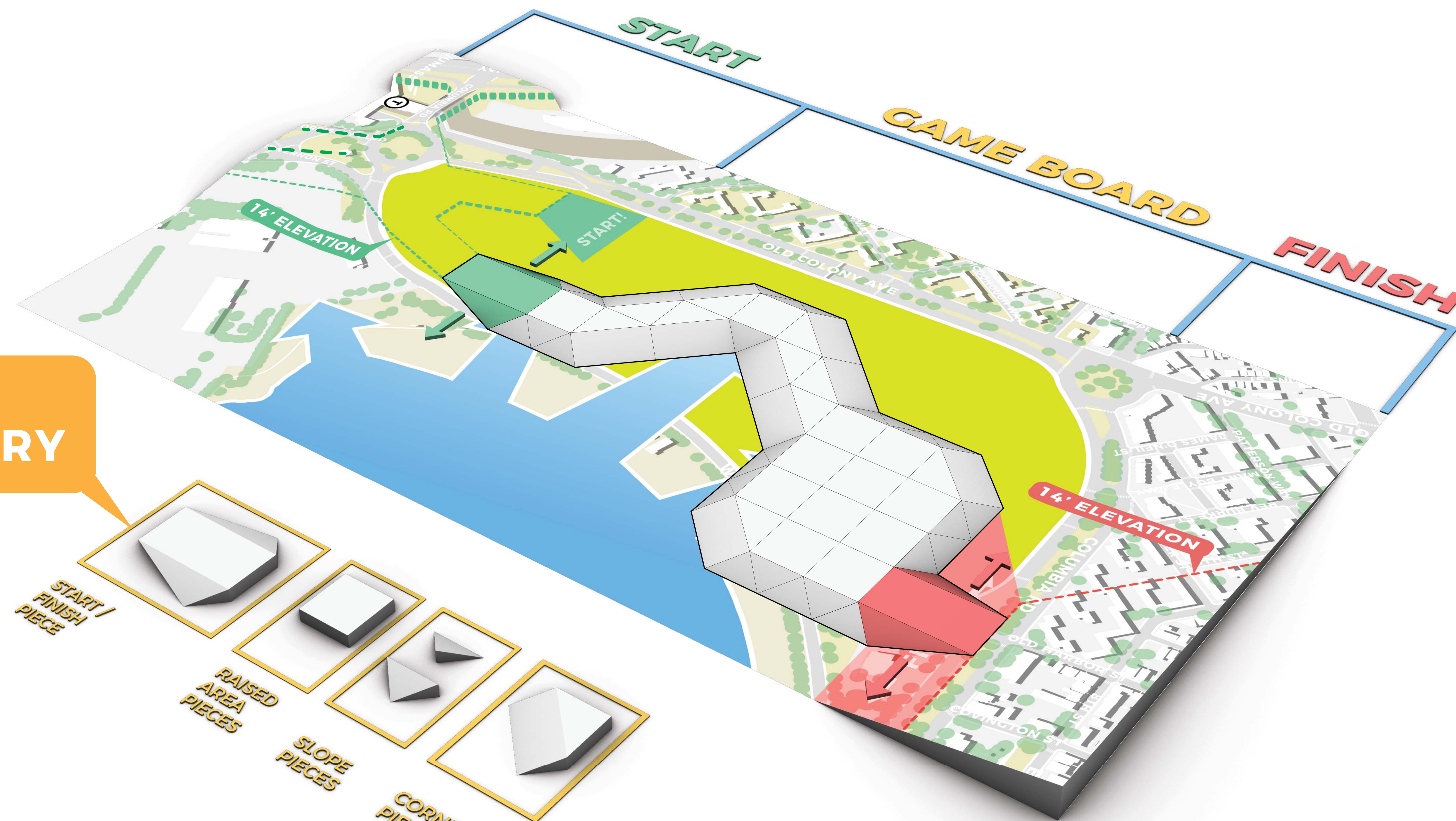


HERE'S THE SITUATION

Map of projected 1% storm events in 2030, 2050 and 2070



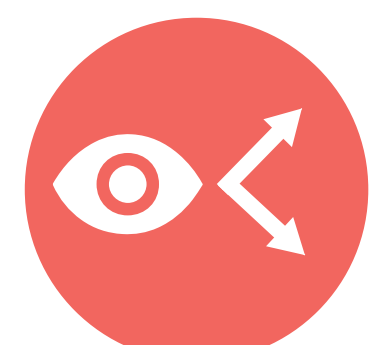
PIECE LIBRARY



STICKER LIBRARY



PASSIVE RECREATION



VIEWS

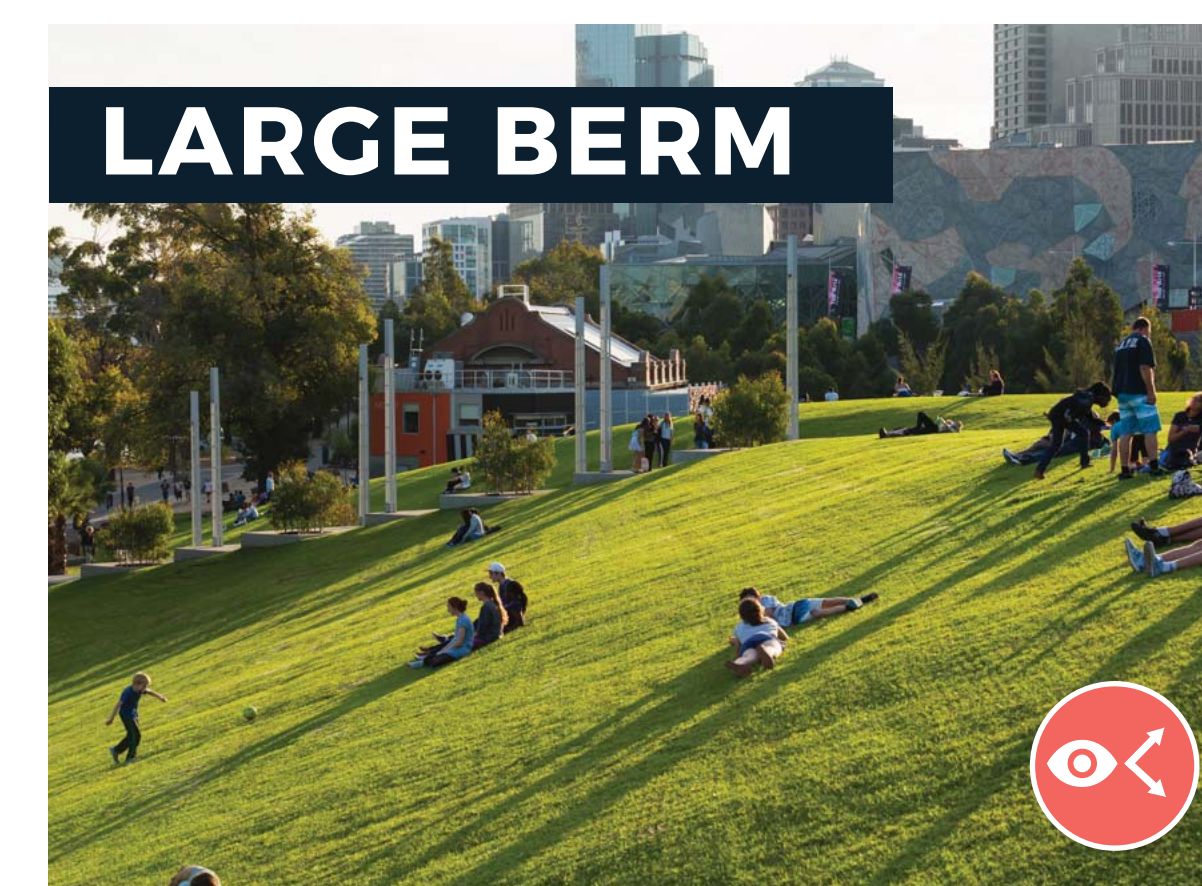
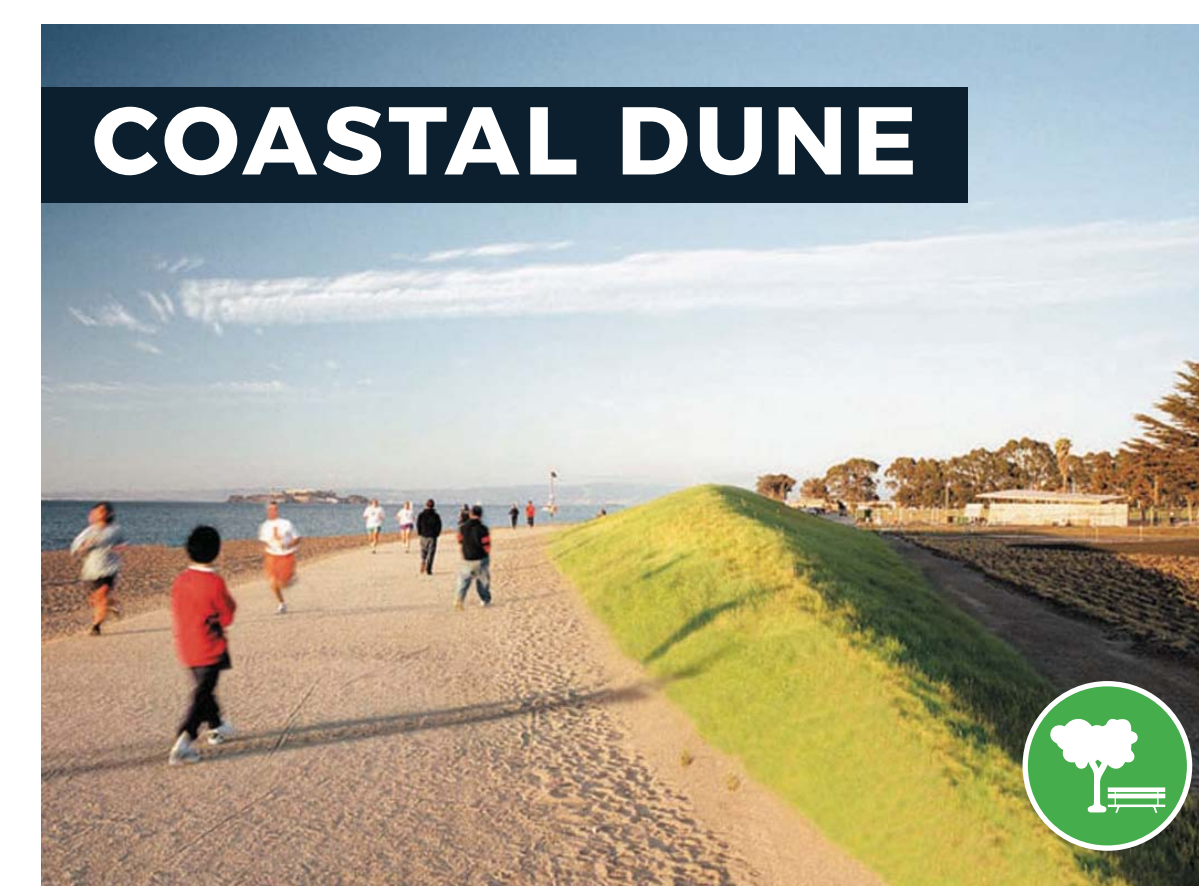
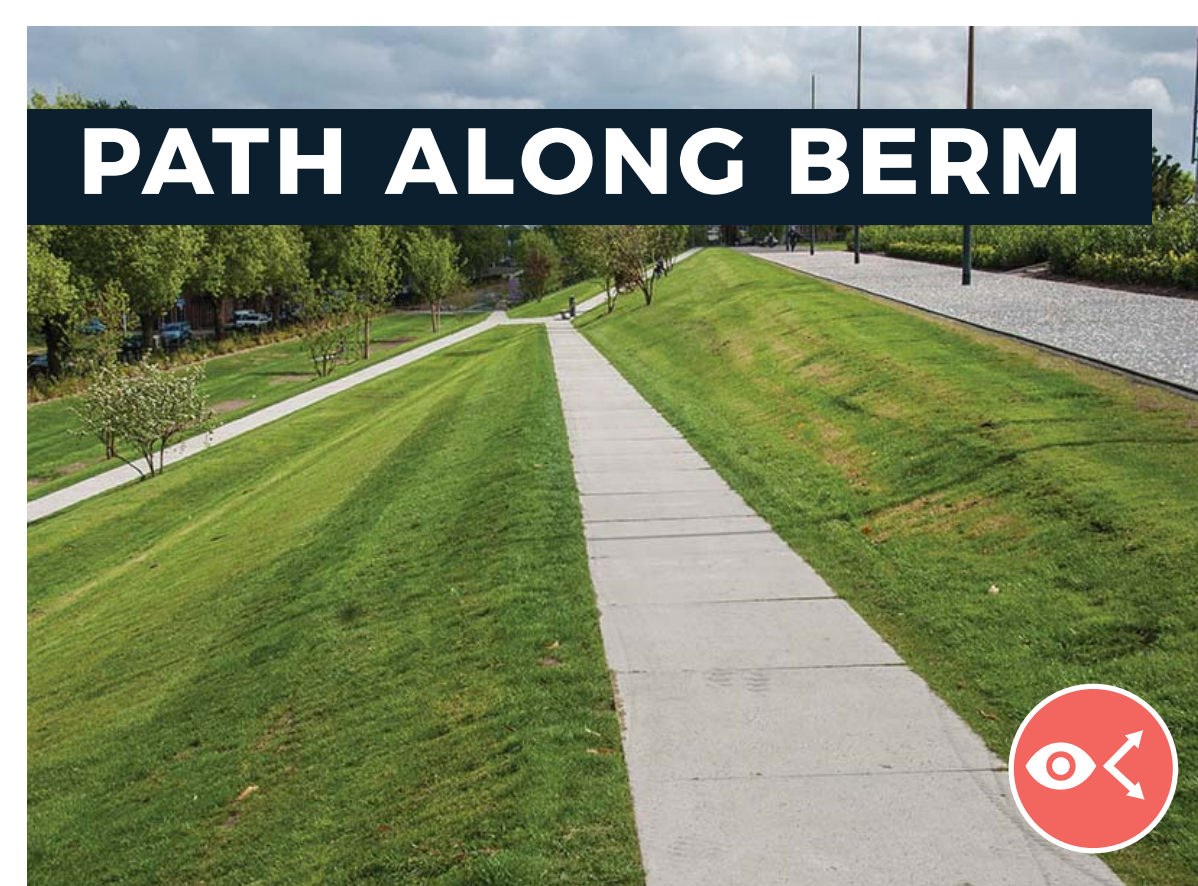


SPORTS



STORMWATER MANAGEMENT

SEE WHAT FLOOD PROTECTION CAN LOOK LIKE



5

GO OUTSIDE!

MEET THE COMMUNITY ADVISORY GROUP & TELL YOUR STORY

COMMUNITY ADVISORY GROUP

The Moakley Park Vision Plan Community Advisory Group will serve as a community liaison and support collaborative public dialogue and engagement for the Moakley Vision Plan. The group is made up of residents and neighborhood groups, environment and open space advocates, sports advisors, and design professionals.

Find our Community Advisory Group members and tell them about your thoughts on the Moakley Park Vision Plan!

RESIDENTS

AGUSTIN ESNAL
South Boston en Accion

ANNIE ZHANG
Grew up at Old Colony

MARY MOORE
Andrew Square
Civic Association

PATRICK O'MALLEY
Mary Ellen McCormack
Tenant Task Force

KATHY LAFFERTY
South Boston Neighborhood
House, South Boston
Association of Non-Profits

ANNA WHITE
South Boston Mom's group

ENVIRONMENT & OPEN SPACE

KATHY ABBOTT
Boston Harbor Now

MICHAEL CREASEY
National Parks Boston

TONY LECHUGA
LivableStreets' Emerald
Network Initiative

SPORTS

SAMANTHA PERINO
Boston Touch Rugby Association,
Boston Women's Rugby,
Charles River Rugby

WILLIAM BAKER
South Boston Youth Soccer

BILLY COLLINS
South Boston Little League

DESIGN

JILLIAN FARRELL
Continuum,
South Boston resident

THEODORE TOULOUKIAN
Touloukian Touloukian Inc,
South Boston resident

TELL YOUR STORY!



We're in the process of interviewing people who live near the park, who work near the park, or come visit the park and asking them to tell us their story!

How are you connected to the park? How does the park affect you? What are your favorite moments in the park? How would you like the Moakley Park Vision Plan to address these things?

***Get interviewed tonight or stop by the Mary Ellen McCormack Task Force & Senior Center on Thursday, July 26th from 8am-11am or on Tuesday, July 31st from 4pm-7pm for additional time to get interviewed!**