



RUTHERFORD AVE/ SULLIVAN SQUARE DESIGN PROJECT

PUBLIC MEETING

March 28, 2018



PROJECT TIMELINE

Public Meetings:

- June 30, 2016
- October 26, 2016
- February 28, 2017
- May 18, 2017
 - Underpass Plan Announced
- November 15, 2017
 - Urban Design
- January 24, 2018
 - Sullivan Square
- March 28, 2018
 - Walking, Biking + Linear Parks
- August, 2018
 - 25% Design Public Hearing

Design Effort:

Preliminary Design

June 2018

Final Design

July 2020

Advertise Construction

August 2020



PROJECT GOALS

- Improve pedestrian connections/safety to MBTA Transit Stations and community.
- Decrease traffic congestion.
- Provide bicycle connections.
- Protect Main Street from cut-through traffic.
- Create public/open space.
- Provide opportunities for appropriate development.



WALKING, BIKING + LINEAR PARKS



Boston Transportation Department



boston planning & development agency



TETRA TECH



HARRIMAN



Brown, Richardson + Rowe, Inc.
Landscape Architects and Planners



JANUARY PRESENTATION CONTENTS

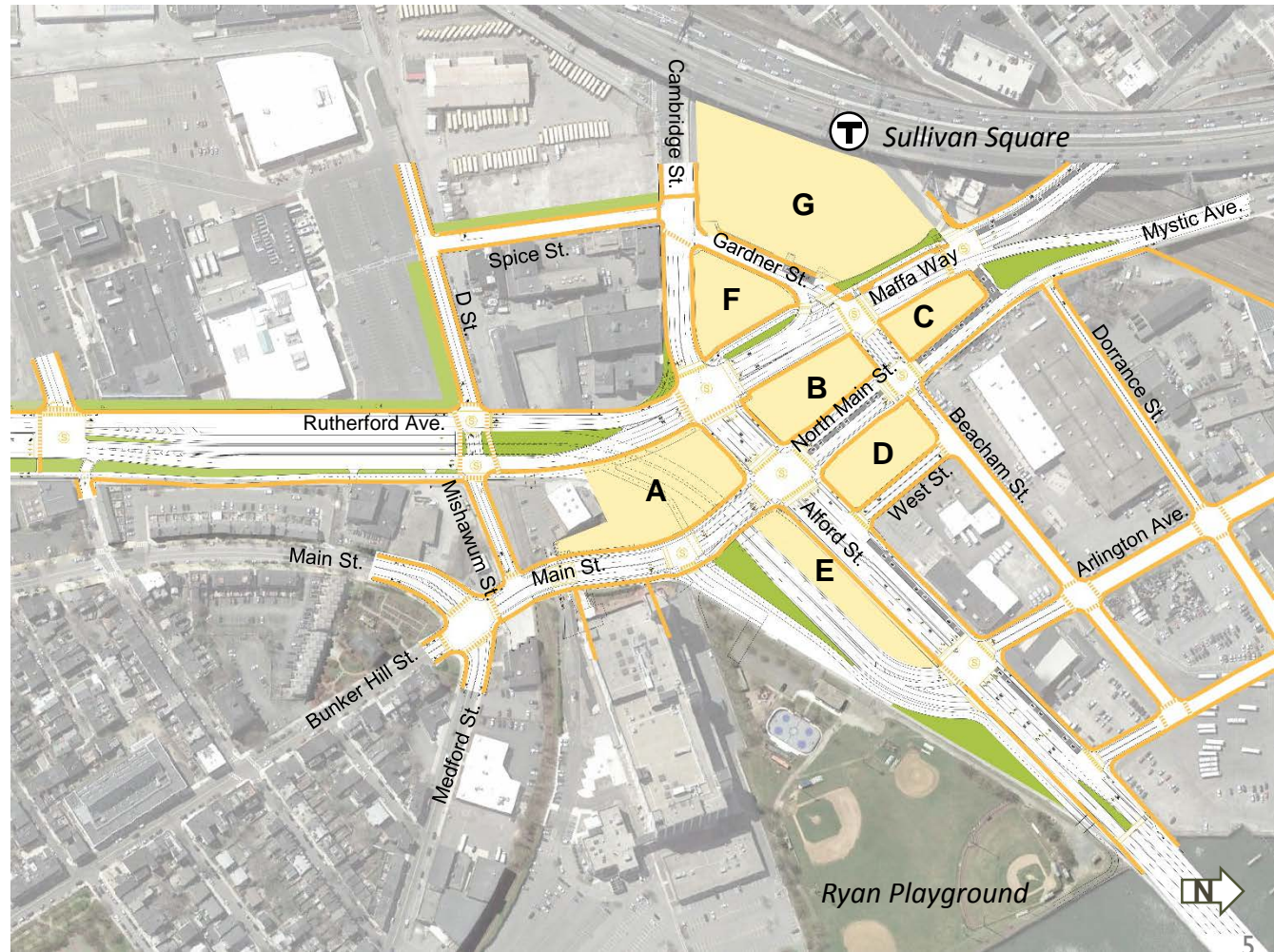
Current Roadway Layout

- Future development blocks
- Street tree opportunities
- On-street parking opportunities

Blocks and Street Alignments

- Development parcel dimensions
- Civic space design opportunities
- Pedestrian activated frontages
- Sidewalk width studies
- Underground parking considerations
- Residential frontages

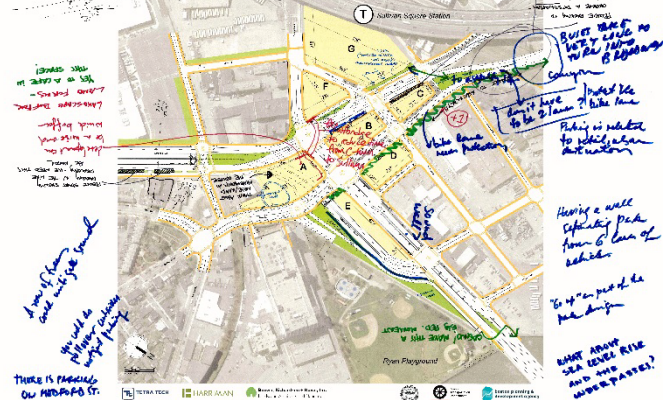
Discussion Tables



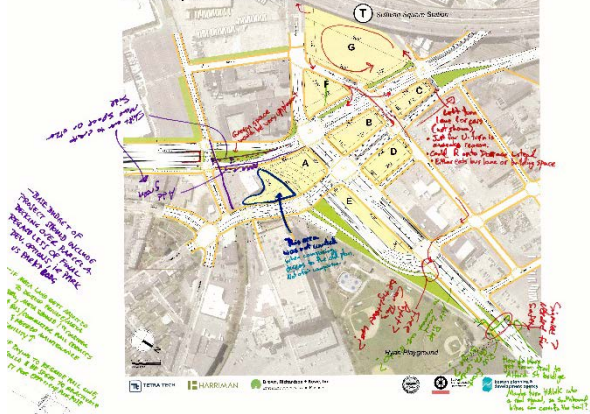
RUTHERFORD AVENUE 25% DESIGN PHASE: URBAN DESIGN Sullivan Square - Current Layout January 24, 2016



RUTHERFORD AVENUE 25% DESIGN PHASE: URBAN DESIGN Sullivan Square - Current Layout January 25, 2016



RUTHERFORD AVENUE 25% DESIGN PHASE: URBAN DESIGN Sullivan Square - Current Layout January 24, 2016



RUTHERFORD AVENUE 25% DESIGN PHASE: URBAN DESIGN Sullivan Square - Current Layout January 24, 2016



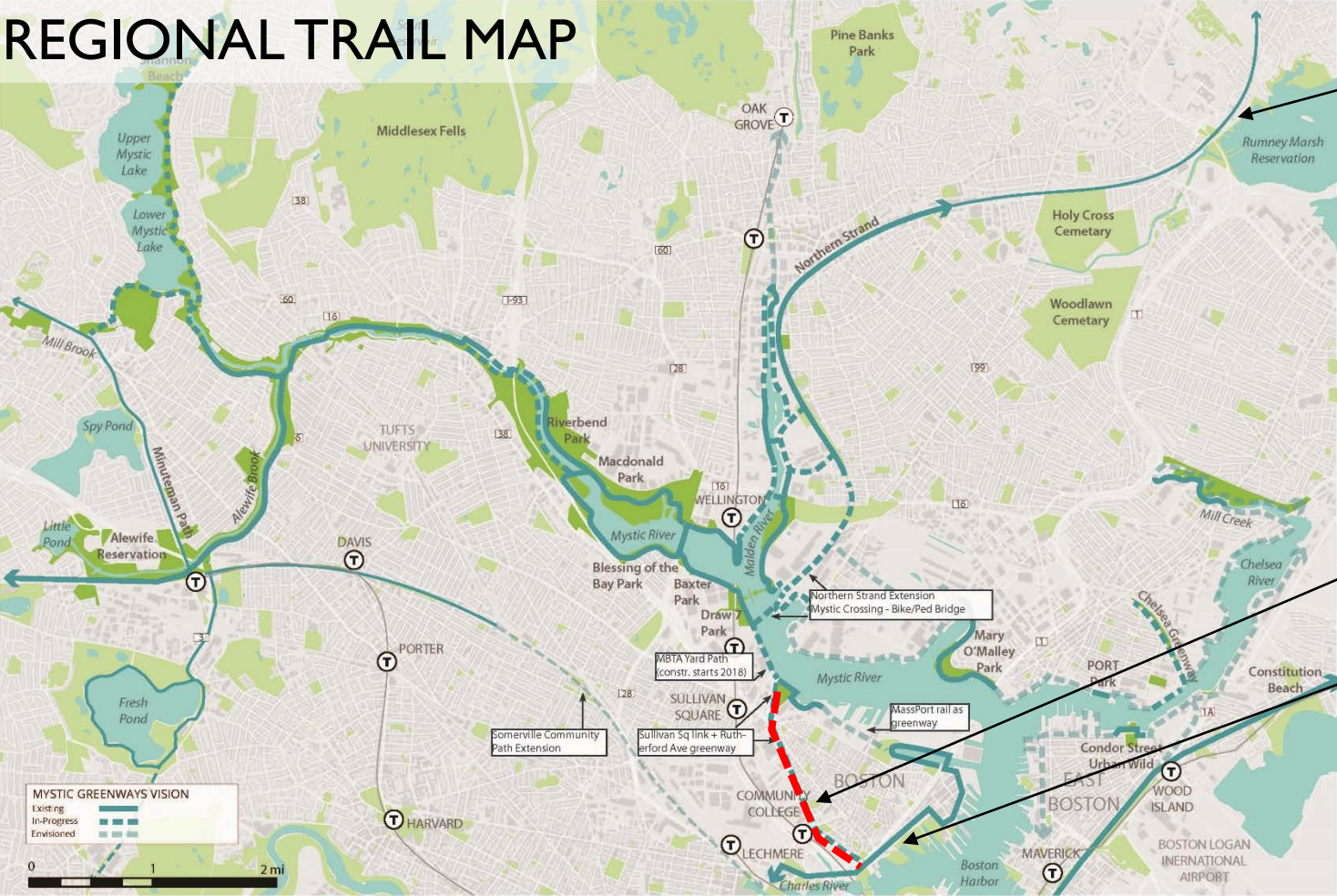
JANUARY PRESENTATION FEEDBACK



- **WALKING + BIKING ALONG THE CORRIDOR**
- **MIXING ZONES + CROSSINGS**
- **CONNECTIONS**
- **OPEN SPACE OPPORTUNITIES**
- **TREE CANOPY/
GREEN INFRASTRUCTURE**



REGIONAL TRAIL MAP



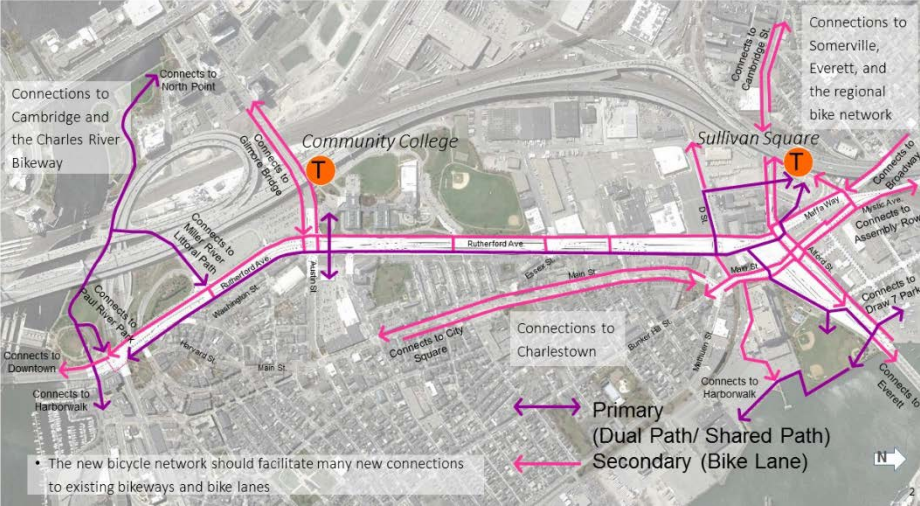
Northern Strand

Rutherford Ave Trail Connection

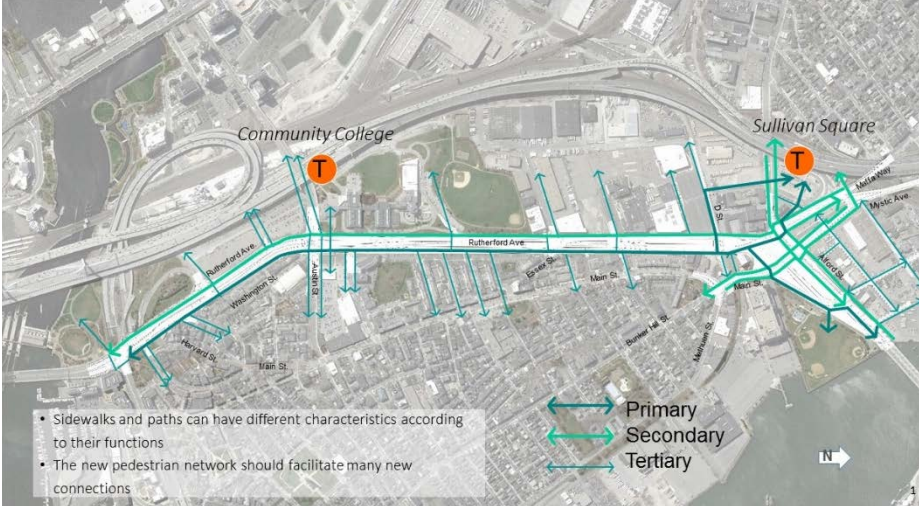
Charles River Bikeway

Map Source: Mystic River Watershed Association

BICYCLE AND PEDESTRIAN CONNECTIONS



Bicycles



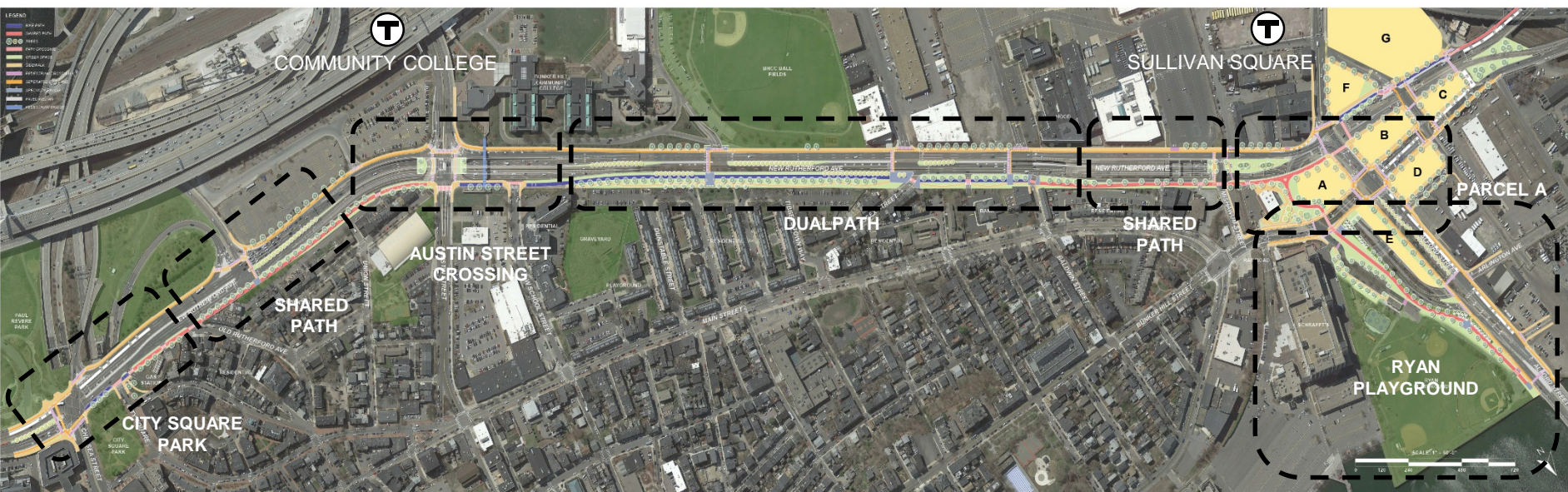
Pedestrians



LINEAR PARK AND BOULEVARD

LEGEND

- | | | | |
|---|----------------|---|----------------------|
|  | BIKE PATH |  | PEDESTRIAN CROSSWALK |
|  | SHARED PATH |  | SEPARATED BIKE LANE |
|  | TREES |  | SPECIALTY PAVING |
|  | PATH CROSSINGS |  | PAVED MEDIAN |
|  | GREEN SPACE |  | PEDESTRIAN BRIDGE |
|  | SIDEWALK | | |



LINEAR PARK AND BOULEVARD

LEGEND

- | | | | |
|---|----------------|---|----------------------|
|  | BIKE PATH |  | PEDESTRIAN CROSSWALK |
|  | SHARED PATH |  | SEPARATED BIKE LANE |
|  | TREES |  | SPECIALTY PAVING |
|  | PATH CROSSINGS |  | PAVED MEDIAN |
|  | GREEN SPACE |  | PEDESTRIAN BRIDGE |
|  | SIDEWALK | | |

WHAT IS THE DIFFERENCE BETWEEN DUAL PATH AND SHARED PATH?



DUAL PATH



SHARED PATH



DUAL PATH, Western Avenue, Cambridge



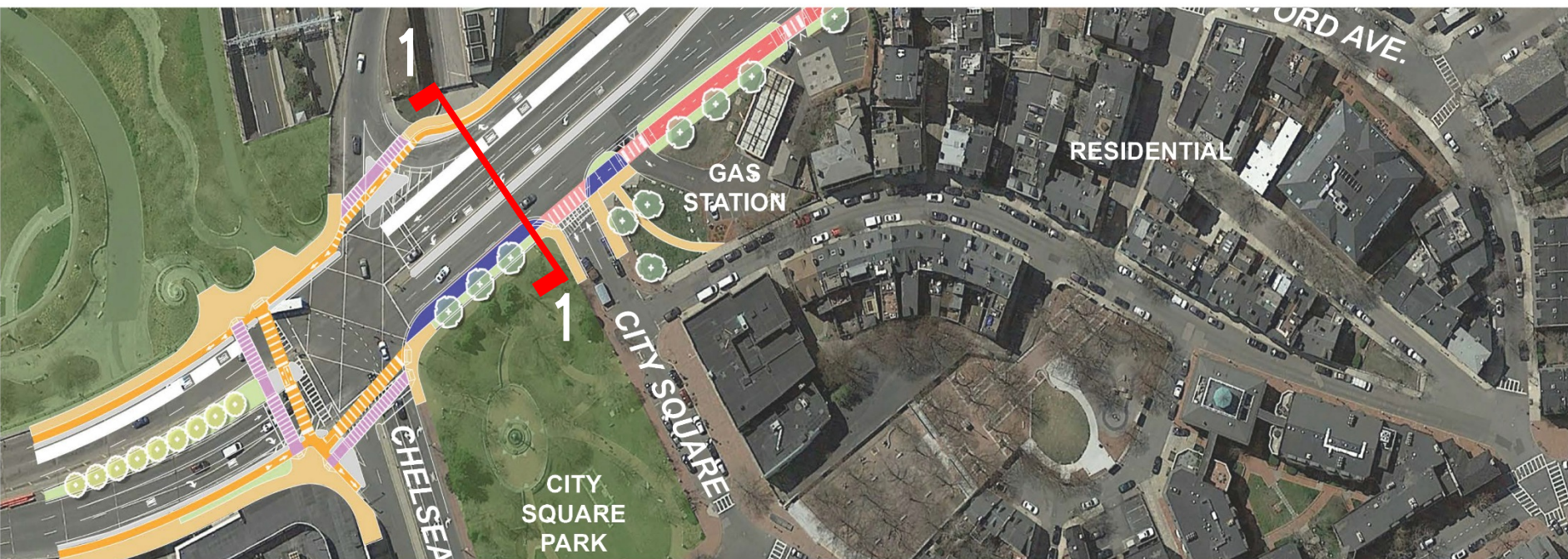
SHARED PATH, Indianapolis Cultural Trail

Source: Indyculturaltrail.org



I. CITY SQUARE PARK

- LEGEND**
- BIKE PATH
 - SHARED PATH
 - TREES
 - PATH CROSSINGS
 - GREEN SPACE
 - SIDEWALK
 - PEDESTRIAN CROSSWALK
 - SEPARATED BIKE LANE
 - SPECIALTY PAVING
 - PAVED MEDIAN
 - PEDESTRIAN BRIDGE

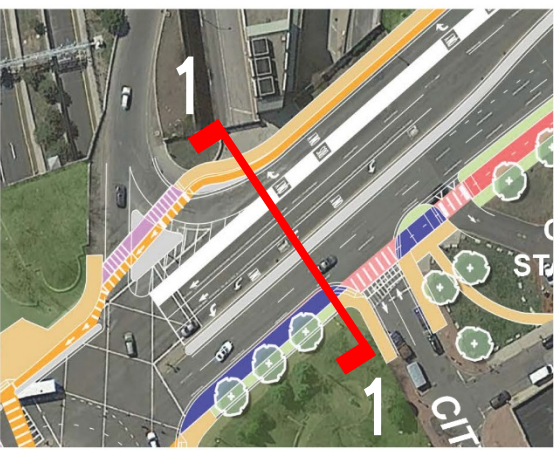


I. CITY SQUARE PARK

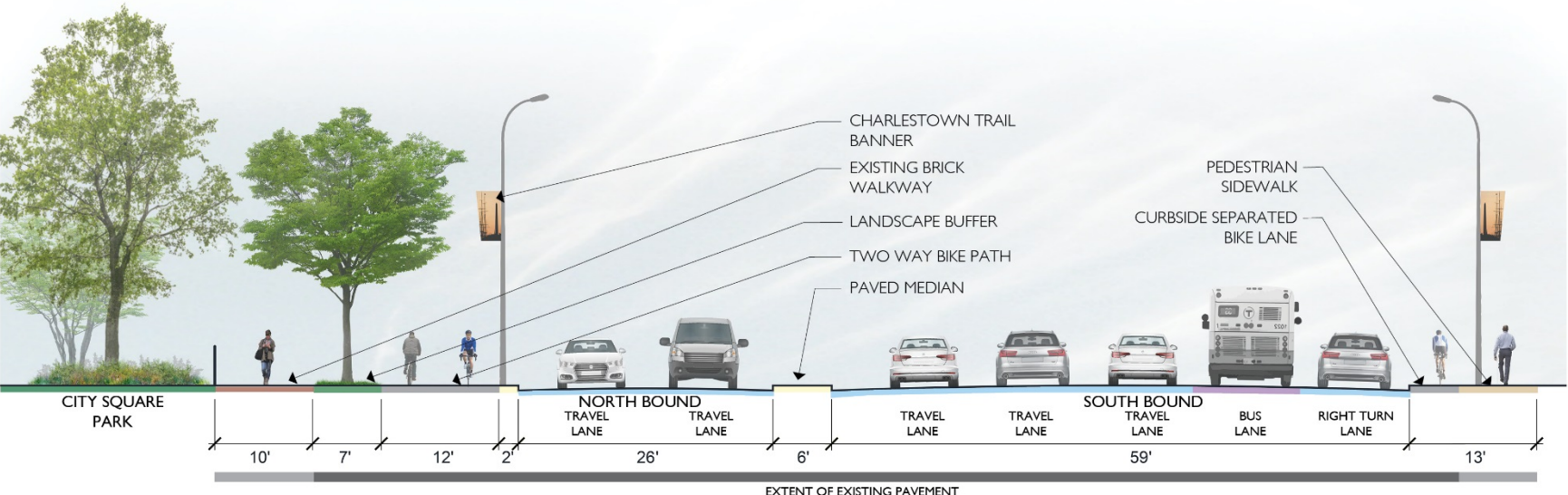
- Gateway to the Neighborhood and the City
- Connection to Washington Street Bridge
- Existing City Square Park Asset

LEGEND

	BIKE PATH		PEDESTRIAN CROSSWALK
	SHARED PATH		SEPARATED BIKE LANE
	TREES		SPECIALTY PAVING
	PATH CROSSINGS		PAVED MEDIAN
	GREEN SPACE		PEDESTRIAN BRIDGE
	SIDEWALK		

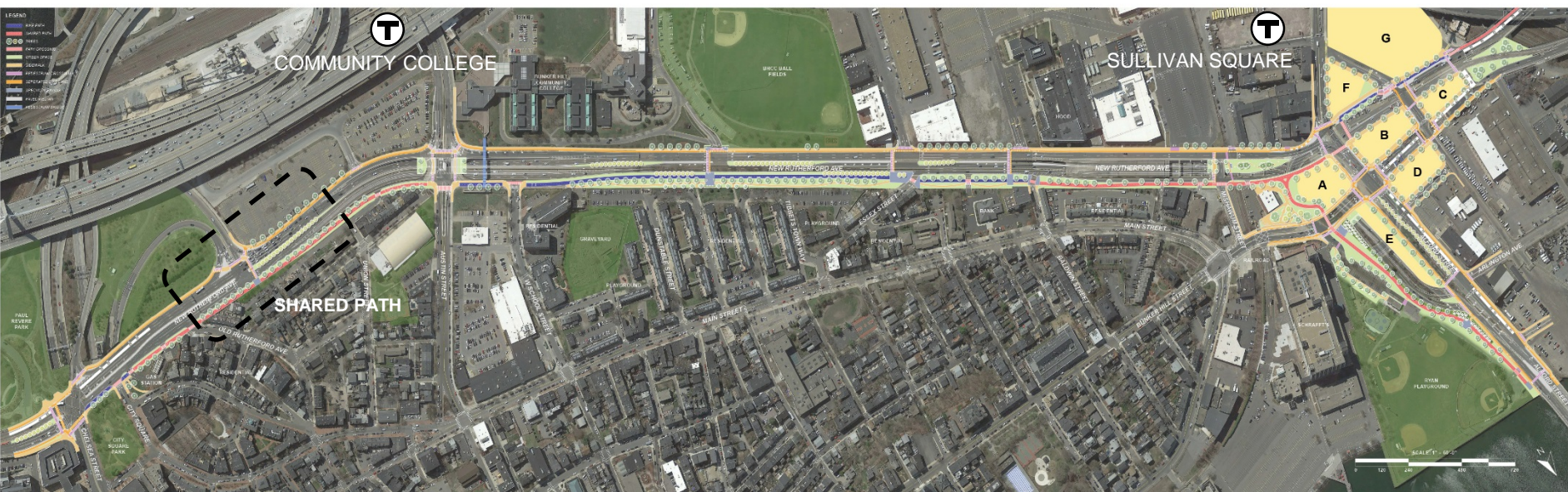


- 10' wide existing brick sidewalk
- 7' wide treeway
- 12' wide two-way bike path



I. CITY SQUARE PARK





2. SHARED PATH

LEGEND

- | | | | |
|---|----------------|---|----------------------|
|  | BIKE PATH |  | PEDESTRIAN CROSSWALK |
|  | SHARED PATH |  | SEPARATED BIKE LANE |
|  | TREES |  | SPECIALTY PAVING |
|  | PATH CROSSINGS |  | PAVED MEDIAN |
|  | GREEN SPACE |  | PEDESTRIAN BRIDGE |
|  | SIDEWALK | | |

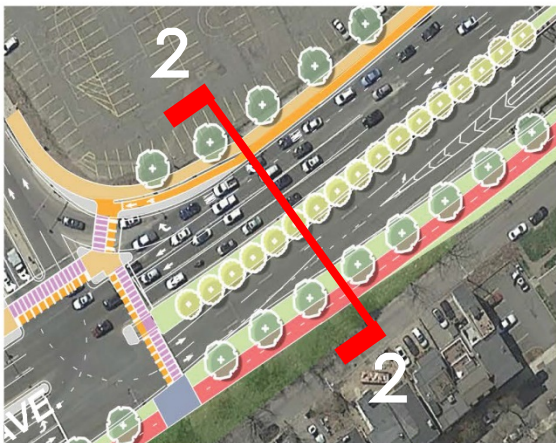


2. SHARED PATH

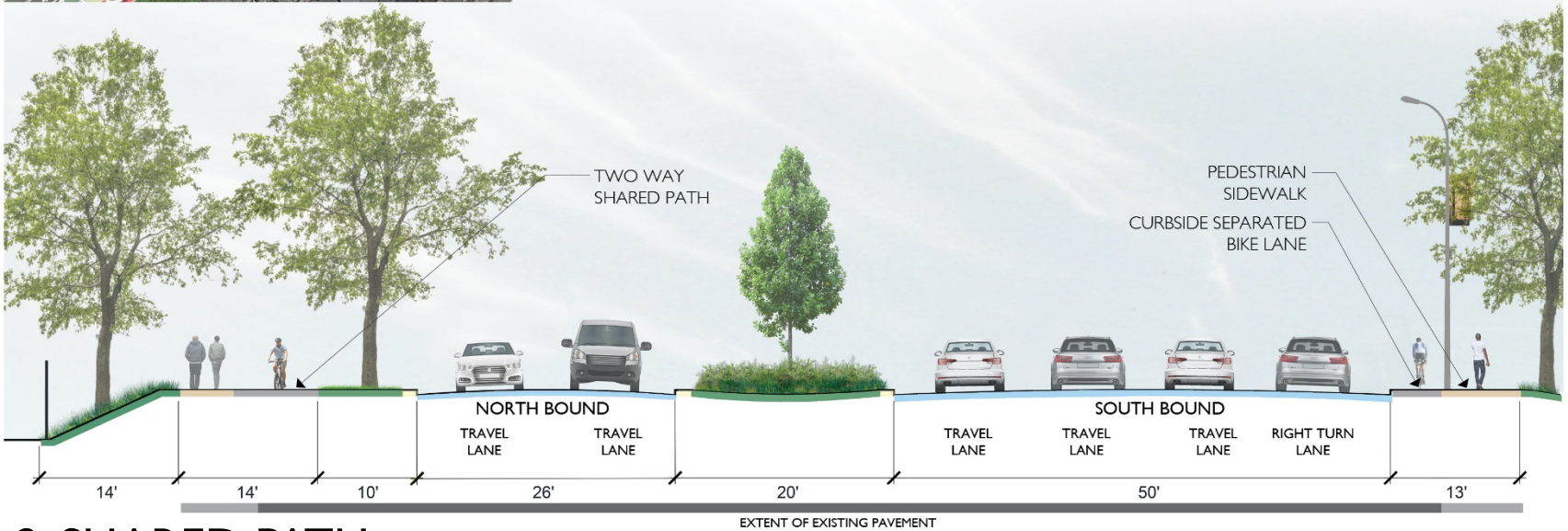
- Narrow existing right of way
- Add wide path + landscaped buffer
- Improve crossings
- Opportunity for additional buffer with future development

LEGEND

	BIKE PATH		PEDESTRIAN CROSSWALK
	SHARED PATH		SEPARATED BIKE LANE
	TREES		SPECIALTY PAVING
	PATH CROSSINGS		PAVED MEDIAN
	GREEN SPACE		PEDESTRIAN BRIDGE
	SIDEWALK		



- 10' wide treeway
- 14' wide shared path
- 20' wide planted median

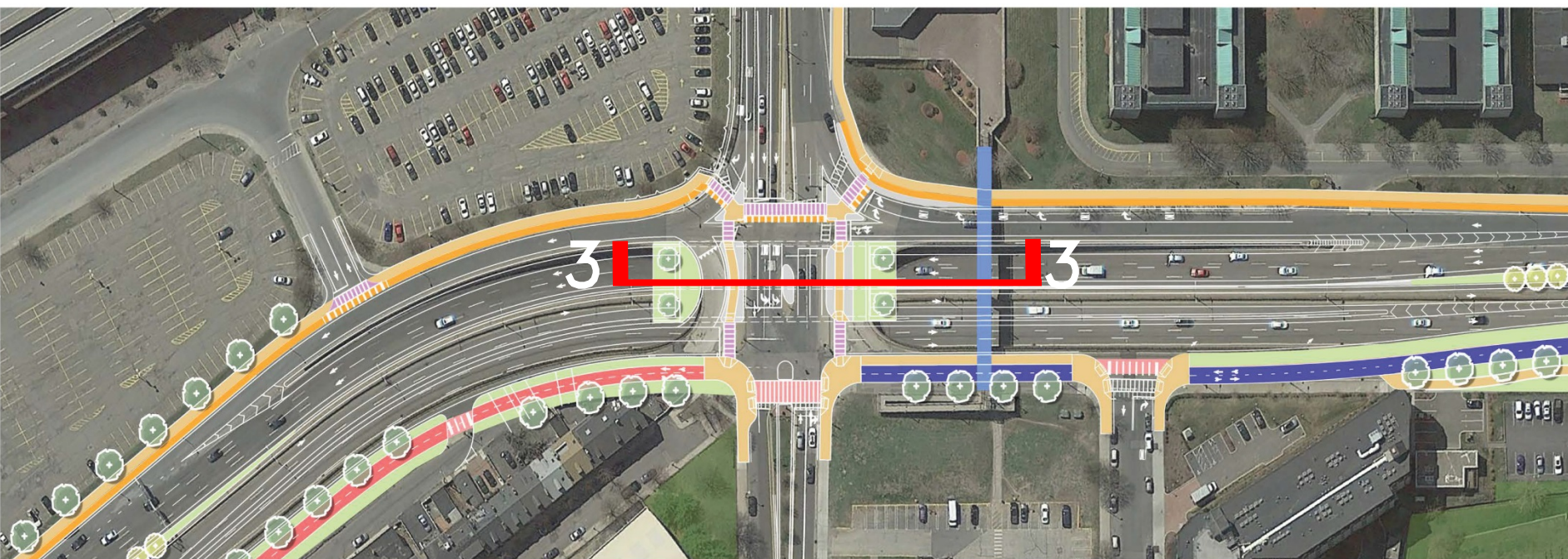


2. SHARED PATH



3. CROSSING AT AUSTIN STREET + RUTHERFORD AVENUE



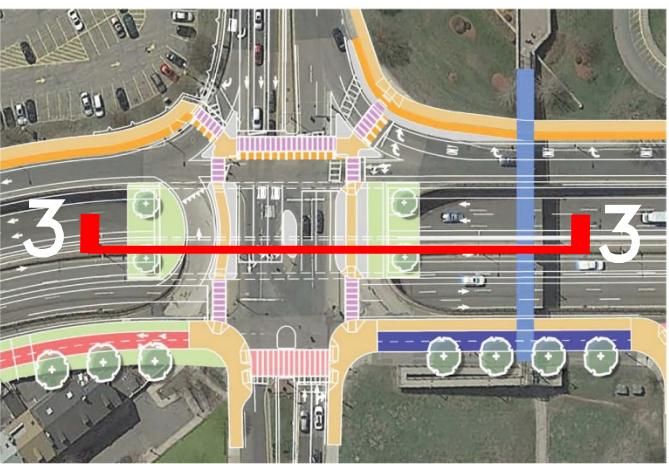


3. CROSSING AT AUSTIN STREET + RUTHERFORD AVENUE

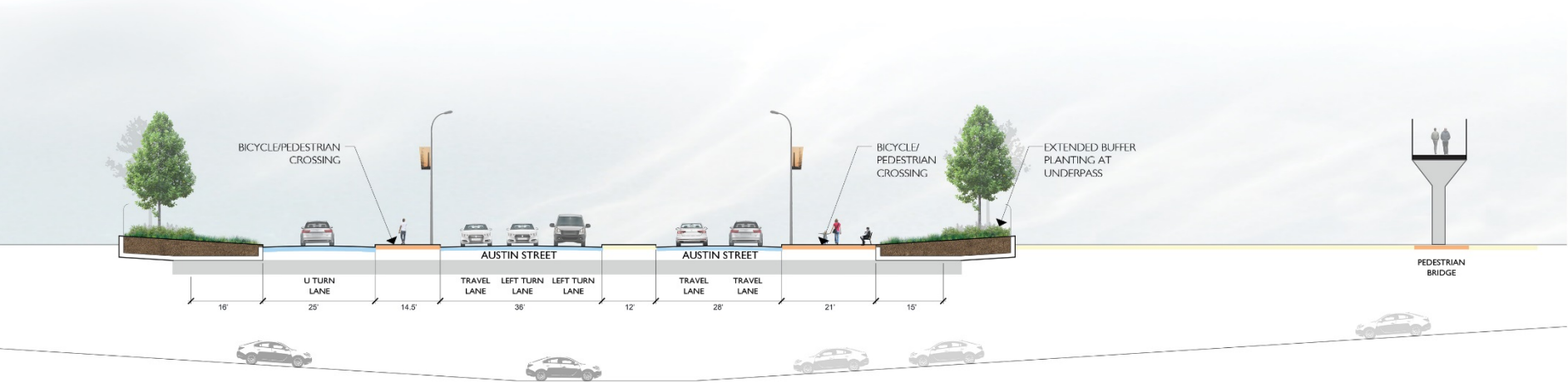
- New wider bridge for pedestrians and cyclists
- Improved crossings of reduced width
- Opportunity to add landscape at crossings

LEGEND

	BIKE PATH		PEDESTRIAN CROSSWALK
	SHARED PATH		SEPARATED BIKE LANE
	TREES		SPECIALTY PAVING
	PATH CROSSINGS		PAVED MEDIAN
	GREEN SPACE		PEDESTRIAN BRIDGE
	SIDEWALK		



Pedestrian Bridge, Constitution Beach, East Boston



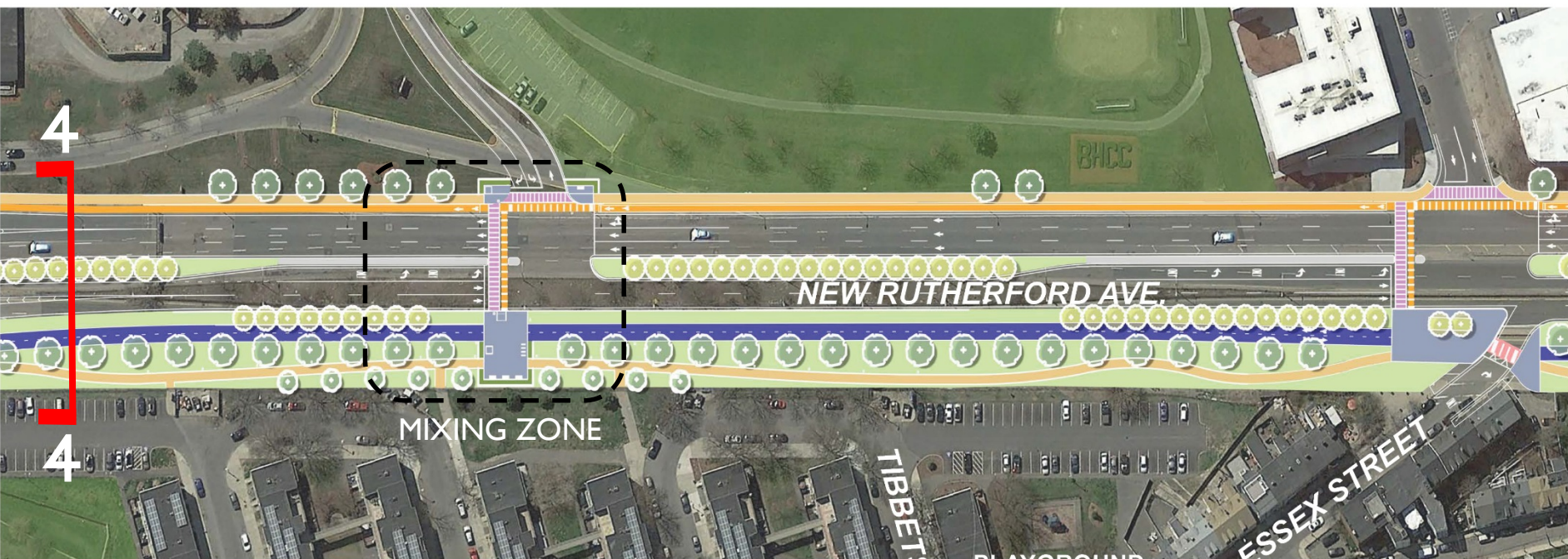
3. CROSSING AT AUSTIN STREET + RUTHERFORD AVENUE



4. DUAL PATH

LEGEND

- BIKE PATH
- PEDESTRIAN CROSSWALK
- SHARED PATH
- SEPARATED BIKE LANE
- TREES
- SPECIALTY PAVING
- PATH CROSSINGS
- PAVED MEDIAN
- GREEN SPACE
- PEDESTRIAN BRIDGE
- SIDEWALK

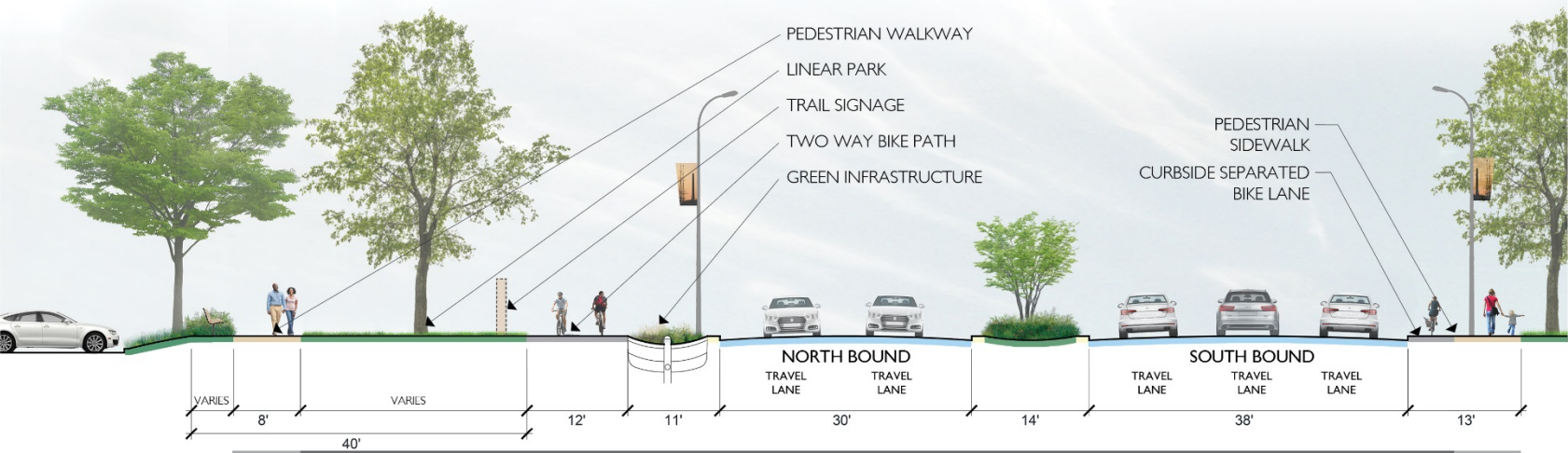
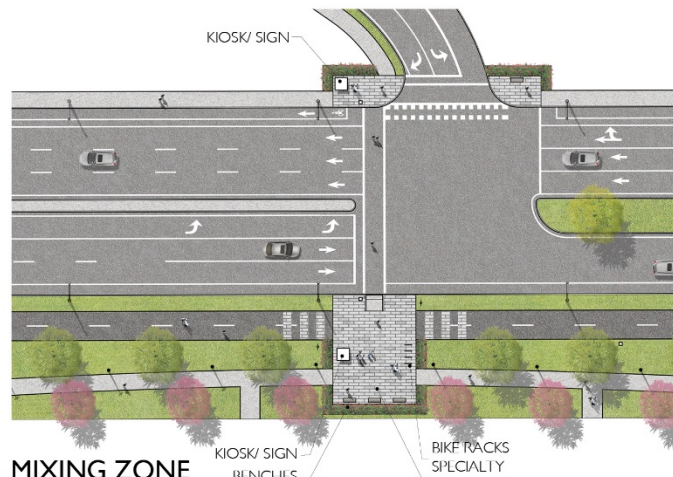
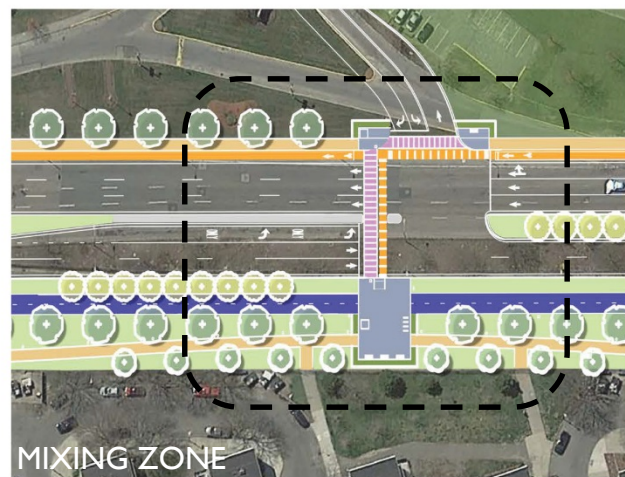
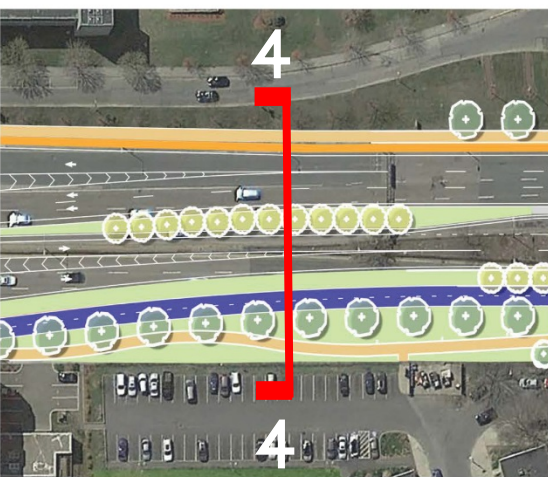


4. DUAL PATH

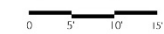
- Wider existing right of way
- Roadway converted to linear park (50' to 60' wide)
- Two way bike path and pedestrian sidewalk
- Opportunities at crossings
- Landscape and planting opportunities
- 8' wide pedestrian walkway
- 12' wide multi-use path

LEGEND

	BIKE PATH		PEDESTRIAN CROSSWALK
	SHARED PATH		SEPARATED BIKE LANE
	TREES		SPECIALTY PAVING
	PATH CROSSINGS		PAVED MEDIAN
	GREEN SPACE		PEDESTRIAN BRIDGE
	SIDEWALK		



4. DUAL PATH

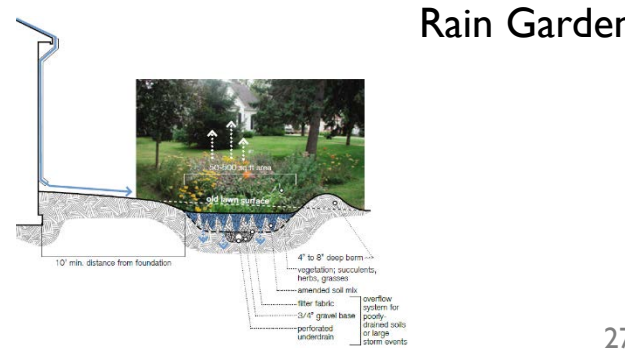
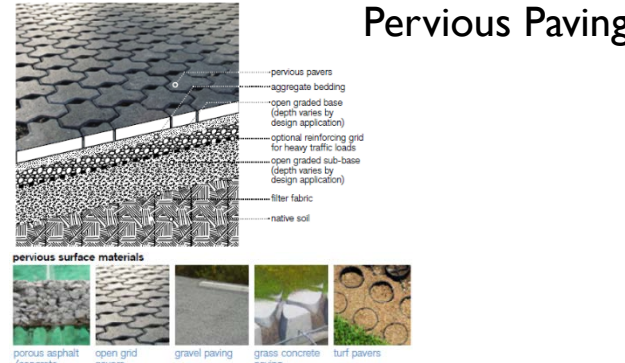
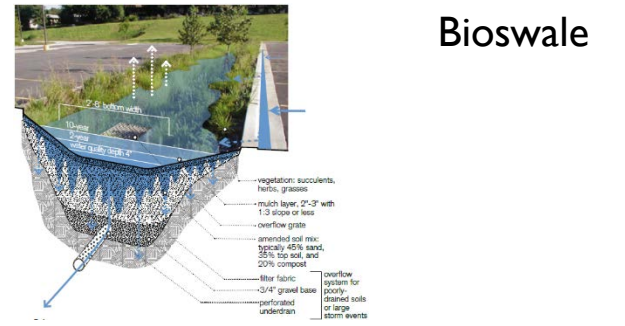
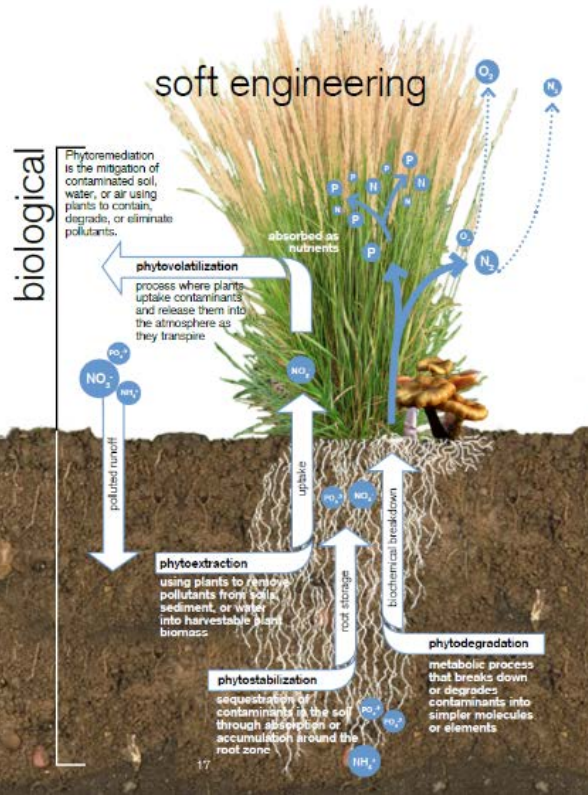
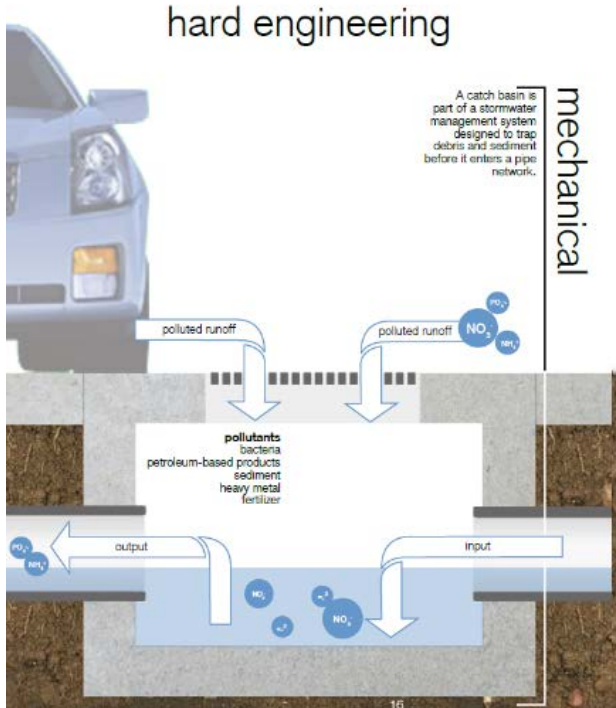




PEDESTRIAN + CYCLIST “MIXING ZONE”



DUAL PATH IN LINEAR PARK



- Using landscape to manage stormwater
- Reduce runoff in heavy rain events
- Replenish groundwater
- Reduce pollution
- Add Beauty

GREEN INFRASTRUCTURE



Dry Swale Adjacent to Ball Field *Image Source: Horsley Witten*



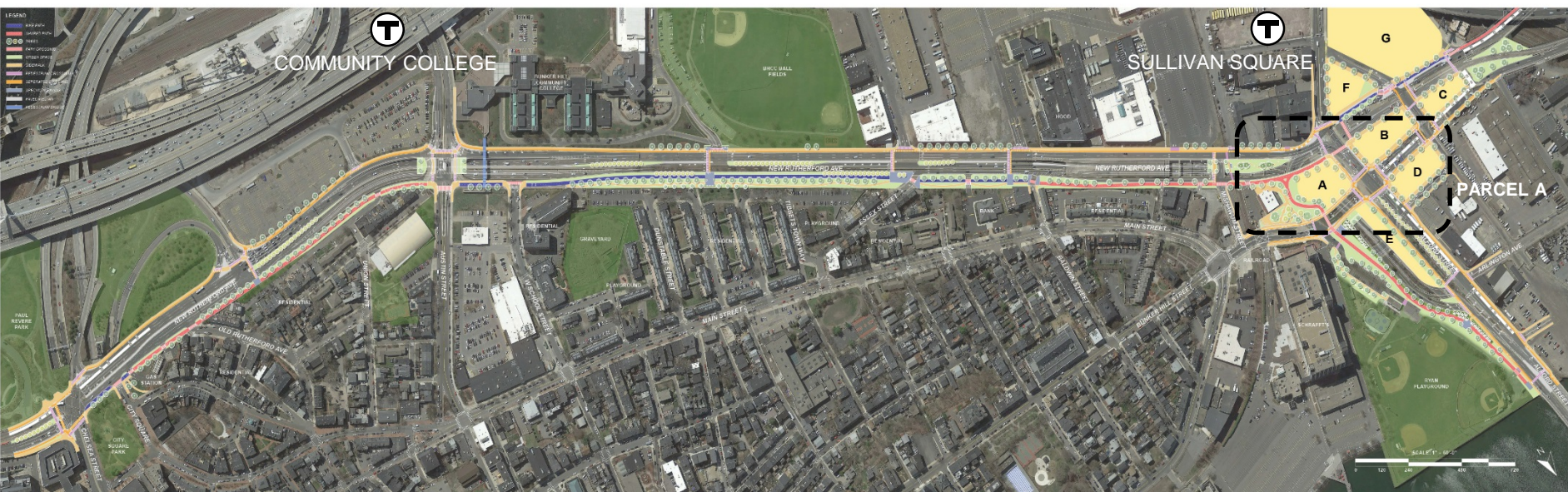
Stormwater Planters *Image Source: Clark Wilson, USEPA*



Pervious Paving
GREEN INFRASTRUCTURE



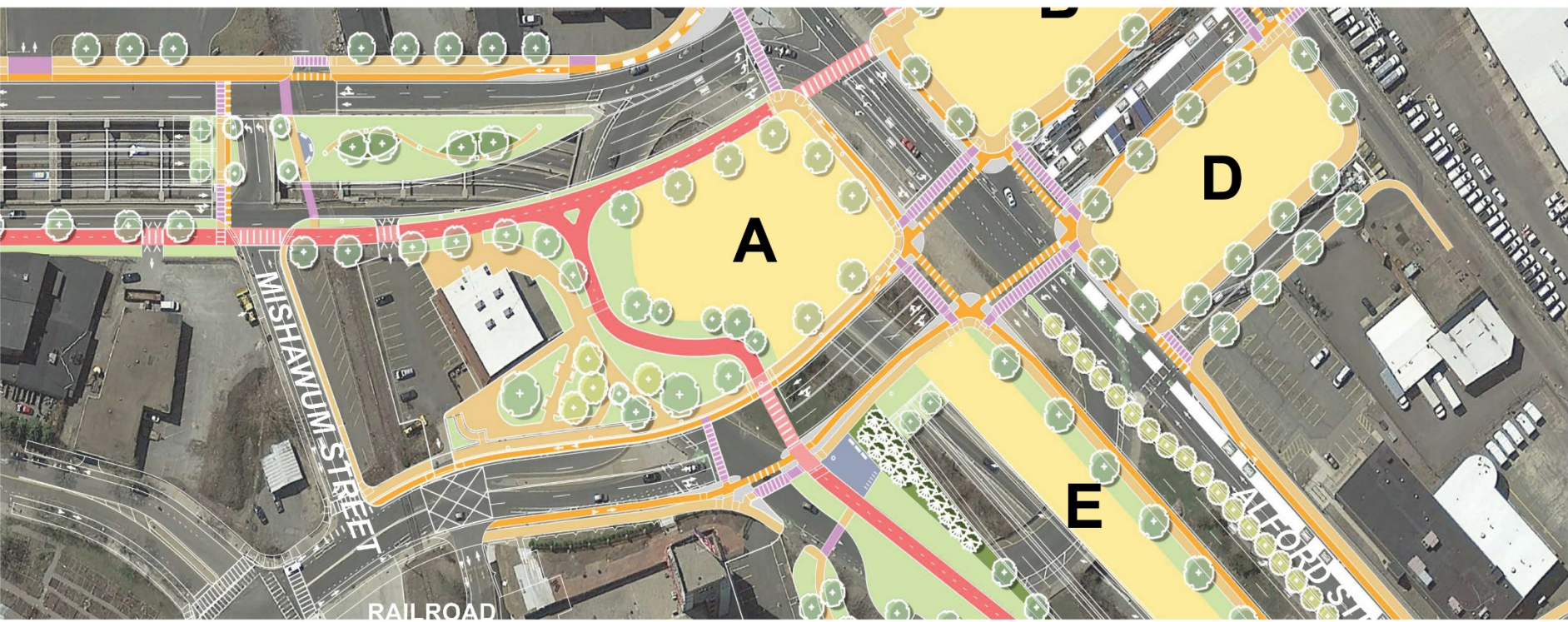
Green Street *Image Source: New York City Green Streets Initiative*



PARCEL A

LEGEND

- BIKE PATH
- SHARED PATH
- SEPARATED BIKE LANE
- PEDESTRIAN CROSSWALK
- TREES
- PATH CROSSINGS
- SPECIALTY PAVING
- PAVED MEDIAN
- GREEN SPACE
- PEDESTRIAN BRIDGE
- SIDEWALK

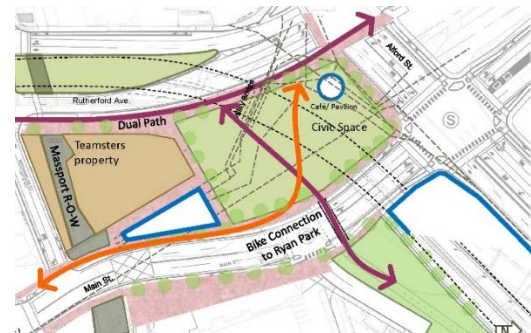
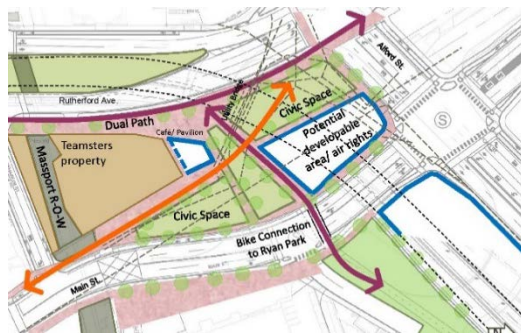
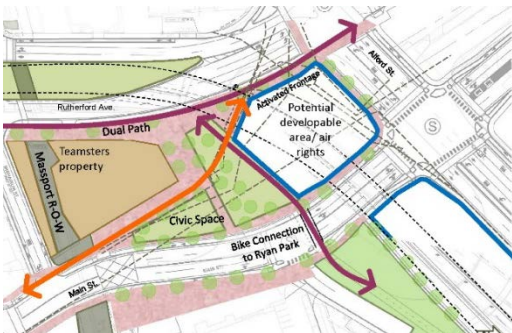


PARCELA

- Covered underpass
- Gateway space like City Square
- Civic open space + development opportunity
- Shared path splits to East, North + West

LEGEND

	BIKE PATH		PEDESTRIAN CROSSWALK
	SHARED PATH		SEPARATED BIKE LANE
	TREES		SPECIALTY PAVING
	PATH CROSSINGS		PAVED MEDIAN
	GREEN SPACE		PEDESTRIAN BRIDGE
	SIDEWALK		



OPTION 1
PARCELA OPTIONS

OPTION 2

OPTION 3



RYAN PLAYGROUND

LEGEND

- | | | | |
|--|----------------|--|----------------------|
| | BIKE PATH | | PEDESTRIAN CROSSWALK |
| | SHARED PATH | | SEPARATED BIKE LANE |
| | TREES | | SPECIALTY PAVING |
| | PATH CROSSINGS | | PAVED MEDIAN |
| | GREEN SPACE | | PEDESTRIAN BRIDGE |
| | SIDEWALK | | |



RYAN PLAYGROUND

- Work in Progress
- Opportunity to add park space
- Opportunities to improve access + parking
- Opportunity to enhance park as Gateway
- Green Infrastructure
- Connection to Regional Trails to North + East





RUTHERFORD AVE/ SULLIVAN SQUARE DESIGN PROJECT

PUBLIC MEETING

March 28, 2018