


Improvements to
**NOYES
PLAYGROUND**

Noyes Playground 



AGENDA

1

PROJECT TEAM INTRODUCTION

2

PROJECT OVERVIEW

3

PRESENTATION

4

LISTENING & DISCUSSION

5

CLOSING REMARKS & NEXT STEPS

PROJECT TEAM

Nathan Frazee

Project Manager

Nathan.frazee@boston.gov or 617-961-3167

Marchelle Jacques-Yarde

Outreach Coordinator, External Affairs

marchelle.jacques-yarde@boston.gov or 617-961-3006

Scott Landgren

Principal, CDM Smith

Danielle Mellett

Landscape Architect, CDM Smith

Steve Fusco

Landscape Architect, CDM Smith

Claudia Correa

Office of Neighborhood Services

Claudia.Correa@boston.gov or 617-635-2681





BCYF Martin Pino
Community Center

Basketball

Playground

Softball

Baseball

Noyes Playground

Little League

BCYF Martin Pino
Community Center

Ashley St

Boardman St

Ashley St

Leyden St

St Joseph &
Lazarus Church

East Boston YMCA

Boardman St

Ford St

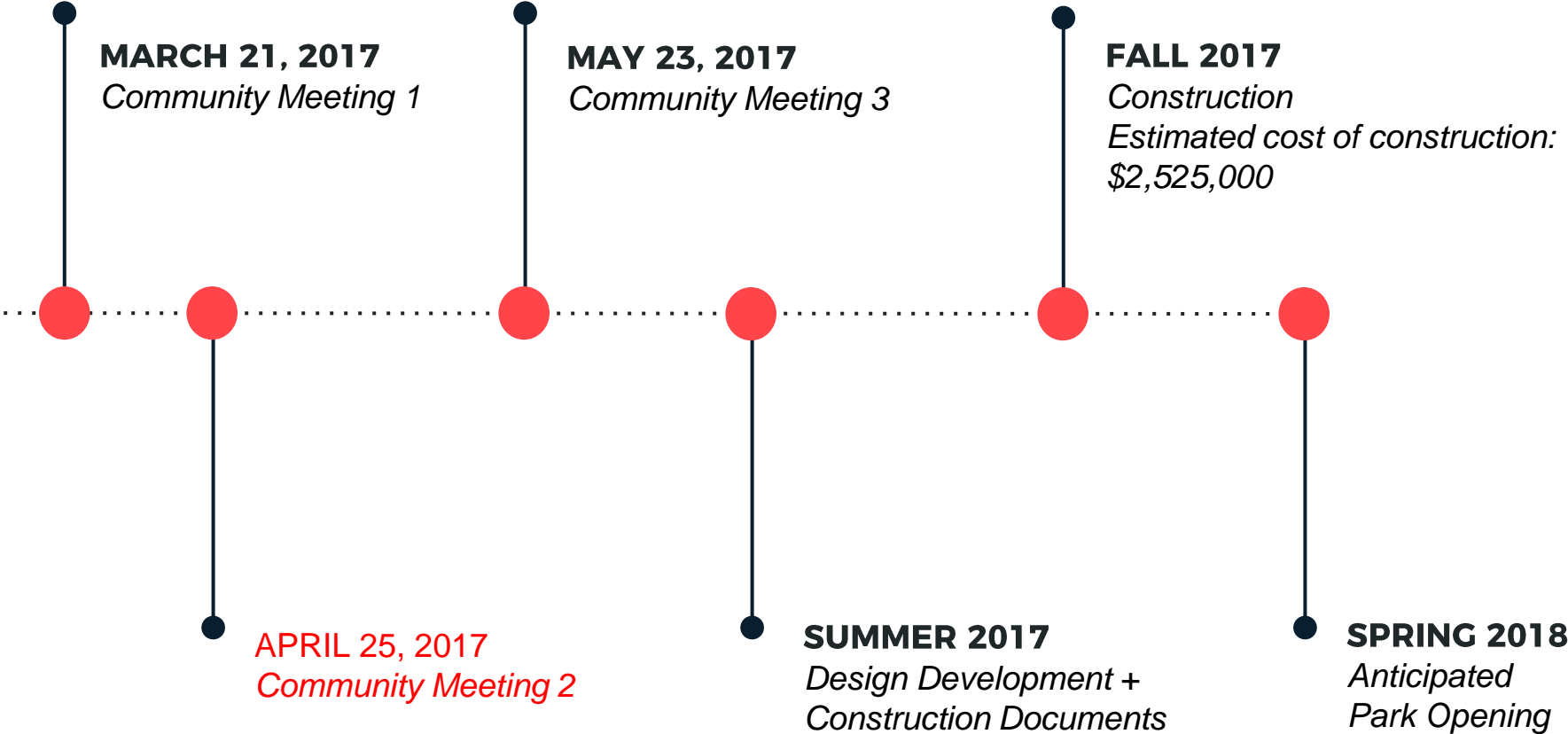
Ruggiero Family
Memorial Home

Saratoga St

Burger King

Brandyw

PROJECT SCHEDULE & FUNDING





City of Boston
Initiatives

Safety Guidelines+
Environmental
Regulations

**PARK
DESIGN**

Parks + Recreation
Goals

Community
Input

CITY OF BOSTON INITIATIVES

- **Inclusion**
- **Shade**
- **Access to Parks**
- **Drinking / Bottle Filling Stations**
- **Water Play**
- **Climate Resiliency**

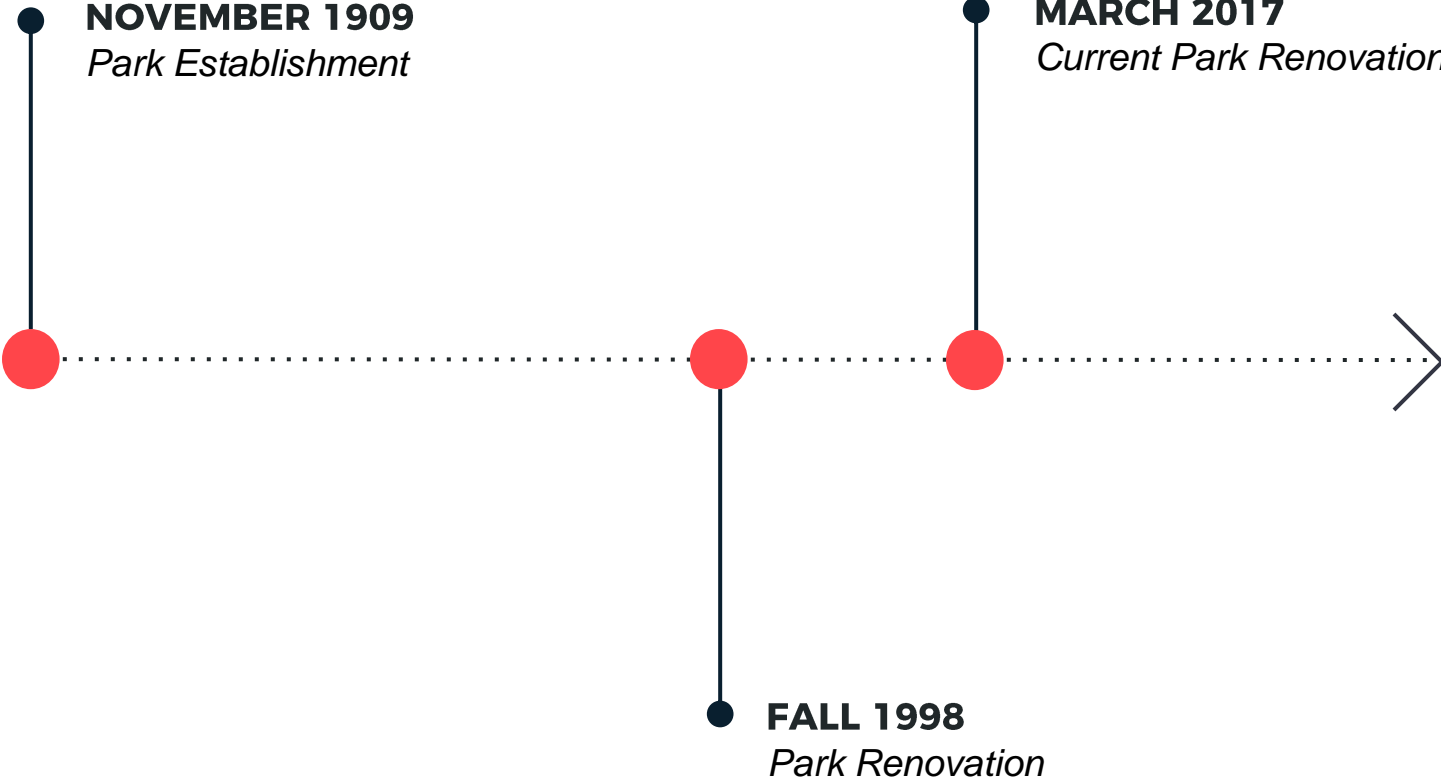


PARK & RECREATION GOALS

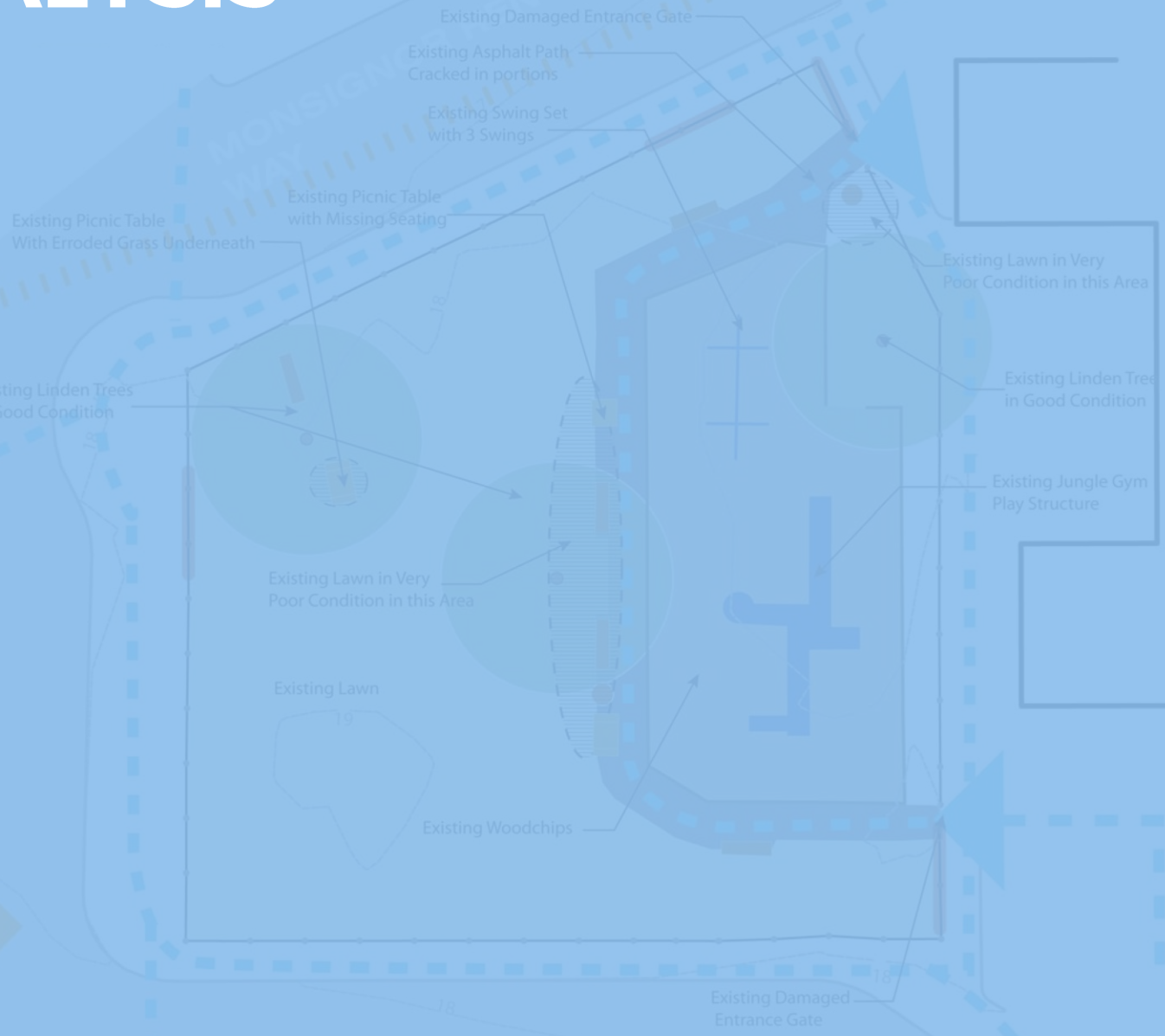
- **Preserve and protect existing trees**
- **Expand usable park area**
- **Improve universal access**
- **Enhance park visibility**
- **Improve access to parks**
- **Design flexible, multi-functional park spaces**

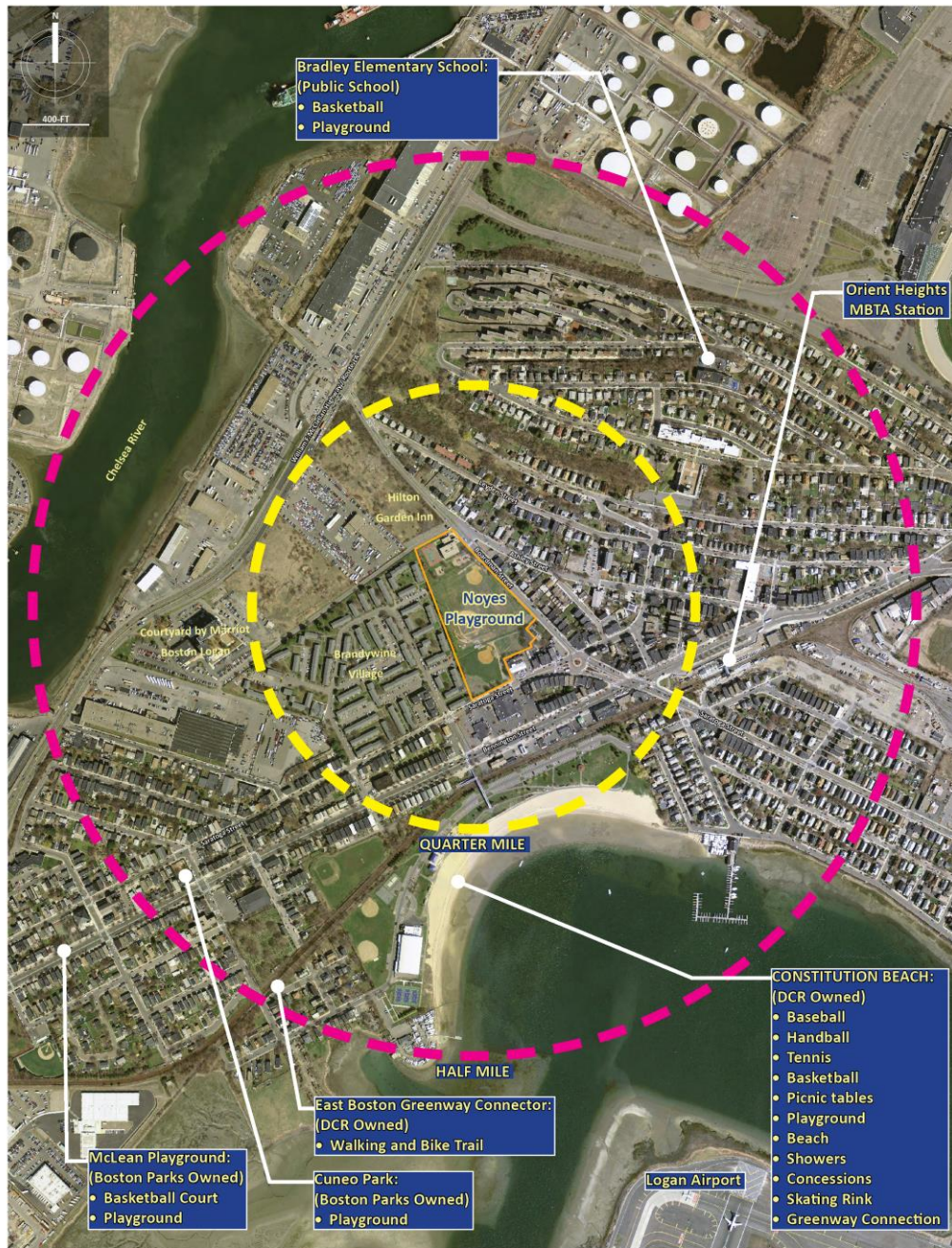


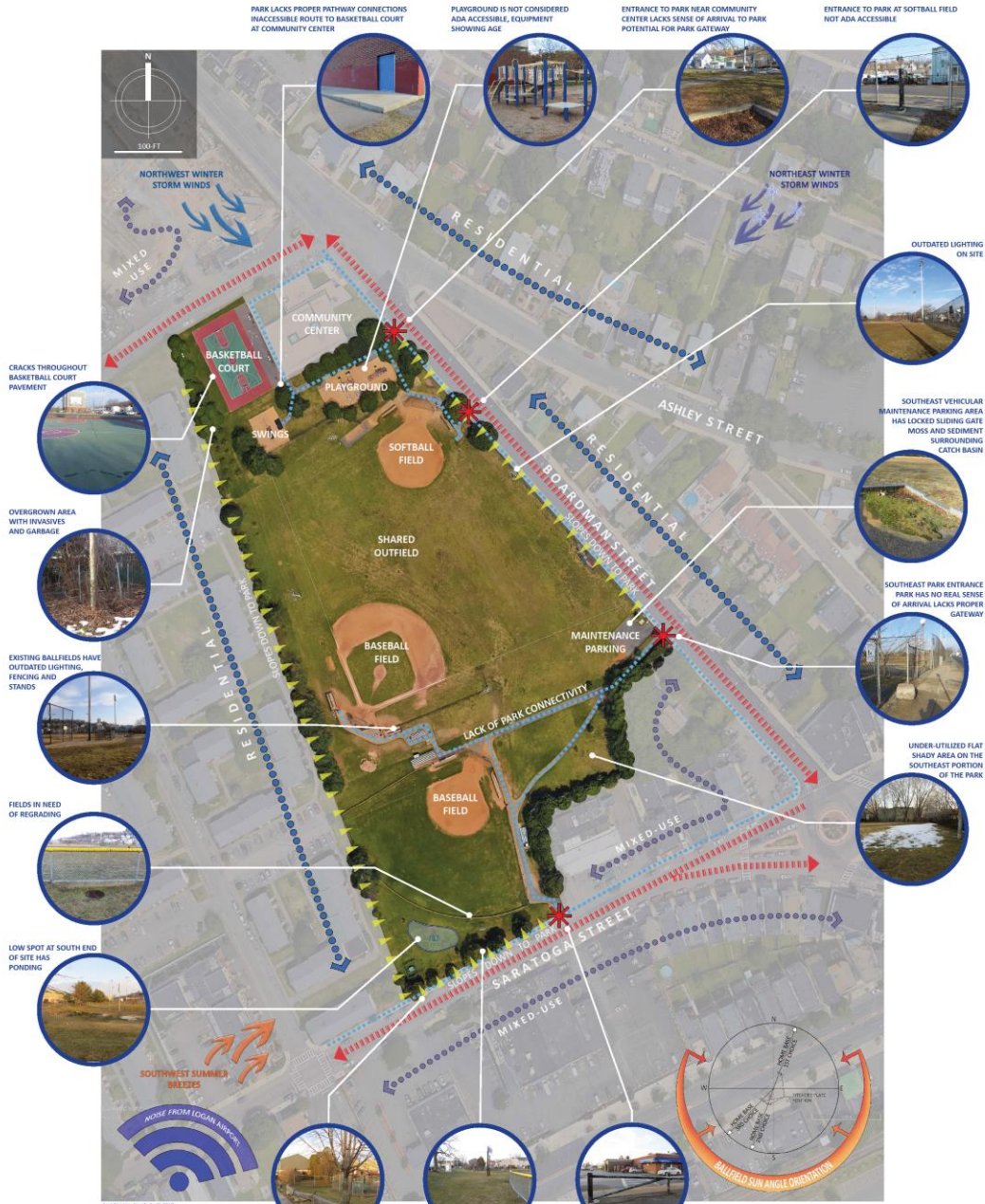
PARK TIMELINE



SITE ANALYSIS







Existing Conditions & Site Analysis Noyes Playground





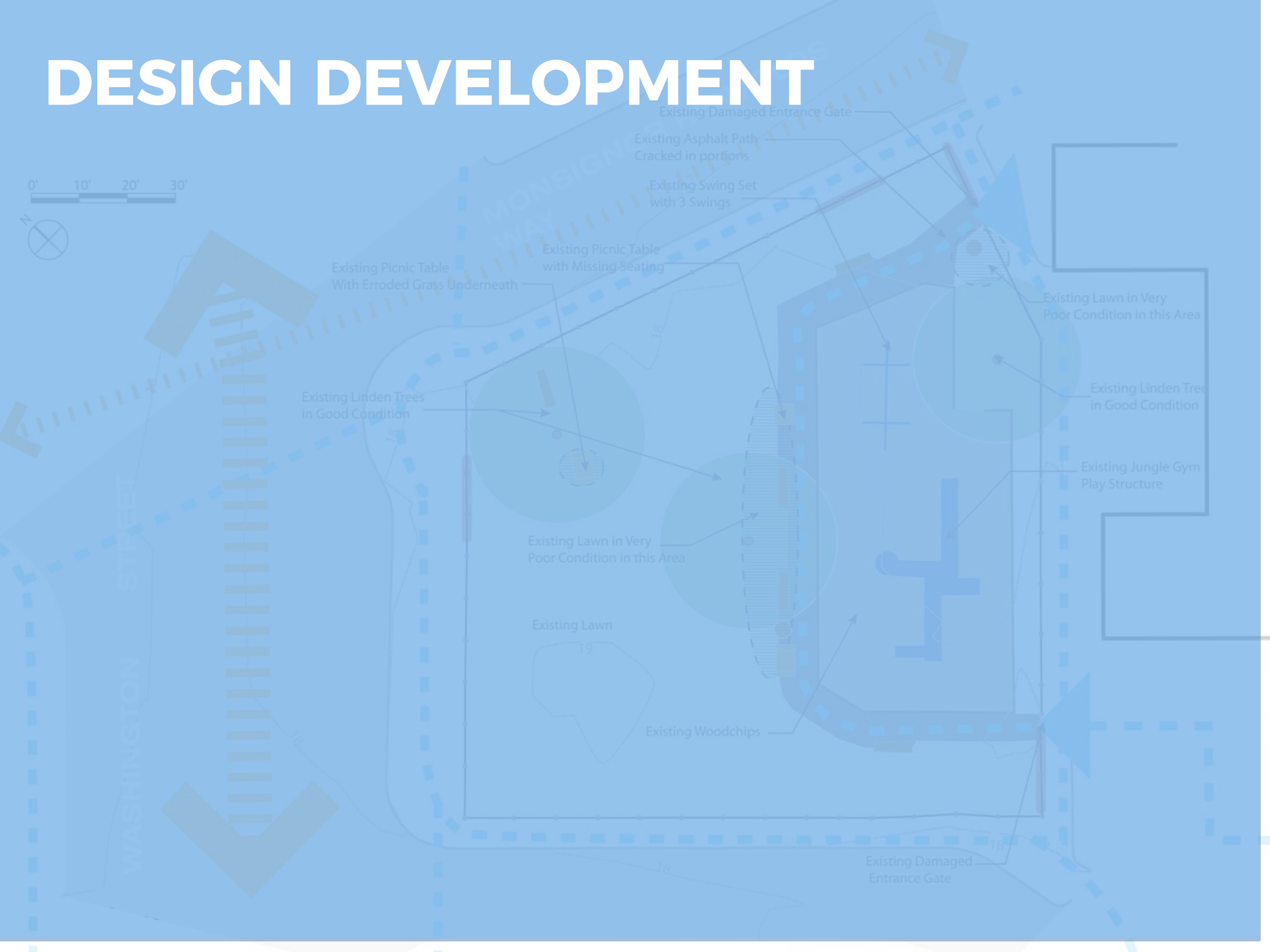
- IMPROVEMENTS:**
- PERIMETER WALKING PATH
 - EXERCISE STATIONS
 - NEW ENERGY EFFICIENT FIELD LIGHTING
 - RENOVATE FIELDS
 - RENOVATE DUGOUTS AND FENCING
 - NEW PLAYGROUND
 - IMPROVE UNIVERSAL ACCESS
 - PRESERVE EXISTING TREES
 - EXPAND USEABLE PARK SPACE
 - CREATE MULTI-FUNCTIONAL PARK SPACES
 - ENHANCE PARK VISIBILITY
 - IMPROVE PARK ACCESS
 - INCORPORATE SUSTAINABLE PRACTICES

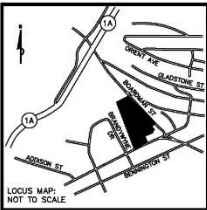


OPPORTUNITIES:

- _____
- _____
- _____
- _____
- _____
- _____
- _____
- _____
- _____
- _____
- _____
- _____
- _____
- _____
- _____
- _____
- _____
- _____
- _____
- _____
- _____

DESIGN DEVELOPMENT





BENCHMARK
X-CUT HYD BOLT
ELEV=17.11

N/E
LOGAN ACQUISITIONS CORPORATION
21873/74

N/E
BRANDYWINE VILLAGE COMPANY
8007/099



UNDERGROUND UTILITIES WERE COMPILED FROM AVAILABLE RECORD PLANS OF UTILITY COMPANIES AND PUBLIC AGENCIES AND ARE APPROXIMATE ONLY. BEFORE DESIGN AND CONSTRUCTION CALL "DIG SAFE" 1-888-344-7233. SOME DATA IS CONFLICTING AND CAN ONLY BE VERIFIED BY EXCAVATION.

- NOTES:
- ELEVATIONS SHOWN HEREON ARE BASED ON THE CITY OF BOSTON DATUM, AND WERE DETERMINED BY GPS OBSERVATIONS AND AN OPUS REDUCTION PERFORMED ON MARCH 29, 2017.
 - HORIZONTAL COORDINATES ARE BASED ON THE MASSACHUSETTS STATE PLANE COORDINATE SYSTEM, HANLON ZONE (NAD 83), AND WERE DETERMINED BY GPS OBSERVATIONS AND AN OPUS REDUCTION ON MARCH 29, 2017.
 - THE PARCEL SHOWN HEREON IS LOCATED IN FLOOD ZONE AE, AS SHOWN ON THE FLOOD INSURANCE RATE MAP, SUFFOLK COUNTY, MASSACHUSETTS, MAP NUMBER 220502003A, MAP LAST REVISED: MARCH 16, 2016. THE BASE FLOOD ELEVATIONS PROVIDED ON SAID MAP ARE REPORTED ON THE NAVD83 DATUM. TO CONVERT CITY OF BOSTON ELEVATIONS TO NAVD83, SUBTRACT 6.45 FEET FROM THE ELEVATIONS SHOWN HEREON. (I.E. ELEV=18.45 SHOWN HEREON IS EQUAL TO ELEV=10.00 ON NAVD83)
 - THIS PLAN AND THE SURVEY ON WHICH IT WAS BASED WERE PREPARED WITHOUT THE BENEFIT OF A TITLE REPORT AND ARE SUBJECT TO THE FINDINGS SUCH A REPORT MAY DISCLOSE.
 - CONTRACTED LIMIT OF SURVEY WAS TO THE NEAR EDGE OF CURB ON BOARDMAN AND SARATOGA STREETS. LIMITED INFORMATION HAS BEEN SHOWN WITHIN THE ROADWAYS AND MAY NOT REPRESENT ALL INFRASTRUCTURE WITHIN SAID STREETS.

- LEGEND:
- BIT CONC BITUMINOUS CONCRETE
 - CB/CH CONCRETE BOUND / DRILL HOLE
 - CC/CDH CONCRETE CURB / DRILL HOLE
 - CLF CHAIN LINK FENCE
 - CONC CONCRETE
 - CS COMBINED SEWER
 - DWH DRAIN MANHOLE
 - GC GRANITE CURB
 - GAS GAS LINE
 - HYD HYDRANT
 - INVERT INVERT
 - LP LIGHT POLE
 - MEI MET
 - OH OVERHANG
 - POST POST
 - PB PULL BOX
 - RCM REINFORCED CONCRETE PIPE
 - SGN SIGN
 - SB/DBH STONE BOUND / DRILL HOLE
 - SMH SEWER MANHOLE
 - TL TRAFFIC CONTROL BOX
 - TL TRAFFIC LIGHT
 - TRANS TRANSFORMER
 - UP UTILITY POLE
 - WG WATER GATE
 - WMH WATER MANHOLE



Prepared By: **Precision Land Surveying, Inc.**
32 Turnpike Road
Southborough, Massachusetts 01772
TEL: (508) 460-1789 FAX: (508) 970-0996
4464T1.DWG



No.	Date	Revision

Approved By: _____ Date: _____

Project Name:

Noyes Playground

SPIC Title No.	PROJECT NO.
Date	04062017
Scale	1" = 20'
Drawn	JLT
Checked	MAP

Sheet Name:

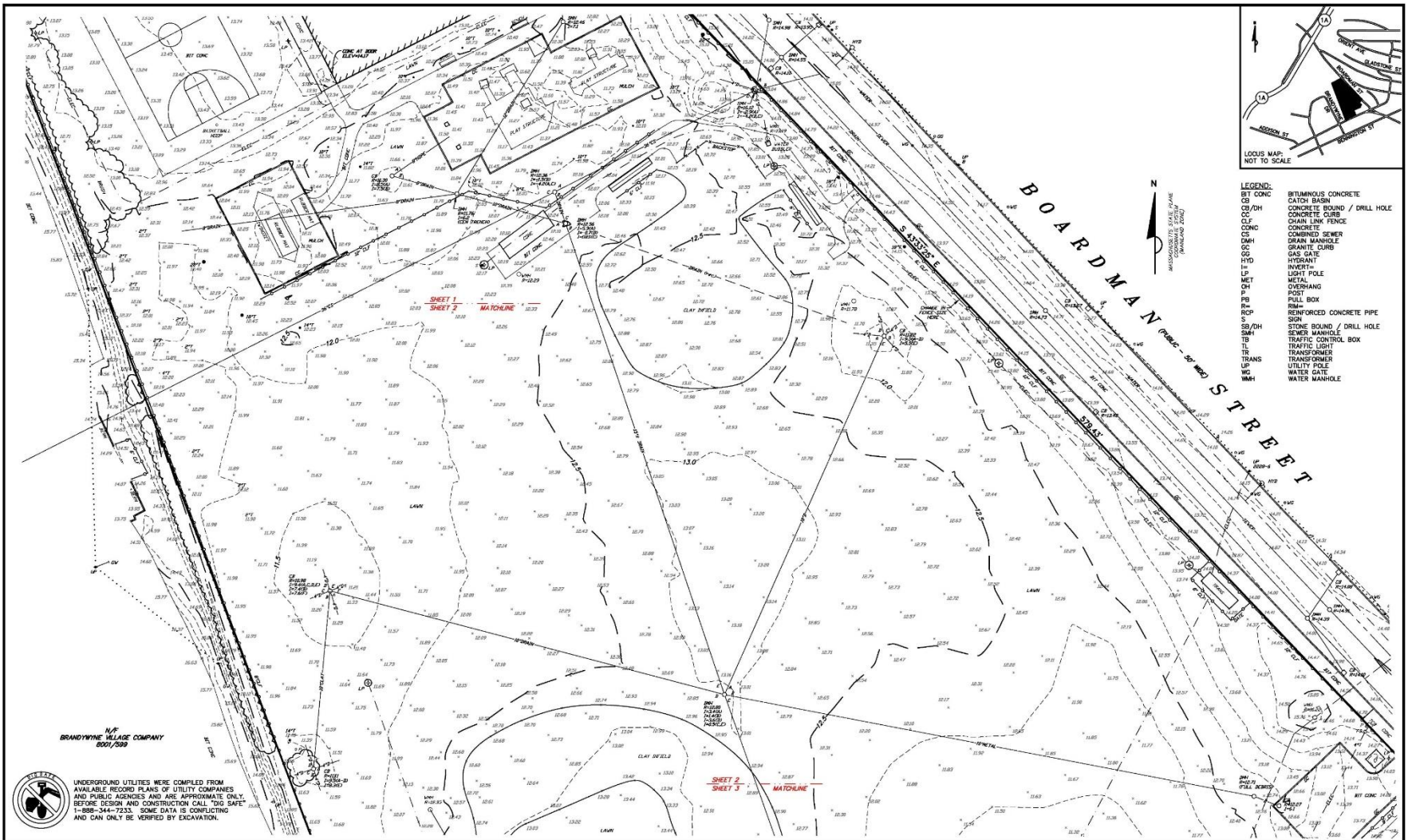
Existing Conditions

Section:

1 of 5

New Project Survey





Prepared By:
Precision Land Surveying, Inc.
 32 Turnpike Road
 Southborough, Massachusetts 01772
 TEL No. (508) 460-1789 FAX No. (508) 470-0096
 446417P.DWG

No.	Date	Revision

Approved By: _____ Date: _____

Project Name:
Noyes Playground

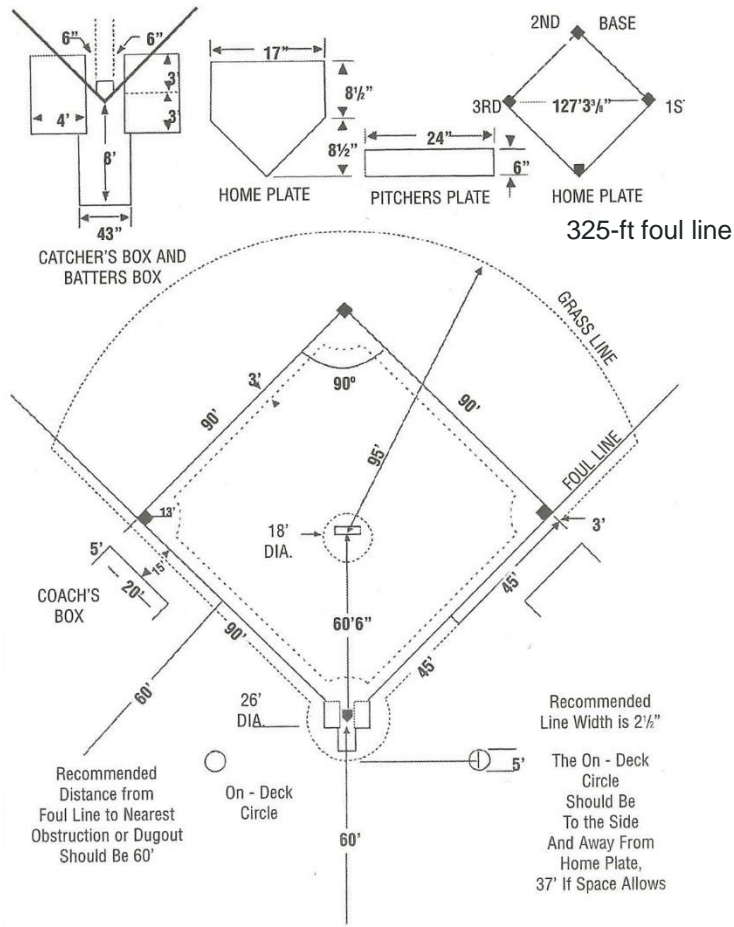
SHPD Project No.	PROJECT NO.
Date	04/05/2017
Scale	1" = 20'
Drawn	DLT
Checked	MAP

Sheet Name:
Existing Conditions

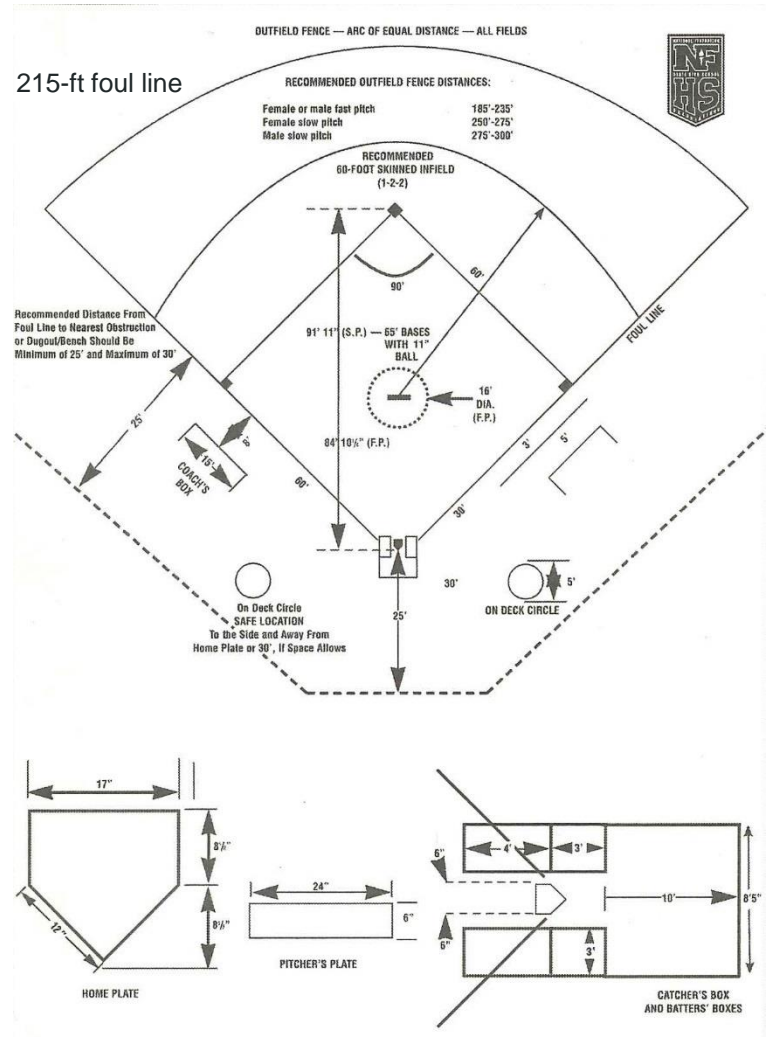
Sheet:
2 of 5

New Project Survey





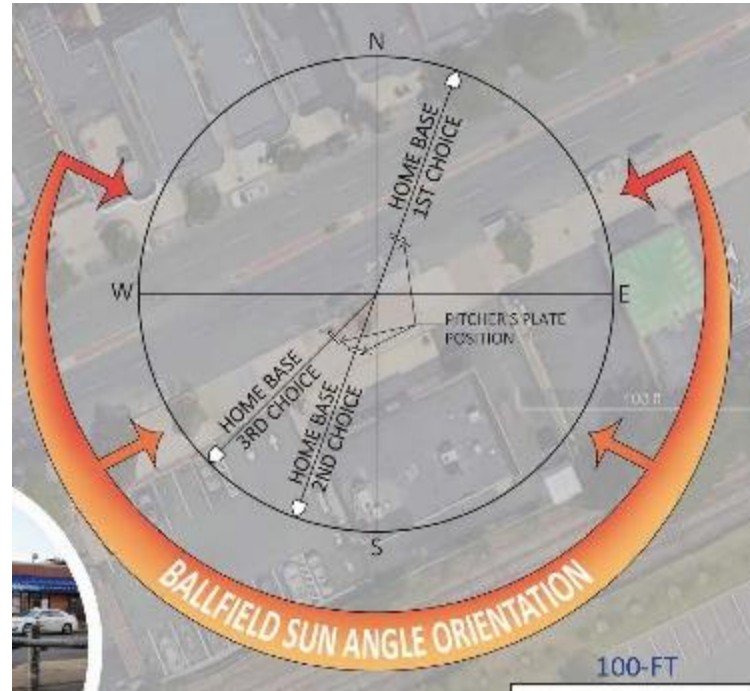
Baseball



Softball

Design Standards





Design Standards

Small-Sided Games Chart

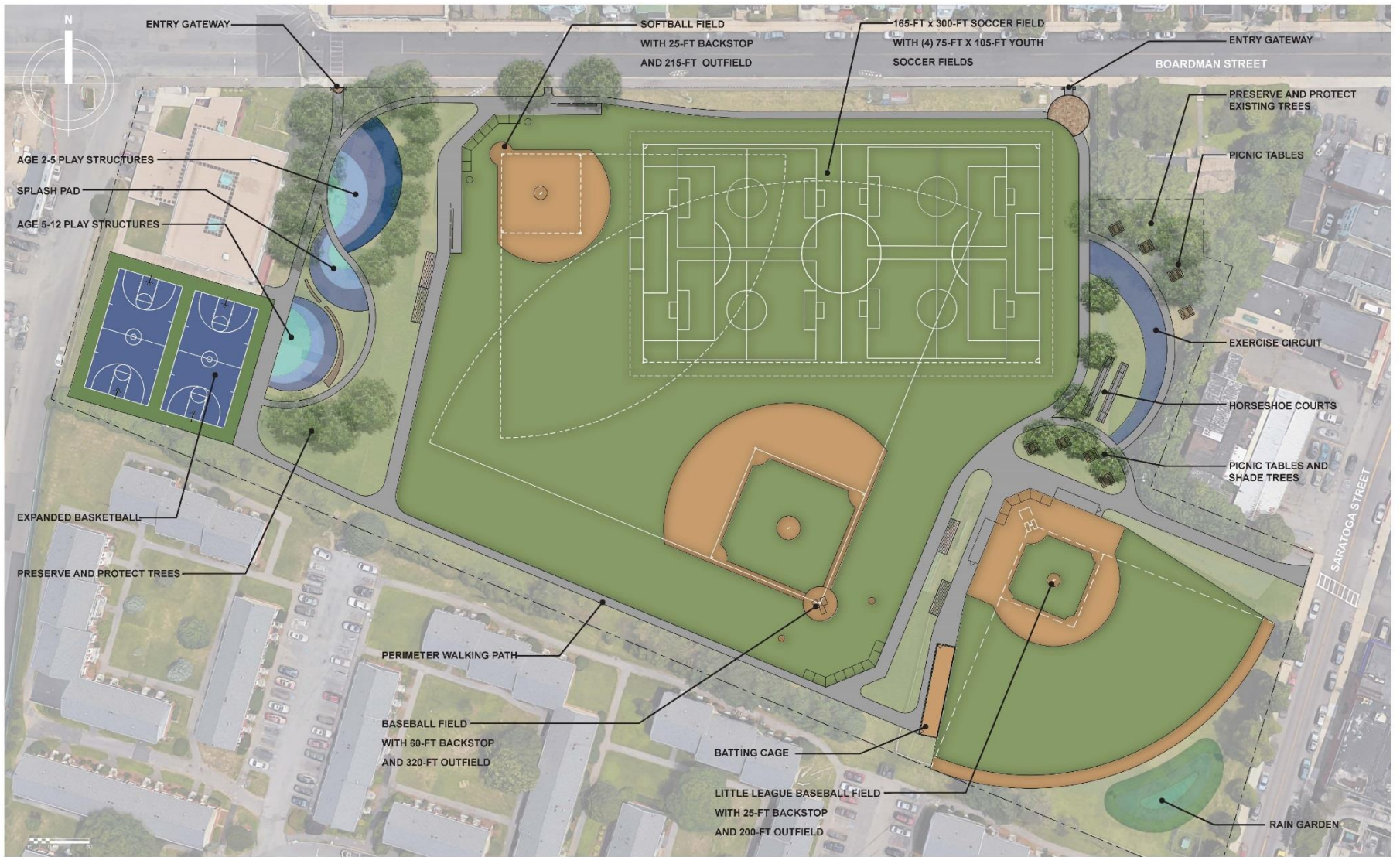
	U6 6 years old and younger	U7 7 years old and younger	U8 8 years old and younger	U9 9 years old and younger	U10 10 years old and younger	U11 11 years old and younger	U12 12 years old and younger
Field Size (yards)	Length 25-35 Width 15-25	Length 25-35 Width 15-25	Length 25-35 Width 15-25	Length 55-65 Width 35-45	Length 55-65 Width 35-45	Length 70-80 Width 45-55	Length 70-80 Width 45-55
Maximum Goal Size (feet)	Height 4 Width 6	Height 4 Width 6	Height 4 Width 6	Height 6.5 Width 18.5	Height 6.5 Width 18.5	Height 7 Width 21	Height 7 Width 21
Ball Size	3	3	3	4	4	4	4
Players	4v4 No GK	4v4 No GK	4v4 No GK	7v7	7v7	9v9	9v9
Game Time (minutes)	4x10	4x10	4x10	2x25	2x25	2x30	2x30
Offside	No	No	No	Yes	Yes	Yes	Yes

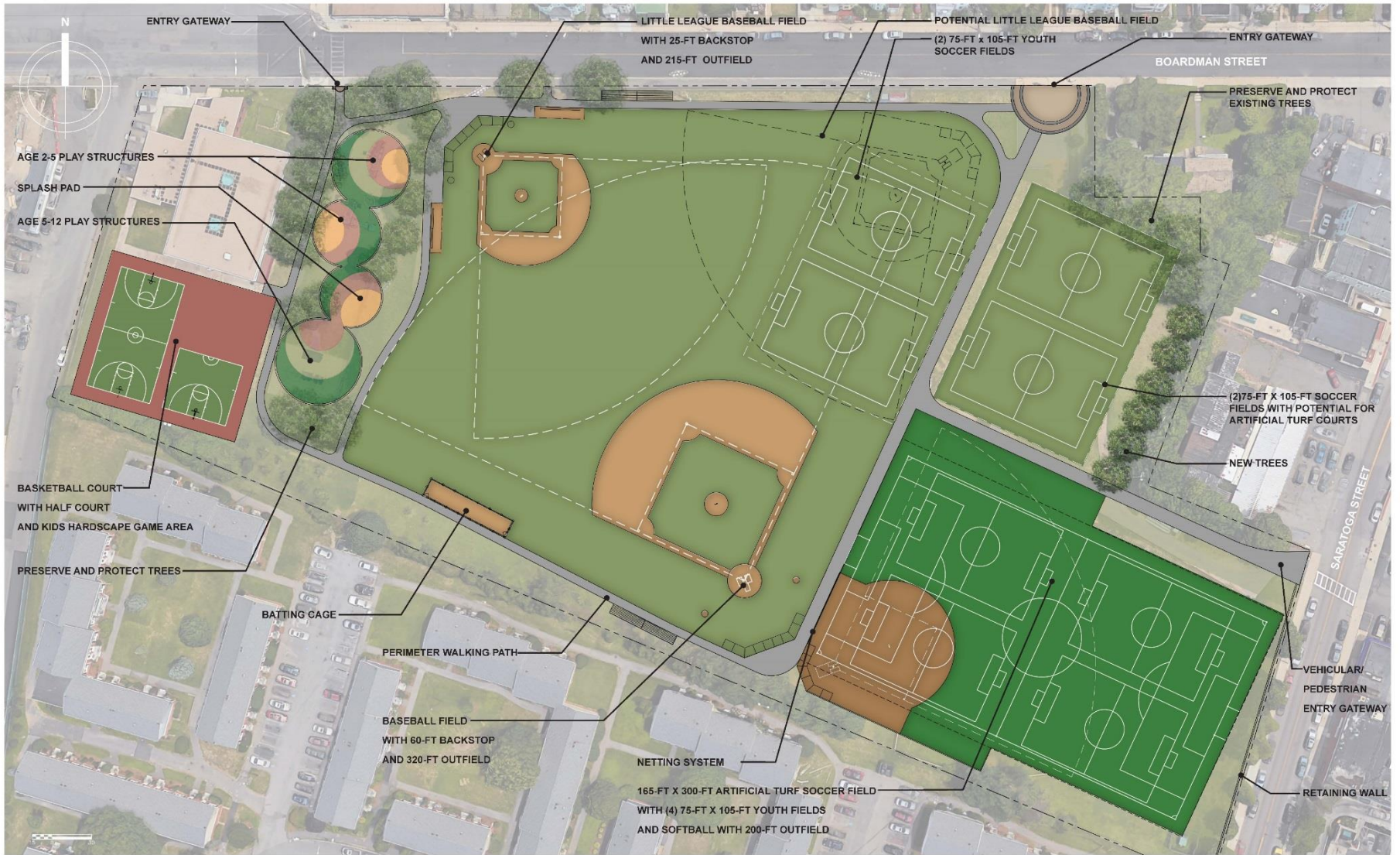
Soccer

NFHS Standard
165 x 300 to
240 x 360

Design Standards

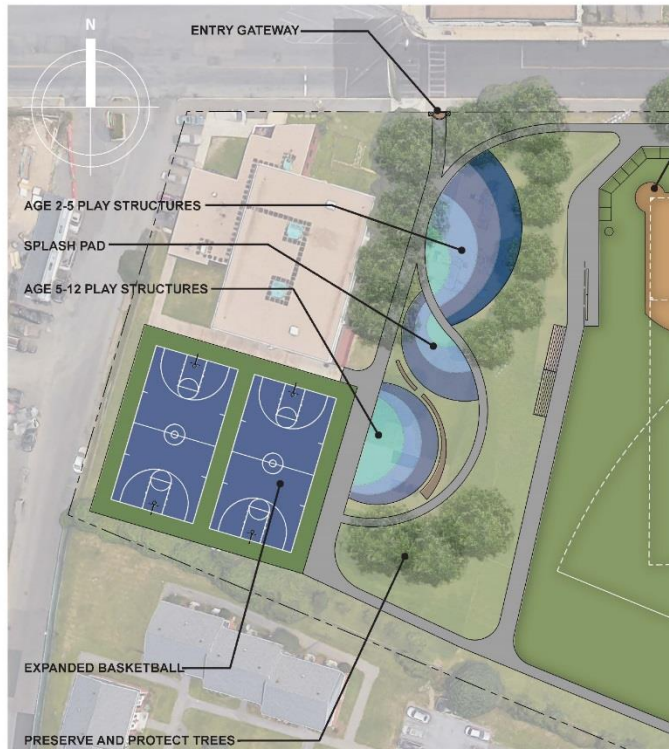




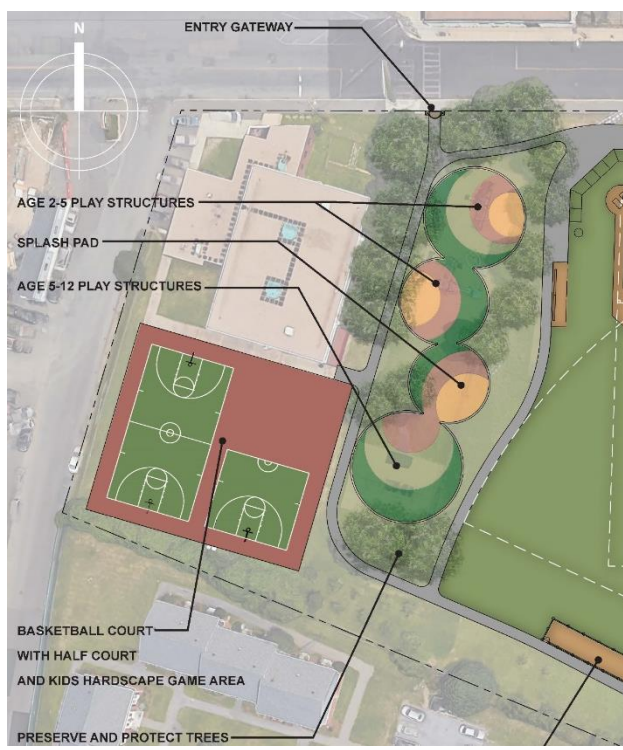




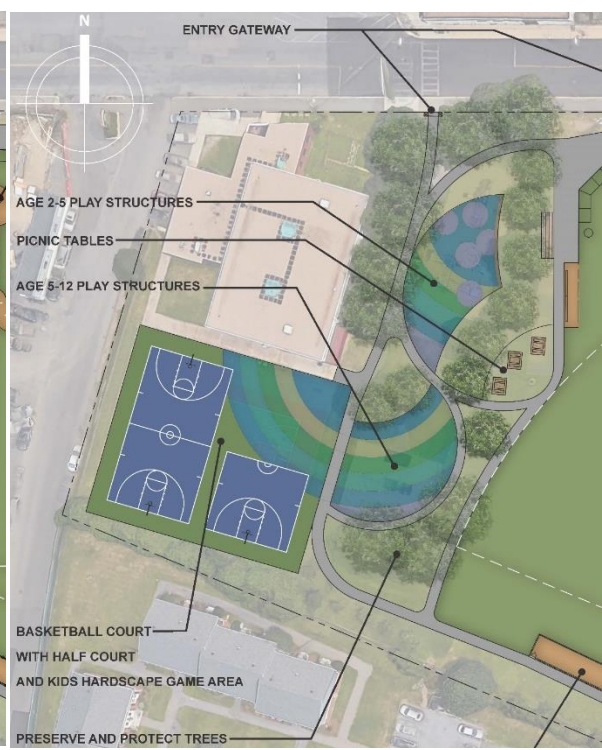




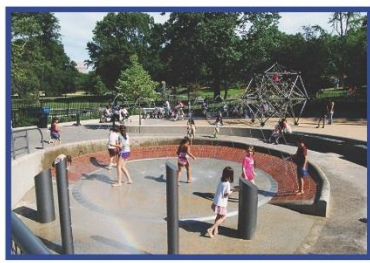
Option A



Option B



Option C



Playground Improvements: Inspirational Images
Noyes Playground





LISTENING & DISCUSSION

Help us build great parks.
Let us know what matters to you.



THANK YOU!

Next Meeting May 23, 2017 BYCF Pino at 6:30pm

Nathan Frazee, Project Manager
nathan.frazee@boston.gov or 617-961-3167

Marchelle Jacques-Yarde, Outreach Coordinator, External Affairs
marchelle.jacques-yarde@boston.gov or 617-961-3006

Claudia Correa, Office of Neighborhood Services
claudia.correa@boston.gov or 617-635-2681

For questions, maintenance requests or concerns
regarding any of our parks contact 311

BOS:
311



March 21, 2017
Boston Parks and Recreation

