


Improvements to
NOYES PLAYGROUND

Noyes Playground 



AGENDA

1

PROJECT TEAM INTRODUCTION

2

PROJECT OVERVIEW

3

PRESENTATION

4

LISTENING & DISCUSSION

5

CLOSING REMARKS & NEXT STEPS

PROJECT TEAM

Nathan Frazee

Project Manager

Nathan.frazee@boston.gov or 617-961-3167

Marchelle Jacques-Yarde

Outreach Coordinator, External Affairs

marchelle.jacques-yarde@boston.gov or 617-961-3006

Scott Landgren

Principal, CDM Smith

Danielle Mellett

Landscape Architect, CDM Smith

Steve Fusco

Landscape Architect, CDM Smith

Claudia Correa

Office of Neighborhood Services

Claudia.Correa@boston.gov or 617-635-2681





BCYF Martin Pino
Community Center

Basketball

Playground

Softball

Baseball

Noyes Playground

Little League

BCYF Martin Pino
Community Center

Ashley St

Boardman St

Ashley St

Leyden St

St Joseph &
Lazarus Church

East Boston YMCA

Boardman St

Ford St

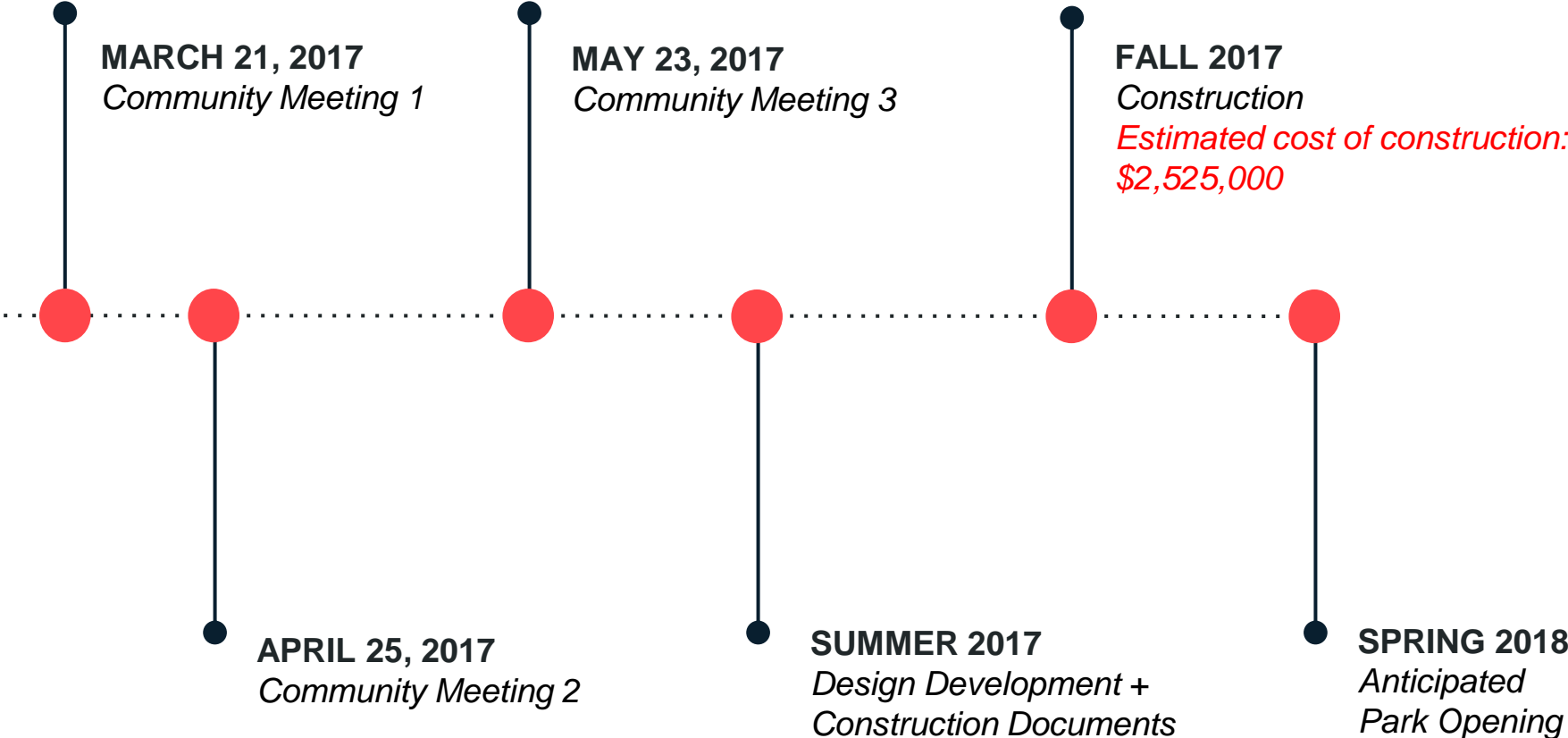
Ruggiero Family
Memorial Home

Saratoga St

Burger King

Brandyw

PROJECT SCHEDULE & FUNDING





City of Boston
Initiatives

Safety Guidelines+
Environmental
Regulations

**PARK
DESIGN**

Parks + Recreation
Goals

Community
Input

CITY OF BOSTON INITIATIVES

- **Inclusion**
- **Shade**
- **Access to Parks**
- **Drinking / Bottle Filling Stations**
- **Water Play**
- **Climate Resiliency**

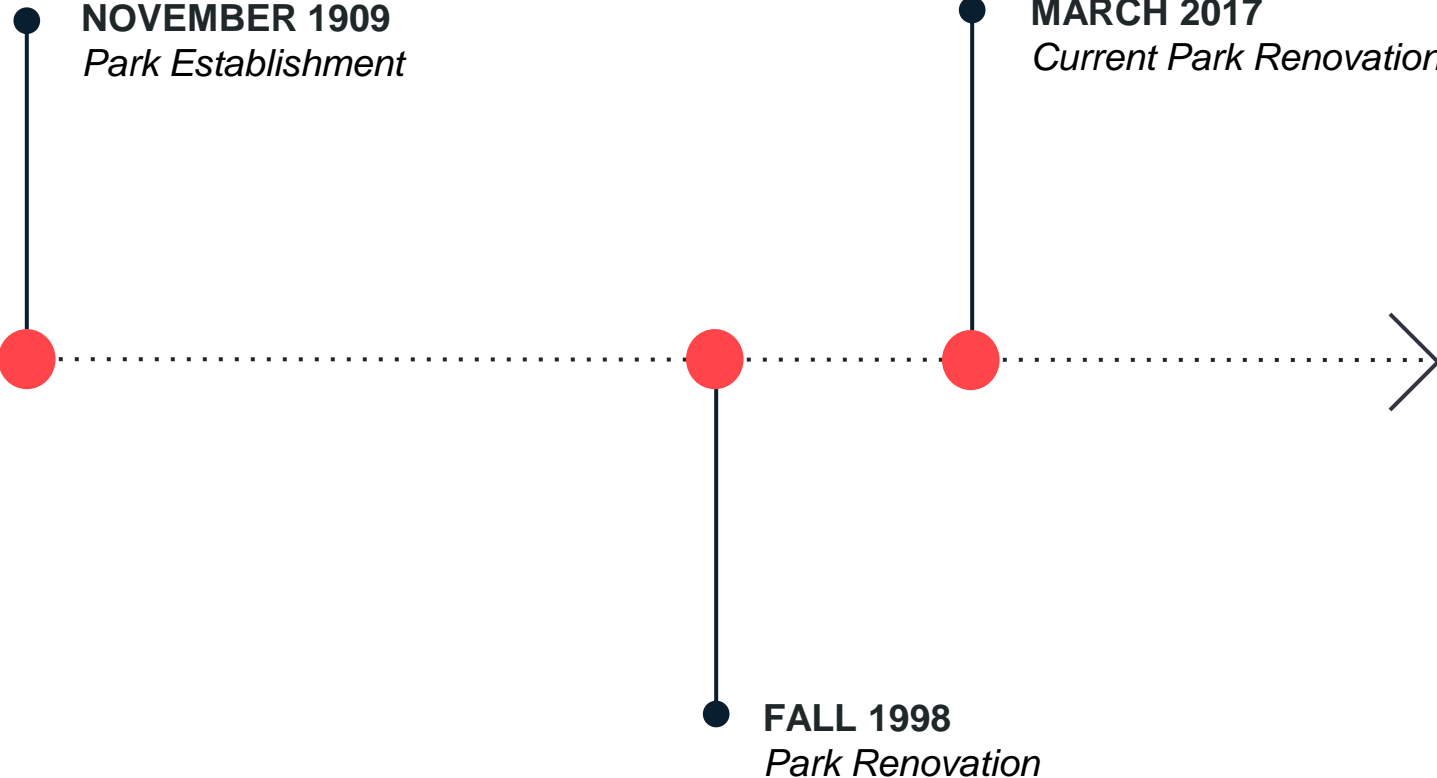


PARK & RECREATION GOALS

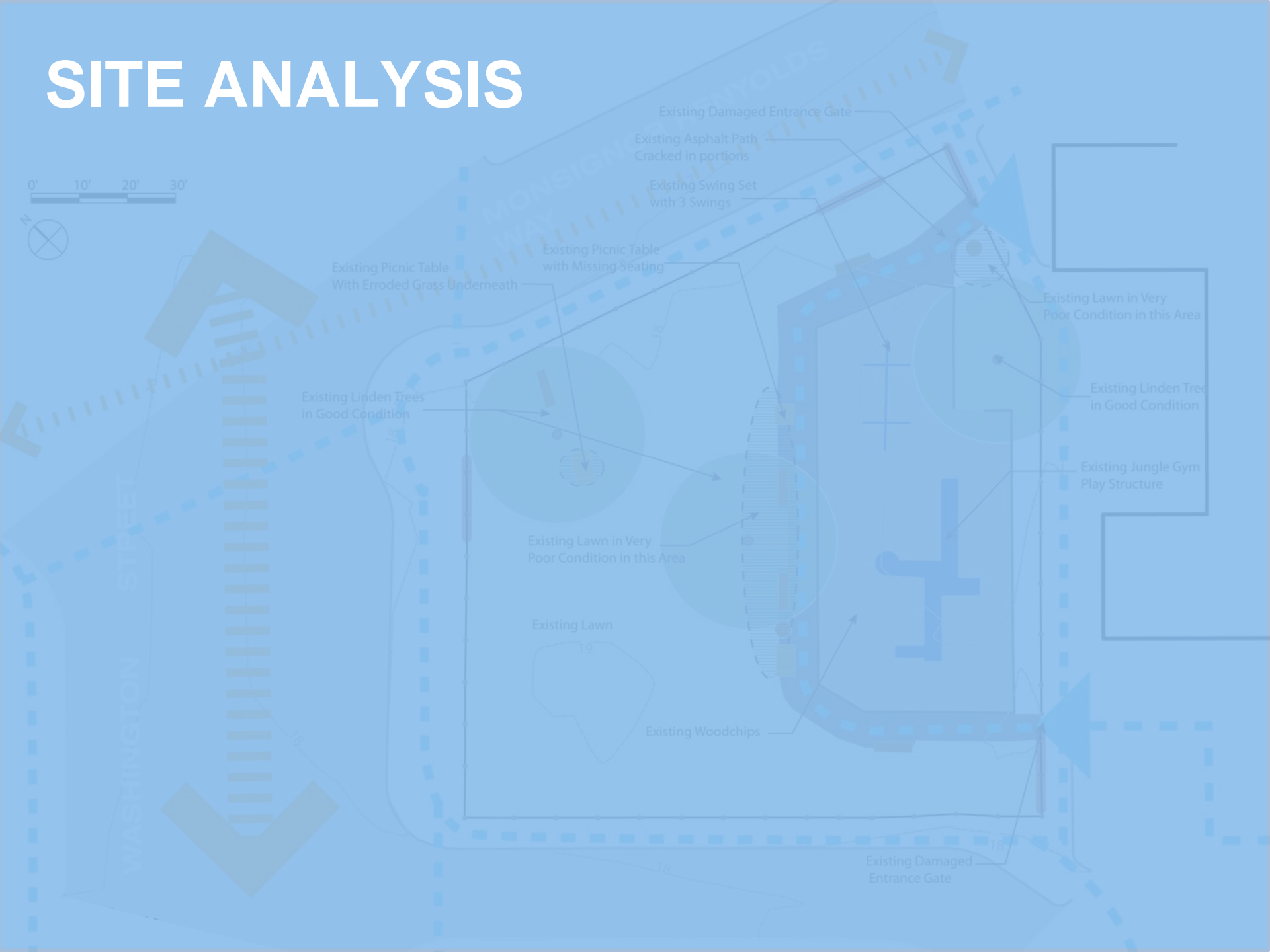
- **Preserve and protect existing trees**
- **Expand usable park area**
- **Improve universal access**
- **Enhance park visibility**
- **Improve access to parks**
- **Design flexible, multi-functional park spaces**

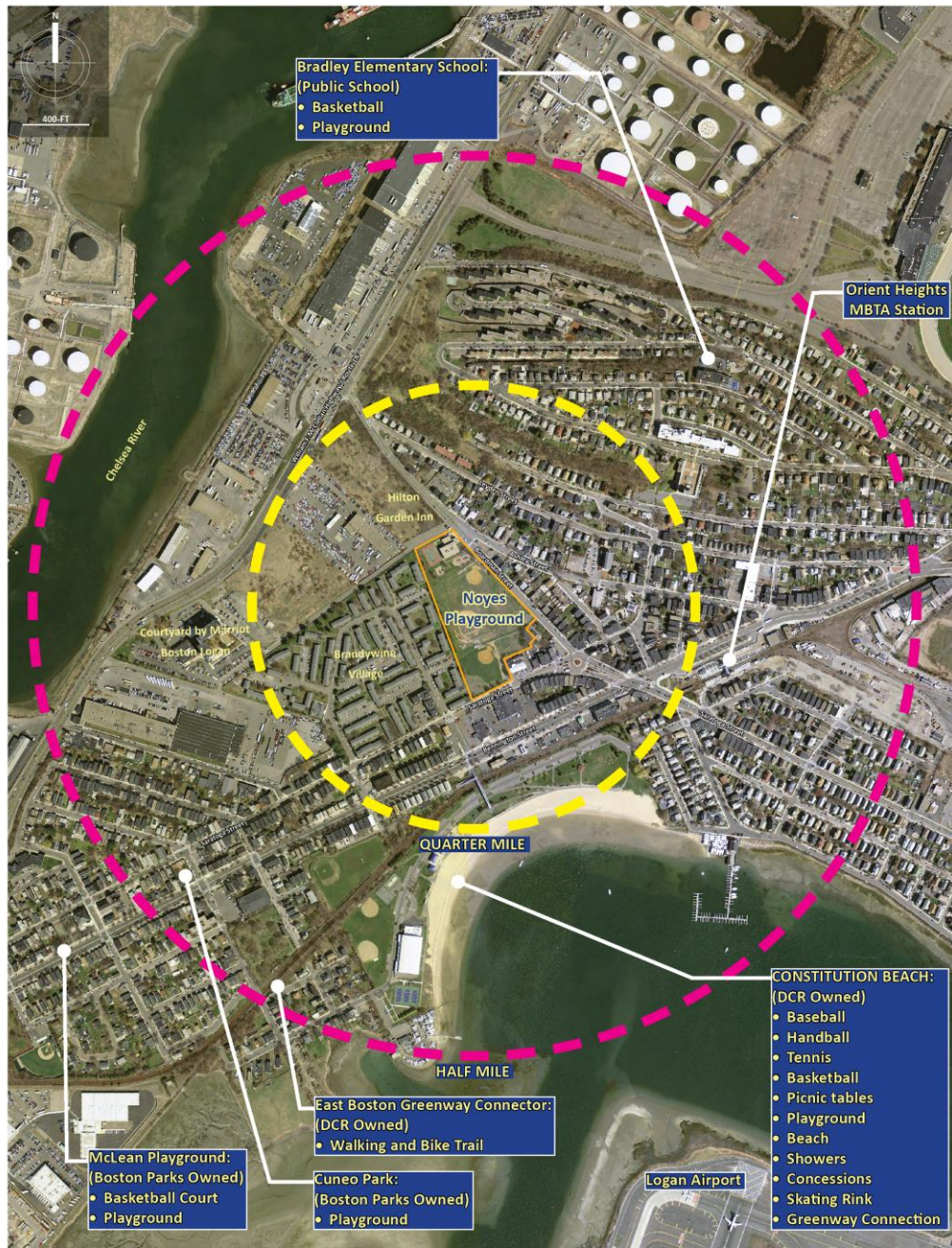


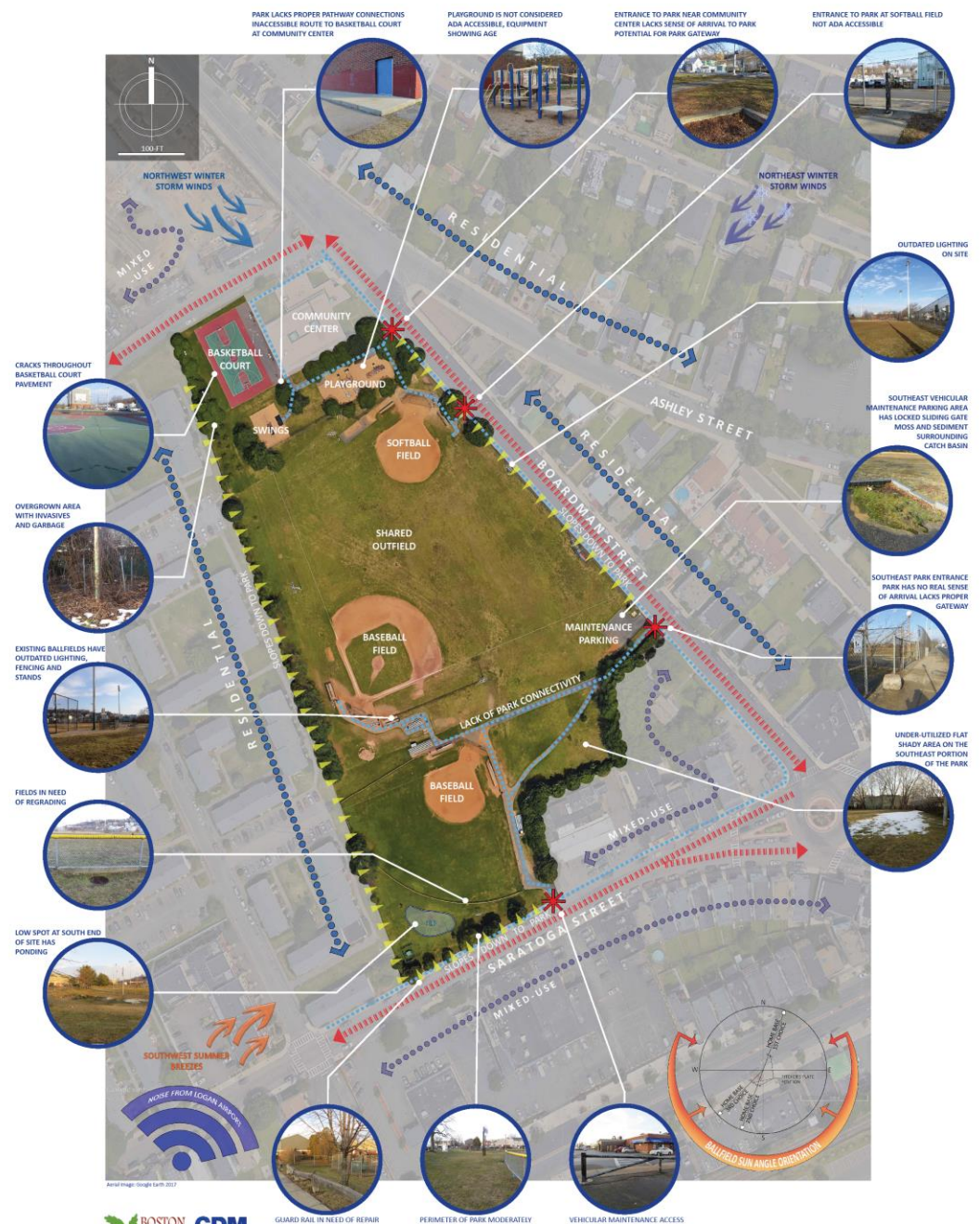
PARK TIMELINE

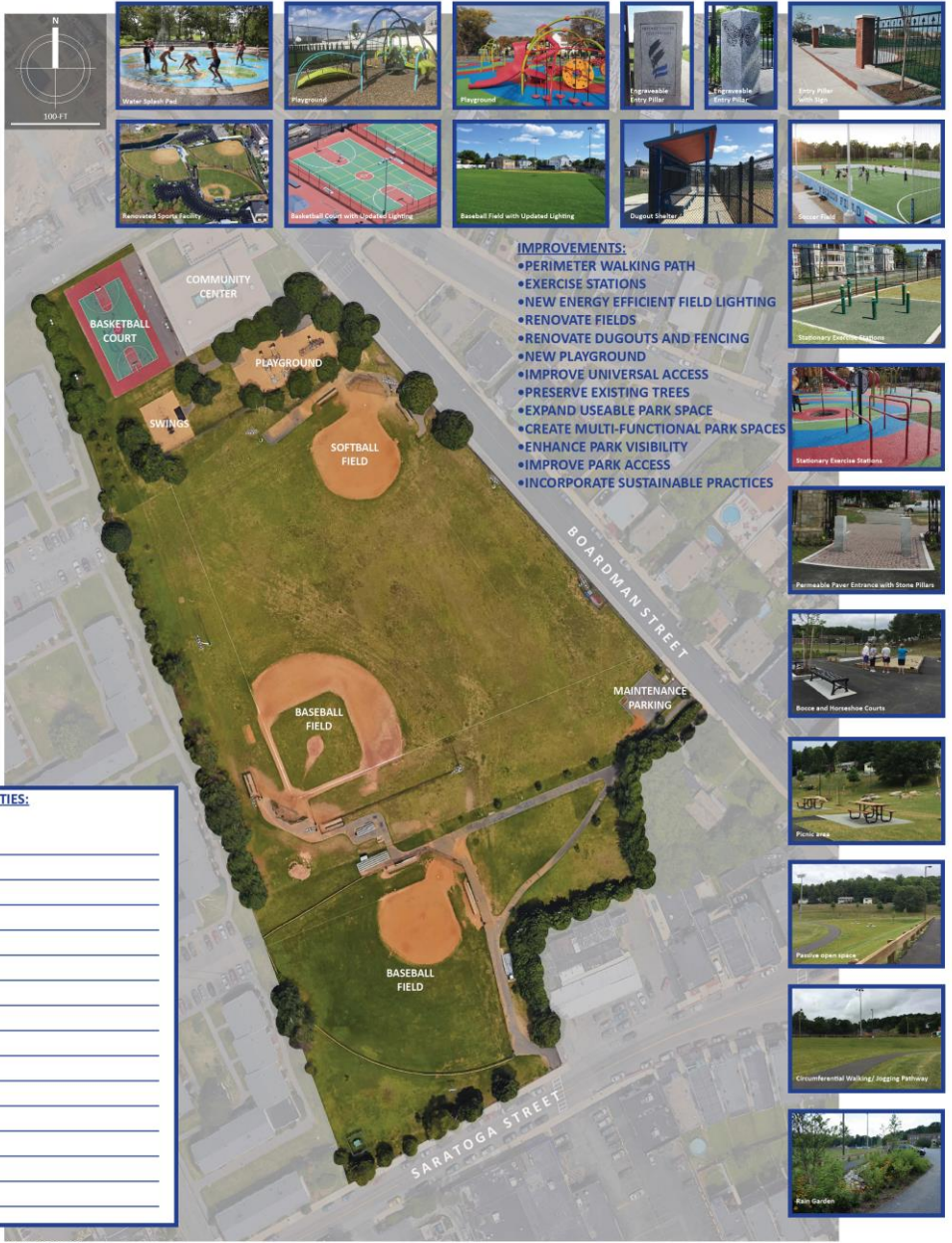


SITE ANALYSIS









IMPROVEMENTS:

- PERIMETER WALKING PATH
- EXERCISE STATIONS
- NEW ENERGY EFFICIENT FIELD LIGHTING
- RENOVATE FIELDS
- RENOVATE DUGOUTS AND FENCING
- NEW PLAYGROUND
- IMPROVE UNIVERSAL ACCESS
- PRESERVE EXISTING TREES
- EXPAND USEABLE PARK SPACE
- CREATE MULTI-FUNCTIONAL PARK SPACES
- ENHANCE PARK VISIBILITY
- IMPROVE PARK ACCESS
- INCORPORATE SUSTAINABLE PRACTICES

OPPORTUNITIES:

-
-
-
-
-
-
-
-
-
-
-
-
-
-
-
-





LISTENING & DISCUSSION

Help us build great parks.
Let us know what matters to you.



THANK YOU!

Next Meeting April 25, 2017 BYCF Pino at 6:30pm

Nathan Frazee, Project Manager
nathan.frazee@boston.gov or 617-961-3167

Marchelle Jacques-Yarde, Outreach Coordinator, External Affairs
marchelle.jacques-yarde@boston.gov or 617-961-3006

Claudia Correa, Office of Neighborhood Services
claudia.correa@boston.gov or 617-635-2681

For questions, maintenance requests or concerns
regarding any of our parks contact 311

