

Improvements to

MT. HOPE STREET PARCEL

464 HYDE PARK AVENUE



March 28, 2017
Boston Parks and Recreation



AGENDA

1

PROJECT TEAM INTRODUCTION

2

PROJECT OVERVIEW

3

PRESENTATION

4

LISTENING & DISCUSSION

5

CLOSING REMARKS & NEXT STEPS

PROJECT TEAM

Cathy Baker-Eclipse

Project Manager, Design and Construction

cathy.baker-eclipse@boston.gov or 617-961-3058

Marchelle Jacques-Yarde

Outreach Coordinator, External Affairs

marchelle.jacques-yarde@boston.gov or 617-961-3006

Daniel Murphy

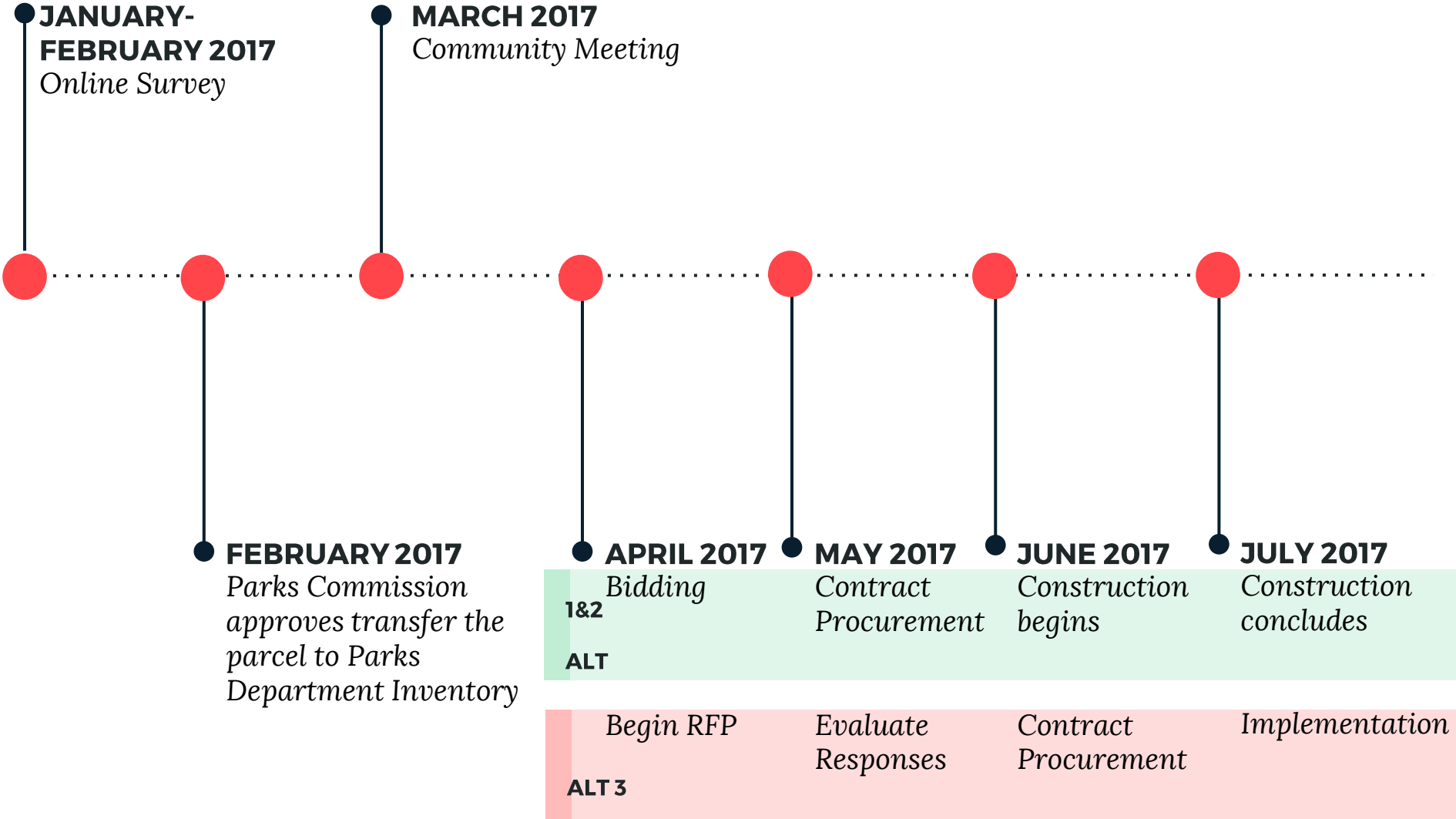
Office of Neighborhood Services

daniel.m.murphy@boston.gov or 617-635-3307



PROJECT SCHEDULE & FUNDING

FUNDING: \$50,000



PARK & RECREATION GOALS

- **Preserve and Protect/Existing Trees**
- **Expand Usable Park Area**
- **Improve Universal Access**
- **Enhance Park Visibility**
- **Improve Park Access**
- **Design Flexible, Multi-functional park spaces**





SURVEY RESPONSES

I wish this parcel could be:

- “A green gathering space for all local citizens, of all ages and backgrounds, to enjoy and interact with the outdoors.”
 - “A playground or play space for toddlers – elementary kids.”
 - “Beautiful, imaginative, fun, relaxing”
 - “An accessible, safe, and clean space for community residents young and old.”
 - “turned into some maintained open green space.”
-
- 43/106 suggested playground/tot lot (40%)
 - 29/106 suggested passive space (27%)
 - 23/106 desired benches or seating (22%)
 - 21/106 suggested dog space (20%)
 - 15/106 suggested community garden (14%)

Other suggestions:

- Flowering/fragrant plants
- Gazebo
- Open Air Market
- Skatepark
- Youth Center
- Parking Lot
- Passive Water Feature



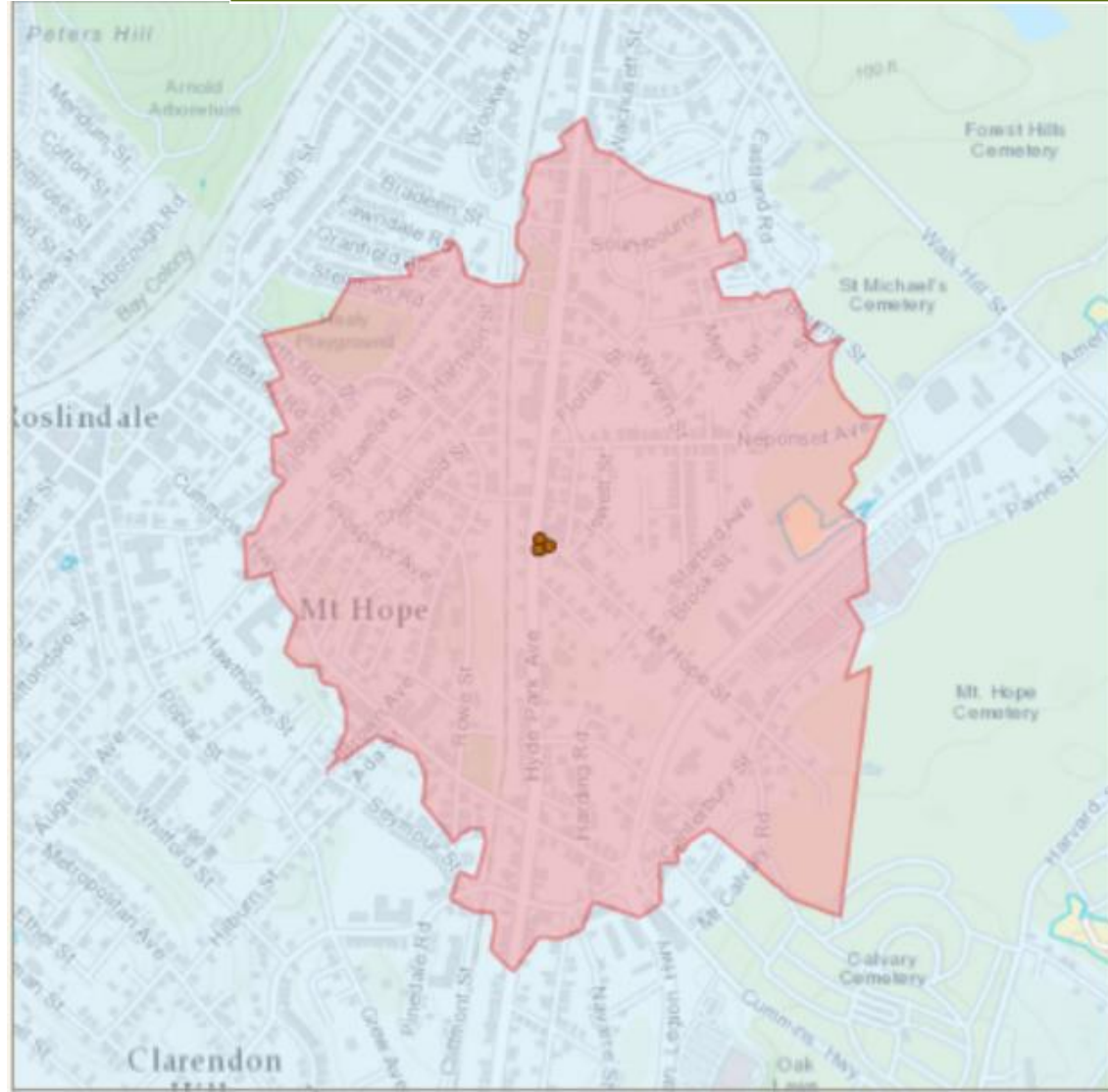
SITE ANALYSIS



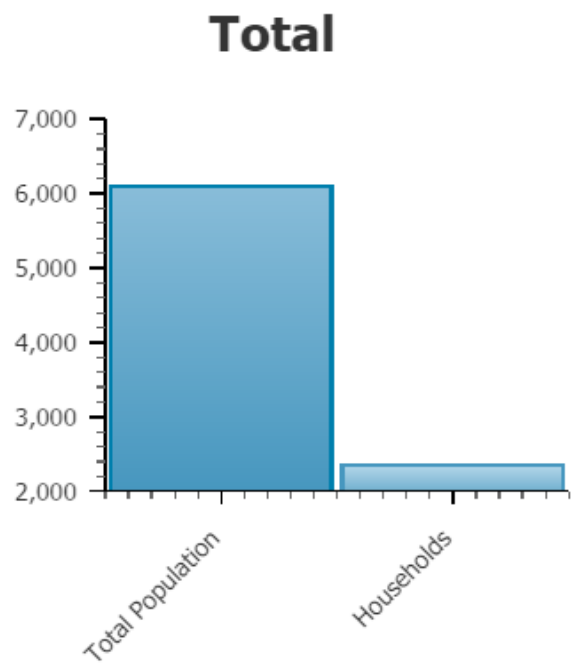
SERVICE AREA

BASED ON TRUST FOR PUBLIC LAND
PARKEVALUATOR®
(10 MIN WALK/½ MILE)

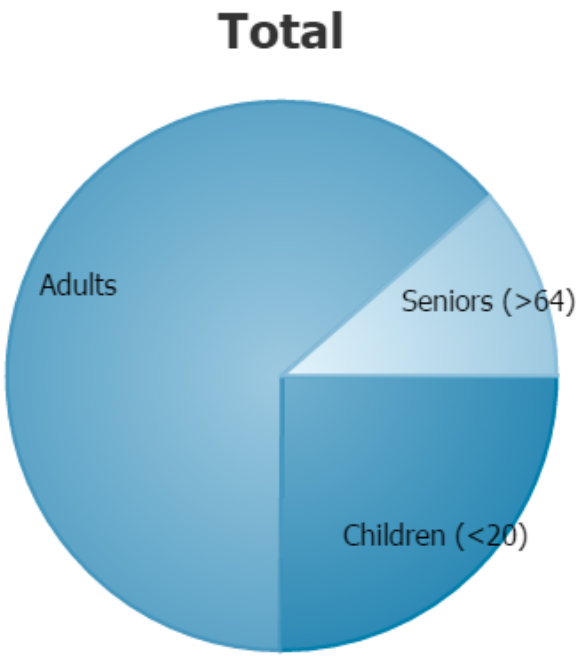
Statistic	Value
Project Count	1
Access Point Count	3
Project Acres	0.091
Total Service Area Acres	299.492
New Service Area Acres	1.14



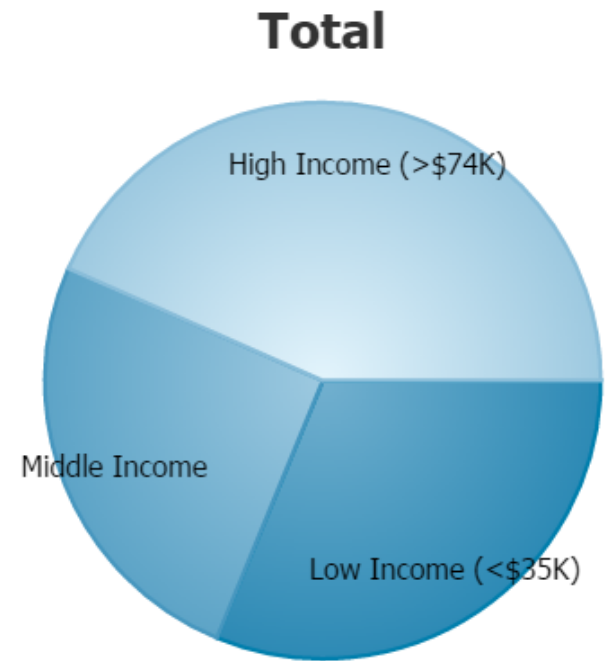
Demographic	Served	
	Total	New
Total Population	6,090	14
Households	2,349	5



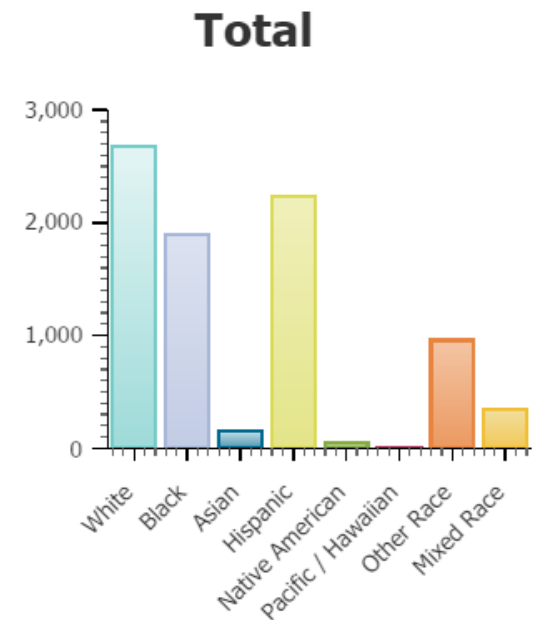
Demographic	People Served	
	Total	New
Children (<20)	1,530	4
Adults	3,870	9
Seniors (>64)	692	1



Demographic	Households Served	
	Total	New
Low Income (<\$35K)	733	1
Middle Income	596	1
High Income (>\$74K)	1,019	2

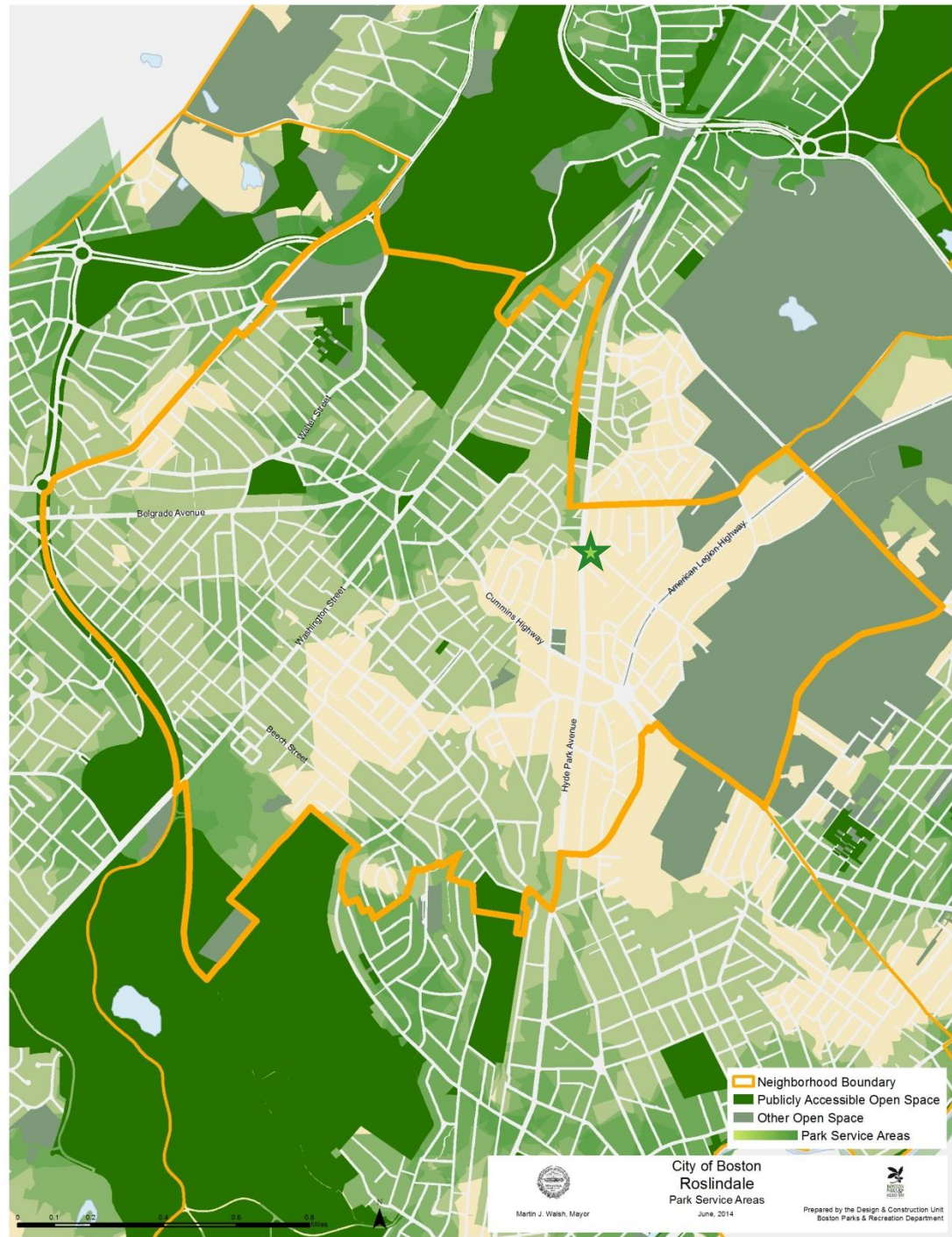


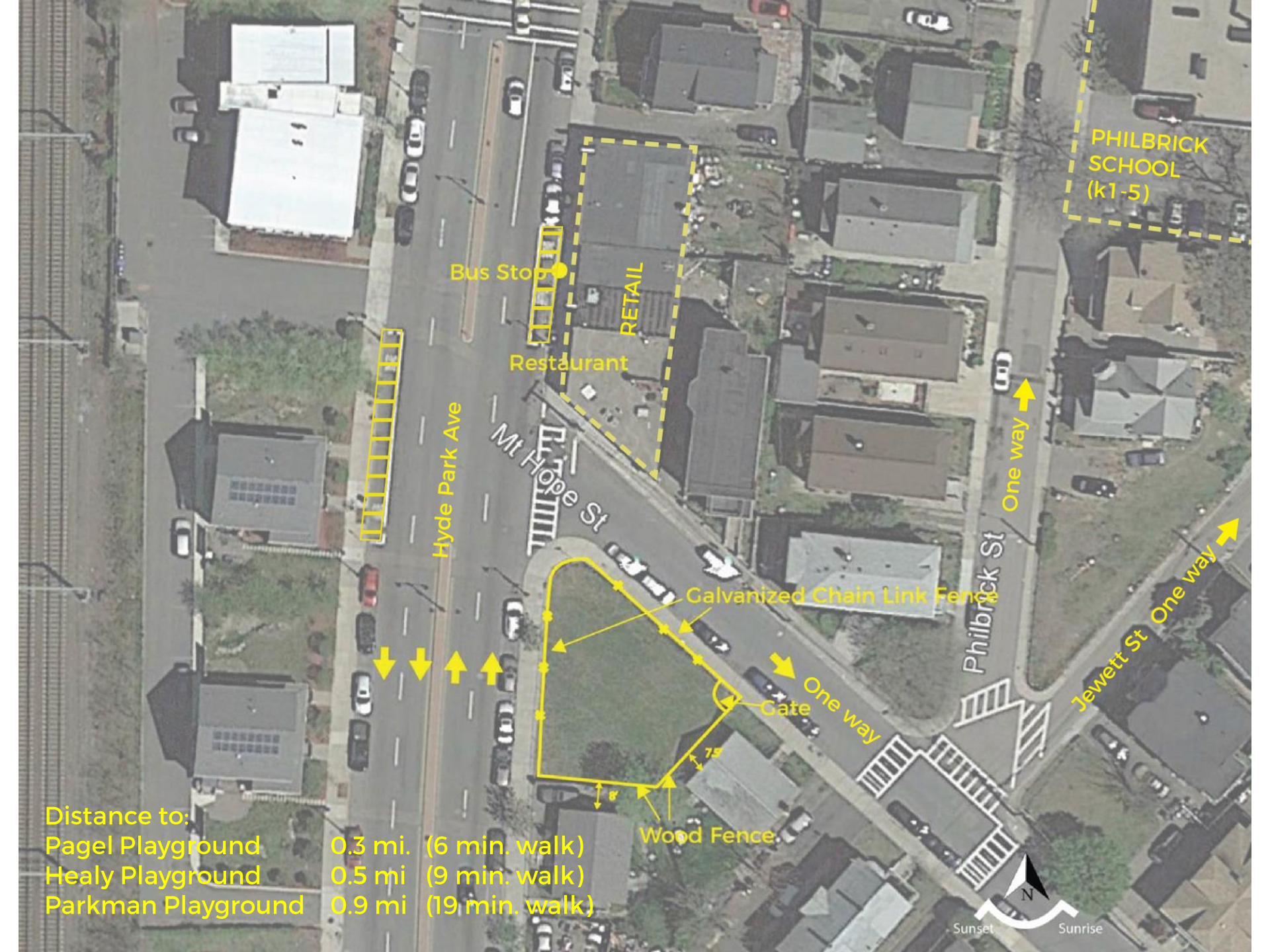
Demographic	People Served	
	Total	New
White	2,676	5
Black	1,896	5
Asian	157	-
Hispanic	2,232	6
Native American	53	-
Pacific / Hawaiian	3	-
Other Race	956	3
Mixed Race	348	1



PARK SERVICE AREAS

FROM 2015-2021 OPEN SPACE PLAN





PHILBRICK
SCHOOL
(k1-5)

Bus Stop

RETAIL

Restaurant

Hyde Park Ave

Mt Hope St

One way

Philbrick St

Jewett St One way

Galvanized Chain Link Fence

Gate

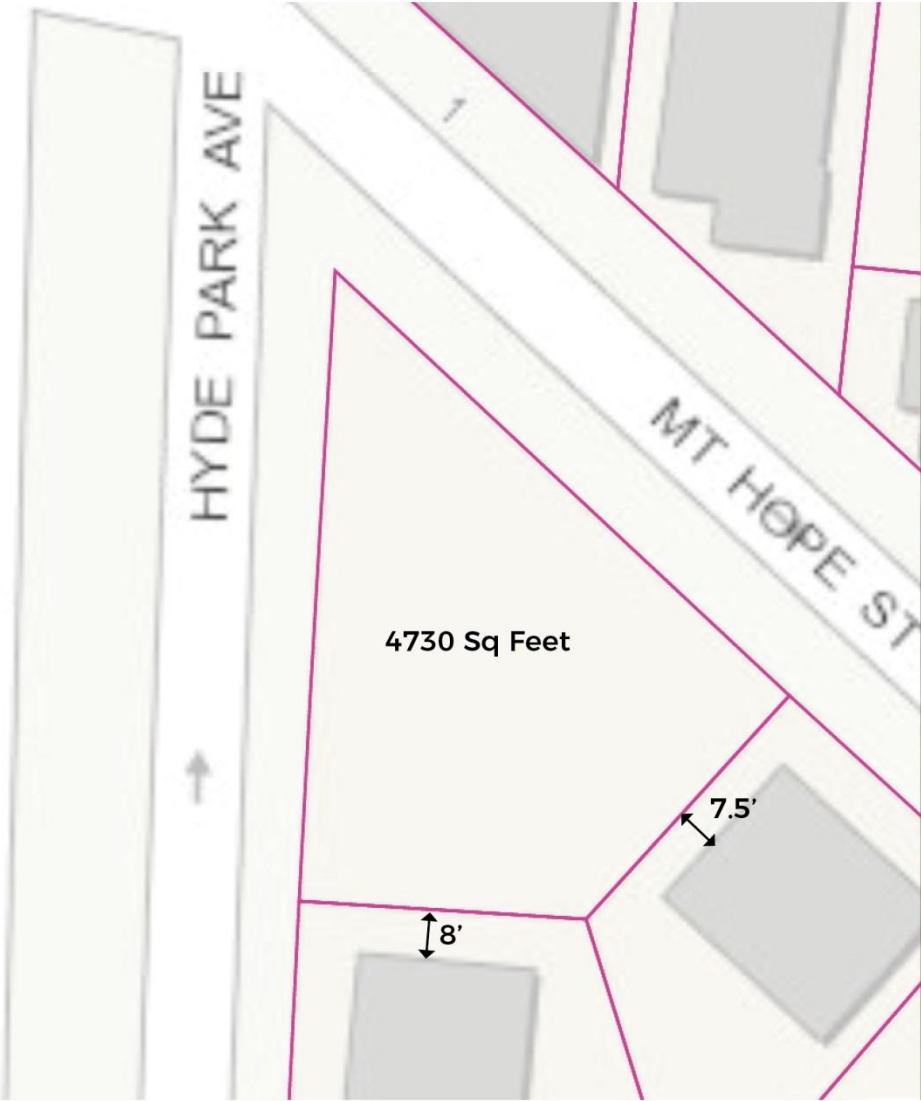
One way

Wood Fence

Distance to:
 Pagel Playground 0.3 mi. (6 min. walk)
 Healy Playground 0.5 mi (9 min. walk)
 Parkman Playground 0.9 mi (19 min. walk)

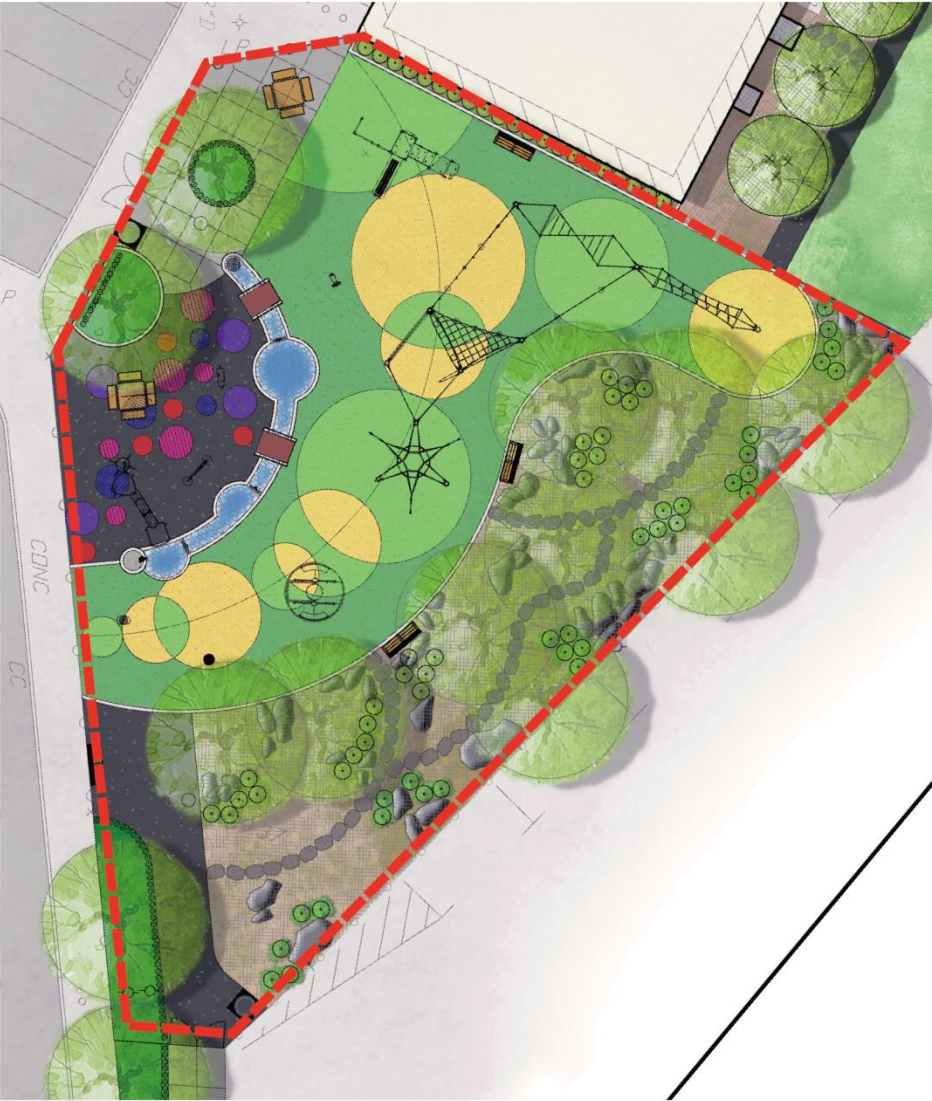
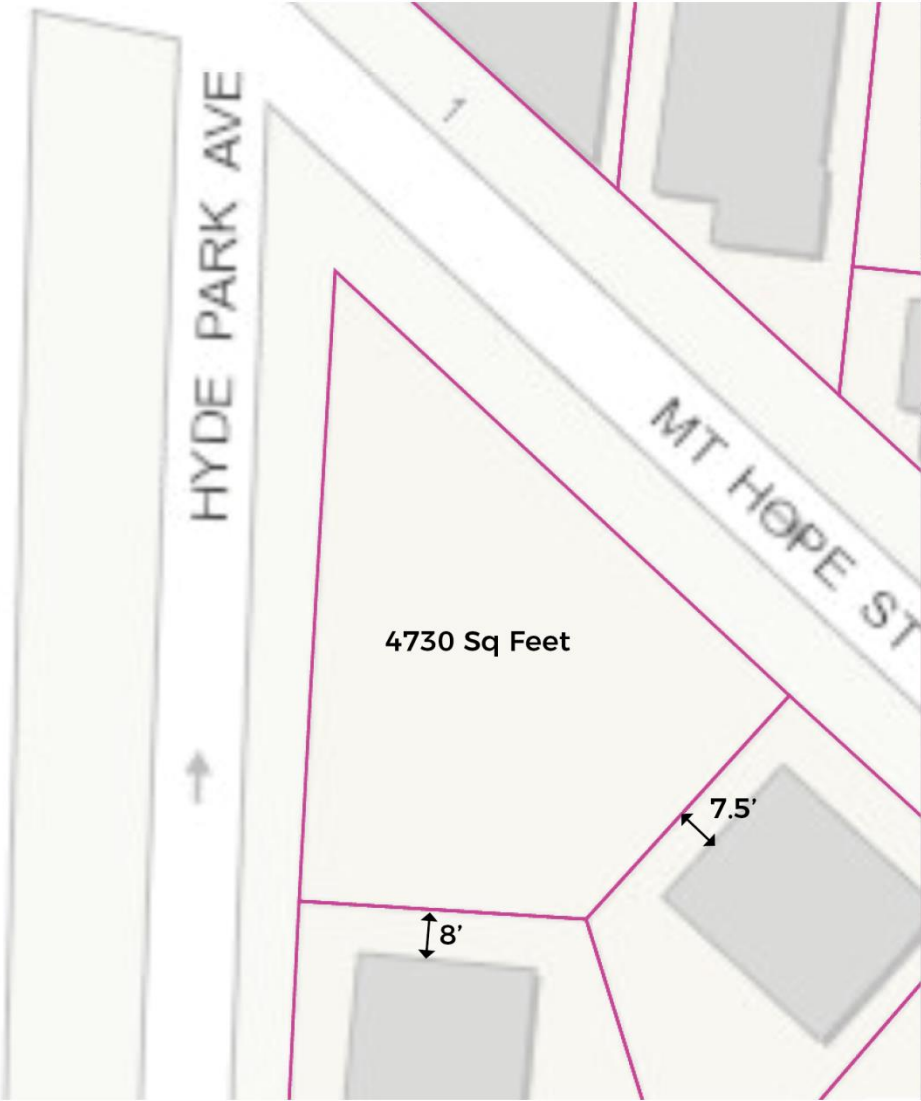


SCALE COMPARISON: NEIGHBORHOOD PRECEDENTS



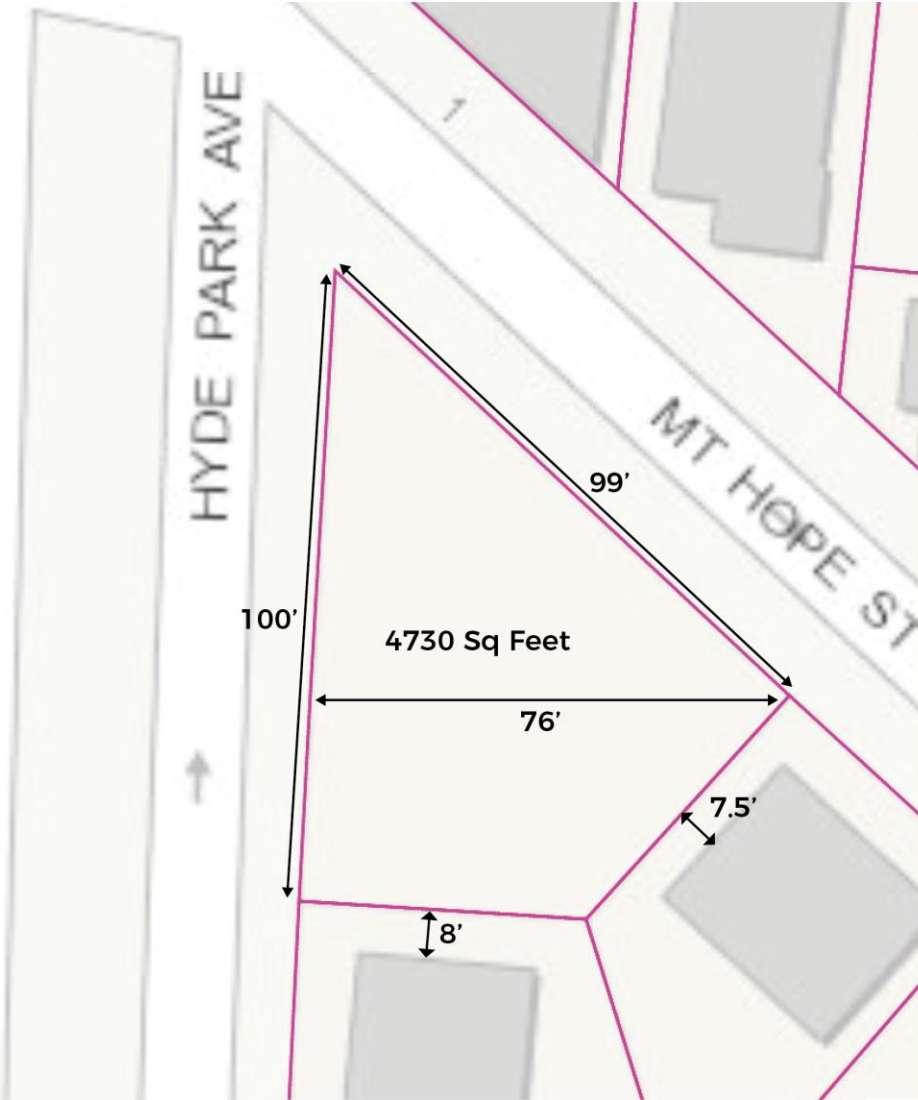
Healy Playground , Roslindale

SCALE COMPARISON: NEIGHBORHOOD PRECEDENTS



Healy Playground , Roslindale

SCALE COMPARISON: PLAY AREA

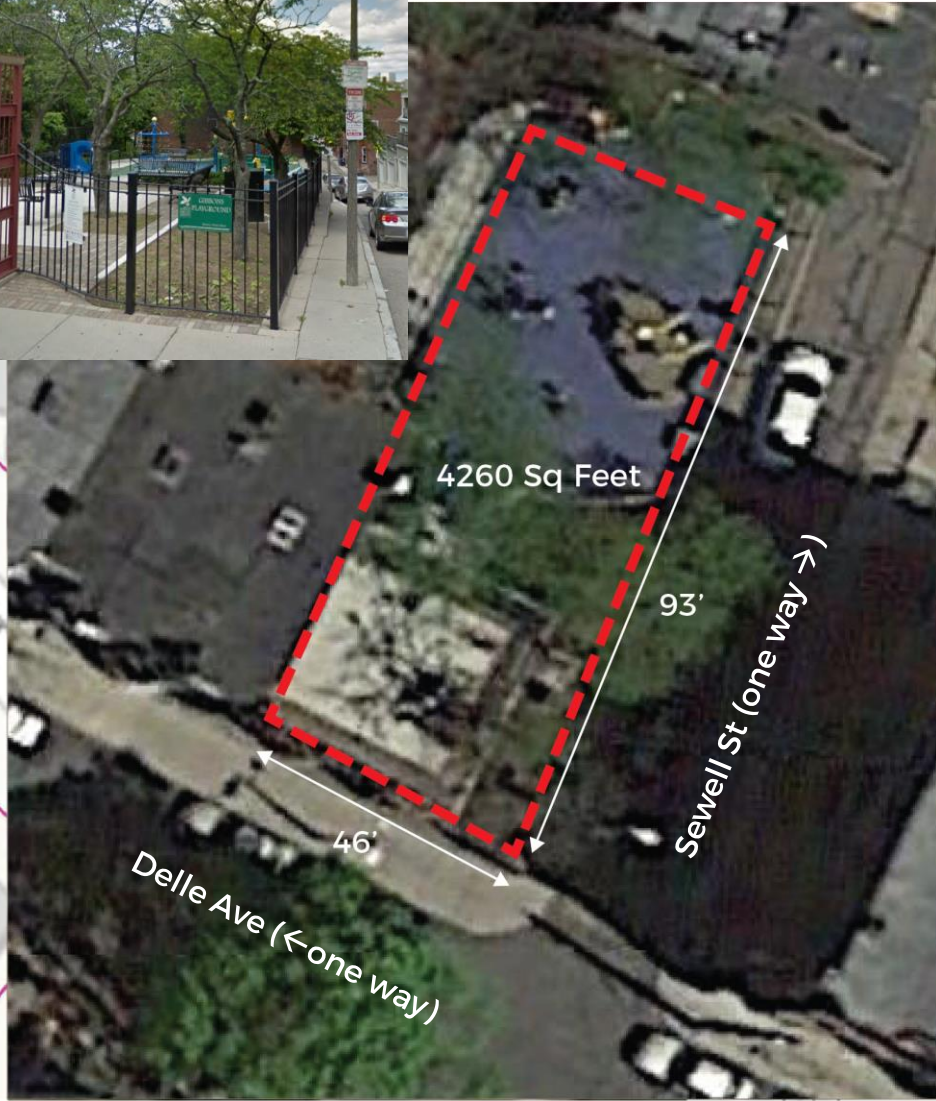
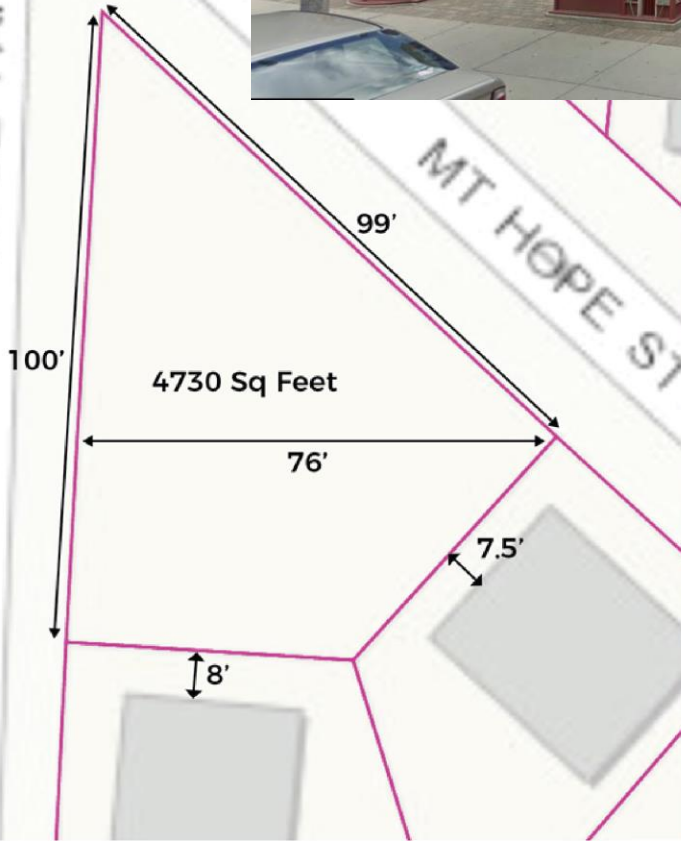


Rossmore Stedman Playground, Jamaica Plain

SCALE COMPARISON: PLAY AREA

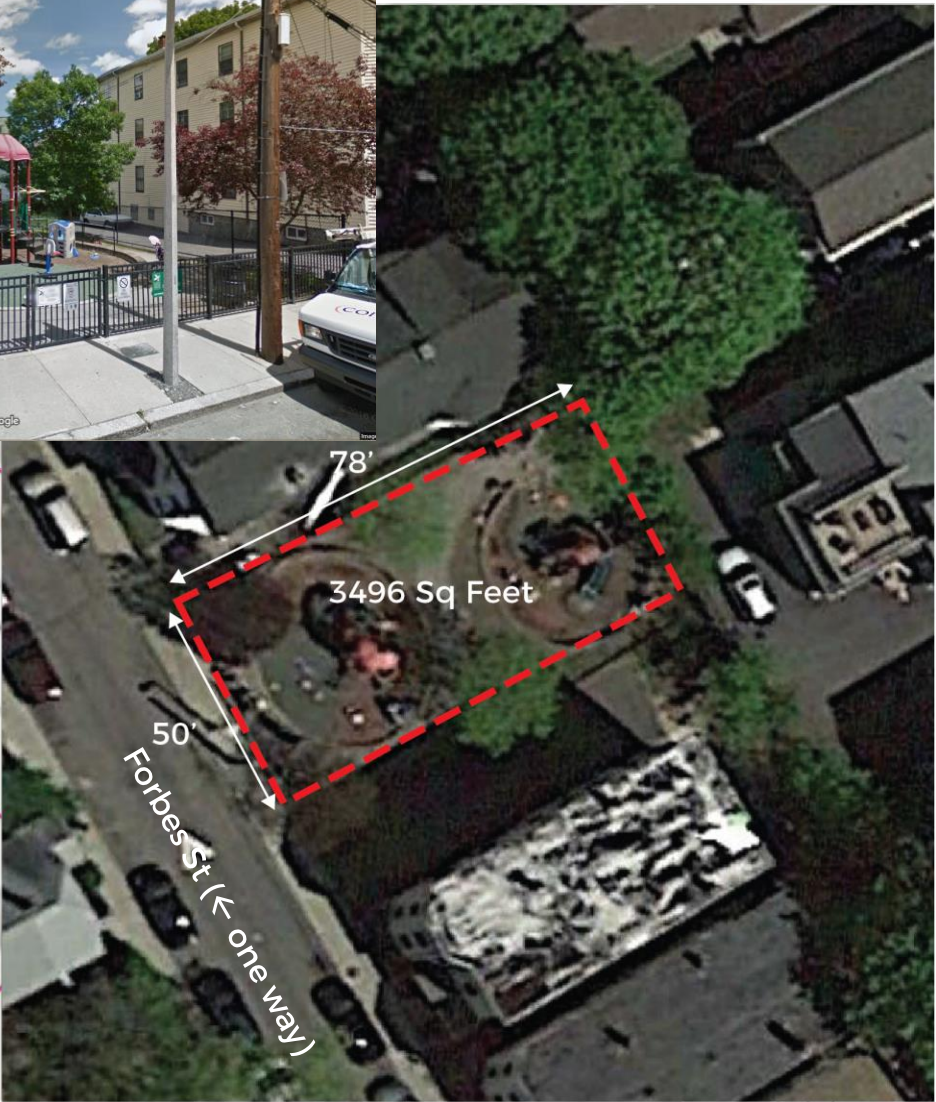


HYDE PARK AVE



Gibbons Playground, Mission Hill

SCALE COMPARISON: PLAY AREA



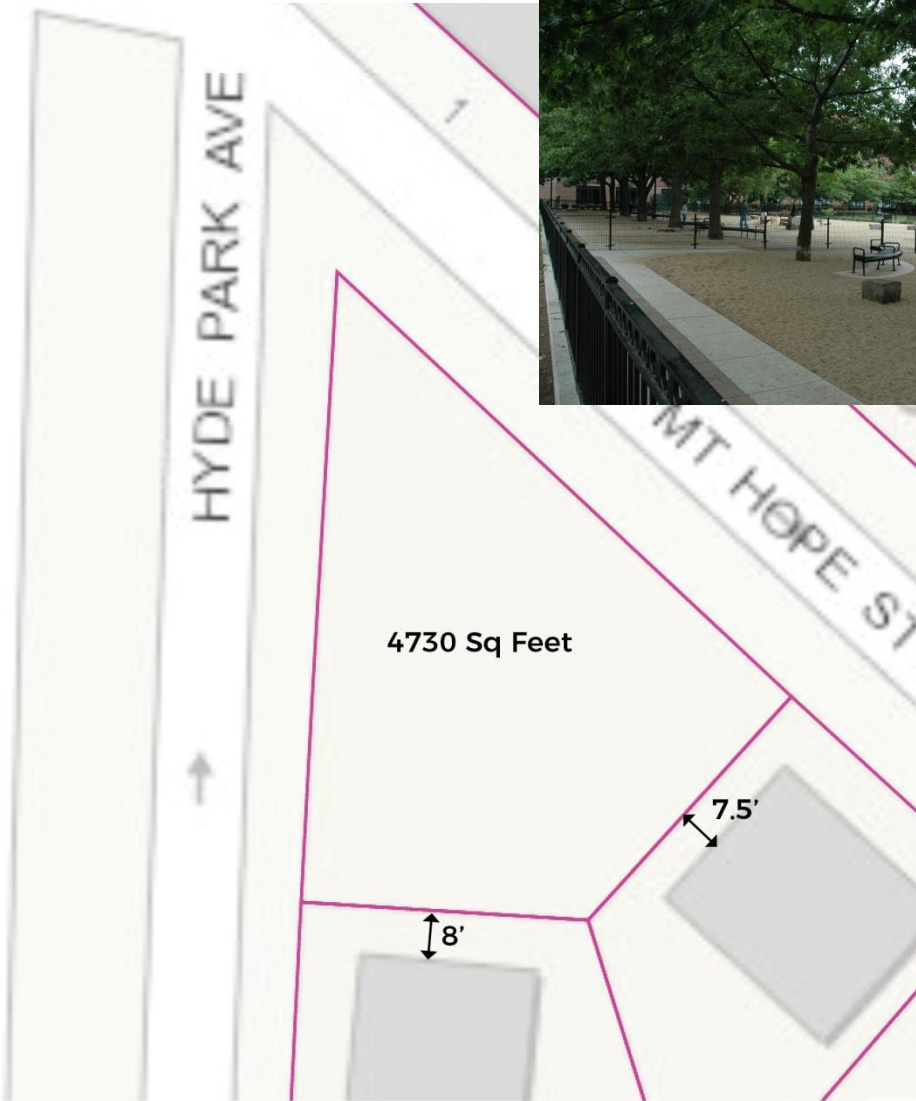
Forbes Street Play Area, Jamaica Plain

SCALE COMPARISON: DOG PARKS



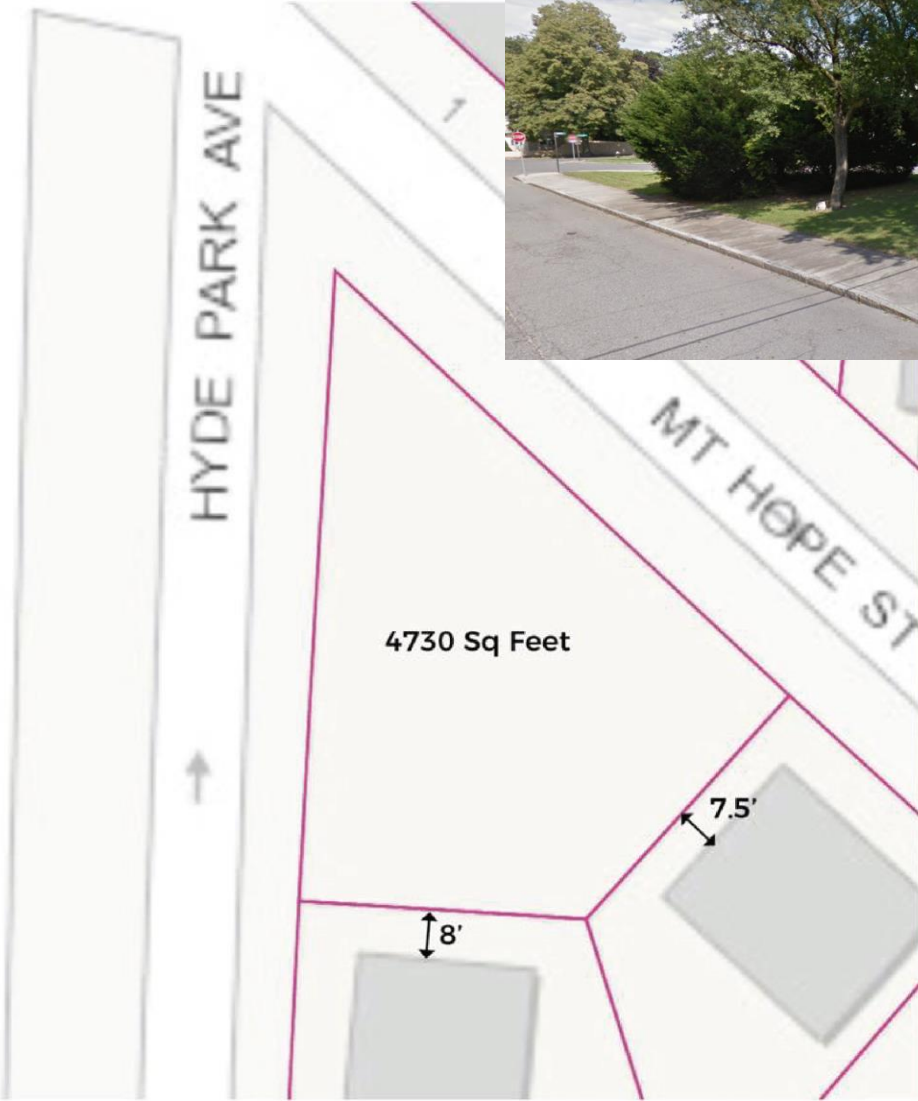
Dog Recreation Space, Ronan Park, Dorchester

SCALE COMPARISON: DOG PARKS



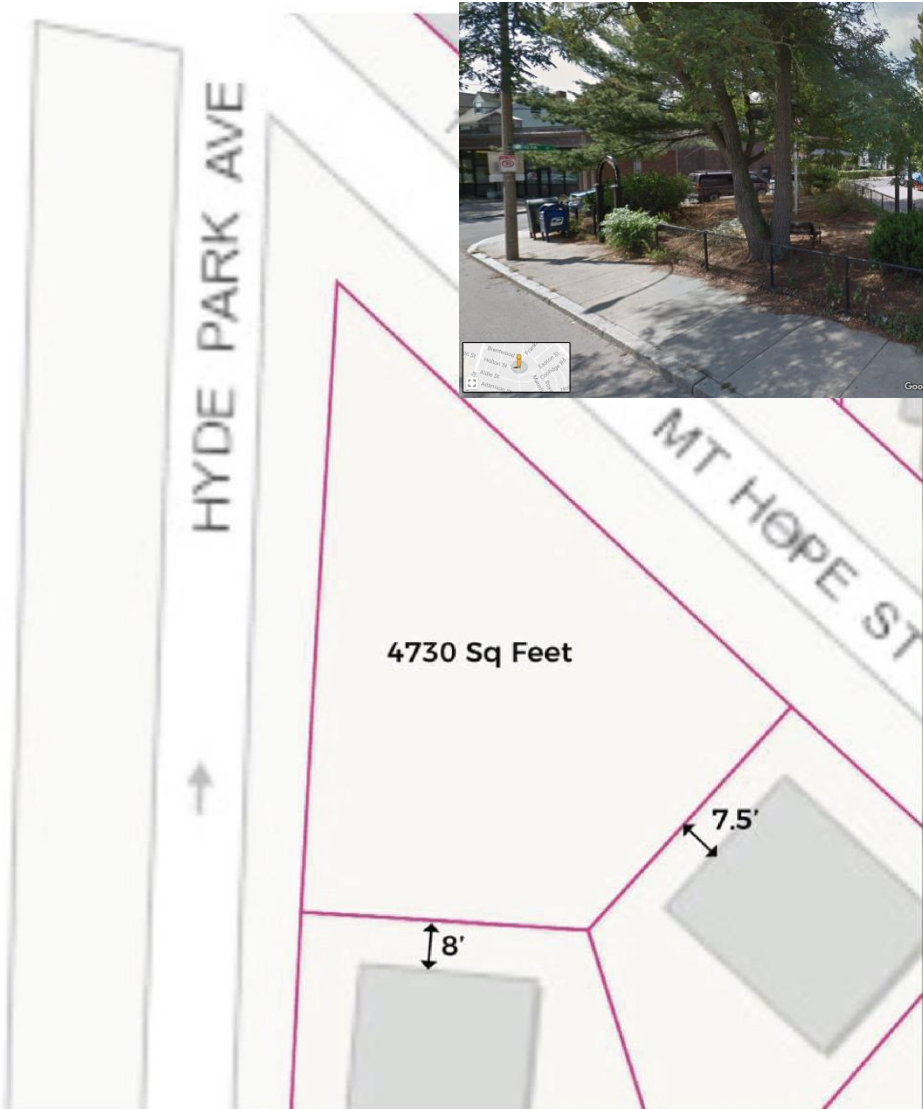
Joe Wex Dog Area, Peters Park, South End

SCALE COMPARISON: PASSIVE



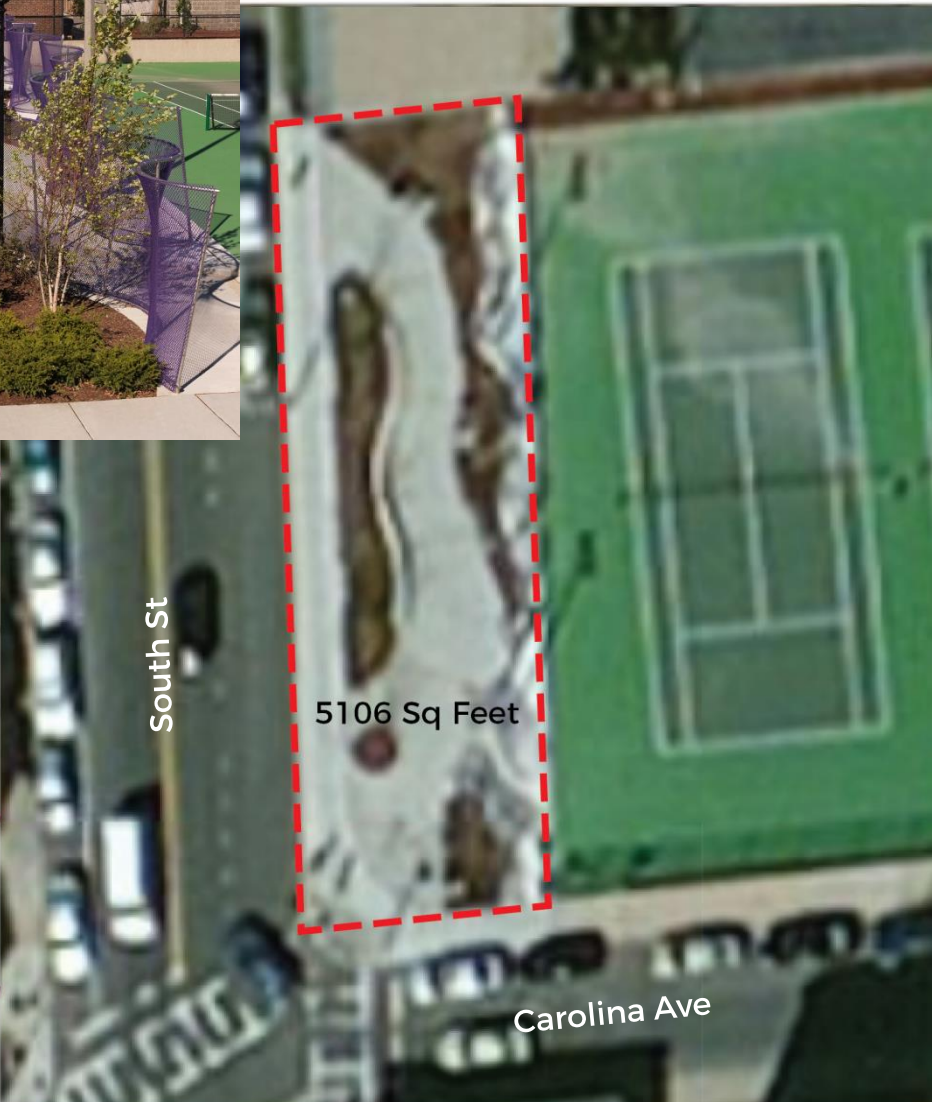
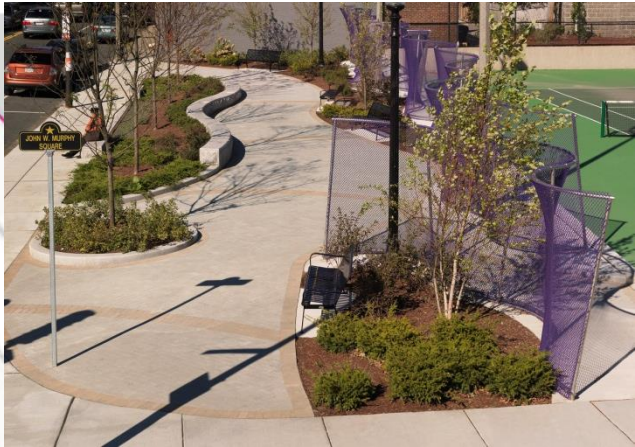
Piemonte Park, West Roxbury

SCALE COMPARISON: PASSIVE



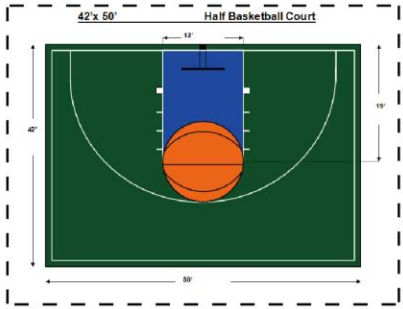
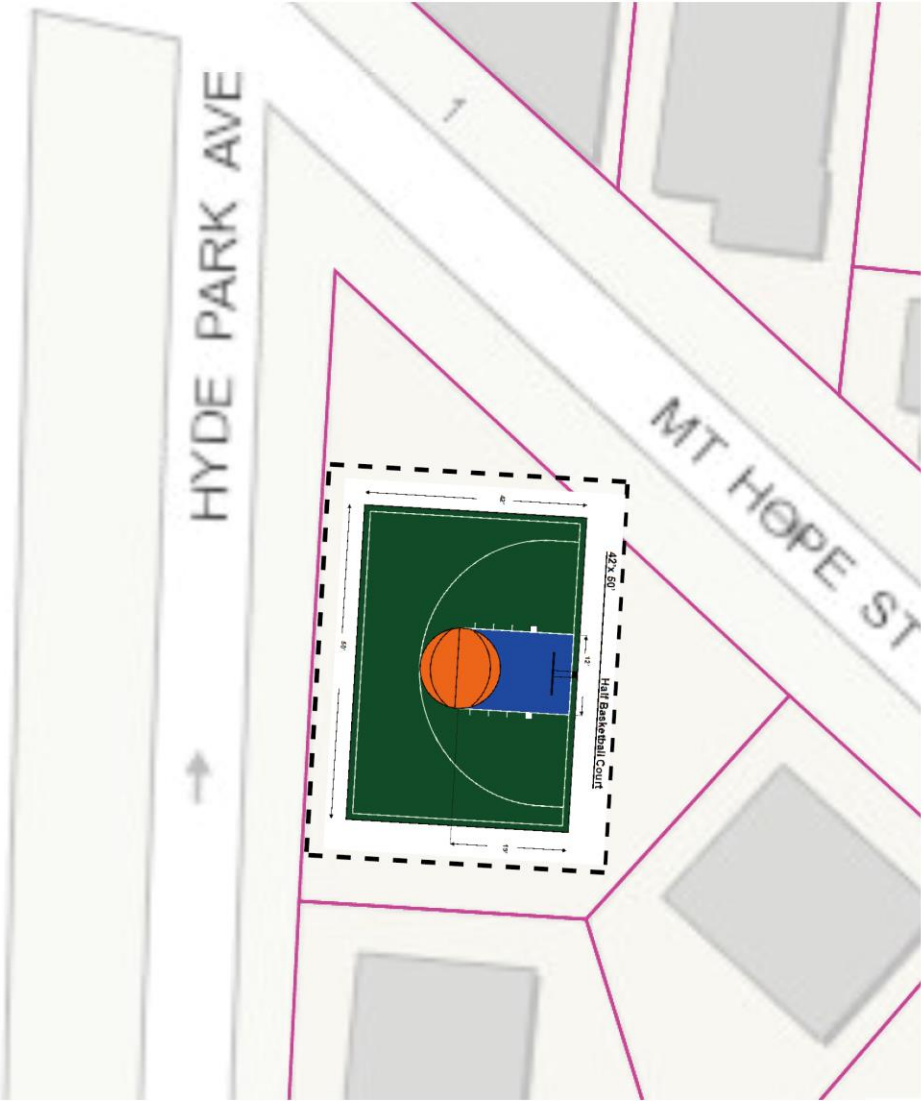
Fern Square (Collins Square), Allston

SCALE COMPARISON: PASSIVE

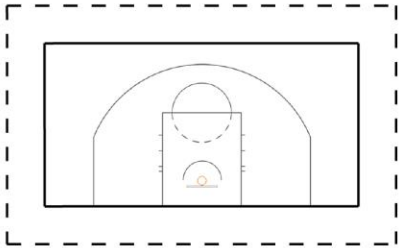


South Street Mall, Jamaica Plain

SCALE COMPARISON: ACTIVE RECREATION- BASKETBALL



42'x50' HALF BASKETBALL COURT WITH 6' BUFFER



26'x50' HALF BASKETBALL COURT WITH 6' BUFFER

0ft 20ft 40ft

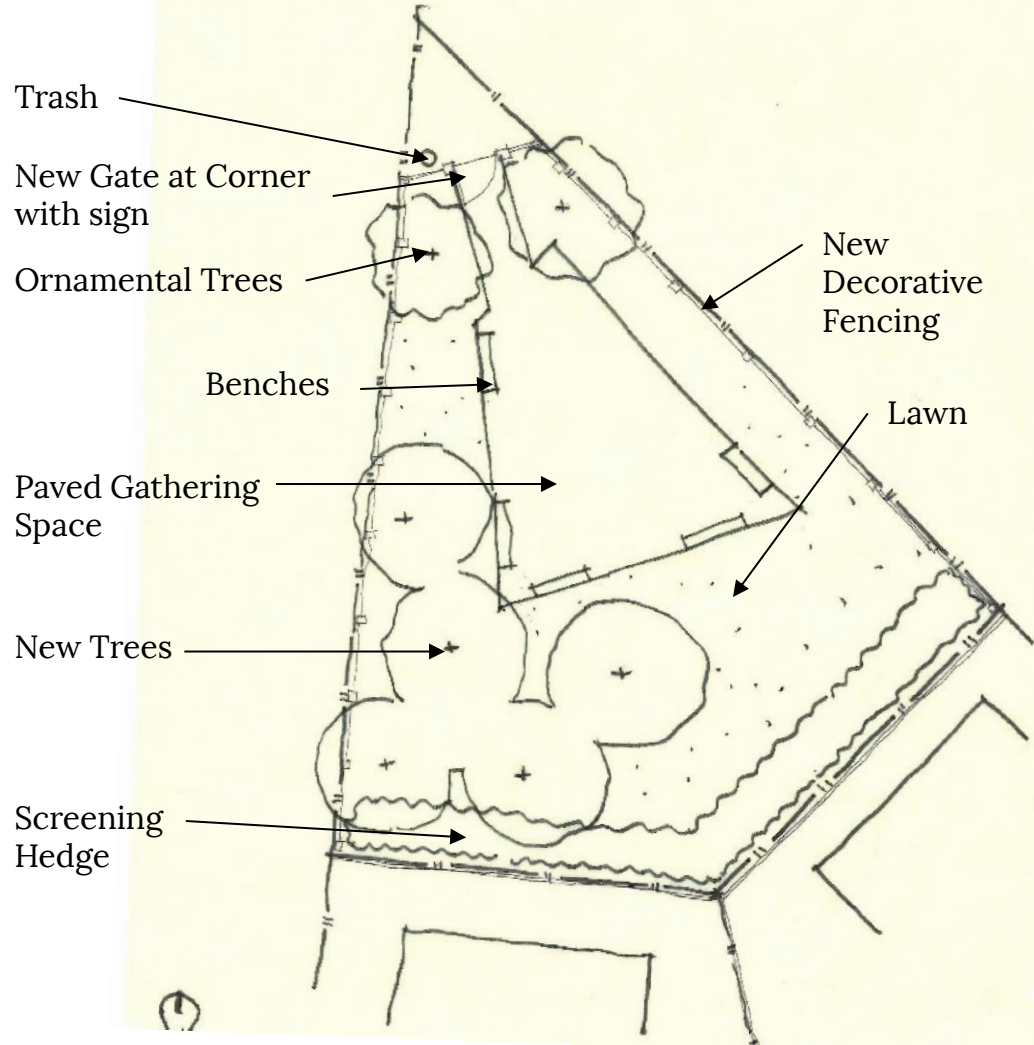
DESIGN ALTERNATIVES



ALTERNATE 1: CENTRAL GATHERING SPACE

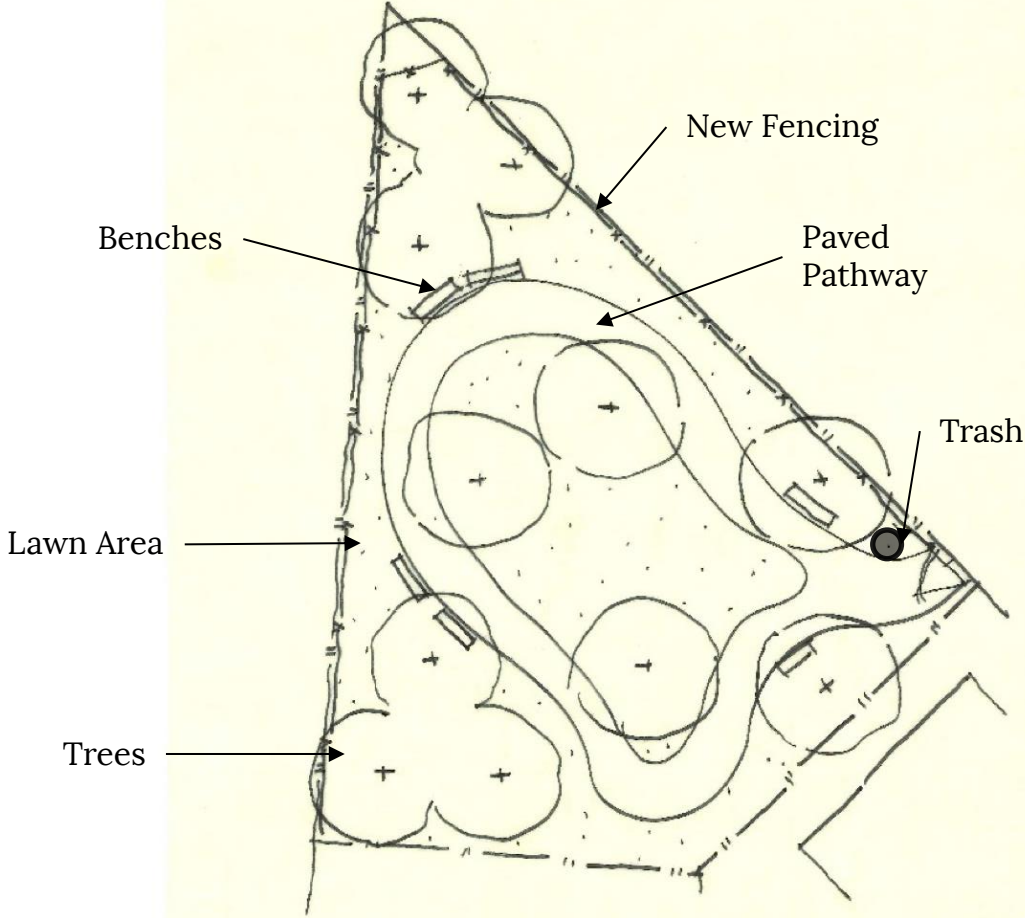
Cost

Paving	1100sf @ \$12/sf	\$13,200
Gate	1 @ \$500/ea	\$500
New Fencing	200lf @ \$70/lf	\$14,000
Mow Strip	200lf @ \$25/lf	\$5,000
Trees	7 @ \$1000/ea	\$7,000
Lawn	3600sf @ \$1/sf	\$3,600
Hedge	35 @ \$120/ea	\$4,200
Trash	1 @ \$1200/ea	\$1,200
Benches	5 @ \$1200/ea	\$6,000
		<hr/>
		\$54,700
Overhead & Profit		\$5,470
General Conditions & Bonds		\$3,829
		<hr/>
TOTAL		\$63,999



ALTERNATE 2: PATHS AND LAWN AREAS

Cost		
Paving	875sf @ \$6/sf	\$5,250
Gate	1 @ \$500/ea	\$500
New Fencing	200lf @ \$40/lf	\$8,000
Trees	11 @ \$1000/ea	\$11,000
Lawn	3825sf @ \$1/sf	\$3,825
Trash	1 @ \$1200/ea	\$1,200
Benches	6 @ \$1200/ea	\$7,200
		<hr/>
		\$36,975
Overhead & Profit		\$3,698
General Conditions & Bonds		\$2,588
		<hr/>
TOTAL		\$43,261



ALTERNATE 3: VISIONING / COMMUNITY LED

COST

Gate	1 @ \$500/ea	\$500
Fencing Repair	allow	\$2,000
Trees	9 @ \$1000/ea	\$9,000
Lawn	4700sf @ \$1/sf	\$4,700
Trash	1 @ \$1200/ea	\$1,200
Benches w/Pads	3 @ \$1500/ea	\$4,500
		\$21,900
Overhead & Profit		\$2,190
General Conditions & Bonds		\$1,533
TOTAL		\$25,623

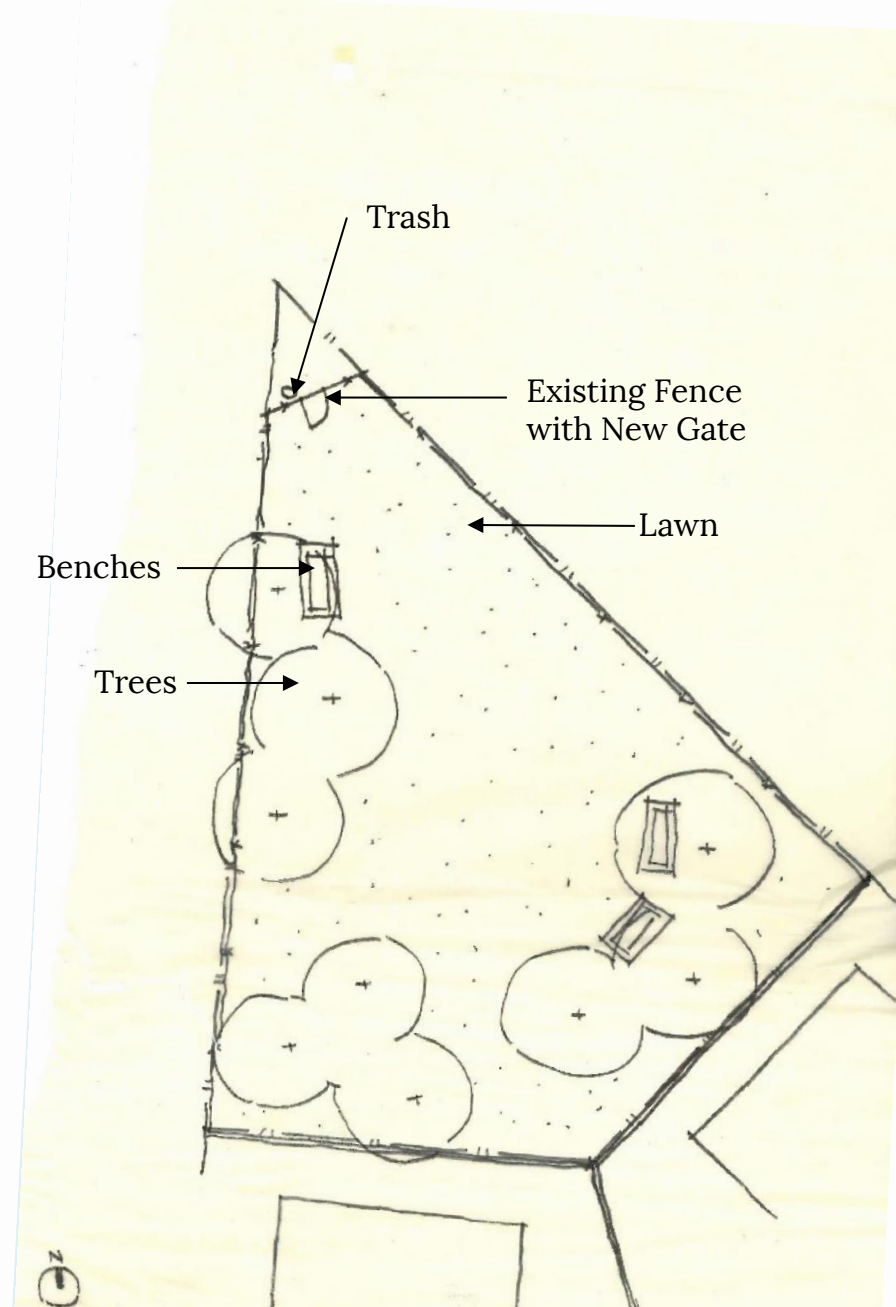
USE THE BALANCE OF THE EXISTING FUNDING FOR:

OPTION 1: Visioning design

- Issue RFQ for designers
- Design a more robust passive park or a small play area
- No guarantee that COB Capital Funding will be secured

OPTION 2: Community led grants under \$10k to activate the space.

- Issue RFP to the public for ideas
- Use Small Changes Grant as a model
- Must be for “improvements” not programming





LISTENING & DISCUSSION

Help us build great parks by providing input on what matters to you.



Mt Hope St

Philbrick St



THANK YOU!

Cathy Baker-Eclipse, Project Manager
cathy.baker-eclipse@boston.gov or 617-961-3058

Marchelle Jacques-Yarde, Outreach Coordinator, External Affairs
marchelle.jacques-yarde@boston.gov or 617-961-3006

Daniel Murphy, Office of Neighborhood Services
daniel.m.murphy@boston.gov or 617-635-3307

For questions, maintenance requests or
concerns regarding any of our parks, contact 311



March 28, 2017
Boston Parks and Recreation

