

**PROJECT TEAM:**

ALLISON PERLMAN  
Boston Parks Project Manager  
allison.perlman@boston.gov

MARCHELLE JACQUES-YARDE  
Outreach Coordinator, External Affairs  
jacques-yarde@boston.gov

JOHN ALLISON  
Office of Neighborhood Services Rep.  
john.allison@boston.gov

NAOMI COTTRELL  
MCLA, Principal  
naomi@michellecrowley-la.com

# FLAHERTY PARK



## PROJECT SCHEDULE & FUNDING

TODAY: MARCH 23, 2017  
COMMUNITY MEETING 1  
SITE ANALYSIS AND PUBLIC SURVEY

MAY 2017:  
COMMUNITY MEETING 2

JUNE 2017:  
COMMUNITY MEETING 3

SUMMER/FALL 2017:  
DESIGN DEVELOPMENT &  
CONSTRUCTION DOCUMENTS

SPRING 2018:  
CONSTRUCTION  
ESTIMATED COST OF CONSTRUCTION:  
\$ 560,000

LOCAL PARKS

SURVEY RESPONSES



### UTILITY AREA

CURRENTLY FULL OF VOLUNTEER TREES AND WEEDS.

UTILITIES WILL REMAIN AND STAY FENCED OFF FROM THE PARK AREA.



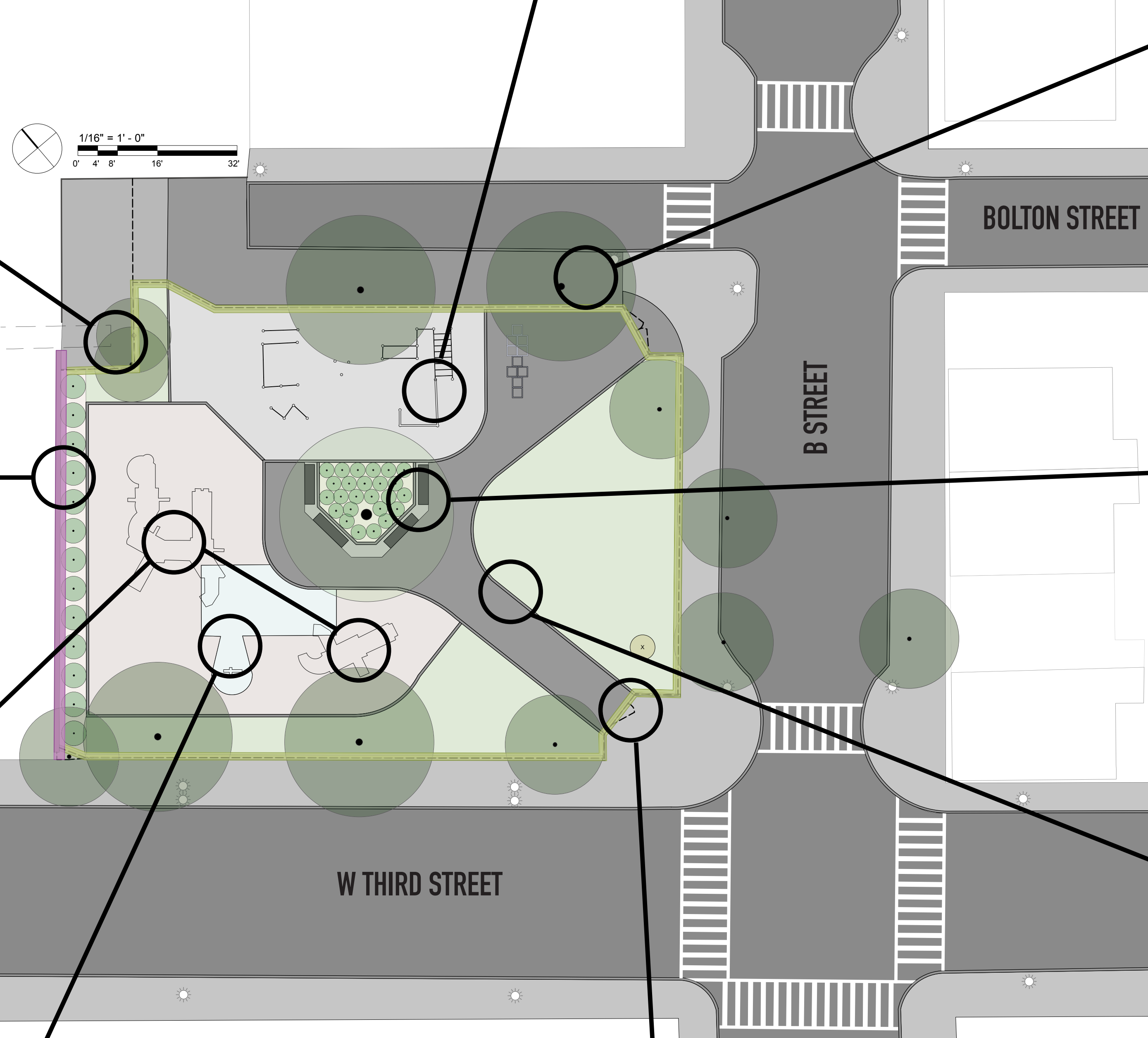
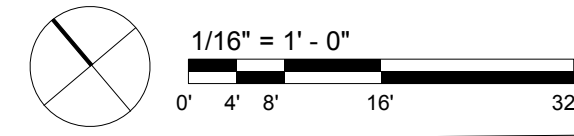
### ADULT PLAY

COULD BE UPDATED TO INCORPORATE ADULT FITNESS INTO THE CHILDREN'S PLAY STRUCTURES. GRAVEL SURFACING IS INACCESSIBLE.



### ASPHALT SIDEWALK

ASPHALT SURROUNDING THE TREES ON THE PROPERTY EDGE IMPAIRS TREE HEALTH.



### SOUND BARRIER WALL

OPPORTUNITY FOR IDENTITY. GATEWAY TO SOUTHWEST? CAN BE USED AS A CLEAN SIMPLE BACKDROP TO THE PARK OR BECOME A BRIGHT FEATURE IN THE NEIGHBORHOOD.



### SEATING

LIMITED SEATING LOCATED IN THE CENTER OF THE PARK.



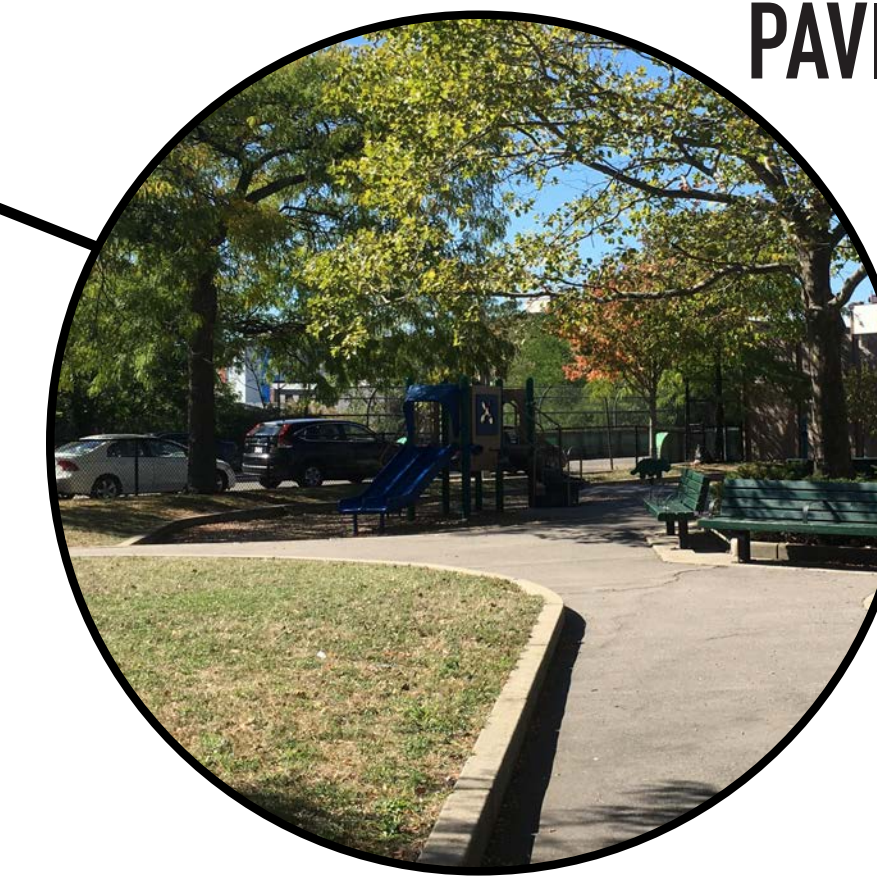
### CHILDREN'S PLAY

PLAYGROUND EQUIPMENT FOR AGES 5-12 AND 2-5 OUTDATED. CURRENTLY NOT ACCESSIBLE. DOES NOT PROVIDE FULL RANGE OF POSSIBLE PLAY EXPERIENCES.



### PAVING AND LAWN

THE PAVED SURFACES ARE EDGED BY A RAISED CURB MAKING THE LAWNS AND PLAY AREAS INACCESSIBLE. ASPHALT WALK DOESN'T LEAD ANYWHERE, TAKES YOU TO A DEAD END.



### RUBBER SURFACING

ALL PLAYGROUND EQUIPMENT IS INACCESSIBLE DUE TO THE LIMITED EXTENT OF THE RUBBER SURFACING.



### CHAIN LINK FENCE

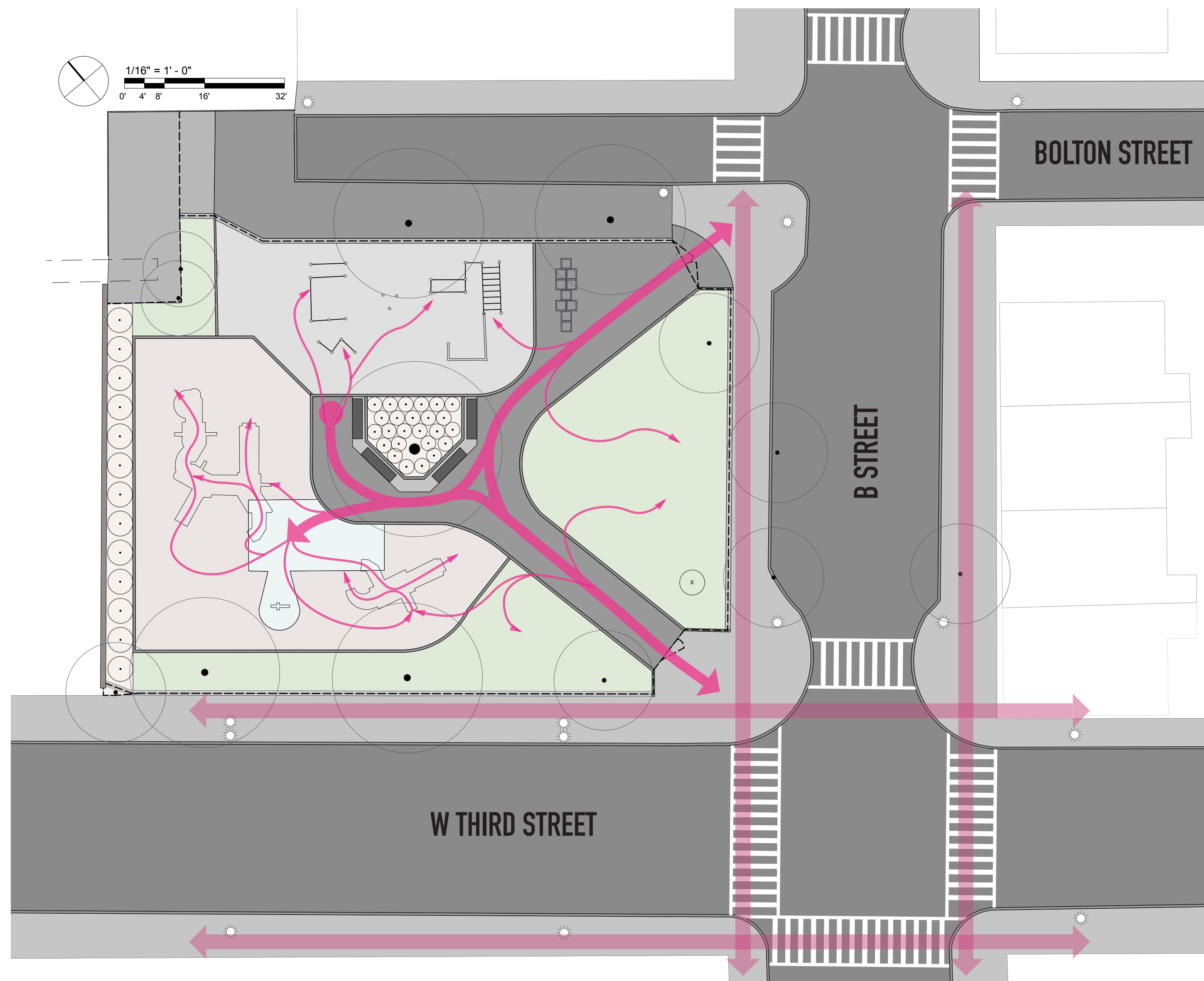
CONTAINS PARK WELL, COULD USE SOME REPAIRS.

KEEPS PLAY AREA SEPARATE FROM STREET.



# EXISTING CONDITIONS FLAHERTY PARK





- URBAN MOVEMENT
- MAJOR PARK MOVEMENT
- MINOR PARK MOVEMENT (INACCESSIBLE)



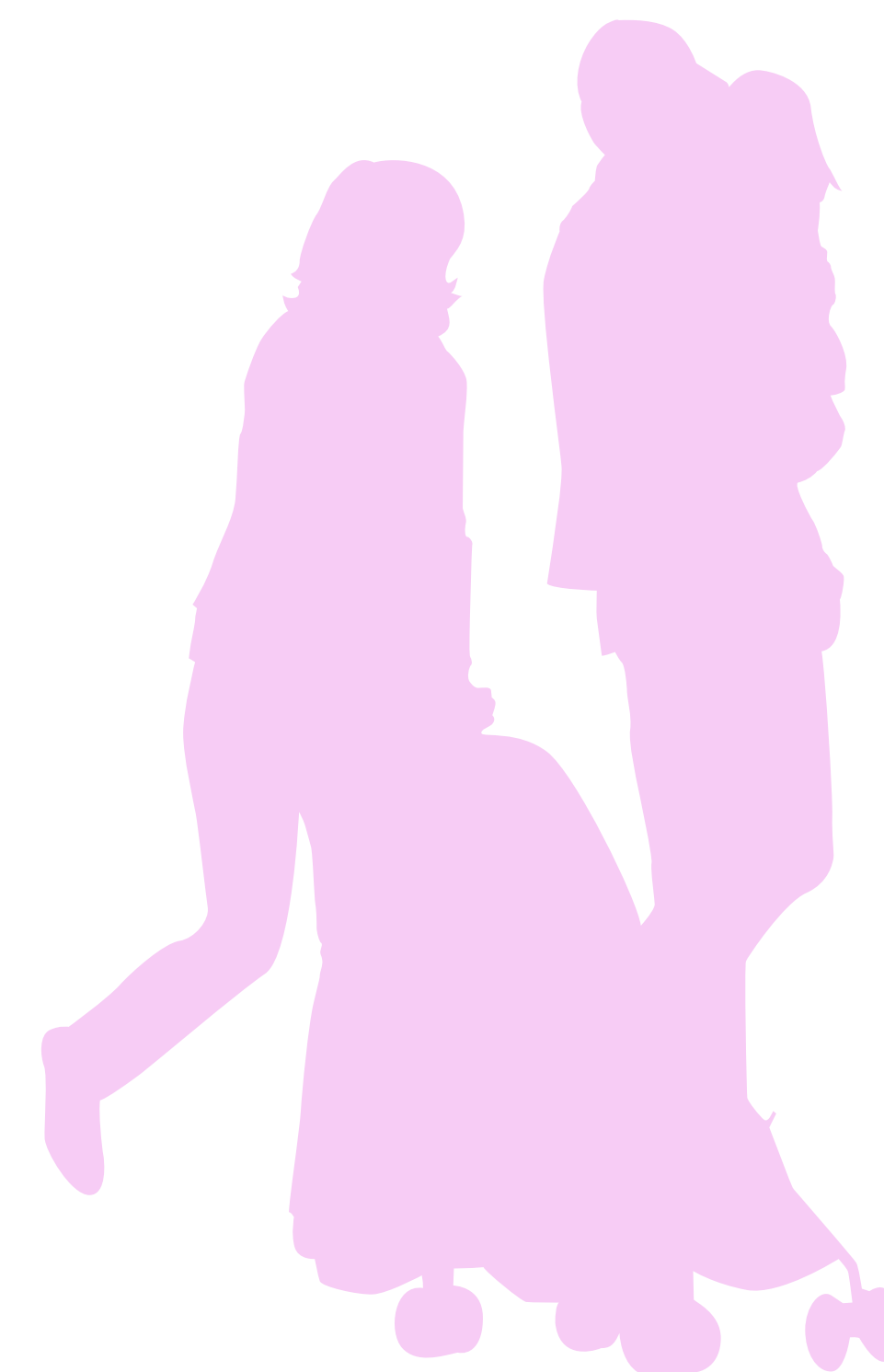
## EXISTING CONDITIONS:

- CURBS DIVIDE EACH AREA WITHIN THE PARK
- PLAY SURFACING DROPS OFF
- CIRCULATION IS A DEAD END



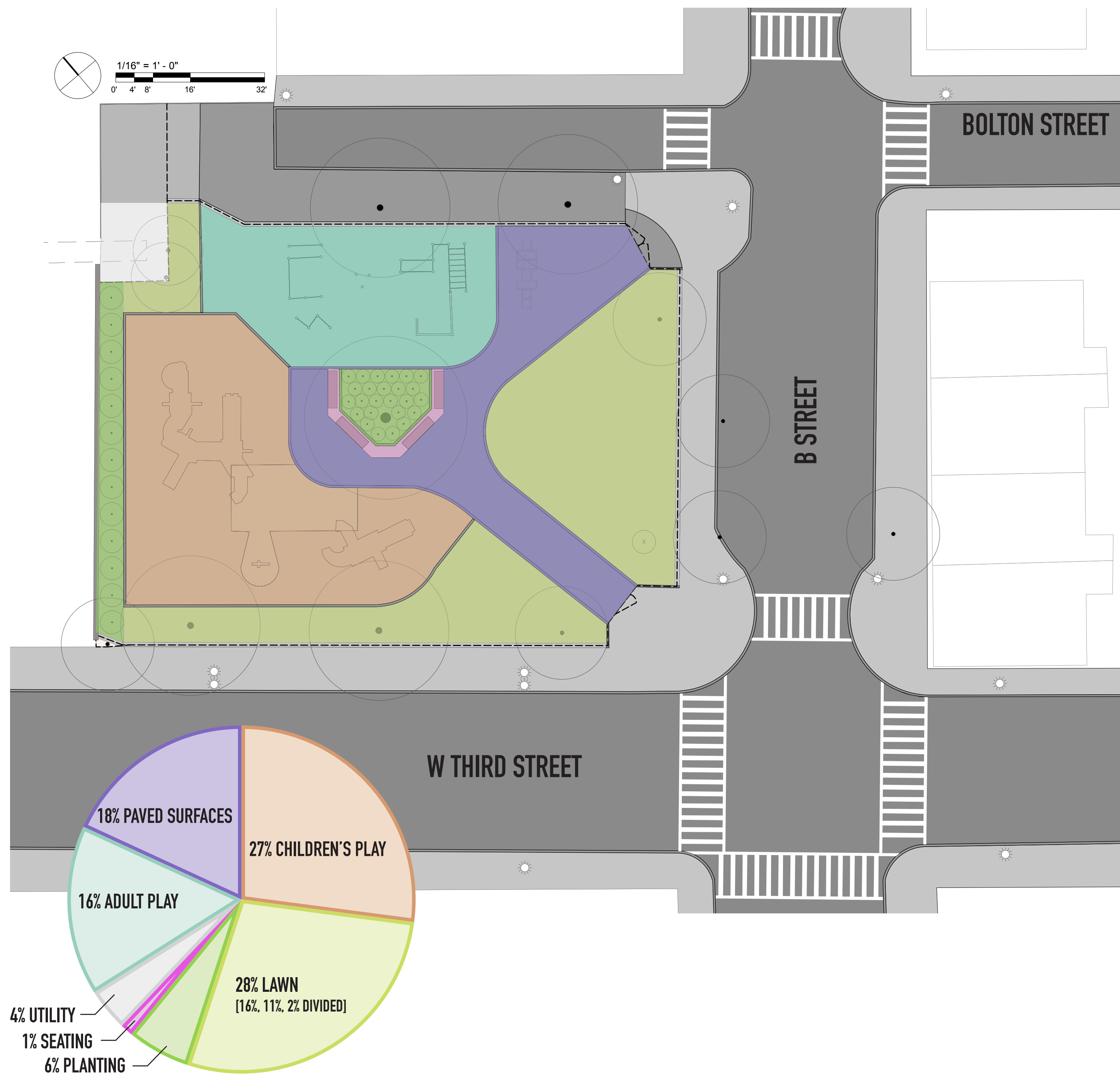
## POTENTIAL MOVEMENT IMPROVEMENTS & PROJECT GOALS

- ↳ ALL SURFACES FLUSH TO ALLOW ACCESSIBILITY THROUGHOUT
- ↳ NEW ENTRANCE LOACTIONS TO INCREASE ACCESS TO THE PARK



**MOVEMENT  
FLAHERTY PARK**





## EXISTING CONDITIONS:

- EACH ZONE IS SEPARATED
- LAWN AREAS ARE DIVIDED AND INACCESSIBLE



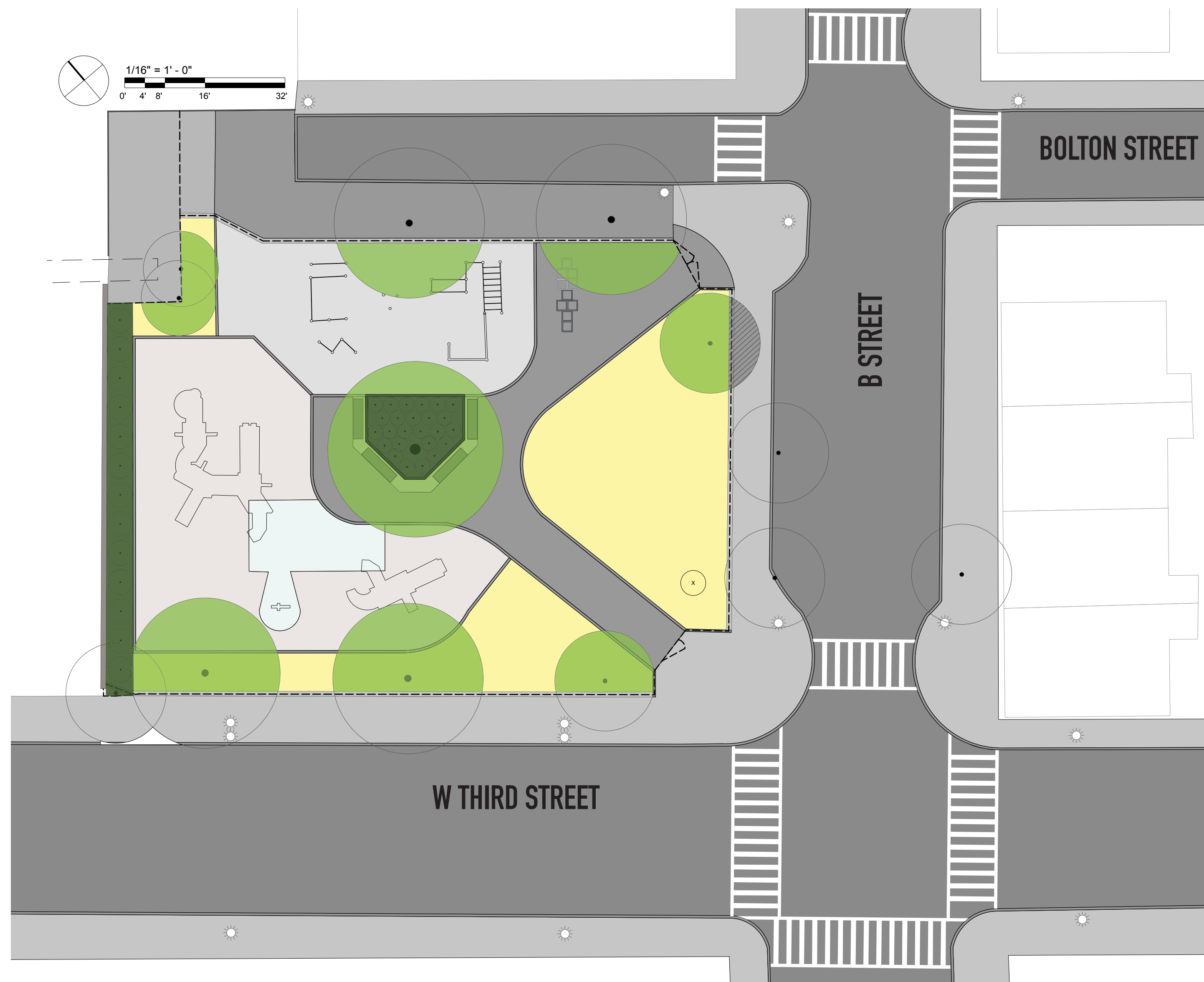
## POTENTIAL ZONE IMPROVEMENTS & PROJECT GOALS

- ↳ INTEGRATING CHILDREN'S PLAY EQUIPMENT WITH FEATURES THAT CAN BE USED FOR ADULT FITNESS
- ↳ CREATING MULTI-USE SPACES & FEATURES



ZONES  
FLAHERTY PARK





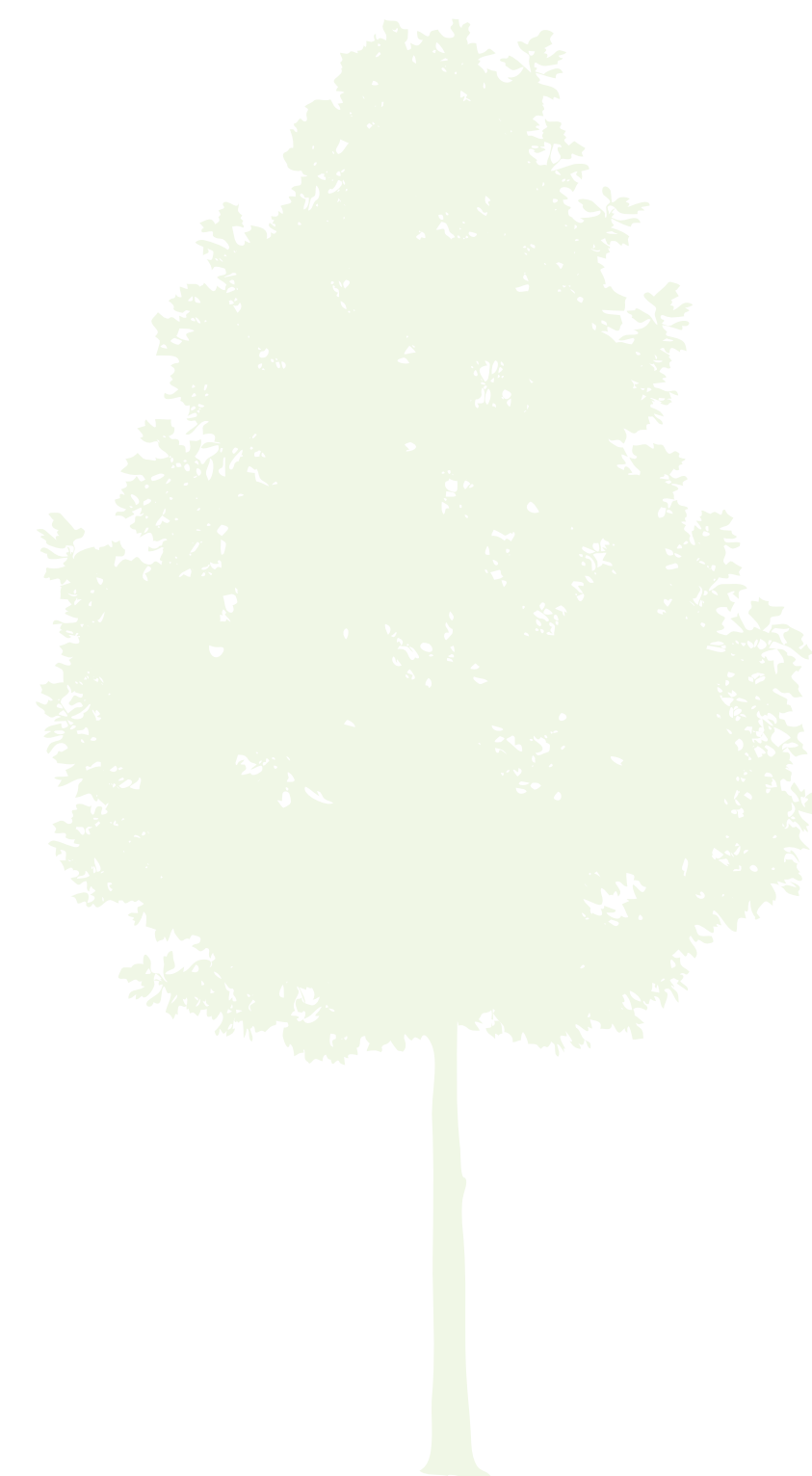
## EXISTING CONDITIONS:

- CANOPY COVER IS PRIMARILY ON THE EDGES OF THE PARK
- VEGETATION IS NOT INTERACTIVE
- CENTRAL TREE IS HIDDEN



## POTENTIAL VEGETATION IMPROVEMENTS & PROJECT GOALS

- ↳ CANOPY COVER IS INTERSPERSED THROUGHOUT THE PARK
- ↳ VEGETATION CAN BE AN ACTIVE PART OF THE PARK DESIGN
- ↳ EMPHASIZE THE CENTRAL TREE AND MAKE IT A FEATURE OF THE PARK



**VEGETATION  
FLAHERTY PARK**





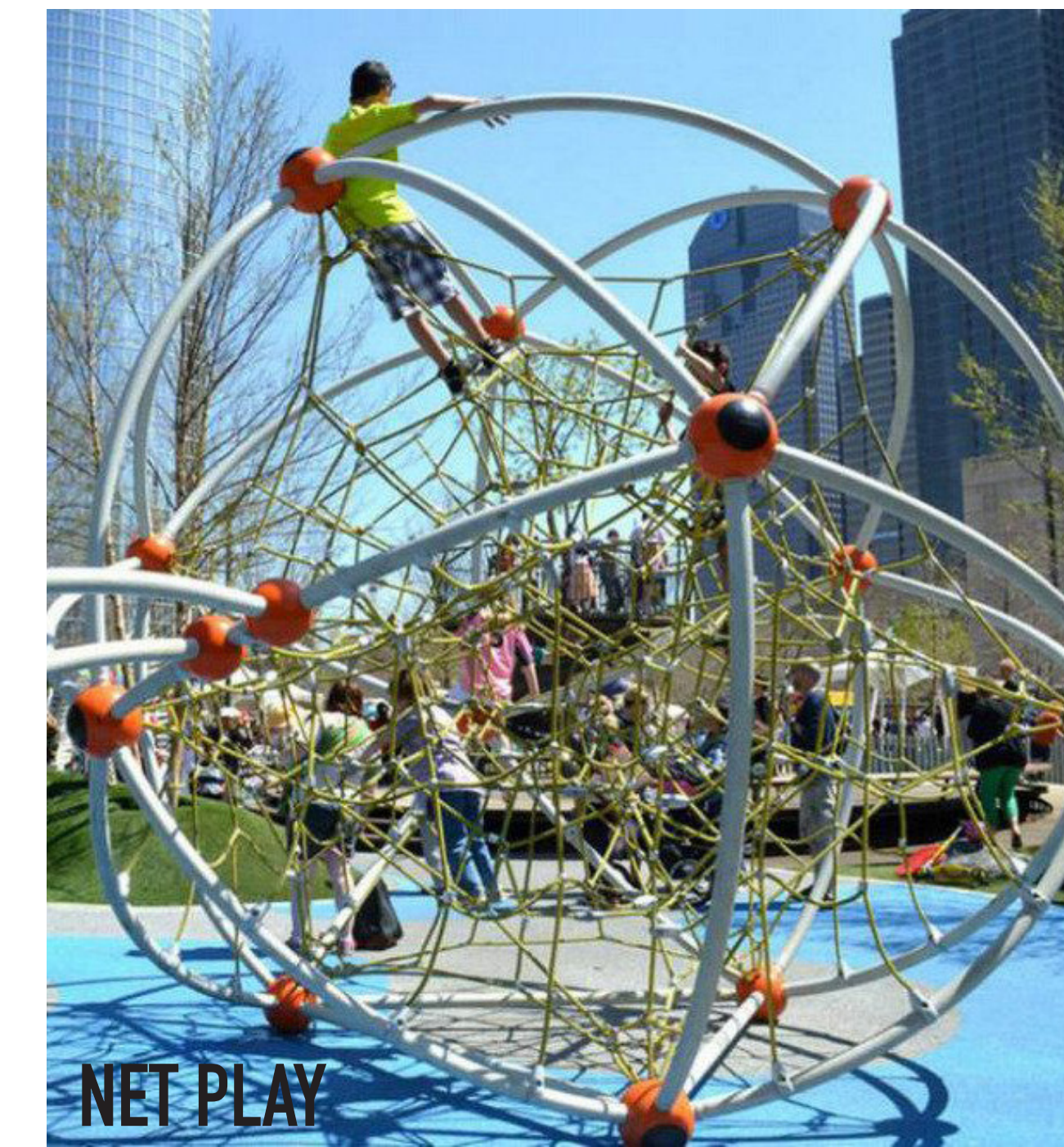
**INTEGRATED VEGETATION**



**WATER PLAY**



**IMAGINATIVE PLAY**



**NET PLAY**



**ADULT EQUIPMENT**



**DISH SWING**



**CLIMBING WALL**



**NATURAL PLAY**



**LINKED PLAY ELEMENTS**



**SPINNING**



**LARGE TOWER AND SLIDE**



**SMALL TOWER AND SLIDE**

**PLAY EQUIPMENT INSPIRATION  
FLAHERTY PARK**





WOOD DECK



ORNAMENTAL GRASSES



LAWN



SEATING



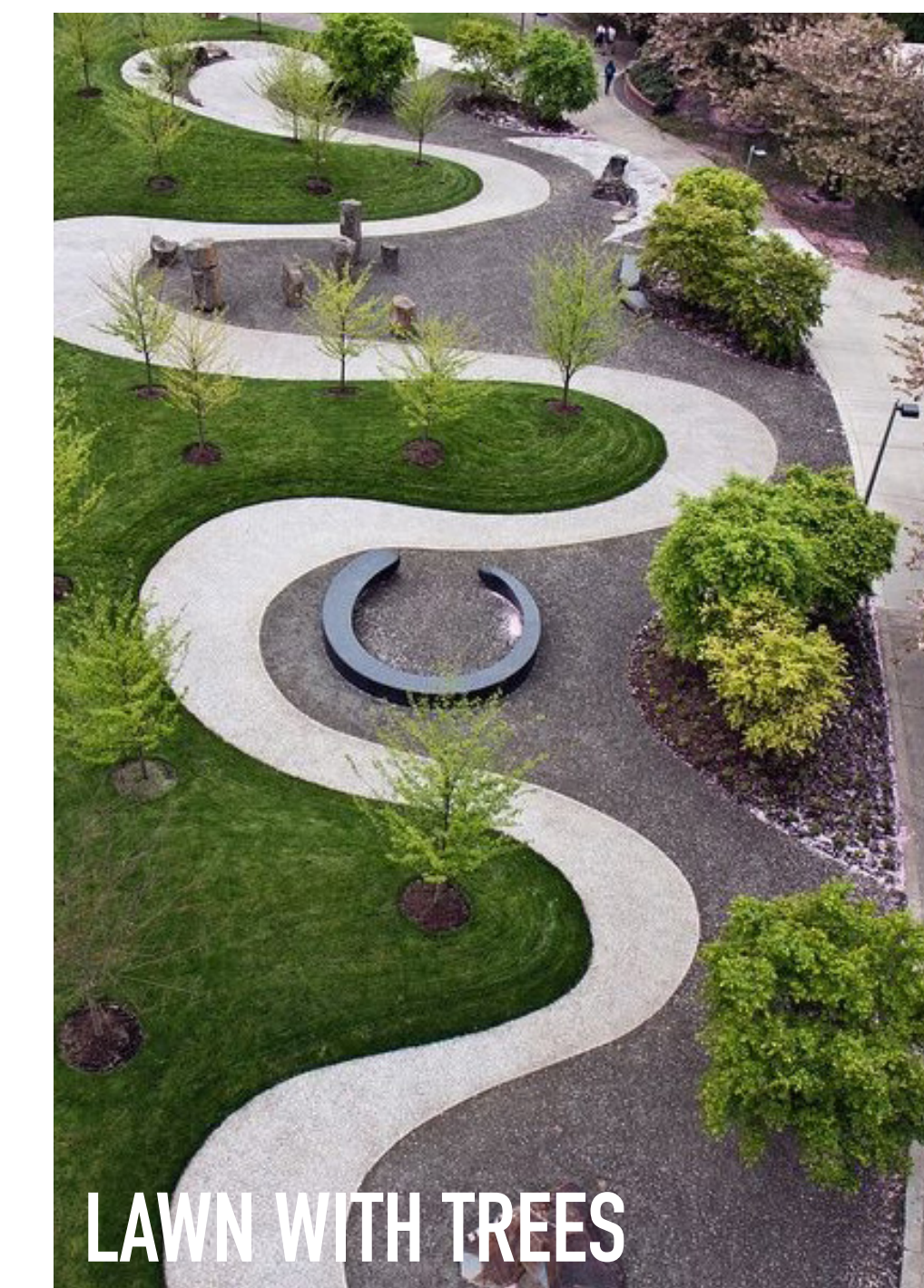
TREES THROUGH DECKING



LAWN PANEL



PERENNIALS MAINTAINED BY A GARDEN CLUB?



LAWN WITH TREES



TREE HOUSE



SEATING WITH CENTRAL VEGETATION



PLANTING WITH PLAY

VEGETATION INSPIRATION  
**FLAHERTY PARK**





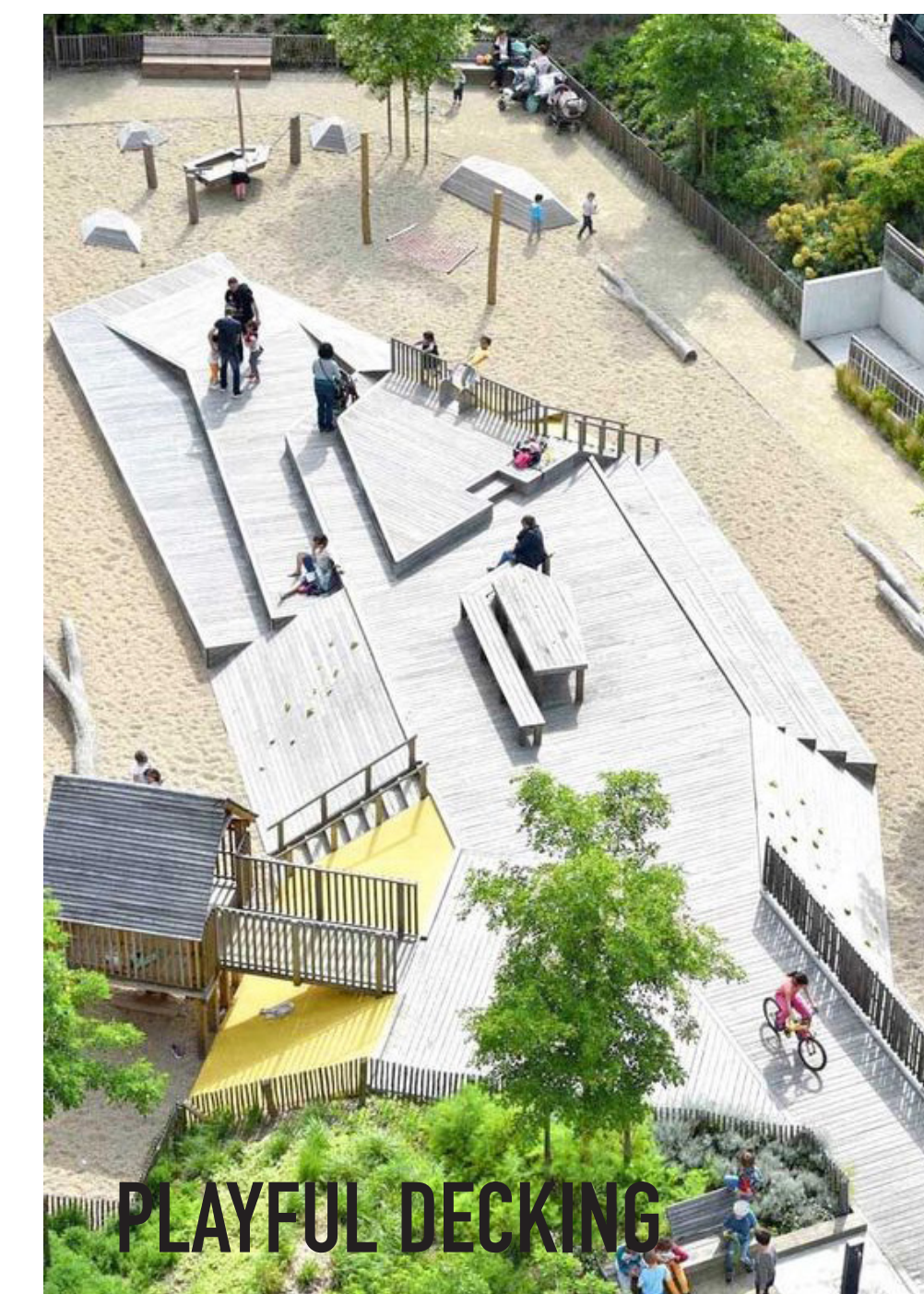
**MOVIE NIGHT**



**MURAL**



**CURVED SEATING**



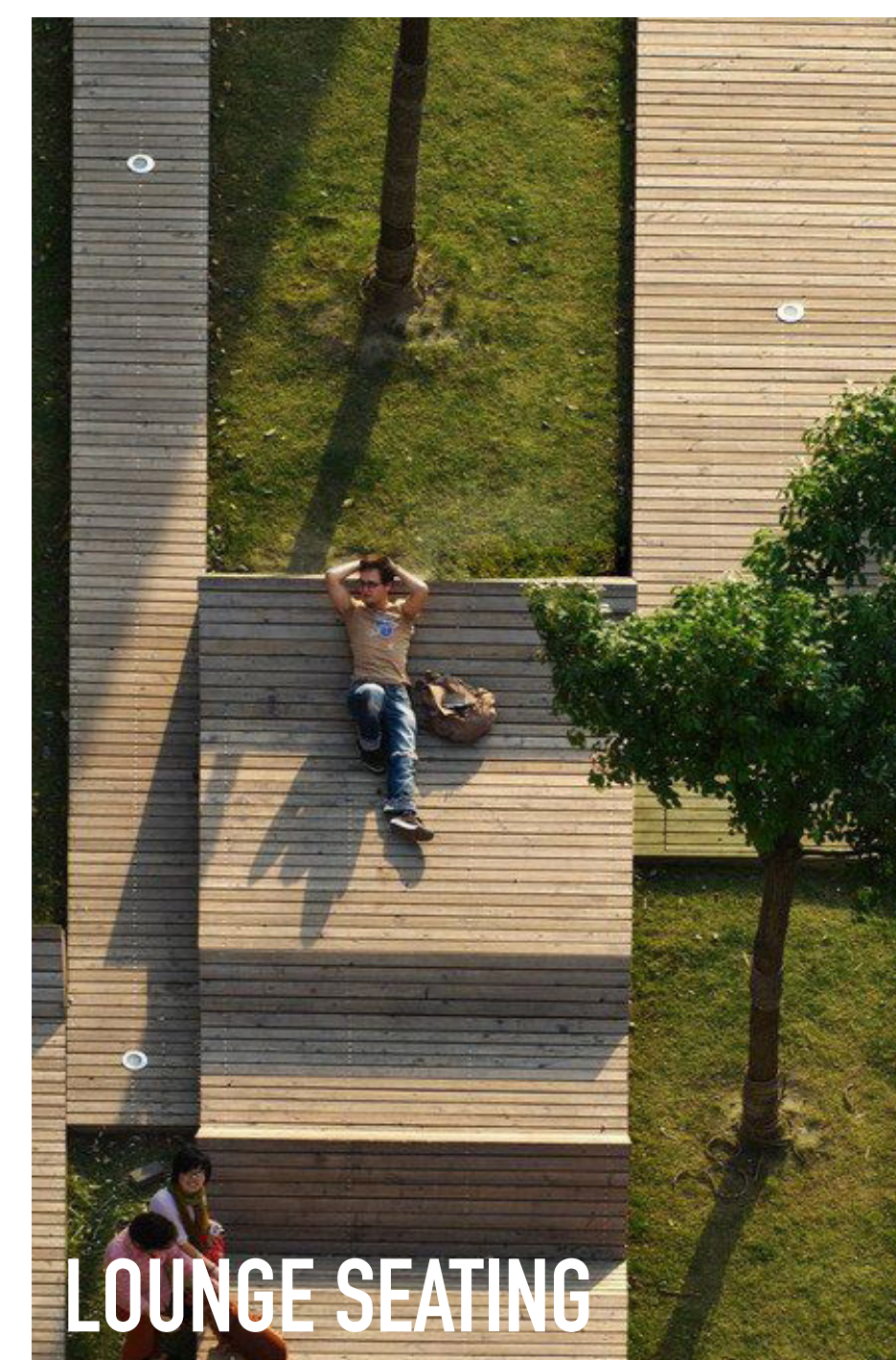
**PLAYFUL DECKING**



**POP-UP MARKET**



**BIRTHDAY PARTY**



**LOUNGE SEATING**



**YOGA**



**NEIGHBORHOOD IDENTITY**



**POP-UP EVENTS**



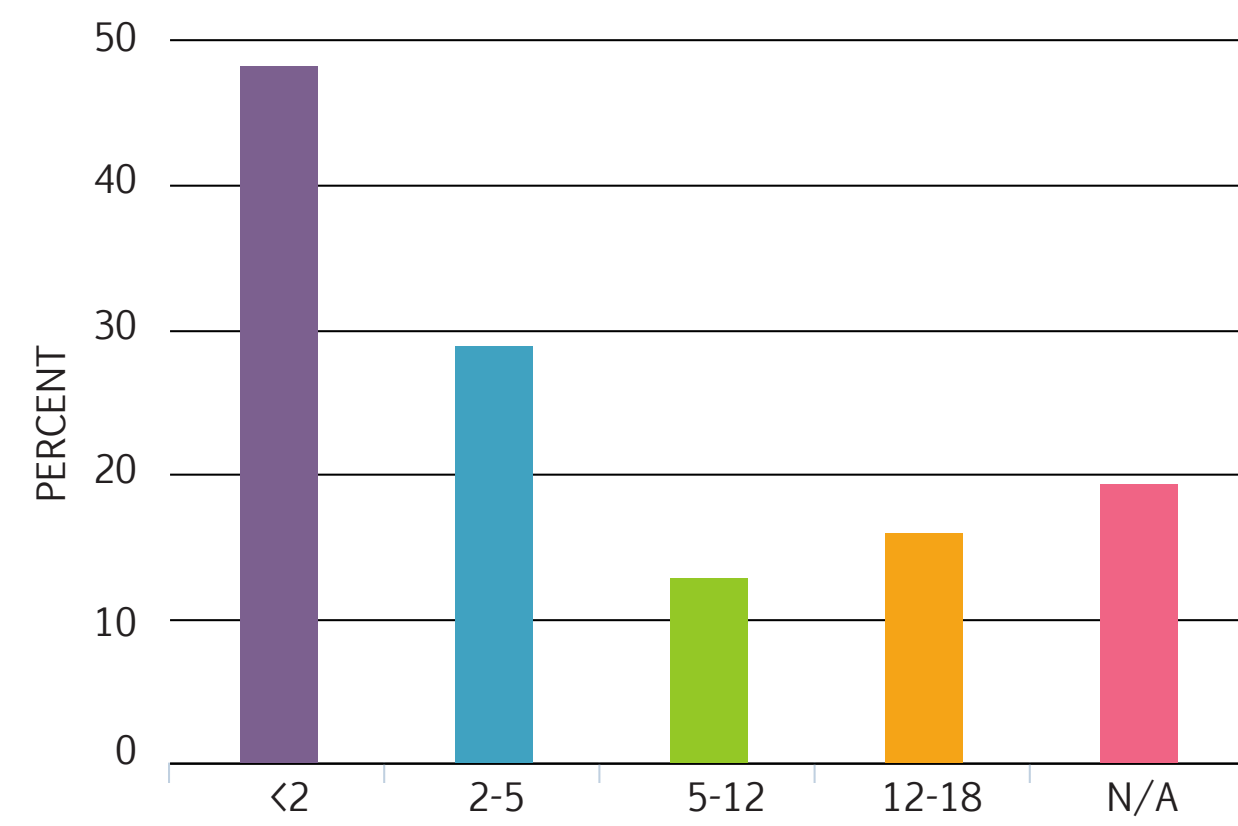
**PLANTING & SEATING**

**PROGRAM INSPIRATION  
FLAHERTY PARK**



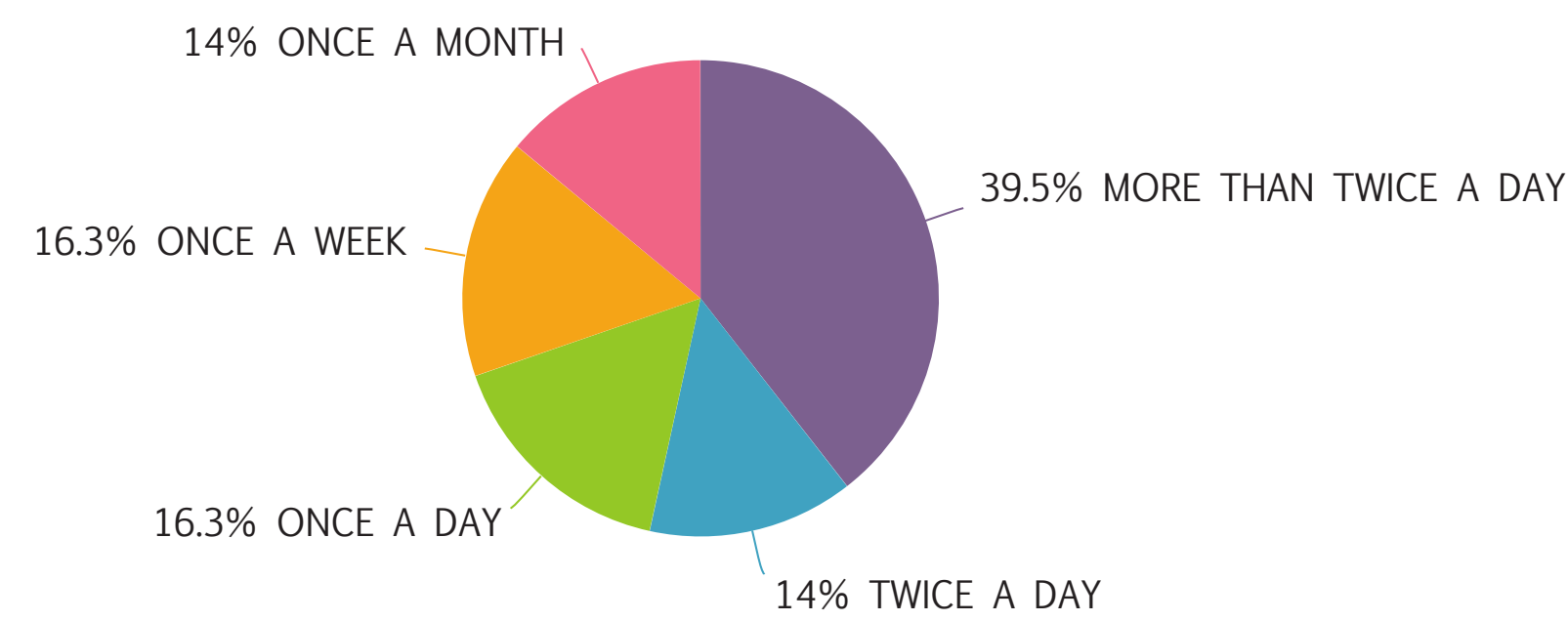
## CHILDREN IN FLAHERTY PARK

ABOUT 60% OF PEOPLE WHO TOOK THE SURVEY HAVE CHILDREN LIVING AT HOME, AND THE MAJORITY OF THEIR CHILDREN ARE UNDER 5 YEARS OLD.



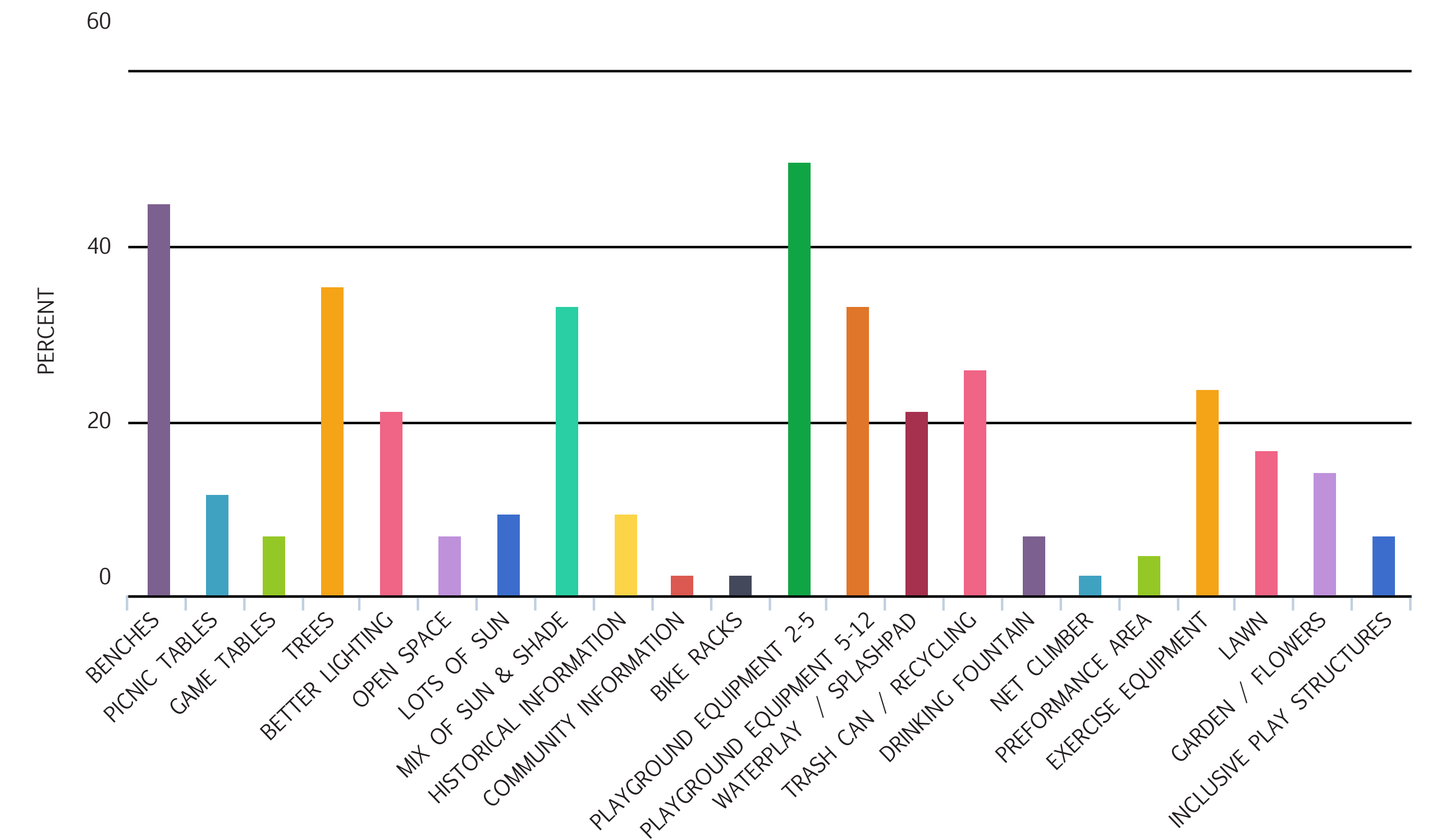
## HOW OFTEN DO YOU PASS BY FLAHERTY PARK?

FROM THE SURVEY RESULTS PEOPLE SEEM TO PASS BY THE PARK OFTEN. 80+% OF THE RESULTS SHOWED THAT PEOPLE PASS THE PARK AT LEAST ONCE A WEEK AND ALMOST 40% PASS THE PARK MORE THAN TWICE A DAY.



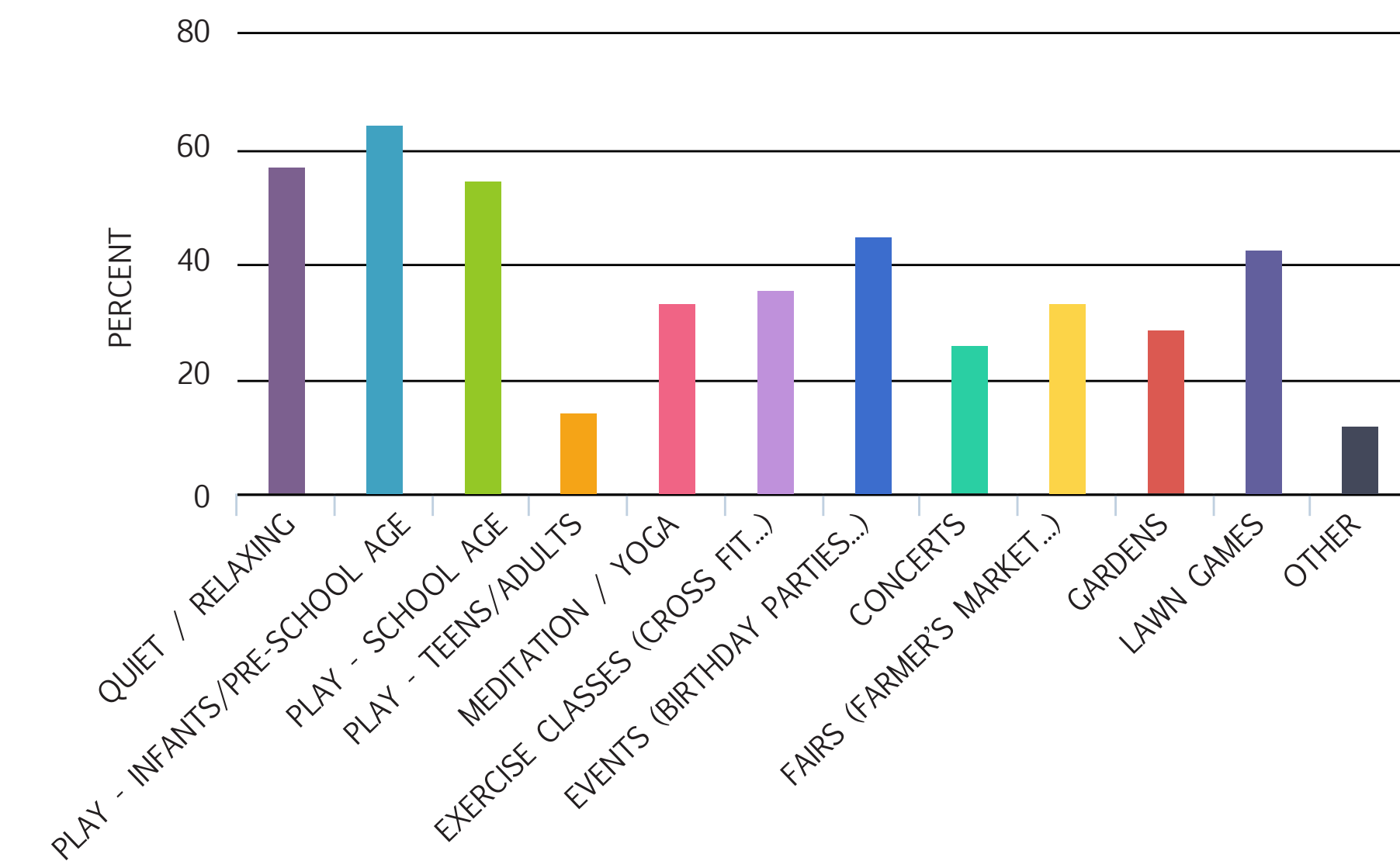
## AMENITIES PEOPLE WOULD LIKE TO SEE

IMPORTANT AMENITIES THAT PEOPLE CHECKED MOST INCLUDED BENCHES, PLAY EQUIPMENT FOR AGES 2-5 AND 5-12, AND TREES. THE PARK CURRENTLY MEETS THIS CRITERIA BUT FROM THE GENERAL COMMENTS ABOUT THE PARK MANY PEOPLE BELIEVE THAT IT NEEDS AN UPDATE.



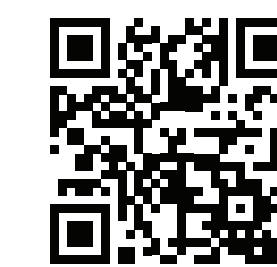
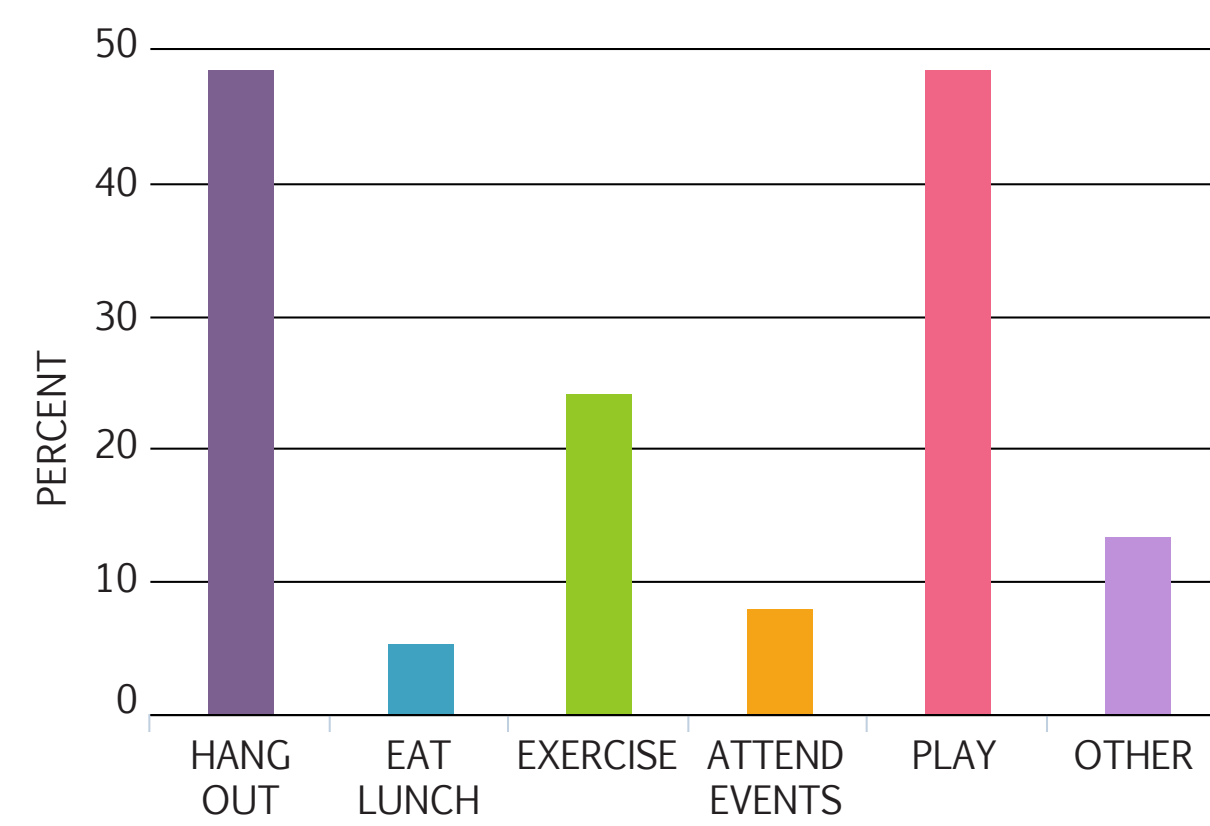
## EXPERIENCES THAT THE PARK COULD OFFER

MOST OF THE EXPERIENCES THAT PEOPLE WOULD LIKE TO HAVE IN THE PARK ARE PLAY FOR KIDS UNDER 12 AND THE OPPORTUNITY FOR QUIET AND RELAXATION. THERE IS ALSO SOME INTEREST IN THE ABILITY FOR DIFFERENT EVENTS AND CLASSES.



## WHAT DO YOU DO AT THE PARK?

MOST PEOPLE WHO GO TO THE PARK USE IT FOR PLAY AND FOR HANGING OUT. THE "OTHER" ANSWERS THAT WERE WRITTEN IN CONSISTENTLY INCLUDED PLAY WITH GRANDCHILDREN AS WELL AS HANGING OUT AND RELAXING.



THE SURVEY IS STILL OPEN, LET US KNOW WHAT YOU WANT TO SEE!

<http://www.surveymzmo.com/s3/3349219/Flaherty-Park>

