

*Improvements to*  
**WESTLAND AVENUE**  
**GATEWAY**  
**BACK BAY FENS**



**B**

March 20, 2017  
Boston Parks and Recreation



# AGENDA

---

1

**PROJECT TEAM INTRODUCTION**

---

2

**PROJECT OVERVIEW**

---

3

**PRESENTATION**

---

4

**LISTENING & DISCUSSION**

---

5

**CLOSING REMARKS & NEXT STEPS**

---

# PROJECT TEAM

---

## **Cathy Baker-Eclipse**

Project Manager

[Cathy.Baker-Eclipse@boston.gov](mailto:Cathy.Baker-Eclipse@boston.gov) or 617-961-3058

## **Margaret Dyson**

Director of Historic Parks

[Margaret.Dyson@boston.gov](mailto:Margaret.Dyson@boston.gov) or 617-961-3028

## **Marchelle Jacques-Yarde**

Outreach Coordinator, External Affairs

[marchelle.jacques-yarde@boston.gov](mailto:marchelle.jacques-yarde@boston.gov) or 617-961-3006

## **Skip Burck**

Principal, Richard Burck Associates

## **Sam Valentine**

Project Manager, Richard Burck Associates

## **Jacob Wessel**

Office of Neighborhood Services

[Jacob.Wessel@boston.gov](mailto:Jacob.Wessel@boston.gov) or 617-635-2679



# DESIGN TEAM

---

## **Project Lead / Landscape Architect**

Richard Burck Associates, Somerville, MA

Richard “Skip” Burck, RLA, FASLA, FAAR  
*Principal*

Sam Valentine, RLA, LEED AP  
*Project Manager*



## **Stone Conservator**

Building & Monument Conservation, Arlington, MA

Ivan Myjer





# PROJECT OVERVIEW

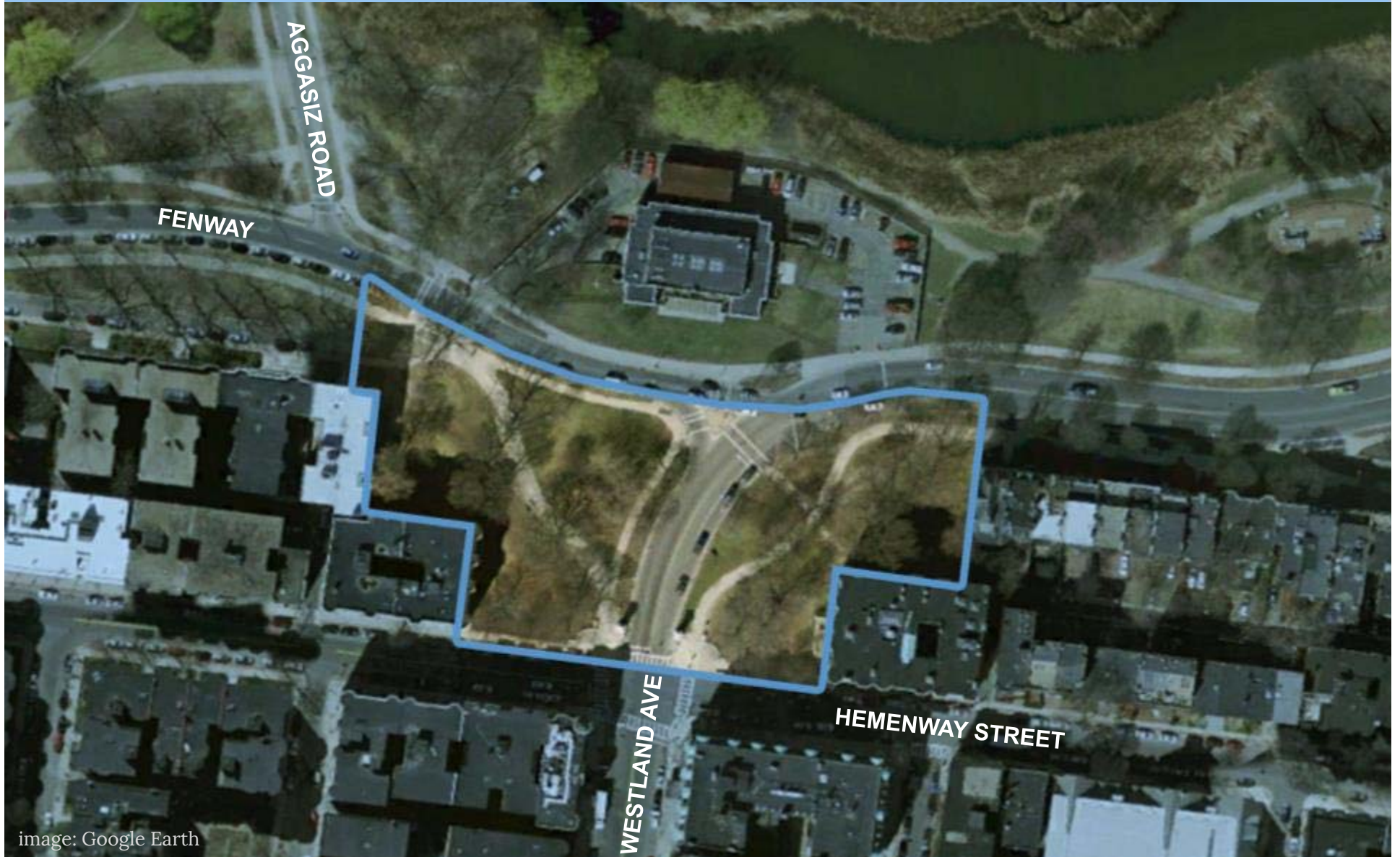
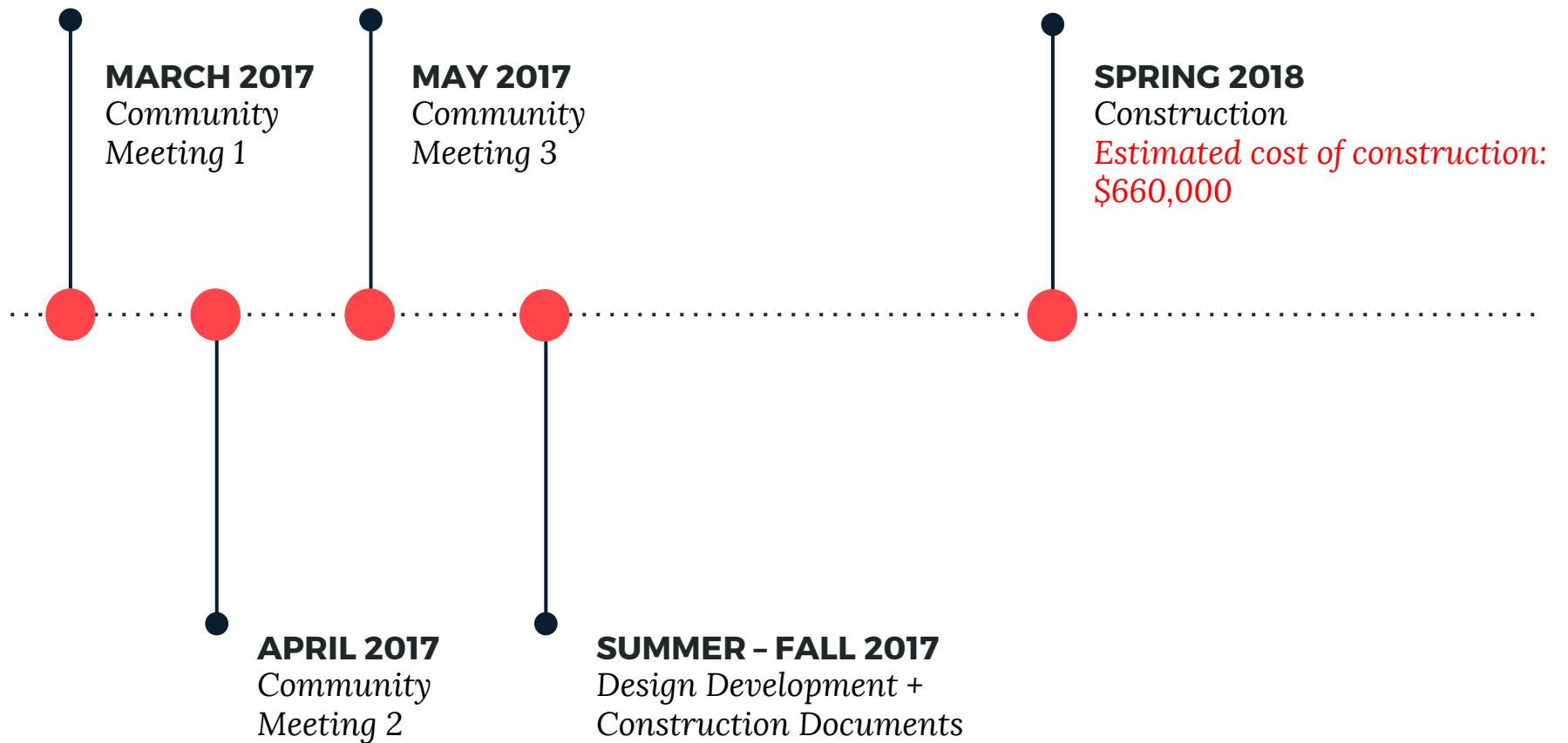


image: Google Earth

# PROJECT SCHEDULE & FUNDING





# PARK & RECREATION GOALS

- **Preserve and protect existing trees**
- **Expand usable park area**
- **Improve universal access**
- **Enhance park visibility**
- **Improve park access**
- **Design flexible, multi-functional park spaces**





City of Boston  
Initiatives

Safety Guidelines+  
Environmental  
Regulations

**PARK  
DESIGN**

Parks + Recreation  
Goals

Community  
Input



# SITE HISTORY

# SITE HISTORY

---





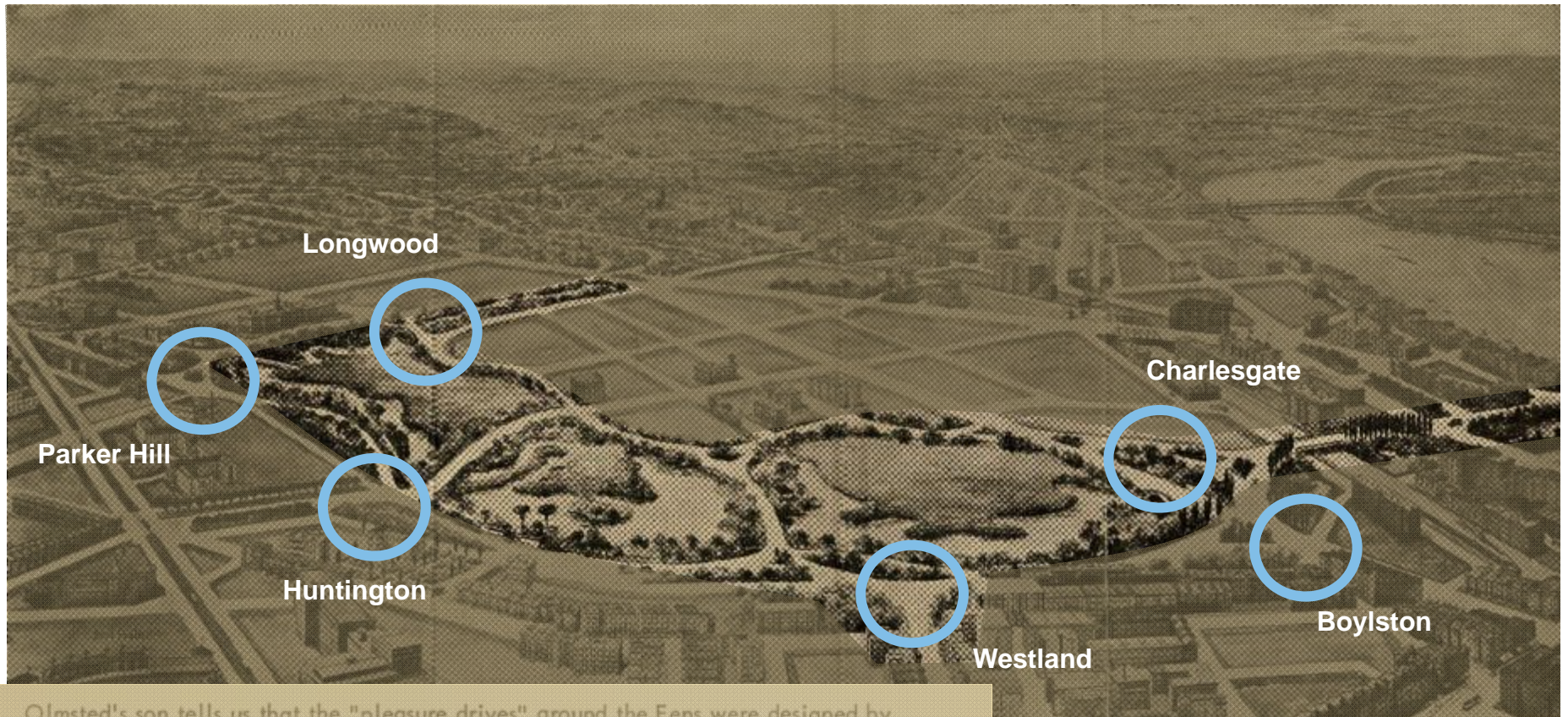
# SITE HISTORY



image: Detroit Publishing Co. circa 1910/1920



# SITE HISTORY



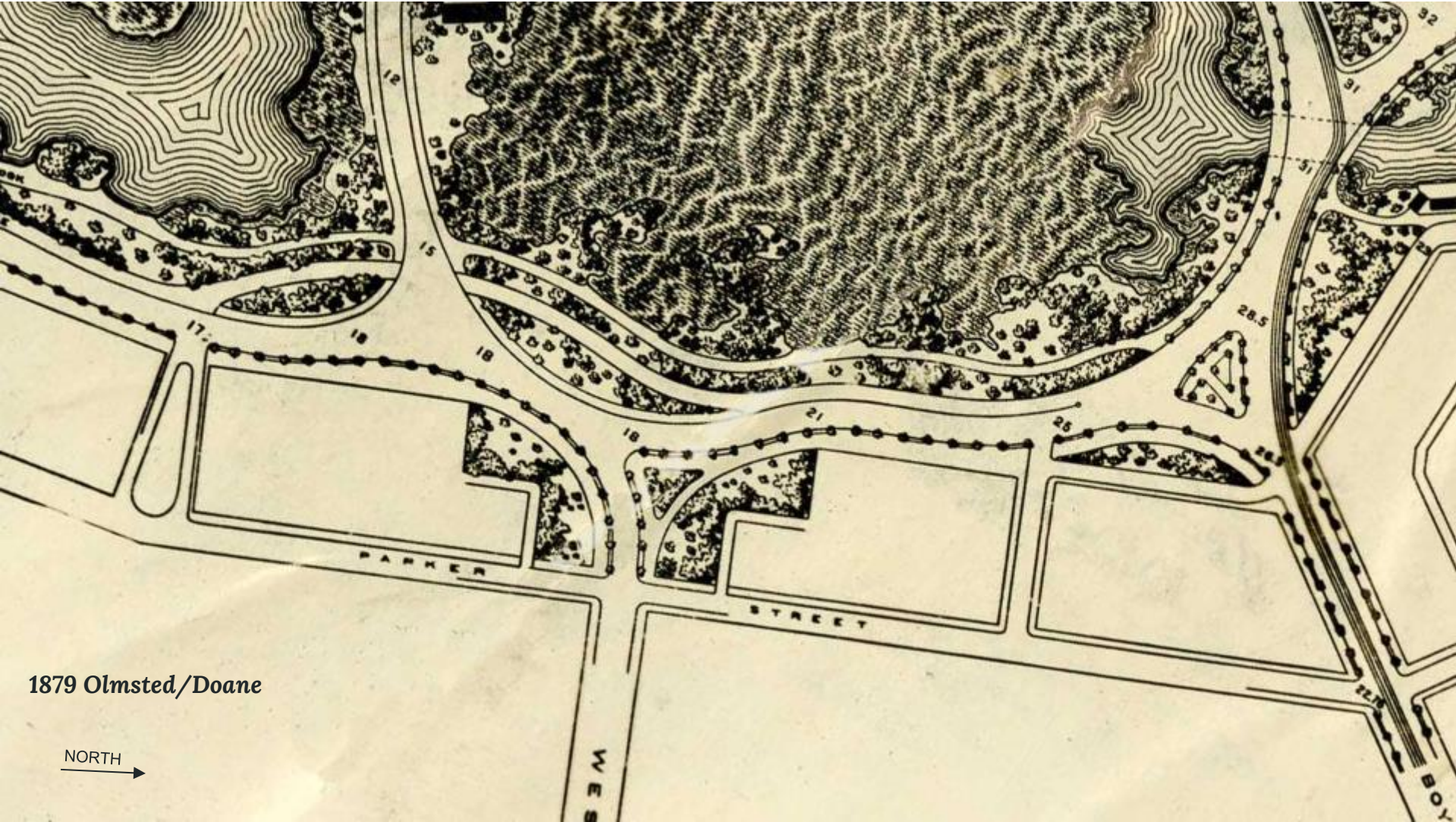
Olmsted's son tells us that the "pleasure drives" around the Fens were designed by one Thomas Doane, an engineer employed by the Park Commission before Olmsted was called in, and designed mainly "to suit the requirements and whims of the owners of the land then about to be purchased."<sup>5</sup> "As originally designed, the park and its water way were crossed by bridges carrying Beacon Street, Commonwealth Avenue, the Boston and Albany Railroad, and Agassiz Road. There were six entrances: the arm called the Charlesgate linked to the river; the Boylston and Westland entrances from the east; the Huntington entrance from the southeast; the Parker Hill or Tremont entrance from the southwest; and the Longwood entrance at the western end..."<sup>6</sup> The roadways carrying Boylston Street and Agassiz Road were built across bridges designed in 1882 and 1888 by the distinguished architect, H.H. Richardson, who often collaborated with Olmsted.

sources: L - *Design on the Land*, Norman T. Newton, p293  
R - Courtesy of the National Park Service, Frederick Law Olmsted National Historic Site



# SITE HISTORY

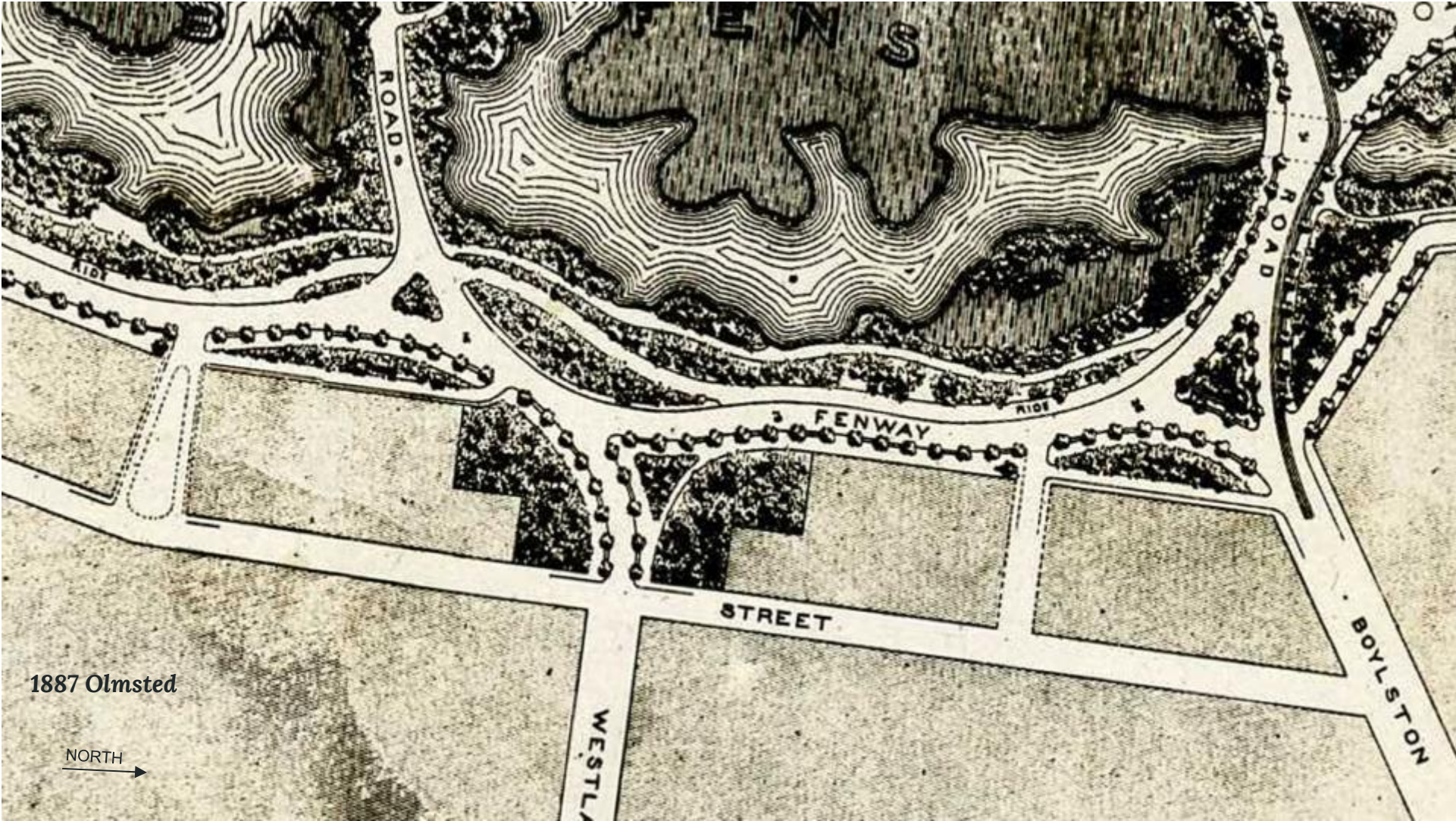
---





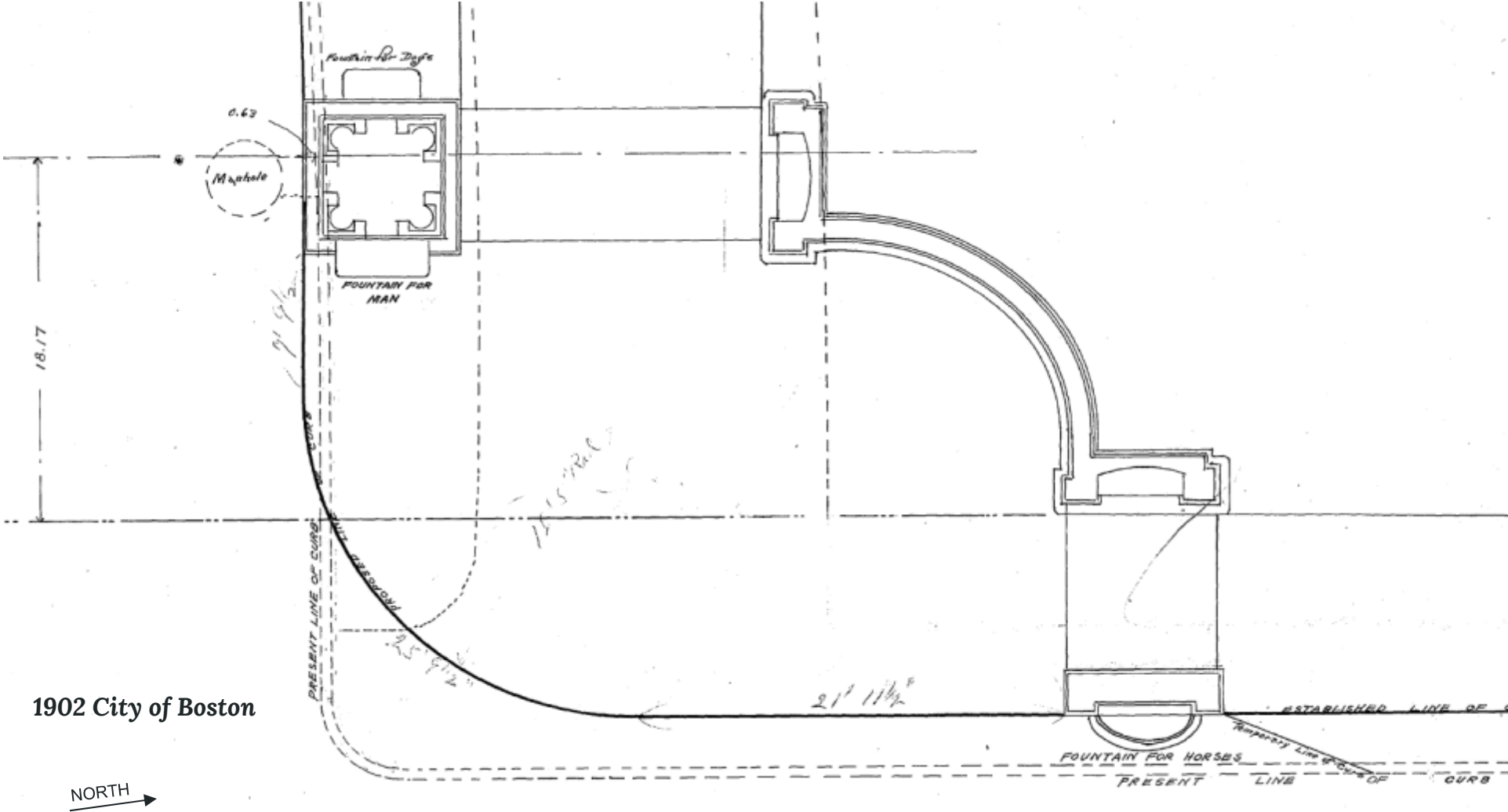
# SITE HISTORY

---





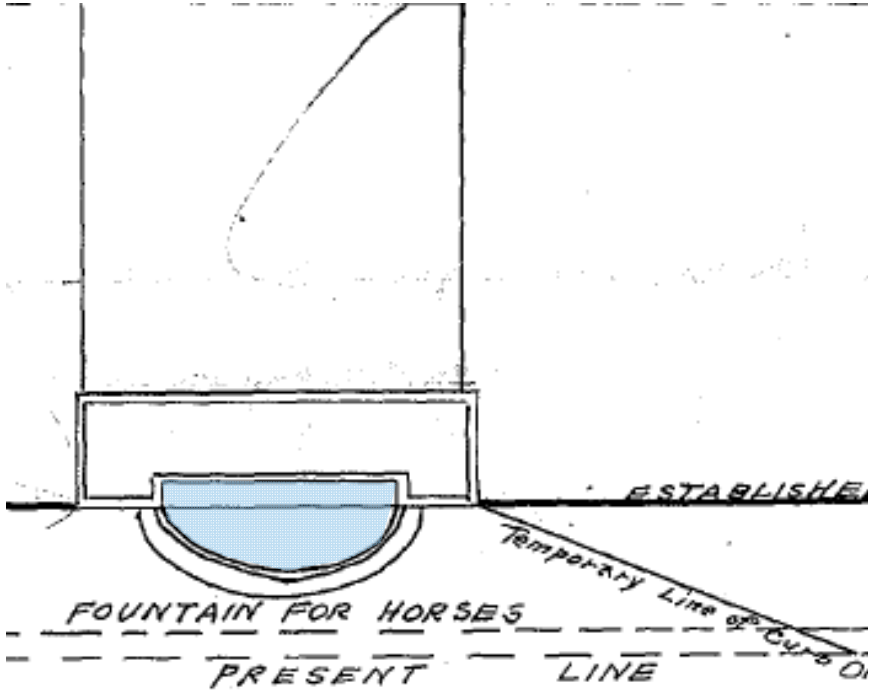
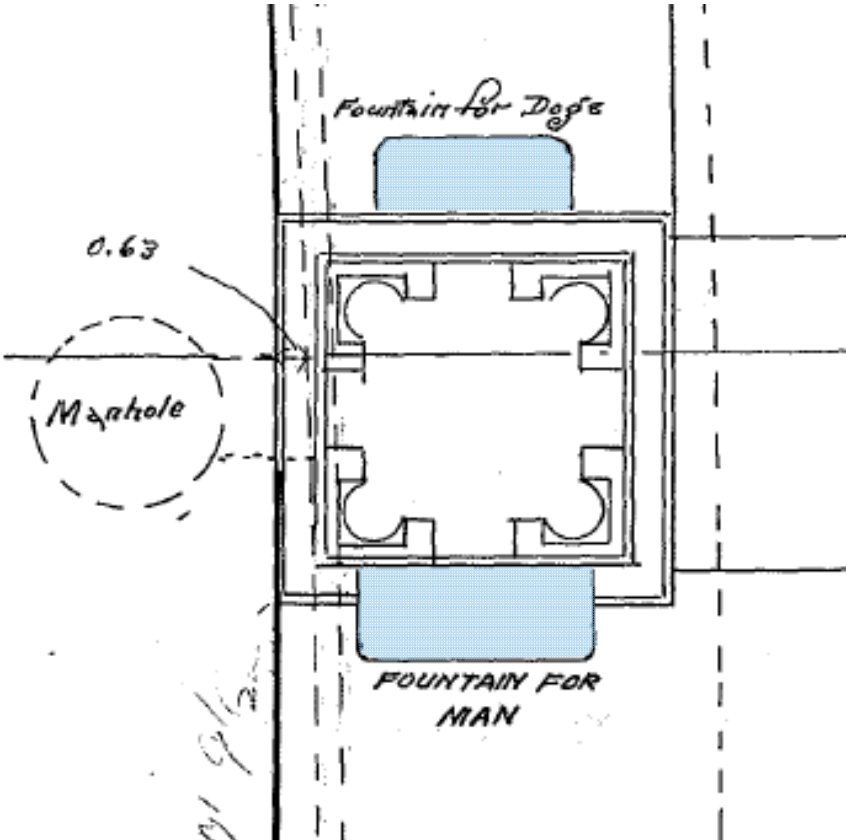
# SITE HISTORY



1902 City of Boston

NORTH →

# SITE HISTORY

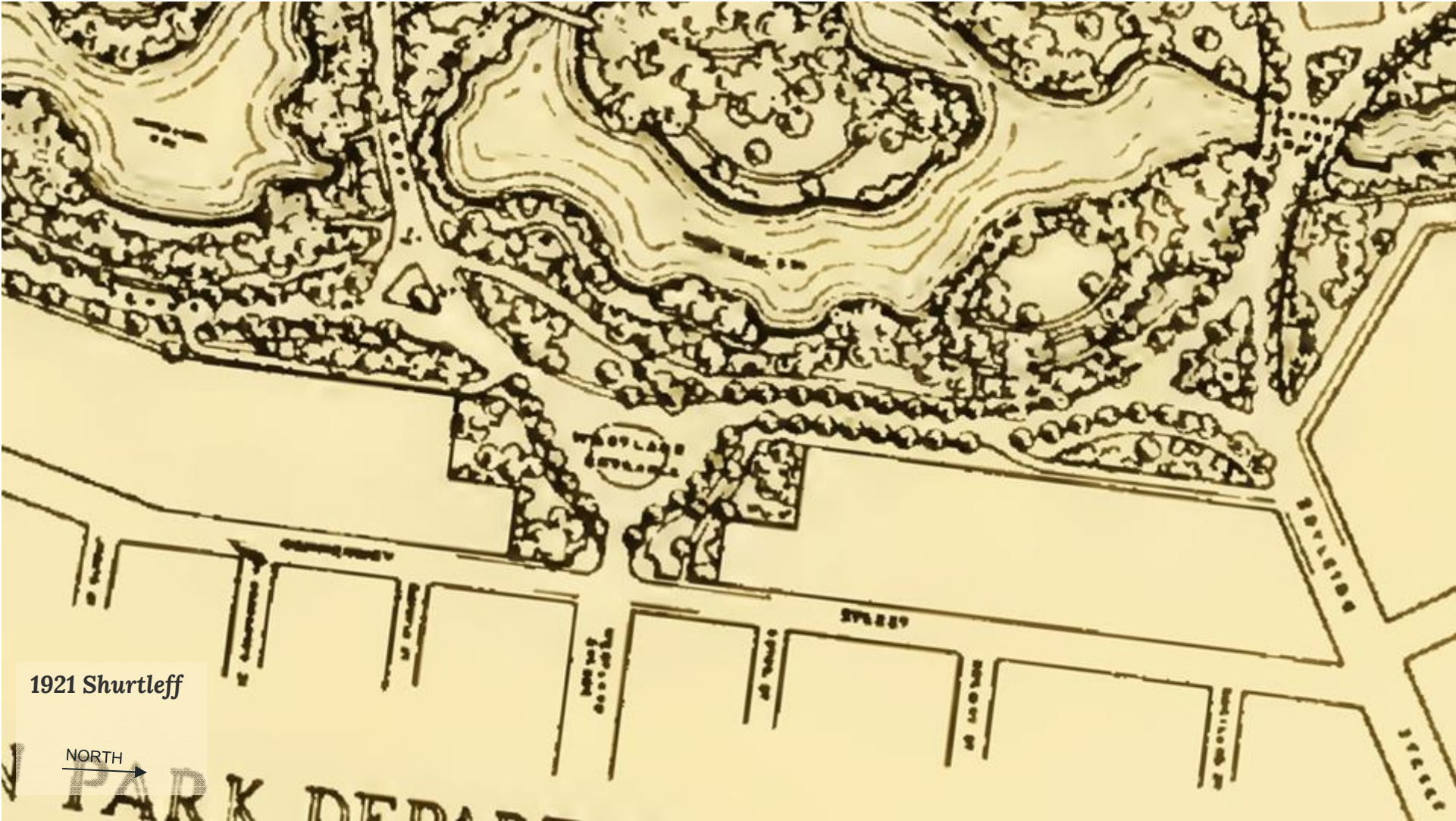


1902 City of Boston

NORTH →

# SITE HISTORY

---





# SITE HISTORY





# SITE HISTORY

---



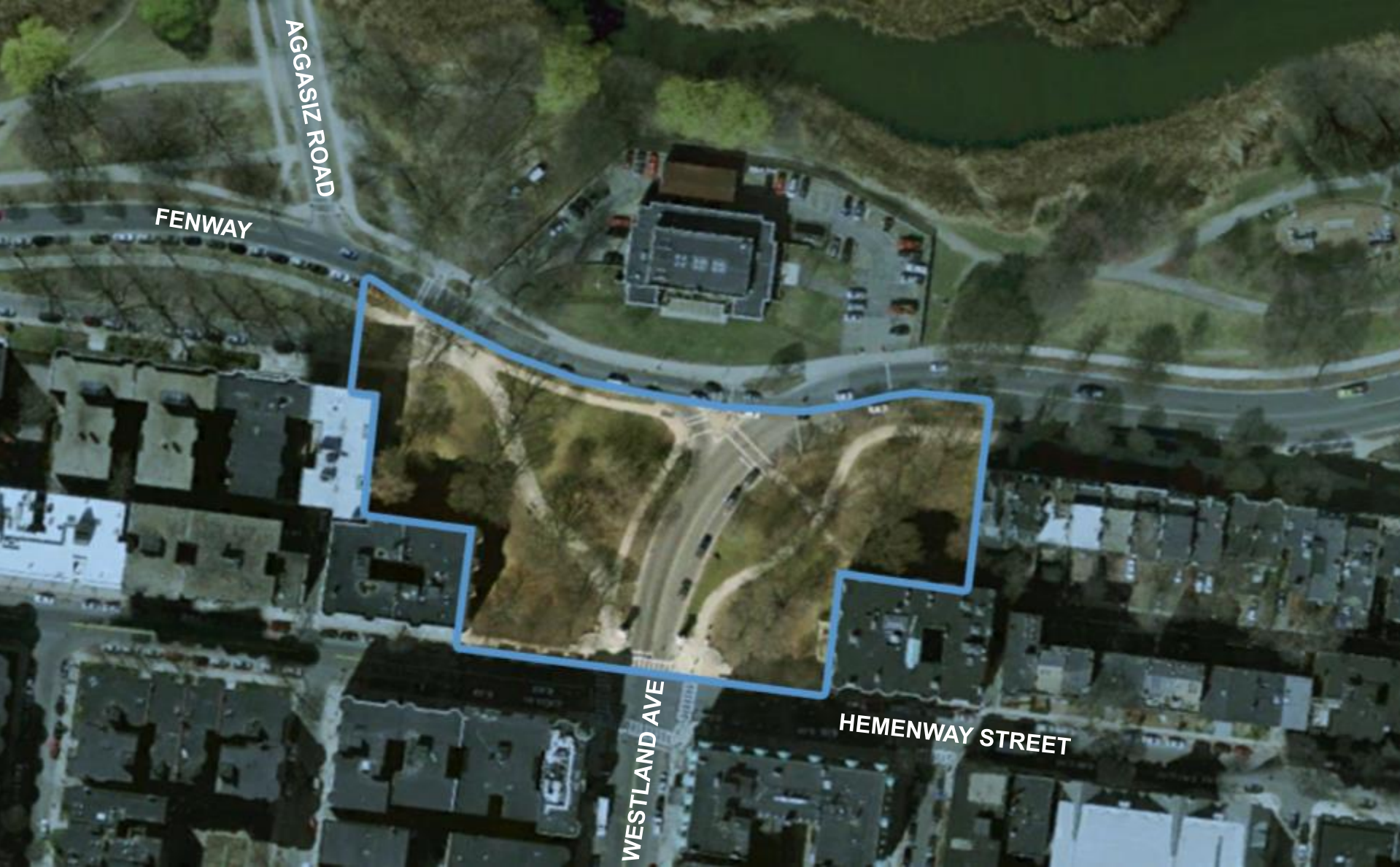
image: Google Earth

# PROJECT OVERVIEW



# LIMITS OF SITE

---



# PROJECT GOALS

---

The scope of the design work includes:

- the **conservation of the Johnson Gates**, associated walls, stone work, and horse troughs on Hemenway Street
- the historic study and possible re-alignment of the **pathway systems** in the study area, with particular focus on accessibility
- **fencing** repair or replacement, and
- evaluation and restoration of the **lawn areas and trees** within the defined scope of work

# CONSERVATION OF THE JOHNSON GATES

## Conditions Assessment and Treatment Recommendations for the Masonry Components of the Johnson Gates Boston



Completed for:  
Ms. Marie Fukuda  
Fenway Civic Association, Inc.  
Box 230435, Astor Station  
Boston, MA 02123

Completed by:  
Ivan Myjer  
Lead Conservator  
Building and Monument Conservation  
83 School Street  
Arlington, Ma 02476  
617 834-3908  
myjer.ivan@rmc.com

December 6, 2013

## Johnson Gates- North and South Piers Construction

The upper section of the piers consists of an enormous cap stone set on top of the cornice which consists of small units. The entablature stone under the bronze work is a single unit of stone.

The mortar joints in the two courses of the cornice are completely open. The entablature stone on each pier is cracked in several locations but the cracks are not structural.



Building and Monument Conservation

ii

## South Trough

View of interior of south trough with dutchman repair.

Exterior view of the same dutchman repair which is now damaged from impact.



Building and Monument Conservation

iii



## **PATH/ACCESSIBILITY UPGRADES**

---

The scope of the design work includes:

- accessibility review
- historic plans
- current desire lines
- anticipating future use
- multimodal needs

# ACCESSIBILITY REVIEW

---



# DESIRE LINES

---



image: Google Earth



# DESIRE LINES

---



image: Google Earth



# DESIRE LINES

---





# DESIRE LINES

---





# FENCING

---



# MULTIMODAL DESIGN

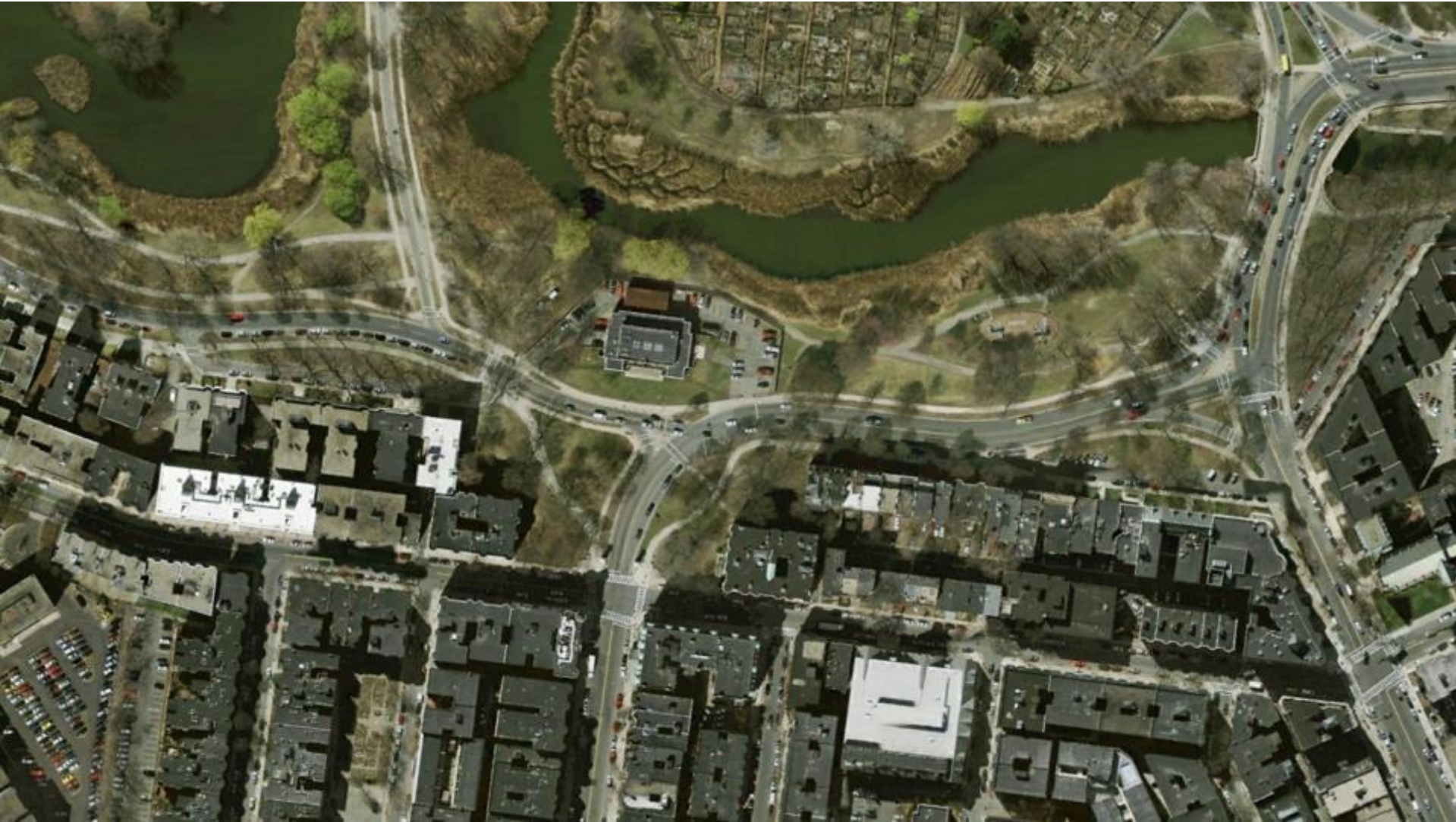
---





# MULTIMODAL DESIGN

---



# MULTIMODAL DESIGN

---

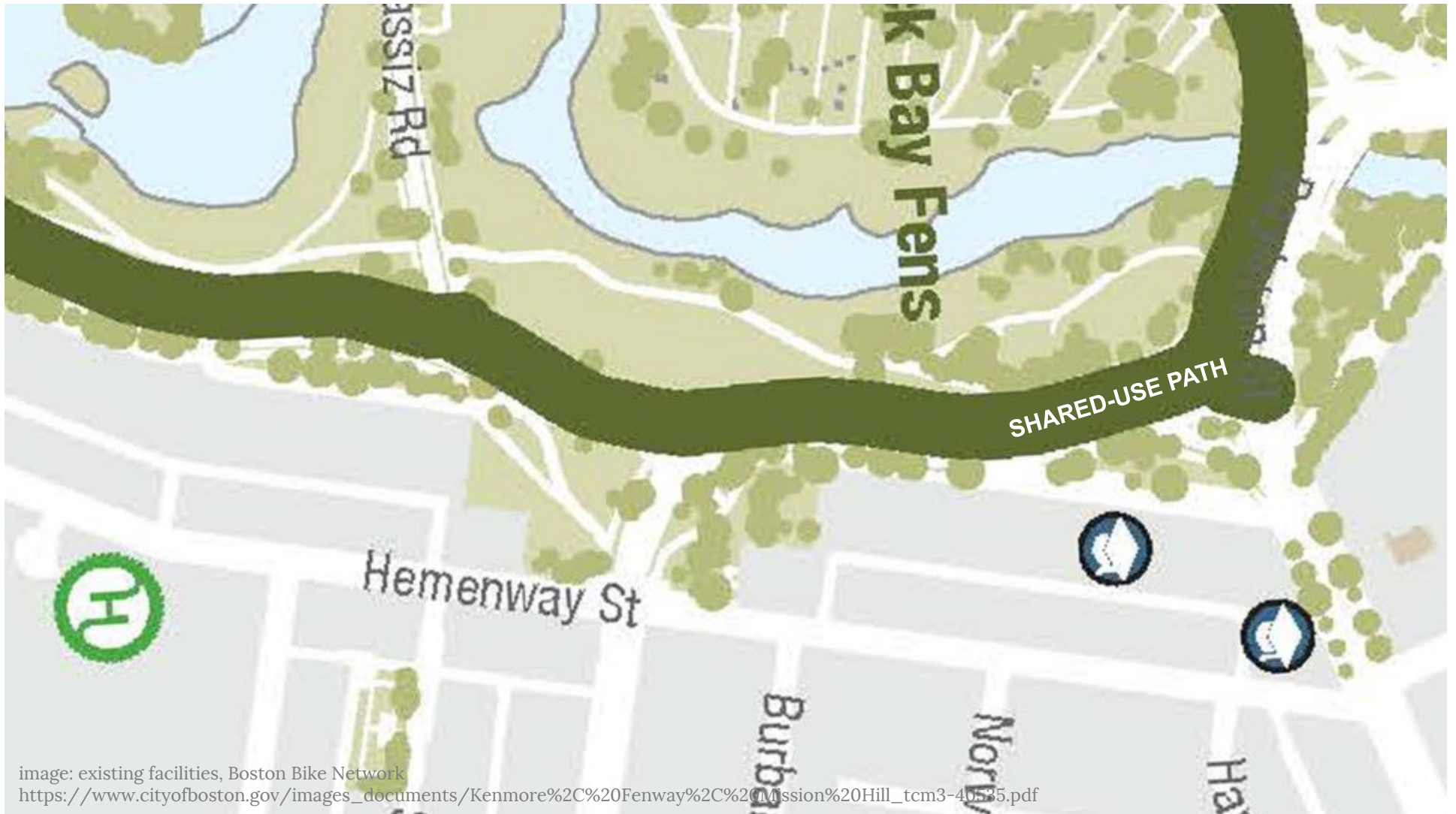


image: existing facilities, Boston Bike Network  
[https://www.cityofboston.gov/images\\_documents/Kenmore%2C%20Fenway%2C%20Mission%20Hill\\_tcm3-40535.pdf](https://www.cityofboston.gov/images_documents/Kenmore%2C%20Fenway%2C%20Mission%20Hill_tcm3-40535.pdf)



# MULTIMODAL DESIGN

---

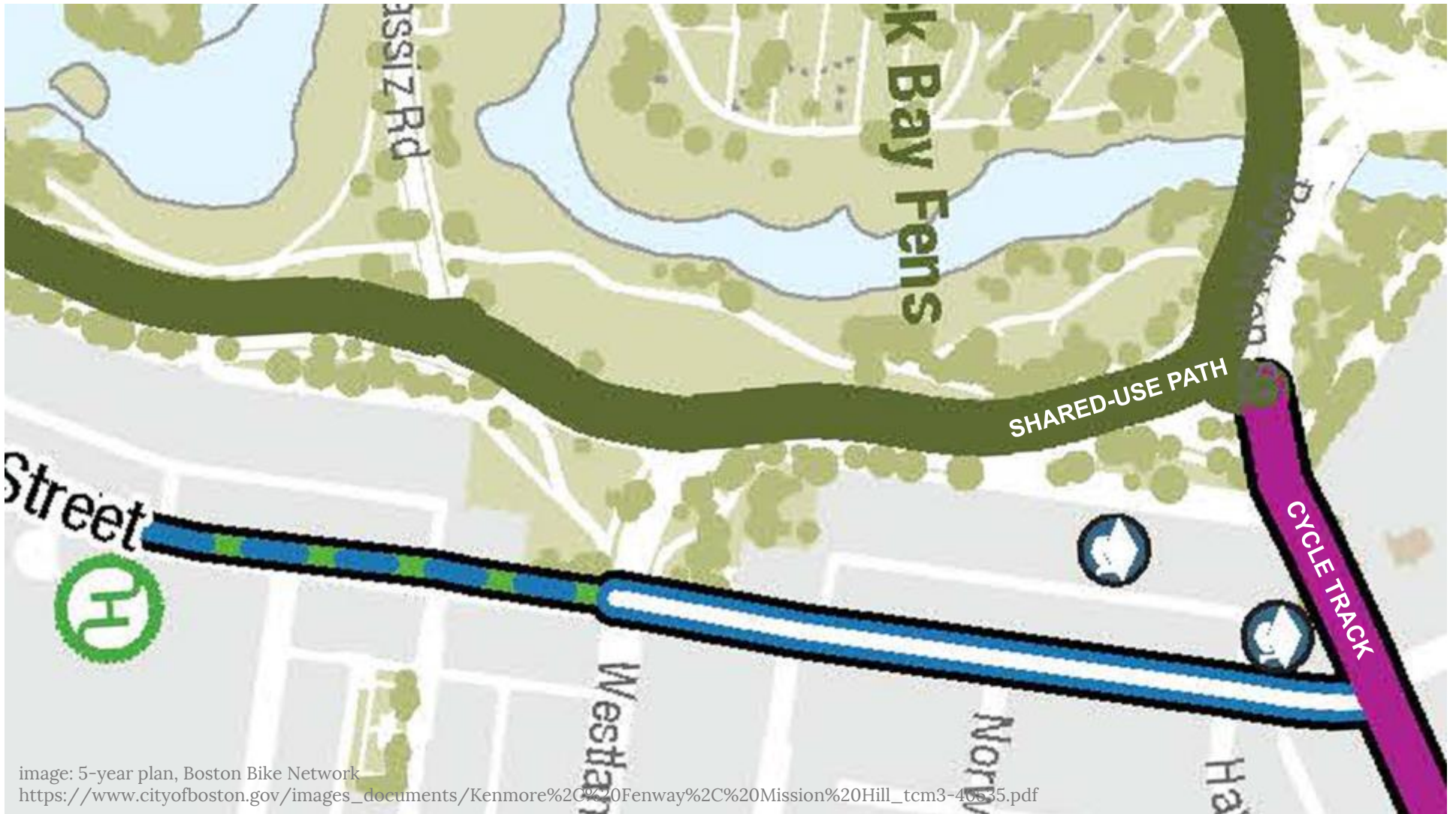


image: 5-year plan, Boston Bike Network  
[https://www.cityofboston.gov/images\\_documents/Kenmore%2C%20Fenway%2C%20Mission%20Hill\\_tcm3-40535.pdf](https://www.cityofboston.gov/images_documents/Kenmore%2C%20Fenway%2C%20Mission%20Hill_tcm3-40535.pdf)

# MULTIMODAL DESIGN

---

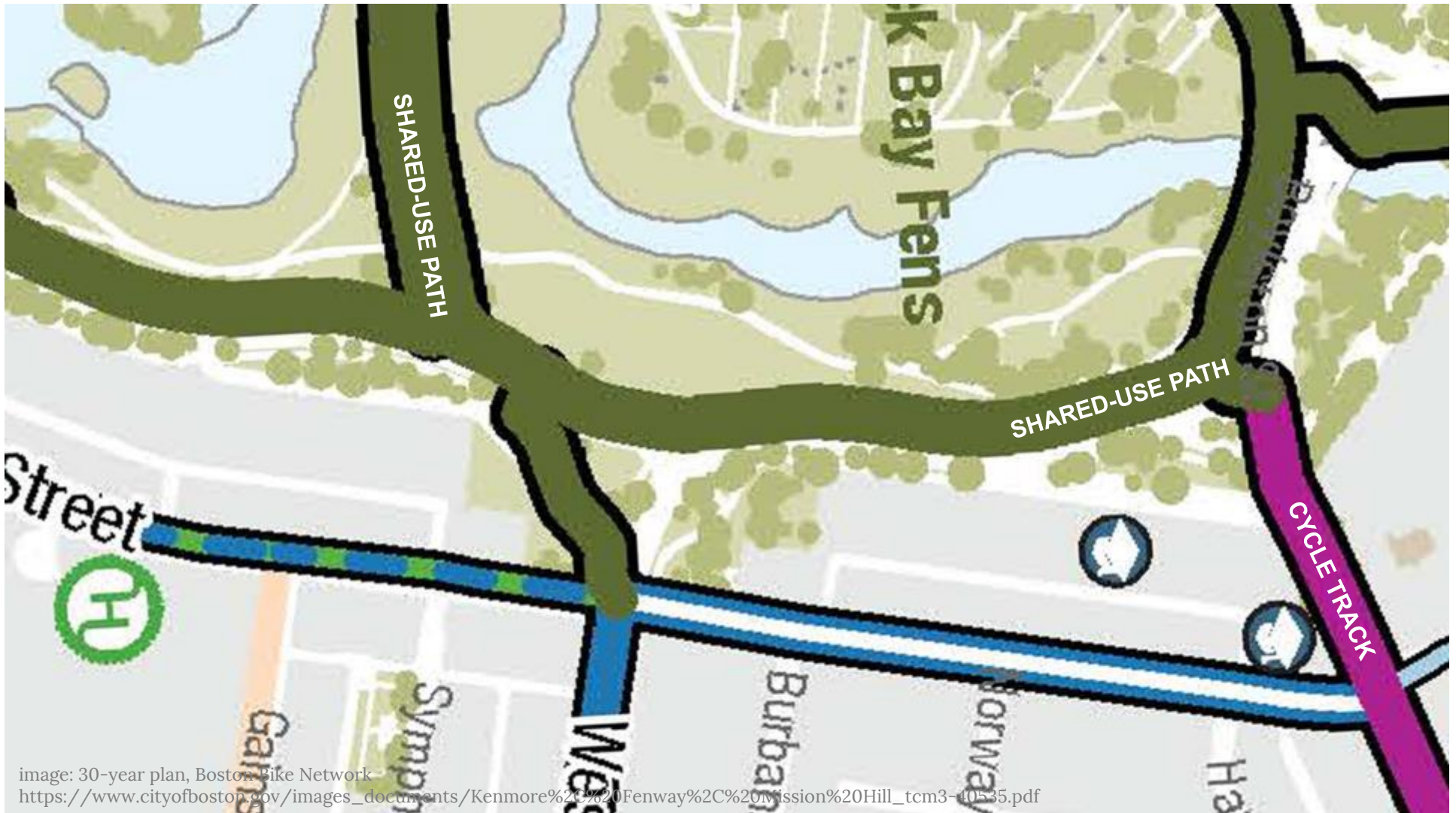


image: 30-year plan, Boston Bike Network  
[https://www.cityofboston.gov/images\\_documents/Kenmore%2C%20Fenway%2C%20Mission%20Hill\\_tcm3-40535.pdf](https://www.cityofboston.gov/images_documents/Kenmore%2C%20Fenway%2C%20Mission%20Hill_tcm3-40535.pdf)



# LANDSCAPE RESTORATION - LAWNS

---





# LANDSCAPE RESTORATION - SHRUBS

---





# LANDSCAPE RESTORATION - SHRUBS

---





# LISTENING & DISCUSSION

Help us build great parks.  
Let us know what matters to you.





# THANK YOU!

Cathy Baker-Eclipse, Project Manager  
Cathy.Baker-Eclipse@boston.gov or 617-961-3058

Marchelle Jacques-Yarde, Outreach Coordinator, External Affairs  
marchelle.jacques-yarde@boston.gov or 617-961-3006

Jacob Wessel, Office of Neighborhood Services  
Jacob.Wessel@boston.gov or 617-961-2679

For questions, maintenance requests or concerns regarding any of our parks  
contact 311



March 20, 2017  
Boston Parks and Recreation





# SITE AERIAL

---

