



Ramsay Park

Public Meeting #3
12/6/2016



Project Team

Boston Parks and Recreation

Nathan Frazee, Project Manager

Marchelle Jacques-Yarde, Outreach Coordinator

Stantec

Kevin Beuttell, Designer

Hilary Buskirk, Designer

Meeting Agenda

- Project Recap
 - Budget/Schedule
- Project “Big Picture Goals”
- Project Overview
- Review Input received to date
- Design Alternatives
- Final Proposed Design
- Discussion

Project Overview

Community Meeting Process

- **Meeting #1**
Michael L. Bivins Court Dedication Ceremony
- **Meeting #2**
Design Alternatives
- **Meeting #3**
Review Final Proposed Design

Construction Schedule (Estimated)

- Design: Fall – Winter 2016
- Construction Start: Spring 2017
- Construction Timeline: Approximately 9 months

Budget from Capital Funds

- Estimated Construction Cost: \$1,630,000

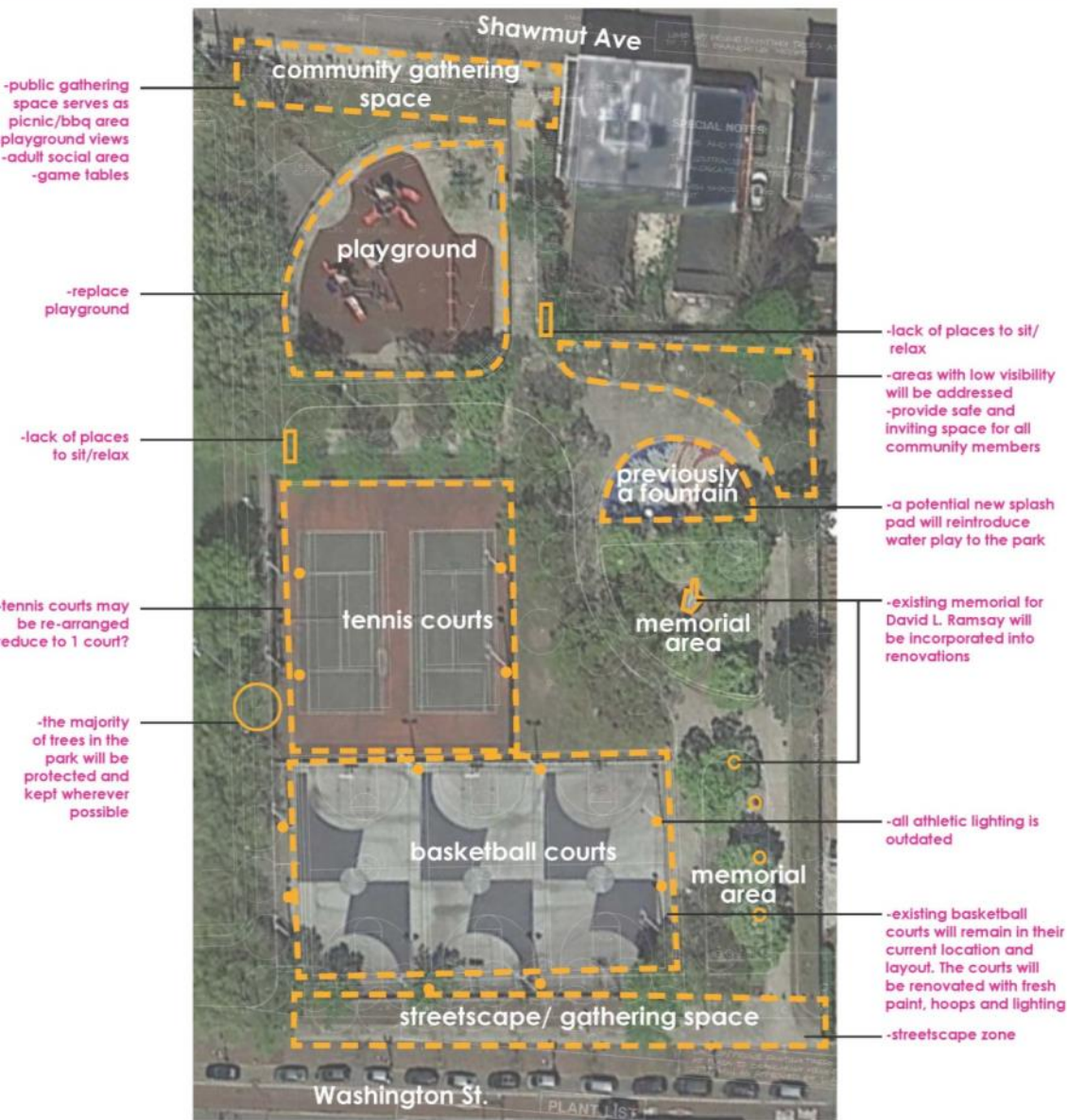
Park Renovation Focus Area



Big Picture Goals

- Preserve and Protect Existing Trees
- Expand Usable Park Area
- Improve Handicap Access
- Enhance Park Visibility
- Improve the Look of Park Entries
- Design Flexible, Multi-Functional Park Spaces

RAMSAY PARK - Site Analysis



existing park plan

Open Spaces Near Ramsay Park



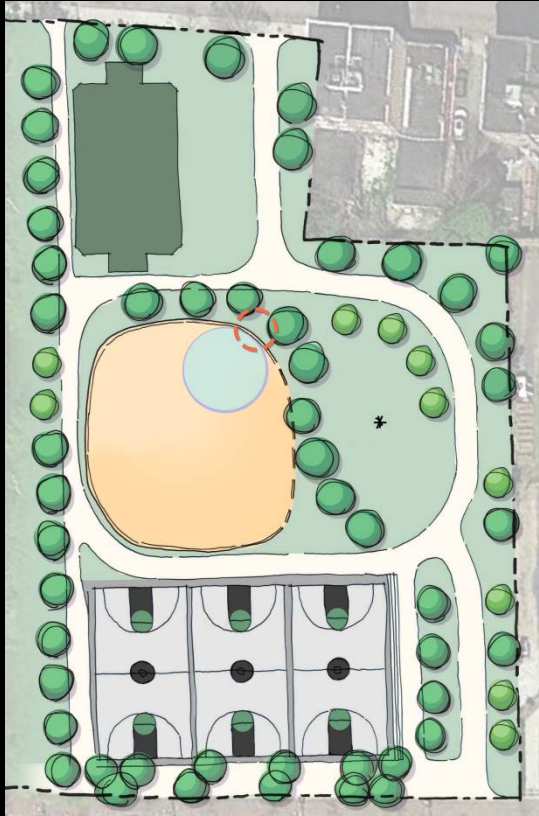
park amenities within 1/2 mile of Ramsay

- Jeep Jones Park** SPORTS FACILITY, 2 BASKETBALL COURTS, FITNESS STATION, PLAYGROUND, PLAY STRUCTURE, TOT SPRAY AREA, PUBLIC ART
- Madison Park** SPORTS FACILITY, MULTI-USE SPACE, BASKETBALL COURTS, TENNIS COURTS, BASEBALL, BATTING CAGE, TRACK AND FIELD, PUBLIC ART
- Carter Playground** SPORTS FACILITY, MULTI-USE SPACE, 5 TENNIS COURTS, PLAYGROUND, PLAY STRUCTURE, TOT SPRAY AREA
- O'Day Playground** SPORTS FACILITY, STREET HOCKEY, 1 BASKETBALL COURTS, PLAYGROUND, PLAY STRUCTURE, SWINGS, TOT SPRAY AREA, STAGE/AMPHITHEATER
- Edna V Bynoe Park** PLAYGROUND, PLAY STRUCTURE, SWINGS, TOT SPRAY AREA, SPORTS FACILITY, 3 BASKETBALL COURTS, 1 TENNIS COURT, LITTLE LEAGUE

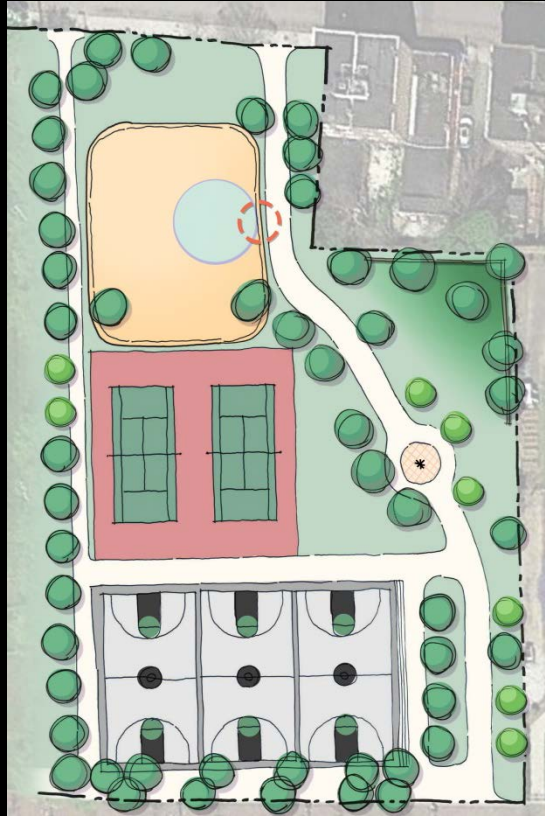
Public Comment Summary:

- Replace 1 tennis court with a multi-use court
- Interest in a rope climber play structure
- Accommodate as many users (age ranges) as possible
- Lighting is needed for safety
- Community gathering space should be provided to meet the current uses along the northern edge of the park for barbequing, socializing, etc.
- Basketball courts are an active and highly utilized part of the park
- The playground equipment is old and run-down - new and updated play equipment is needed.
- Visibility is an issue that need to be addressed by opening up viewsheds to help reduce undesirable activities within the park
- Seating needs to be reintroduced
- Incorporate memorial into future design
- The spatial organization of the park is not efficient

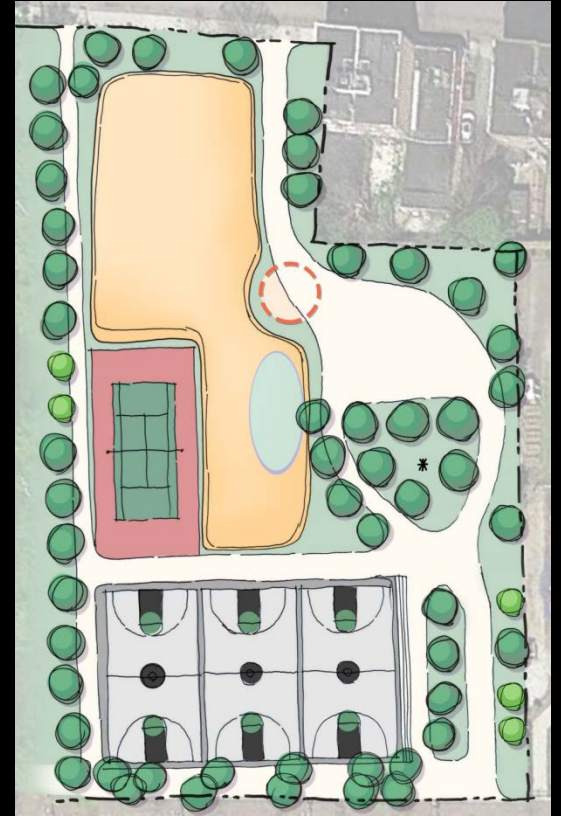
Design Alternatives



Concept A



Concept B



Concept C

Final Proposed Design

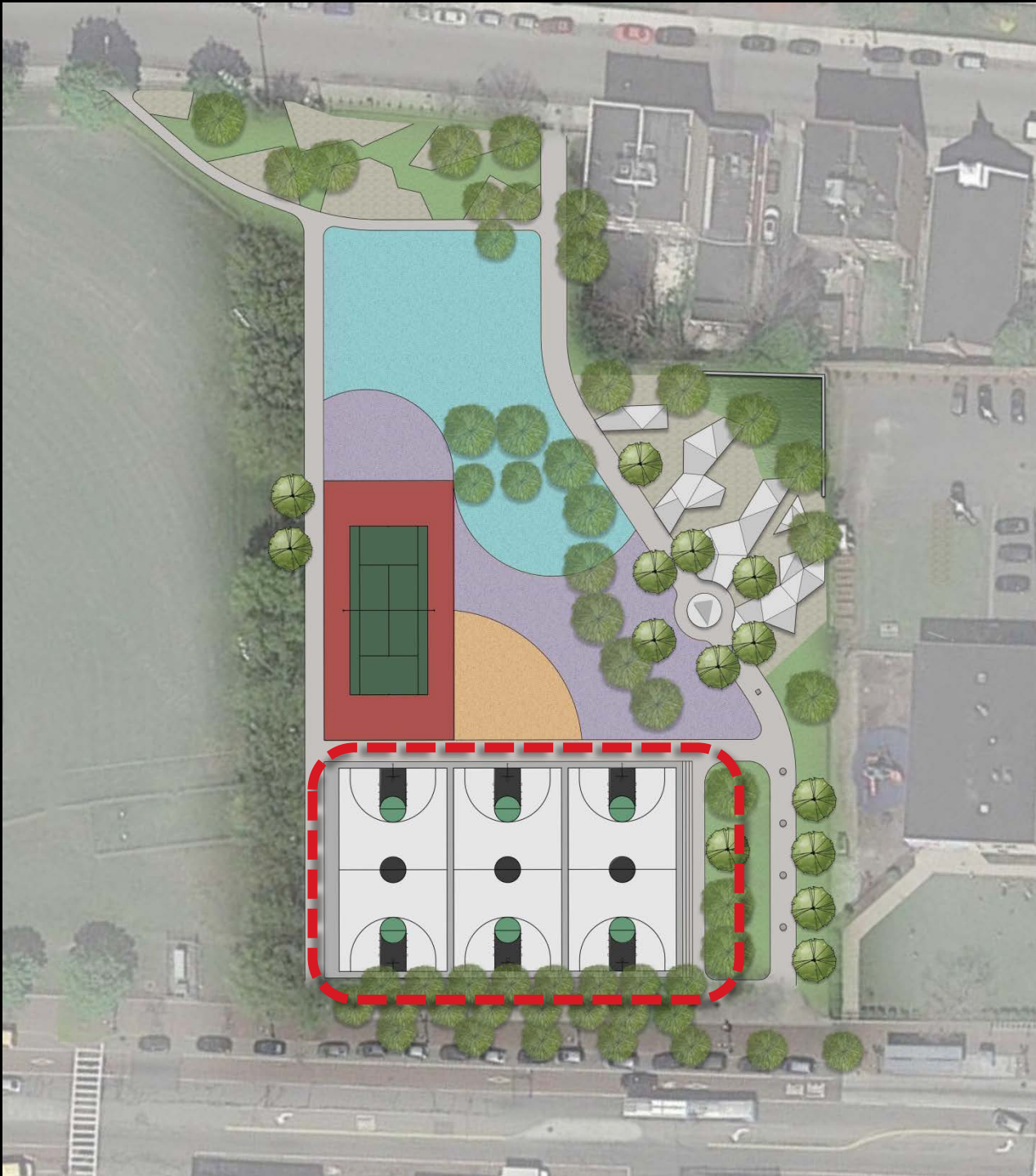
A



B

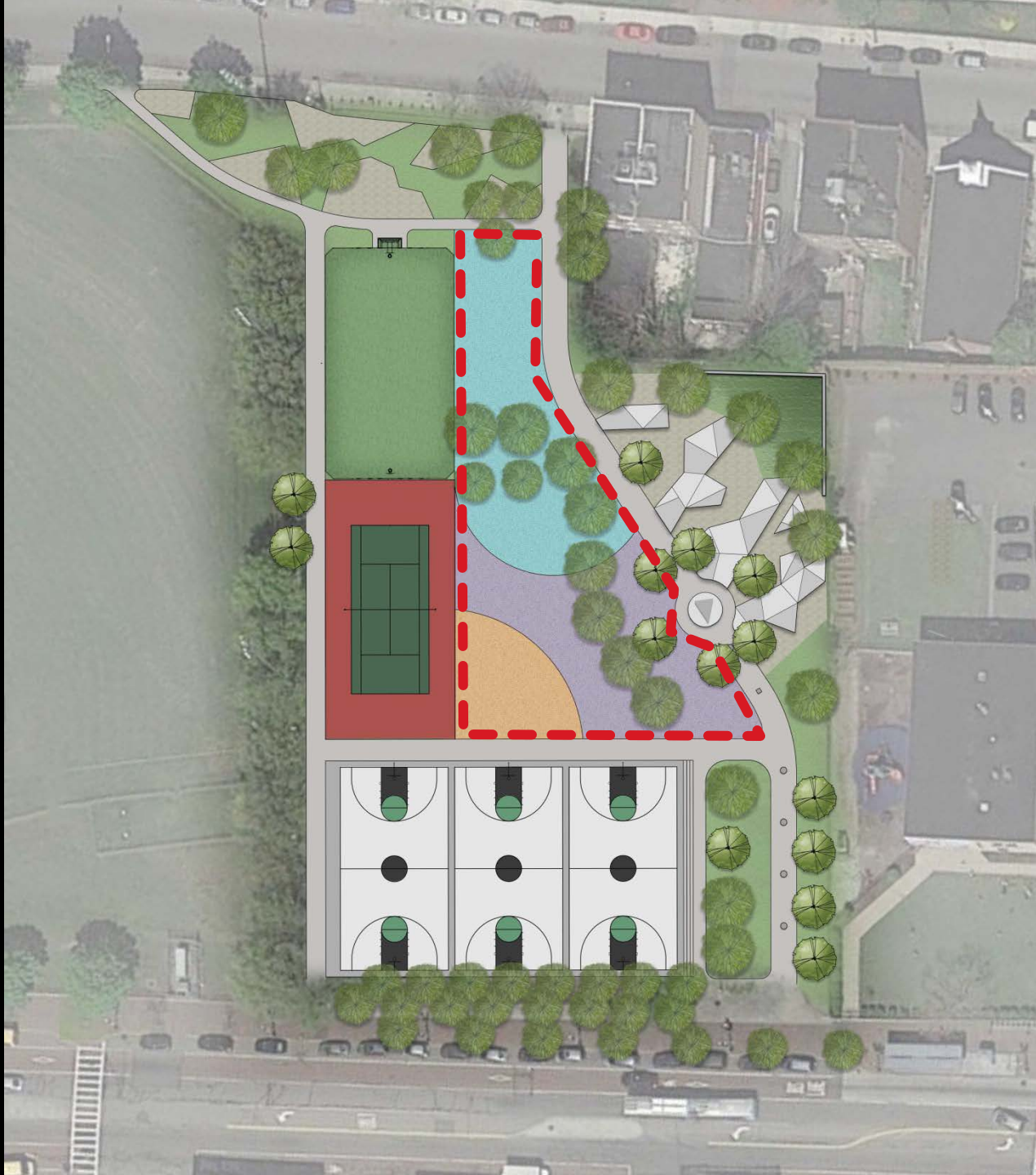


B



Courts

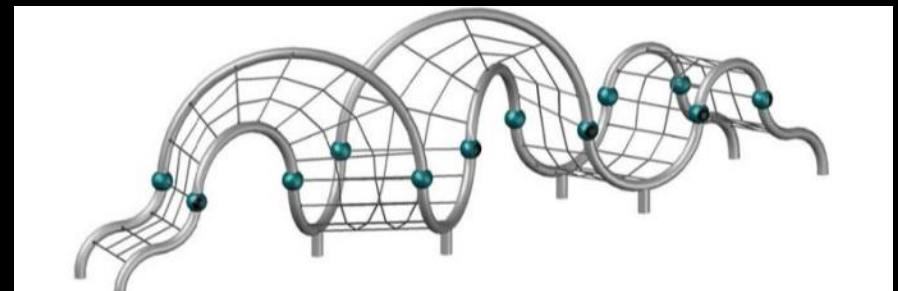
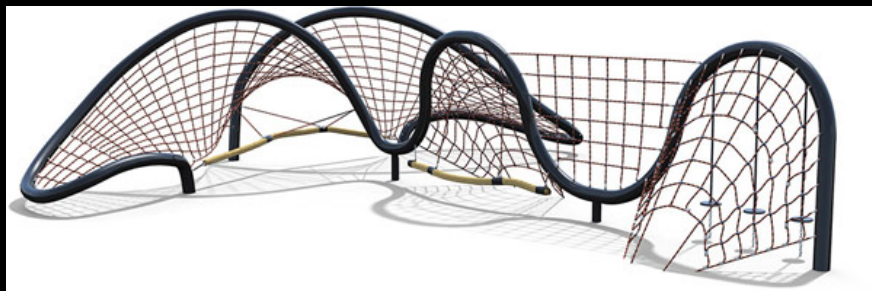




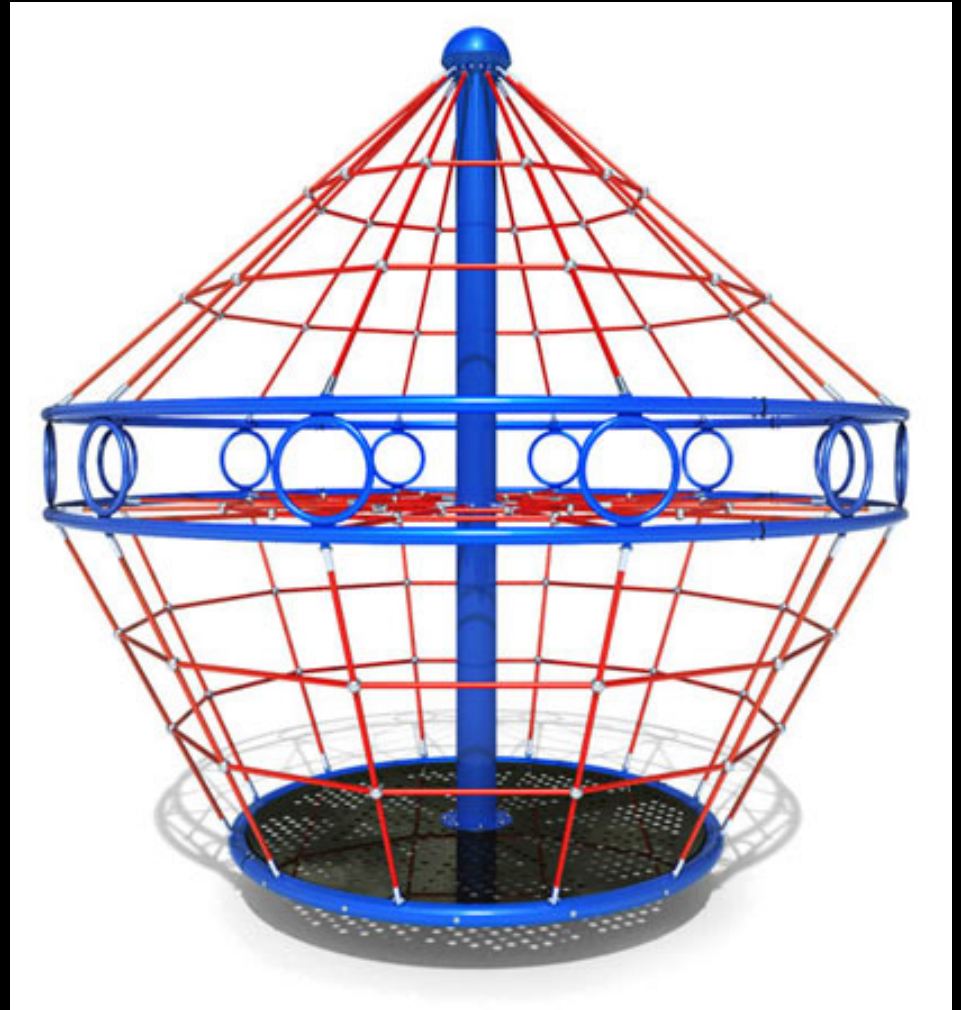
Splash Pad



Ropes Courses



Rotating Rope Climbers



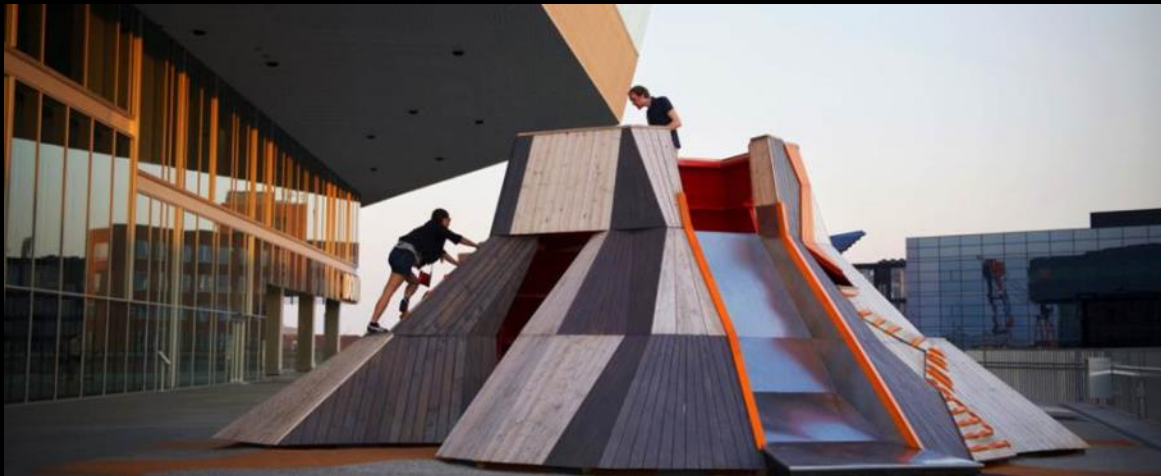
Play Equipment



Sports



Swings and Slides



Playground Surfacing



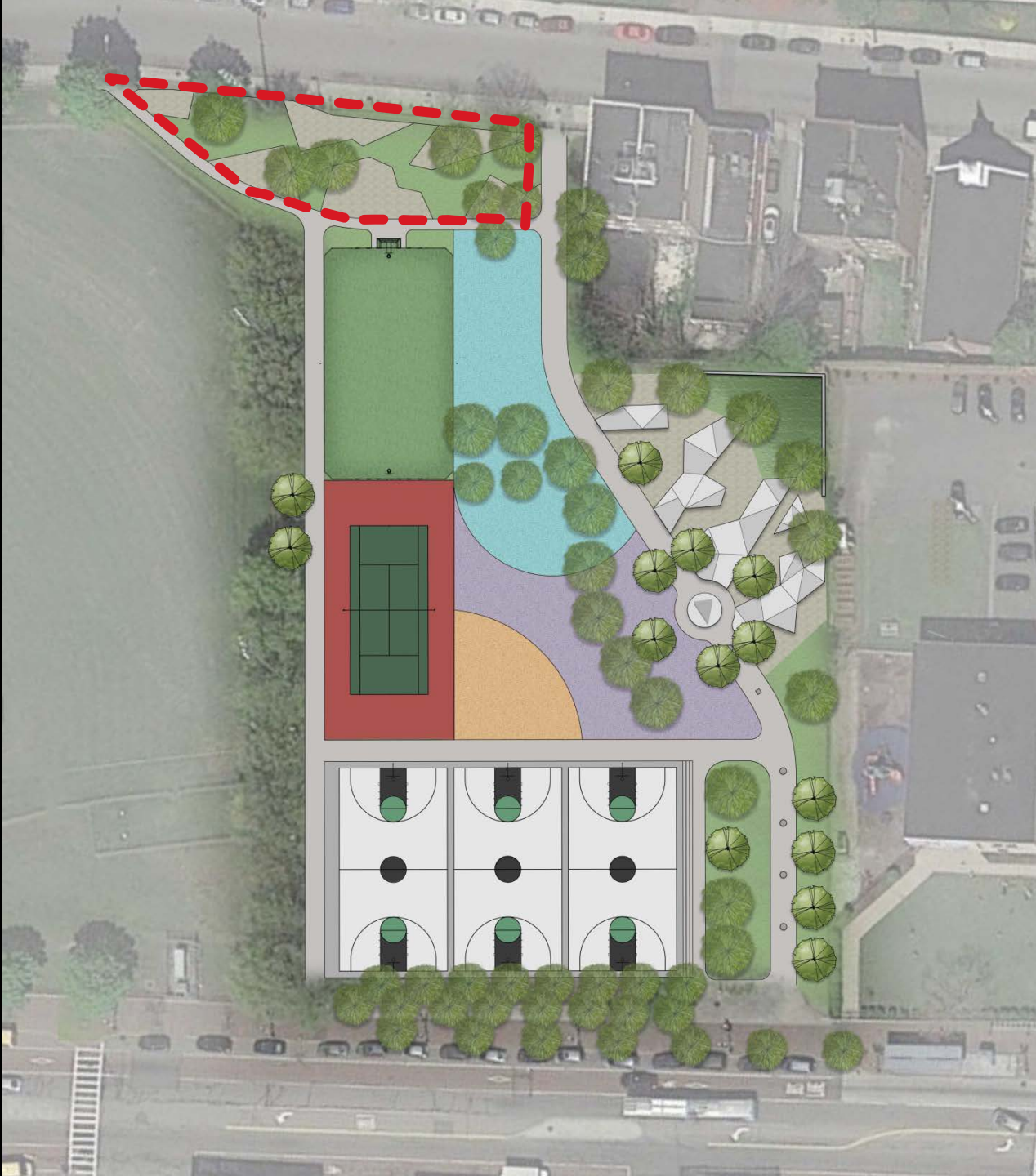


Geometric Landforms



Mounded Landforms





Community Gathering Space



Site Furnishings



Site Furnishings





SIDEWALK INTERVENTION

PERIMETER PATH





SIDEWALK INTERVENTION

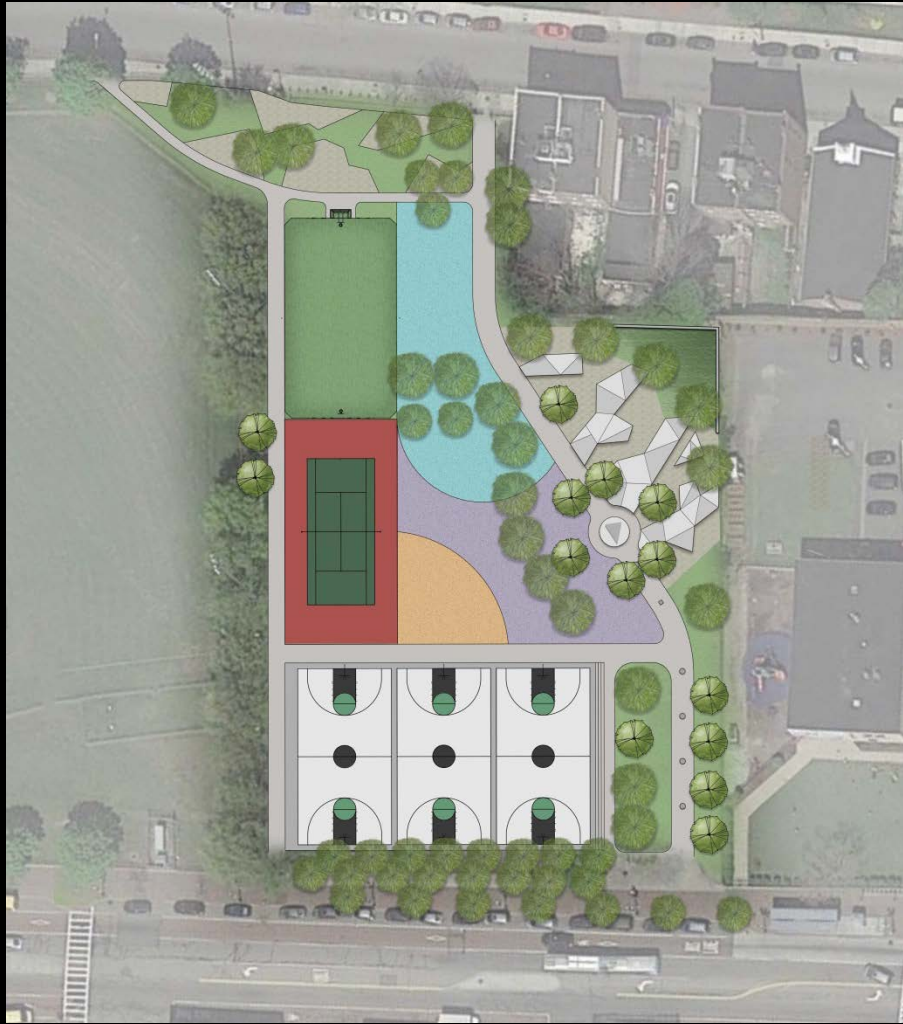
PERIMETER PATH



FENCE TO BE REMOVED
ALONG SHAWMUT AVE.

Sidewalk Intervention





An aerial photograph of a city park area, featuring a baseball field, tennis courts, and a playground. The image is overlaid with a semi-transparent white box containing text.

Thank You!

Should you have any additional questions, comments, or concerns regarding the design element please contact:

Nathan Frazee – Project Manager

Design & Construction Division

617.961.3167

Nathan.Frazee@boston.gov

For questions, comments, or concerns that are *non-design* related or if you have interest in starting a friends group, please contact:

Marchelle Jacques-Yarde – Outreach Coordinator/Park Partners Manager

617.961.3006

Marchelle.Jacques-Yarde@boston.gov