

Roxbury



CITY OF BOSTON
Martin J. Walsh, Mayor

IMAGINE
BOSTON 2030
imagine.boston.gov

Here's what we heard in your neighborhood

Our neighborhood needs more than bodegas, check cashing and fast food. Rebuild, rezone, and revitalize to support healthy places to shop, eat, and work.
—Gabrielle, Roxbury

Connections from Beacon Yards to Longwood, West Roxbury, Hyde Park, Mattapan - a loop!
—Roxbury workshop participant

Residents at the Roxbury workshop emphasized the opportunities for Dudley Square, imagining it with a more vibrant business district, new jobs, and diverse housing stock that serves existing residents and provides homes for people of all incomes and different stages of life.

There was also a lot of excitement for new transit connections that would circle the city, enabling residents to get from Roxbury, Hyde Park, and Mattapan to existing job centers like Longwood and possible new job centers like Beacon Yards in Allston.

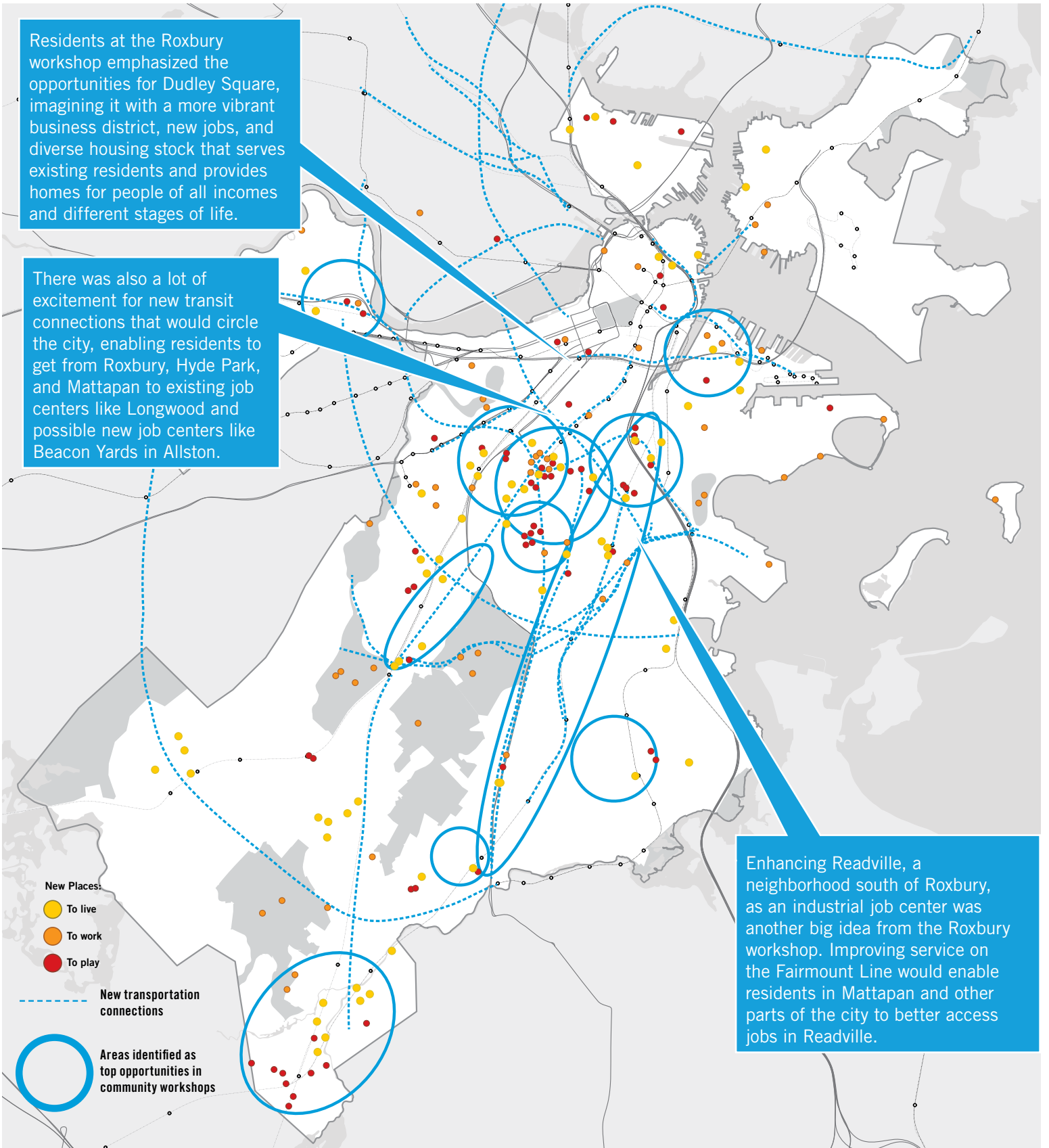
Enhancing Readville, a neighborhood south of Roxbury, as an industrial job center was another big idea from the Roxbury workshop. Improving service on the Fairmount Line would enable residents in Mattapan and other parts of the city to better access jobs in Readville.

New Places:

- To live
- To work
- To play

New transportation connections

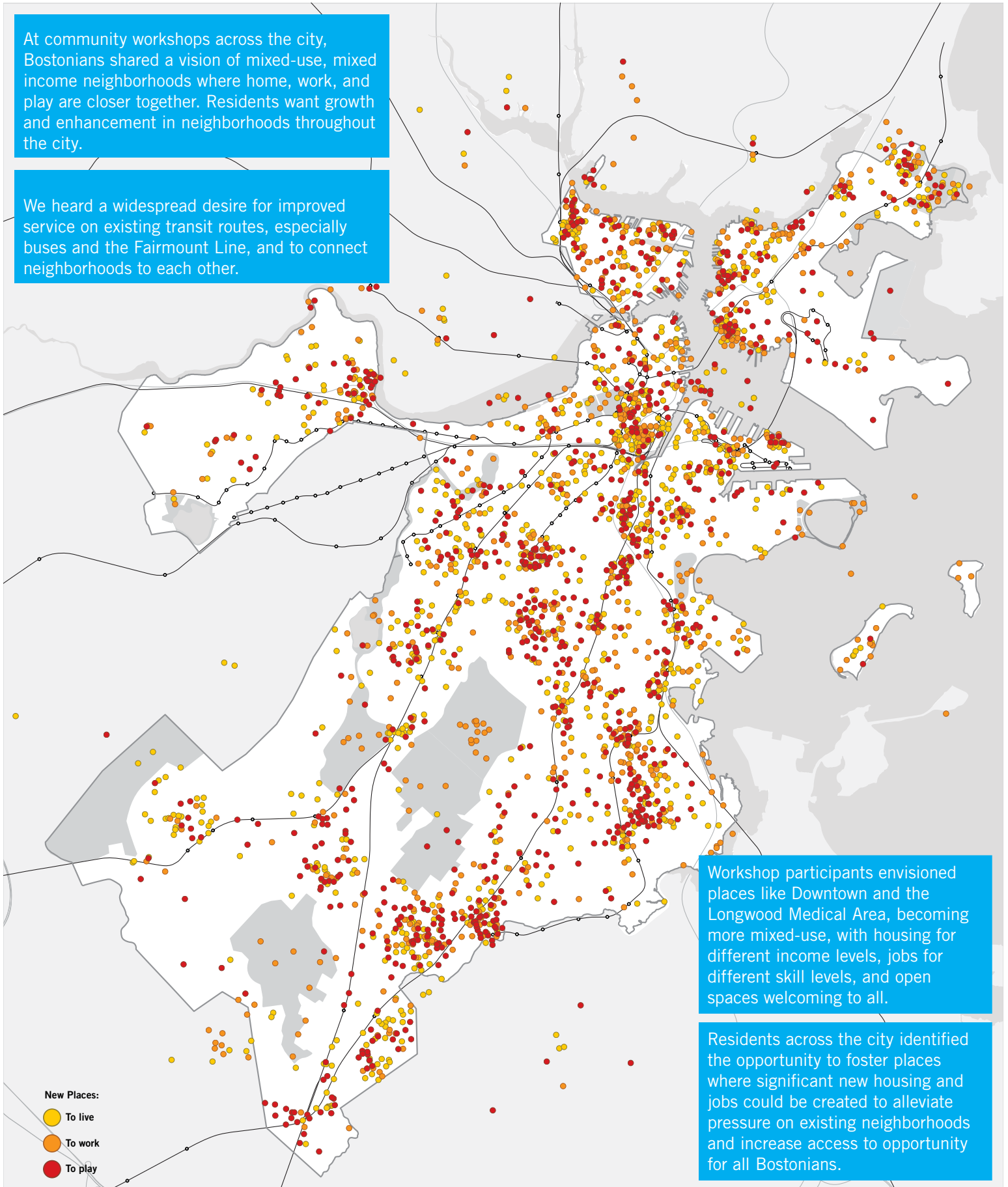
Areas identified as top opportunities in community workshops



Here's what we heard citywide

At community workshops across the city, Bostonians shared a vision of mixed-use, mixed income neighborhoods where home, work, and play are closer together. Residents want growth and enhancement in neighborhoods throughout the city.

We heard a widespread desire for improved service on existing transit routes, especially buses and the Fairmount Line, and to connect neighborhoods to each other.



Workshop participants envisioned places like Downtown and the Longwood Medical Area, becoming more mixed-use, with housing for different income levels, jobs for different skill levels, and open spaces welcoming to all.

Residents across the city identified the opportunity to foster places where significant new housing and jobs could be created to alleviate pressure on existing neighborhoods and increase access to opportunity for all Bostonians.