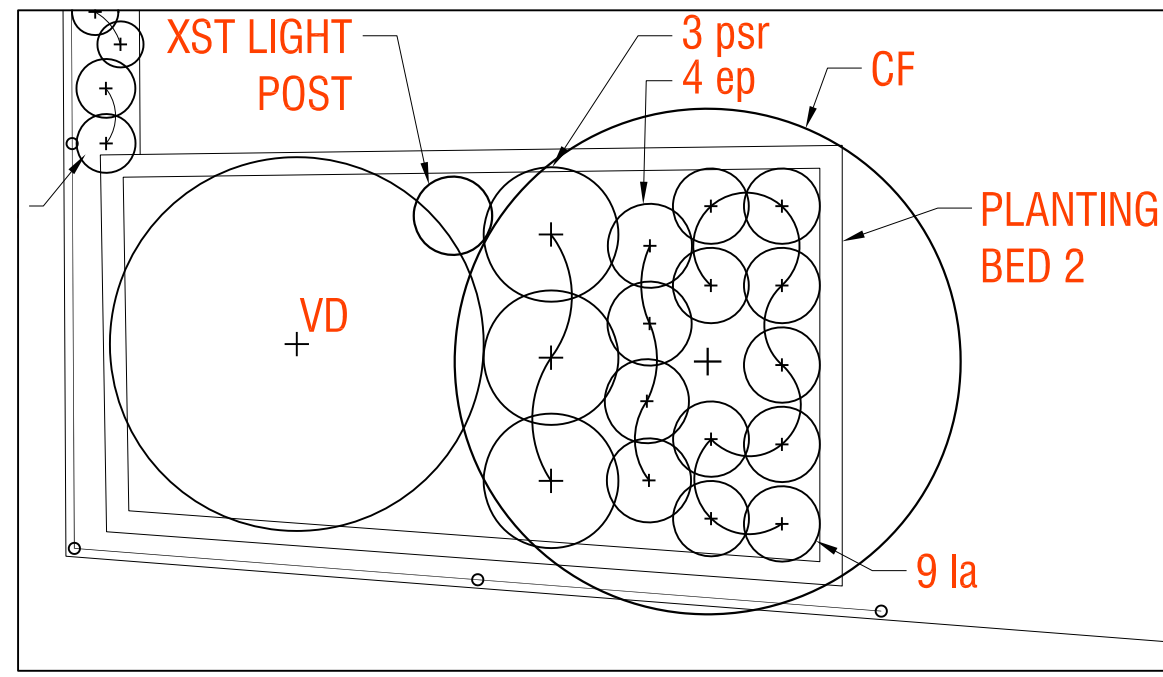
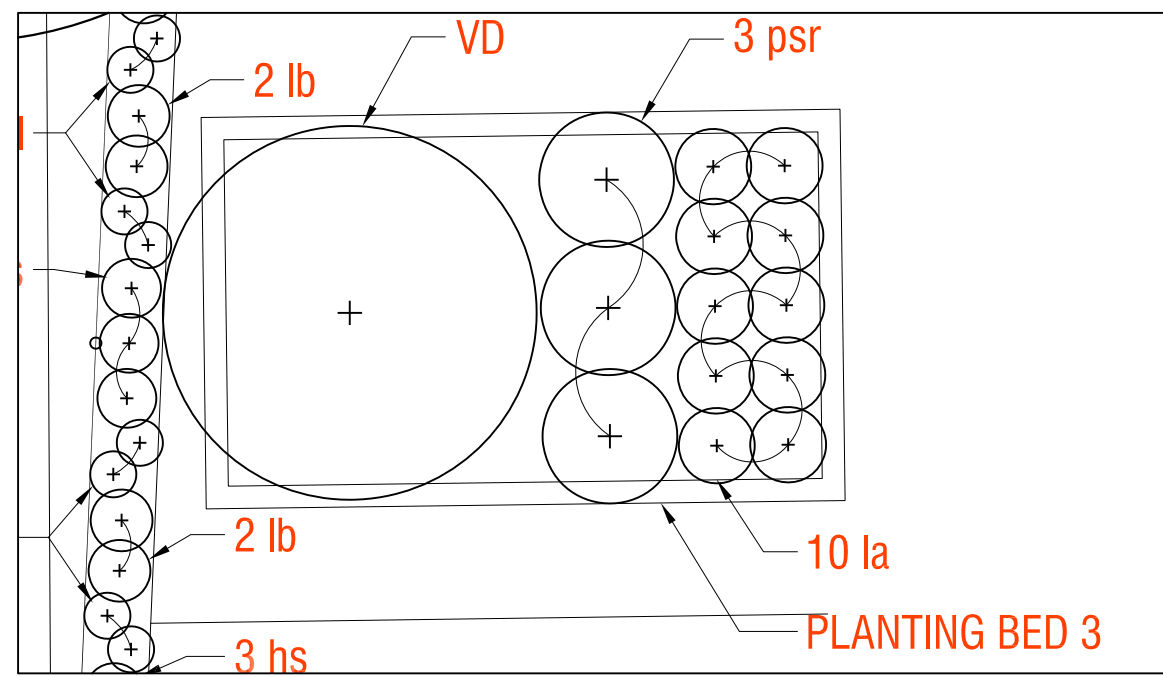


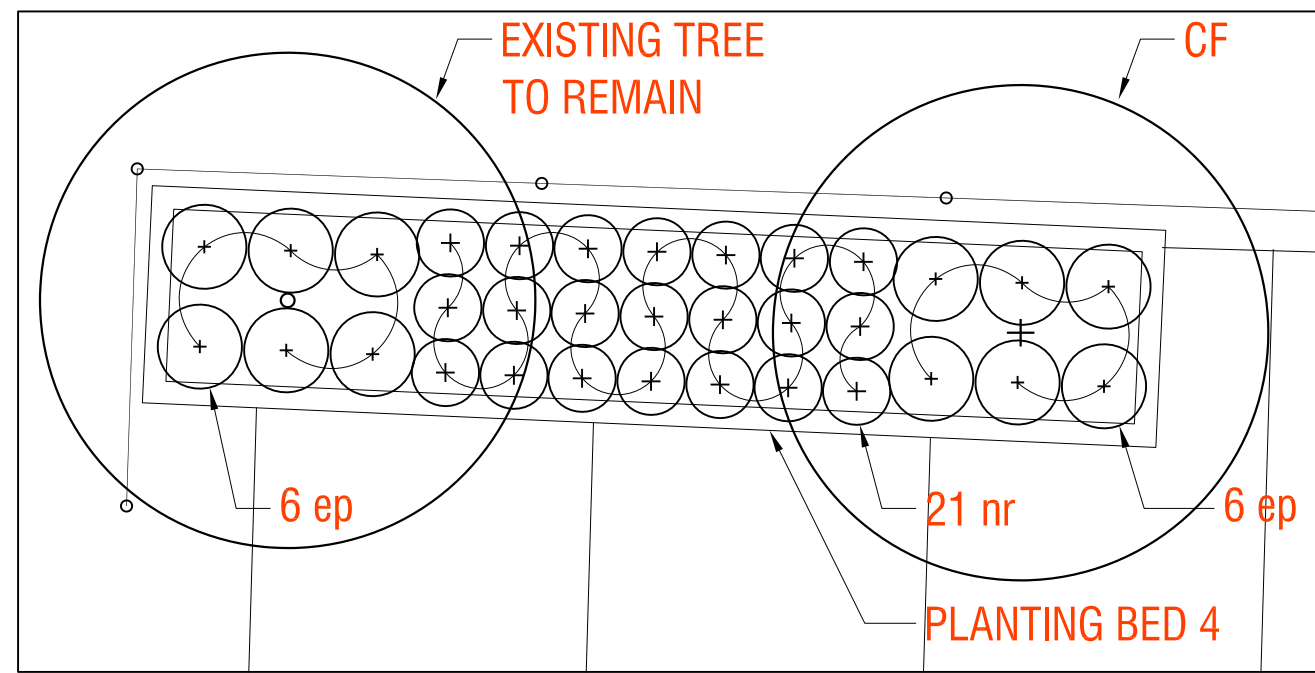
2 PROPOSED PLANTING BED - 1
SCALE: 3/16"=1'-0"



3 PROPOSED PLANTING BED - 2
SCALE: 3/16"=1'-0"



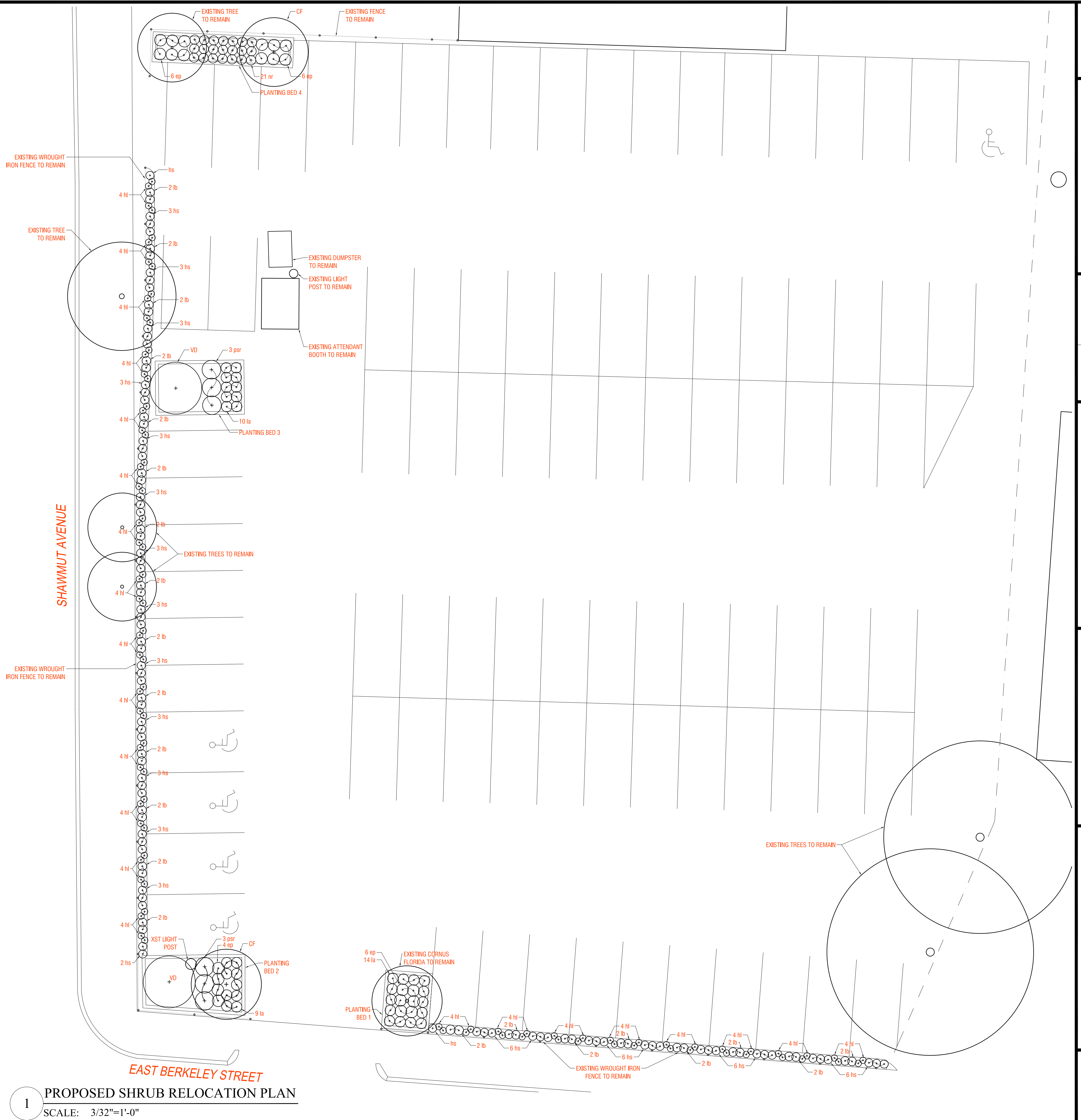
4 PROPOSED PLANTING BED - 3
SCALE: 3/16"=1'-0"



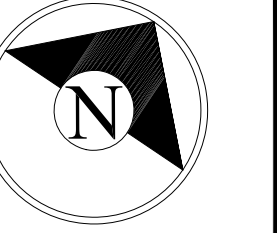
5 PROPOSED PLANTING BED - 4
SCALE: 3/16"=1'-0"

PLANT SCHEDULE

TAG:	LATIN NAME:	COMMON NAME:	QTY:
TREES			
CF	Cornus florida	Flowering Dogwood	2
PERENNIALS + SHRUBS			
VD	Viburnum dentatum	Arrowwood Viburnum	2
ep	Echinacea purpurea	Purple Coneflower	22
hl	Hosta 'Longpipes'	Hosta	88
hs	Hemerocallis 'Stella de Oro'	Daylily	67
la	Lavandula angustifolia 'Hidcote'	English Lavender	33
lb	Lilium 'Brunello'	Asiatic Lily	44
nr	Nepeta racemosa 'Walker's Low'	Catmint	21
psr	Pennisetum setaceum 'Rubrum'	Fountain Grass	6



1 PROPOSED SHRUB RELOCATION PLAN
SCALE: 3/32"=1'-0"



Timothy Burke
ARCHITECTURE, INC.
142 Berkeley Street Boston MA 02116
ph [617] 266 1332 fax [617] 266 1116

DATE: 04/11/19	DWG. BY: CJB	Date:
Rev:	Date:	Rev:

Stanhope Garage -
Proposed Landscape Plan

194-200 Shawmut Avenue
Boston, MA 02118

L1.0



1 *Cornus florida* - Flowering Dogwood
SCALE: N/A



2 *Viburnum dentatum* - Arrowwood Vibernum
SCALE: N/A



3 *Echinacea purpurea* - Purple Coneflower
SCALE: N/A



4 *Hosta 'Longpipes'* - Hosta
SCALE: N/A



5 *Hemerocallis 'Stella de Oro'* - Daylily
SCALE: N/A



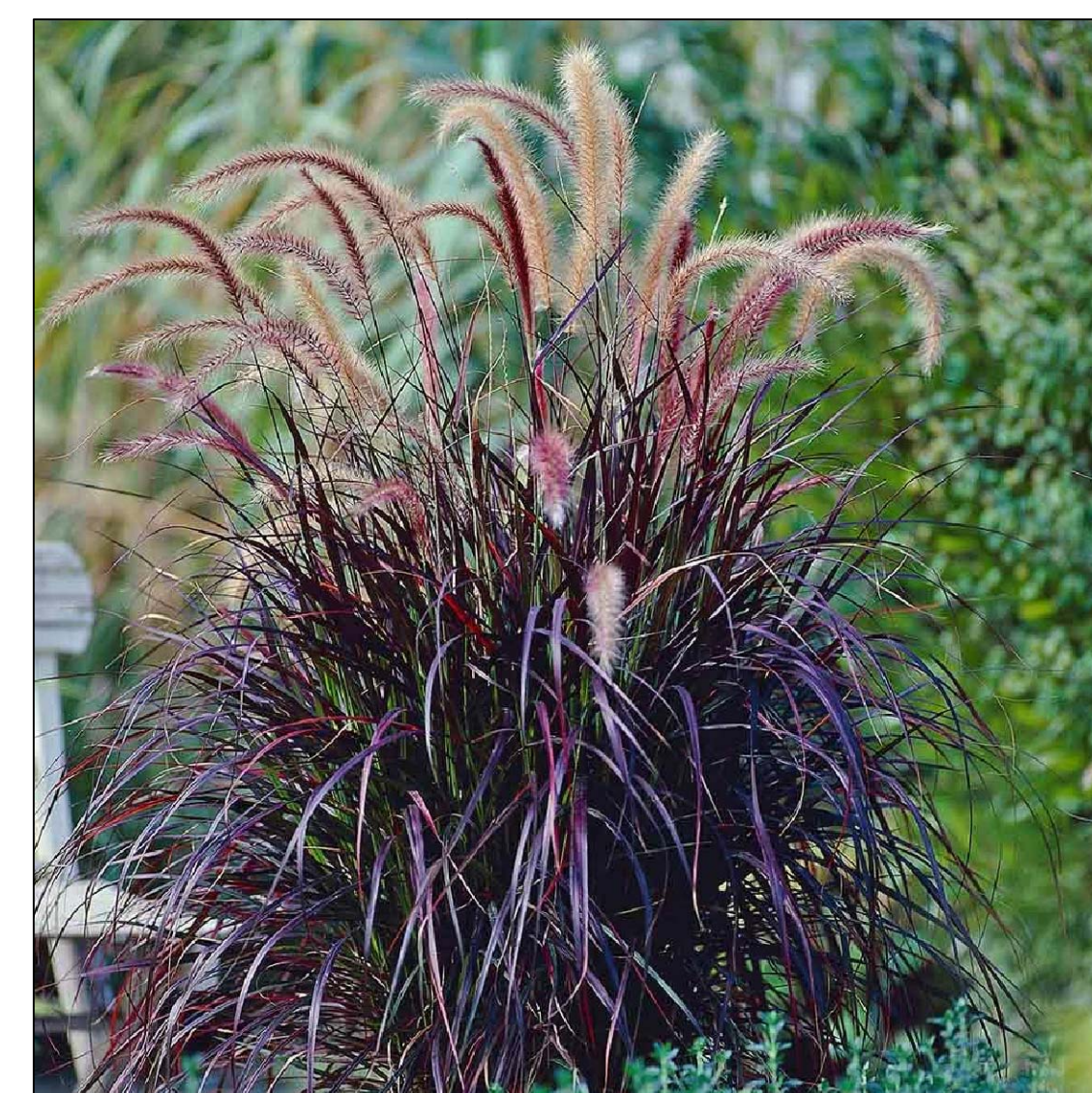
6 *Lavandula angustifolia 'Hidcote'* - English Lavender
SCALE: N/A



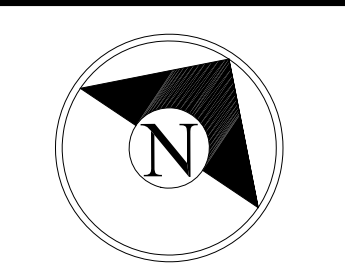
7 *Lilium 'Brunello'* - Asiatic Lily
SCALE: N/A



8 *Nepeta racemosa 'Walker's Low'* - Catmint
SCALE: N/A



9 *Pennisetum setaceum 'Rubrum'* - Fountain Grass
SCALE: N/A



Timothy Burke
ARCHITECTURE, INC.
142 Berkeley Street Boston MA 02116
ph [617] 266 1332 fax [617] 266 1116

DATE	REV.	DATE	REV.	DATE	REV.
04/11/19	1				



Stanhope Garage -
Proposed Plant Cut Sheets

194-200 Shawmut Avenue
Boston, MA 02118

L1.1