

LEGEND

XX/XX PROPOSED DIRECTIONAL SAMSUNG 5G DRU ANTENNA (ARROW INDICATES ANTENNA DIRECTION)



verizon
WIRELESS

VERIZON WIRELESS
118 FLANDERS ROAD
WESTBOROUGH, MA 01581-3956

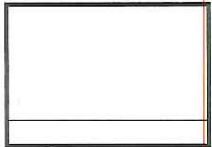
**VERIZON WIRELESS
FENWAY PARK 5G**

CONCEPTUAL DRAWINGS

2	01/15/19	FOR SUBMITTAL
1	01/07/19	FOR SUBMITTAL
0	12/20/18	FOR SUBMITTAL
E	12/17/18	FOR COMMENT
D	12/12/18	FOR COMMENT
C	11/20/18	FOR COMMENT
B	10/12/18	FOR COMMENT

Dewberry

Dewberry Engineers Inc.
500 SUMNER STREET
10TH FLOOR
BOSTON, MA 02210
PHONE: 617.225.3400
FAX: 617.495.3210



DRAWN BY:	JG
REVIEWED BY:	DAS
CHECKED BY:	BBR
PROJECT NUMBER:	50002925
JOB NUMBER:	50082902

SITE ADDRESS:
4 YAWKEY WAY A.K.A.
4 JERSEY STREET
BOSTON, MA 02215

SHEET TITLE


CONCOURSE LEVEL PLAN

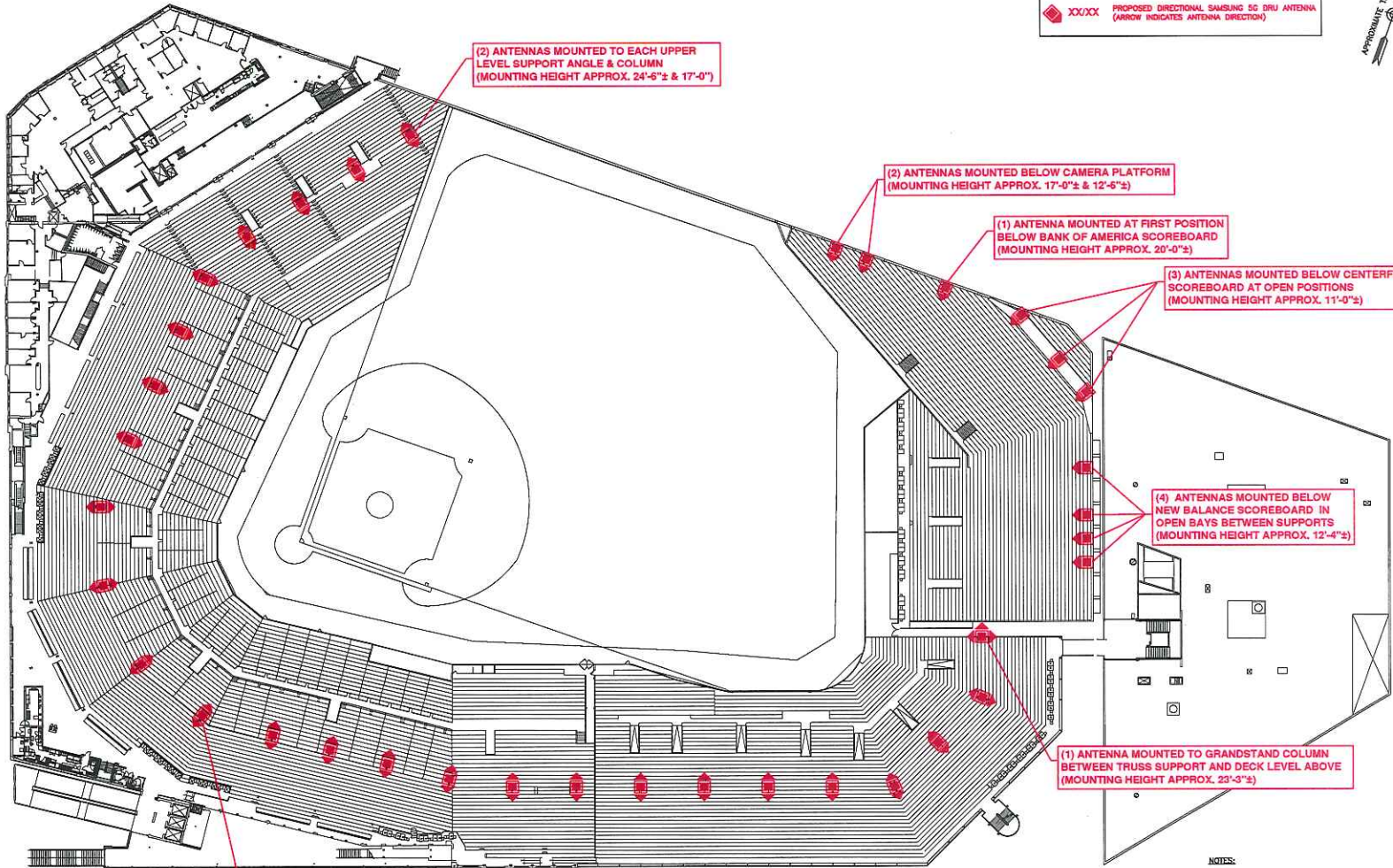
SHEET NUMBER

C-1

CONCOURSE PLAN ①
SCALE: N.T.S.

- NOTES:**
1. ASSOCIATED FIBER, COAX, & OTHER EQUIPMENT NOT SHOWN FOR CLARITY.
 2. ALL VISIBLE ANTENNAS, EQUIPMENT & HARDWARE ARE TO BE PAINTED FENWAY GREEN OR TO MATCH SURROUNDINGS PER DIRECTION OF VERIZON C.M. & FENWAY REPRESENTATIVE.
 3. ALL PROPOSED ANTENNA HEIGHTS ARE APPROXIMATE. FINAL MOUNTING HEIGHT AND LOCATIONS TO BE FIELD VERIFIED AND CONFIRMED WITH VERIZON WIRELESS C.M.
 4. ALL ANTENNAS TO HAVE REDUNDANT LANYARD ATTACHMENTS TO NEAREST STRUCTURAL SUPPORT ELEMENT TO RESTRAIN ANTENNA & HARDWARE IN VERTICAL DIRECTION.

LEGEND	
	PROPOSED DIRECTIONAL SAMSUNG 5G DRU ANTENNA (ARROW INDICATES ANTENNA DIRECTION)



(2) ANTENNAS MOUNTED TO EACH UPPER LEVEL SUPPORT ANGLE & COLUMN (MOUNTING HEIGHT APPROX. 24'-6"± & 17'-0")

(2) ANTENNAS MOUNTED BELOW CAMERA PLATFORM (MOUNTING HEIGHT APPROX. 17'-0"± & 12'-6"±)

(1) ANTENNA MOUNTED AT FIRST POSITION BELOW BANK OF AMERICA SCOREBOARD (MOUNTING HEIGHT APPROX. 20'-0"±)

(3) ANTENNAS MOUNTED BELOW CENTERFIELD SCOREBOARD AT OPEN POSITIONS (MOUNTING HEIGHT APPROX. 11'-0"±)

(4) ANTENNAS MOUNTED BELOW NEW BALANCE SCOREBOARD IN OPEN BAYS BETWEEN SUPPORTS (MOUNTING HEIGHT APPROX. 12'-4"±)

(1) ANTENNA MOUNTED TO GRANDSTAND COLUMN BETWEEN TRUSS SUPPORT AND DECK LEVEL ABOVE (MOUNTING HEIGHT APPROX. 23'-3"±)

(2) ANTENNAS MOUNTED TO EACH GRANDSTAND COLUMN UNDER BROADCAST TOWER (MOUNTING HEIGHT APPROX. 17'-0"±)

GRANDSTAND PLAN
SCALE: N.T.S. ①

- NOTES:
1. ASSOCIATED FIBER, COAX, & OTHER EQUIPMENT NOT SHOWN FOR CLARITY.
 2. ALL VISIBLE ANTENNAS, EQUIPMENT & HARDWARE ARE TO BE PAINTED FENWAY GREEN OR TO MATCH SURROUNDINGS PER DIRECTION OF VERIZON C.M. & FENWAY REPRESENTATIVE.
 3. ALL PROPOSED ANTENNA HEIGHTS ARE APPROXIMATE. FINAL MOUNTING HEIGHT AND LOCATIONS TO BE FIELD VERIFIED AND CONFIRMED WITH VERIZON WIRELESS C.M.
 4. ALL ANTENNAS TO HAVE REDUNDANT LANYARD ATTACHMENTS TO NEAREST STRUCTURAL SUPPORT ELEMENT TO RESTRAIN ANTENNA & HARDWARE IN VERTICAL DIRECTION.

verizon
WIRELESS
VERIZON WIRELESS
118 FLANDERS ROAD
WESTBOROUGH, MA 01581-3956

**VERIZON WIRELESS
FENWAY PARK 5G**

CONCEPTUAL DRAWINGS		
2	01/15/18	FOR SUBMITTAL
1	01/07/18	FOR SUBMITTAL
0	12/20/18	FOR SUBMITTAL
E	12/17/18	FOR COMMENT
D	12/12/18	FOR COMMENT
C	11/20/18	FOR COMMENT
B	10/12/18	FOR COMMENT

Dewberry
Dewberry Engineers Inc.
280 SUMMER STREET
10TH FLOOR
BOSTON, MA 02210
PHONE: 617.658.3400
FAX: 617.685.3610




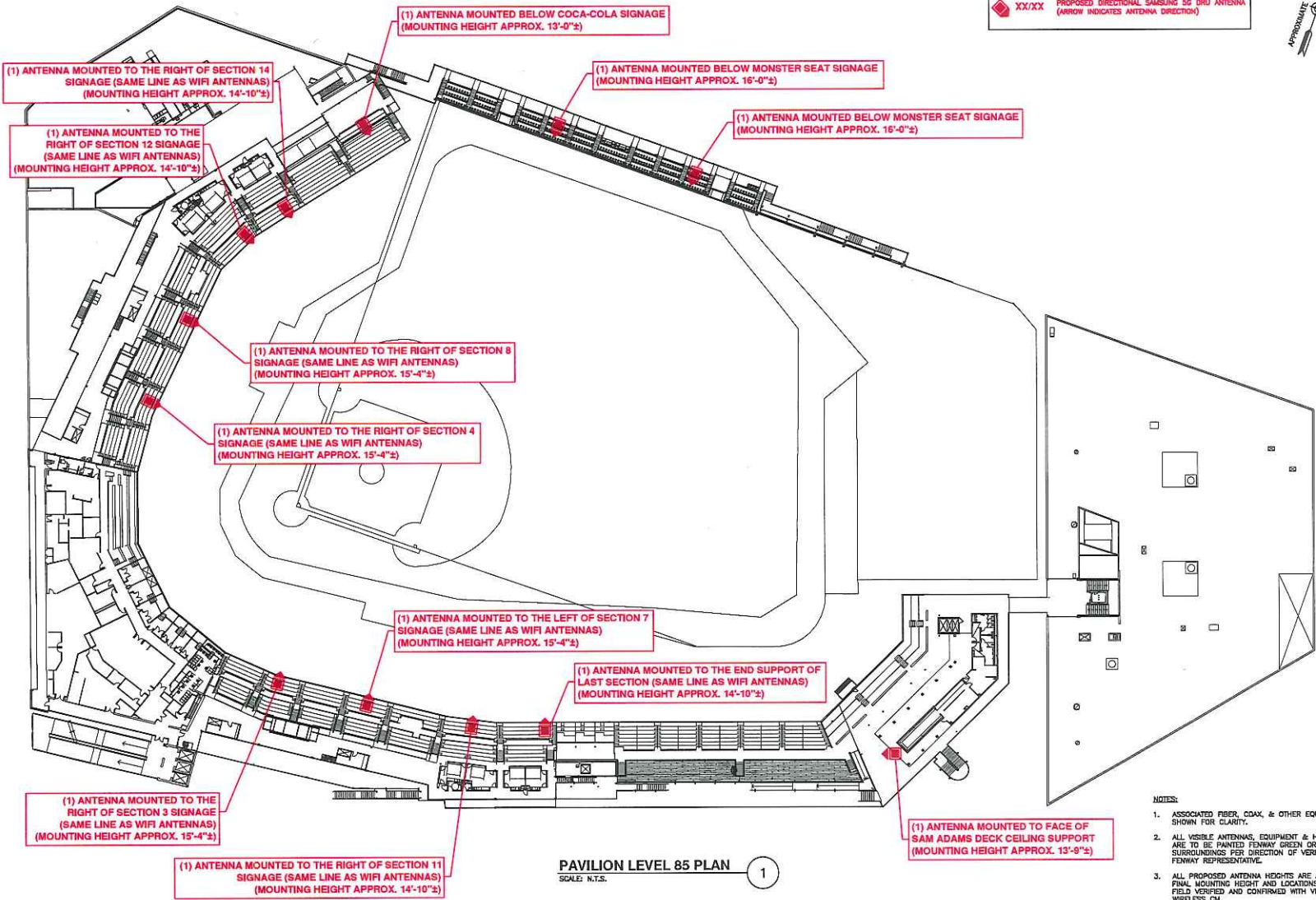
DRAWN BY:	JG
REVIEWED BY:	DAS
CHECKED BY:	BBR
PROJECT NUMBER:	50002925
JOB NUMBER:	50082902

SITE ADDRESS:
4 YAWKEY WAY A.K.A.
4 JERSEY STREET
BOSTON, MA 02215

SHEET TITLE
GRANDSTAND PLAN

SHEET NUMBER

LEGEND	
	PROPOSED DIRECTIONAL SAMSUNG 5G DRU ANTENNA (ARROW INDICATES ANTENNA DIRECTION)



PAVILION LEVEL 85 PLAN
SCALE: N.T.S.

- NOTES:**
- ASSOCIATED FIBER, COAX, & OTHER EQUIPMENT NOT SHOWN FOR CLARITY.
 - ALL VISIBLE ANTENNAS, EQUIPMENT & HARDWARE ARE TO BE PAINTED FENWAY GREEN OR TO MATCH SURROUNDINGS PER DIRECTION OF VERIZON C.M. & FENWAY REPRESENTATIVE.
 - ALL PROPOSED ANTENNA HEIGHTS ARE APPROXIMATE. FINAL MOUNTING HEIGHT AND LOCATIONS TO BE FIELD VERIFIED AND CONFIRMED WITH VERIZON WIRELESS CM.
 - ALL ANTENNAS TO HAVE REDUNDANT LANYARD ATTACHMENTS TO NEAREST STRUCTURAL SUPPORT ELEMENT TO RESTRAIN ANTENNA & HARDWARE IN VERTICAL DIRECTION.

verizon
WIRELESS
VERIZON WIRELESS
118 FLANDERS ROAD
WESTBOROUGH, MA 01581-3956

**VERIZON WIRELESS
FENWAY PARK 5G**

CONCEPTUAL DRAWINGS		
2	01/15/19	FOR SUBMITTAL
1	01/07/19	FOR SUBMITTAL
0	12/20/18	FOR SUBMITTAL
E	12/17/18	FOR COMMENT
D	12/12/18	FOR COMMENT
C	11/20/18	FOR COMMENT
B	10/12/18	FOR COMMENT

Dewberry
Dewberry Engineers Inc.
280 SUMNER STREET
10TH FLOOR
BOSTON, MA 02210
PHONE: 617.656.3400
FAX: 617.656.3310



DRAWN BY:	JG
REVIEWED BY:	DAS
CHECKED BY:	BRR
PROJECT NUMBER:	50002925
JOB NUMBER:	50082902

SITE ADDRESS:
4 YAWKEY WAY A.K.A.
4 JERSEY STREET
BOSTON, MA 02215

PAVILION LEVEL 85 PLAN

SHEET NUMBER

verizon
WIRELESS

VERIZON WIRELESS
118 FLANDERS ROAD
WESTBOROUGH, MA 01581-3956

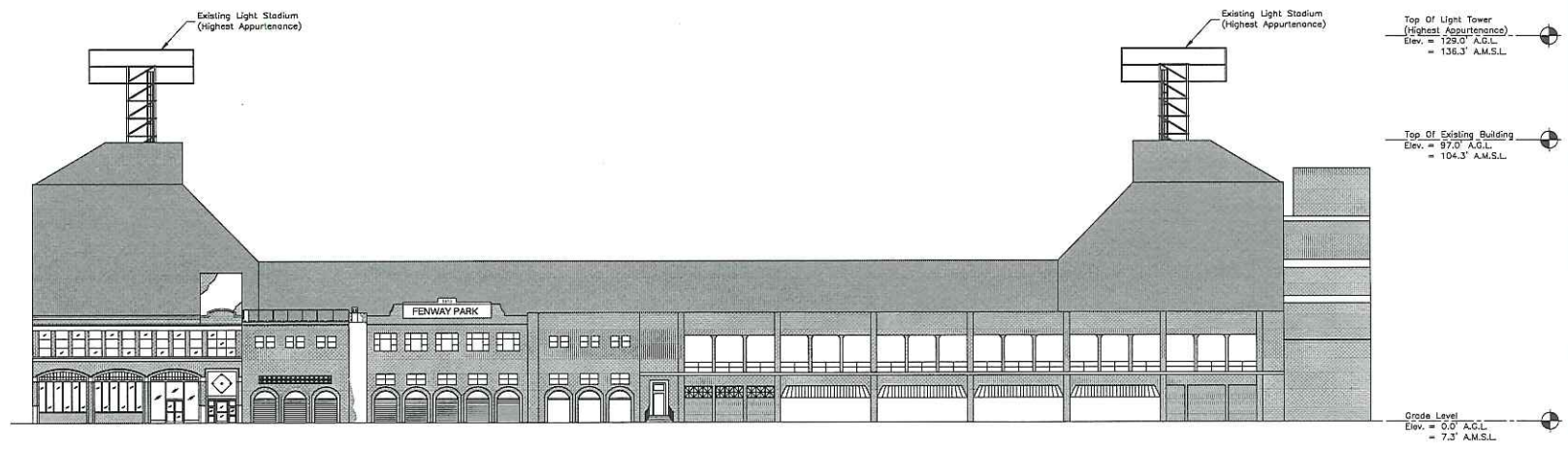
**VERIZON WIRELESS
FENWAY PARK 5G**

CONCEPTUAL DRAWINGS

2	01/15/19	FOR SUBMITTAL
1	01/07/19	FOR SUBMITTAL
0	12/20/18	FOR SUBMITTAL
E	12/17/18	FOR COMMENT
D	12/12/18	FOR COMMENT
C	11/20/18	FOR COMMENT
B	10/12/18	FOR COMMENT

Dewberry

Dewberry Engineers Inc.
220 SUMNER STREET
10TH FLOOR
BOSTON, MA 02118
PHONE: 617.666.3400
FAX: 617.666.3310



BUILDING ELEVATION 1

SCALE: 1"=40' FOR 11"x17"
1"=20' FOR 22"x34"

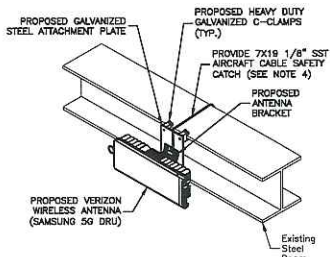
- NOTES:
- ELEVATION BASED ON EXISTING PLANS BY D'AGOSTINO IZZO QUIRK ARCHITECTS, INC. DATED 09/01/15 & FAA SURVEY BY DEWBERRY ENGINEERS DATED 01/21/11.
 - ASSOCIATED ANTENNAS, FIBER, COAX, & OTHER EQUIPMENT NOT SHOWN FOR CLARITY.

DRAWN BY:	JG
REVIEWED BY:	DAS
CHECKED BY:	BBR
PROJECT NUMBER:	50002025
JOB NUMBER:	50082902

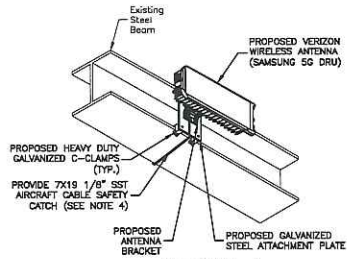
SITE ADDRESS:
4 YAWKEY WAY A.K.A.
4 JERSEY STREET
BOSTON, MA 02215

SHEET TITLE
BUILDING ELEVATION

SHEET NUMBER

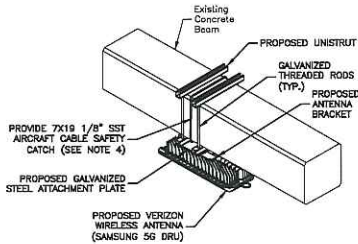


ISOMETRIC VIEW - I

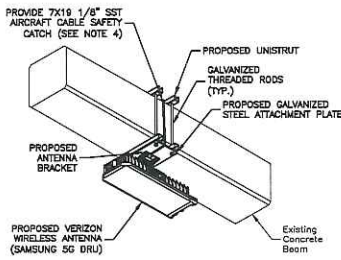


ISOMETRIC VIEW - II

TYPICAL STEEL BEAM WEB ATTACHMENT DETAIL 1
SCALE: N.T.S.

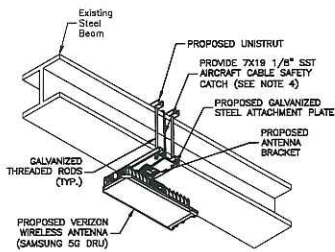


ISOMETRIC VIEW - I

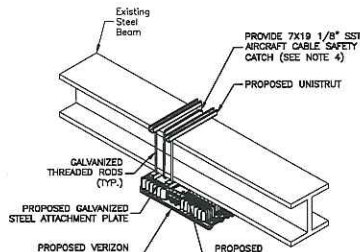


ISOMETRIC VIEW - II

TYPICAL CONCRETE BEAM ATTACHMENT DETAIL 2
SCALE: N.T.S.

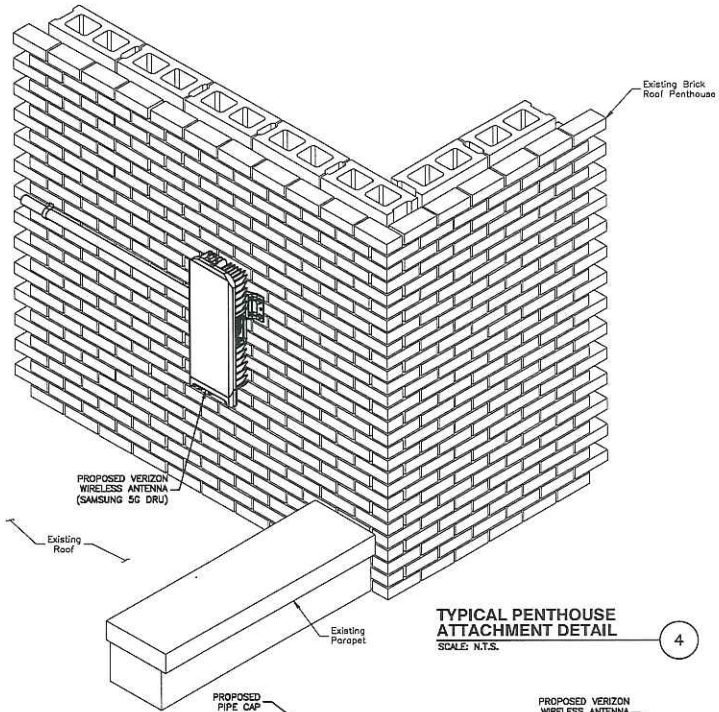


ISOMETRIC VIEW - I

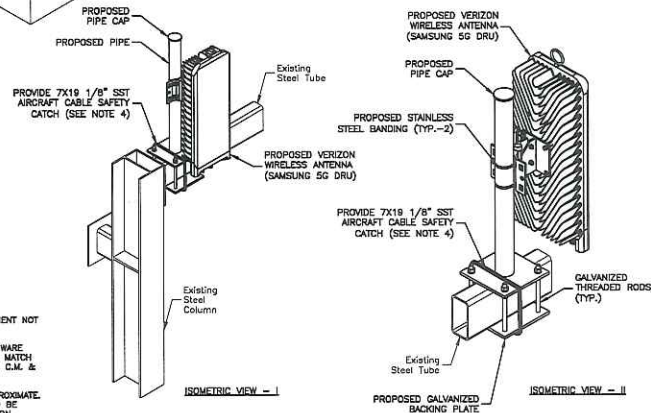


ISOMETRIC VIEW - II

TYPICAL STEEL BEAM FLANGE ATTACHMENT DETAIL 3
SCALE: N.T.S.



TYPICAL PENTHOUSE ATTACHMENT DETAIL 4
SCALE: N.T.S.



TYPICAL EXTERIOR CANOPY ATTACHMENT DETAIL 5
SCALE: N.T.S.

- NOTES:**
- ASSOCIATED FIBER, COAX, & OTHER EQUIPMENT NOT SHOWN FOR CLARITY.
 - ALL VISIBLE ANTENNAS, EQUIPMENT & HARDWARE ARE TO BE PAINTED FENWAY GREEN OR TO MATCH SURROUNDINGS PER DIRECTION OF VERIZON C.M. & FENWAY REPRESENTATIVE.
 - ALL PROPOSED ANTENNA HEIGHTS ARE APPROXIMATE. FINAL MOUNTING HEIGHT AND LOCATIONS TO BE FIELD VERIFIED AND CONFIRMED WITH VERIZON WIRELESS C.M.
 - ALL ANTENNAS TO HAVE REDUNDANT LANYARD ATTACHMENTS TO NEAREST STRUCTURAL SUPPORT ELEMENT TO RESTRAIN ANTENNA & HARDWARE IN VERTICAL DIRECTION.

verizon
WIRELESS
VERIZON WIRELESS
118 FLANDERS ROAD
WESTBOROUGH, MA 01581-3956

**VERIZON WIRELESS
FENWAY PARK 5G**

CONCEPTUAL DRAWINGS	
2	01/15/19 FOR SUBMITTAL
1	01/07/19 FOR SUBMITTAL
0	12/20/18 FOR SUBMITTAL
E	12/17/18 FOR COMMENT
D	12/12/18 FOR COMMENT
C	11/20/18 FOR COMMENT
B	10/12/18 FOR COMMENT

Dewberry
Dewberry Engineers Inc.
200 SUMNER STREET
10TH FLOOR
BOSTON, MA 02210
PHONE: 617.696.3400
FAX: 617.696.3310

DRAWN BY:	JG
REVIEWED BY:	DAS
CHECKED BY:	BBR
PROJECT NUMBER:	50002925
JOB NUMBER:	50082902

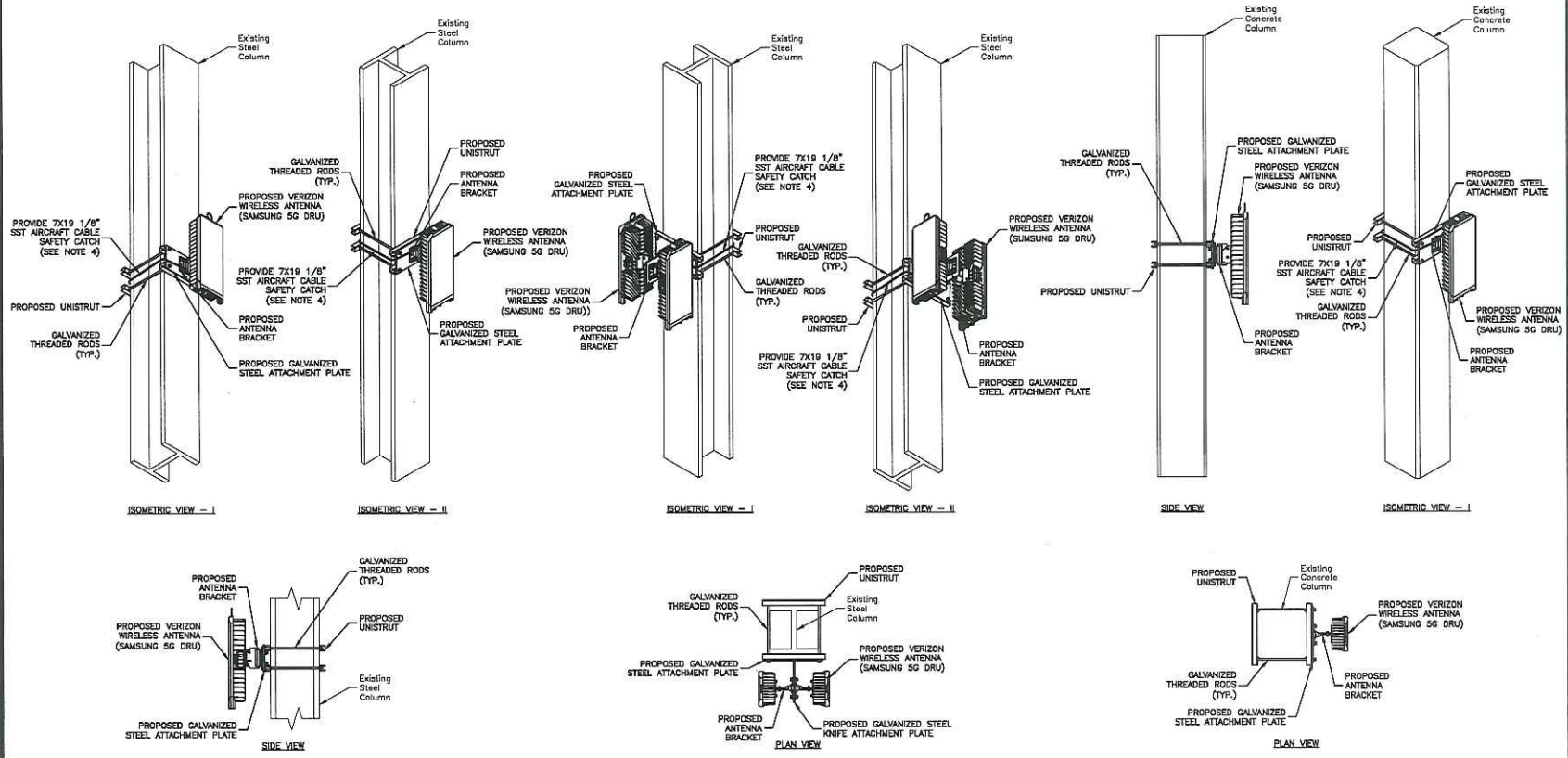
SITE ADDRESS:
4 YAWKEY WAY A.K.A.
4 JERSEY STREET
BOSTON, MA 02215

SHEET TITLE
**ANTENNA MOUNT
DETAILS - I**
SHEET NUMBER

**VERIZON WIRELESS
FENWAY PARK 5G**

CONCEPTUAL DRAWINGS	
2	01/15/19 FOR SUBMITTAL
1	01/07/19 FOR SUBMITTAL
0	12/20/18 FOR SUBMITTAL
E	12/17/18 FOR COMMENT
D	12/12/18 FOR COMMENT
C	11/20/18 FOR COMMENT
B	10/12/18 FOR COMMENT

Dewberry
Dewberry Engineers Inc.
220 SUMNER STREET
10TH FLOOR
BOSTON, MA 02215
PHONE: 617.666.3400
FAX: 617.665.3010



TYPICAL STEEL COLUMN ATTACHMENT DETAIL ①
SCALE: N.T.S.

TYPICAL STEEL COLUMN DUAL ANTENNA ATTACHMENT DETAIL ②
SCALE: N.T.S.

TYPICAL CONCRETE COLUMN ATTACHMENT DETAIL ③
SCALE: N.T.S.

- NOTES:**
1. ASSOCIATED FIBER, COAX, & OTHER EQUIPMENT NOT SHOWN FOR CLARITY.
 2. ALL VISIBLE ANTENNAS, EQUIPMENT & HARDWARE ARE TO BE PAINTED FENWAY GREEN OR TO MATCH SURROUNDINGS PER DIRECTION OF VERIZON C.M. & FENWAY REPRESENTATIVE.
 3. ALL PROPOSED ANTENNA HEIGHTS ARE APPROXIMATE. FINAL MOUNTING HEIGHT AND LOCATIONS TO BE FIELD VERIFIED AND CONFIRMED WITH VERIZON WIRELESS CM.
 4. ALL ANTENNAS TO HAVE REDUNDANT LANYARD ATTACHMENTS TO NEAREST STRUCTURAL SUPPORT ELEMENT TO RESTRAIN ANTENNA & HARDWARE IN VERTICAL DIRECTION.

DRAWN BY:	JG
REVIEWED BY:	DAS
CHECKED BY:	BBR
PROJECT NUMBER:	50002925
JOB NUMBER:	50082902

SITE ADDRESS:
4 YAWKEY WAY A.K.A.
4 JERSEY STREET
BOSTON, MA 02215
SHEET TITLE
**ANTENNA MOUNT
DETAILS - II**
SHEET NUMBER



VERIZON WIRELESS
118 FLANDERS ROAD
WESTBOROUGH, MA 01581-3956

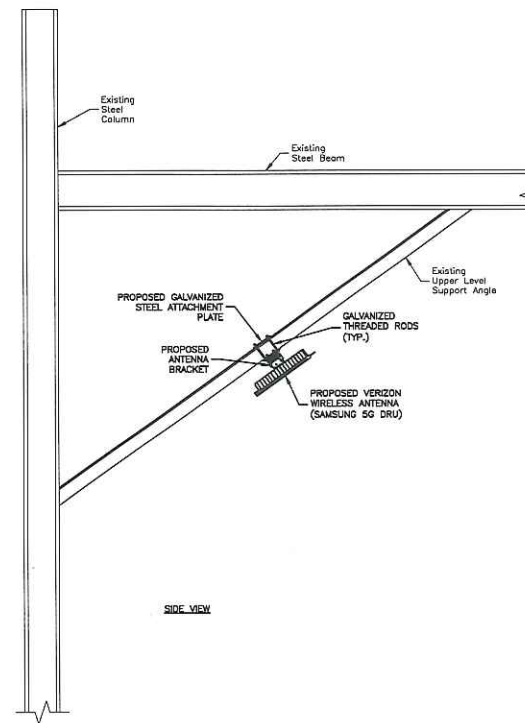
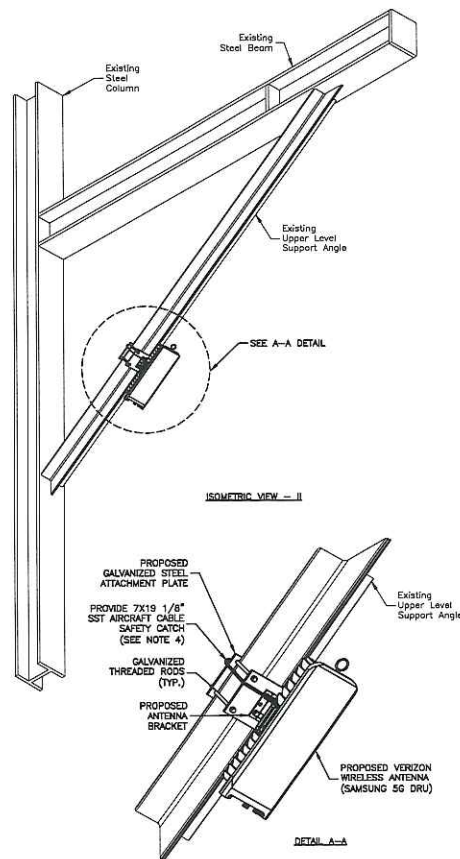
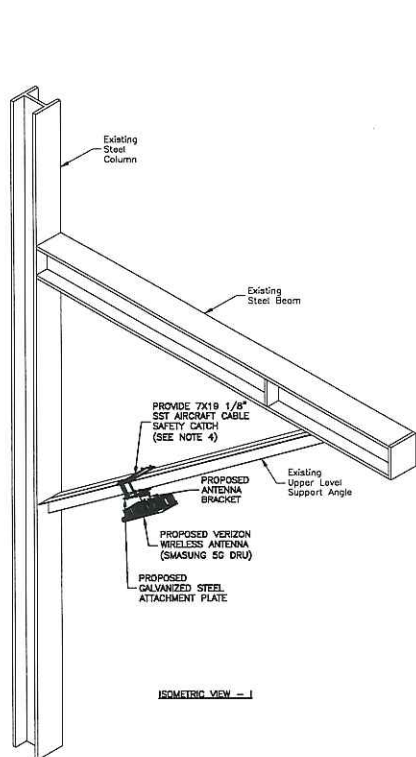
**VERIZON WIRELESS
FENWAY PARK 5G**

CONCEPTUAL DRAWINGS

2	01/15/19	FOR SUBMITTAL
1	01/07/19	FOR SUBMITTAL
0	12/20/18	FOR SUBMITTAL
E	12/17/18	FOR COMMENT
D	12/12/18	FOR COMMENT
C	11/20/18	FOR COMMENT
B	10/12/18	FOR COMMENT



Dewberry Engineers Inc.
220 SUMMER STREET
10TH FLOOR
BOSTON, MA 02210
PHONE: 617.686.3400
FAX: 617.686.3310



**TYPICAL UPPER LEVEL SUPPORT
ANTENNA MOUNT ATTACHMENT DETAIL** 1
SCALE: N.T.S.

NOTES:

- ASSOCIATED FIBER, COAX, & OTHER EQUIPMENT NOT SHOWN FOR CLARITY.
- ALL VISIBLE ANTENNAS & EQUIPMENT ARE TO BE PAINTED FENWAY GREEN OR TO MATCH SURROUNDINGS PER DIRECTION OF VERIZON C.M. & FENWAY REPRESENTATIVE.
- ALL PROPOSED ANTENNA HEIGHTS ARE APPROXIMATE. FINAL MOUNTING HEIGHT AND LOCATIONS TO BE FIELD VERIFIED AND CONFIRMED WITH VERIZON WIRELESS C.M.

SITE ADDRESS:
4 YAWKEY WAY A.K.A.
4 JERSEY STREET
BOSTON, MA 02215

SHEET TITLE
**ANTENNA MOUNT
DETAILS - III**

SHEET NUMBER

C-7

Site Photographs
Fenway_4_MA (Site #891157) -4 Yawkey Way



Photo 1: Proposed antenna location off of Lansdowne Street.



Photo 2: Proposed antenna location near gate K.

Site Photographs
Fenway_4_MA (Site #891157) -4 Yawkey Way



Photo 3: Proposed antenna locations at Gate D.



Photo 4: Proposed antenna location in upper deck area.

Site Photographs
Fenway_4_MA (Site #891157) -4 Yawkey Way



Photo 5: Proposed antenna location on Penthouse.

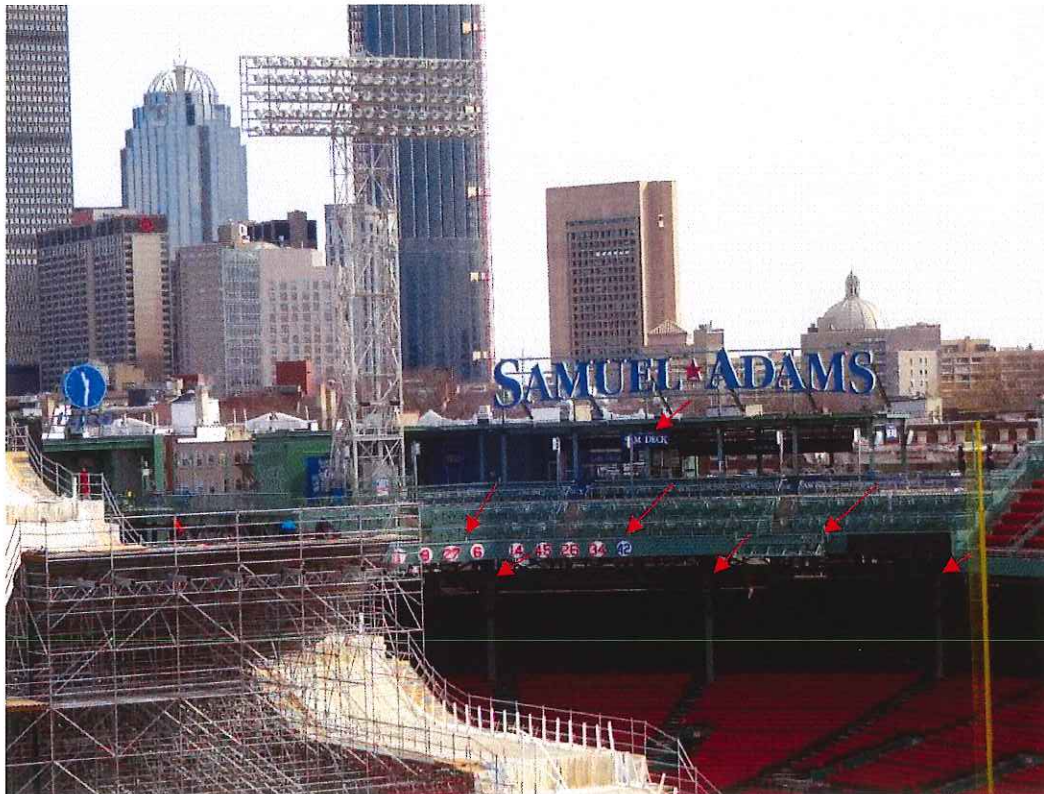


Photo 6: Proposed antenna locations in right field stands.

Site Photographs
Fenway_4_MA (Site #891157) -4 Yawkey Way



Photo 7: Proposed antenna locations along the west side of the field.



Photo 8: Proposed antenna locations along the east side of the field.

Site Photographs
Fenway_4_MA (Site #891157) -4 Yawkey Way



Photo 9: Proposed antenna locations on scoreboards, in the outfield



Photo 10: Proposed antennas in the leftfield stands.

Site Photographs
Fenway_4_MA (Site #891157) -4 Yawkey Way



Photo 1: Proposed antenna location off of Lansdowne Street.



Photo 2: Proposed antenna location near gate K.

Site Photographs
Fenway_4_MA (Site #891157) -4 Yawkey Way



Photo 3: Proposed antenna locations at Gate D.



Photo 4: Proposed antenna location in upper deck area.

Site Photographs
Fenway_4_MA (Site #891157) -4 Yawkey Way



Photo 5: Proposed antenna location on Penthouse.

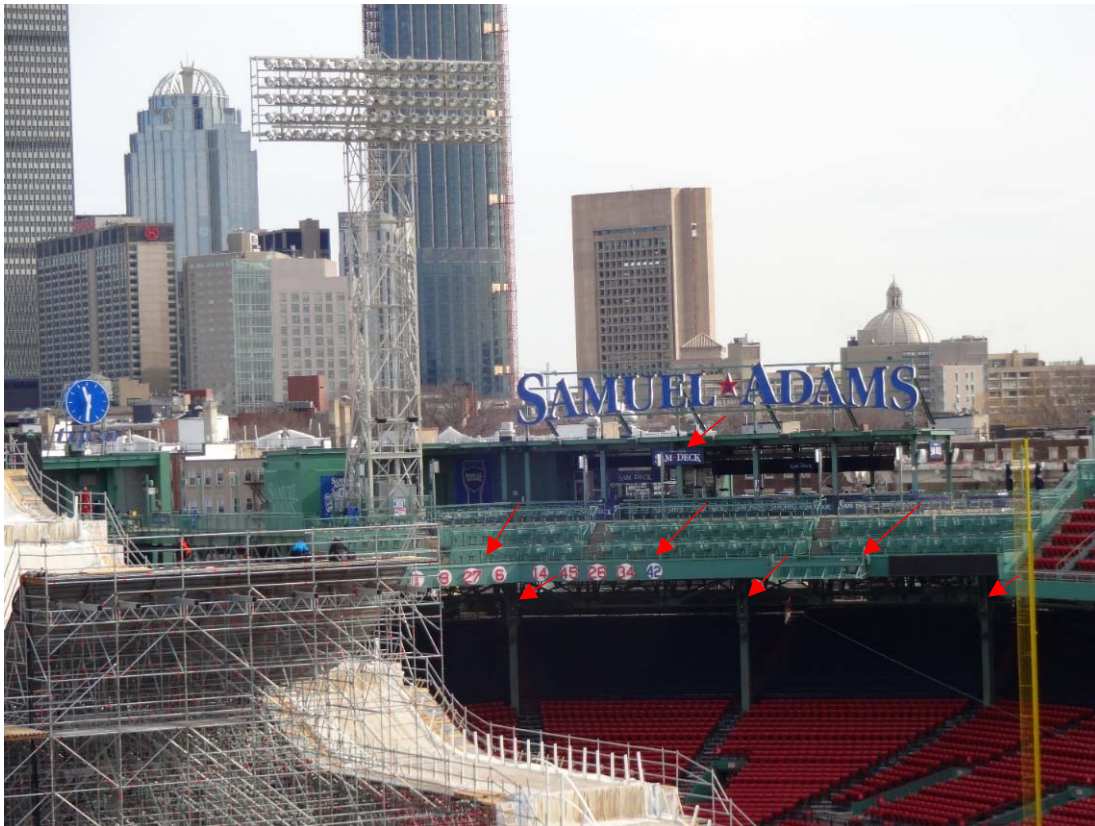


Photo 6: Proposed antenna locations in right field stands.

Site Photographs
Fenway_4_MA (Site #891157) -4 Yawkey Way



Photo 7: Proposed antenna locations along the west side of the field.



Photo 8: Proposed antenna locations along the east side of the field.

Site Photographs
Fenway_4_MA (Site #891157) -4 Yawkey Way



Photo 9: Proposed antenna locations on scoreboards, in the outfield

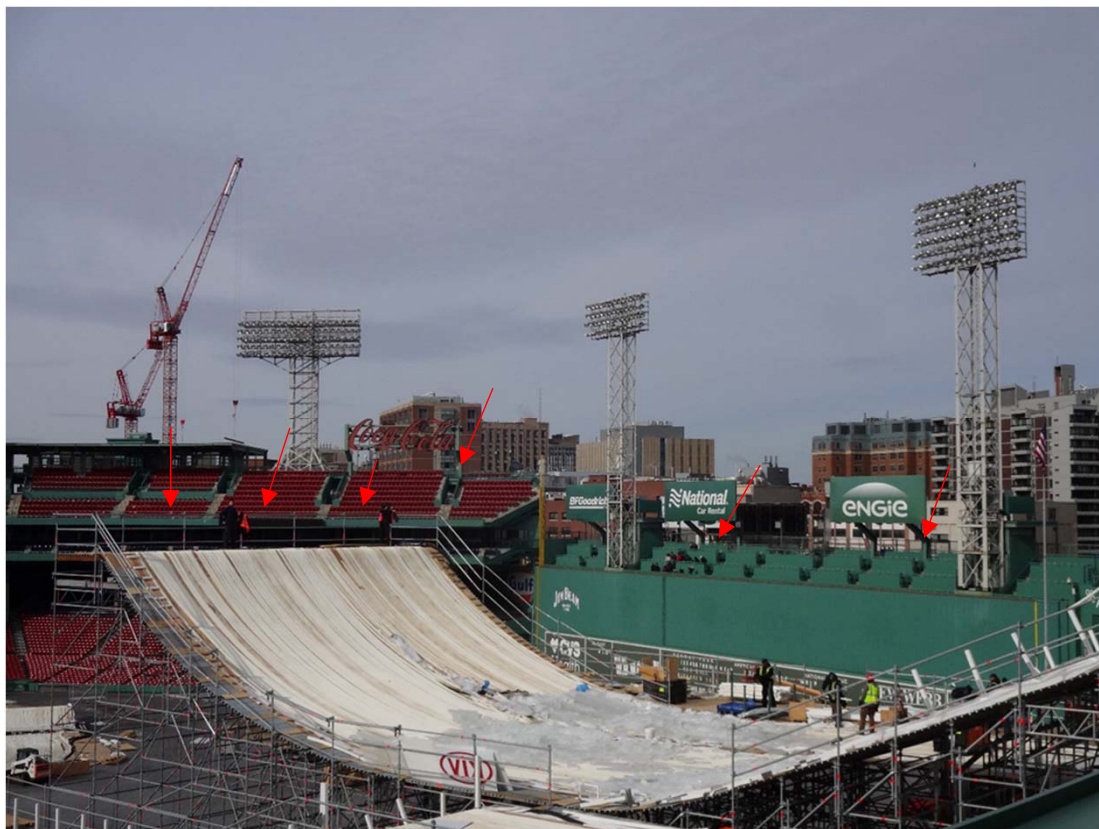


Photo 10: Proposed antennas in the leftfield stands.