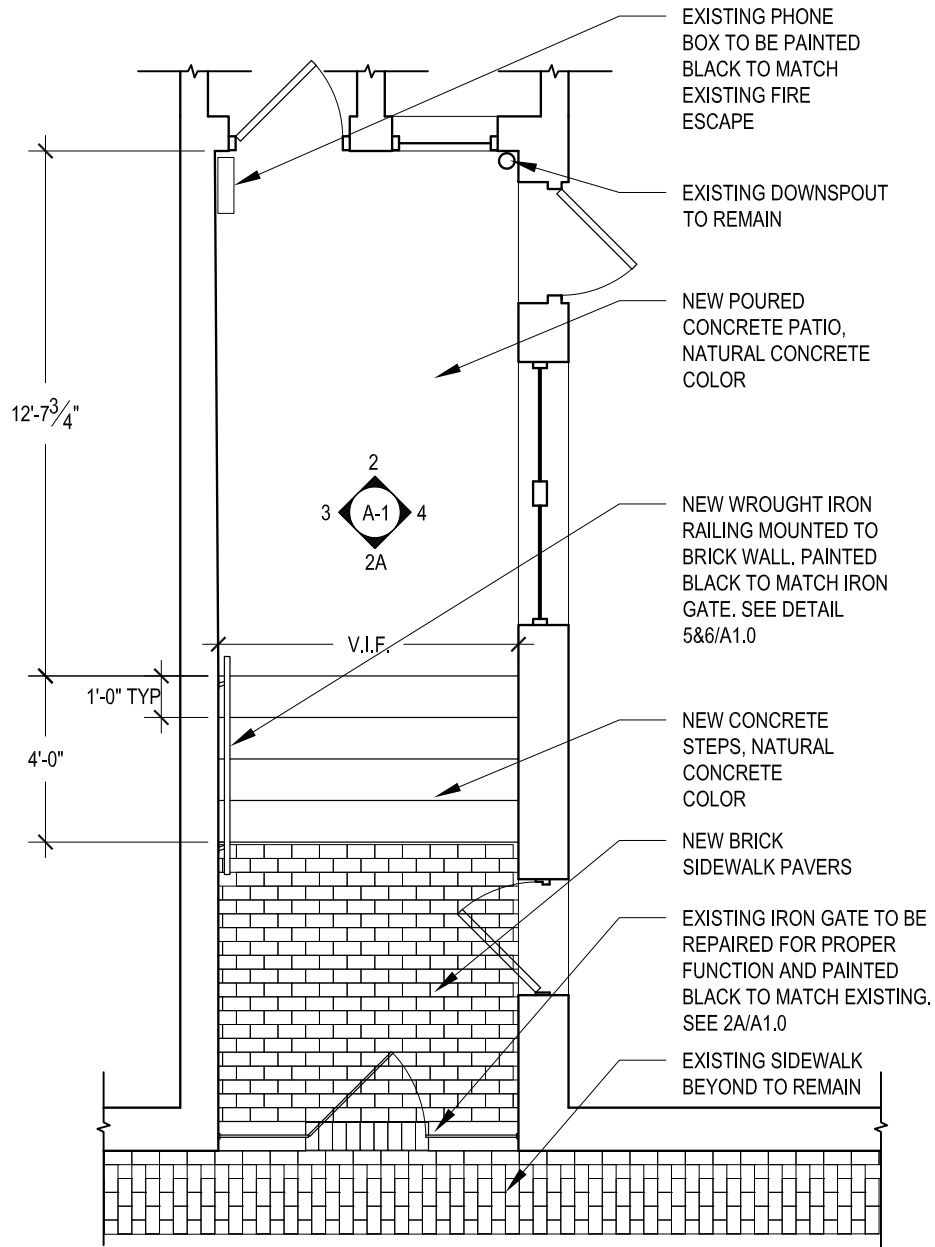




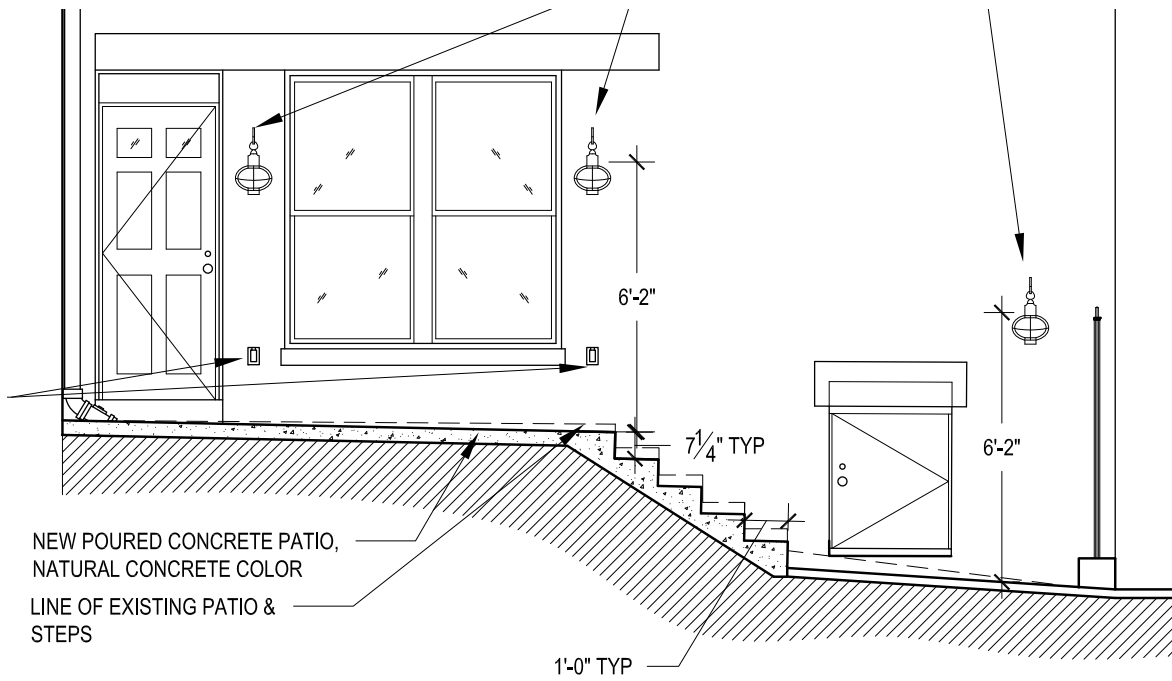
① VIEW FROM STREET



② VIEW FROM SIDEWALK



3. PROPOSED WORK



4. SECTION LOOKING WEST



5. CONDITION OF STAIR



⑥. PROPER FUNCTION OF EMERGENCY EGRESS DOOR



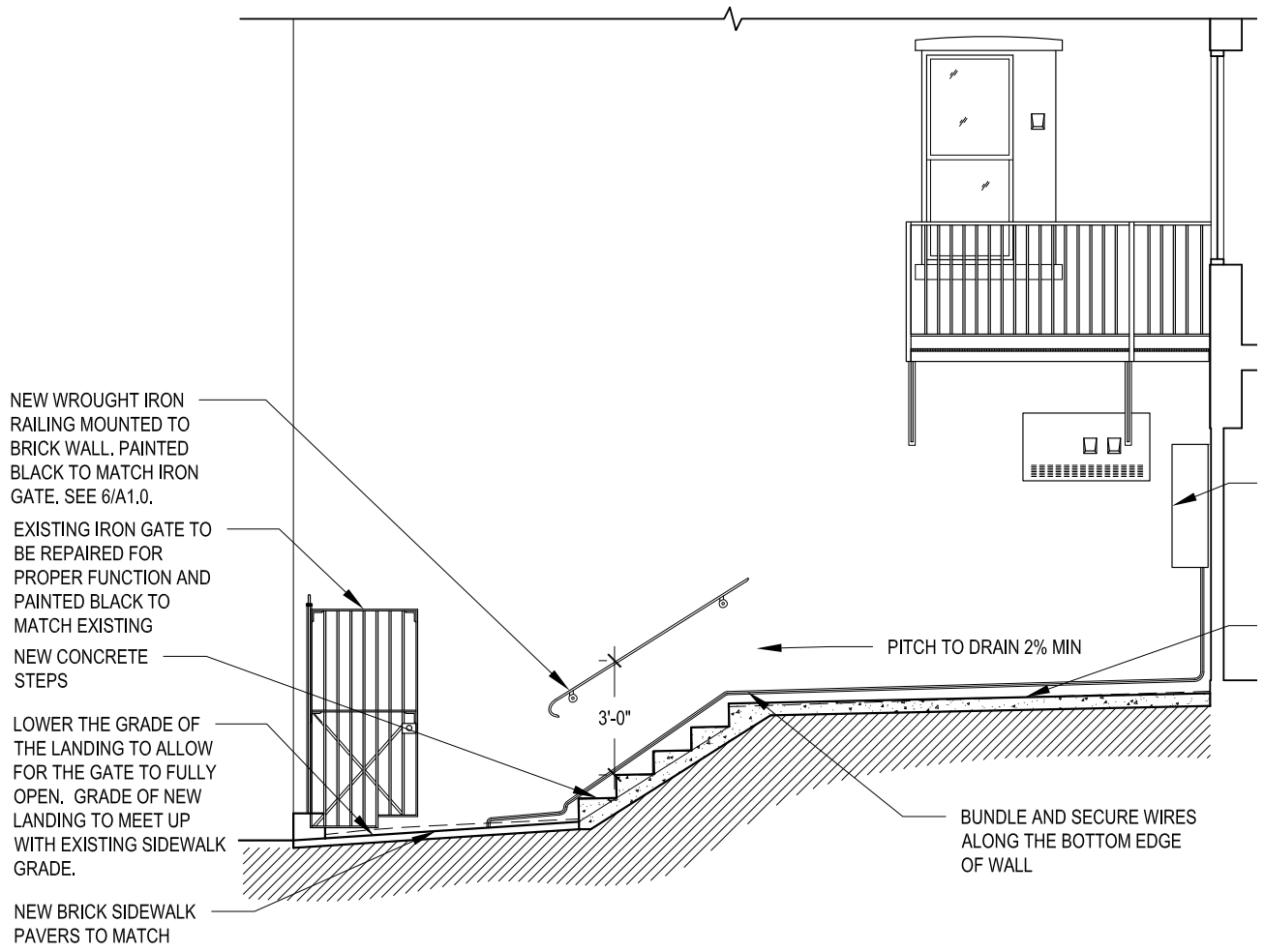
⑦. PROPER FUNCTION OF GATE



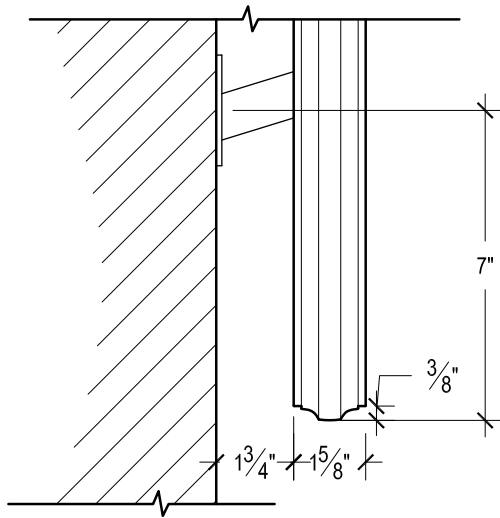
8. CONDITION OF STAIR



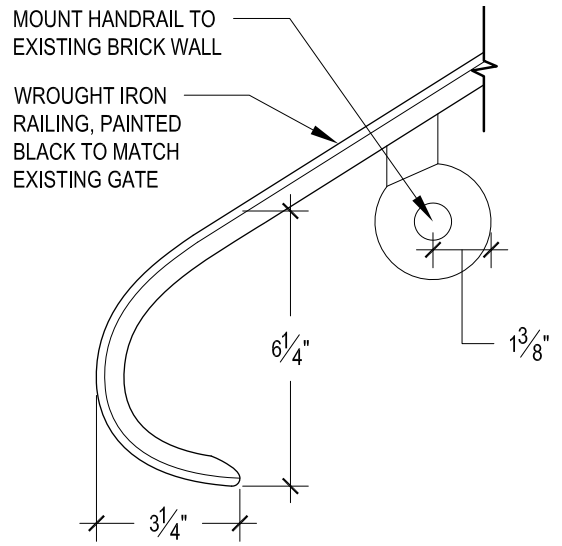
9. PREVIOUS IMAGE OF STAIR



10. SECTION LOOKING EAST



11. HANDRAIL PLAN



12. HANDRAIL ELEVATION



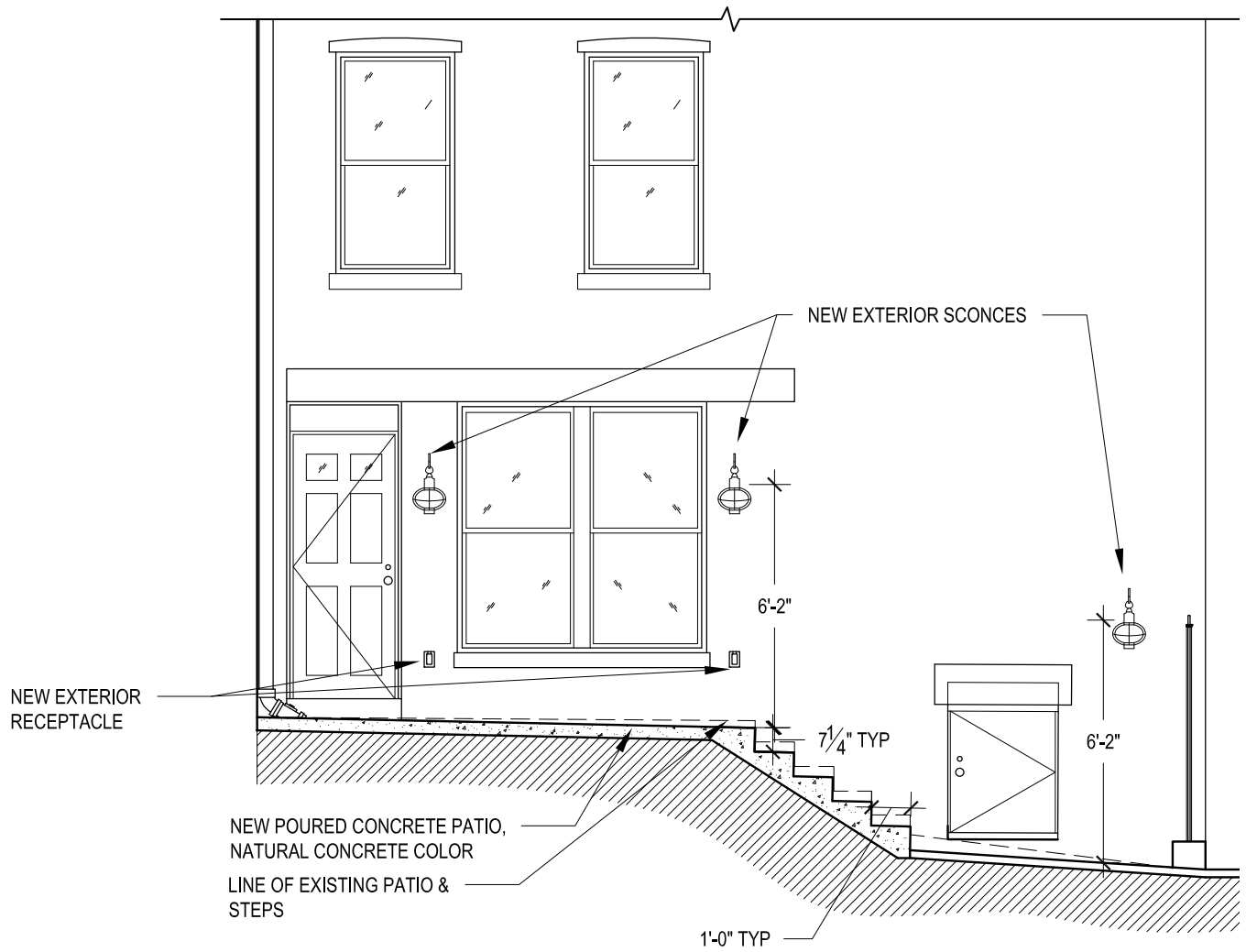
13. HANDRAIL PRECEDENT AT 54 REVERE ST.



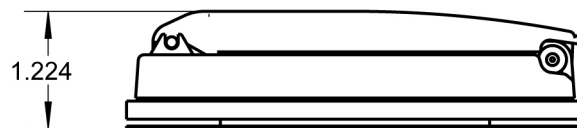
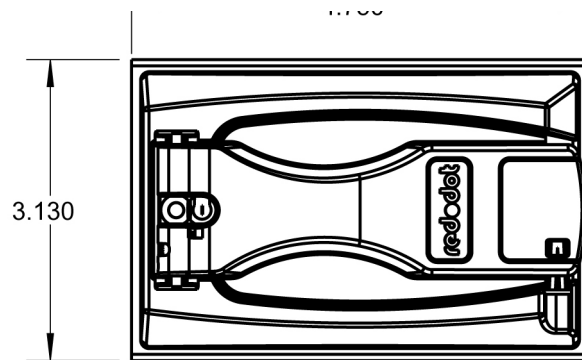




15. EXISTING EXTERIOR LIGHTING



16. PROPOSED WALL SCONCE AND RECEPTACLE LOCATIONS



17. PROPOSED EXTERIOR RECEPTACLE



18. PROPOSED WALL SCONCE, COOPER OUTDOOR LIGHT FROM HOUSE OF ANTIQUE HARDWARE



19. PRECEDENT LIGHT AT 61 JOY ST.