



402

401

302

301

205

204

203

202

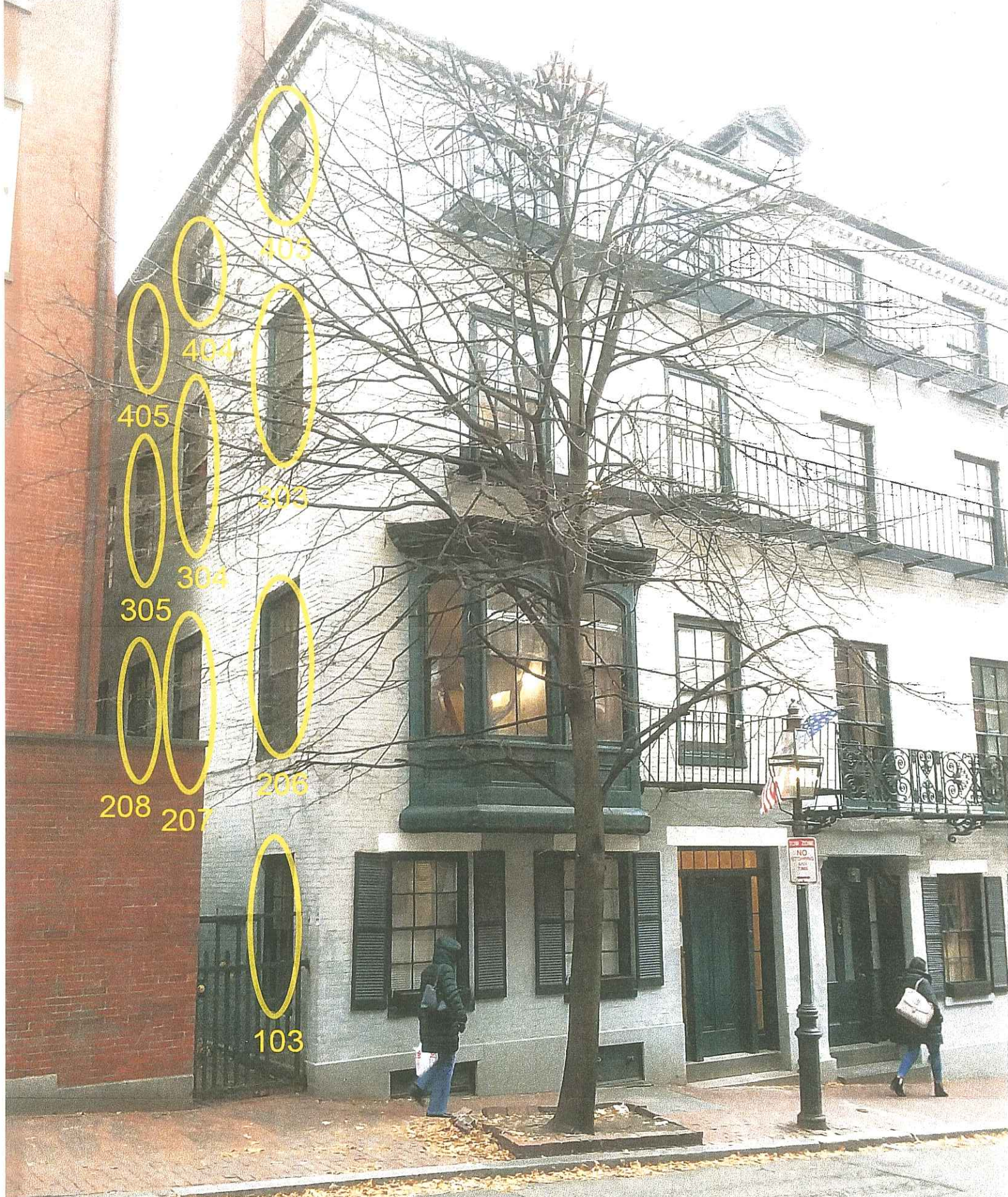
201

102

101

NO STOPPING ANY TIME

8 Joy Street



403

404

405

303

304

305

206

208

207

103

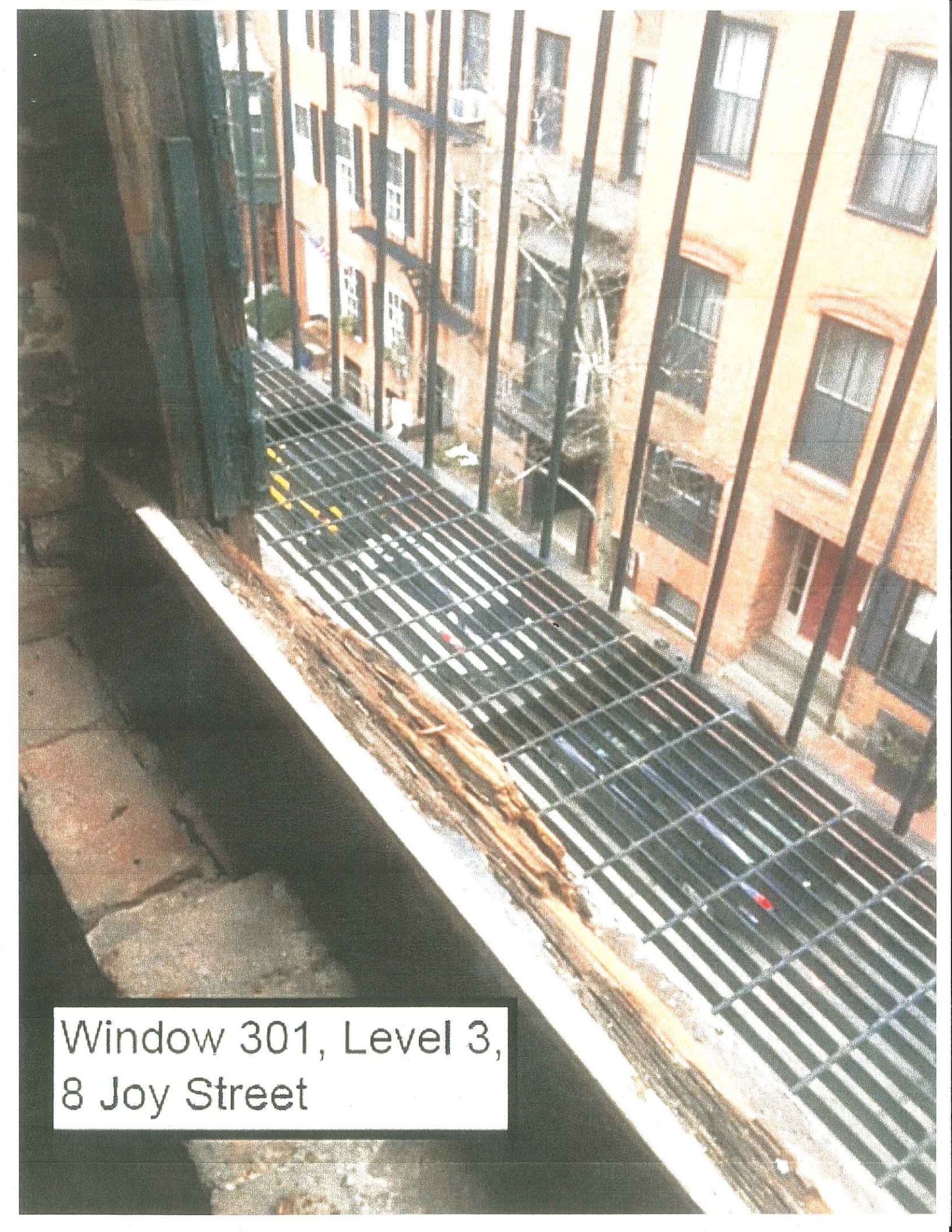
8 Joy Street



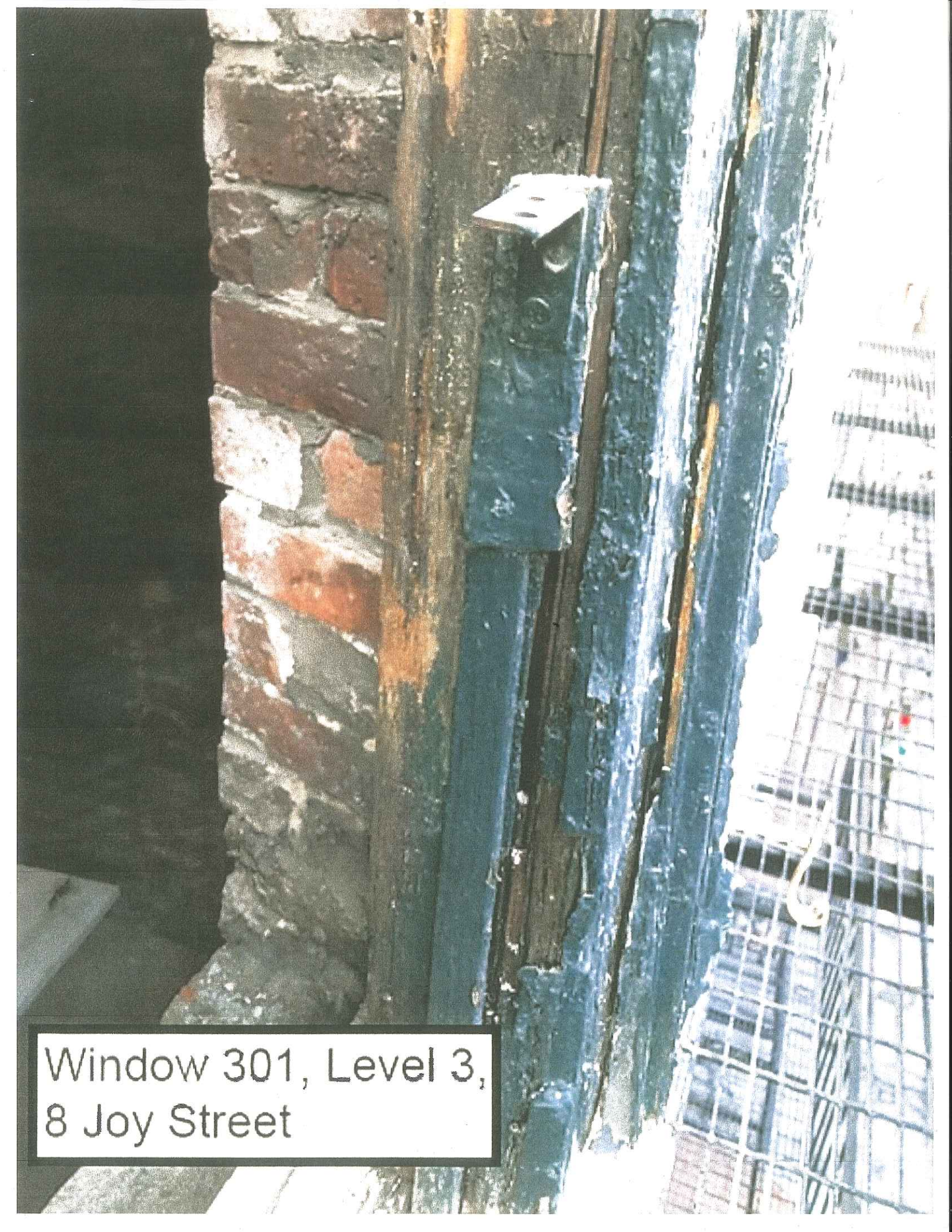
Window 103, Level 1,
8 Joy Street



Window 302, Level 3,
8 Joy Street



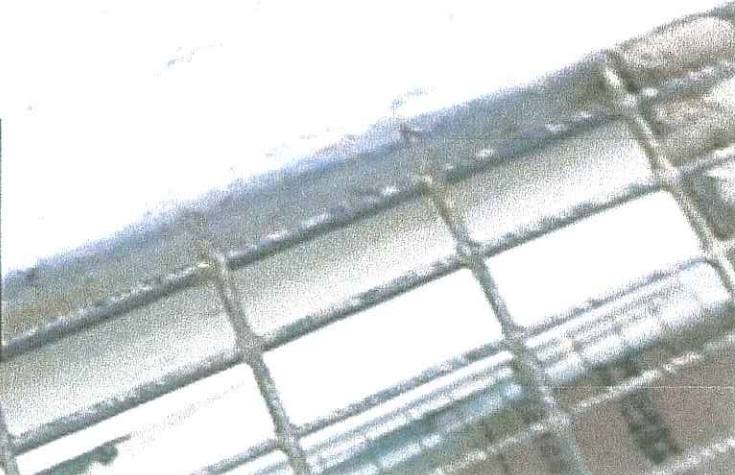
Window 301, Level 3,
8 Joy Street

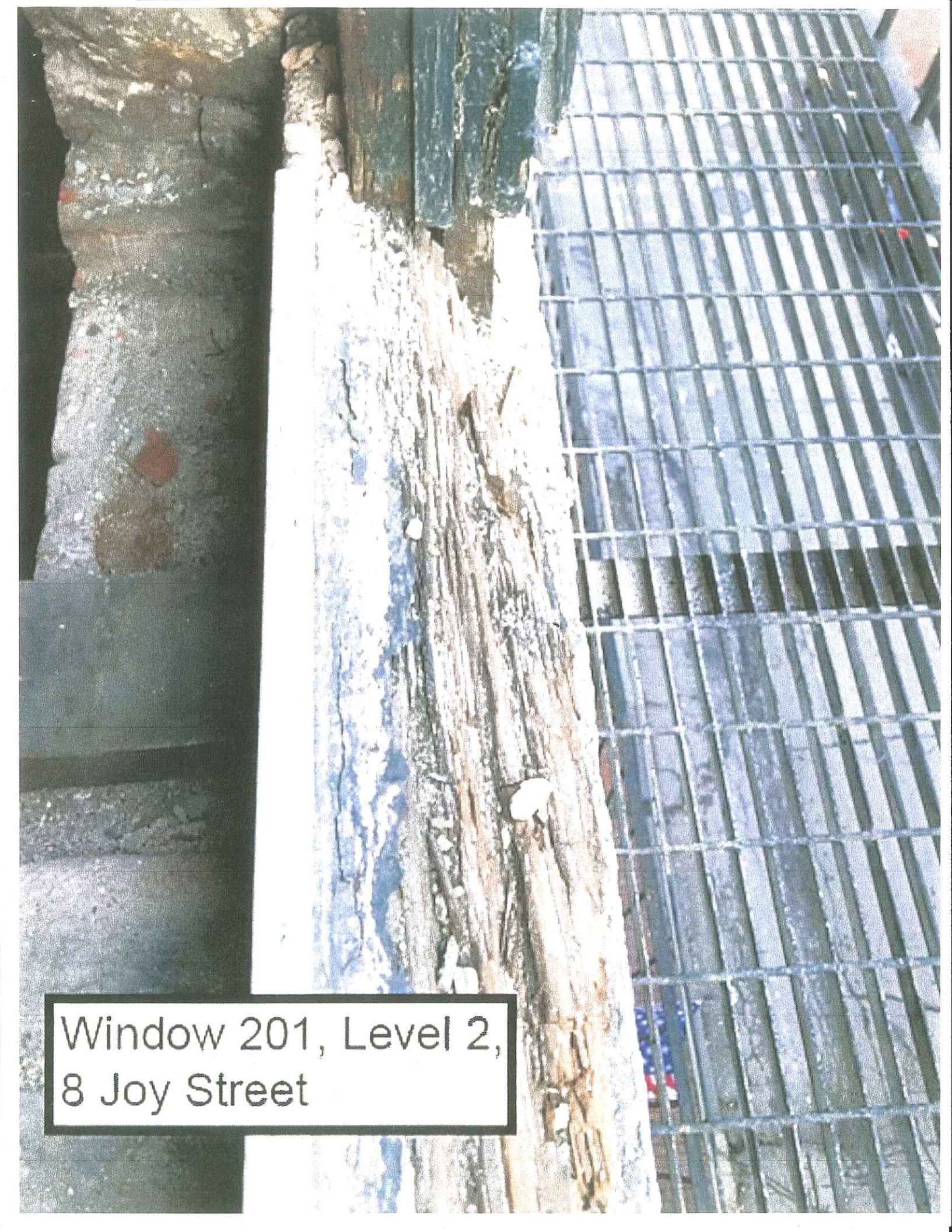


Window 301, Level 3,
8 Joy Street

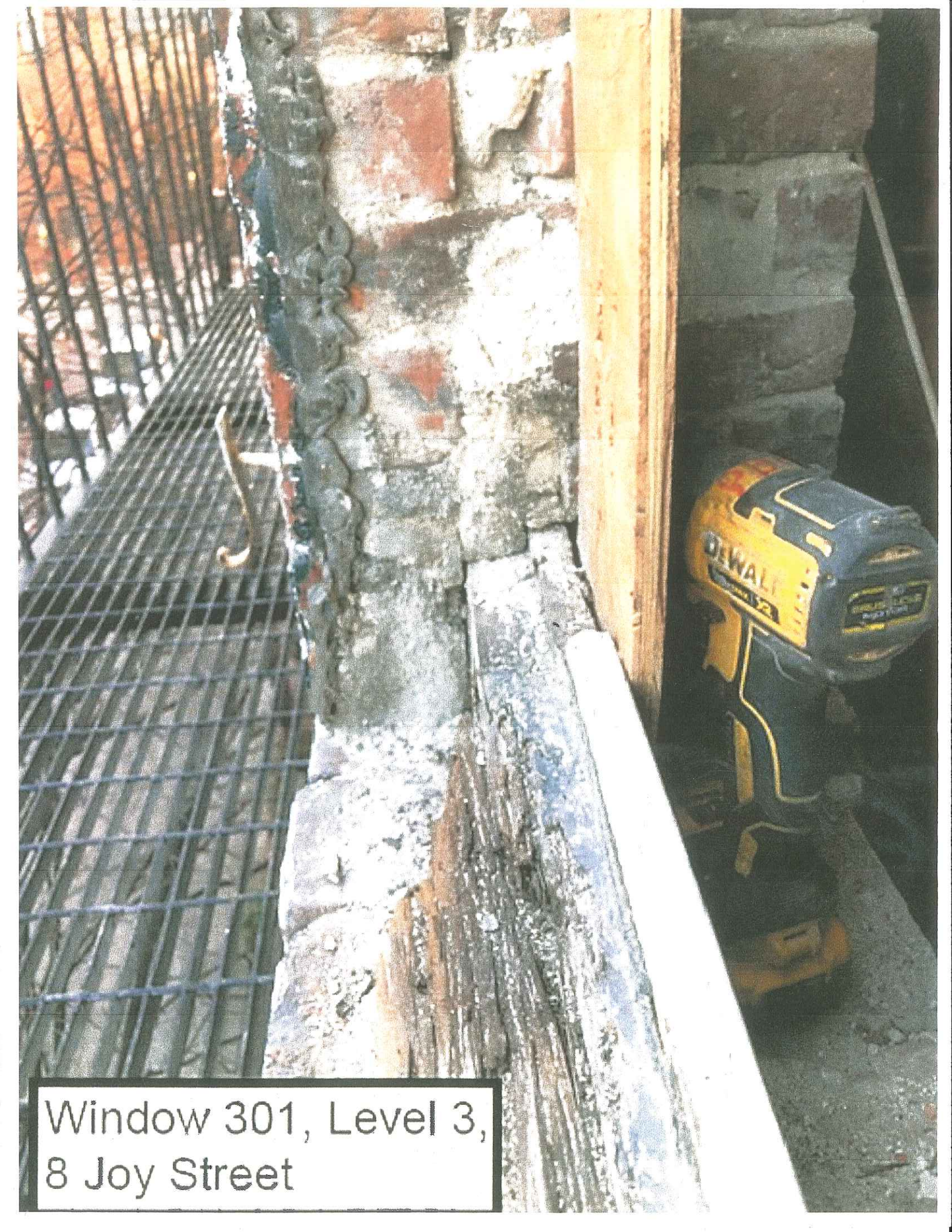


Window 402, Level 4,
8 Joy Street






Window 201, Level 2,
8 Joy Street

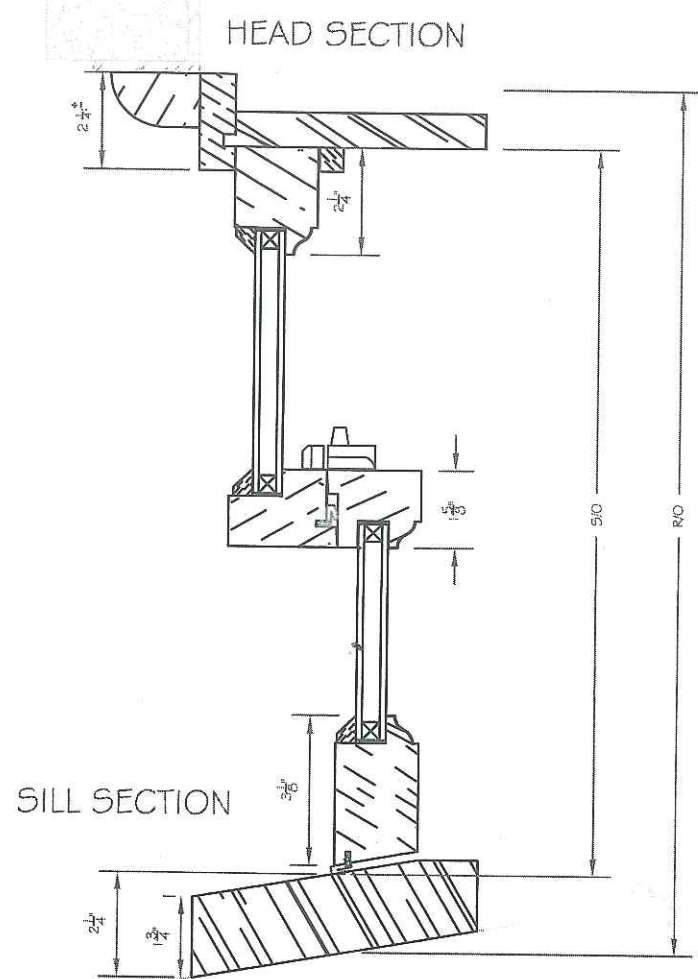
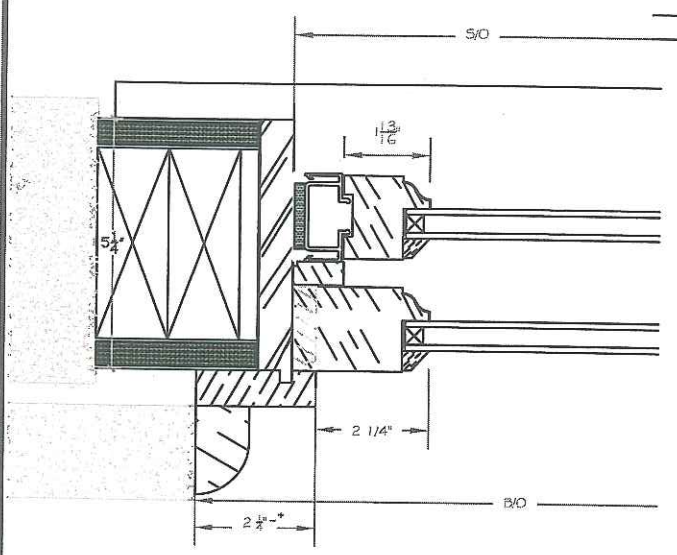
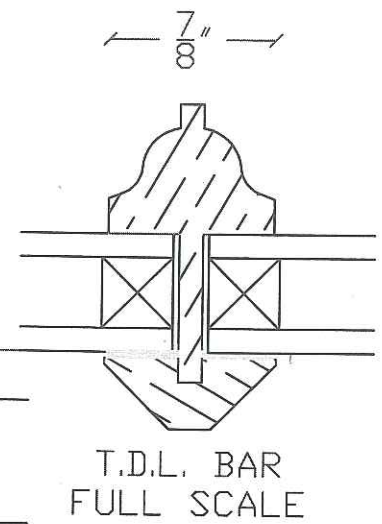
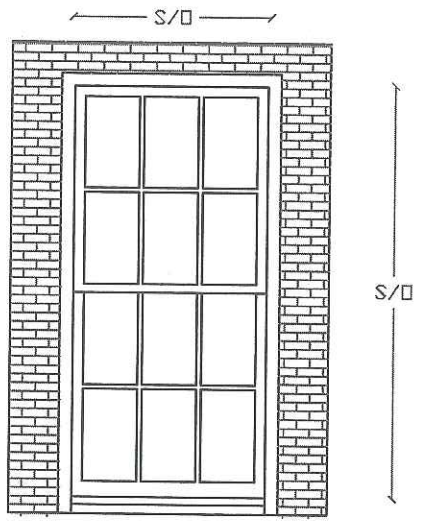


Window 301, Level 3,
8 Joy Street



Window 203, Level 2,
8 Joy Street

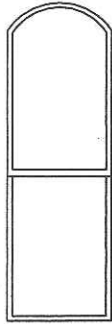
JB PROPER BOSTONIAN SH WINDOW UNIT



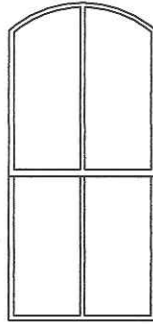
SHEET 1	JB PB SH REPL/UNIT - 6/6
OF 1	DATE: 02/26/16
DEALER: JB SASH & DOOR CO., INC.	CHECK:
NUMBER:	
DRAWN: R.L.B.	

Window Type

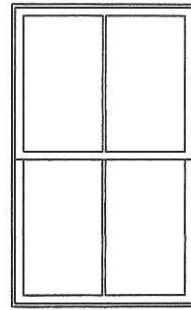
A



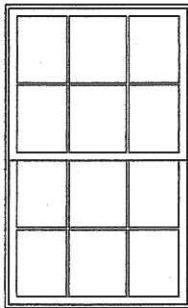
B



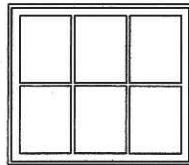
C



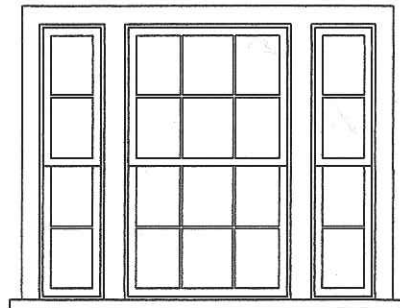
D



E



F



WINDOW SCHEDULE / 8 JOY STREET

January, 30, 2019

Window Number	Visibility			Type	Treatment		Comments
	Visible From Public Way	Casing Visible From Public Way	Not Visible From Public Way		Repair	Replace In Kind	
101	X	--	--	D	--	EXT. Casing & Sash	
102	X	--	--	D	--	EXT. Casing & Sash	
103	X	--	--	D	--	EXT. Casing & Sash	
104	--	X	--	D	EXT. Casing	Sash	
105	--	X	--	D	EXT. Casing	Sash	
106	--	--	--	D	EXT. Casing	Sash	
107	--	--	X	D	--	--	New Cashing and Sash
108	--	--	X	D	--	--	New Cashing and Sash
109	--	--	X	D	--	--	New Cashing and Sash
110	--	--	X	F	--	--	New Cashing and Sash
201	X	--	--	D	--	EXT. Casing & Sash	
202	X	--	--	A	EXT. Casing & Sash	--	
203	X	--	--	B	EXT. Casing & Sash	--	
204	X	--	--	B	EXT. Casing & Sash	--	
205	X	--	--	A	EXT. Casing & Sash	--	
206	X	--	--	C	EXT. Casing & Sash	--	
207	--	X	--	C	EXT. Casing	Sash	
208	--	X	--	D	EXT. Casing	Sash	
209	--	X	--	D	EXT. Casing	Sash	
210	--	--	X	D	--	--	New Cashing and Sash
211	--	--	X	D	--	--	New Cashing and Sash
212	--	--	X	D	--	--	New Cashing and Sash
301	X	--	--	D	EXT. Casing	Sash	
302	X	--	--	D	EXT. Casing	Sash	
303	X	--	--	D	EXT. Casing	Sash	
304	--	X	--	D	EXT. Casing	Sash	
305	--	X	--	D	EXT. Casing	Sash	
306	--	X	--	D	EXT. Casing	Sash	
307	--	--	X	D	EXT. Casing	Sash	
401	X	--	--	E	EXT. Casing	Sash	
402	X	--	--	E	EXT. Casing	Sash	
403	X	--	--	E	EXT. Casing	Sash	
404	--	X	--	E	EXT. Casing	Sash	
405	--	X	--	E	EXT. Casing	Sash	
406	--	X	--	E	EXT. Casing	Sash	
407	--	--	X	E	EXT. Casing	Sash	
408	--	--	X	E	EXT. Casing	Sash	

Note: All new and replacement sash to be custom true divided lite double glazed wood windows.
Casing and sash to be painted to match existing color.