



BHAC February 21, 2019

**85 Pinckney St**  
85 Pinckney Street Boston, MA

## Existing Street View

**MEYER & MEYER**  
I N C.  
ARCHITECTURE & INTERIORS  
396 Commonwealth Avenue  
Boston Massachusetts 02215  
6 1 7 2 6 6 0 5 5 5  
[www.meyrandmeyerarchitects.com](http://www.meyrandmeyerarchitects.com)





BHAC February 21, 2019

**85 Pinckney St**

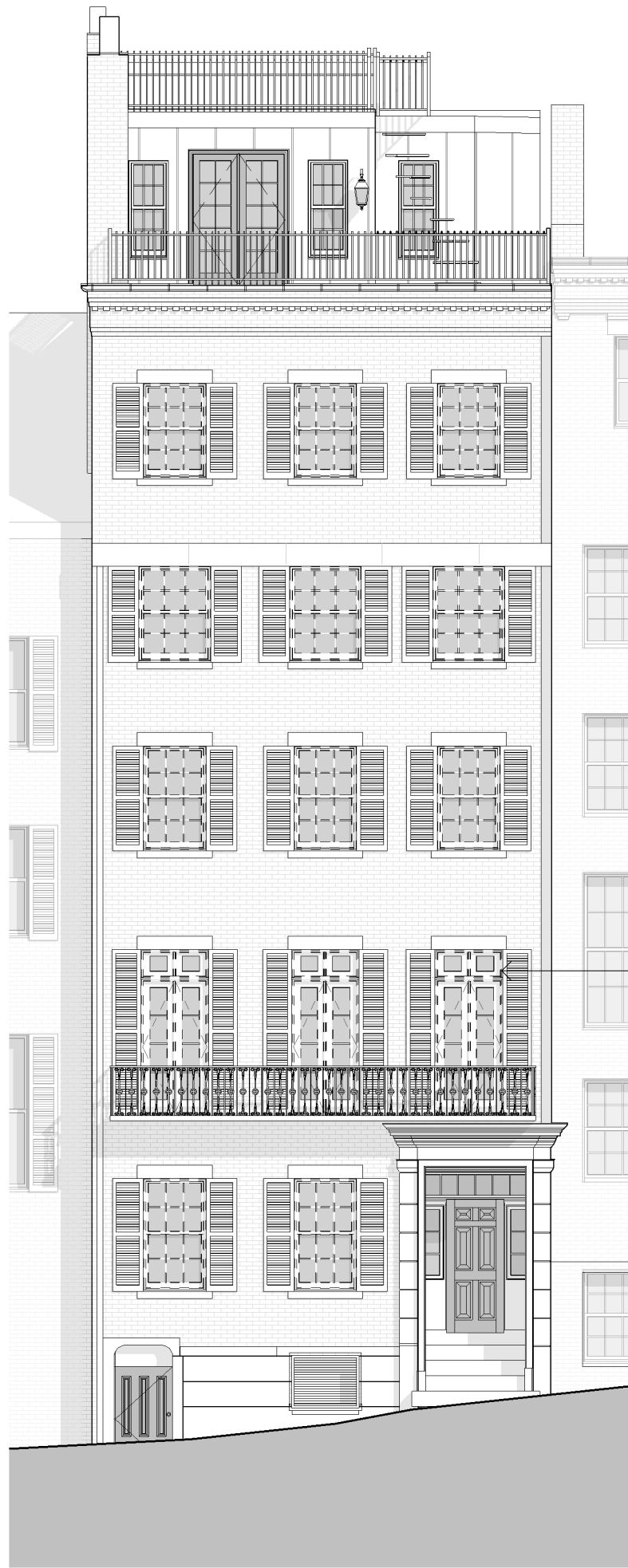
85 Pinckney Street Boston, MA

**Existing Street View**

**MEYER & MEYER**  
I N C.  
ARCHITECTURE & INTERIORS

396 Commonwealth Avenue  
Boston Massachusetts 02215  
6 1 7 2 6 6 0 5 5 5  
[www.meyerandmeyerarchitects.com](http://www.meyerandmeyerarchitects.com)





REMOVE EXISTING DOORS  
AND TRANSOMS

BHAC February 21, 2019

85 Pinckney St

85 Pinckney Street Boston, MA

# Existing South Elevation

1/8" = 1'-0"

MEYER & MEYER  
I N C.  
ARCHITECTURE & INTERIORS

396 Commonwealth Avenue  
Boston, Massachusetts 02215  
6 1 7 2 6 6 0 5 5 5  
www.meyerandmeyerarchitects.com

Roof @ Front  
132' - 10 13/16"

Sixth Floor SF  
122' - 10 5/16"

Fifth Floor SF  
111' - 6 5/16"

Fourth Floor SF  
102' - 5 5/16"

Third Floor SF  
92' - 0 5/16"

Second Floor SF  
79' - 11 13/16"

First Floor SF  
69' - 2 3/4"

Basement Slab  
60' - 9 13/16"



NEW WOOD COTTAGE STYLE WINDOWS TO  
REPLACE EXISTING FRENCH DOORS WITH  
TRANSOM

BHAC February 21, 2019

85 Pinckney St

85 Pinckney Street Boston, MA

Proposed South Elevation

1/8" = 1'-0"

MEYER & MEYER  
I N C.  
ARCHITECTURE & INTERIORS

396 Commonwealth Avenue  
Boston Massachusetts 02215  
6 1 7 2 6 6 0 5 5 5  
www.meyerandmeyerarchitects.com

COTTAGE STYLE DOUBLE HUNG WINDOWS WERE PREVALENT AT BUILDINGS ON LOUISBURG SQUARE IN HISTORIC PHOTOS



Louisburg Square 1915

BHAC February 21, 2019

85 Pinckney St

85 Pinckney Street Boston, MA

Louisburg Square Photo

MEYER & MEYER  
I N C.  
ARCHITECTURE & INTERIORS

396 Commonwealth Avenue  
Boston Massachusetts 02215  
6 1 7 2 6 6 0 5 5 5  
www.meyerandmeyerarchitects.com



COTTAGE STYLE DOUBLE HUNG WINDOWS WERE PREVALENT AT BUILDINGS ON LOUISBURG SQUARE IN HISTORIC PHOTOS



Louisburg Square 1903

BHAC February 21, 2019

85 Pinckney St  
85 Pinckney Street Boston, MA

Louisburg Square Photo

MEYER & MEYER  
I N C.  
ARCHITECTURE & INTERIORS  
396 Commonwealth Avenue  
Boston Massachusetts 02215  
6 1 7 2 6 6 0 5 5 5  
www.meyerandmeyerarchitects.com





81 Pinckney Street

BHAC February 21, 2019

85 Pinckney St

85 Pinckney Street Boston, MA

Louisburg Square Photo

MEYER & MEYER  
I N C.  
ARCHITECTURE & INTERIORS

396 Commonwealth Avenue  
Boston Massachusetts 02215  
6 1 7 2 6 6 0 5 5 5  
www.meyerandmeyerarchitects.com





7 Louisburg Square

BHAC February 21, 2019

85 Pinckney St  
85 Pinckney Street Boston, MA

## Louisburg Square Photo

MEYER & MEYER  
I N C.  
ARCHITECTURE & INTERIORS  
396 Commonwealth Avenue  
Boston Massachusetts 02215  
6 1 7 2 6 6 0 5 5 5  
www.meyerandmeyerarchitects.com





11 Louisburg Square

BHAC February 21, 2019

85 Pinckney St

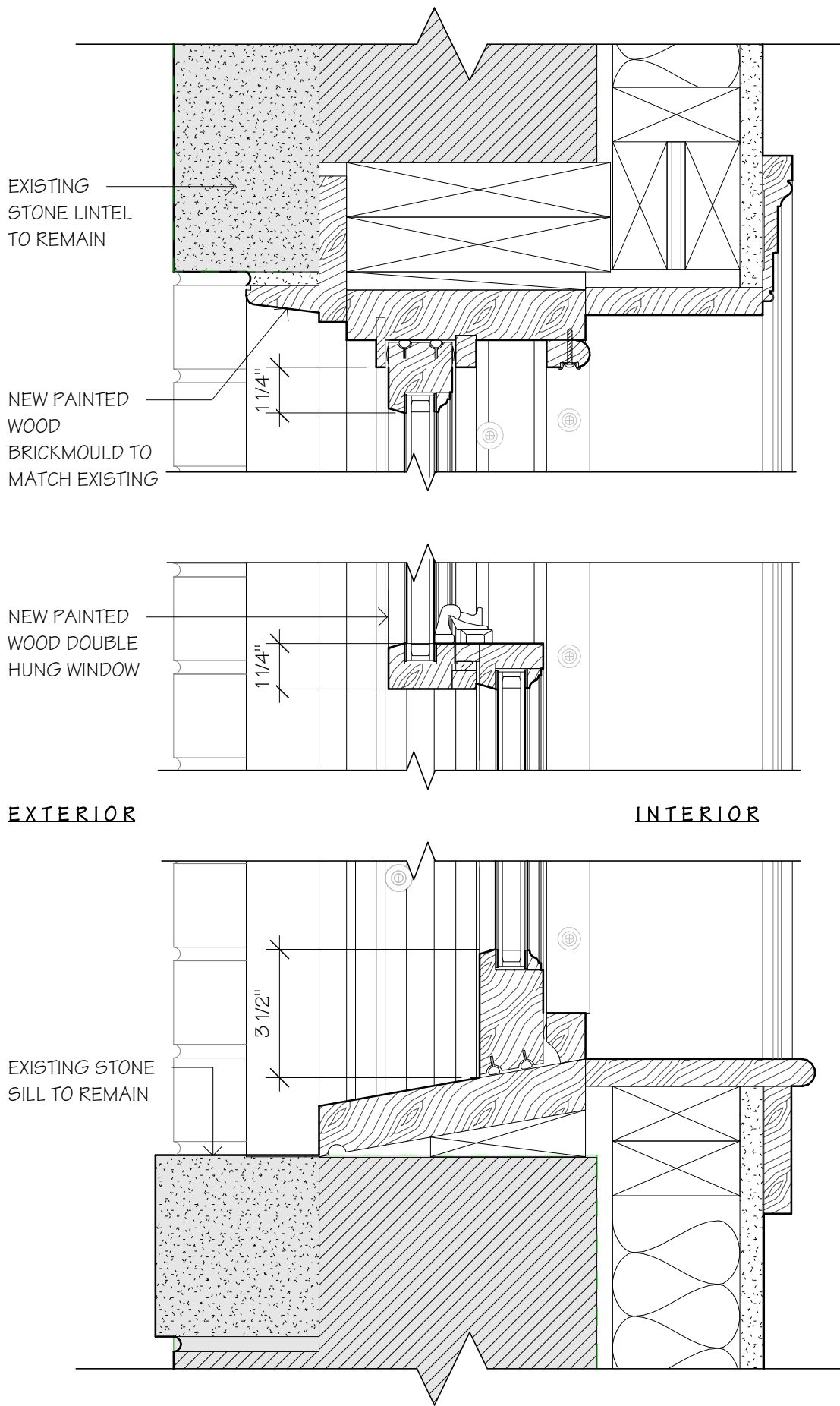
85 Pinckney Street Boston, MA

Louisburg Square Photo

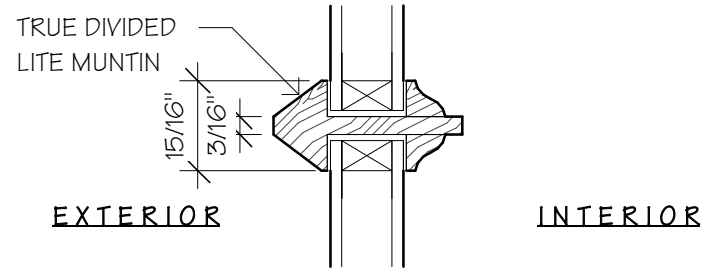
MEYER & MEYER  
I N C.  
ARCHITECTURE & INTERIORS

396 Commonwealth Avenue  
Boston Massachusetts 02215  
6 1 7 2 6 6 0 5 5 5  
www.meyerandmeyerarchitects.com





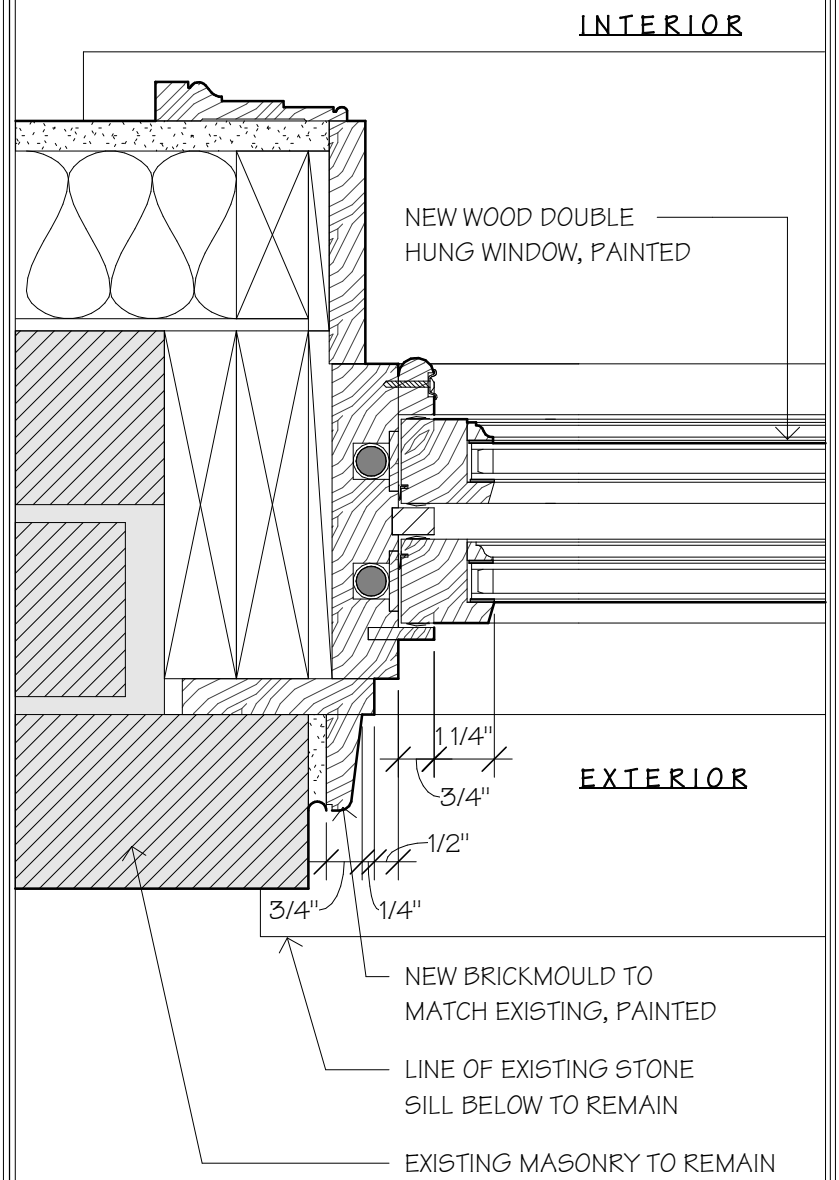
1 Head and Sill Details  
3" = 1'-0"



2 Typical Muntin Detail  
6" = 1'-0"

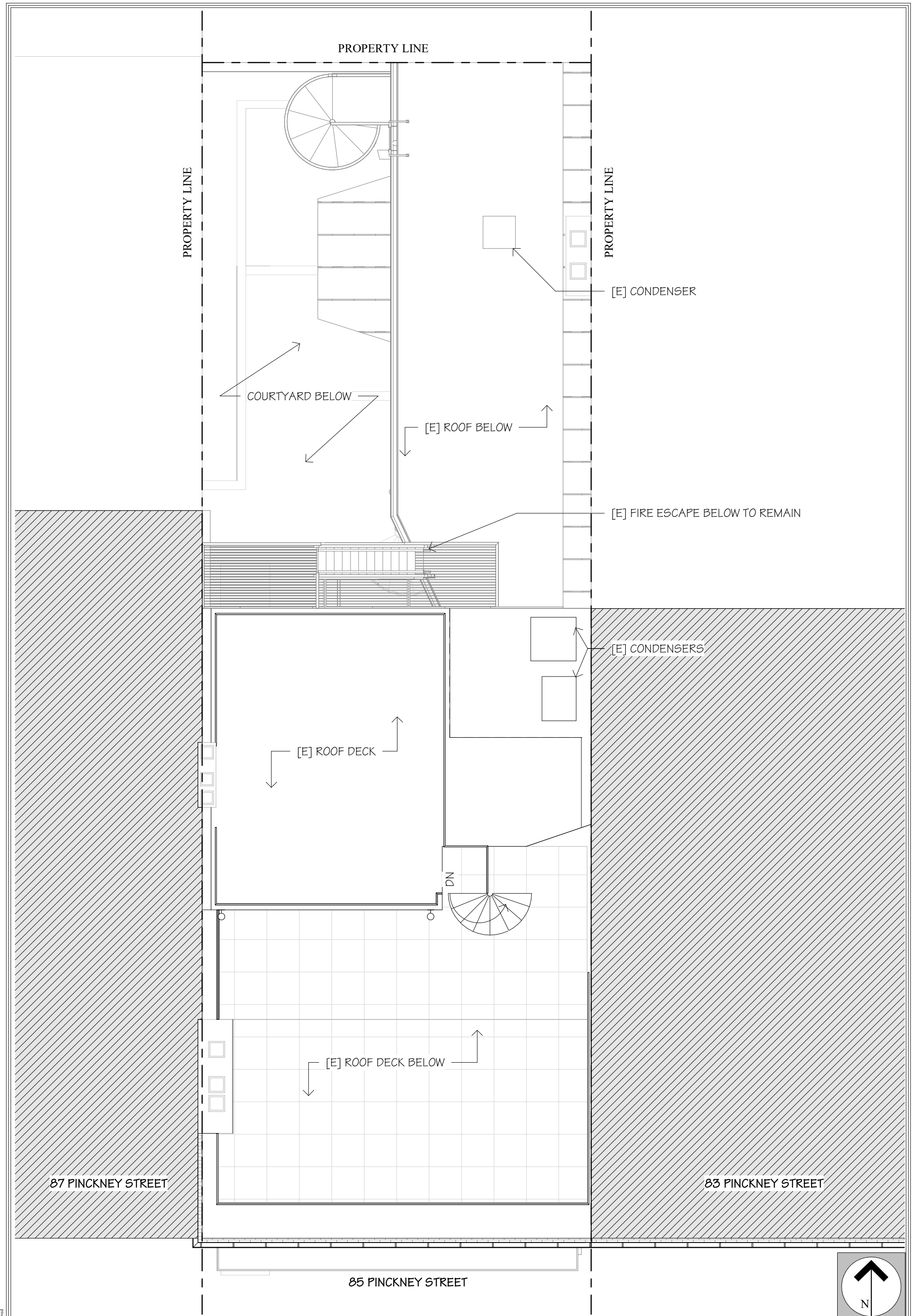
**TYPICAL WINDOW SPECIFICATIONS:**

- SOLID WOOD, DOUBLE-HUNG WINDOW TO MEET ENERGY CODE REQUIREMENTS
- WINDOWS TO BE PAINTED TO MATCH EXISTING
- TRUE DIVIDED LITE



3 Jamb Detail  
3" = 1'-0"





BHAC February 21, 2019

**85 Pinckney St**  
85 Pinckney Street Boston, MA

**Existing & Proposed Site Plan**

3/16" = 1'-0"

**MEYER & MEYER**  
I N C.  
ARCHITECTURE & INTERIORS  
396 Commonwealth Avenue  
Boston Massachusetts 02215  
6 1 7 2 6 6 0 5 5 5  
www.meyerandmeyerarchitects.com

© 2017 - Meyer & Meyer, Inc. - All Rights Reserved