

TRADESMAN

EXTERIOR SIGNAGE

NOVEMBER 28, 2018



selbert perkins design

5 Water Street, Arlington MA 02476
T 781.574.6605 | F 781.574.6606



selbert perkins design
collaborative inc.

5 Water Street, Arlington MA 02475
T 781.574.6653 | F 781.574.6656

Selbert Perkins Design Collaborative, Inc. © 2018

No portion of this drawing may be reproduced without written consent of Selbert Perkins Design Collaborative, Inc.

The design elements represented on this sheet and related sheets are for design intent only. Selbert Perkins Design Collaborative does not represent that the design of the elements on the sheets are able to be fabricated entirely as shown. Contractor/fabricator to review documents for code compliance, contractability, structural and performance soundness. Contractor/fabricator to notify Selbert Perkins Design Collaborative in the event of concern or disagreement with the contractability and design intent of the elements as depicted on the sheets.

client:

Tradesman

project:

Exterior Building Signage

date:

28 November 2018

revisions:

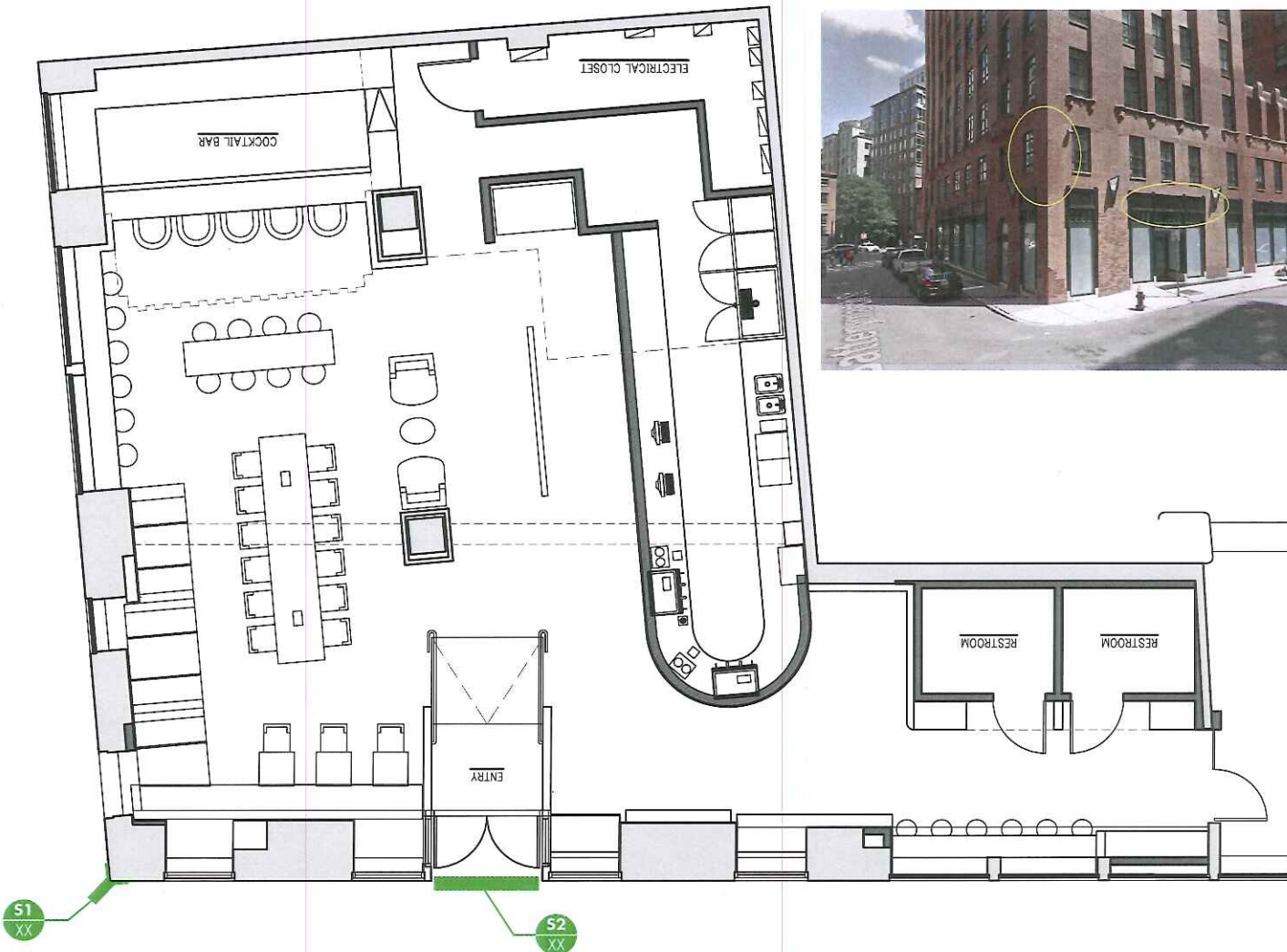
rev	descip	by	date

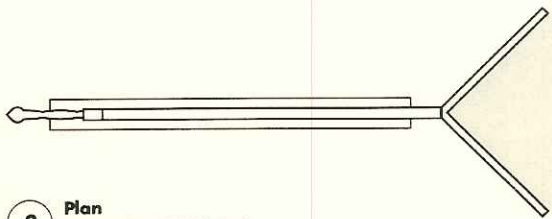
title:

Sign Location
plan

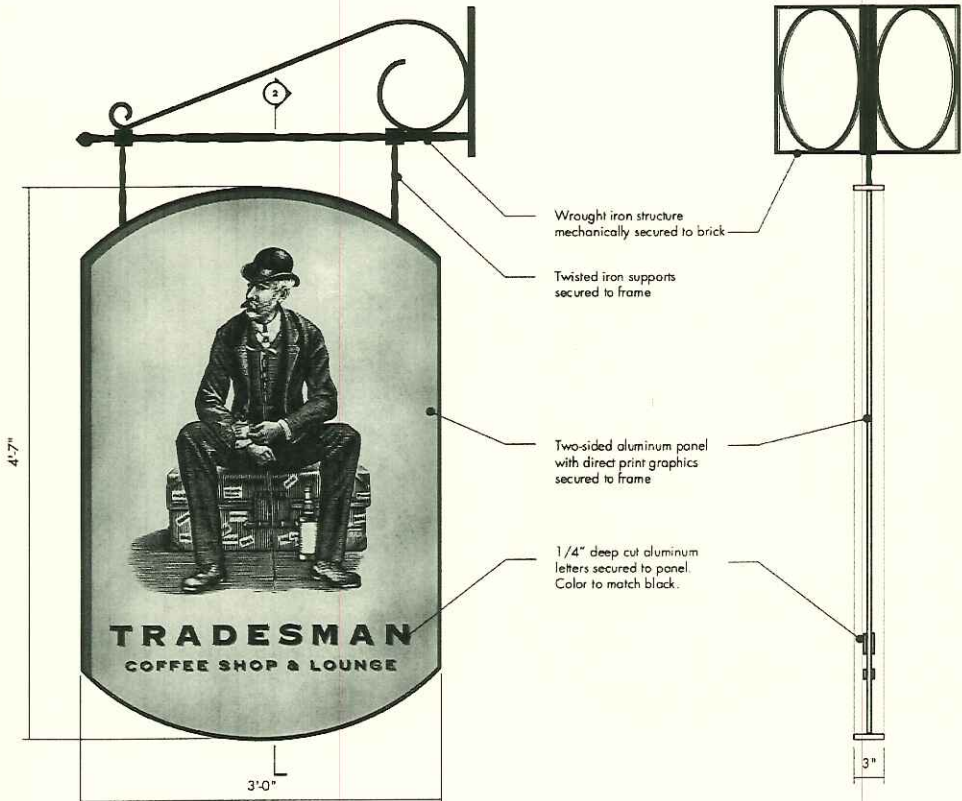
sheet:

2





3 Plan
scale: 1" = 1' - 0"



1 Front Elevation, two-sided sign
scale: 1" = 1' - 0"

2 Section
scale: 1" = 1' - 0"



4 In Situ
scale: NTS



selbert perkins design
collaborative inc.

2 West Street, Arlington MA 02475
781.574.6400 | 878.574.6400

Selbert Perkins Design Collaborative, Inc. © 2018

No portion of this drawing may be reproduced without written consent of Selbert Perkins Design Collaborative, Inc.

The design elements represented on this sheet and related sheets are for design intent only. Selbert Perkins Design Collaborative does not represent that the design of the elements on the sheets are able to be fabricated entirely as shown. Contractor/fabricator to review documents for code compliance, constructability, structural and performance soundness. Contractor/fabricator to notify Selbert Perkins Design Collaborative in the event of omissions or disagreements with the constructability and design intent of the elements as depicted on the sheets.

client:

Tradesman

project:

Exterior Building Signage

date:

28 November 2018

revisions:

no.	description	by	date
1			
2			
3			
4			

title:

S1
Building
Icon Sign

sheet:

3



2 Section
scale: 3/8" = 1' - 0"

19.75 total square foot sign

2" deep fabricated copper letters, pin-mount to wire mesh frame and secure assembly to existing mullions. Color of wire mesh to match black.

12'-0"

3



1 Front Elevation
scale: 3/8" = 1' - 0"



3 In Situ
scale: NTS



selbert perkins design
collaborative inc.

3 Wood Street, Arlington MA 02476
781.574.6605 • 878.274.6620

Selbert Perkins Design Collaborative, Inc. © 2018

No portion of this drawing may be reproduced without written consent of Selbert Perkins Design Collaborative, Inc.

The design elements represented on this sheet and related sheets are for design intent only. Selbert Perkins Design Collaborative does not represent for the design of the elements on the sheets are able to be fabricated entirely or shown. Contractor/fabricator to review documents for code compliance, constructability, structural and performance requirements. Contractor/fabricator to notify Selbert Perkins Design Collaborative in the event of program or disagreement with the constructability and design intent of the elements as depicted on the sheets.

client:

Tradesman

project:

Exterior Building Signage

date:

26 November 2018

revisions:

no.	description	by	date
1			
2			
3			
4			

title:

S2
Exterior Entrance
Sign

sheet:

4









