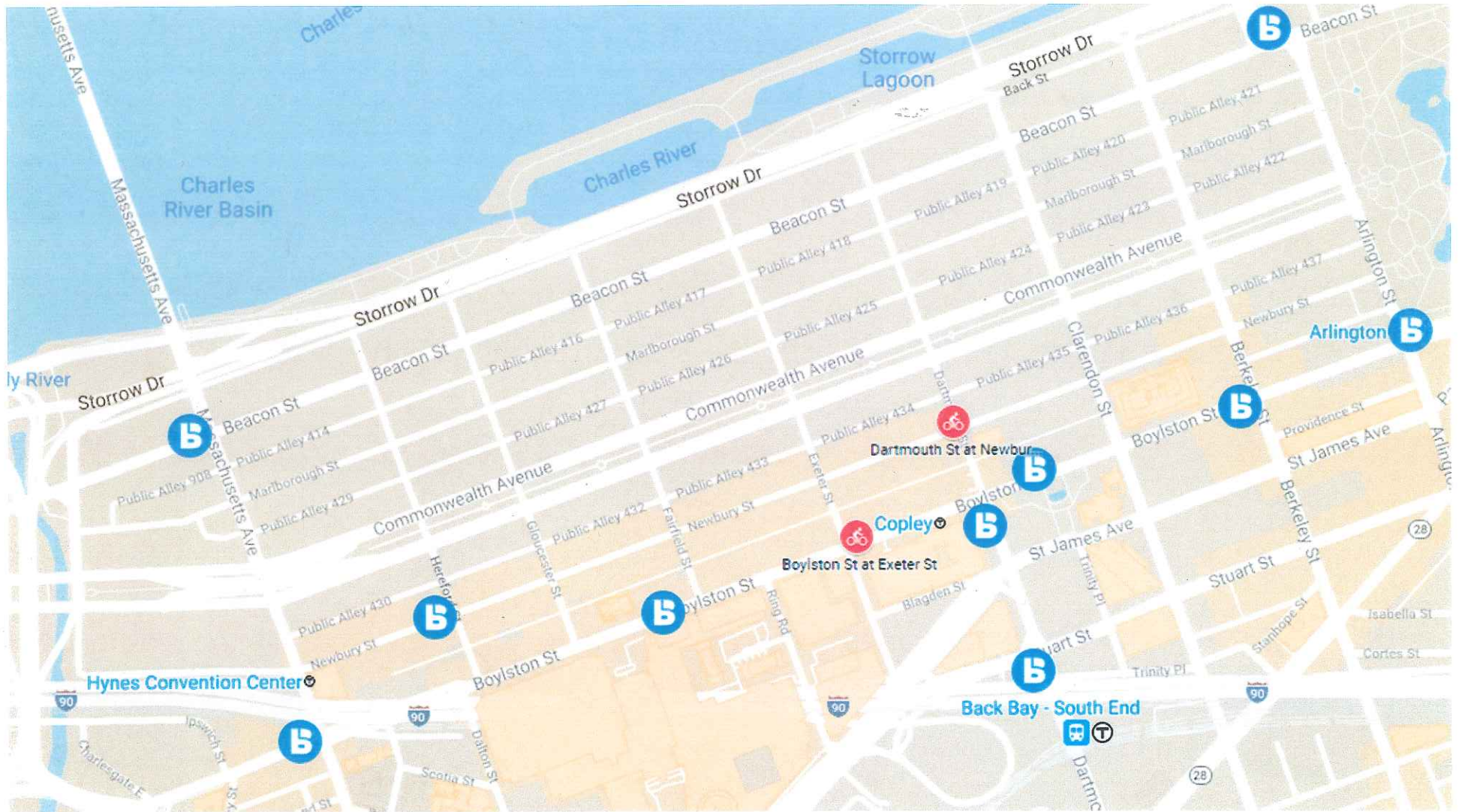


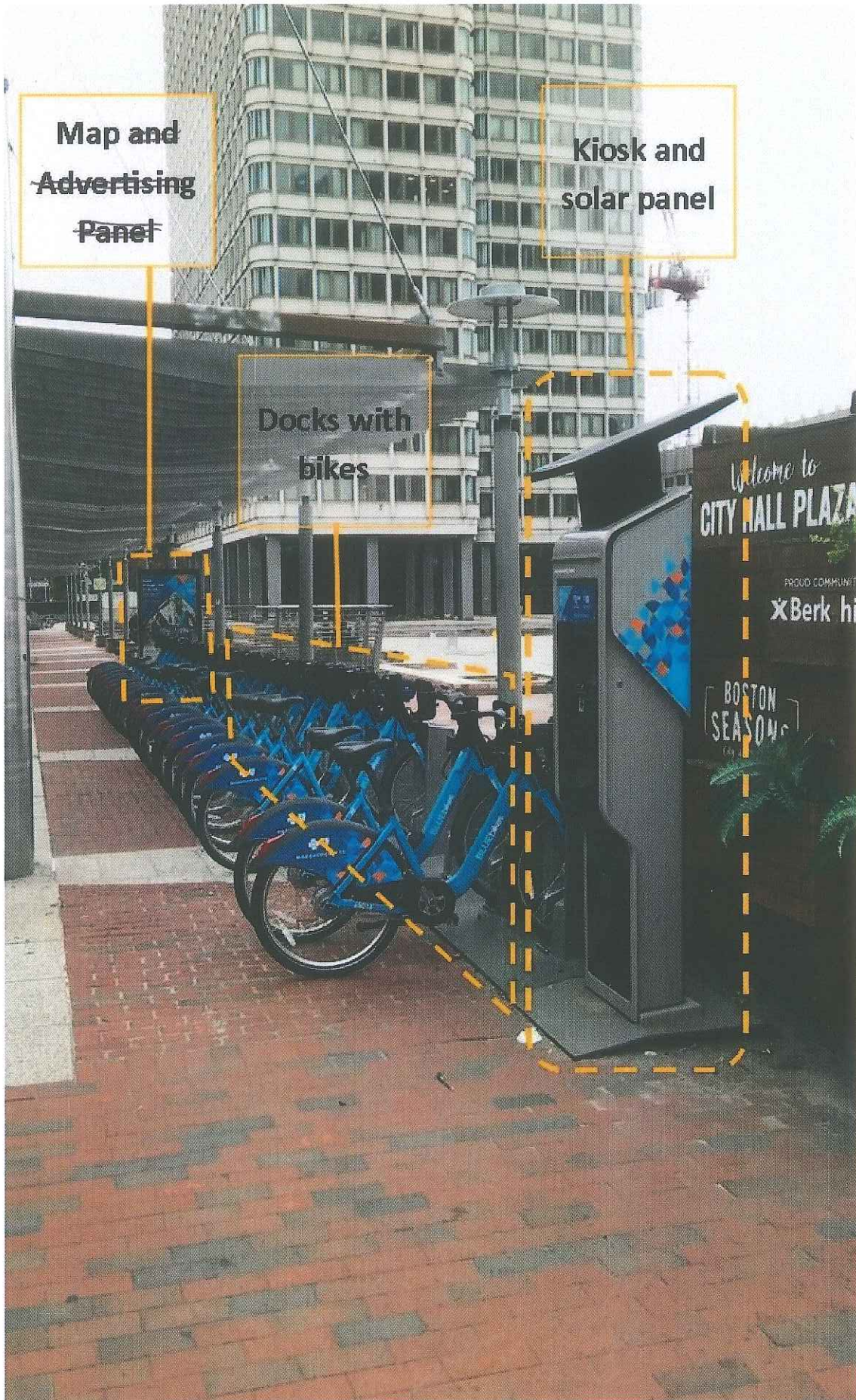


BLUEBIKES STATIONS



-  Existing station
-  Proposed station

BLUE BIKES STATION COMPONENTS



Map and
Advertising
Panel

Kiosk and
solar panel

Docks with
bikes

Welcome to
CITY HALL PLAZA

PROUD COMMUNITY
X Berk hi

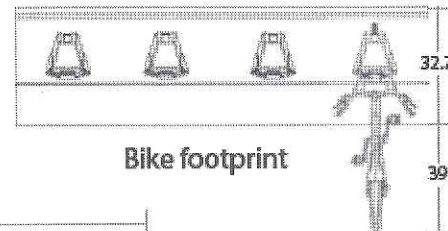
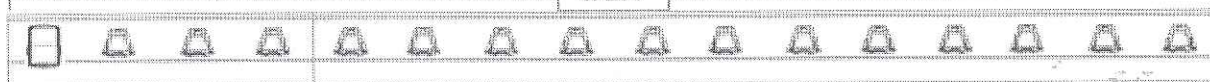
BOSTON
SEASON

8D Station Dimensions. 19 Dock = Standard City of Boston

Figure A. Dimensions of various bike share components and configurations.

1 terminal + 15 bike docks

472.4"



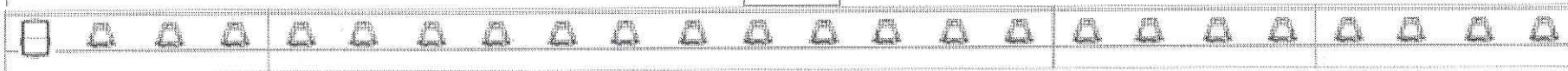
1 terminal + 19 bike docks

590.5"

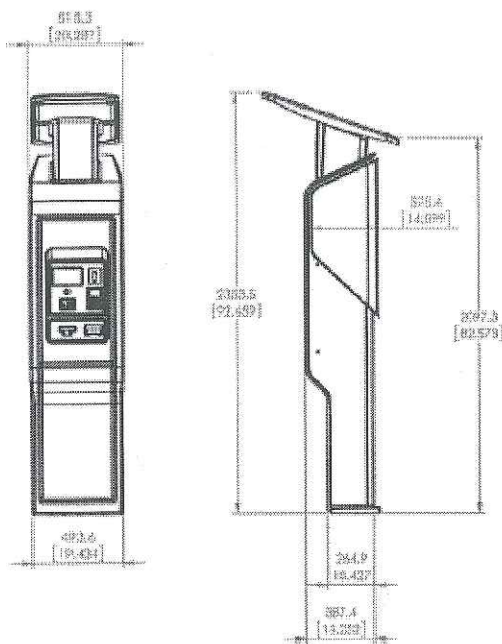


1 terminal + 23 bike docks

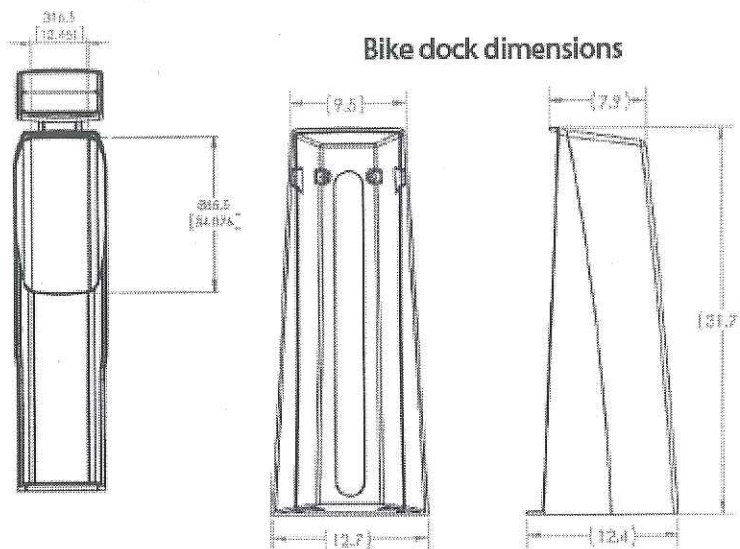
708.6"



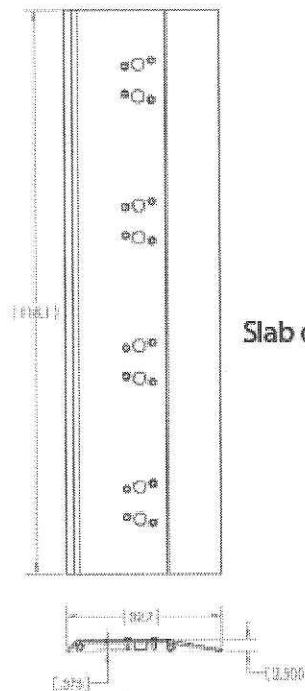
Terminal dimensions



Bike dock dimensions

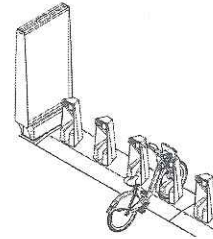
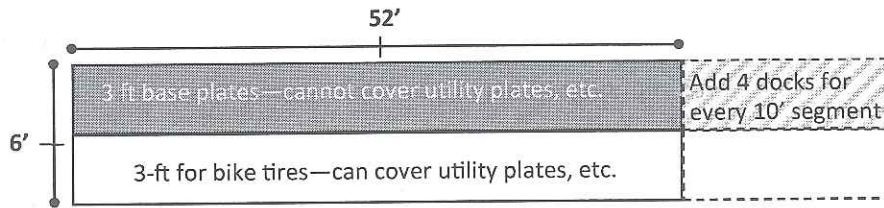


Slab dimensions



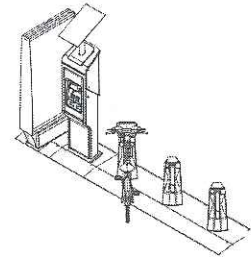
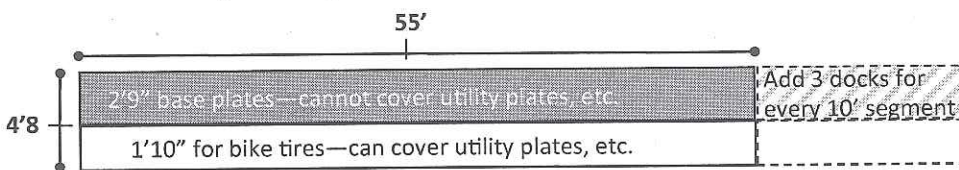
BLUE BIKES STATION FOOTPRINTS

STANDARD 19-DOCK STATION



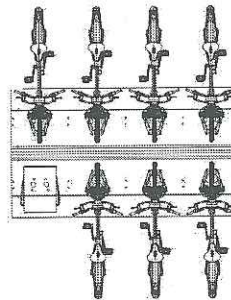
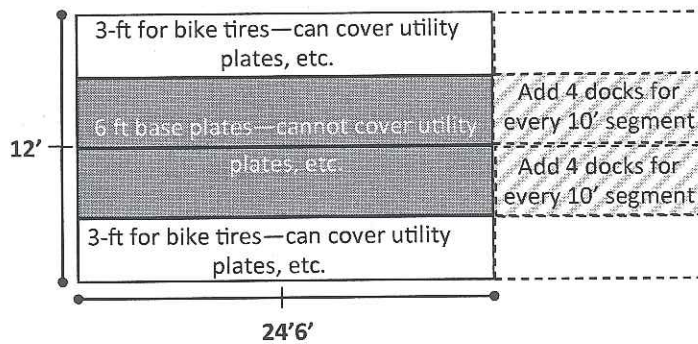
45-DEGREE 15-DOCK STATION

bikes at 45-degree angle to base plate



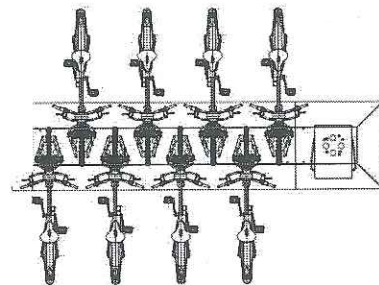
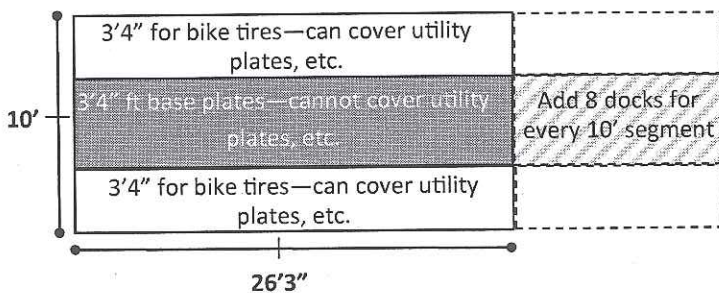
180 PLATE 17-DOCK STATION

two rows of docks with bikes facing each other

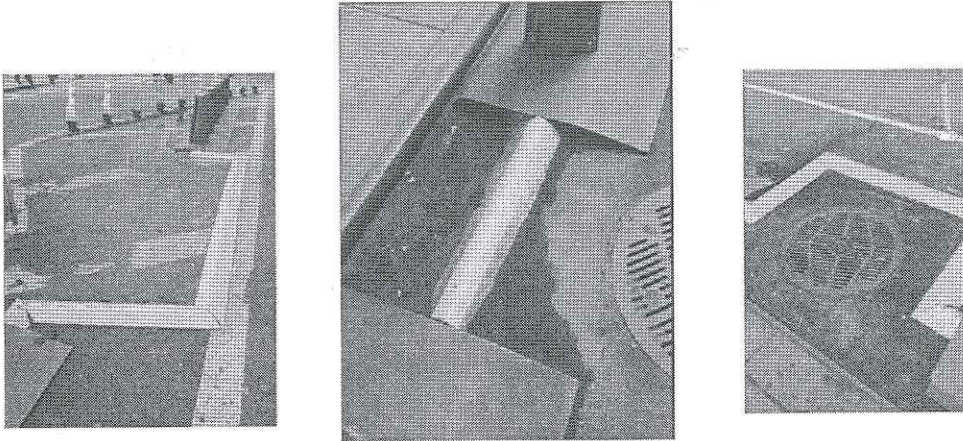


DUAL-RAMP 16-DOCK STATION

two rows of docks on a single base plate with bikes facing each other



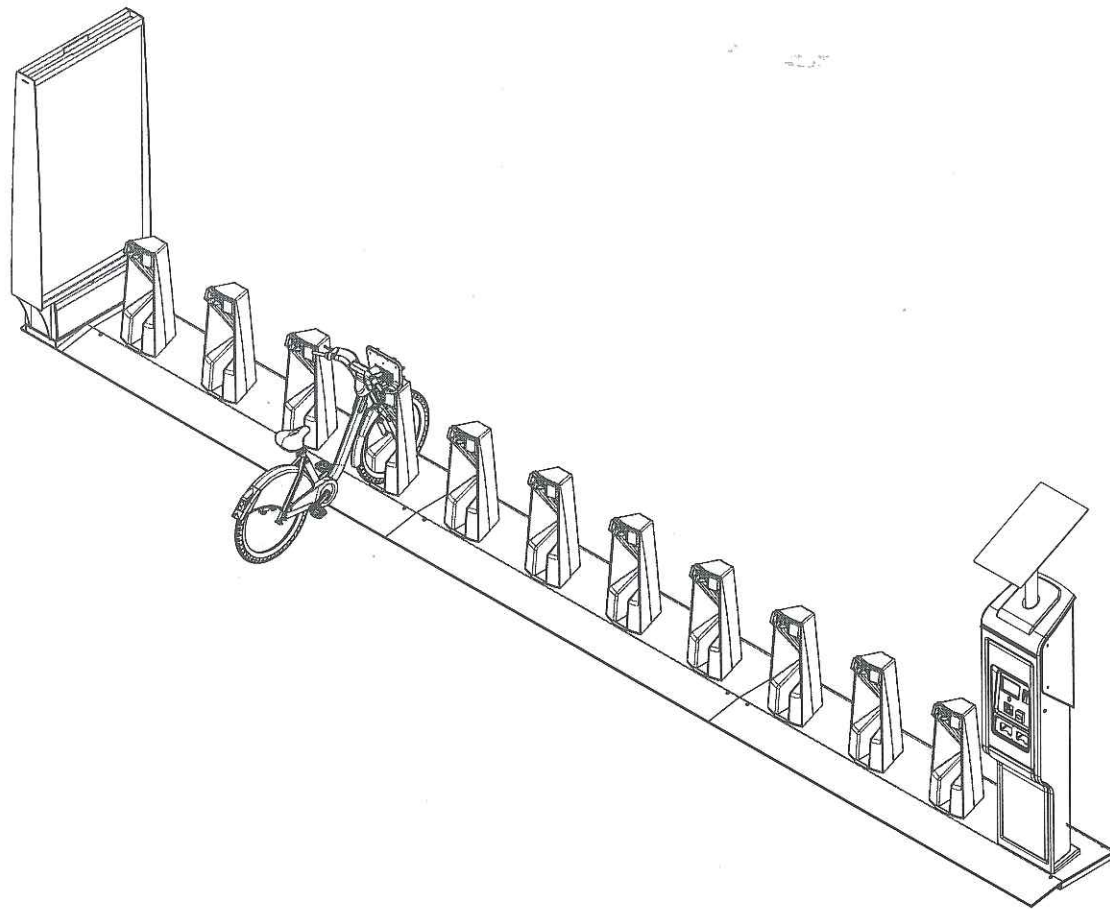
STATION BRIDGING



Cable and housing connects two station segments to get around an obstacle



Bridging at The Eddy at New Street, East Boston



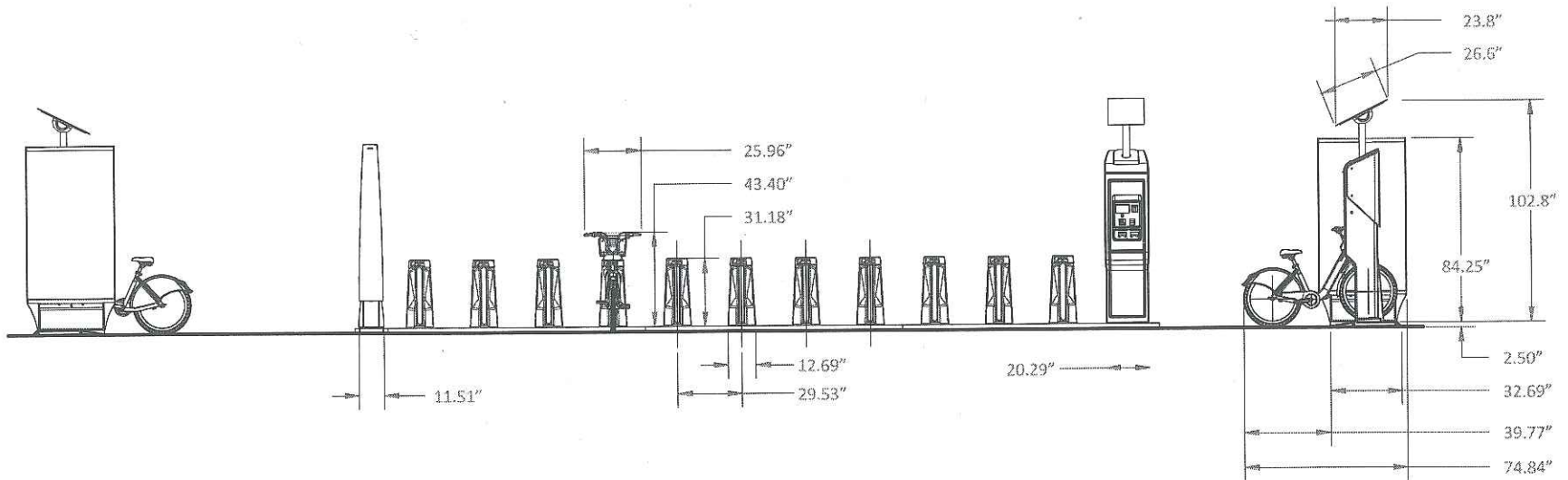
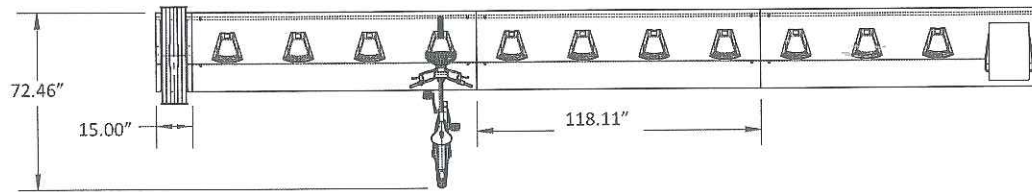
motivate

Project : Bonfire Station Configuration Document

Configuration type : BAR
Station elements: 11 docks + 1 Bonfire Terminal + 1 Ad Panel non Backlit
Views: Isometric Top View

Date : 2018-02-09
Scale: Not to scale
Name: 8DT-13-0102.ai

03



	Project : Bonfire Station Configuration Document	Configuration type : BAR Station elements: 11 docks + 1 Bonfire Terminal + 1 Ad Panel non-Backlit Views: Isometric Top View	Date : 2018-02-09 Scale: Not to scale Name: 8DT-13-0102.ai	02
--	---	--	---	----

154) DARTMOUTH ST AT NEWBURY ST REVIEW APPROVALS

Location Description:

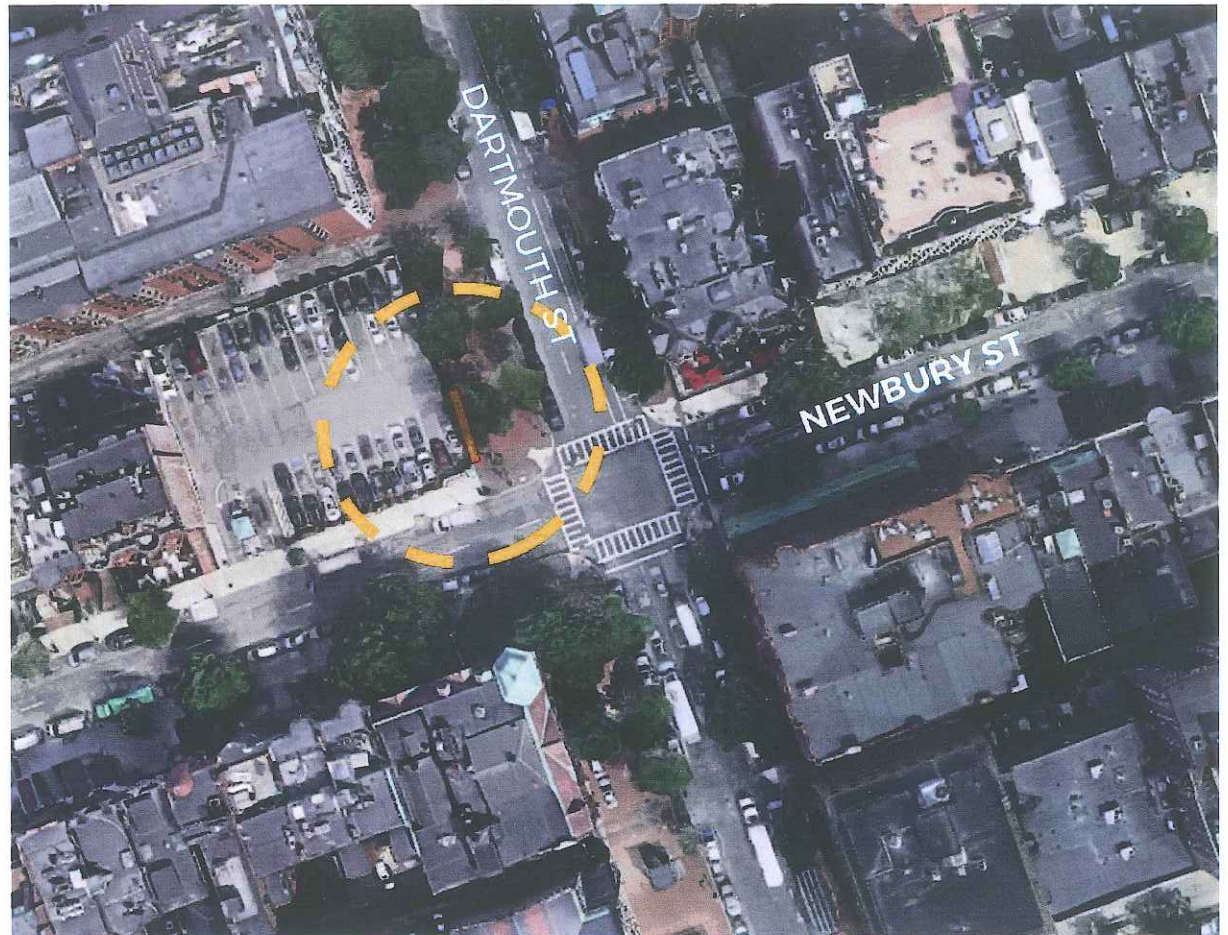
Dartmouth St, just north of intersection with Newbury St, on COB-owned sidewalk adjacent to parking lot. Back Bay

On/Off Street:

Off street

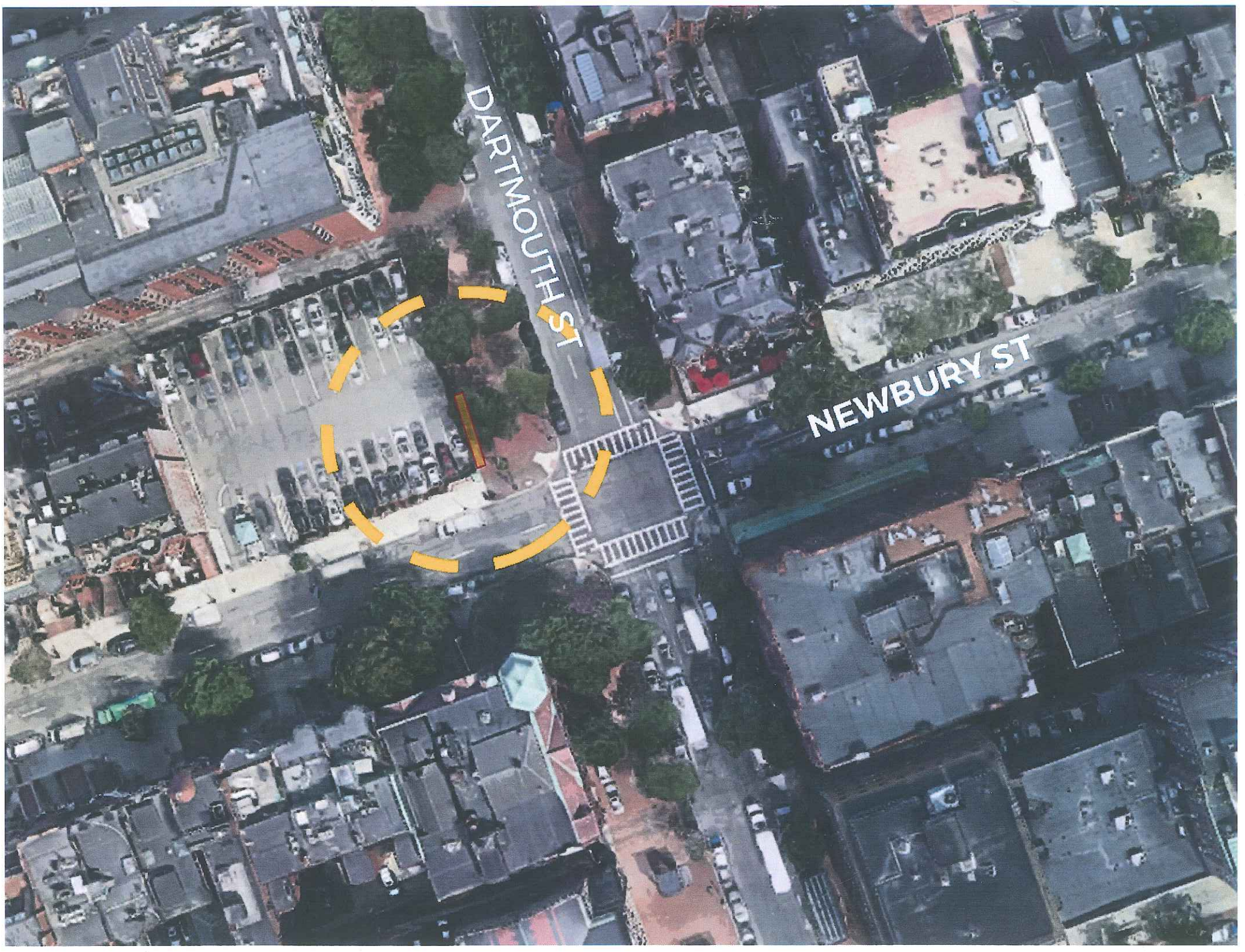
Dock Number, Dimensions, Components:

- 19 docks
- 52" x 6'
- Kiosk and ad panel/map frame



154) DARTMOUTH ST AT NEWBURY ST REVIEW APPROVALS





DARTMOUTH ST

NEWBURY ST





**YIELD
TO
PEDESTRIANS
ON TURNS**



P

BOYLSTON ST AT EXETER ST REVIEW APPROVALS

Location Description:

North side of Boylston St, just east of intersection with Exeter St, on COB-owned sidewalk. Back Bay. Site is in the Back Bay Architectural Commission district., and will be reviewed at 10/10 hearing.

On/Off Street:
Off-street

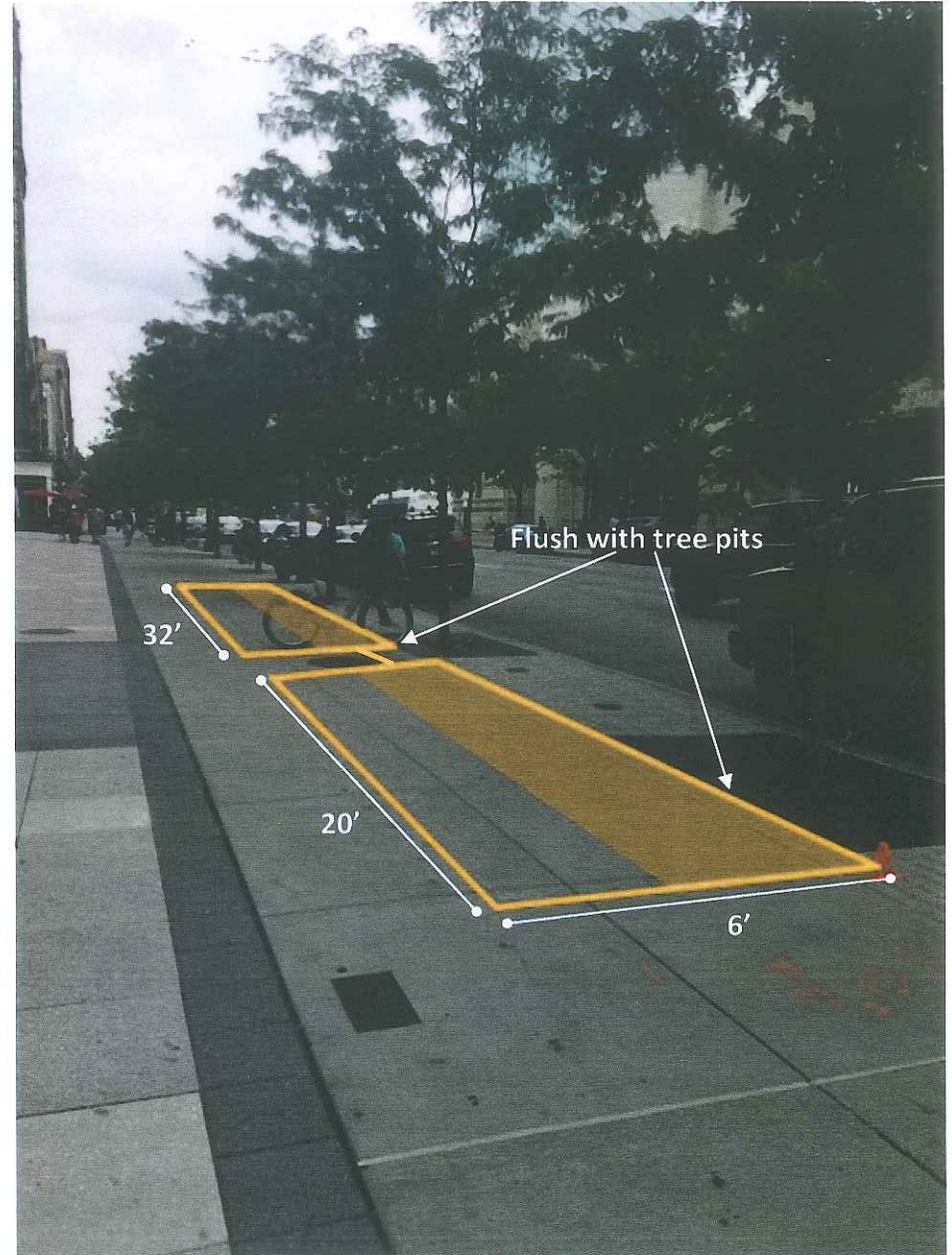
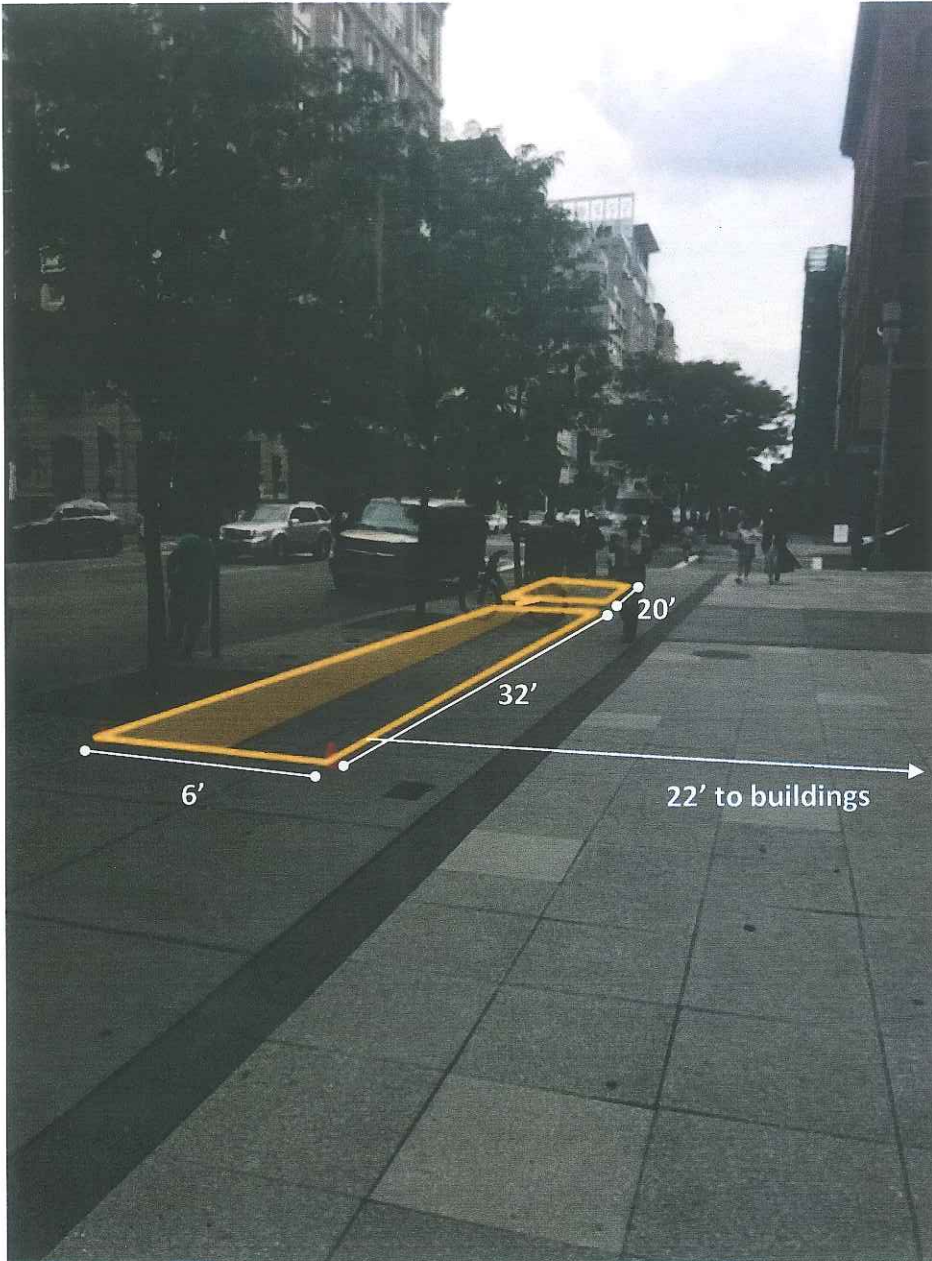
Dock Number, Dimensions, Components:

- 19 docks
- Station in two segments connected by bridging. 32' x 6' and 20' x 6'
- Kiosk, but no ad panel/map frame



BOYLSTON ST AT EXETER ST

REVIEW APPROVALS

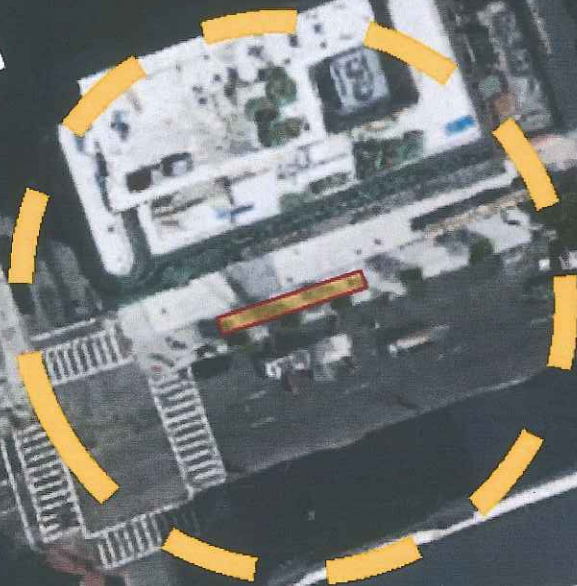


EXETER ST

NEWBURY ST

DARTMOUTH

BOYLSTON ST



BOSTON PUBLIC
LIBRARY



