

# 1954 Commonwealth Avenue

## August 2018 Advisory Review

### Project Drawings

#### *Set Backs*

Front 20'6" to 21'4" [existing ~57']

Side East-Addition 10' 1<sup>3</sup>/<sub>8</sub>"

Side West-Addition 10' 1<sup>5</sup>/<sub>8</sub>"

Side-Garage Existing 5' 4"

Back 6' 7/<sub>8</sub>" (mid.) [existing garage is 4' 8<sup>1</sup>/<sub>2</sub>"]

#### *Addition Height*

66'7" (excl. sloped roof and elevator overrides)

#### *Neighboring Buildings*

1950 Commonwealth 66'0" (to top of parapet above sidewalk)

1980 Commonwealth 64'0" (to top of parapet above sidewalk)



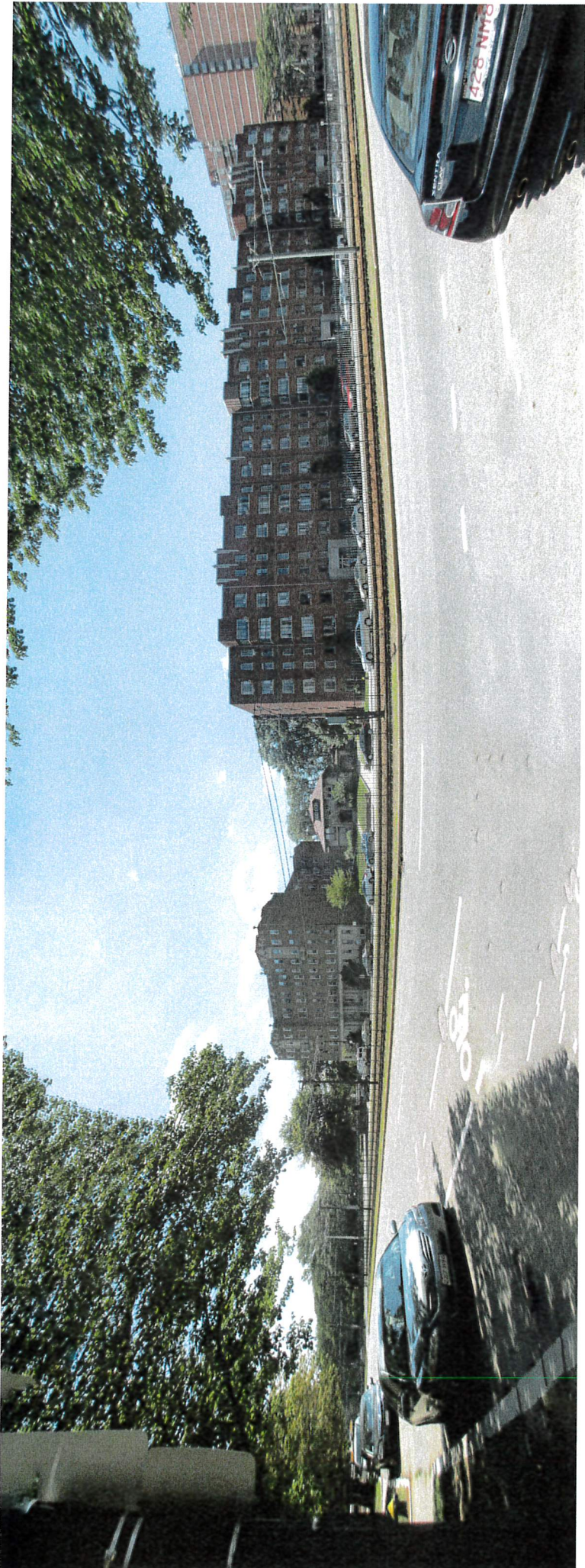
Report a problem







**1954 Commonwealth Avenue**  
**August 2018 Advisory Review**  
**Existing Conditions Photos**











































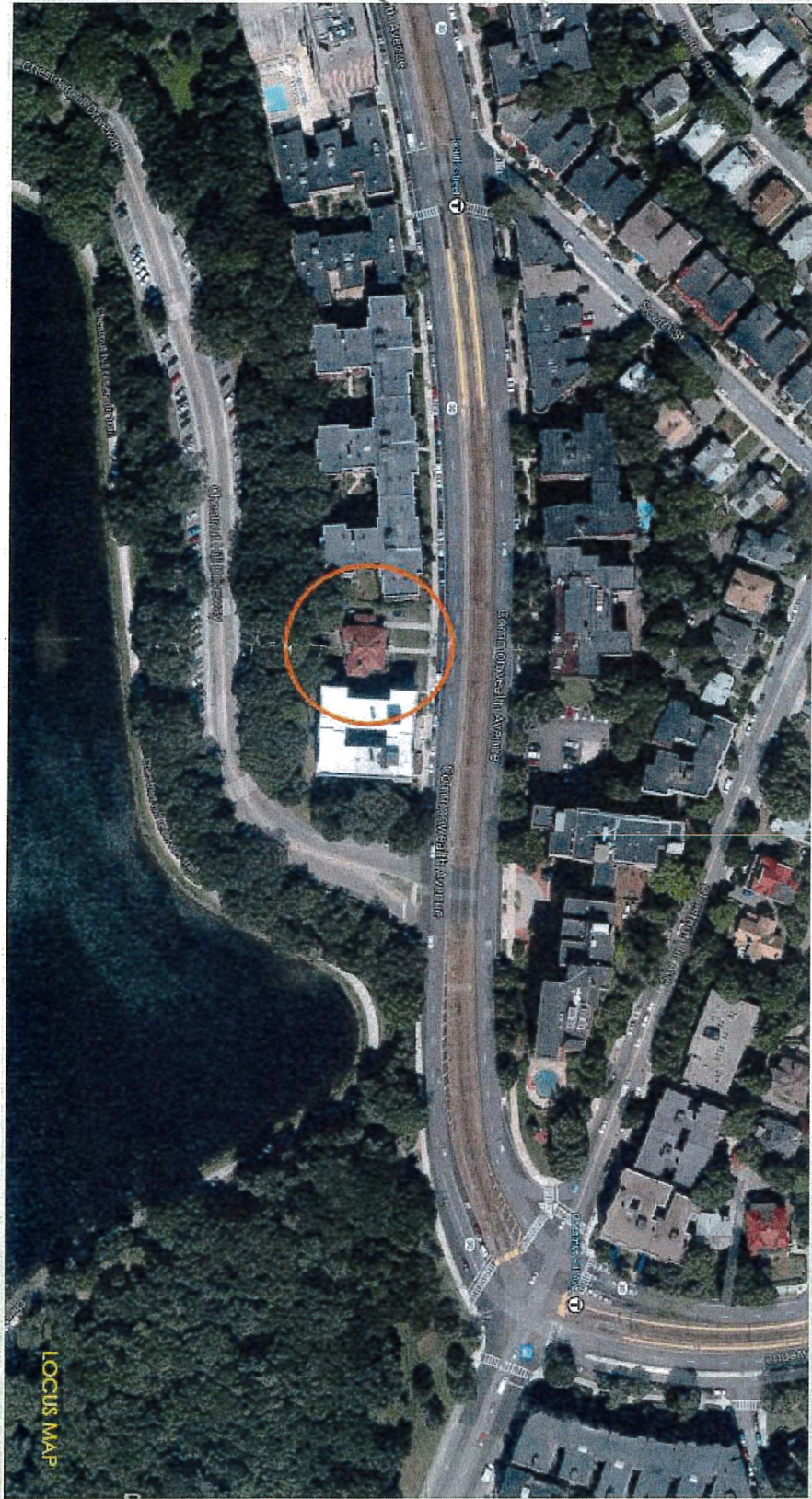


**1954 Commonwealth Avenue**

**August 2018 Advisory Review**

**Certificate of Design Approval  
Conceptual Approval with Proviso**

1954 COMMONWEALTH AVE



LOCUS MAP

009000084

Views from Commonwealth Avenue



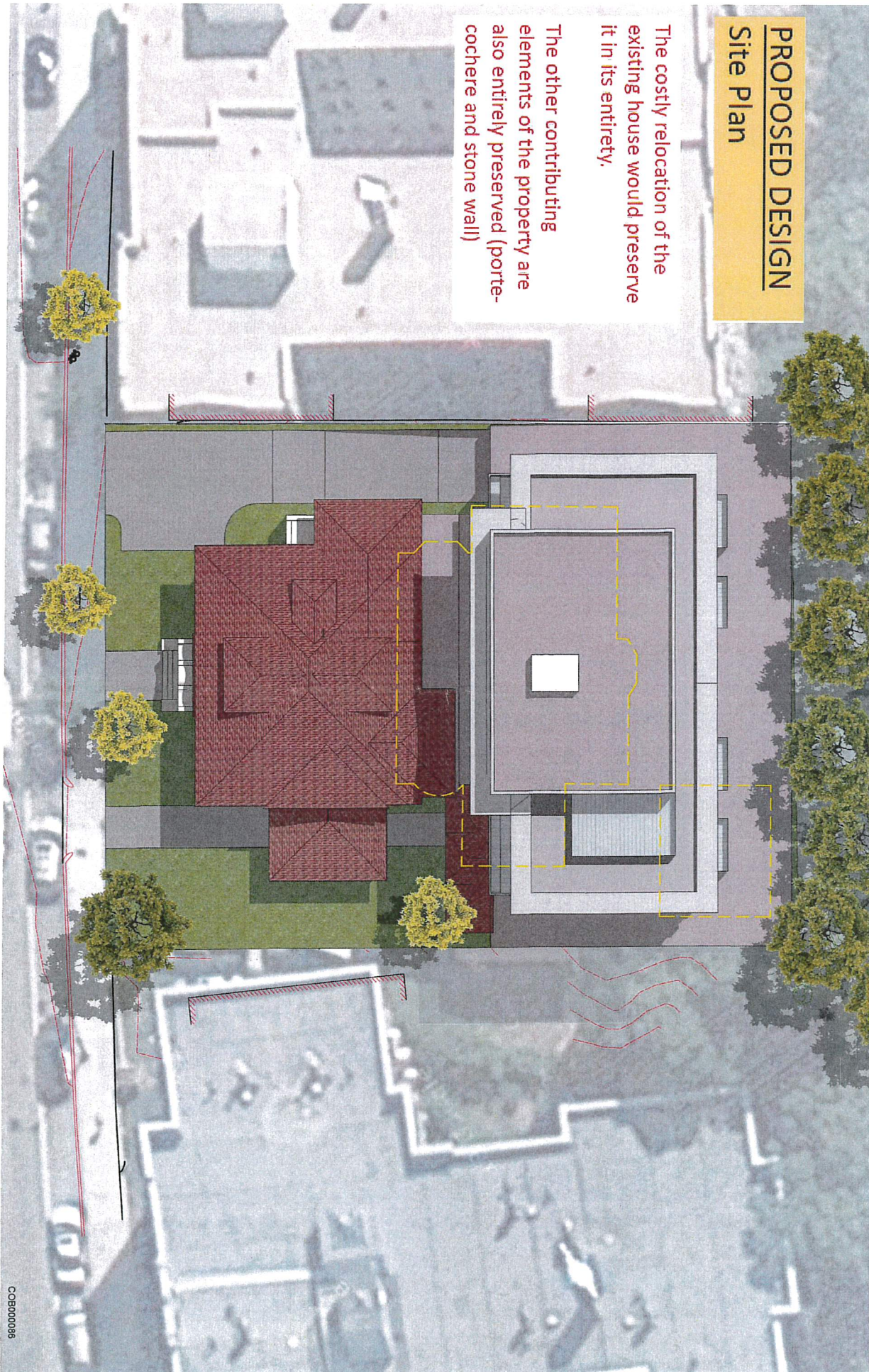
Existing Photos

Contributing historical elements include:

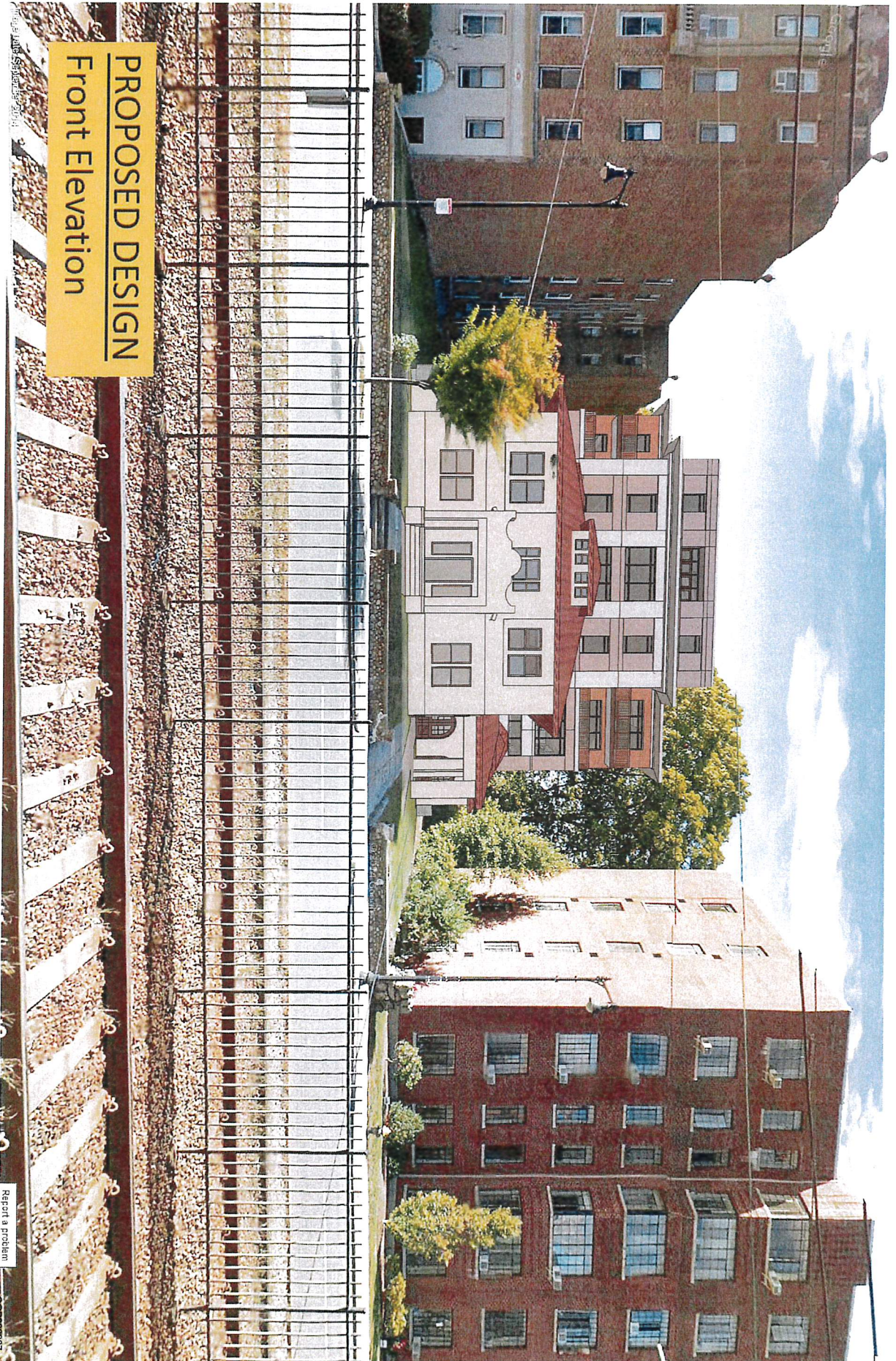
- House
- Porte-cochère
- Stone Wall

# PROPOSED DESIGN Site Plan

The costly relocation of the existing house would preserve it in its entirety.  
The other contributing elements of the property are also entirely preserved (porte-cochere and stone wall)

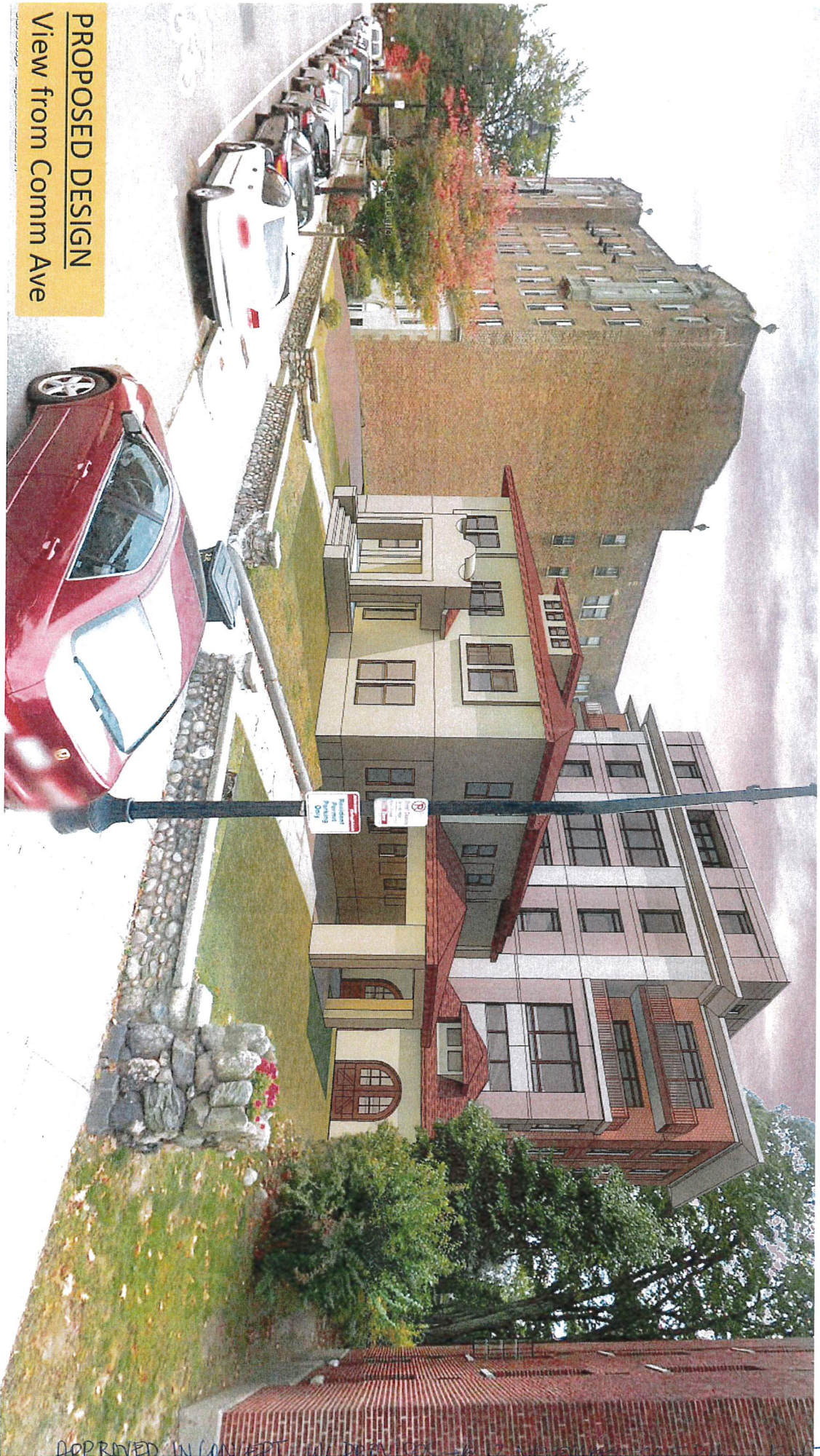


COB000086



APPROVED IN CONCEPT W/ PROVISOS -@ 12 NOVEMBER 2015 P.H

4 of 7



**PROPOSED DESIGN**  
View from Comm Ave

COB000088

APPROVED IN CONCEPT w/ PREVIOUS - 6 12 NOVEMBER 2019 P.M. - 5017



APPROVED IN CONCEPT W/ PROVISOS @ 12 NOVEMBER 2015 P.M. 6 of 7





**PROPOSED DESIGN**  
**Rear Elevation**

©2015 PH