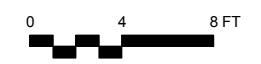


- restore original
- proposed new window under existing masonry lintel(s)
- proposed replacement for existing window
- proposed and modified for existing windows

--- DEMO WALL  
 — NEW WALL

PLAN -proposed  
 Scale: 1/8" = 1'-0"



<b>NOURY-ILLO ARCHITECTS</b> 46 Waltham Street, Suite 4A Boston, MA 02118 tel: 617.529.1326 fax 617.422.0881	
<b>THE CERK RESIDENCE</b> 191 COMMONWEALTH AVE UNIT #61 • BOSTON, MA	
SHEET TITLE: EXT ELEVATION DIAGRAM	ISSUED FOR: LANDMARKS
DATE: 05.22.2018	A1.0

CERK RESIDENCE • 191 COMMONWEALTH AVE - UNIT 61 • BOSTON, MA • Window and Door Schedule					
UNIT	LOCATION	LITES	MANUF.	TYPE	COMMENTS
A1	Exeter Street	6/6	Restore original	Double Hung	Replace new triple-track storm/screen unit
B1	Commonwealth Avenue	6/6	Restore original	Double Hung	Replace new triple-track storm/screen unit
B2	Commonwealth Avenue	6/6	Restore original	Double Hung	Replace new triple-track storm/screen unit
B3	Commonwealth Avenue	6/6	Restore original	Double Hung	Replace new triple-track storm/screen unit
C1	Commonwealth Avenue	6/6	Restore original	2-light Gothic fixed sash above 1/1 Double Hung	Replace new triple-track storm/screen unit
D1	Commonwealth Avenue	6/6	Restore original	Double Hung	Replace new triple-track storm/screen unit
D2	Commonwealth Avenue	6/6	Restore original	Double Hung	Replace new triple-track storm/screen unit
D3	Commonwealth Avenue	6/6	Restore original	Double Hung	Replace new triple-track storm/screen unit
E1	Commonwealth Avenue	6/6	Restore original	Double Hung	Replace new triple-track storm/screen unit
F1	Commonwealth Avenue	6/6	Restore original	Double Hung	Replace new triple-track storm/screen unit
F2	Commonwealth Avenue	6/6	Restore original	Double Hung	Replace new triple-track storm/screen unit
F3	Commonwealth Avenue	6/6	Restore original	Double Hung	Replace new triple-track storm/screen unit
G1	facing East (above adjacent roof)	6/6	Dynamic	Double Hung	True Divided, Single-pane, Wood; Replace new triple-track storm/screen unit; to match existing windows Type F
G2	facing East (above adjacent roof)	6/6	Dynamic	Double Hung	True Divided, Single-pane, Wood; Replace new triple-track storm/screen unit; to match existing windows Type F
H1	facing East (above adjacent roof)	24-light	Dynamic	Steel Frame	Operable portion if possible, for ventilation
I1	facing North (Marlborough Street Alley)	2/2	Dynamic	Double Hung	True Divided, Single-pane, Wood; Replace new triple-track storm/screen unit; to match existing
J1	facing North (Marlborough Street Alley)	2/2	Dynamic	Double Hung	True Divided, Single-pane, Wood; Replace new triple-track storm/screen unit; to match existing
J2	facing North (Marlborough Street Alley)	2/2	Dynamic	Double Hung	True Divided, Single-pane, Wood; Replace new triple-track storm/screen unit; to match existing
K1	facing North (Marlborough Street Alley)	4/4	Dynamic	Double Hung	True Divided, Single-pane, Wood; Replace new triple-track storm/screen unit; replace (2) existing wood DH replacement windows with (1) double-wide DH window
<b>Notes:</b>					
Contact: Jim Olender, Dynamic Architectural Windows & Doors <a href="mailto:jolender@dynamicwindows.com">jolender@dynamicwindows.com</a>					

A1

Master Bedroom (4) 6-over-6  
Wood, True divided lights, Triple Track, Chains

Window\_Type A1



Meeting rail 1-3/8"  
Muntin 3/4"  
Sash 1-3/8"  
Bottom rail 2-3/8"  
US 38-1/4"x 67-1/4"

B1

Master Bedroom (4) 6-over-6  
Wood, True divided lights, Triple Track, Chains

Window\_Type B1



Meeting rail 1-3/8"  
Muntin 3/4"  
Sash 1-3/8"  
Bottom rail 2-3/8"  
US 39-1/2"x 71"

B2

Master Bedroom (4) 6-over-6  
Wood, True divided lights, Triple Track, Chains

Window\_Type B2



Meeting rail 1-3/8"  
Muntin 3/4"  
Sash 1-3/8"  
Bottom rail 2-3/8"  
US 39-1/2"x 71"

B3

Master Bedroom (4) 6-over-6  
Wood, True divided lights, Triple Track, Chains

Window\_Type B3



Meeting rail 1-3/8"  
Muntin 3/4"  
Sash 1-3/8"  
Bottom rail 2-3/8"

C1

**Sitting Room (1) 1-over-1 with fixed upper sash**

*Chains, fixed upper sash, no triple track*

Window Type C1



Meeting rail 1-3/8"  
Sash 1-3/8"  
Bottom rail 2-3/8"  
US 44-3/4"W x 54-1/2"

Upper fixed sash  
37-1/2"H to peak  
Muntin 3/4"

D1

Master Bedroom (4) 6-over-6  
Wood, True divided lights, Triple Track, Chains

Window Type B1



Meeting rail 1-3/8"  
Muntin 3/4"  
Sash 1-3/8"  
Bottom rail 2-3/8"  
US 39-1/2"x 71"

D2

Master Bedroom (4) 6-over-6  
Wood, True divided lights, Triple Track, Chains

Window Type B2



Meeting rail 1-3/8"  
Muntin 3/4"  
Sash 1-3/8"  
Bottom rail 2-3/8"  
US 39-1/2"x 71"

D3

Master Bedroom (4) 6-over-6  
Wood, True divided lights, Triple Track, Chains

Window Type B3



Meeting rail 1-3/8"  
Muntin 3/4"  
Sash 1-3/8"  
Bottom rail 2-3/8"

E1

Living Room (4) 6-over-6  
(1) NOT curved window: wood, true divided lights, triple tracks

Window.E1



Meeting rail 1-3/8"  
Muntin 3/4"  
Sash 1-3/8"  
Bottom rail 2-3/8"  
US 37-1/2"W x 72"H

F1

Living Room (4) 6-over-6  
(3) Curved: Chains, Triple Tracks, Wood true divided lights

Window.E1



Meeting rail 1-3/8"  
Muntin 3/4"  
Sash 1-3/8"  
Bottom rail 2-3/8"  
US 35-1/2"W x 72-1/2"H

F2

Living Room (4) 6-over-6  
(3) Curved: Chains, Triple Tracks, Wood true divided lights

Window.E2



Meeting rail 1-3/8"  
Muntin 3/4"  
Sash 1-3/8"  
Bottom rail 2-3/8"  
US 35-1/2"W x 72-1/2"H

F3

Living Room (4) 6-over-6  
(3) Curved: Chains, Triple Tracks, Wood true divided lights

Window.E3



Meeting rail 1-3/8"  
Muntin 3/4"  
Sash 1-3/8"  
Bottom rail 2-3/8"  
US 35-1/2"W x 72-1/2"H

EXTERIOR VIEW



view from Commonwealth Avenue - proposed Windows G1; see drawing A2.0

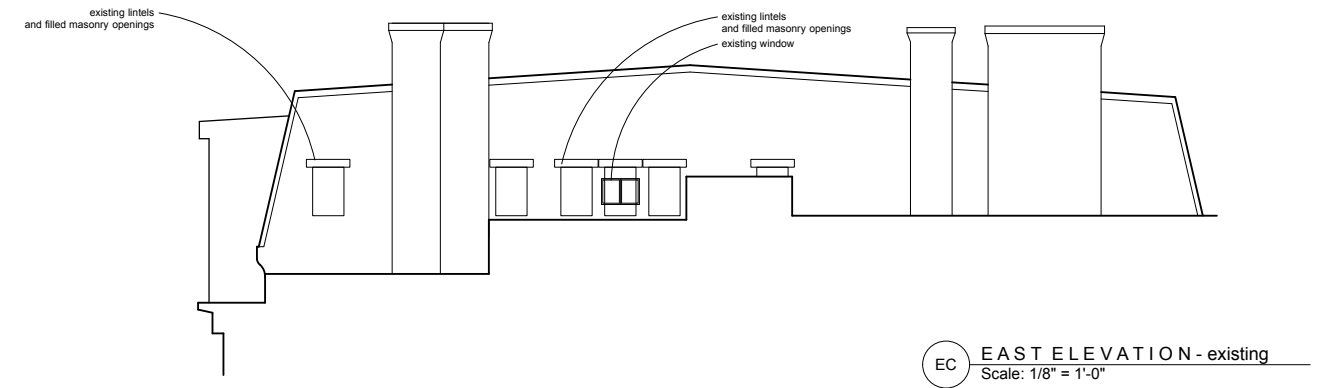
INTERIOR VIEWS



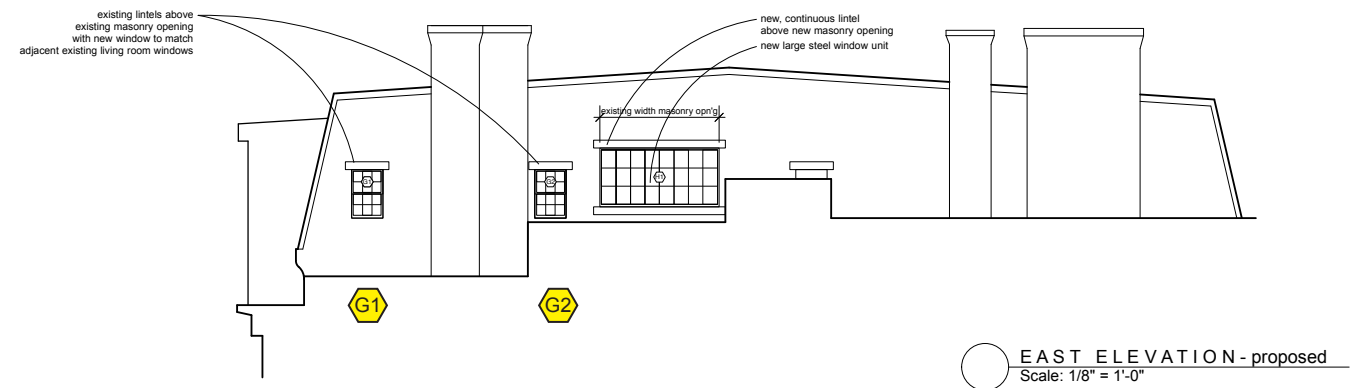
interior post-demolition view Window G1, Living Room



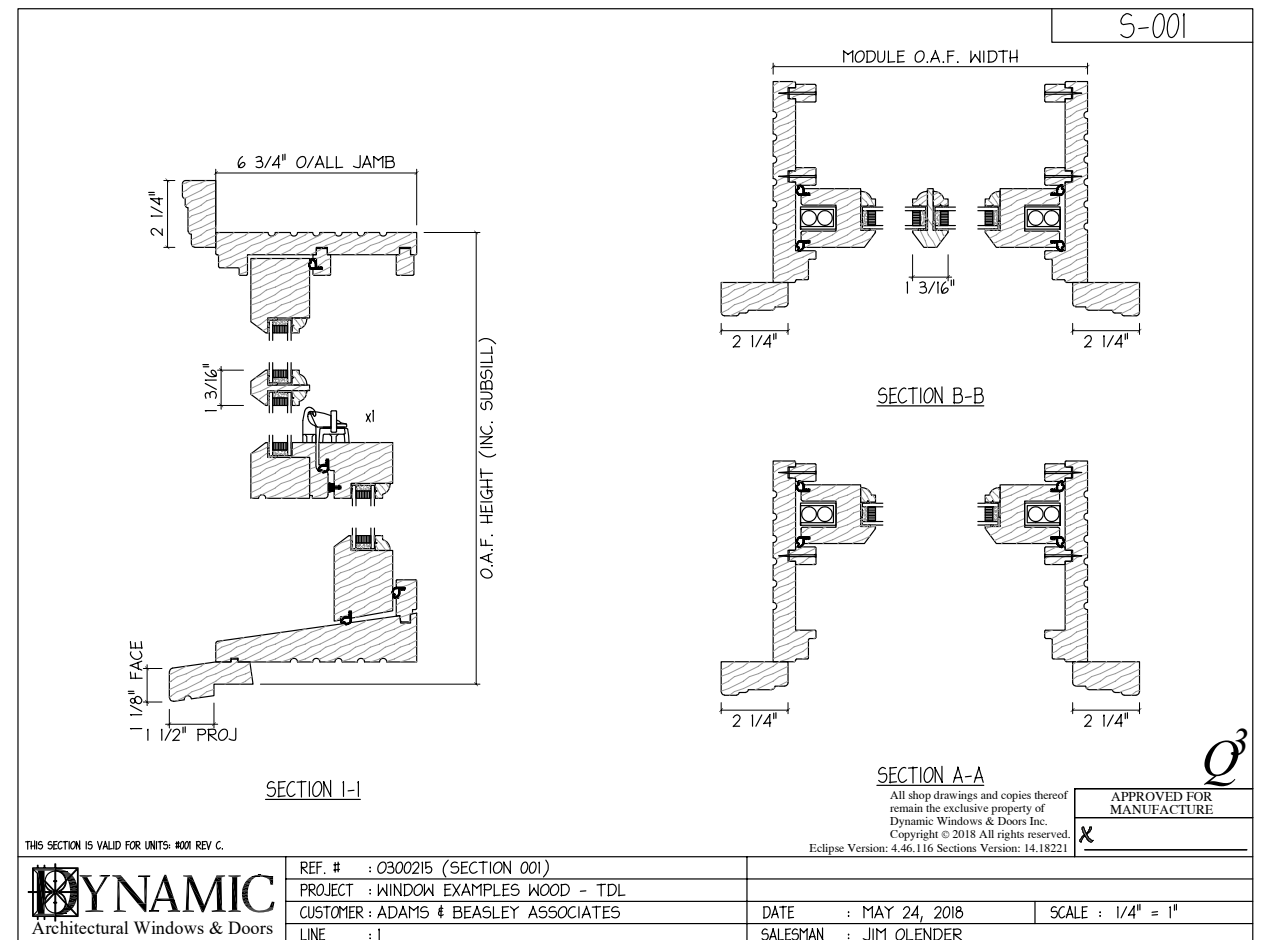
interior post-demolition view Window G2, Living Room



EC EAST ELEVATION - existing  
Scale: 1/8" = 1'-0"

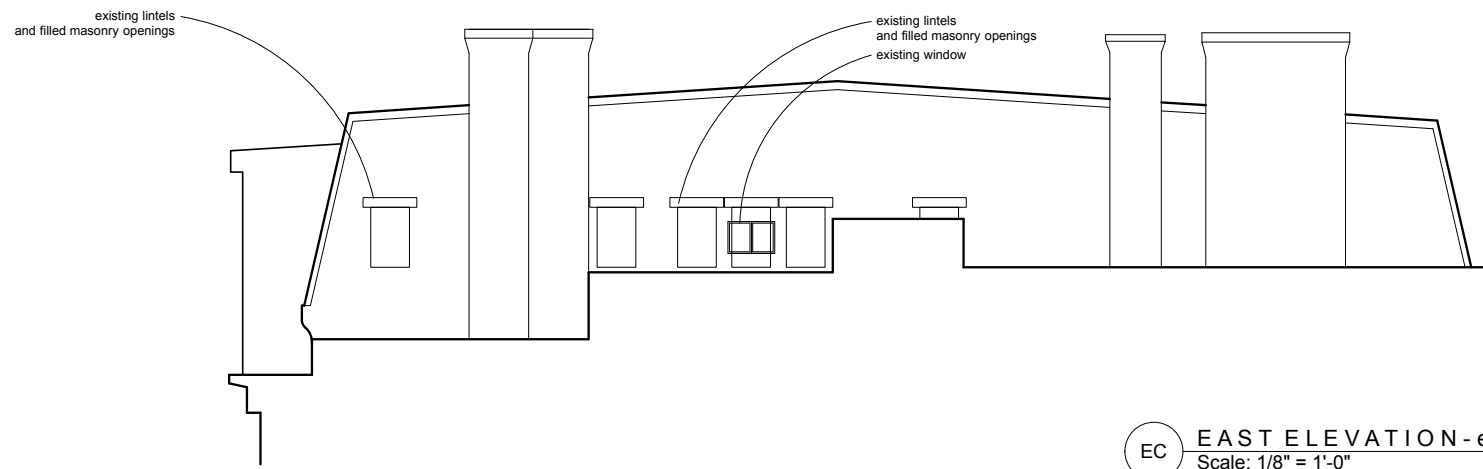


EAST ELEVATION - proposed  
Scale: 1/8" = 1'-0"

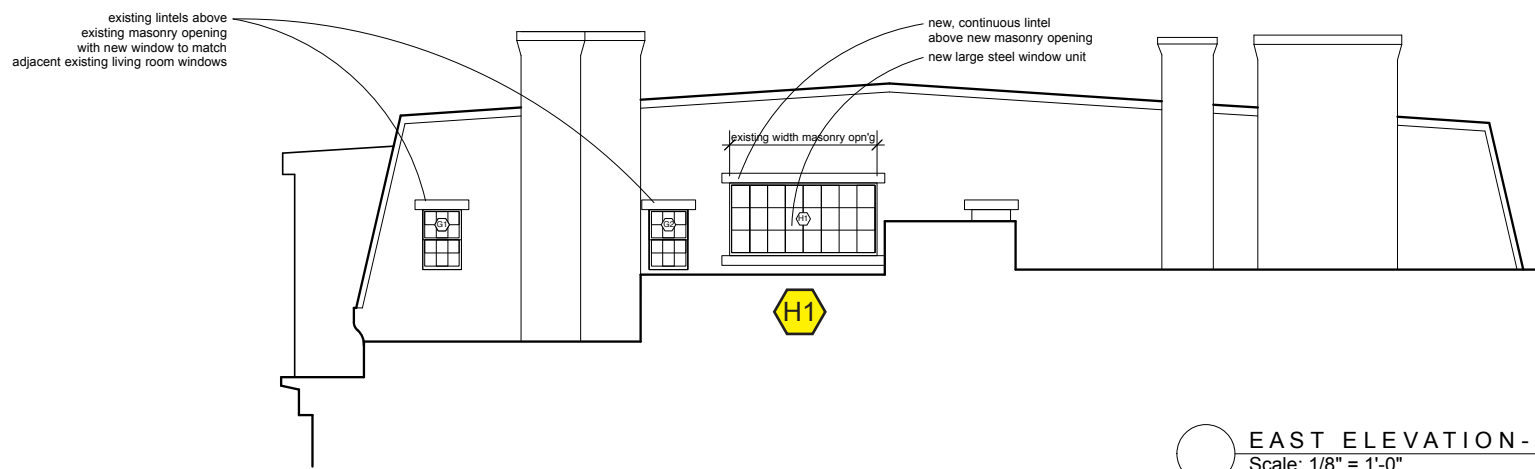


THIS SECTION IS VALID FOR UNITS: #001 REV C.

	REF. # : 0300215 (SECTION 001)		
	PROJECT : WINDOW EXAMPLES WOOD - TDL	DATE : MAY 24, 2018	SCALE : 1/4" = 1"
	CUSTOMER : ADAMS & BEASLEY ASSOCIATES	SALESMAN : JIM OLENDER	
	LINE : 1		



EC EAST ELEVATION - existing  
Scale: 1/8" = 1'-0"



○ EAST ELEVATION - proposed  
Scale: 1/8" = 1'-0"

S-001

NOTES:  
FRAME IS PREPPED FOR INTERIOR INSTALLATION STRAPS.  
OPERABLE CASEMENTS SELECTED WITH 4-BAR HINGES ALLOW FOR A MAXIMUM OPENING OF 60 DEGREES. LIMITED OPENING DEVICE OR CASEMENT STAY SELECTION MAY REDUCE THIS FURTHER.

SECTION I-I      SECTION 2-2      SECTION A-A

All shop drawings and copies thereof remain the exclusive property of Dynamic Windows & Doors Inc. Copyright © 2018 All rights reserved. Eclipse Version: 4.46.112 Sections Version: 14.27597

<p><b>DYNAMIC</b> Architectural Windows &amp; Doors</p>	REF. # : 0300165 (SECTION 001)		
	PROJECT : WINDOW EXAMPLES STEEL	DATE : MAY 18, 2018	SCALE : 1/4" = 1"
	CUSTOMER : ADAMS & BEASLEY ASSOCIATES	SALESMAN : JIM OLENDER	
	LINE : 1		

APPROVED FOR MANUFACTURE



11

Bedroom 3 (2) 2-over-2  
Wood windows, triple track

Window\_J1 Spring loaded track/channel (photo 2 of 2)



Meeting rail 1-1/8"  
Muntin 3/4"  
Sash 1-1/8"  
Bottom rail 2"  
US 39-1/2" x 64-1/2"H

J1

Bedroom 4 (1) 2-over-2  
Double Insulated Wood Window, replacement window

Window\_J1 (photo 2 of 2)



Meeting rail 1-1/4"  
Muntin 7/8"  
Sash 1-1/4"  
Bottom rail 2-3/4"  
US 37-3/4"W x 61-1/4"H

Potential opening 44"W x 65-1/2"H

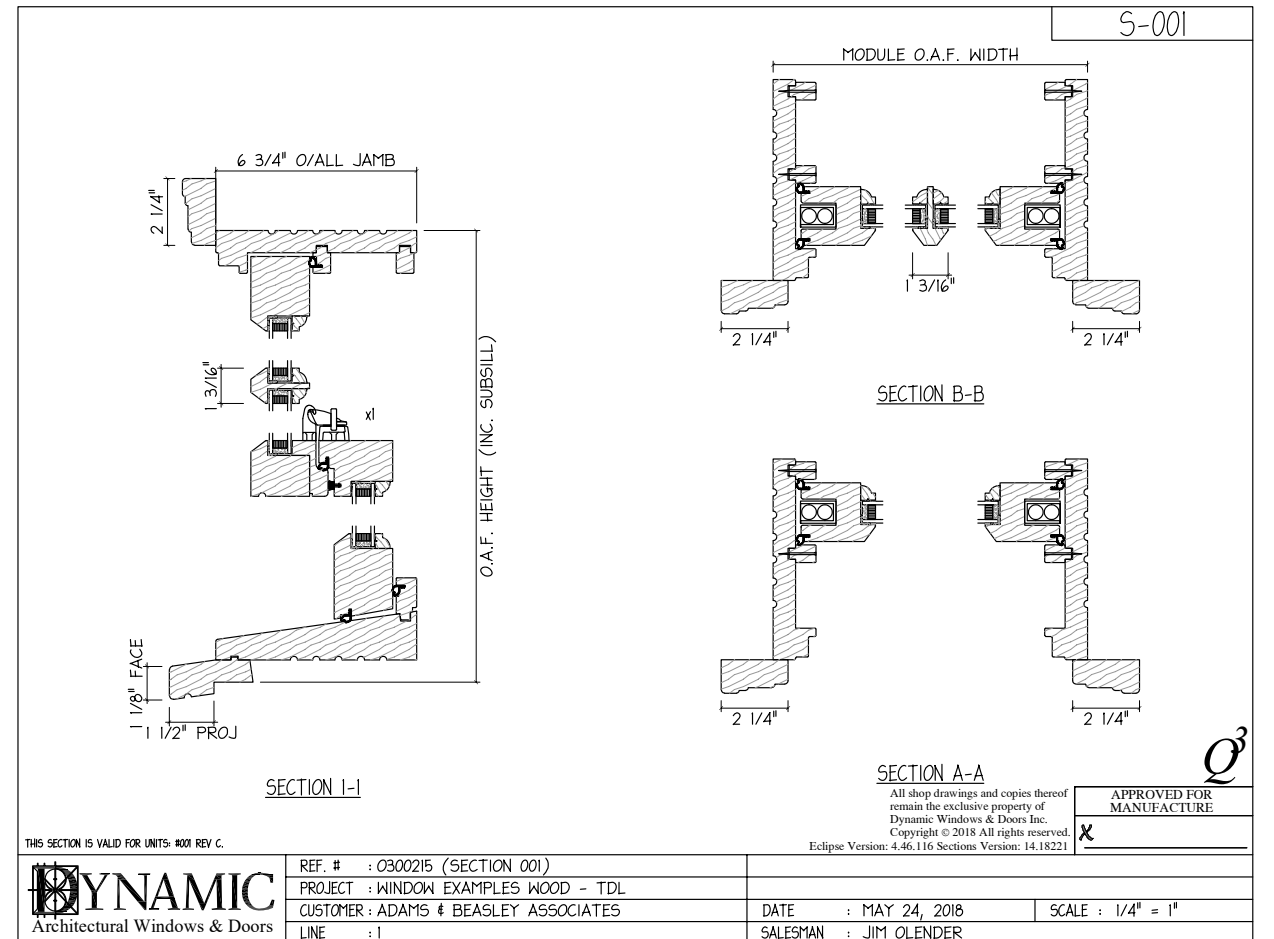
J2

Bedroom 3 (2) 2-over-2  
Wood windows, triple track

Window\_J2 Rope chain (photo 2 of 2)



Meeting rail 1-1/8"  
Muntin 3/4"  
Sash 1-1/8"  
Bottom rail 2"  
US 39-1/4" x 64-1/2"H



Kitchen (2) 2-over-1  
Wood windows, spring loaded, true divided lights



Window\_K1\_K2 (photo 1 of 2)



Meeting rail 1-1/4"  
Muntin 3/4"  
Sash 1-1/4"  
Bottom rail 2-1/4"  
US 32-1/2" x 61"H



existing, exterior

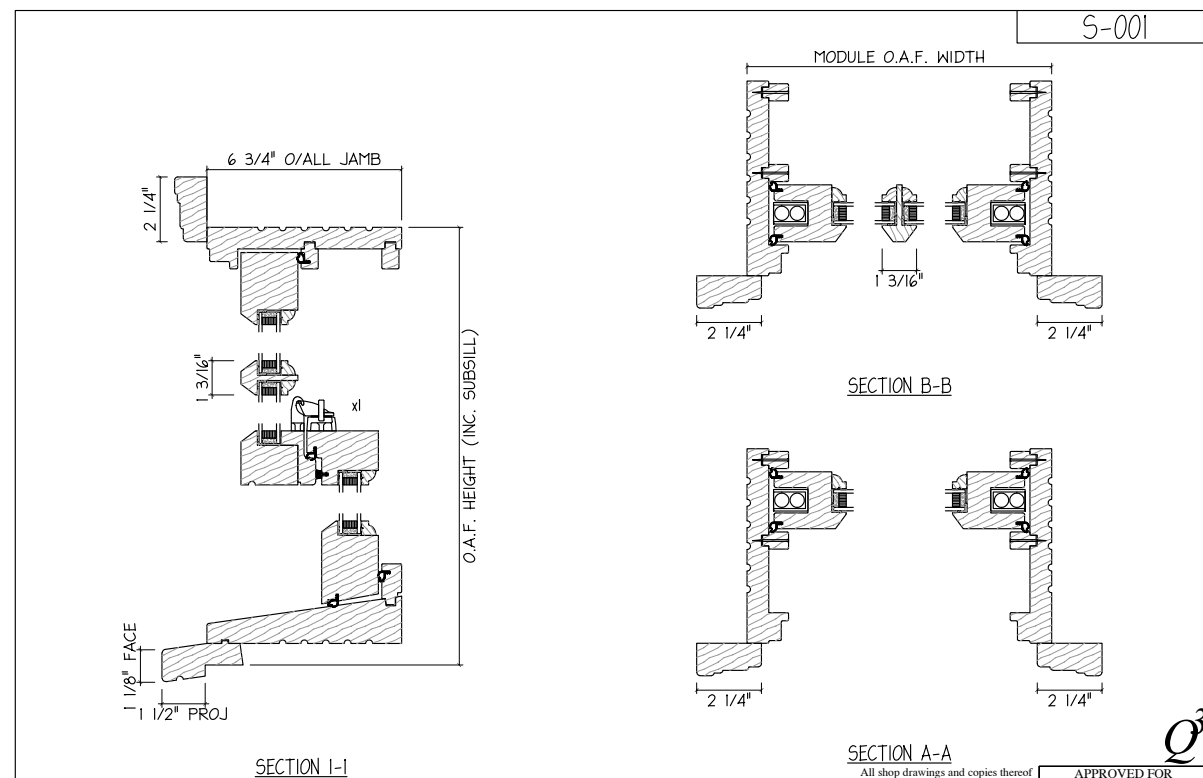
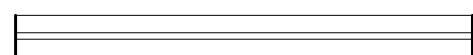
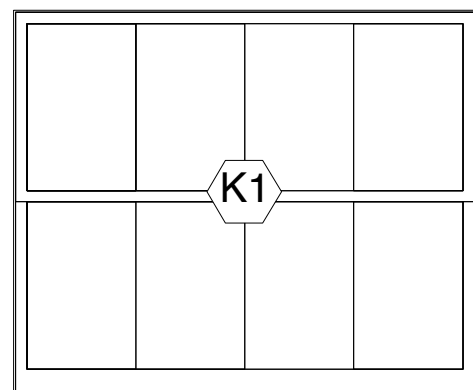


exterior - rear facade



18 Exeter St.  
Boston, MA 02116

aerial view above Public Alley 425 - proposed Windows K1 (circled in red); see drawing



THIS SECTION IS VALID FOR UNITS #001 REV C.

	REF. # : 0300215 (SECTION 001)	DATE : MAY 24, 2018	SCALE : 1/4" = 1"
	PROJECT : WINDOW EXAMPLES WOOD - TDL	SALESMAN : JIM OLENDER	
	CUSTOMER : ADAMS & BEASLEY ASSOCIATES		
	LINE : 1		

APPROVED FOR MANUFACTURE

PLAN - ELEV -proposed North Window  
Scale: 1/2" = 1'-0"



street view from Public Alley 425 - proposed Windows K1 (circled in red); see drawing