

# Existing Photo's

160 COMMONWEALTH AVE. & 160A COMMONWEALTH AVE.



A - 160 COMMONWEALTH AVE. - EXISTING ENTRY



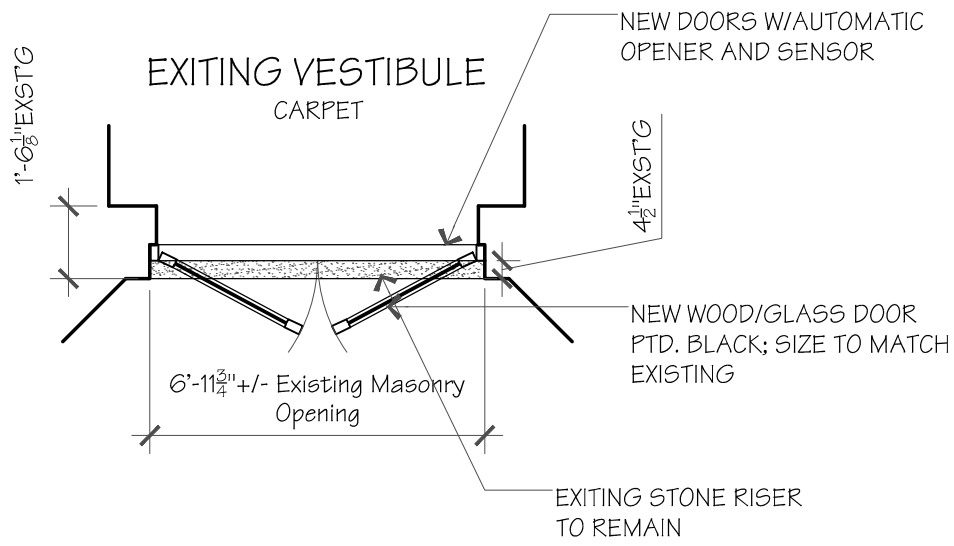
B - 160A COMMONWEALTH AVE. - EXISTING ENTRY

**PATRICK AHEARN**  
— ARCHITECT —

160 Commonwealth Avenue  
Suite L3  
Boston, MA 02116  
P: 617.266.1710  
F: 617.266.2276

Nevin Square  
17 Winter Street  
Edgartown, MA 02539  
P: 508.939.9312  
F: 508.939.9038

[www.patrickahearn.com](http://www.patrickahearn.com)

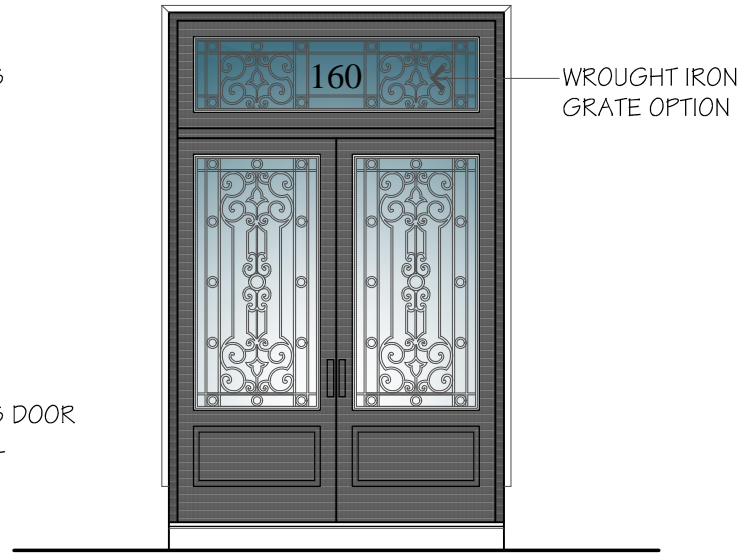
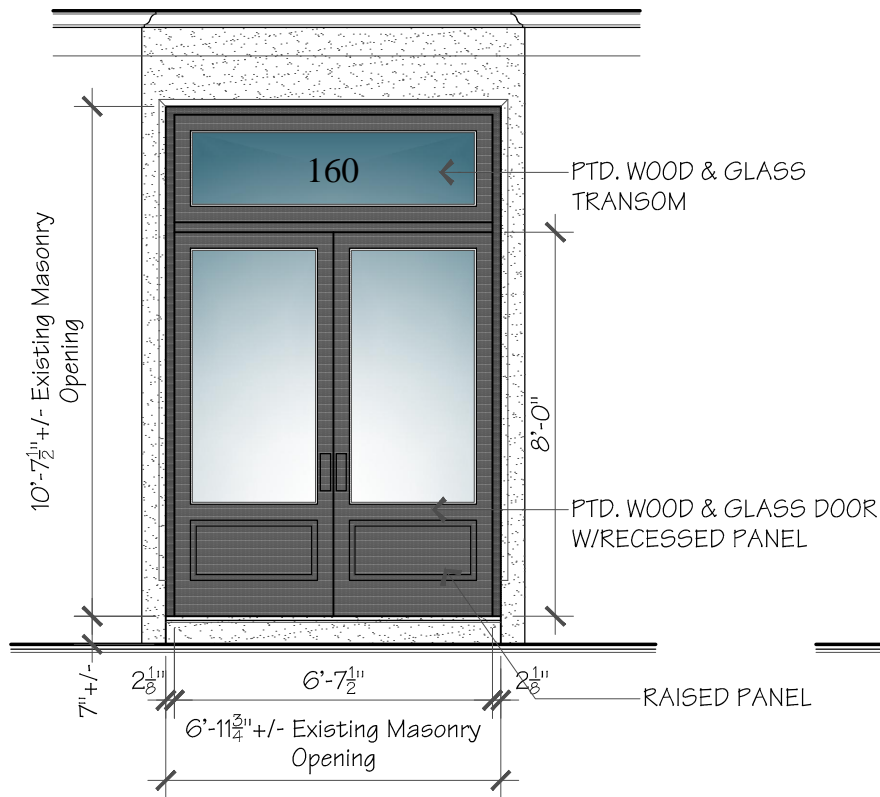


**PATRICK AHEARN**  
ARCHITECT

160 Commonwealth Avenue  
Suite L3  
Boston, MA 02116  
P: 617.266.1710  
F: 617.266.2276

Nevin Square  
17 Winter Street  
Edgartown, MA 02539  
P: 508.939.9312  
F: 508.939.9038

[www.patrickahearn.com](http://www.patrickahearn.com)

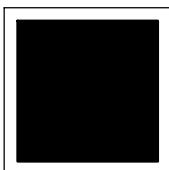


NOTE: PATCH, REPAIR, AND CLEAN  
EXISTING VESTIBULE/ENTRY TO MATCH EXISTING  
AS REQUIRED.  
UNITS TO BE INSULATED AND TEMPERED  
TO MEET CODE.



WROUGHT IRON  
GRATE OPTION -B

1



**Proposed Plan and Elevation**  
@160 COMMONWEALTH AVE. ENTRY  
Scale: 1/4" = 1'-0"

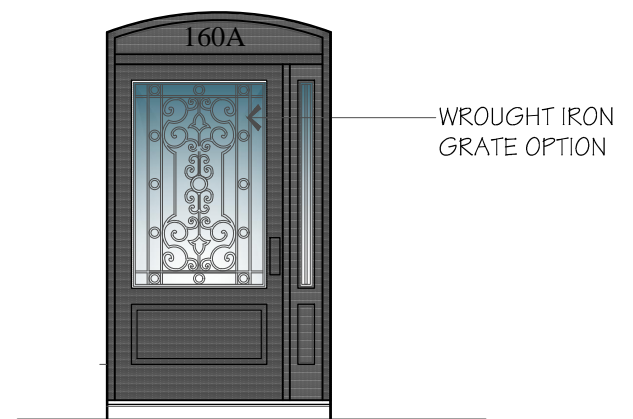
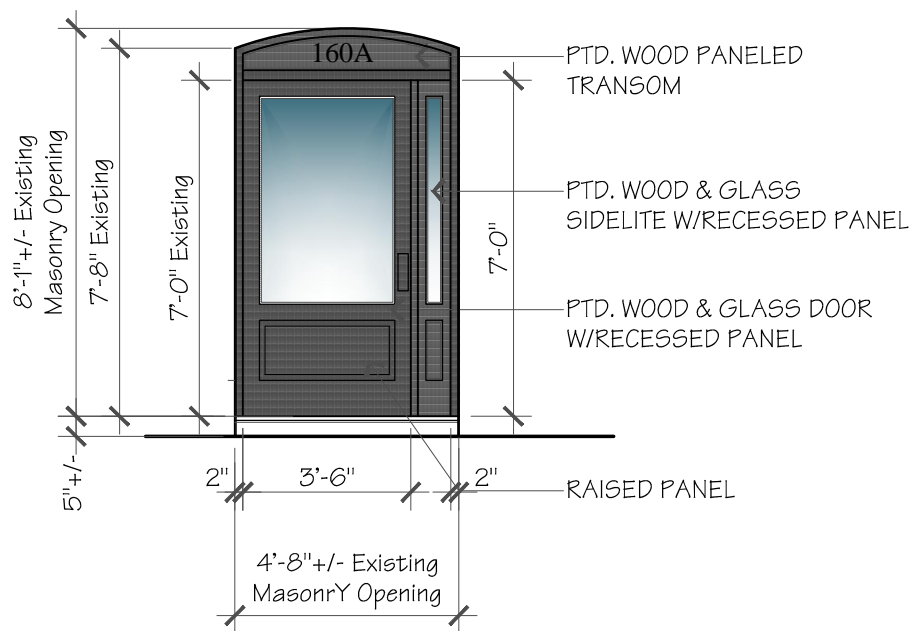
**PATRICK AHEARN**

ARCHITECT

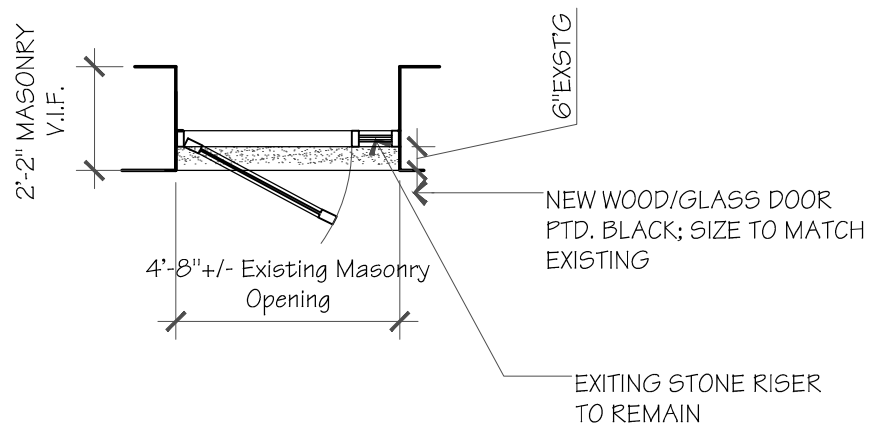
160 Commonwealth Avenue  
Suite L3  
Boston, MA 02116  
P: 617.266.1710  
F: 617.266.2276

Nevin Square  
17 Winter Street  
Edgartown, MA 02539  
P: 508.939.9312  
F: 508.939.9038

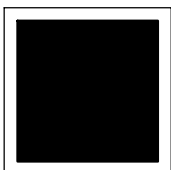
[www.patrickahearn.com](http://www.patrickahearn.com)



NOTE: PATCH, REPAIR, AND CLEAN EXISTING VESTIBULE/ENTRY TO MATCH EXISTING AS REQUIRED. UNITS TO BE INSULATED AND TEMPERED TO MEET CODE.



1



**Proposed Plan and Elevation**

@160A COMMONWEALTH AVE. ENTRY

Scale: 1/4" = 1'-0"