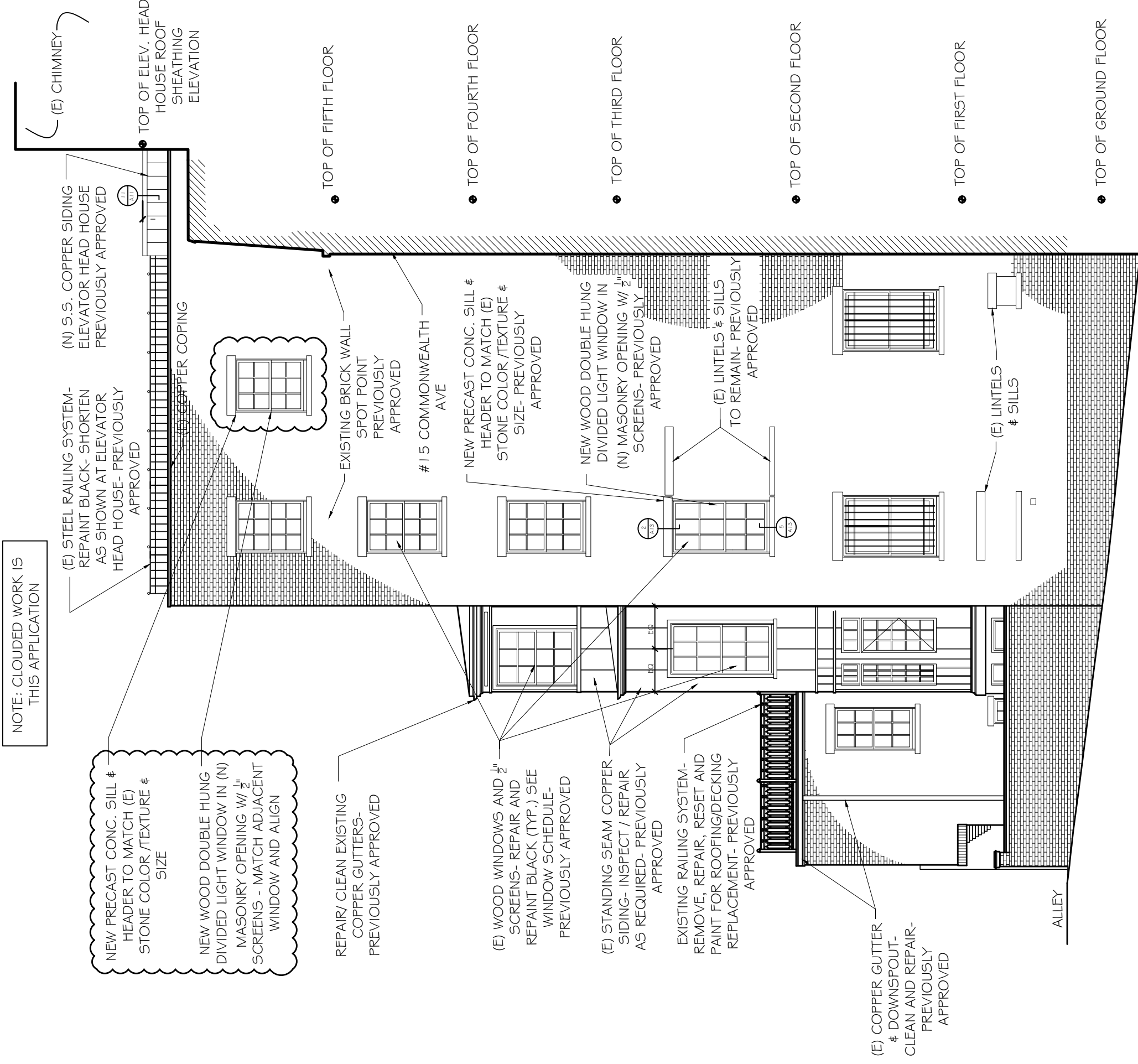




13 COMMONWEALTH AVE- WEST ELEVATION

NOTE: CLOUDED WORK IS THIS APPLICATION



NEW PRECAST CONC. SILL & HEADER TO MATCH (E) STONE COLOR /TEXTURE & SIZE

NEW WOOD DOUBLE HUNG DIVIDED LIGHT WINDOW IN (N) MASONRY OPENING W/ 1/2" SCREENS - MATCH ADJACENT WINDOW AND ALIGN

REPAIR/ CLEAN EXISTING COPPER GUTTERS- PREVIOUSLY APPROVED

(E) WOOD WINDOWS AND 1/2" SCREENS- REPAIR AND REPAINT BLACK (TYP.) SEE WINDOW SCHEDULE- PREVIOUSLY APPROVED

(E) STANDING SEAM COPPER SIDING- INSPECT / REPAIR AS REQUIRED- PREVIOUSLY APPROVED

EXISTING RAILING SYSTEM- REMOVE, REPAIR, RESET AND PAINT FOR ROOFING/DECKING REPLACEMENT- PREVIOUSLY APPROVED

(E) COPPER GUTTER & DOWNSPOUT- CLEAN AND REPAIR- PREVIOUSLY APPROVED

(E) STEEL RAILING SYSTEM- REPAINT BLACK- SHORTEN AS SHOWN AT ELEVATOR HEAD HOUSE- PREVIOUSLY APPROVED

(N) S.S. COPPER SIDING ELEVATOR HEAD HOUSE PREVIOUSLY APPROVED

(E) COPPER COPING

TOP OF FIFTH FLOOR

TOP OF FOURTH FLOOR

TOP OF THIRD FLOOR

TOP OF SECOND FLOOR

TOP OF FIRST FLOOR

TOP OF GROUND FLOOR

(E) CHIMNEY

TOP OF ELEV. HEAD HOUSE ROOF SHEATHING ELEVATION

EXISTING BRICK WALL SPOT POINT PREVIOUSLY APPROVED

15 COMMONWEALTH AVE

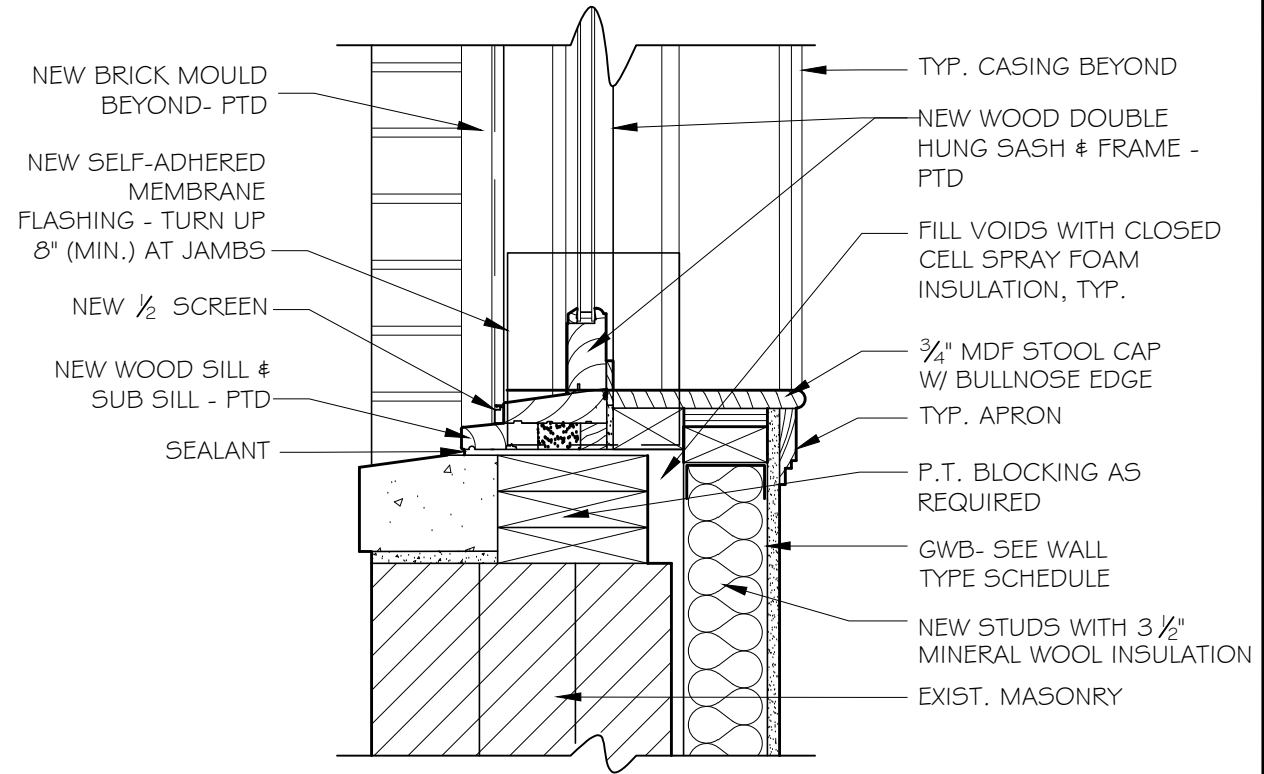
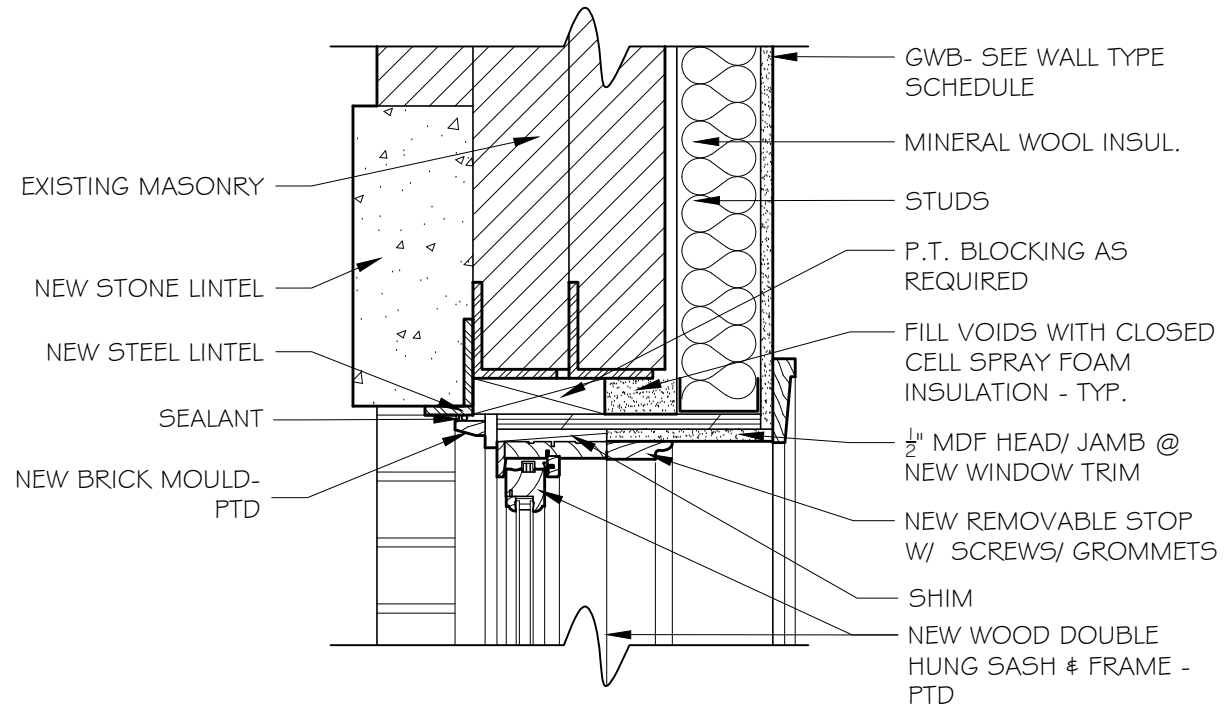
NEW PRECAST CONC. SILL & HEADER TO MATCH (E) STONE COLOR /TEXTURE & SIZE- PREVIOUSLY APPROVED

NEW WOOD DOUBLE HUNG DIVIDED LIGHT WINDOW IN (N) MASONRY OPENING W/ 1/2" SCREENS- PREVIOUSLY APPROVED

(E) LINTELS & SILLS TO REMAIN- PREVIOUSLY APPROVED

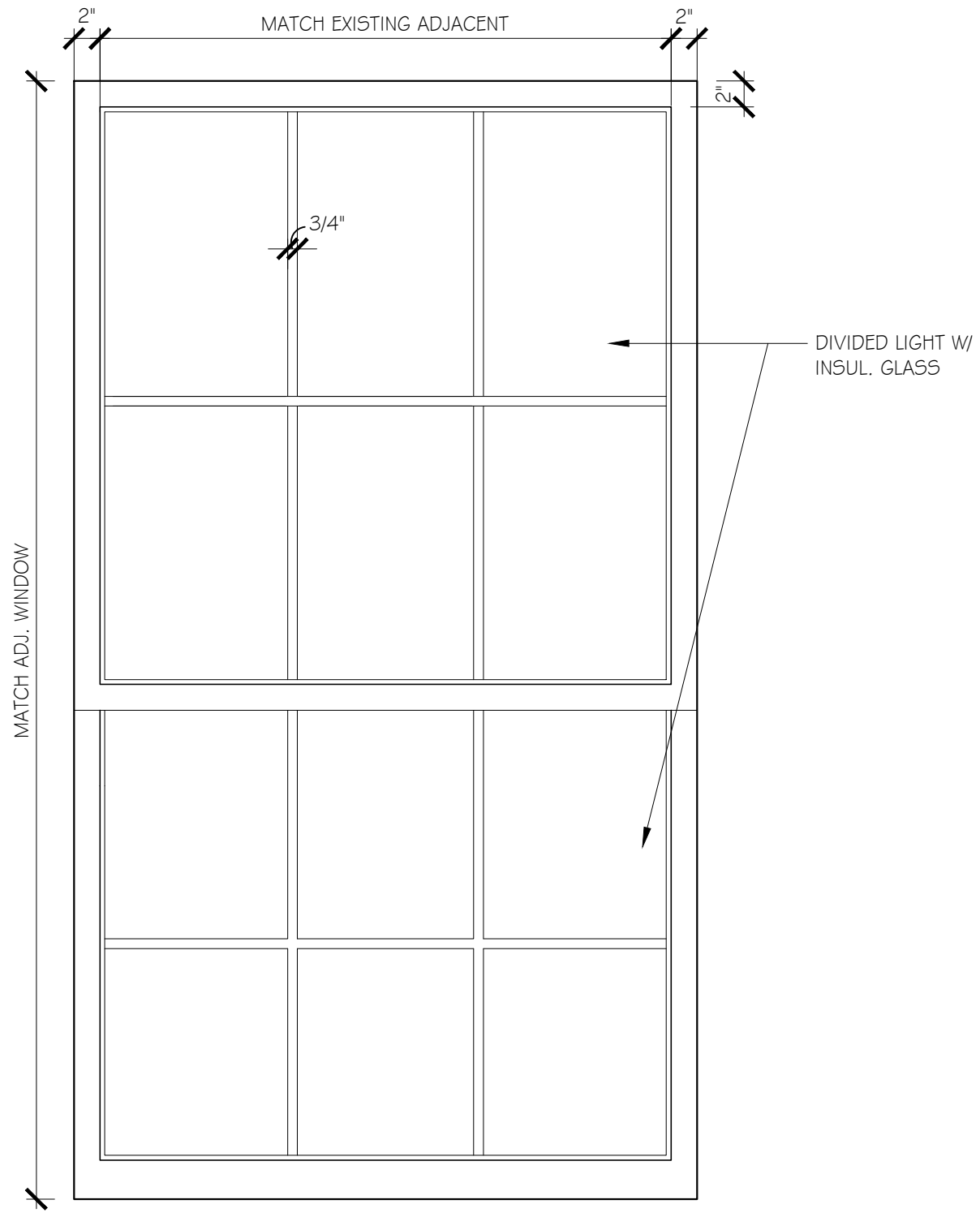
(E) LINTELS & SILLS

WEST ELEVATION
1/8" = 1'-0"

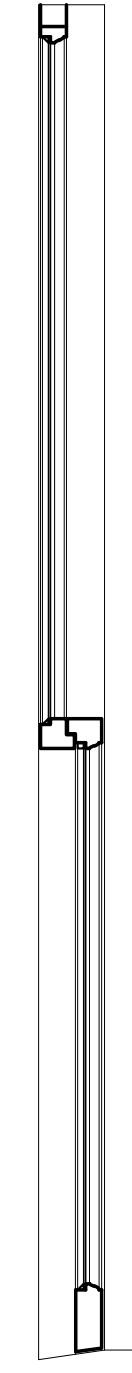


1 TYP. WINDOW HEAD DETAIL IN MASONRY OPNG 1 1/2" = 1'-0"

2 TYP. WINDOW SILL DETAIL IN MASONRY OPNG 1 1/2" = 1'-0"



TYPICAL WINDOW ELEVATION



TYPICAL WINDOW SECTION

JOB NO. 1601
SCALE: NTS
DATE: 6.4.18
REVISED

MANNION RESIDENCE
13 COMMONWEALTH AVE.
BOSTON, MASSACHUSETTS

NEW WINDOW SASH /
FRAME ELEVATION