

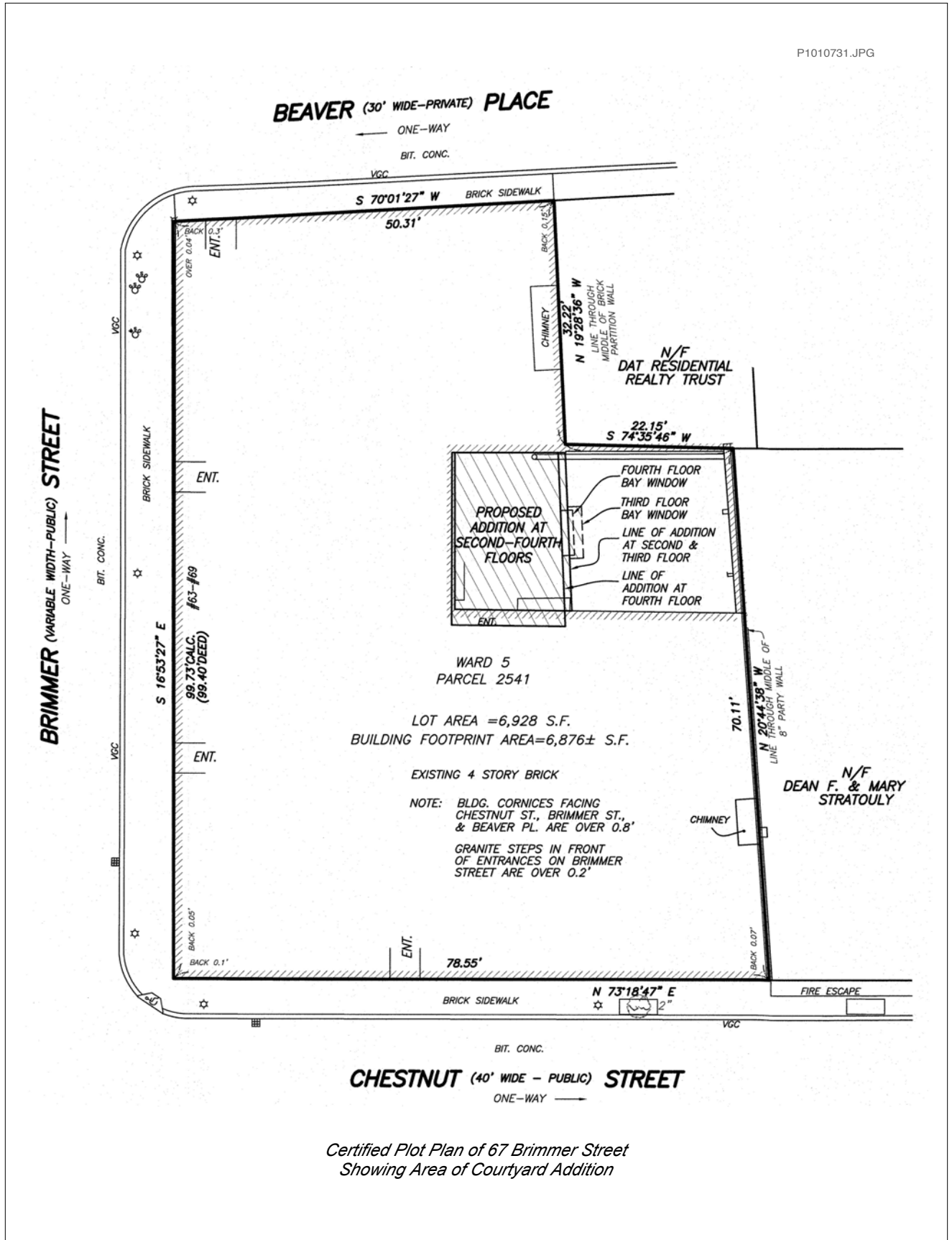


BRIMMER ST

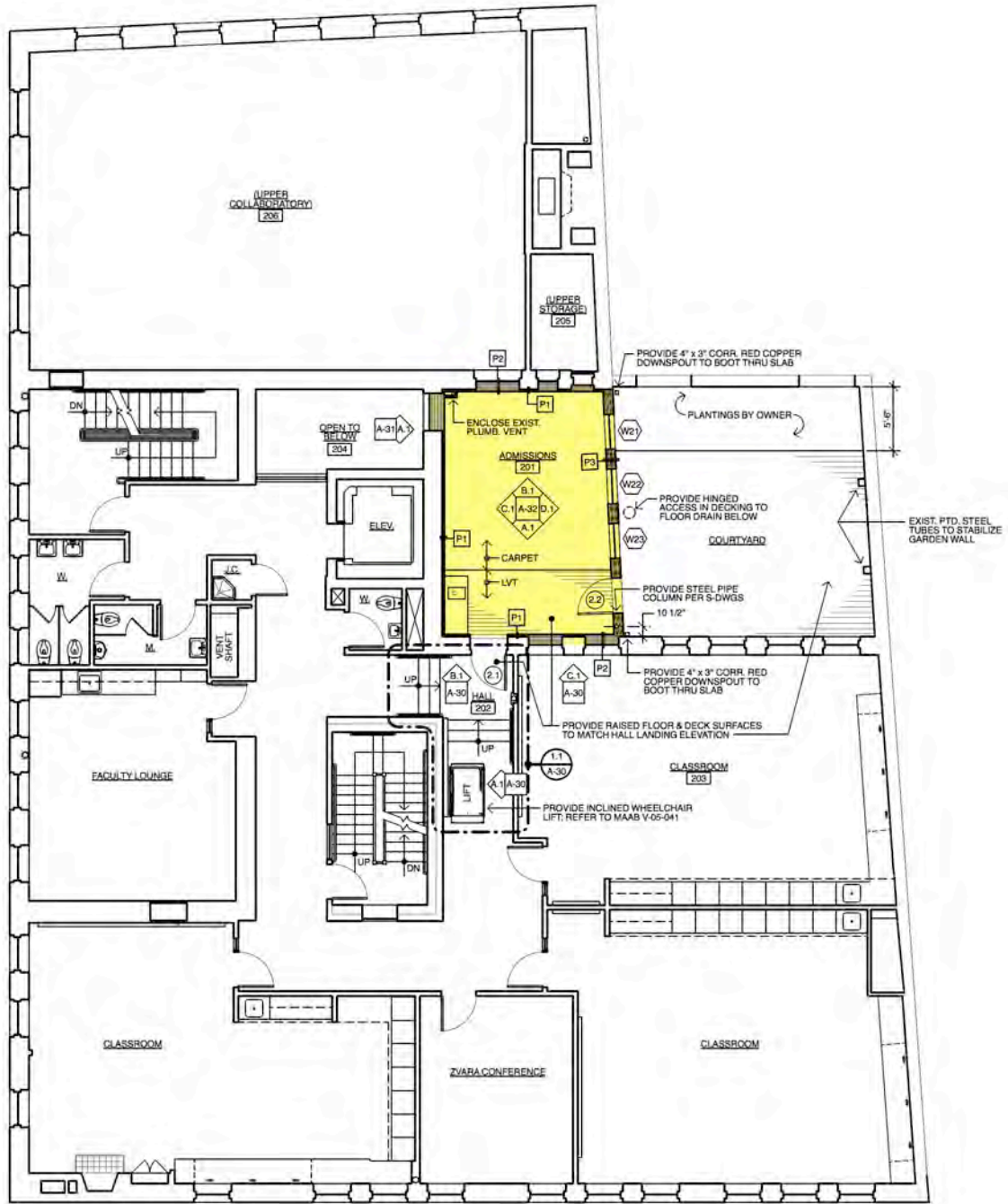
NUT ST

SCHOOL





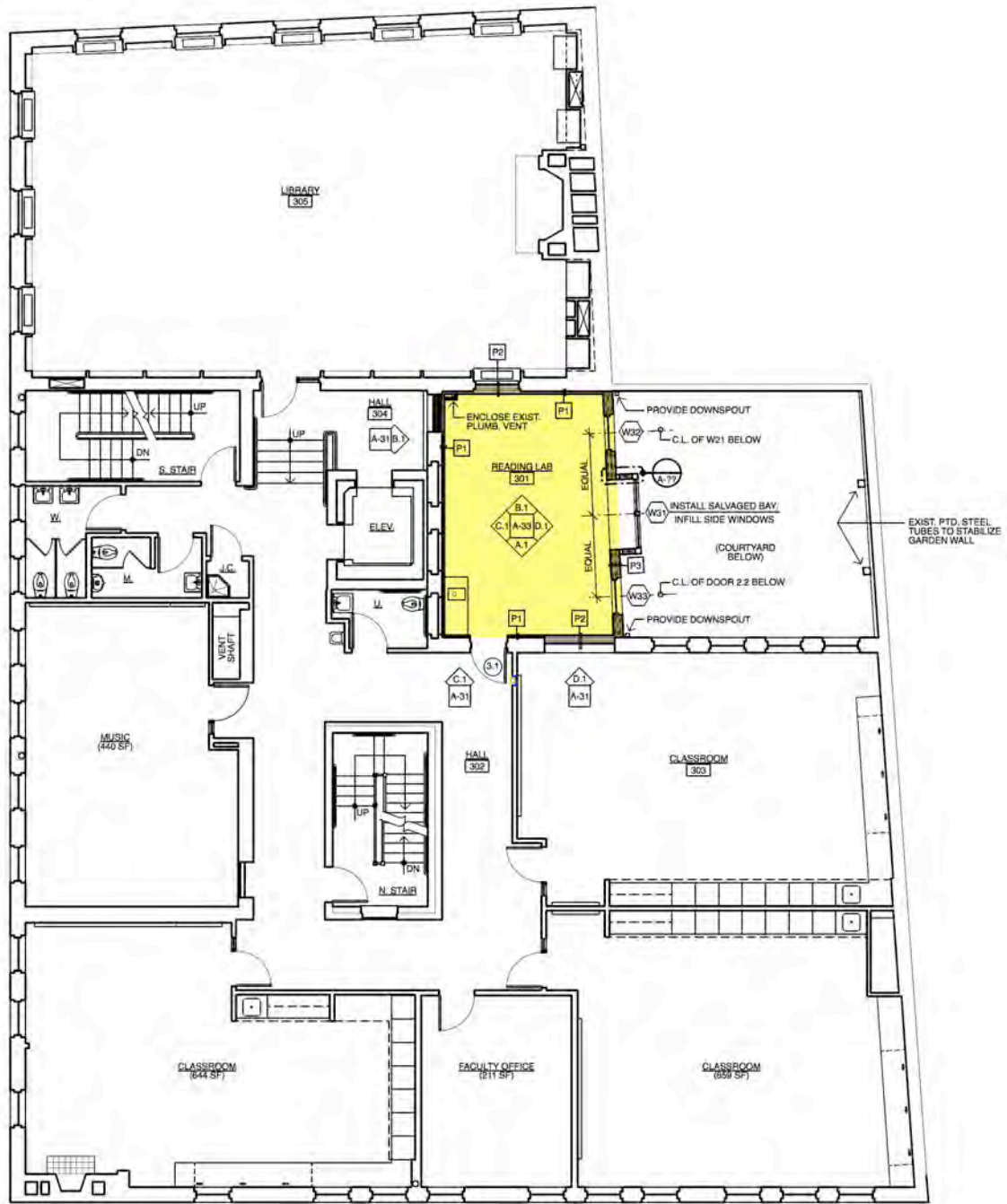
Certified Plot Plan of 67 Brimmer Street
Showing Area of Courtyard Addition



1.1 SECOND FLOOR PLAN
A-12 Scale: 1/8" = 1'-0"

NORTH

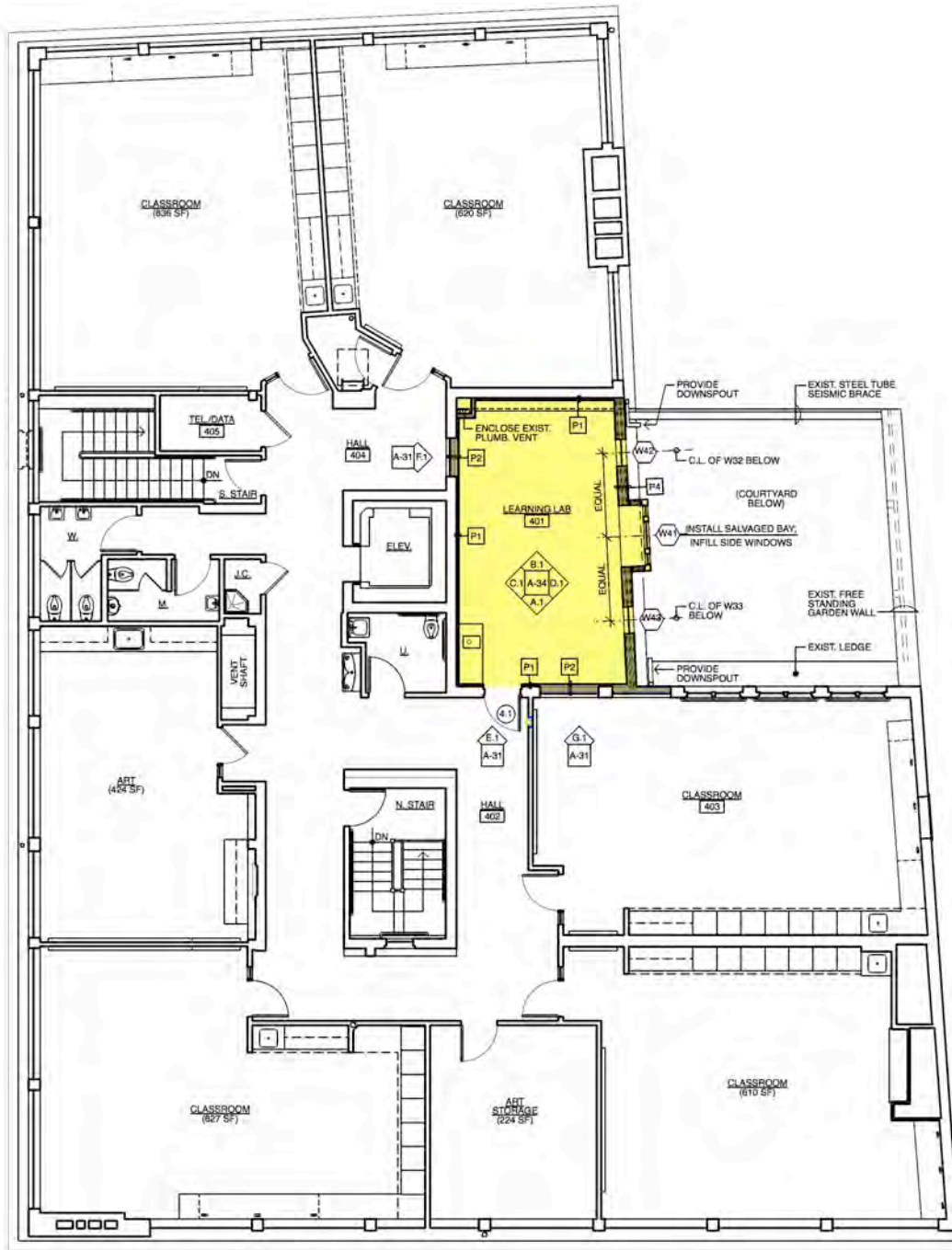
Second Floor Plan Showing Courtyard Addition



1.1 THIRD FLOOR PLAN
A-13 Scale: 1/8" = 1'-0"

NORTH

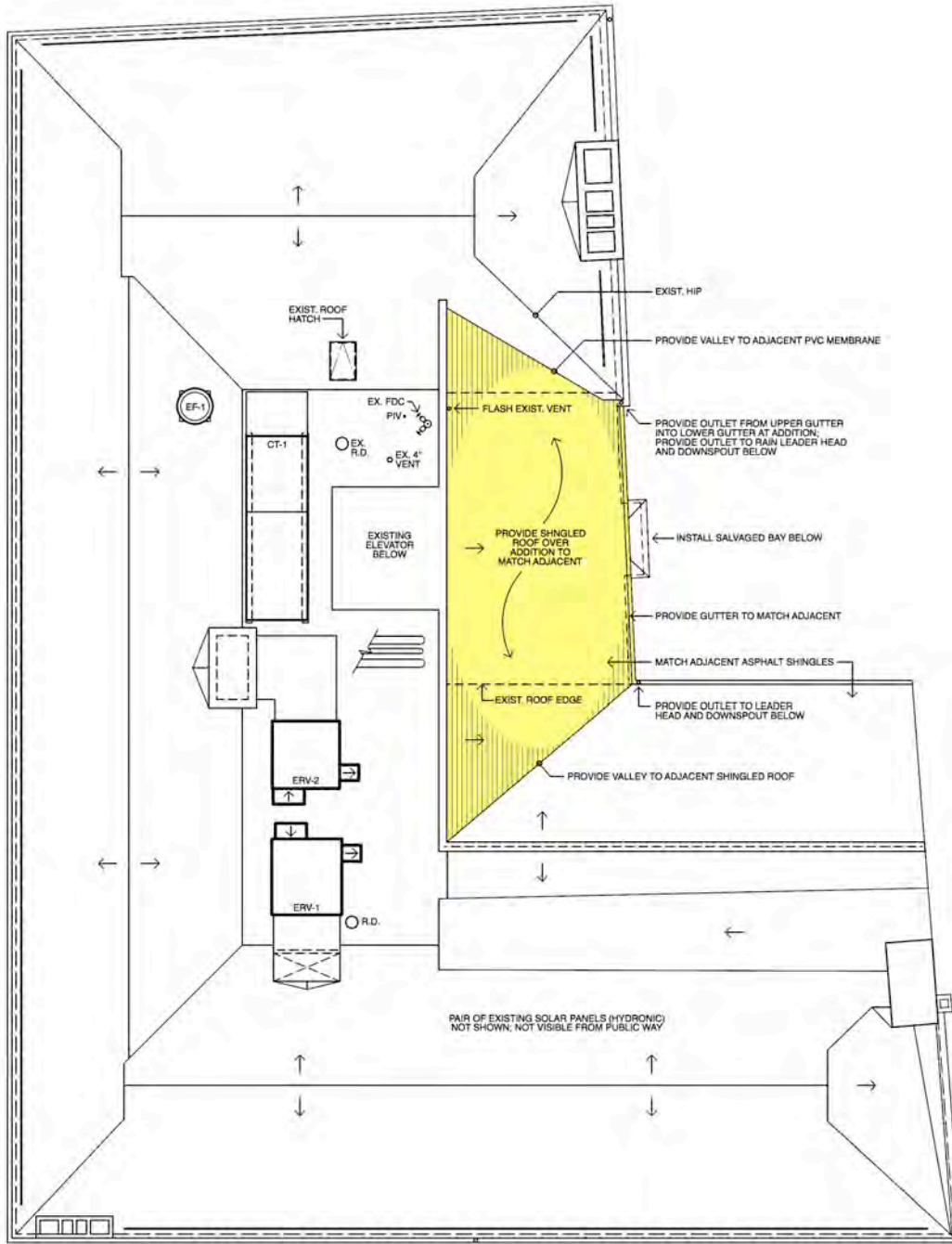
Third Floor Plan Showing Courtyard Addition



1.1 FOURTH FLOOR PLAN
A-14 Scale: 1/8" = 1'-0"

NORTH

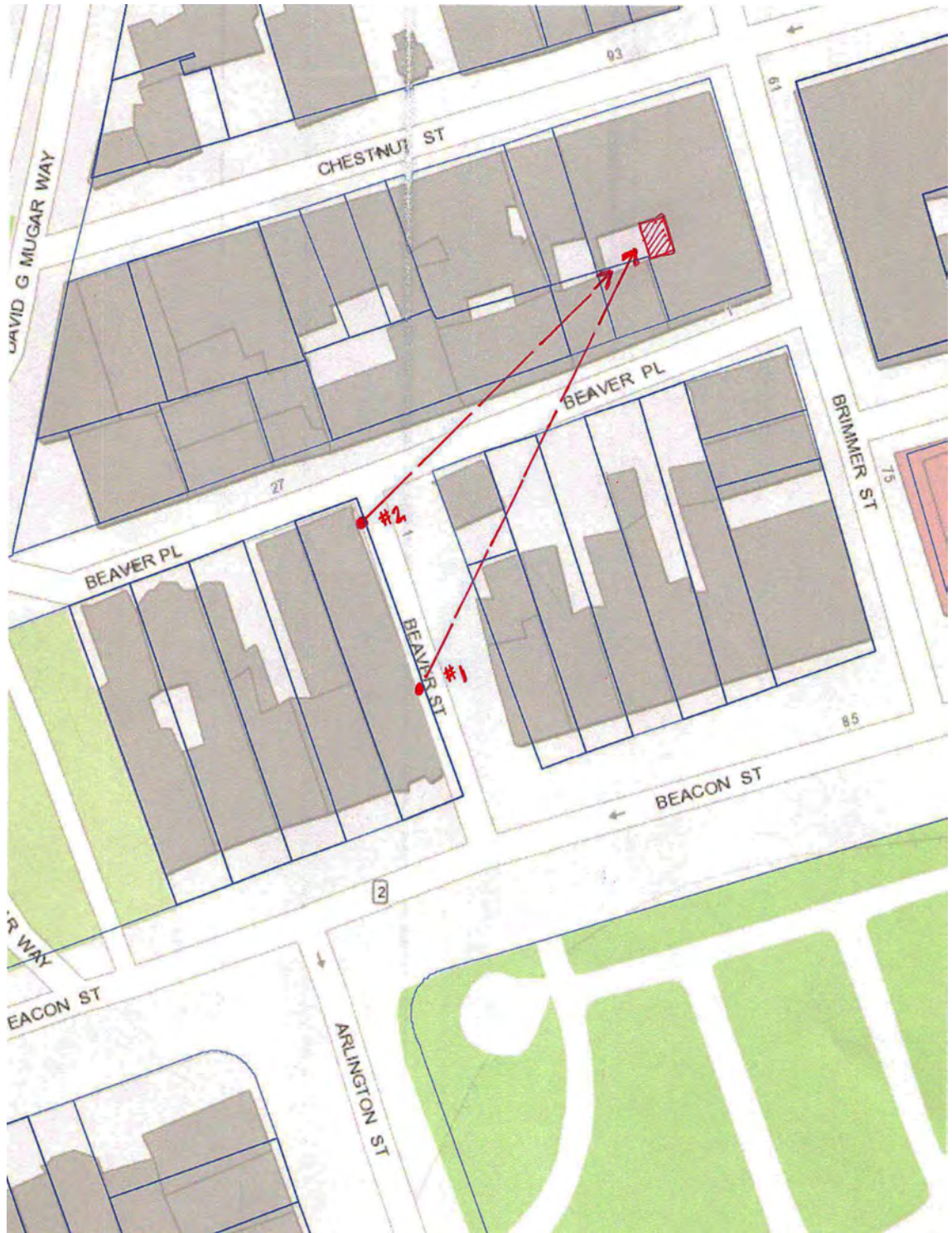
Fourth Floor Plan Showing Courtyard Addition



1.1 ROOF PLAN
A-15 Scale: 1/8" = 1'-0"

NORTH

Roof Plan Showing Courtyard Addition



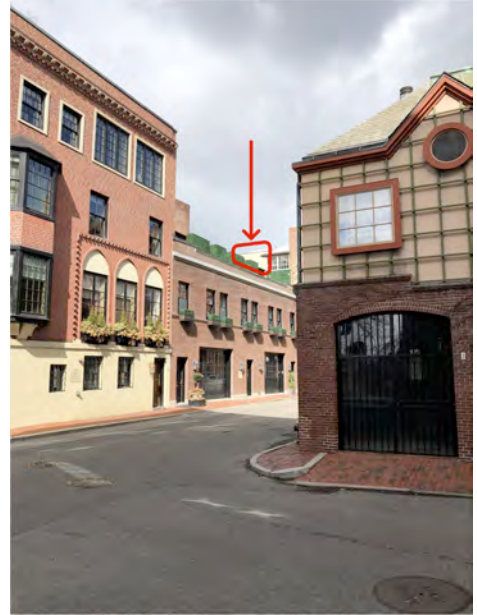
*Two Views from Public Way (Beaver Street);
Upper Portion of Courtyard Addition Visible;
#1 @ 230' Away and #2 @ 160' Away*

P1010732.JPG



*View #1 of 67 Brimmer from Beaver Street;
Distance of Approximately 230' Away*

P1010731.JPG



*View #2 of 67 Brimmer from Beaver Street;
Distance of Approximately 160' Away*

P1010734.JPG

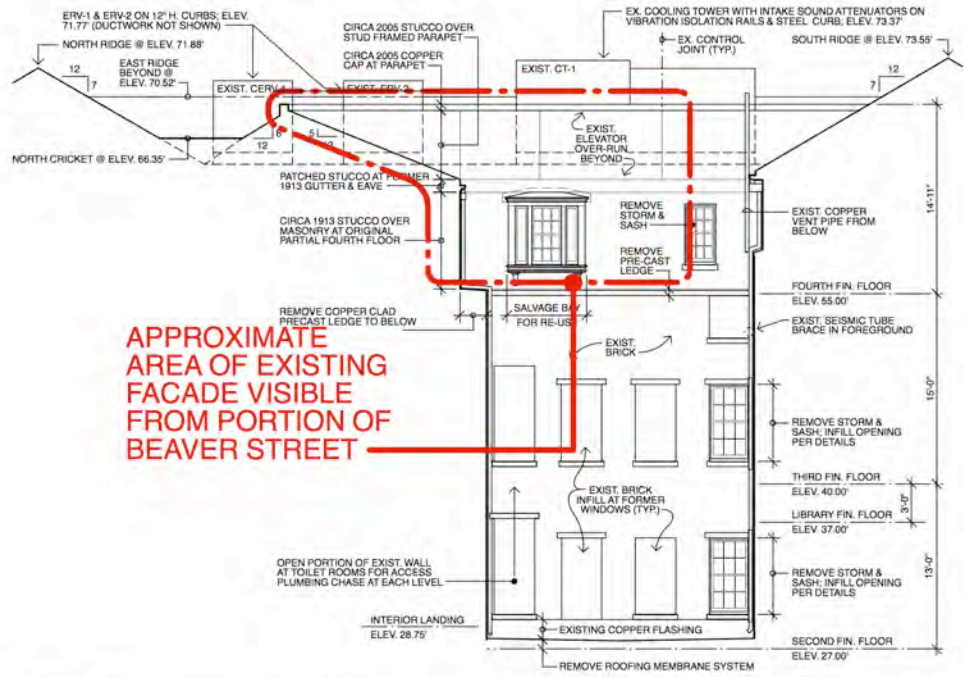


Zoomed in View #1 of 67 Brimmer from Beaver Street

P1010733.JPG

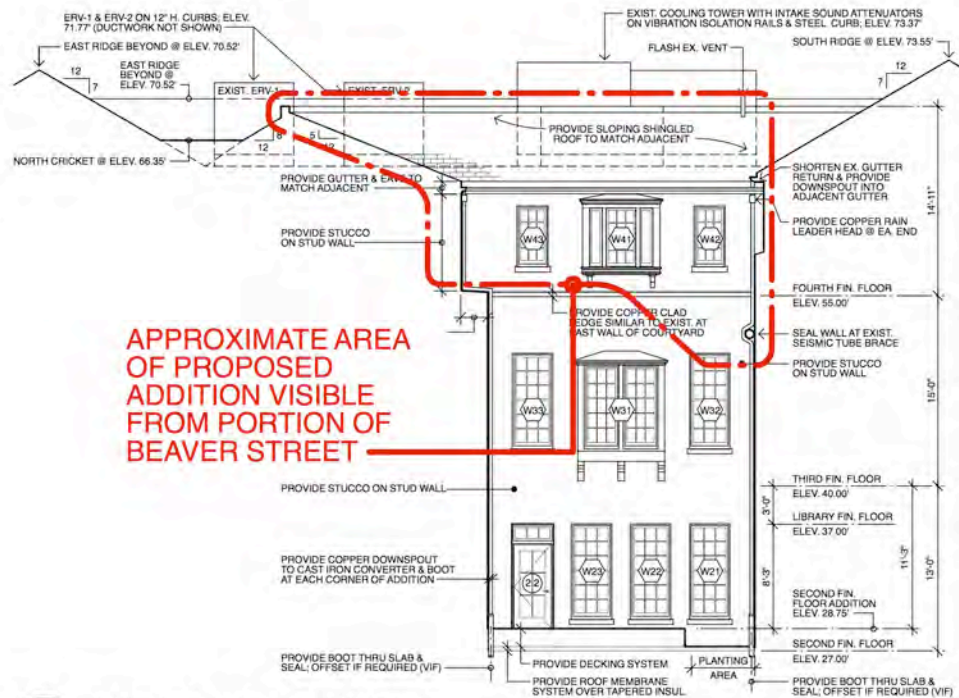


Zoomed in View #1 of 67 Brimmer from Beaver Street



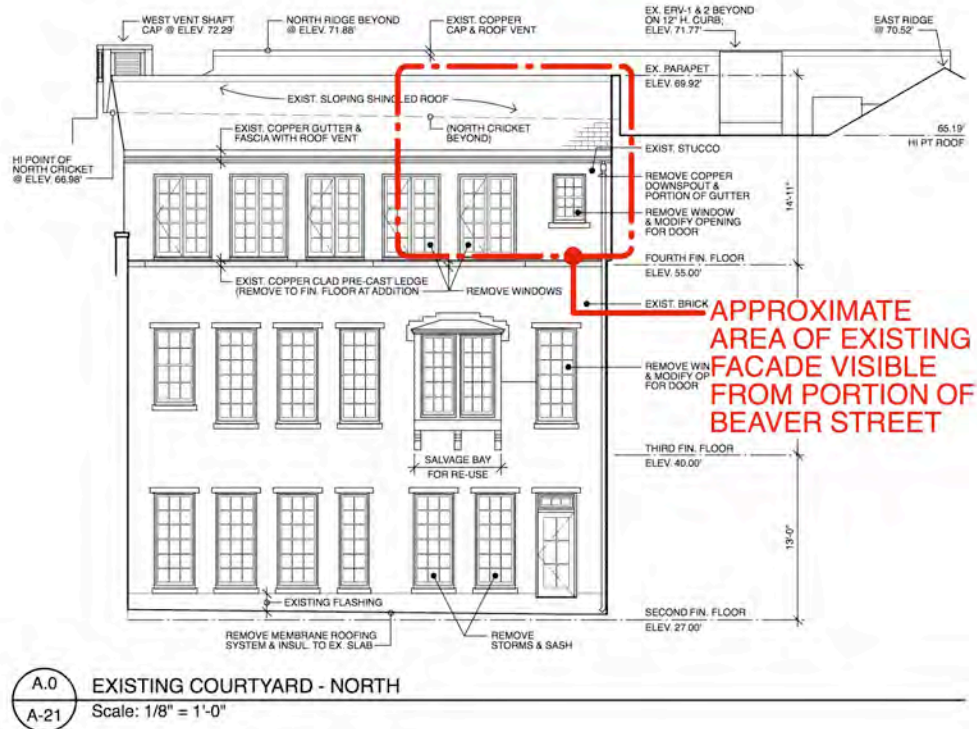
C.0 EXISTING COURTYARD - EAST
 A-21 Scale: 1/8" = 1'-0"

*Existing East Exterior Elevation of Courtyard;
 Circled Area Visible from Public Way*

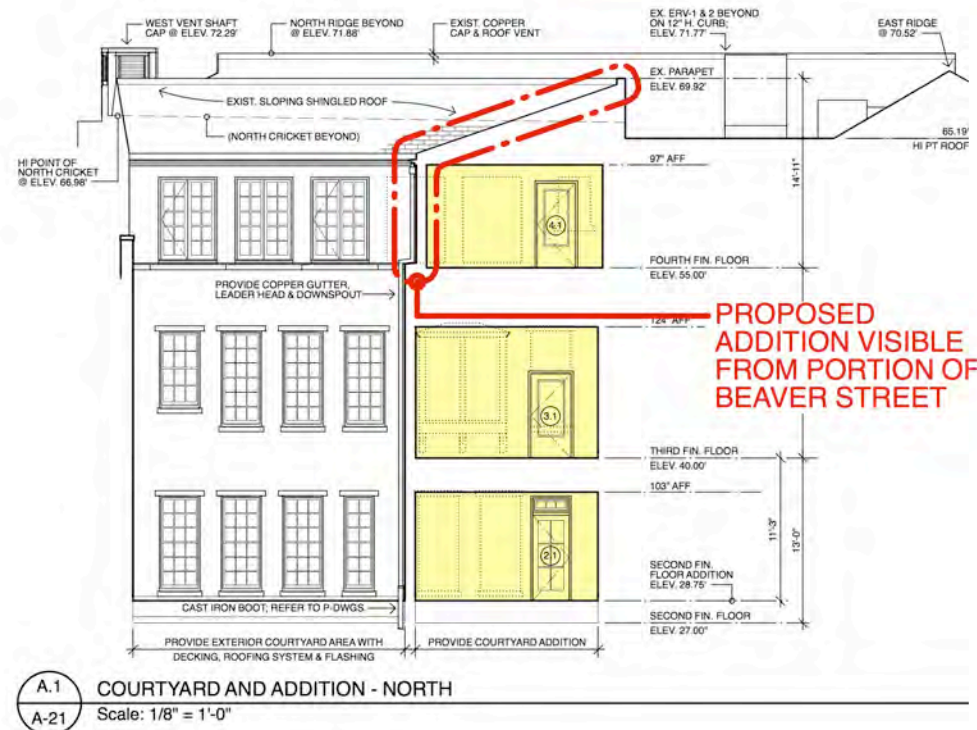


C.1 COURTYARD AND ADDITION - EAST
 A-21 Scale: 1/8" = 1'-0"

*Proposed East Exterior Elevation of Courtyard Addition;
 Circled Area Visible from Public Way*



*Existing North Exterior Elevation of Courtyard;
 Circled Area Visible from Public Way*



*Proposed North Exterior Elevation of Courtyard with Addition in Section;
 Circled Area Visible from Public Way*



Magnified View #2 Showing Existing Courtyard Facade



Sketch of Proposed Addition at Magnified Overlay of View #2



Magnified View #1 Showing Existing Courtyard Facade



Sketch of Proposed Addition at Magnified Overlay of View #1



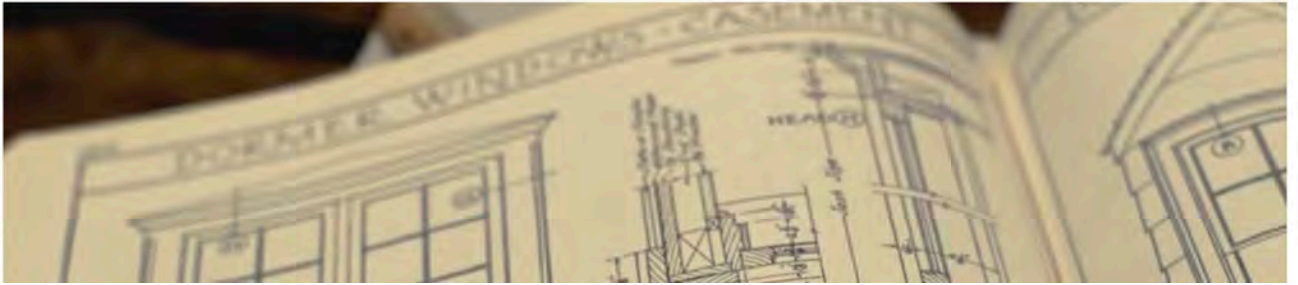
M. BORN



M. BORN

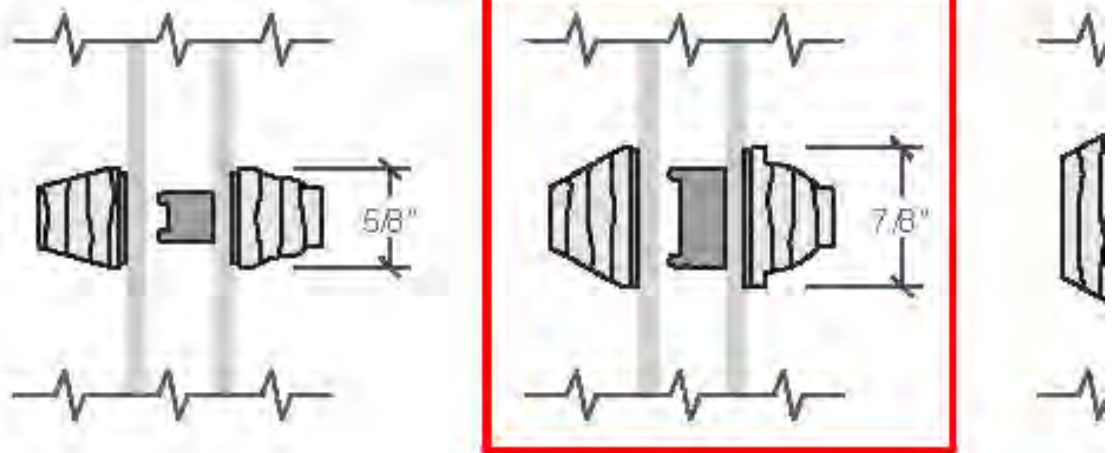
RESERVED FOR HISTORY

From our deep respect of the traditional window-making art, we were inspired to create our most historically authentic line of wood windows and patio doors: Architect Series Reserve. Made for the distinct creators, the purists of design, the architectural historians - each window is intricately crafted to achieve your design vision.



Proposed Wood Pella Architect Series Reserve Windows for Courtyard Addition

Putty Glaze and Ogee Grilles Wood Exterior - Wood Interior



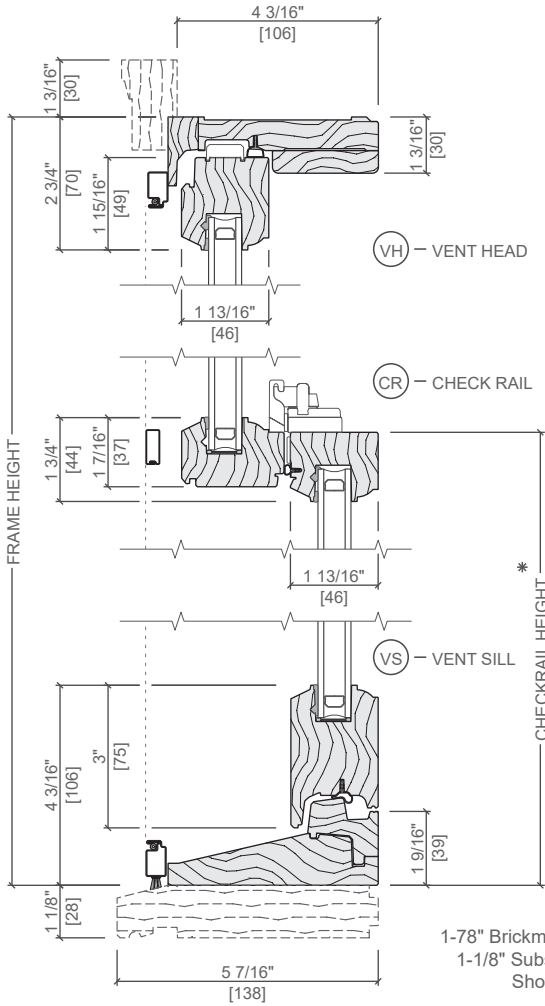
Proposed Wood Simulated Divided Light for Courtyard Addition Windows



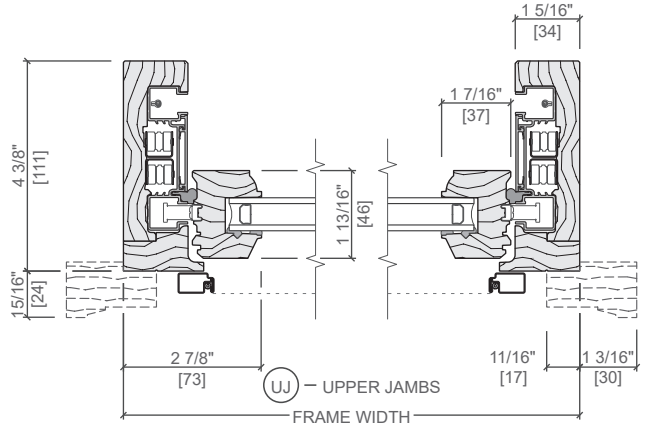
UNIT SECTIONS

Wood Exterior

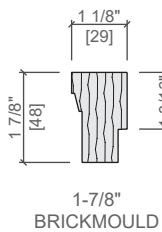
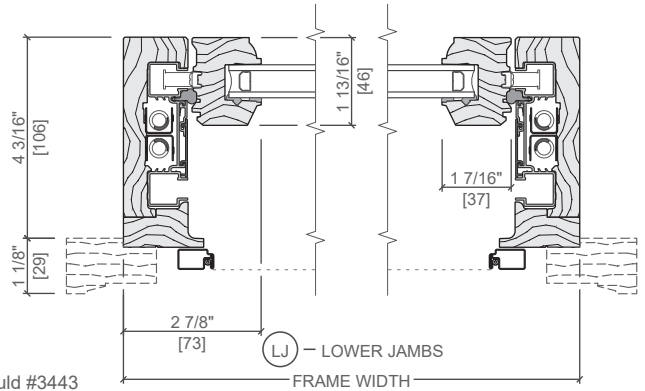
Vent - Putty Glaze Exterior Profile



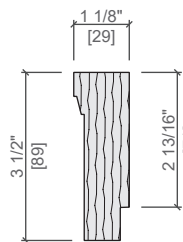
1-7/8" Brickmould #3443
1-1/8" Subsill #3544
Shown



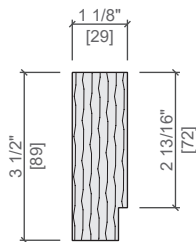
* Dimension required for ordering units with unequal sash.



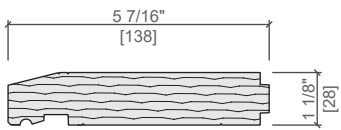
1-7/8" BRICKMOULD



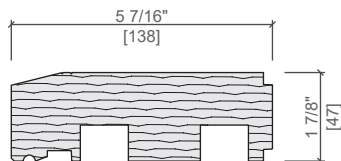
3-1/2" BRICKMOULD



3-1/2" FLAT CASING



OPTIONAL 1-1/8" SUBSILL



OPTIONAL 1-7/8" SUBSILL



Park Street
School

67