



Commonwealth of Massachusetts
Department of Conservation and Recreation

Charlie Baker, Governor
Karyn Polito, Lieutenant Governor
Matthew A. Beaton, Secretary
Executive Office of Energy and Environmental Affairs
Leo P. Roy, Commissioner
Department of Conservation and Recreation

Norman J. Orrall, P.E., Chief, Division of Land Planning
Department of Conservation and Recreation

South Bank Bridge Project Contract No. P13-2843-C1A Boston, Massachusetts

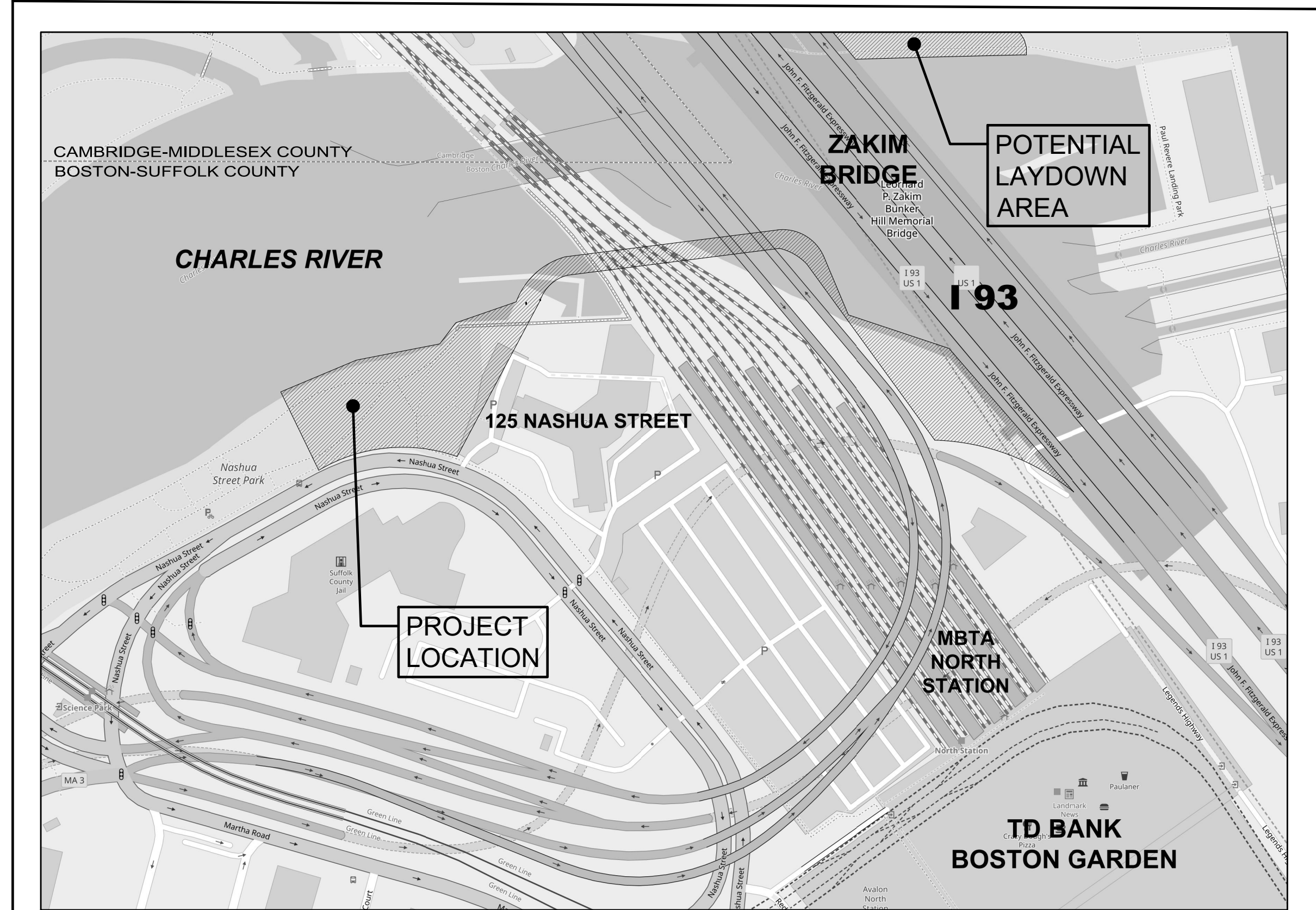
February 2, 2018

GPI 181 BALLARDVALE STREET, SUITE 202
WILMINGTON, MA 01887
Tel: 978.570-2999 Fax: 978.658-3044
<http://www.gpinet.com>

Engineering | Design | Planning | Construction Management

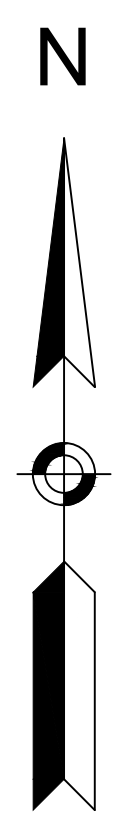
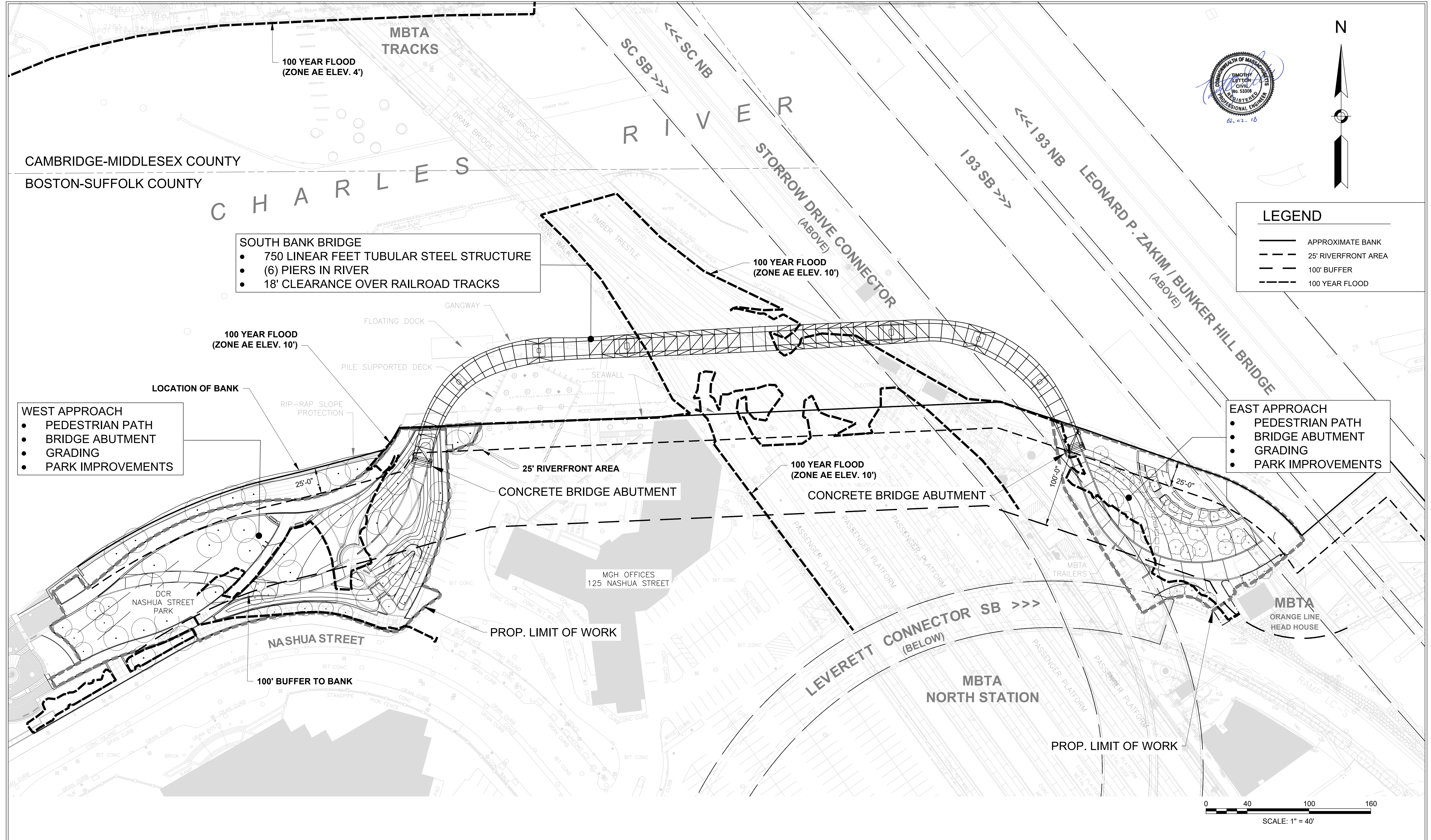
DESIGN TEAM

- GREENMAN-PEDERSEN, INC.**
PROJECT MANAGEMENT
SURVEY
PERMITTING
- SIMPSON GUMPERTZ & HEGER, INC.**
SOUTH BANK BRIDGE
- HALVORSON DESIGN PARTNERSHIP, INC.**
WEST BRIDGE LANDING
- CAROL R. JOHNSON ASSOCIATES, INC.**
EAST BRIDGE LANDING
- GZA GEOENVIRONMENTAL, INC.**
GEOTECHNICAL
- IRRIGATION CONSULTING, INC.**
IRRIGATION DESIGN
- ARCHITECTURAL ENGINEERS, INC.**
SITE LIGHTING



SHEET	TITLE
1	Title Sheet
2	Site Plan
3	Existing Conditions
4	Wetland Resource Area Impacts (Sheet 1 of 2)
5	Wetland Resource Area Impacts (Sheet 2 of 2)

NOTICE OF INTENT SUBMISSION		
DRAWING NAME: TITLE SHEET	PROJECT NO.: MAX-2013032.00	DRAWING NO.: 1 of 5



LEGEND

- APPROXIMATE BANK
- 25' RIVERFRONT AREA
- 100' BUFFER
- 100 YEAR FLOOD

SOUTH BANK BRIDGE

- 750 LINEAR FEET TUBULAR STEEL STRUCTURE
- (6) PIERS IN RIVER
- 18' CLEARANCE OVER RAILROAD TRACKS

WEST APPROACH

- PEDESTRIAN PATH
- BRIDGE ABUTMENT
- GRADING
- PARK IMPROVEMENTS

EAST APPROACH

- PEDESTRIAN PATH
- BRIDGE ABUTMENT
- GRADING
- PARK IMPROVEMENTS

GPI 181 BALLARDVALE STREET, SUITE 202
 WILMINGTON, MA 01887
 Tel: 978.570-2999 Fax: 978.658-3044
 http://www.gpinet.com

Engineering | Design | Planning | Construction Management

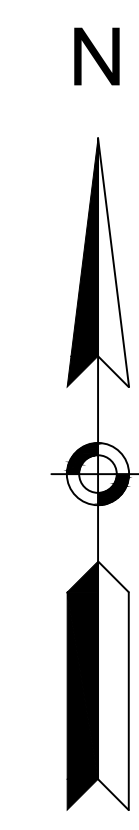


PROJECT: SOUTH BANK BRIDGE
 BOSTON, MASSACHUSETTS

PREPARED FOR: DEPARTMENT OF CONSERVATION AND RECREATION
 BOSTON, MASSACHUSETTS

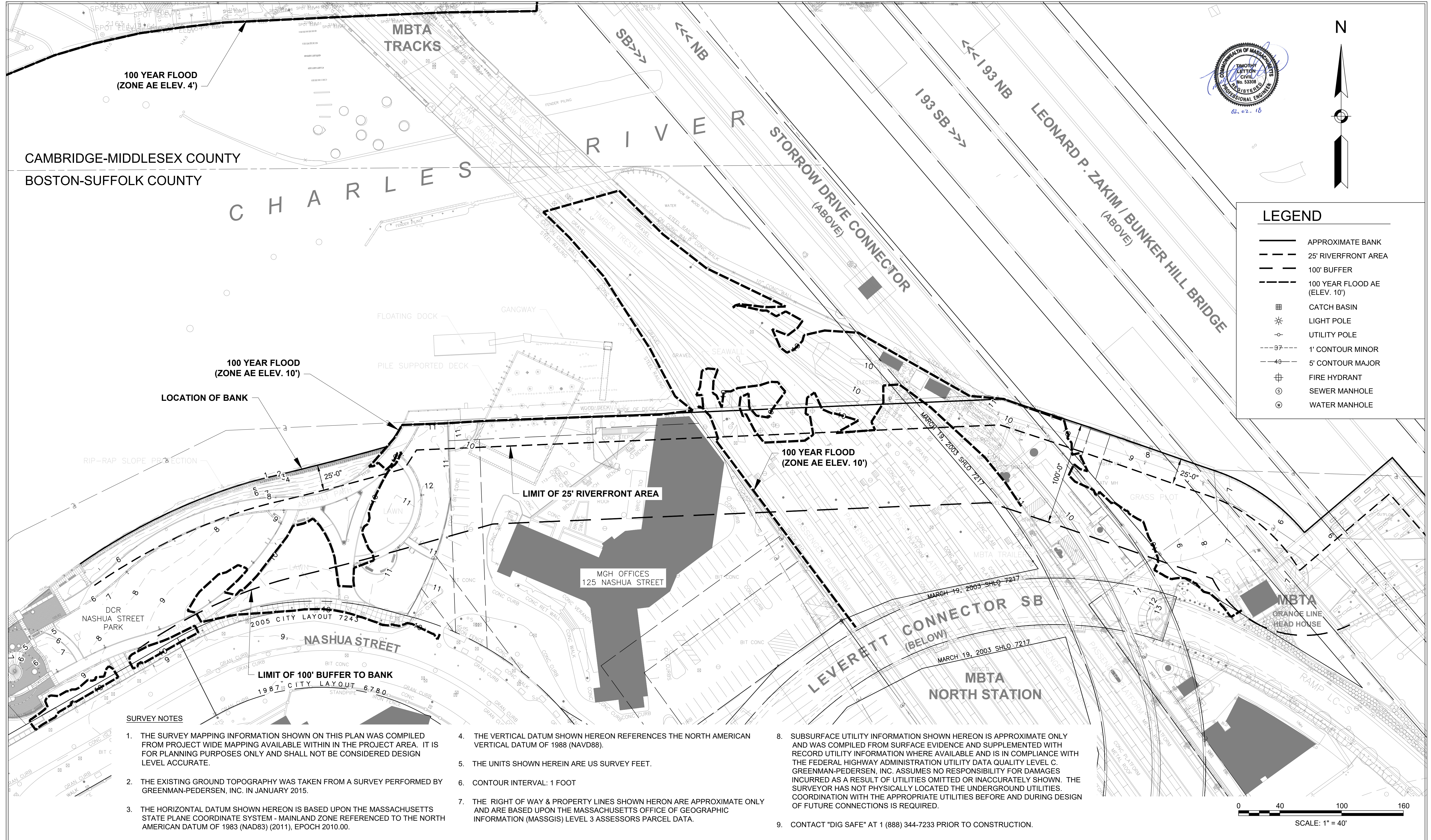
DRAWING TITLE : SITE PLAN

NO.	REVISION	DATE	DRAWN BY:
			BJE
			CHECK BY: RSH
			DATE: 2/2/2018
			SCALE: 1" = 40'
			JOB NO.: MAX-2012032
			FILE NAME:
			DRAWING NO.:



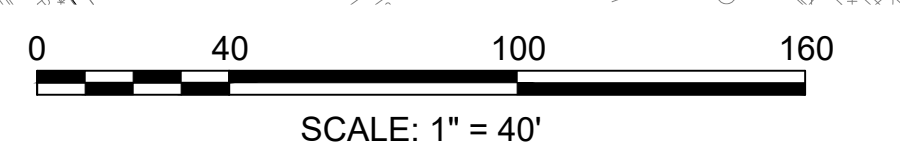
LEGEND

	APPROXIMATE BANK
	25' RIVERFRONT AREA
	100' BUFFER
	100 YEAR FLOOD AE (ELEV. 10')
	CATCH BASIN
	LIGHT POLE
	UTILITY POLE
	1' CONTOUR MINOR
	5' CONTOUR MAJOR
	FIRE HYDRANT
	SEWER MANHOLE
	WATER MANHOLE



SURVEY NOTES

1. THE SURVEY MAPPING INFORMATION SHOWN ON THIS PLAN WAS COMPILED FROM PROJECT WIDE MAPPING AVAILABLE WITHIN IN THE PROJECT AREA. IT IS FOR PLANNING PURPOSES ONLY AND SHALL NOT BE CONSIDERED DESIGN LEVEL ACCURATE.
2. THE EXISTING GROUND TOPOGRAPHY WAS TAKEN FROM A SURVEY PERFORMED BY GREENMAN-PEDERSEN, INC. IN JANUARY 2015.
3. THE HORIZONTAL DATUM SHOWN HEREON IS BASED UPON THE MASSACHUSETTS STATE PLANE COORDINATE SYSTEM - MAINLAND ZONE REFERENCED TO THE NORTH AMERICAN DATUM OF 1983 (NAD83) (2011), EPOCH 2010.00.
4. THE VERTICAL DATUM SHOWN HEREON REFERENCES THE NORTH AMERICAN VERTICAL DATUM OF 1988 (NAVD88).
5. THE UNITS SHOWN HEREIN ARE US SURVEY FEET.
6. CONTOUR INTERVAL: 1 FOOT
7. THE RIGHT OF WAY & PROPERTY LINES SHOWN HEREON ARE APPROXIMATE ONLY AND ARE BASED UPON THE MASSACHUSETTS OFFICE OF GEOGRAPHIC INFORMATION (MASSGIS) LEVEL 3 ASSESSORS PARCEL DATA.
8. SUBSURFACE UTILITY INFORMATION SHOWN HEREON IS APPROXIMATE ONLY AND WAS COMPILED FROM SURFACE EVIDENCE AND SUPPLEMENTED WITH RECORD UTILITY INFORMATION WHERE AVAILABLE AND IS IN COMPLIANCE WITH THE FEDERAL HIGHWAY ADMINISTRATION UTILITY DATA QUALITY LEVEL C. GREENMAN-PEDERSEN, INC. ASSUMES NO RESPONSIBILITY FOR DAMAGES INCURRED AS A RESULT OF UTILITIES OMITTED OR INACCURATELY SHOWN. THE SURVEYOR HAS NOT PHYSICALLY LOCATED THE UNDERGROUND UTILITIES. COORDINATION WITH THE APPROPRIATE UTILITIES BEFORE AND DURING DESIGN OF FUTURE CONNECTIONS IS REQUIRED.
9. CONTACT "DIG SAFE" AT 1 (888) 344-7233 PRIOR TO CONSTRUCTION.



GPI 181 BALLARDVALE STREET, SUITE 202
WILMINGTON, MA 01887
Tel: 978.570-2999 Fax: 978.658-3044
http://www.gpinet.com

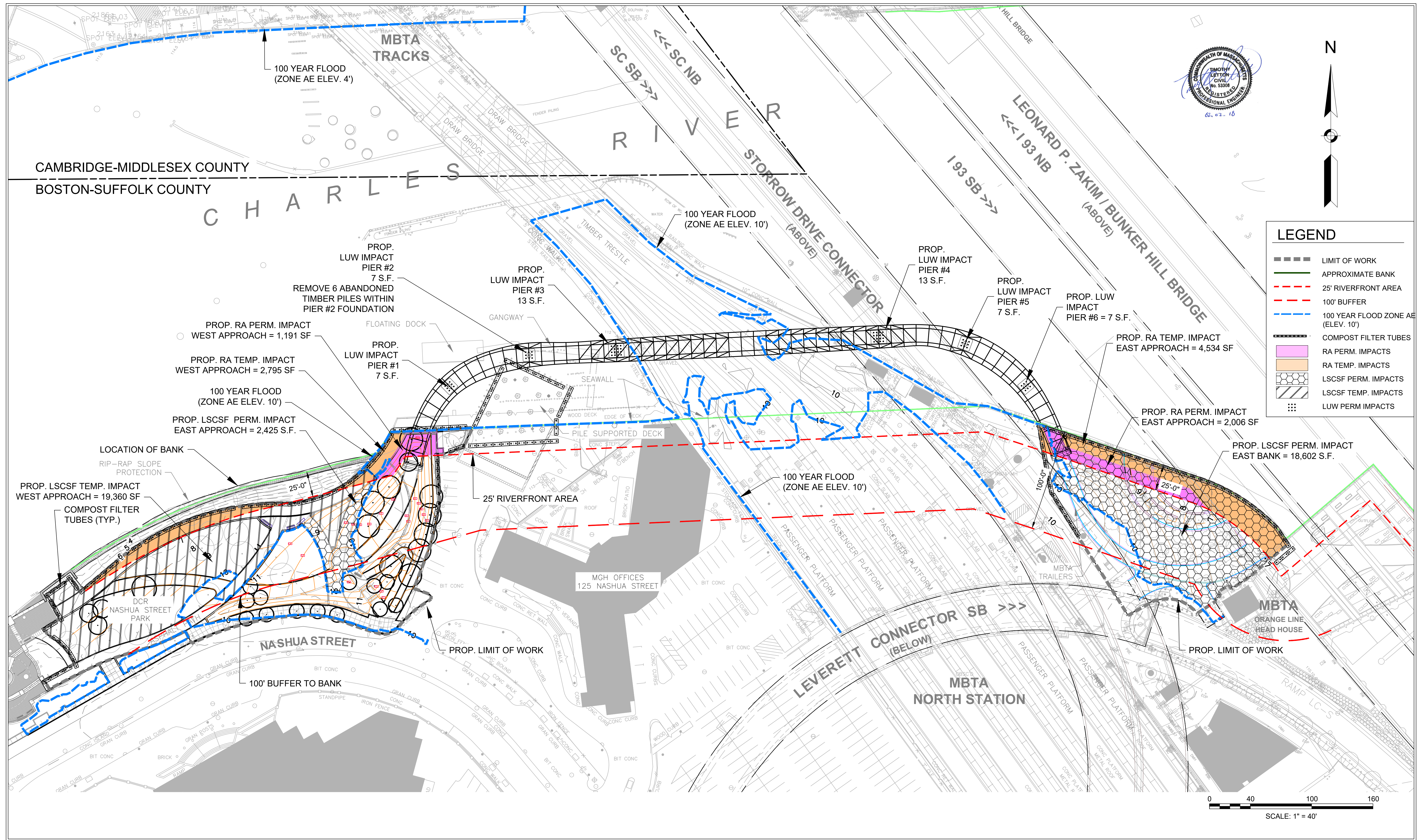


PROJECT: SOUTH BANK BRIDGE
BOSTON, MASSACHUSETTS

PREPARED FOR: DEPARTMENT OF CONSERVATION AND RECREATION
BOSTON, MASSACHUSETTS

DRAWING TITLE: EXISTING CONDITIONS

NO.	REVISION	DATE	DRAWN BY:
			BJE
			CHECK BY: RSH
			DATE: 2/2/2018
			SCALE: 1" = 40'
			JOB NO.: MAX-2012032
			FILE NAME:
			DRAWING NO.:



GPI 181 BALLARDVALE STREET, SUITE 202
 WILMINGTON, MA 01887
 Tel: 978.570-2999 Fax: 978.658-3044
 http://www.gpinet.com

Engineering | Design | Planning | Construction Management

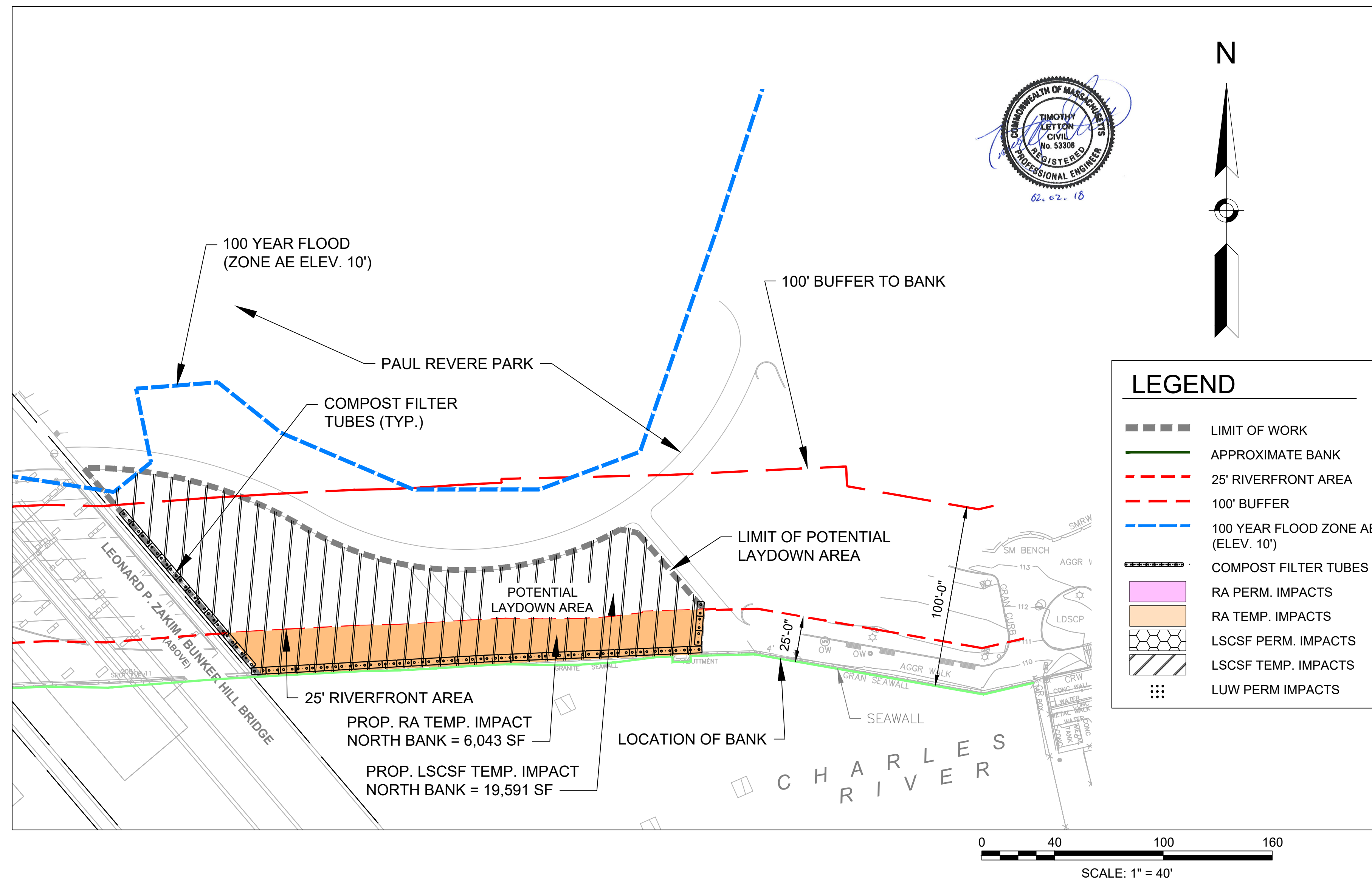
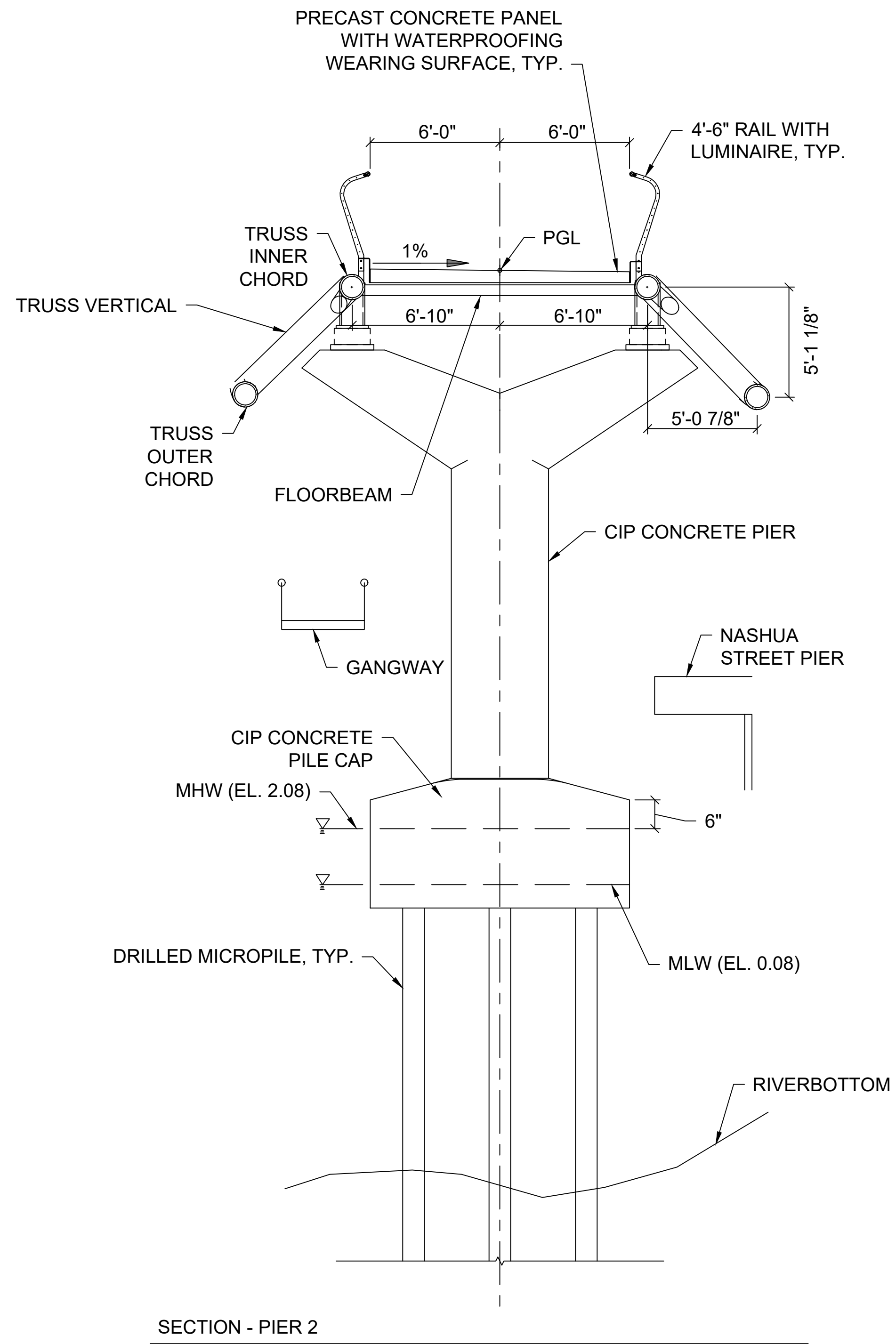


PROJECT: SOUTH BANK BRIDGE
 BOSTON, MASSACHUSETTS

PREPARED FOR: DEPARTMENT OF CONSERVATION AND RECREATION
 BOSTON, MASSACHUSETTS

DRAWING TITLE: WETLAND RESOURCE AREA IMPACTS
 (SHEET 1 OF 2)

NO.	REVISION	DATE	DRAWN BY:
			BJE
			CHECK BY: RSH
			DATE: 2/2/2018
			SCALE: 1" = 40'
			JOB NO.: MAX-2012032
			FILE NAME:
			DRAWING NO.:



NO.	REVISION	DATE	DRAWN BY:
			BJE
			CHECK BY: RSH
			DATE: 2/2/2018
			SCALE: 1" = 40'
			JOB NO.: MAX-2012032
			FILE NAME:
			DRAWING NO.: