

*(Continued from Application Form III. Description of Proposed Work)*

### **Project Goals:**

The construction of the Scarborough Pond crossing is intended to:

- Eliminate golf cart related traffic on the stone arch bridge thus reestablishing pedestrian only traffic
- Realign golf cart paths to reduce wear and tear on the 16<sup>th</sup> and 17<sup>th</sup> golf holes and achieve a significant net reduction in the total length of cart paths in this vicinity.
- Eliminate delays caused by the circulation conflicts and bottlenecks that occurs at the stone arch bridge.
- Reduce safety hazards (players proceeding from the 17<sup>th</sup> tee to the 17<sup>th</sup> fairway now must reverse their direction and cross in front of the 16<sup>th</sup> green, cross the historic stone arch bridge, then cross the 16<sup>th</sup> golf fairway to access the 17<sup>th</sup> fairway and green. This circulation pattern puts players on both sides of the pond in the direct path of approaching golf shots from the 16<sup>th</sup> fairway.

### **Project Specifics:**

The project involves the construction of a cart boardwalk at Scarborough Pond, several short legs of asphalt cart path, limited grading, removal of redundant cart path sections, and turf reestablishment. The precedent for cart paths is well established throughout the golf course.

The Scarborough Pond crossing is achieved by the construction of a mostly wooden boardwalk structure. The structure's alignment meanders and dips in elevation at the center. The boardwalk is 150' in length x 8' in total width, with a 6' clear usable width for carts and pedestrians.

Specifications include:

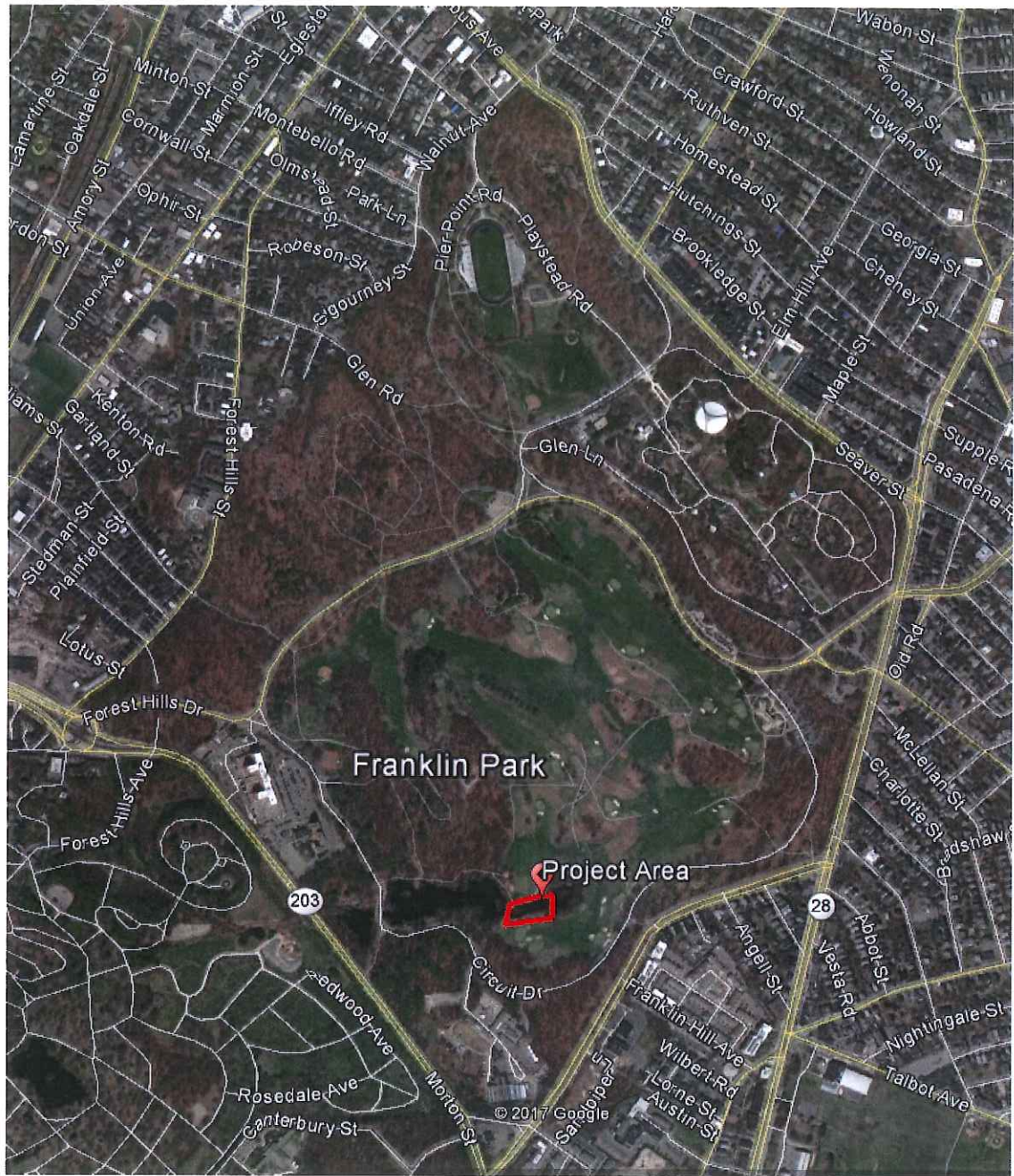
- Wood beams, stringers, decking and curbing
- Rail system that includes wood posts (10-foot on center) with horizontal stainless-steel cables
- Helical steel piles and lateral supports
- Concrete abutments (both buried)

### **Design Aesthetic:**

As custodian of the critically important landscapes that make up Franklin Park, the BPRD has sought to strike the proper aesthetic balance in the design of the Scarborough Crossing. The aesthetic qualities are described as follows:

- The low-profile cart boardwalk with cable rail system is intended to minimize visual disruption to the landscape and be visually distinct from the historic stone arch bridge that dates to the construction of the park.
- The design of the cart boardwalk itself is intended to be attractive and compatible with the naturalistic pond, meadow and woodland landscape that surrounds.

Locus Map:



Photos:



Location of the proposed cart boardwalk crossing. 17<sup>th</sup> back tee is immediately to the right in the photo and 17<sup>th</sup> front tee, fairway and green are across the pond. 16<sup>th</sup> golf hole is to the left in the photo. The cart boardwalk would extend from just to the right of the yellow stake in the foreground to the left of the black stake across the pond near the forward tee.



Looking the reverse direction, with the 17<sup>th</sup> back tee located across the pond and the 16<sup>th</sup> golf hole located to the right in the photo. The proposed cart boardwalk crossing would connect from about the wooden post in foreground to the right of the back tee across the pond.



The iconic stone arch bridge. The new cart boardwalk will eliminate golf cart related traffic from this bridge and reestablish the historic bridge to pedestrian only traffic.



Fall view showing the project area. The stone arch bridge is located approximately 200' to the left (or west) of the 17<sup>th</sup> back tee.

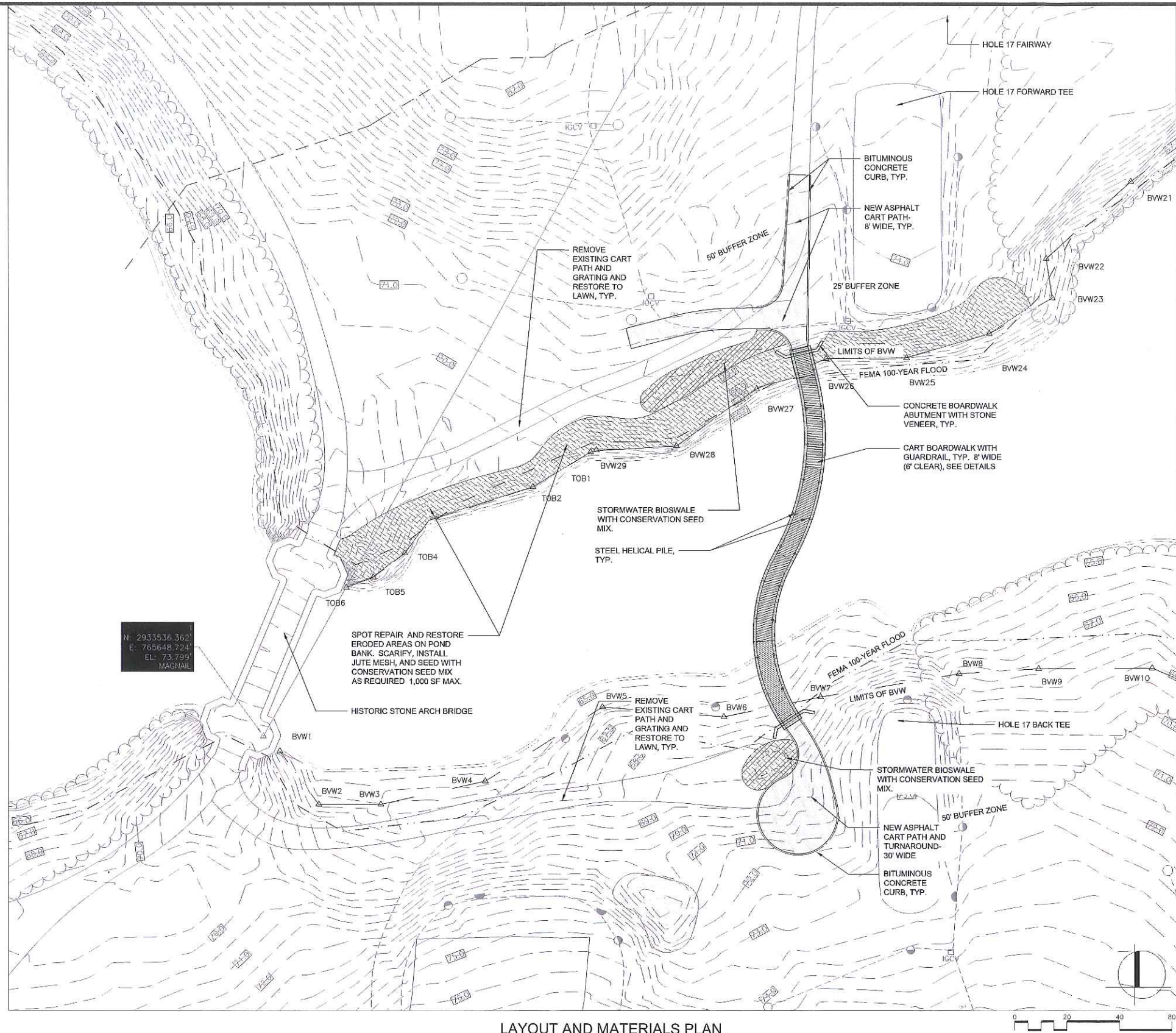
Perspective Renderings



View of the proposed cart boardwalk from historic stone arch bridge.



View of the proposed cart boardwalk from the 17<sup>th</sup> back tee.



LAYOUT AND MATERIALS PLAN



Prepared By:  
**Weston & Sampson**  
 85 Devonshire Street, 3rd Floor  
 Boston, MA 02109  
 (617) 412-4480 1 (800) Sampson  
 www.westonandsampson.com

Consultant  
 Project No. 2160078

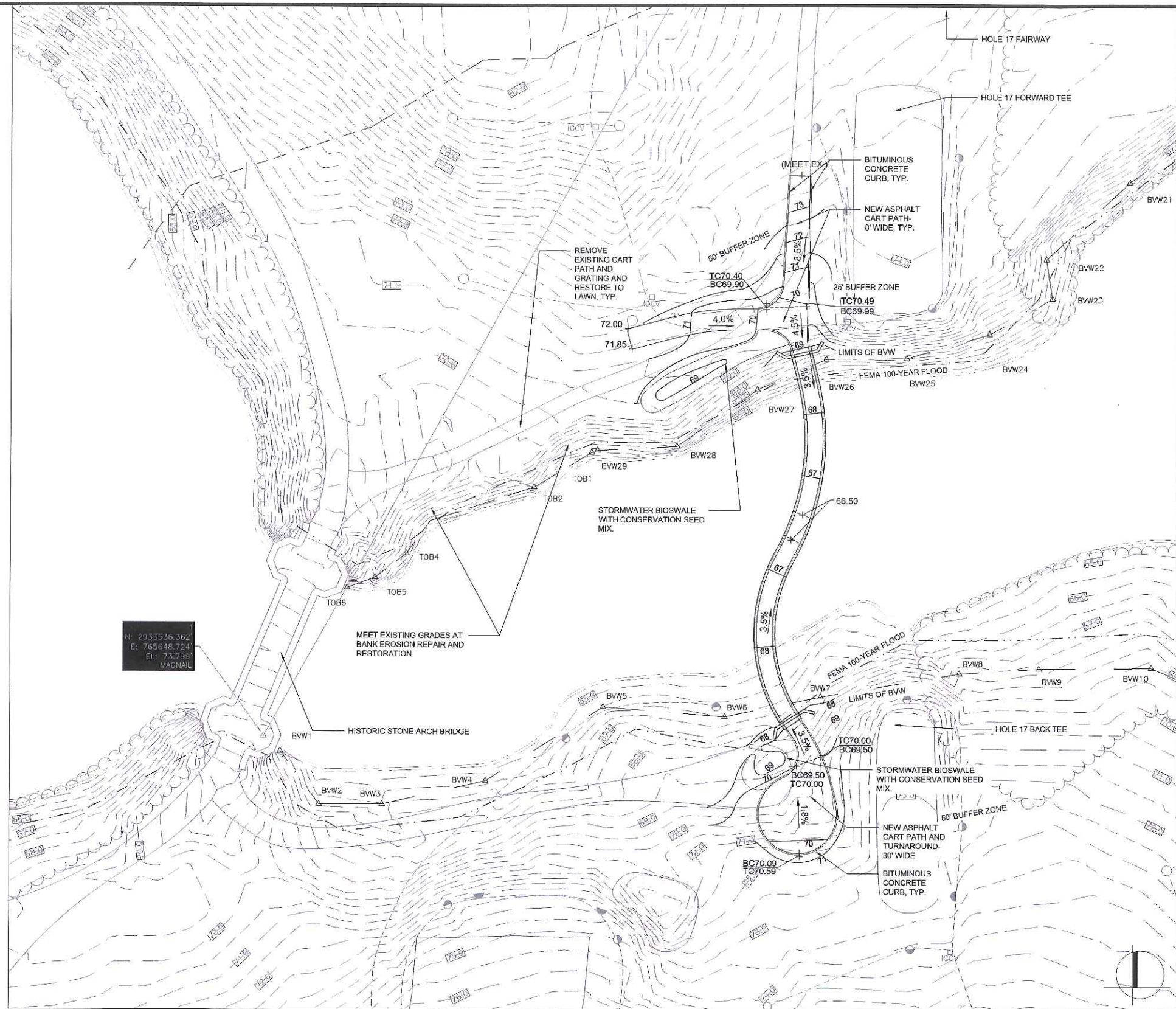
No.	Date	Revision
1	10.24.17	LANDMARKS COMMISSION SUBMISSION

Project Name:  
**William J. Devine Golf Course Cart Boardwalk at Scarborough Pond**

BPRD Project No.	
Date	10/24/2017
Scale	AS SHOWN
Drawn	BR/NS
Checked	ERB

Sheet Name:  
**LAYOUT AND MATERIALS PLAN**

Sheet No.:  
**L1**



GRADING AND DRAINAGE PLAN



Prepared By:  
**Weston & Sampson**  
 85 Devonshire Street, 3rd Floor  
 Boston, MA 02109  
 (617) 412-4480 1 (800) Sampson  
 www.westonandsampson.com

Consultant Project No. 2160078

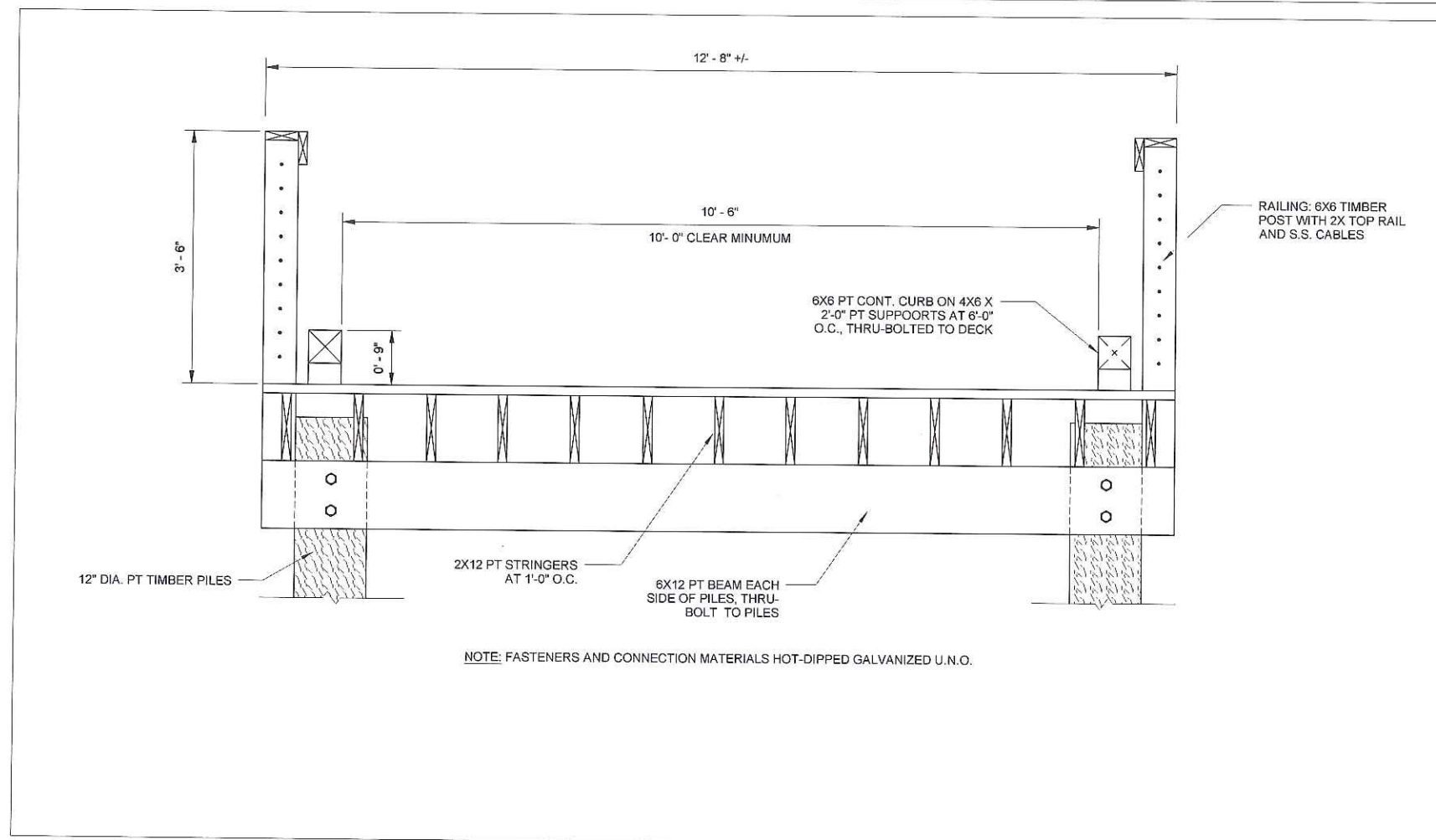
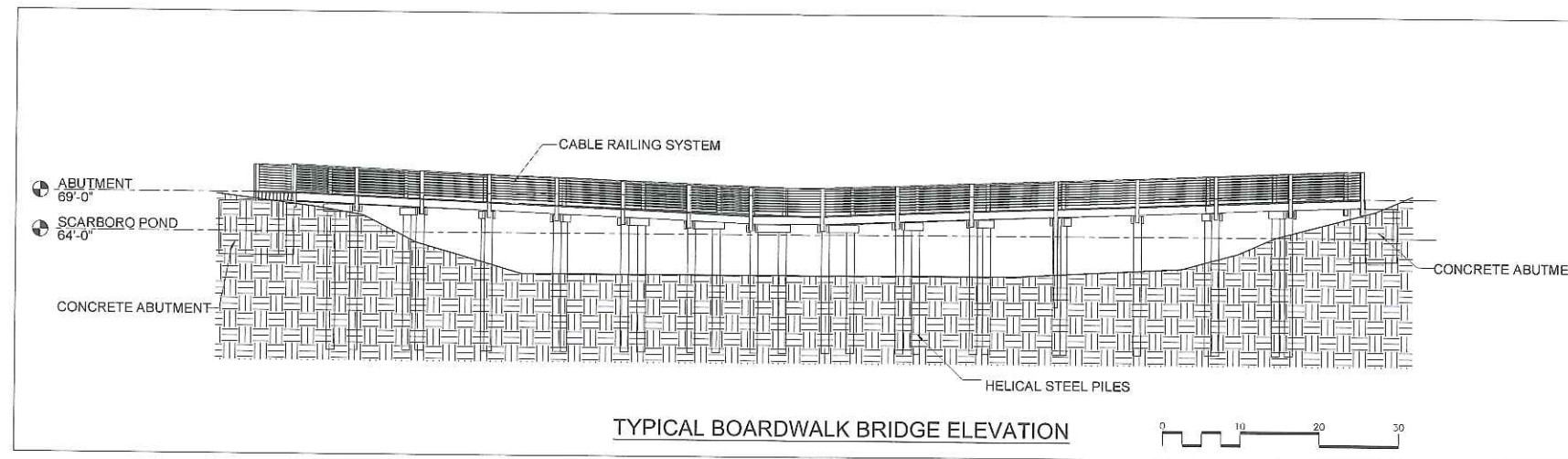
No.	Date	Revision
1	10.24.17	LANDMARKS COMMISSION SUBMISSION

Project Name:  
**William J. Devine Golf Course Cart Boardwalk at Scarborough Pond**

BPRD Project No.	
Date	10/24/2017
Scale	AS SHOWN
Drawn	BR/NS
Checked	ERB

Sheet Name:  
**GRADING AND DRAINAGE PLAN**

Sheet No.:  
**L2**



NOTE: FASTENERS AND CONNECTION MATERIALS HOT-DIPPED GALVANIZED U.N.O.



Prepared By:  
**Weston & Sampson**  
 85 Devonshire Street, 3rd Floor  
 Boston, MA 02109  
 (617) 412-4480 | (800) Sampson  
 www.westonandsampson.com

Consultant Project No. 2160078

No.	Date	Revision
1	10.24.17	LANDMARKS COMMISSION SUBMISSION

Project Name:  
**William J. Devine Golf Course Cart Boardwalk at Scarborough Pond**

BPRD Project No.	Date
	10/24/2017
Scale	AS SHOWN
Drawn	BR/NS
Checked	ERB

Sheet Name:  
**CART BOARDWALK DETAILS**

Sheet No.:  
**L3**