



GE INNOVATION POINT

Fort Point Channel Landmark District Review

October 12, 2017

Gensler

DESIGN UPDATES **TABLE OF CONTENTS**

- 1.** NECCO CT BRIDGE WEST FACADE DESIGN UPDATE
- 2.** NECCO CT BRIDGE EAST FACADE PANEL MOCK UP
- 3.** ETCHED WINDOWS
- 4.** LEVEL 06 DESIGN UPDATES
- 5.** SIGNAGE UPDATE
- 6.** FACADE LIGHTING UPDATES
- 7.** OUTDOOR FURNITURE/ LANDSCAPE UPDATES



NECCO CT BRIDGE WEST FACADE DESIGN UPDATE



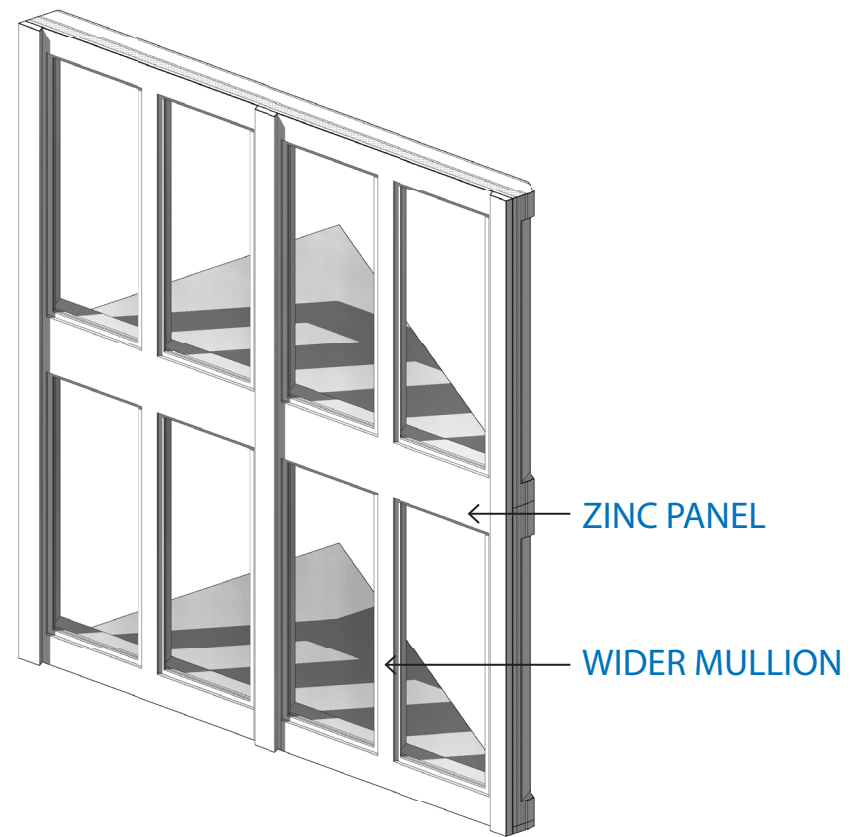
NECCO CT BRIDGE WEST FACADE - DESIGN AS PRESENTED ON 2017.07.13



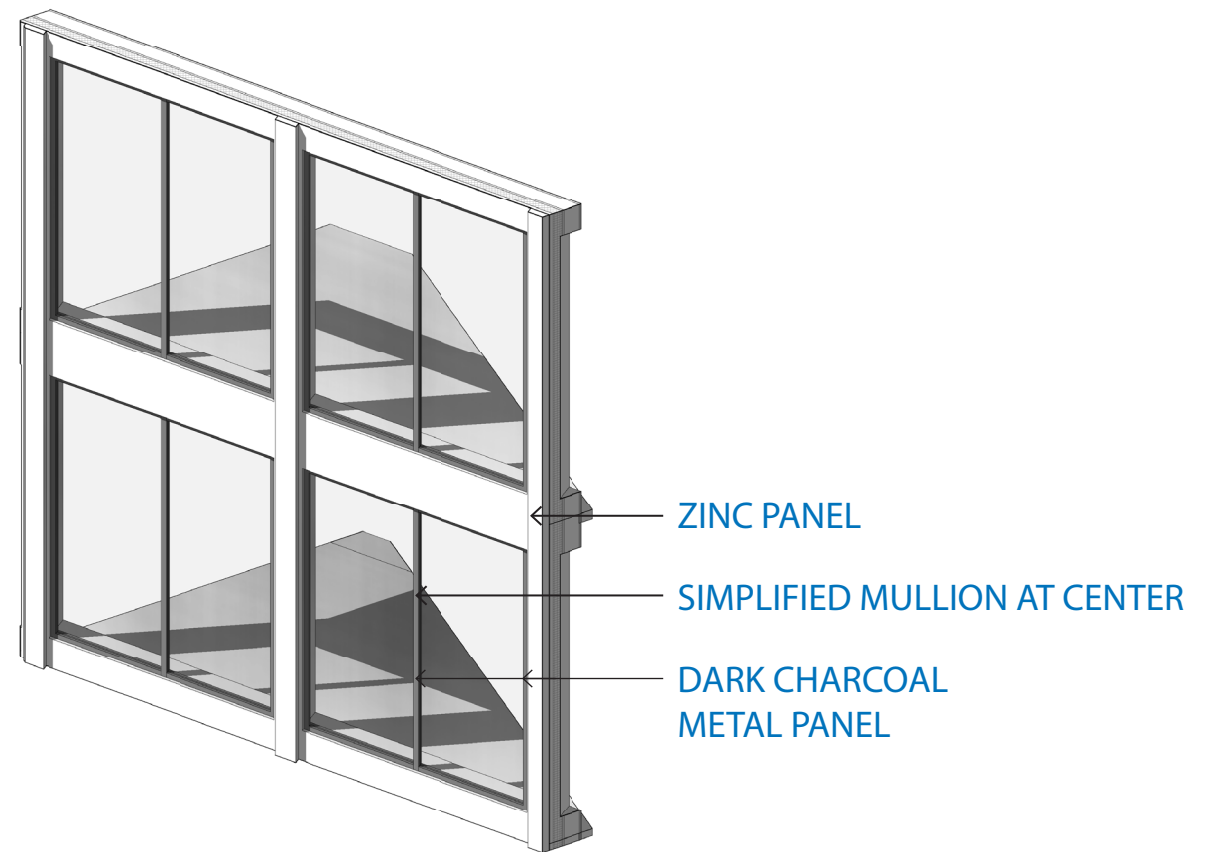
NECCO CT BRIDGE WEST FACADE - CURRENT DESIGN



NECCO CT BRIDGE WEST FACADE - AXON OF WINDOWS



AS PRESENTED ON 2017.07.13



CURRENT DESIGN

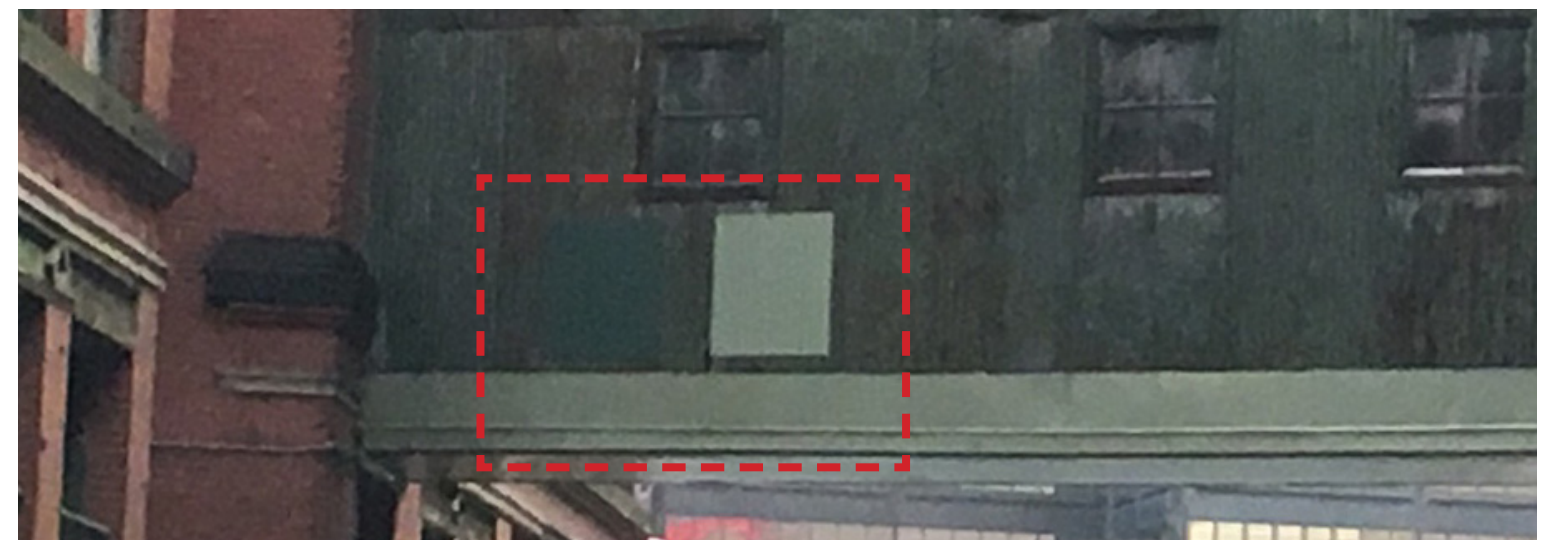
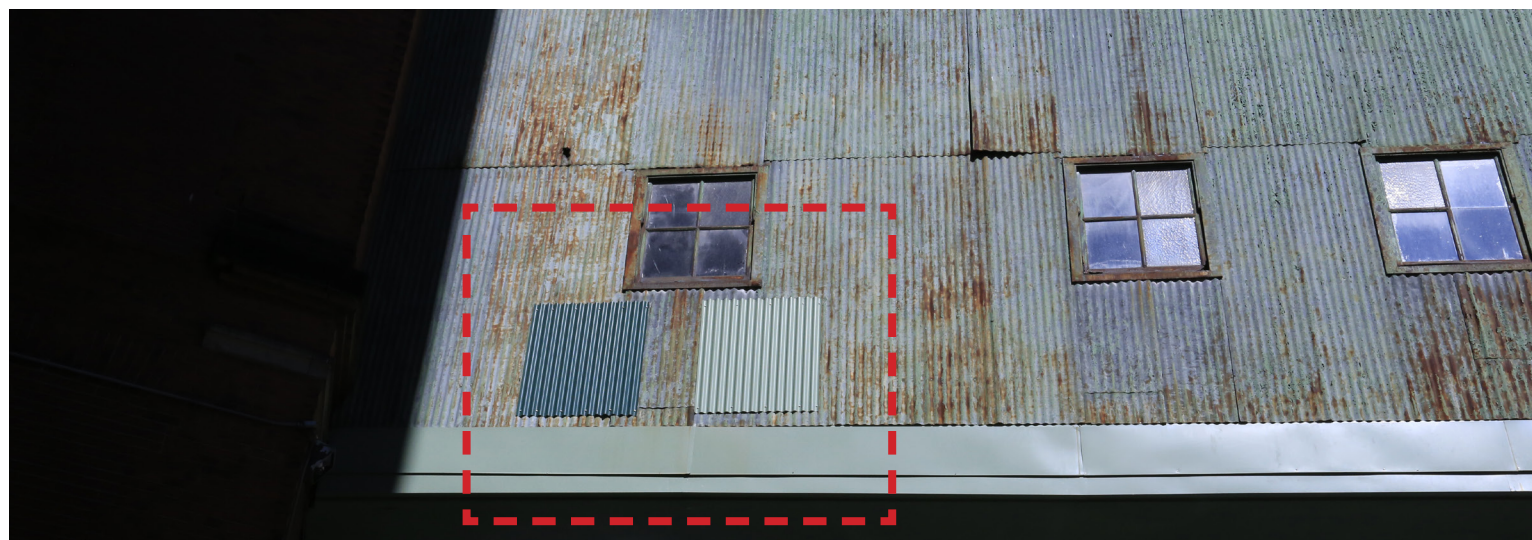
NECCO CT BRIDGE EAST FACADE UPDATE



NECCO COURT BRIDGE **VIEW FROM NECCO STREET** AS APPROVED



NECCO COURT BRIDGE PANEL MOCK UP



The Fort Point Channel Landmark District

Boston Landmarks Commission Study Report

I. Overhead Walkways/Bridges

1. Contributing overhead walkways and bridges are a character defining feature of the district. All overhead walkways and bridges shall be preserved and repaired to the greatest extent possible using recognized preservation methods, rather than replaced.
2. When contributing elements or features (functional and decorative) of overhead walkways or bridges cannot be preserved, repaired, or are missing they should be replaced with elements or features which match the original in material, color, texture, size, shape, profile and detail of installation.
3. If using the same material is not technically or economically feasible, then compatible substitute materials may be considered.



Petition #201, Bost



ETCHED WINDOWS



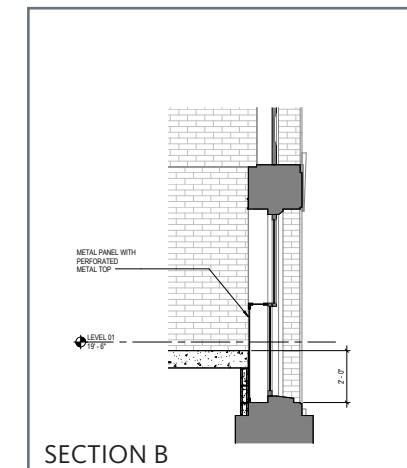
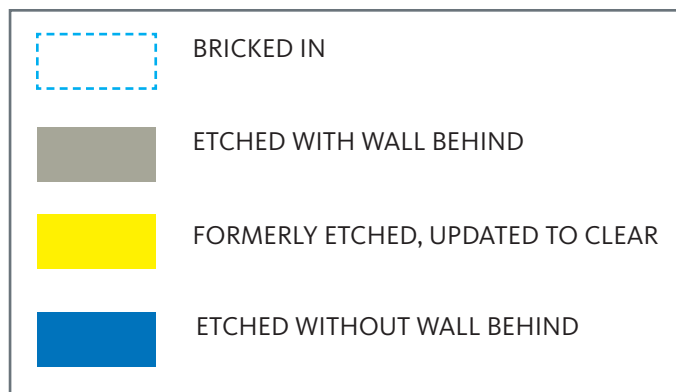
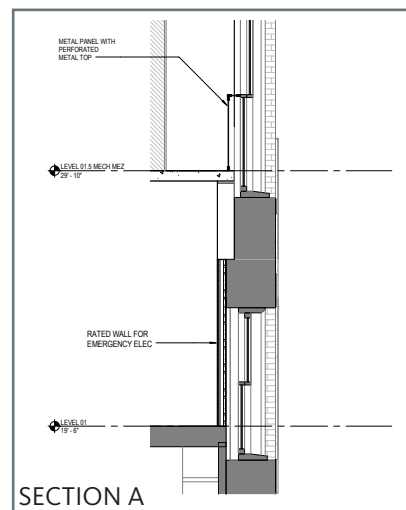
ETCHED WINDOWS - NORTH ELEVATION



AS APPROVED ON 2016.10.05



PROPOSED



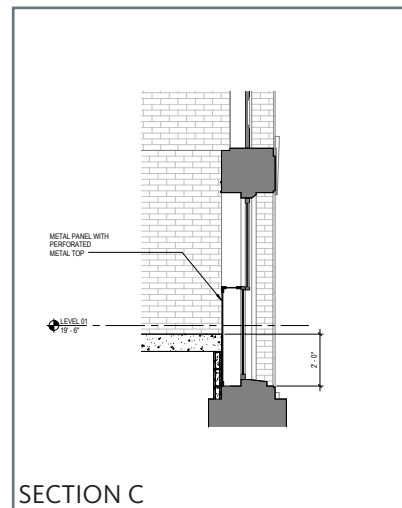
ETCHED WINDOWS - EAST ELEVATION



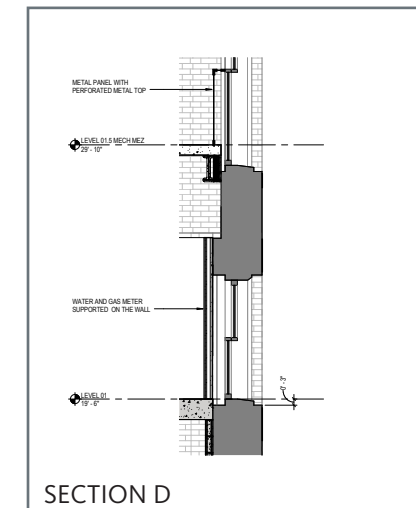
AS APPROVED ON 2016.10.05



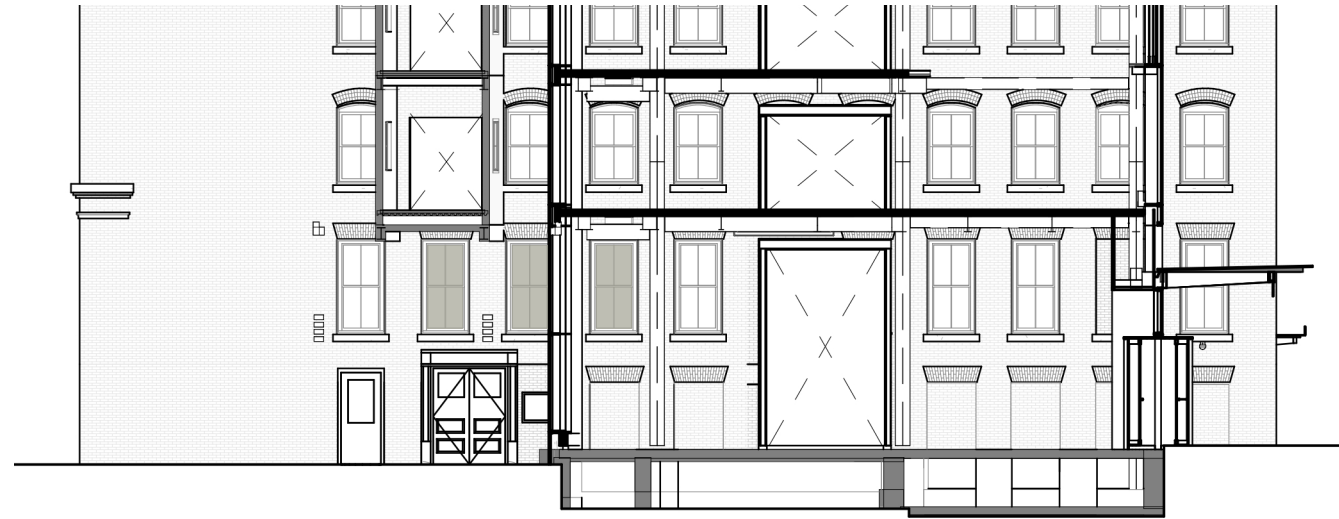
PROPOSED



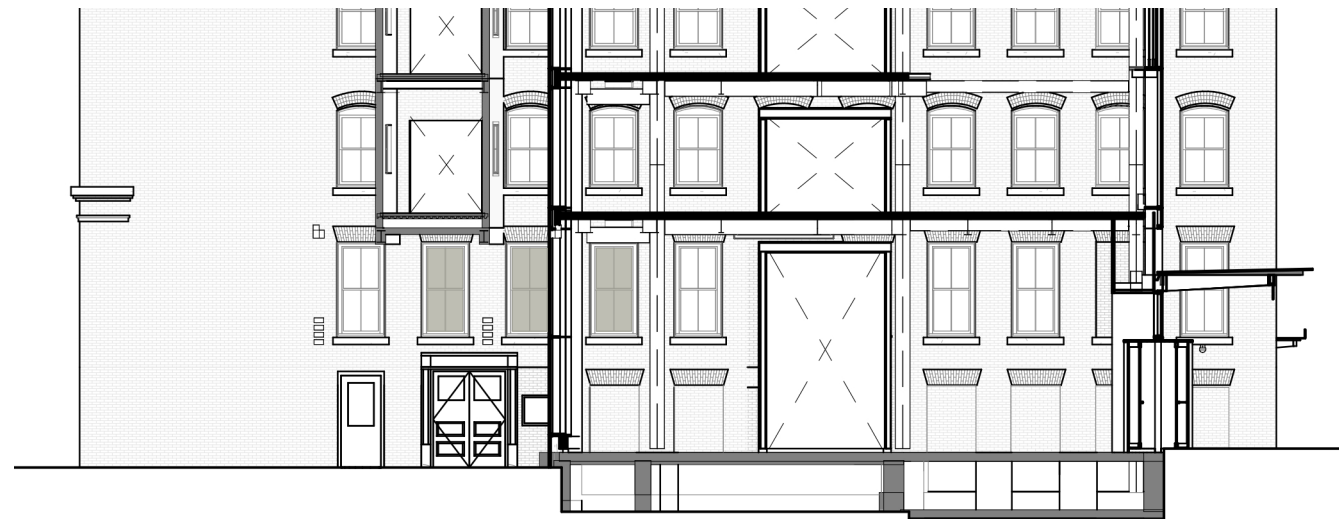
	BRICKED IN
	ETCHED WITH WALL BEHIND
	FORMERLY ETCHED, UPDATED TO CLEAR
	ETCHED WITHOUT WALL BEHIND







ETCHED WINDOWS - GLASS ENCLOSURE EAST ELEVATION



AS APPROVED ON 2016.10.05



PROPOSED

	BRICKED IN
	ETCHED WITH WALL BEHIND
	FORMERLY ETCHED, UPDATED TO CLEAR
	ETCHED WITHOUT WALL BEHIND





ETCHED WINDOWS - GLASS ENCLOSURE WEST ELEVATION



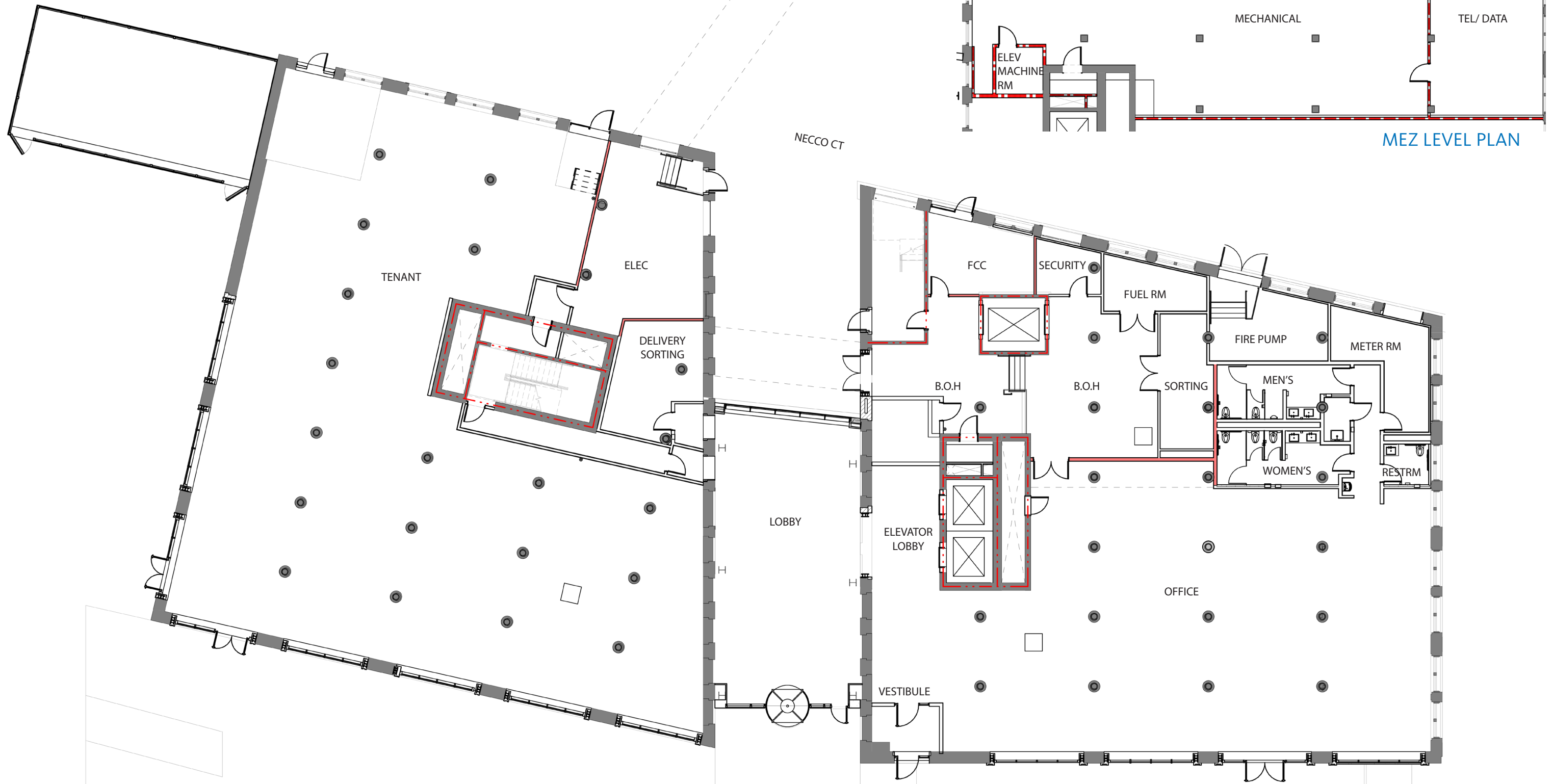
AS APPROVED ON 2016.10.05



PROPOSED

	BRICKED IN
	ETCHED WITH WALL BEHIND
	FORMERLY ETCHED, UPDATED TO CLEAR
	ETCHED WITHOUT WALL BEHIND

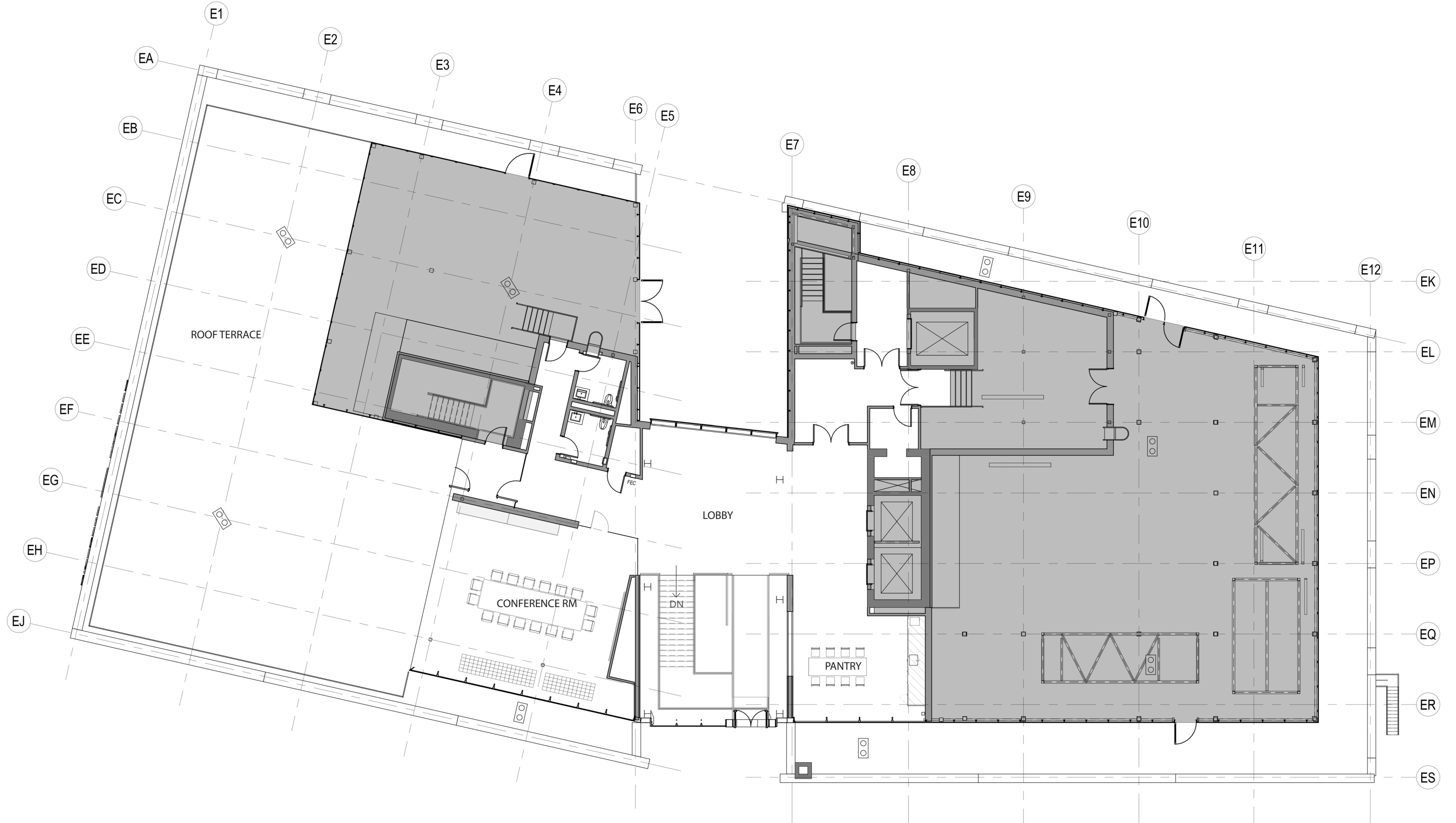
ETCHED WINDOWS - LEVEL 01 PLAN



LEVEL 06 DESIGN UPDATES



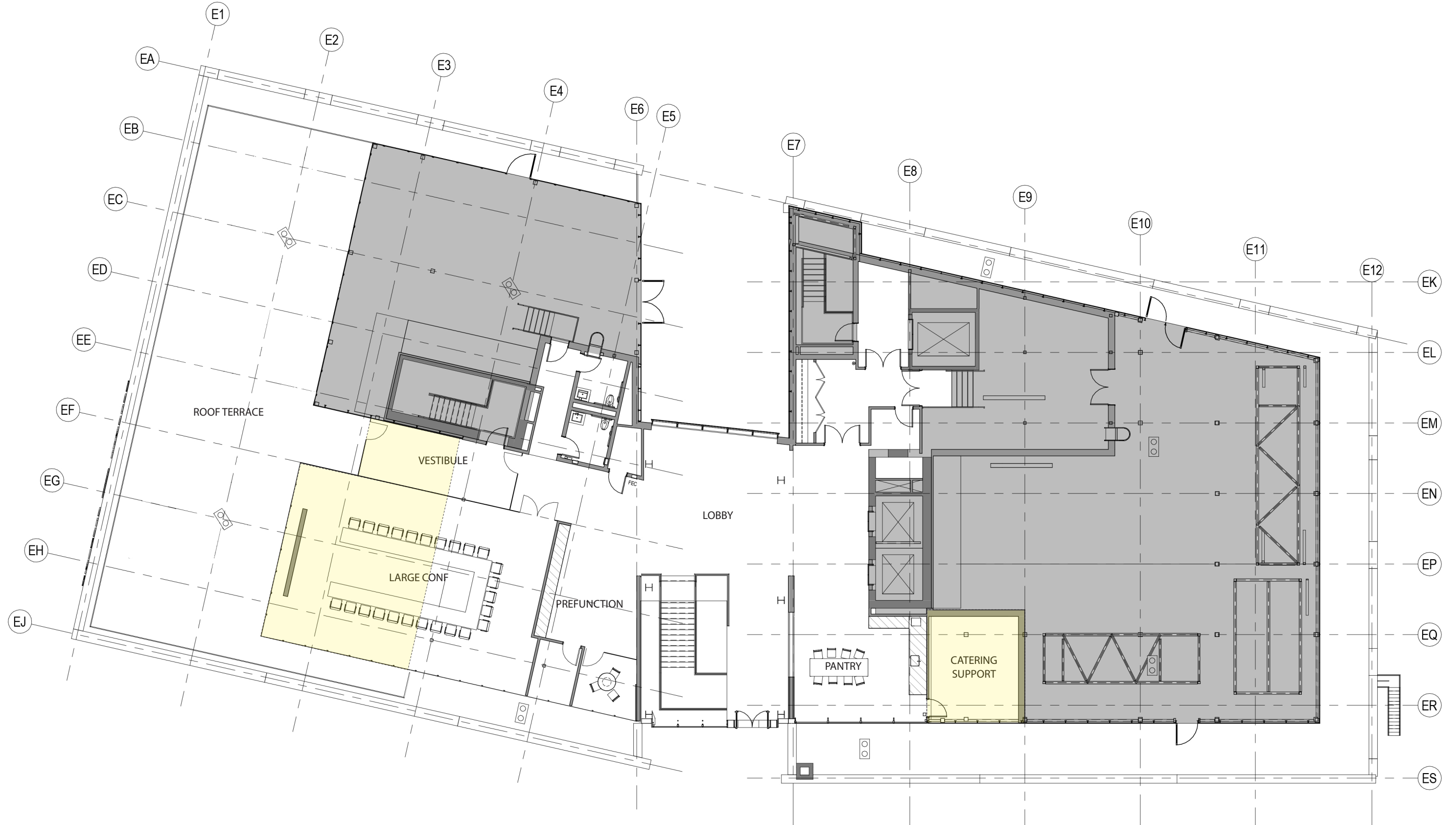
LEVEL 06 PLAN - AS APPROVED ON 2016.10.05



VIEW FROM SUMMER ST - AS APPROVED ON 2016.10.05



PROPOSED LEVEL 06 PLAN - CURRENT WITH EXPANDED CONFERENCE ROOM AND STORAGE



VIEW FROM SUMMER ST - PROPOSED



LEVEL 06 UPDATES - VIEW FROM SUMMER ST

EXISTING APPROVED



PROPOSED



LEVEL 06 UPDATES - VIEW FROM HARBOR WALK

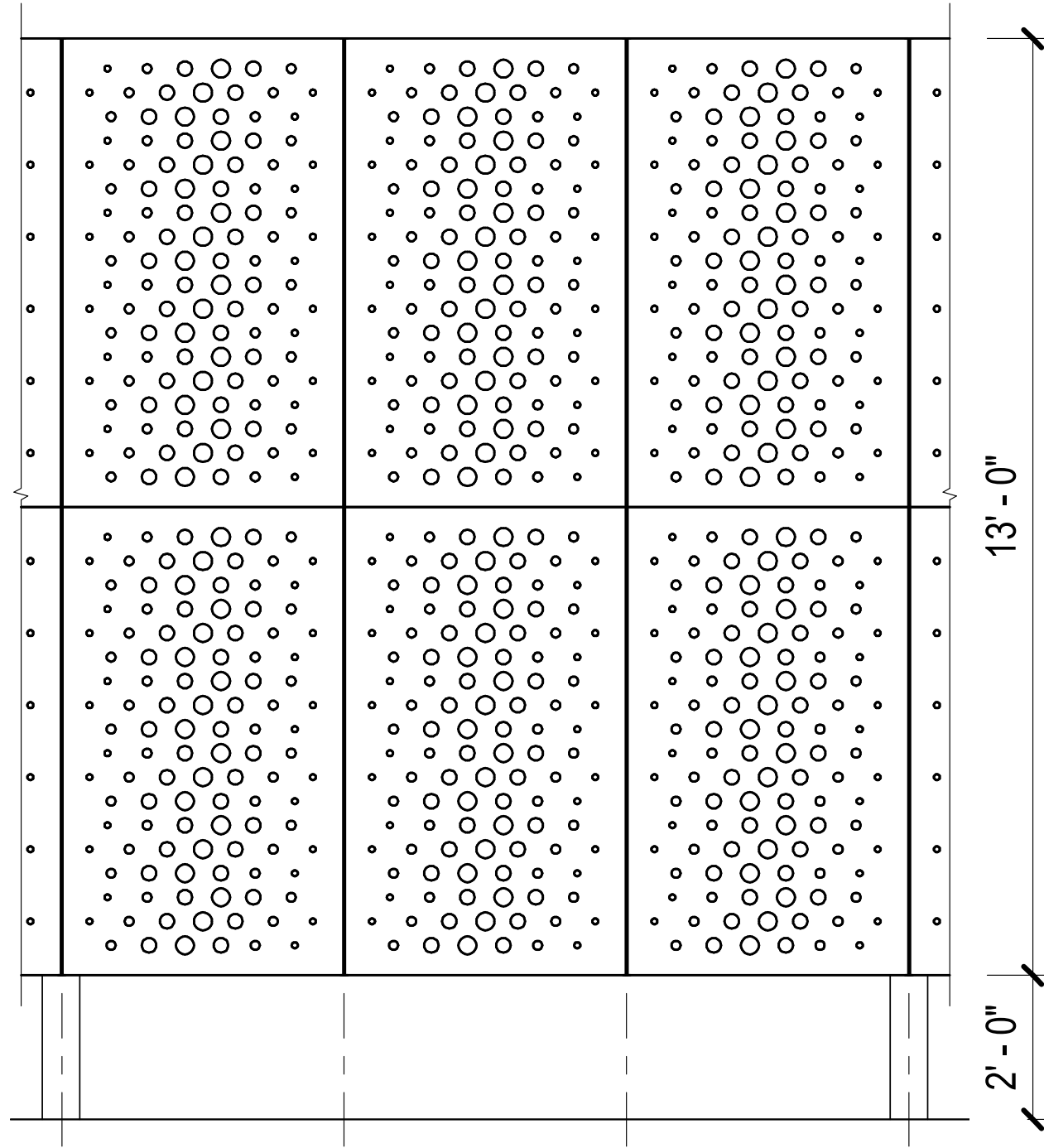
EXISTING APPROVED



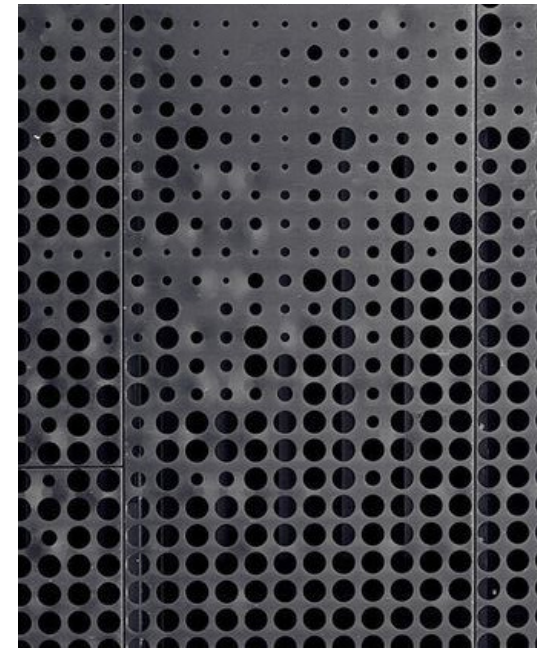
PROPOSED



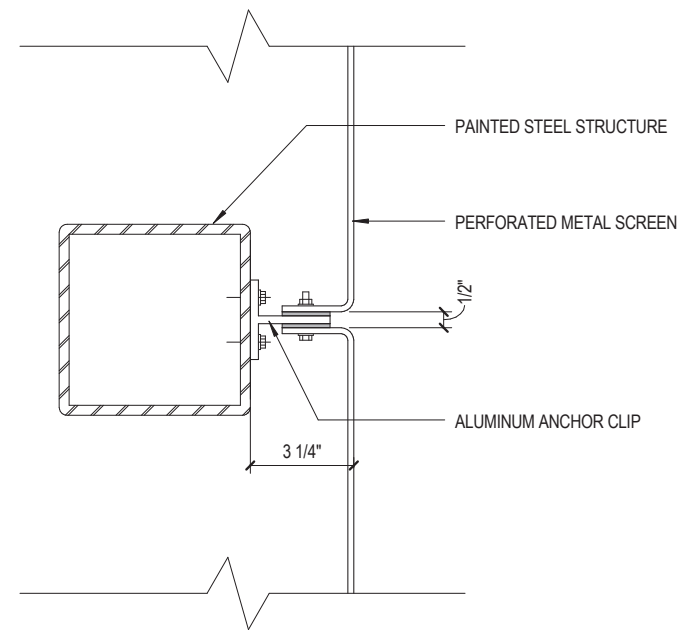
ROOF TOP CLADDING - MECHANICAL SCREEN AS APPROVED



PERFORATED SCREEN ELEVATION



REFERENCE IMAGE

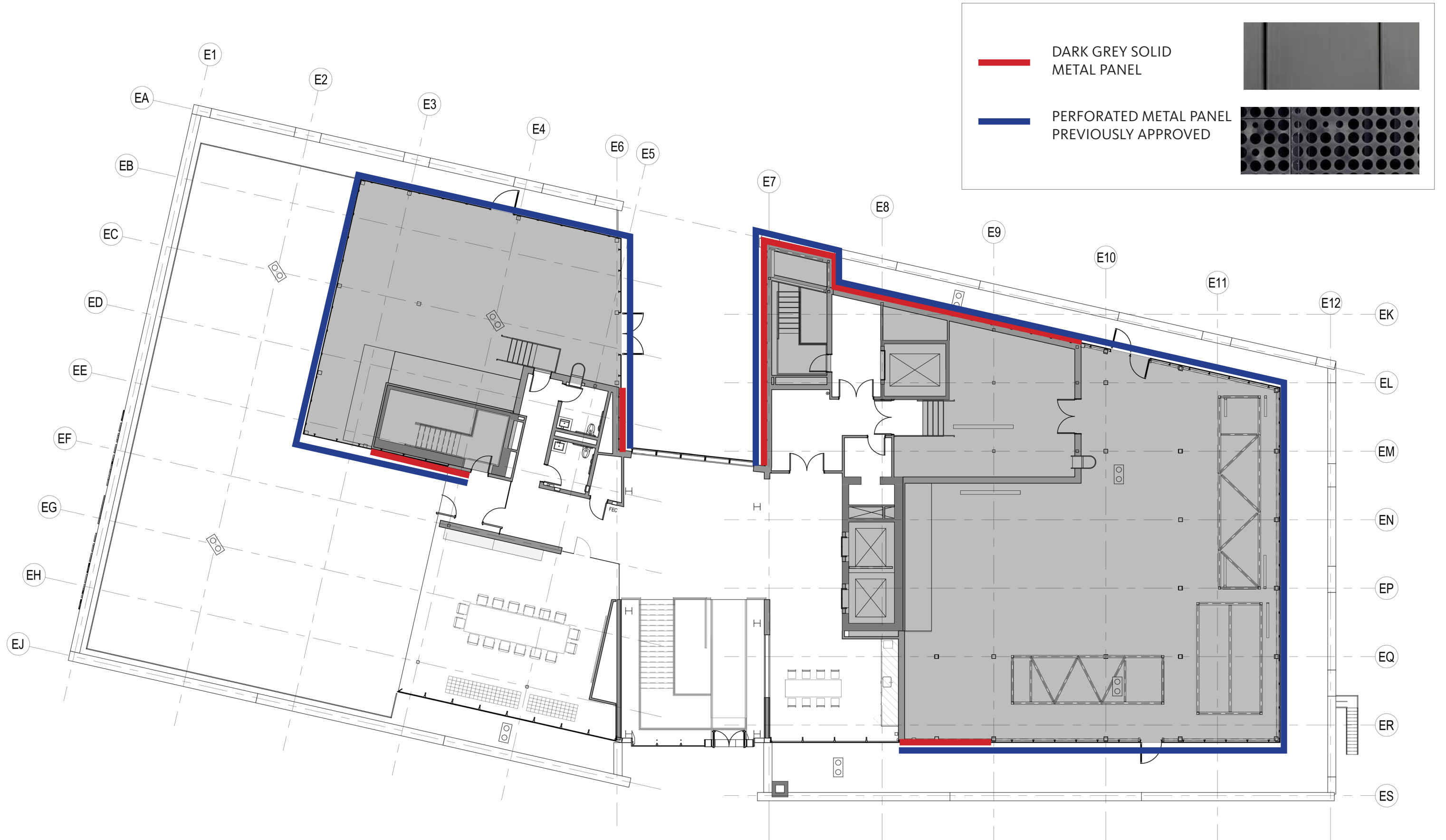


ATTACHMENT DETAIL

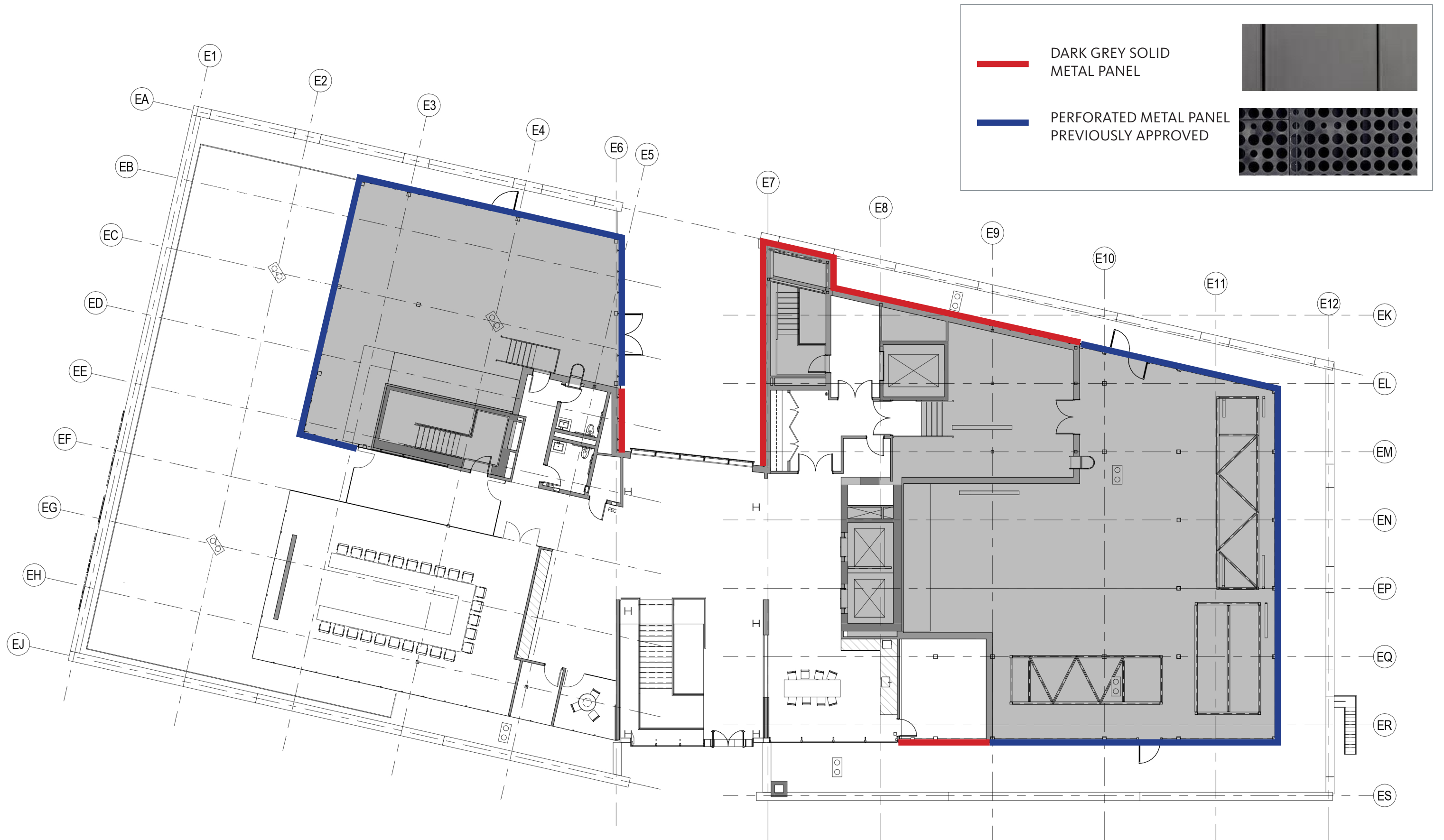


SOLID METAL PANEL REFERENCE IMAGE

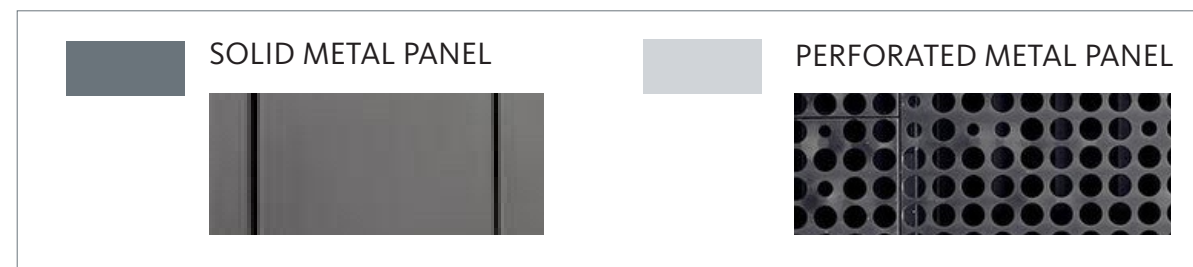
ROOF TOP CLADDING - MECHANICAL SCREEN AS APPROVED



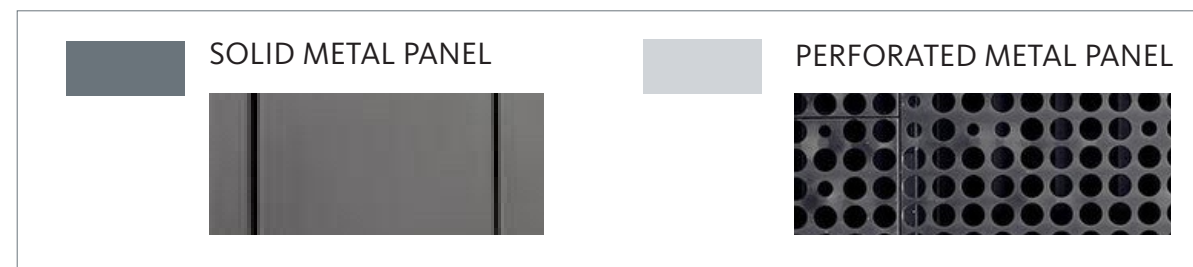
ROOF TOP CLADDING - MECHANICAL SCREEN PROPOSED



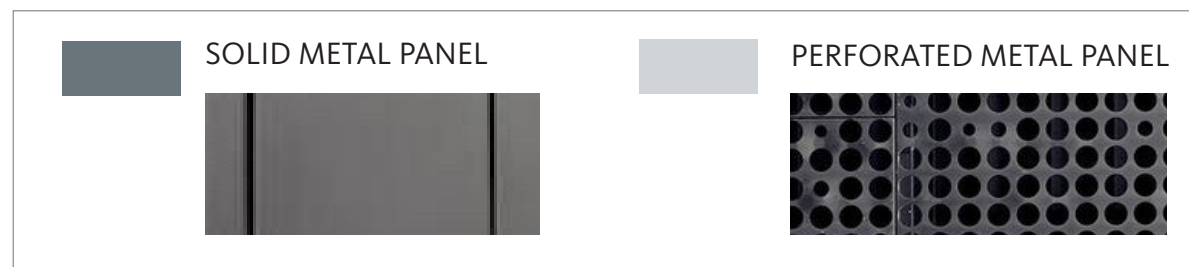
ROOF TOP CLADDING - NORTH ELEVATION



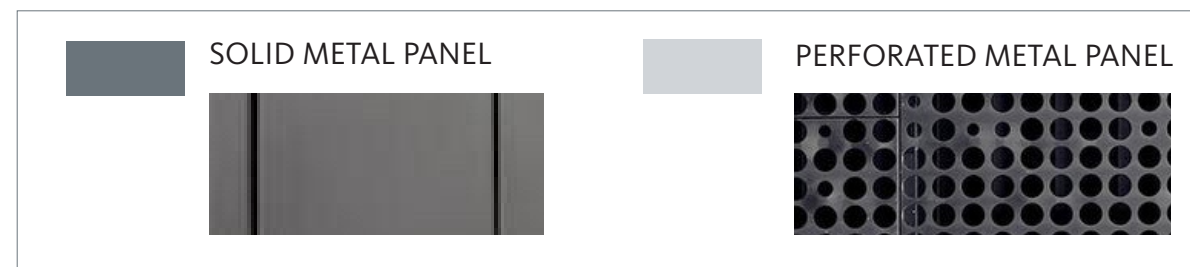
ROOF TOP CLADDING - SOUTH ELEVATION



ROOF TOP CLADDING -GLASS ENCLOSURE EAST ELEVATION



ROOF TOP CLADDING -GLASS ENCLOSURE WEST ELEVATION

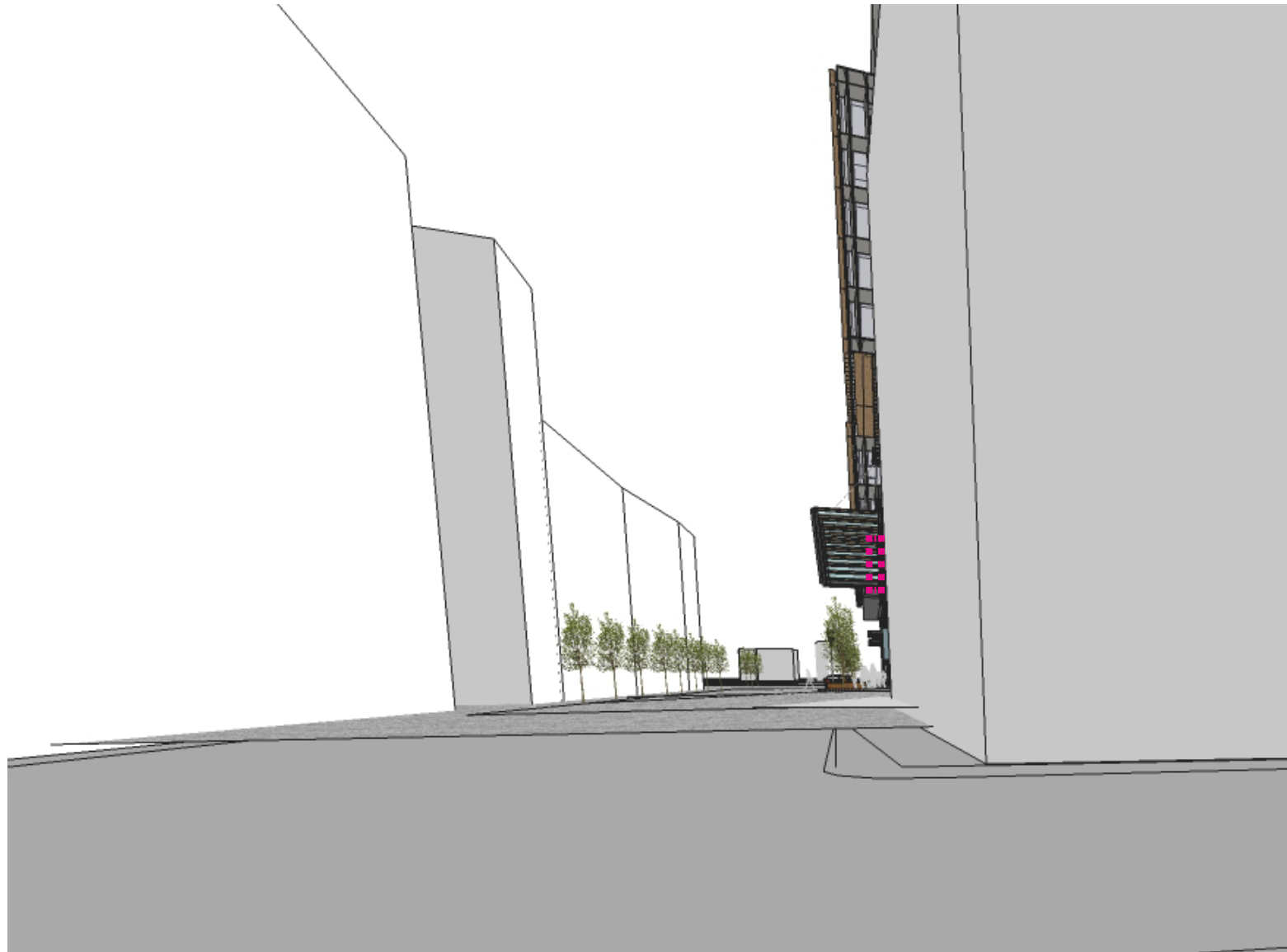


SIGNAGE UPDATES



SIGNAGE UPDATES - G.0 INNOVATION POINT BLADE SIGN

--- SIGN LOCATION

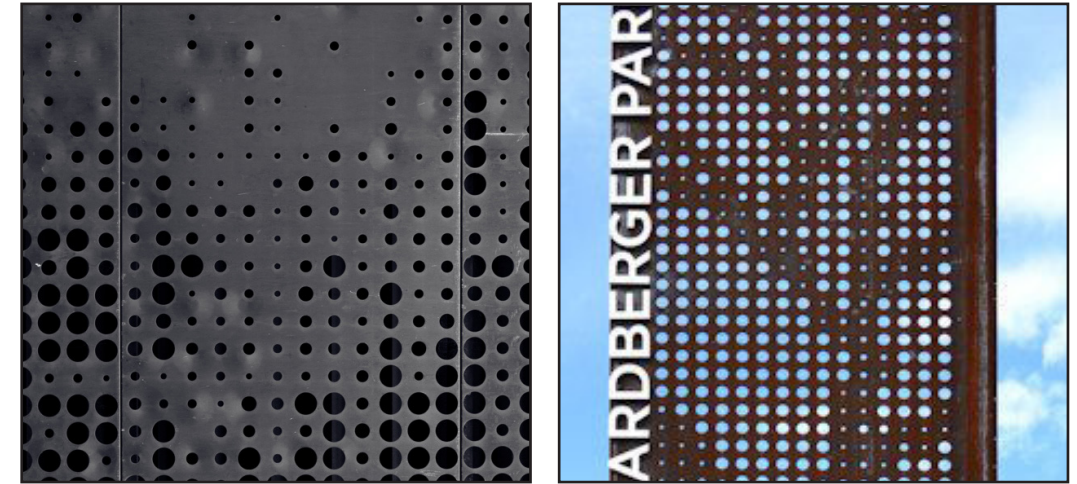
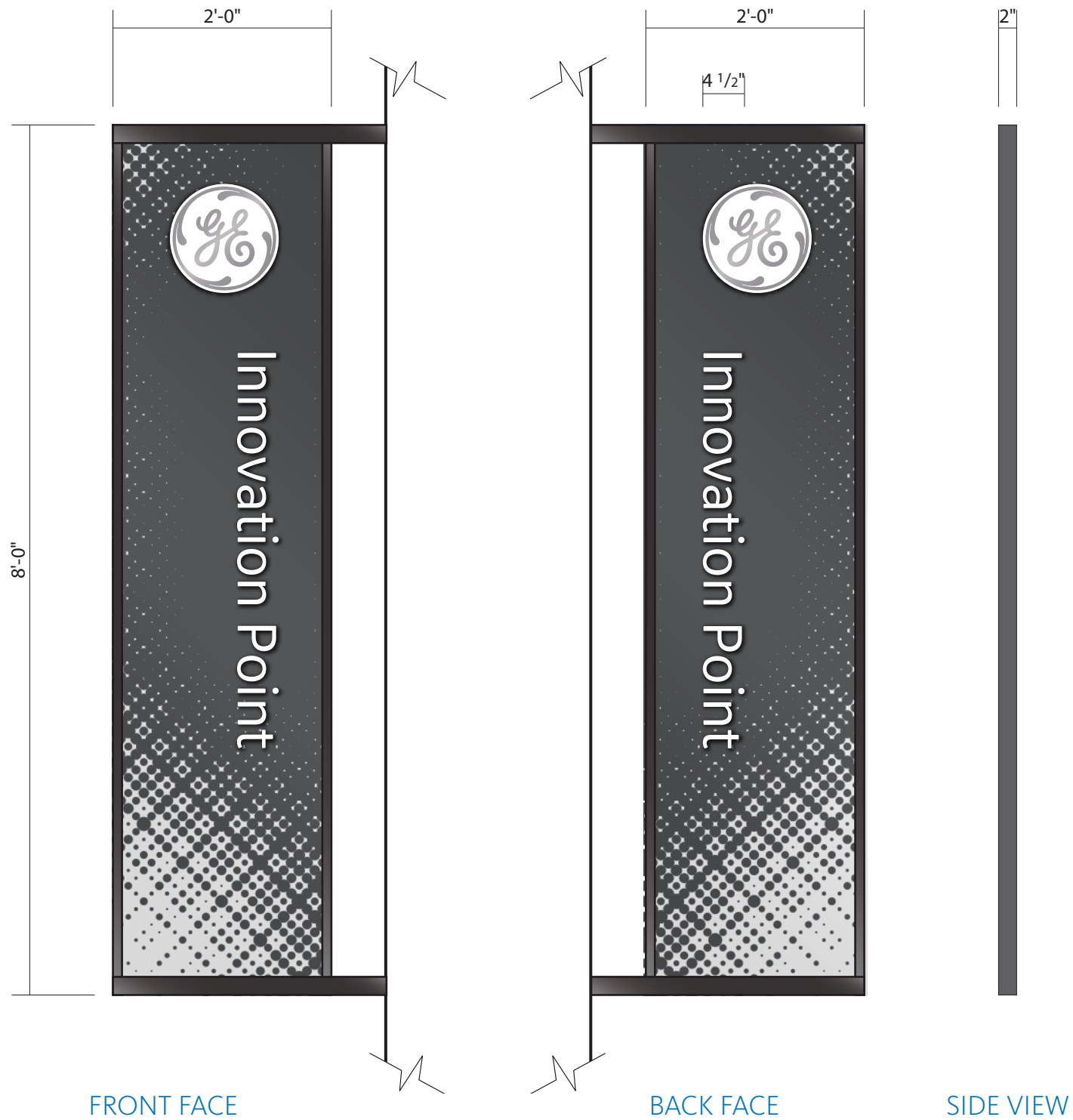


MELCHER ST. TURNING RIGHT ON NECCO ST.

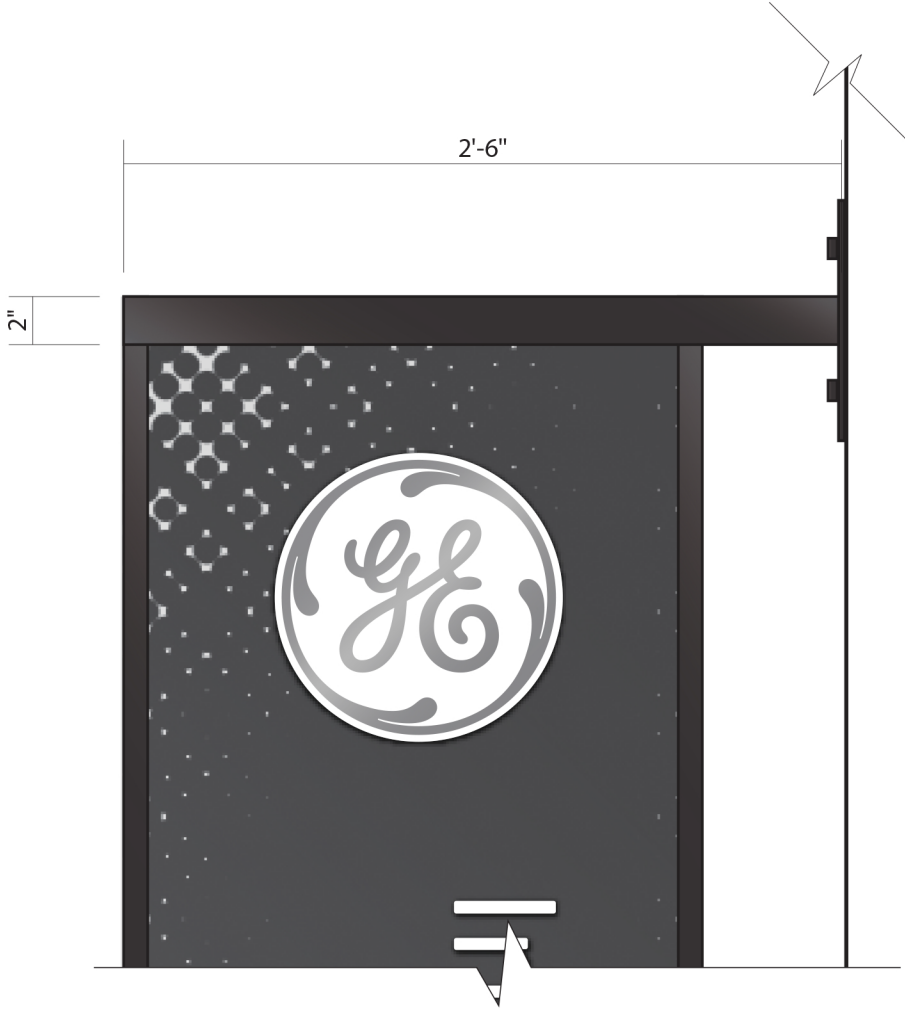


NECCO ST. AND NECCO CT.

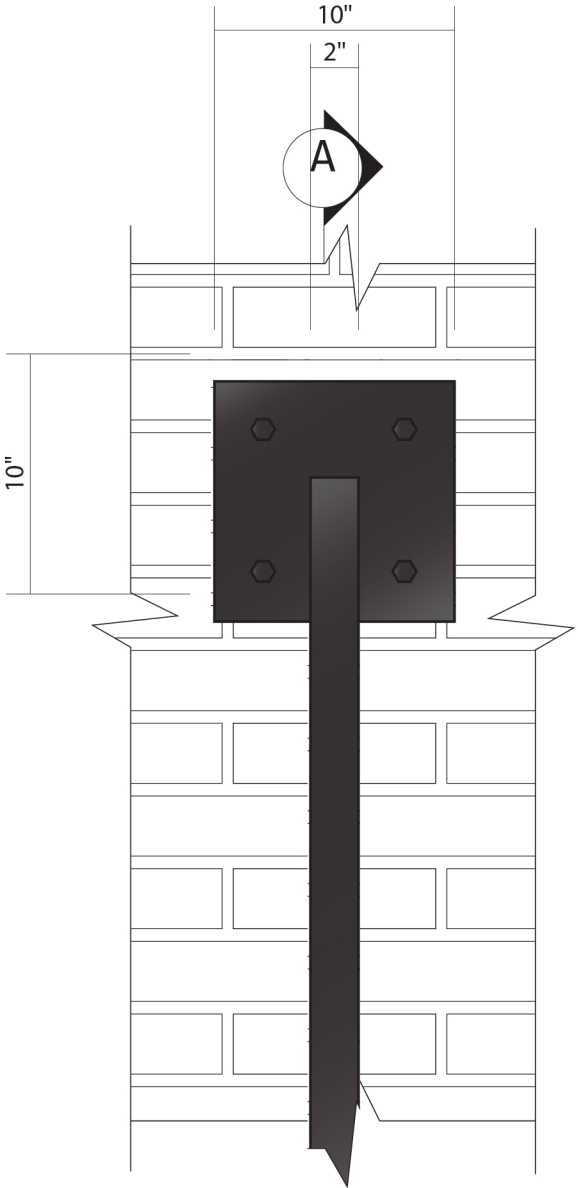
SIGNAGE UPDATES - G.0 INNOVATION POINT BLADE SIGN



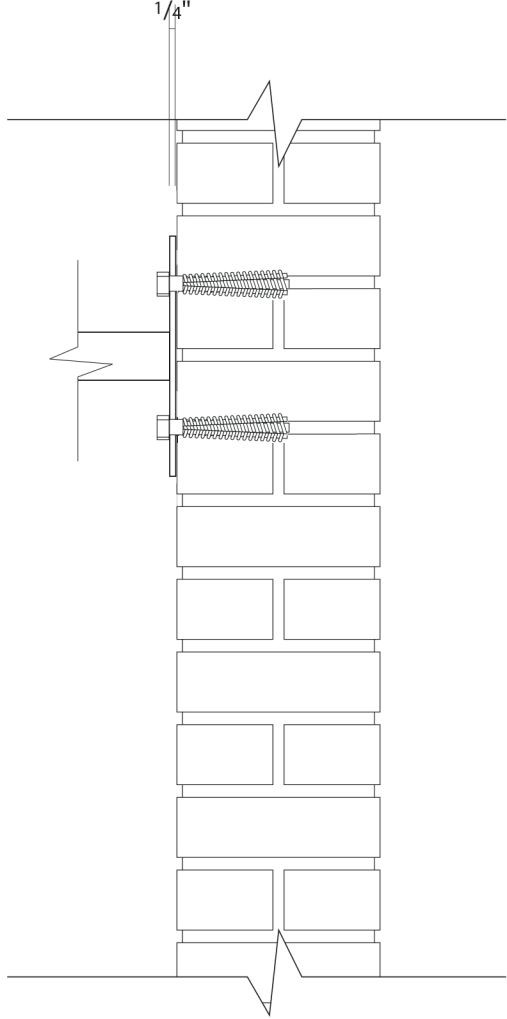
SIGNAGE UPDATES - G.0 INNOVATION POINT BLADE SIGN DETAILS



FRONT FACE



SIDE VIEW



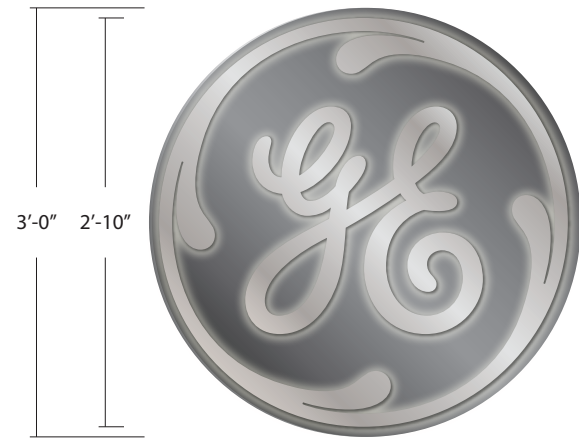
ATTACHMENT DETAIL

SIGNAGE UPDATES - H.0 INNOVATION POINT ENTRANCE ON NECCO ST

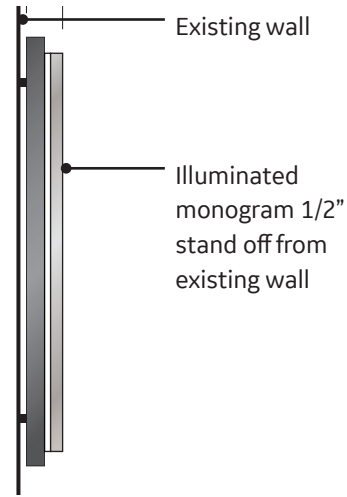
--- SIGN LOCATION



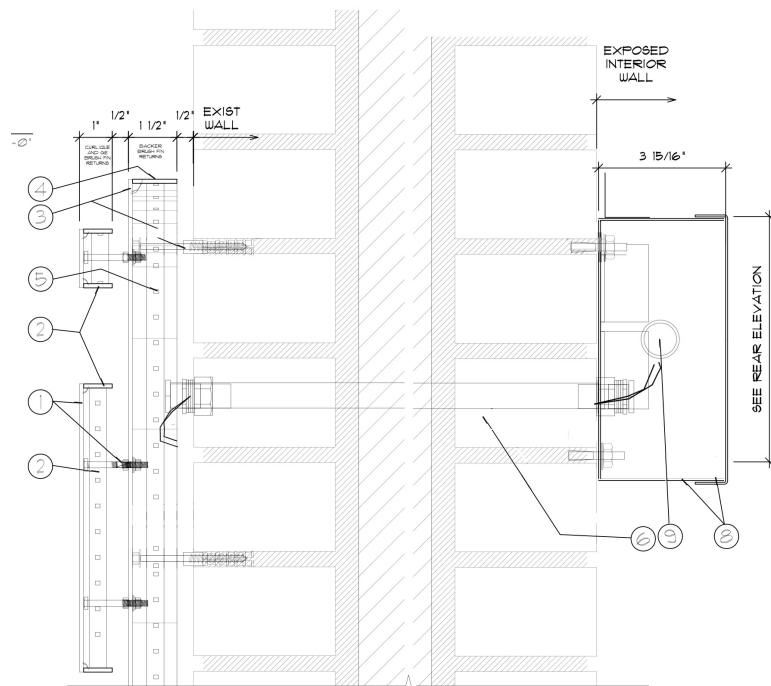
SIGNAGE UPDATES - H.O PLAZA ENTRANCE ID



FRONT FACE



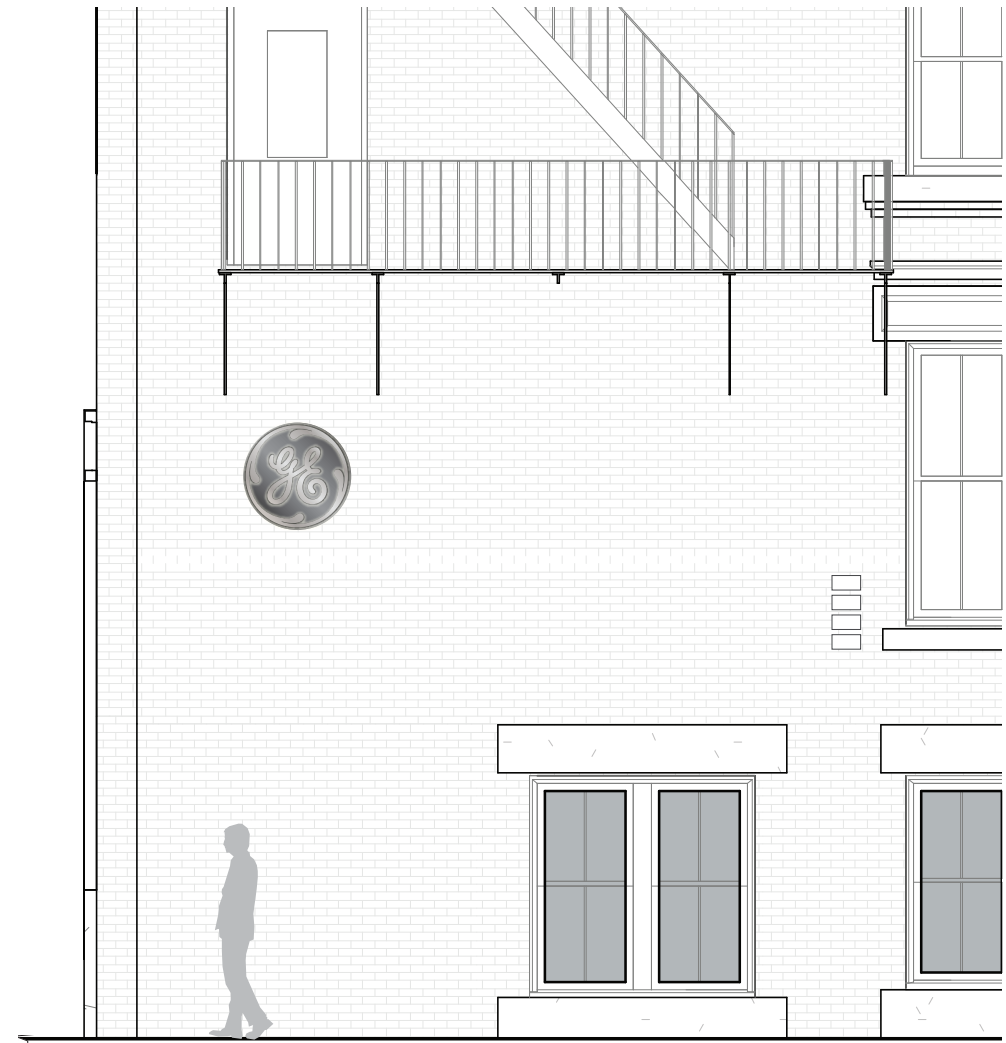
SIDE VIEW



ATTACHMENT DETAILS

NOTES : 9/8 ILLUMINATED MONOGRAM

1. CURLICUES AND 'GE' SCRIPT FACES TO BE 12 GAUGE STAINLESS STEEL. HYDRO-JET CUT USING ARTWORK PROVIDED BY DESIGNER. WELD TO RETURNS. SURFACE FINISH TO BE BRIGHT POLISH. WELD STAINLESS STEEL THREADED ROD SECOND SURFACE TO FACE FOR ATTACHMENT TO MONOGRAM BACKING SHEET.
2. CURLICUE AND 'GE' SCRIPT RETURNS TO BE 16 GAUGE STAINLESS STEEL. HORIZONTAL #4 BRUSHED FINISH. WELD TO FACES.
3. MONOGRAM BACKING SHEET TO BE 12 GAUGE STAINLESS STEEL WITH A #4 HORIZONTAL BRUSH FINISH. HYDRO-JET CUT. WELD STAINLESS STEEL THREADED ROD SECOND SURFACE TO BACKING SHEET TO ALLOW FOR WALL ATTACHMENT. WELD TO RETURNS.
4. MONOGRAM BACKING SHEET RETURNS TO BE 16 GAUGE STAINLESS STEEL. HORIZONTAL #4 BRUSHED FINISH. WELD TO BACKING SHEET.
5. LEDS TO BE GE TETRA TAPE *GETP65-1 WHITE. APPLY TO INTERIOR OF RETURNS TO PROVIDE HALO ILLUMINATION FOR CURLICUE, GE SCRIPT LETTERS AND THE BACKING SHEET. ROUTE ELECTRICAL TO UL APPROVED PASS THROUGH TO INTERIOR J-BOX AND POWER SUPPLIES AND THEN TROUGH RIGID CONDUIT TO PRIMARY POWER ABOVE. LED MANUFACTURER TO PROVIDE LAYOUT AND POWER SUPPLY SPECIFICATIONS AS REQUIRED TO PROVIDE EVEN ILLUMINATION WITHOUT HOT SPOTS OR SHADOWS.
6. UL APPROVED ELECTRICAL PASS THROUGH.
7. PROVIDE GREENFIELD CONNECTORS AS REQUIRED.
8. 1/2" ALUMINUM PAN FORMED ELECTRICAL BOX TO MEET ALL APPLICABLE CODES. PAINT FINISH EXTERIOR BLACK, SEMI-GLOSS FINISH. CONNECT RIGID CONDUIT TO PRIMARY POWER ABOVE.
9. RIGID METAL CONDUIT AS REQUIRED FOR HOME RUN TO PRIMARY ELECTRICAL. NOTE: ROUTE CONDUIT TO CONCEAL AS MUCH AS POSSIBLE. PAINT FINISH CONDUIT AND ALL FITTINGS BLACK, SEMI-GLOSS FINISH.



LOCATION ELEVATION

EXTERIOR LIGHTING UPDATES



EXTERIOR LIGHTING UPDATE - LIGHT FIXTURE MOCK UP

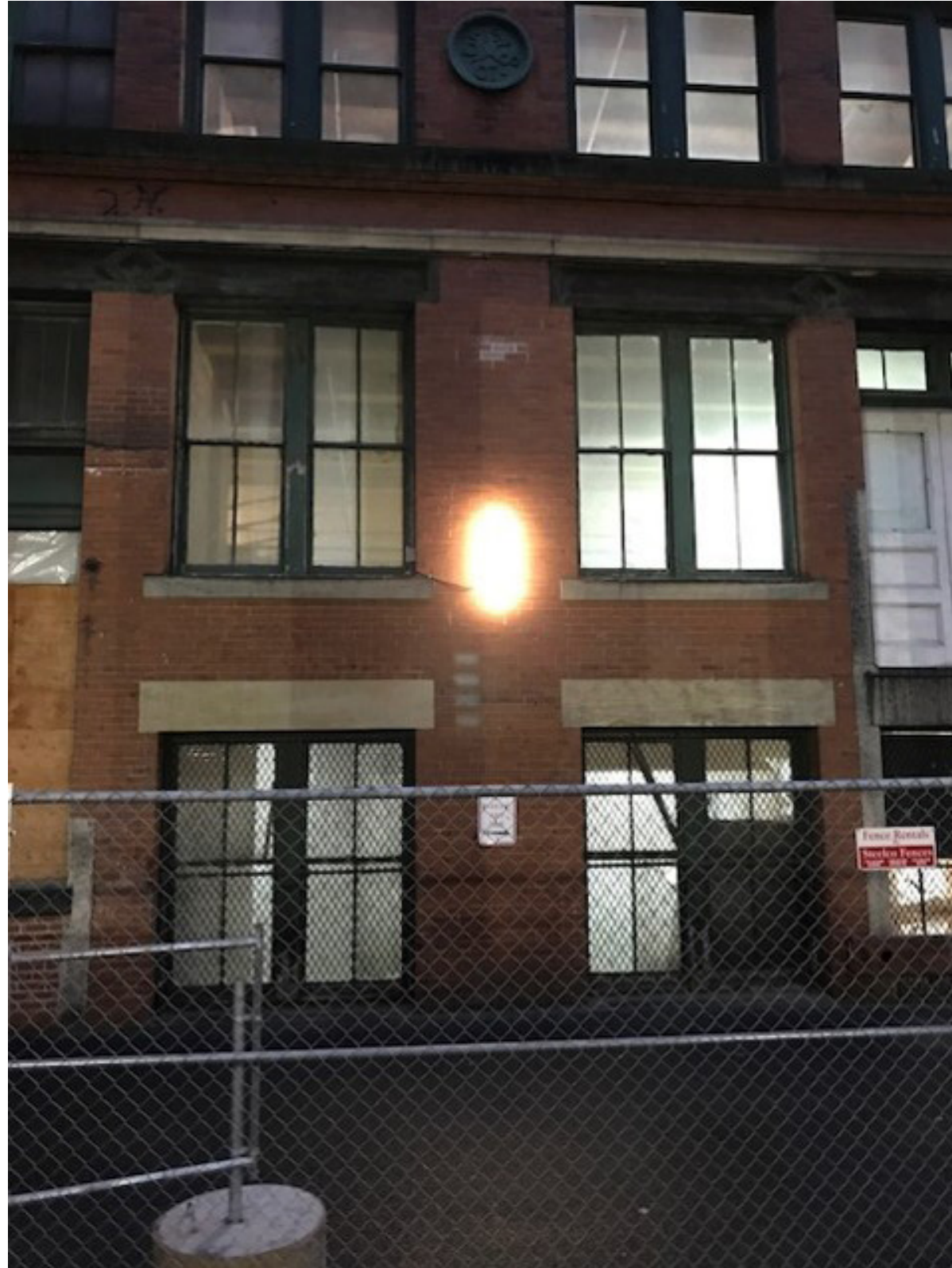


DAY TIME LIGHTS ON

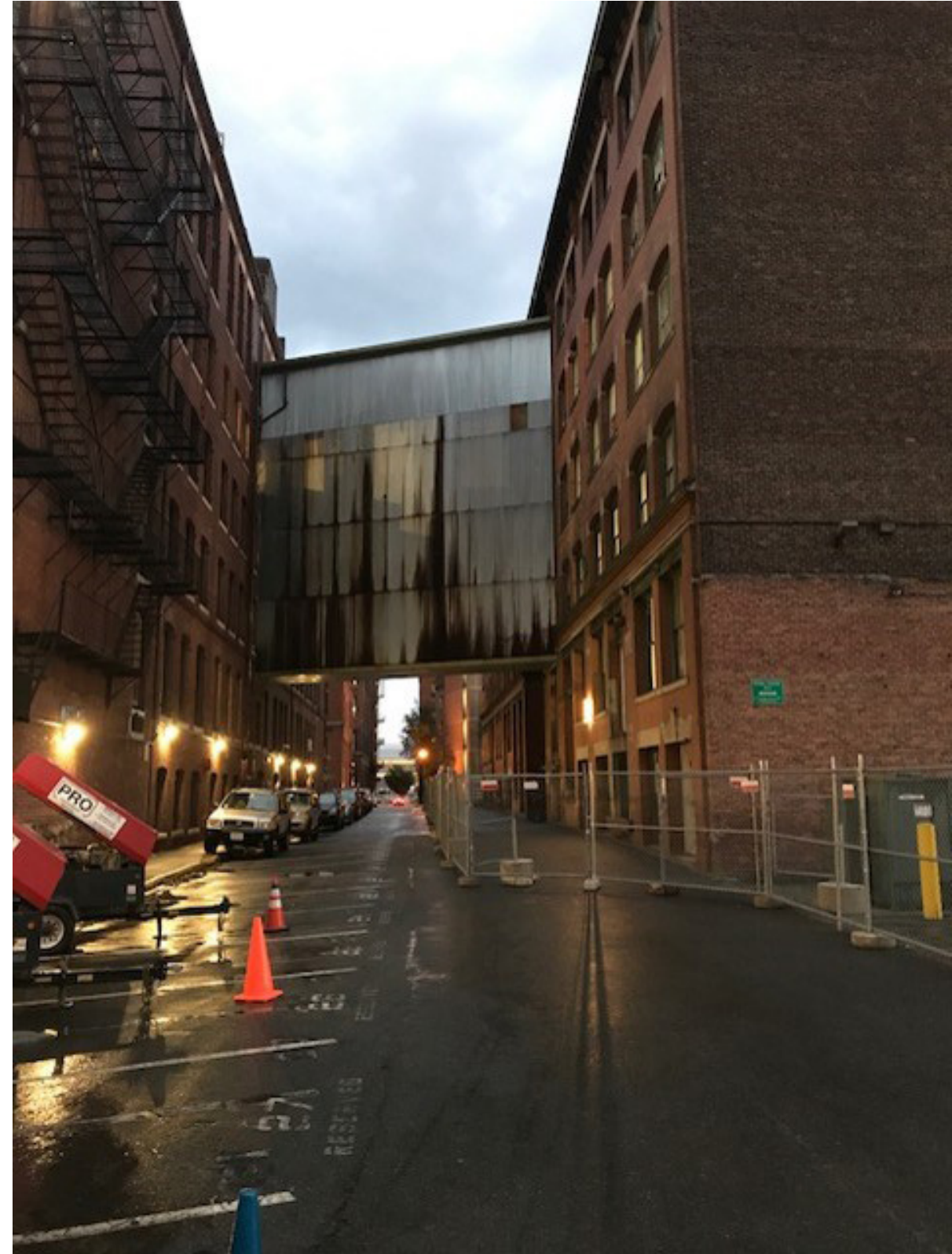


DAY TIME LIGHTS OFF

EXTERIOR LIGHTING UPDATE - LIGHT FIXTURE MOCK UP

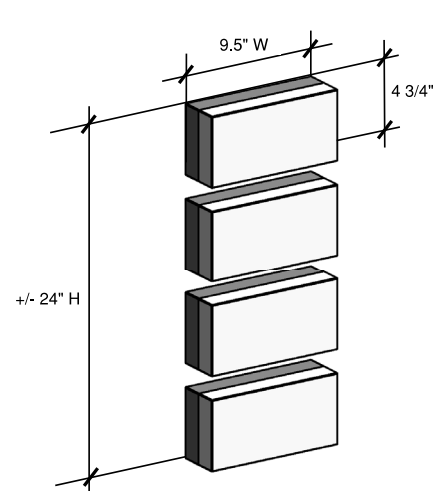
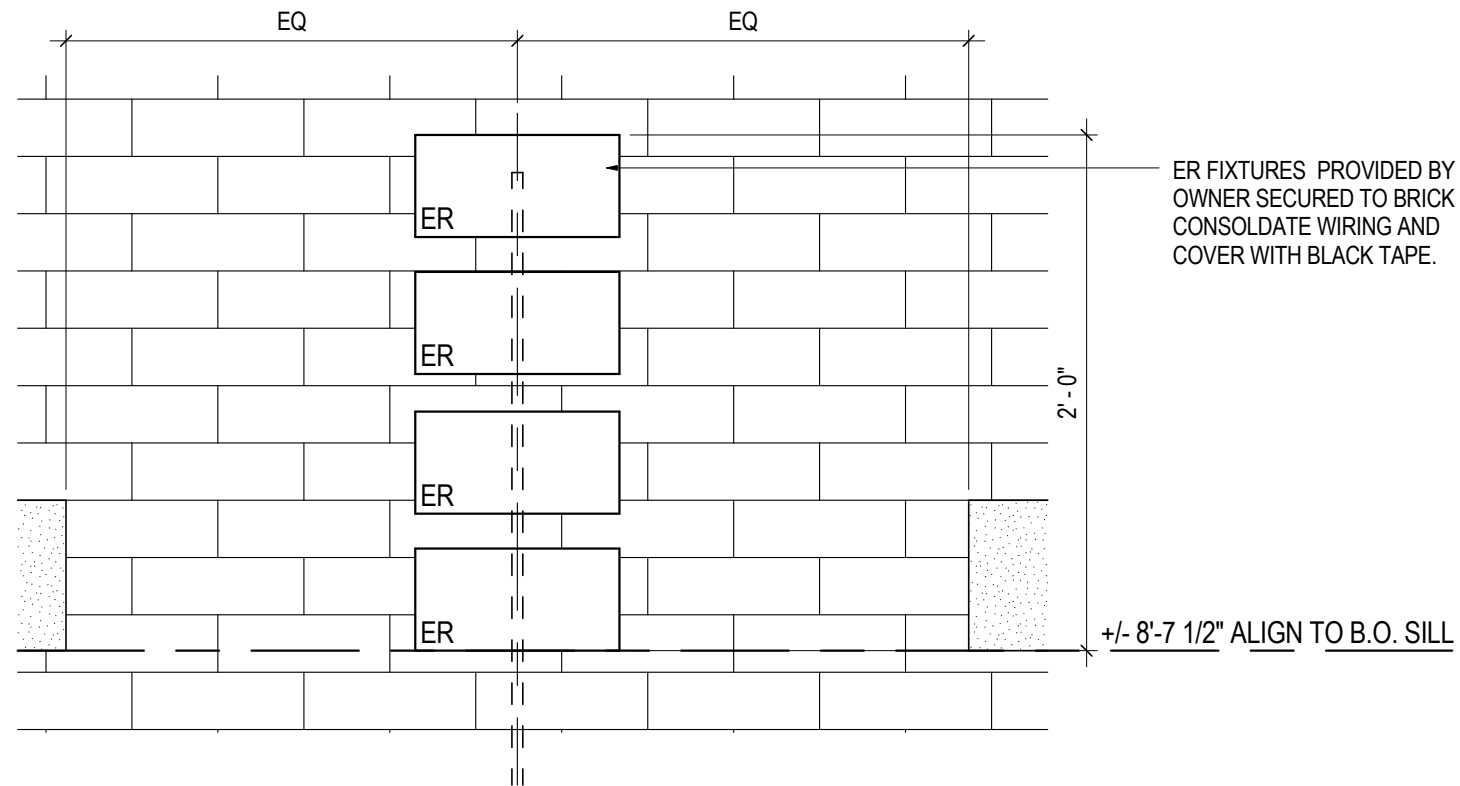


NIGHT TIME LIGHTS ON



DUSK TIME LIGHTS ON, LOOKING INTO NECCO CT, LIGHT TO THE RIGHT

EXTERIOR LIGHTING UPDATE - LIGHT FIXTURE



ER - WALL AREA LIGHT

SPECIFICATIONS

LED WALL LUMINARIES

DIE-CAST ALUMINUM

HEAVY PRESSED CRYSTAL GLASS WITH OPTICAL TEXTURE, WHITE INSIDE

INTEGRAL ELECTRONIC DRIVER - DIMMABLE 0-10V

COLOR TEMPERATURE 3000K (FOR 4000K ADD SUFFIX K4)

FINISH: BLACK

UL OR CSA LISTED, SUITABLE FOR WET LOCATIONS

4.9W LED



LIGHT FROM THE NEIGHBORHOOD

EXTERIOR LIGHTING UPDATE - NECCO CT BRIDGE LIGHTING ANALYSIS



EXTERIOR LIGHTING UPDATE - NECCO CT BRIDGE LIGHTING ANALYSIS



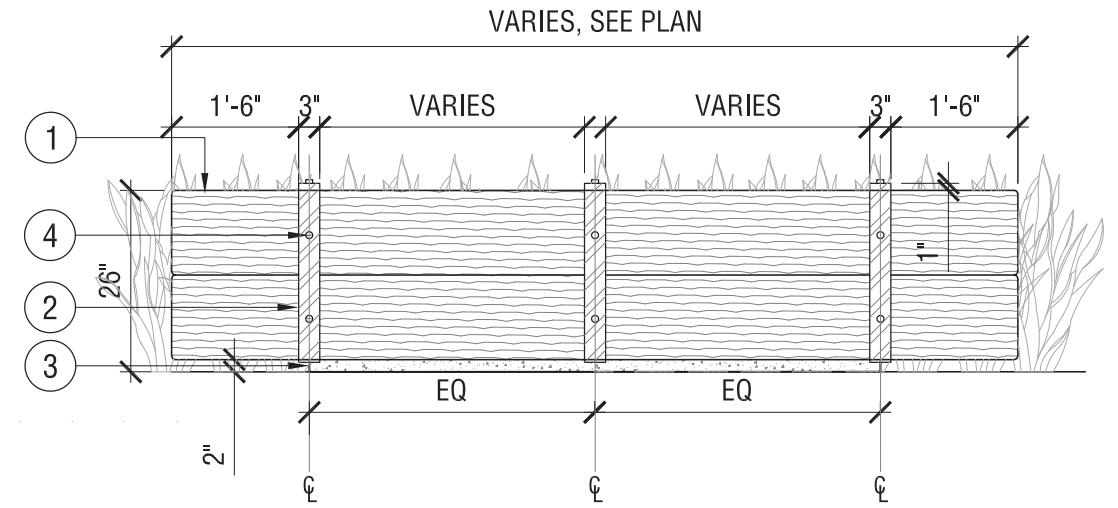
OUTDOOR FURNITURE/ LANDSCAPE UPDATES



OUTDOOR FURNITURE - SEATING DETAILS



- ① WOOD
- ② STAINLESS STEEL BAND. TO BE SPACED EQUAL DISTANCE APART. IF DISTANCE BETWEEN BANDS EXCEEDS 3'-6" A FOURTH BAND SHALL BE ADDED. TO BE APPROVED BY LANDSCAPE ARCHITECT.
- ③ CONCRETE FOOTING
- ④ ROUNDED FASTENERS



THANK YOU

