

PUBLIC INFORMATION MEETING

South Bay Harbor Trail

Boston, MA

August 9, 2017



DESIGN CONSULTANTS, INC.
Engineers, Surveyors, Planners

Project Team



City of Boston

Project Proponent

Design Consultants, Inc.

Responsible for Design

MassDOT's Highway Division

Responsible for administering the Design Process and providing Resident Engineer Services

Federal Highway Administration

Responsible for Oversight

PROJECT AREA

- South Bay Harbor Trail
- Boston | Project File No. 604761



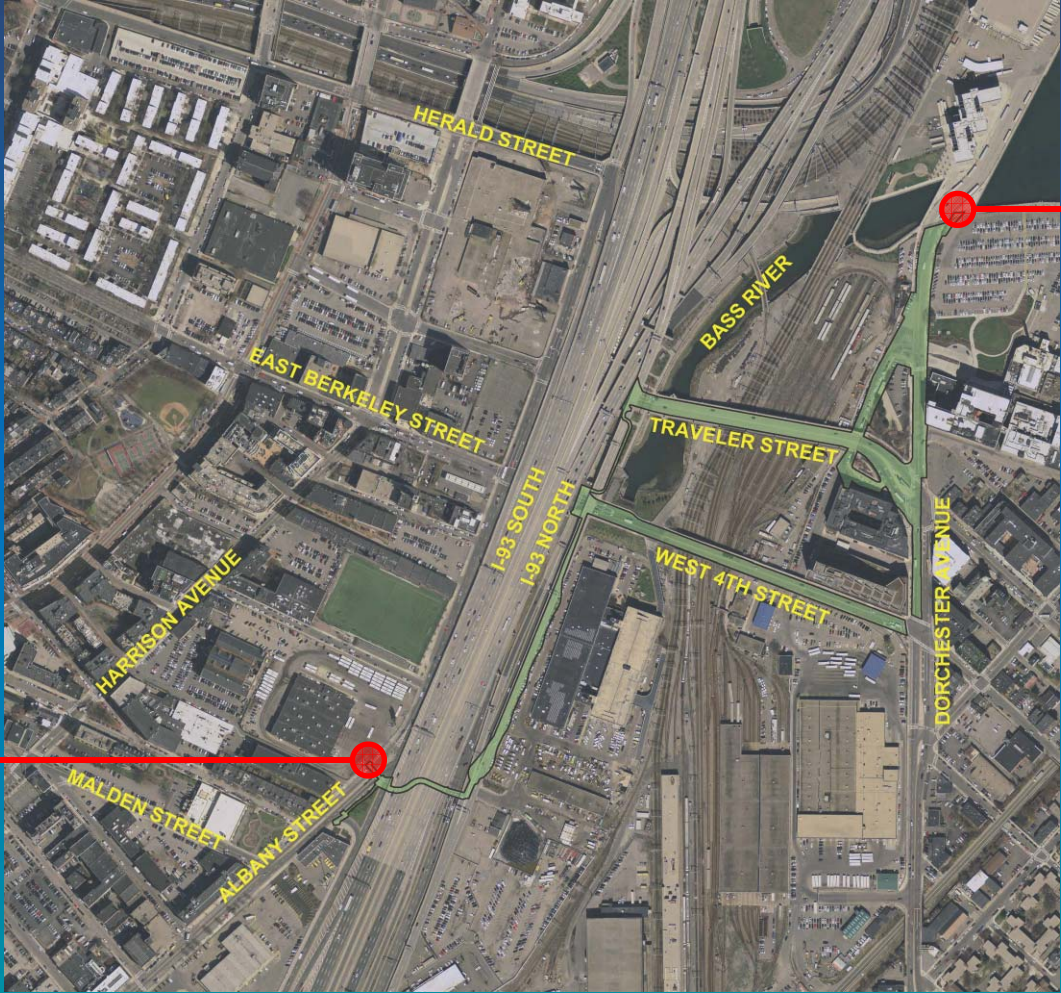
South Bay Harbortrail

- | | |
|---|--|
| 1. Northeastern University/Ruggles MBTA | 13. Ratch Park |
| 2. Roxse Homes (Housing) | 14. 'SOWA' District |
| 3. Madison Park (Housing) | 15. Boston Police/DPW Maintenance Facility |
| 4. Rice Field/Ramsey Park | 16. New Broadway Bridge |
| 5. Boston Water & Sewer | 17. Gillette Company |
| 6. Orchard Park (Housing) | 18. U.S. Postal Annex |
| 7. Harry Miller Company | 19. Boston Wharf Company |
| 8. Crosstown Development | 20. The Childrens Museum |
| 9. Newmarket Business District | 21. MBTA Park |
| 10. BMC/Biosquare Development | 22. The Barking Crab |
| 11. Boston Flower Exchange | 23. John Joseph Moakley U.S. Courthouse |
| 12. CA/T Emergency Response Center | 24. Fan Pier |

LEGEND:

- | | |
|--------------------------|---|
| PUBLIC ROW SECTION |  |
| CA/T ROW |  |
| CHAPTER 91 ACCESS AREA |  |
| ESPLANADE CONNECTIONS |  |
| LINKING THE CORRIDORS |  |
| SOUTHWEST CORRIDOR |  |
| LOWER CHARLES BIKEWAY |  |
| EMERALD NECKLACE BIKEWAY |  |

PROJECT AREA



START OF PHASE I

END OF PHASE I

Project Location
Limits of Work

PROJECT GOALS

South Bay Harbor Trail
Boston | Project File No. 604761

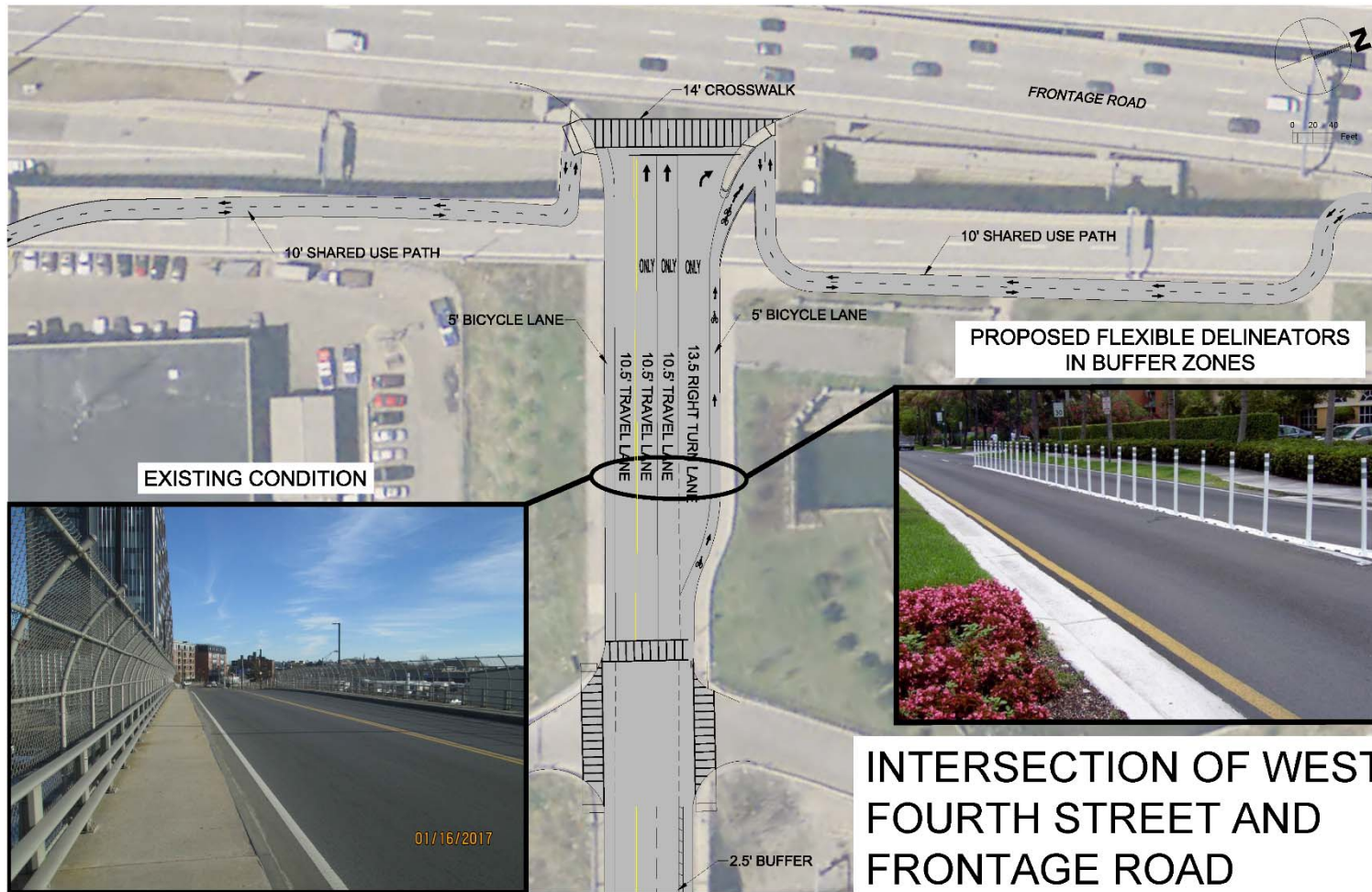
- **Deficient Pedestrian Accommodation** | Improve Pedestrian Accommodation
- **Deficient Bicycle Accommodation** | Improve Bicycle Accommodation
- **Deficient Safety** | Improve Safety
- **Deficient Connectivity** | Connect to the Existing South Bay Harbor Trail at Gillette Property

CONCERNS

- **Bicycle Safety, Vertical Delineation over Bridges**
- **Parking on Dorchester Avenue**
- **Broadway-Dorchester Avenue Intersection**
- **Bicycle Continuity under I-93**
- **Wayfinding**



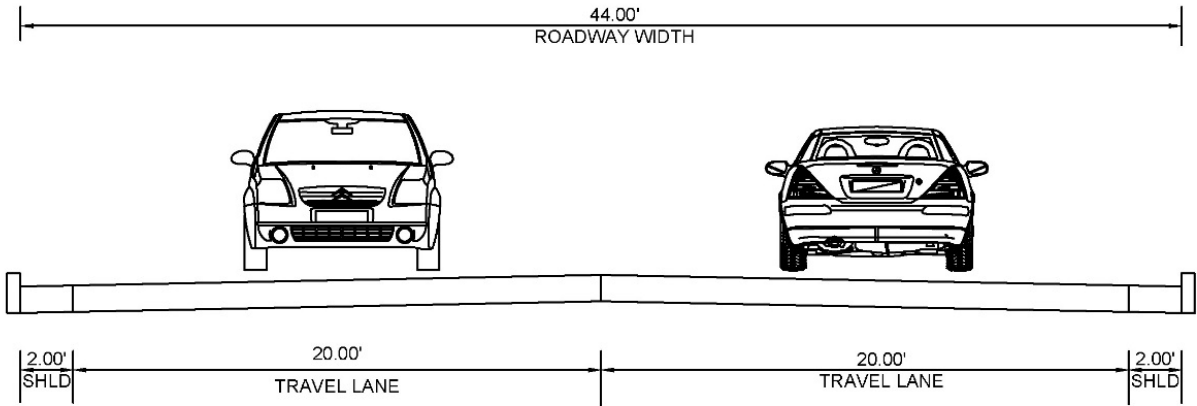
PROPOSED IMPROVEMENTS



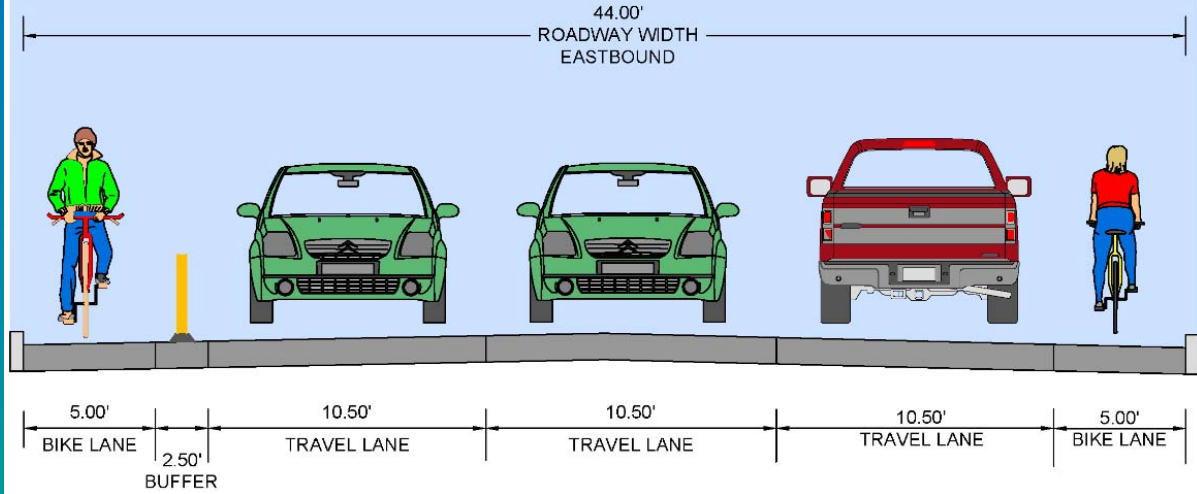


PROPOSED IMPROVEMENTS

EXISTING CONDITION - WEST FOURTH STREET BRIDGE



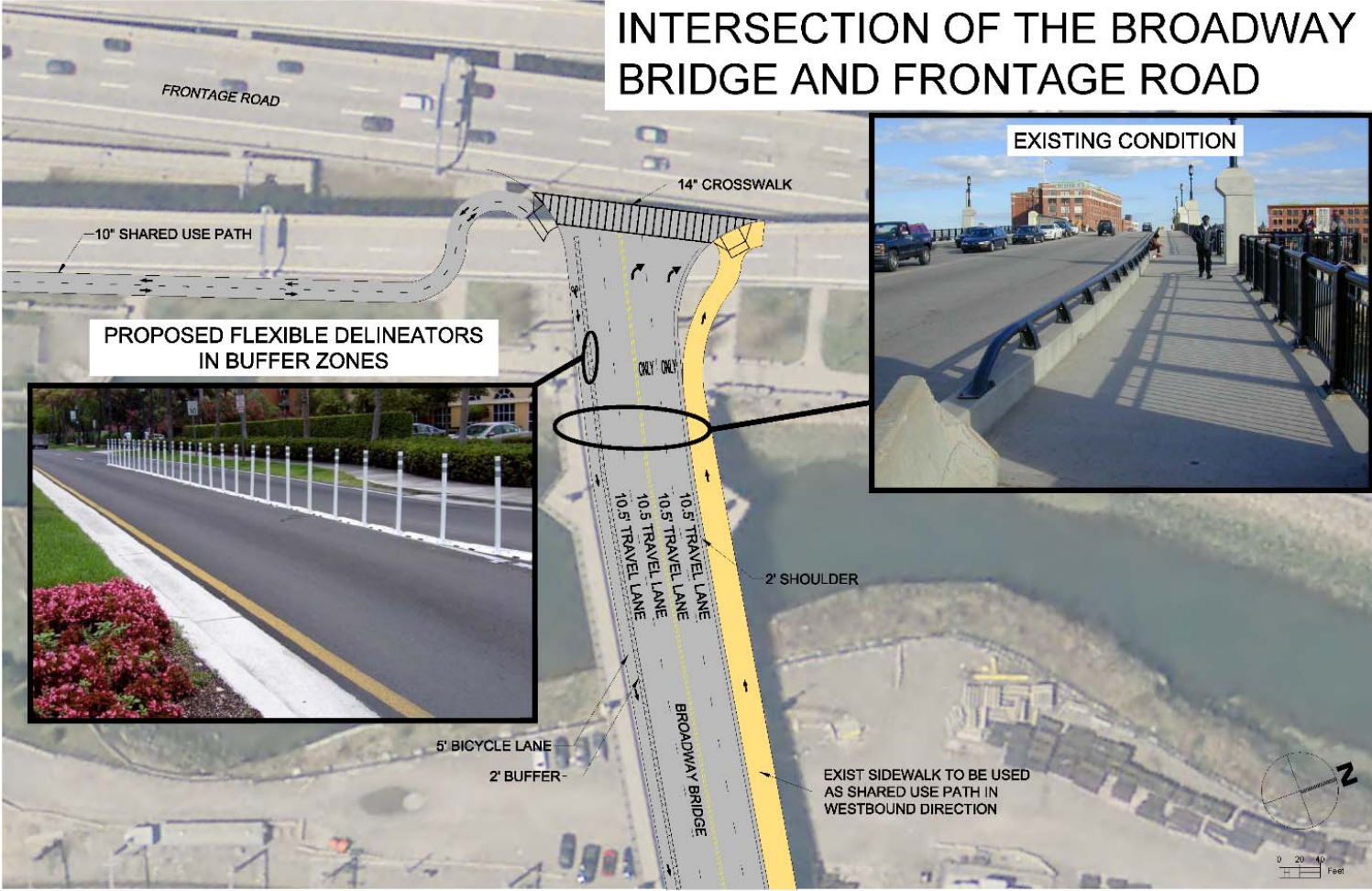
PROPOSED CONDITION - WEST FOURTH STREET BRIDGE





PROPOSED IMPROVEMENTS

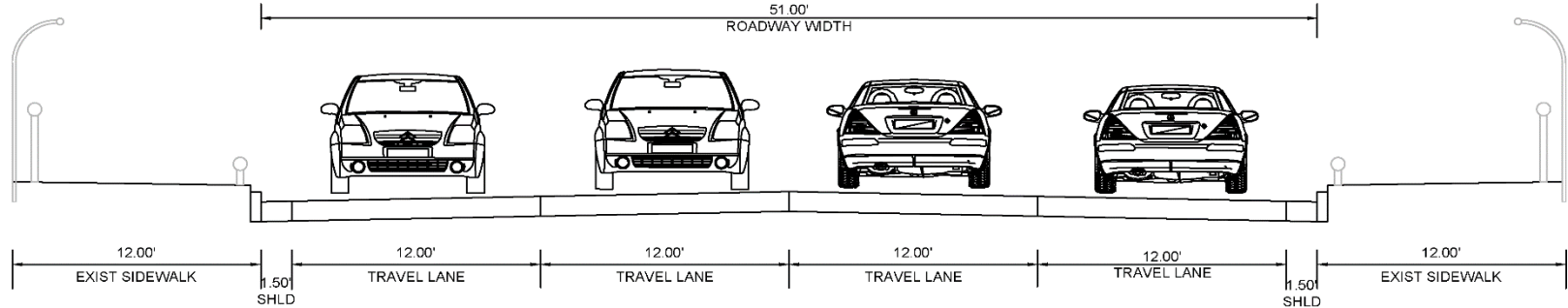
INTERSECTION OF THE BROADWAY BRIDGE AND FRONTAGE ROAD



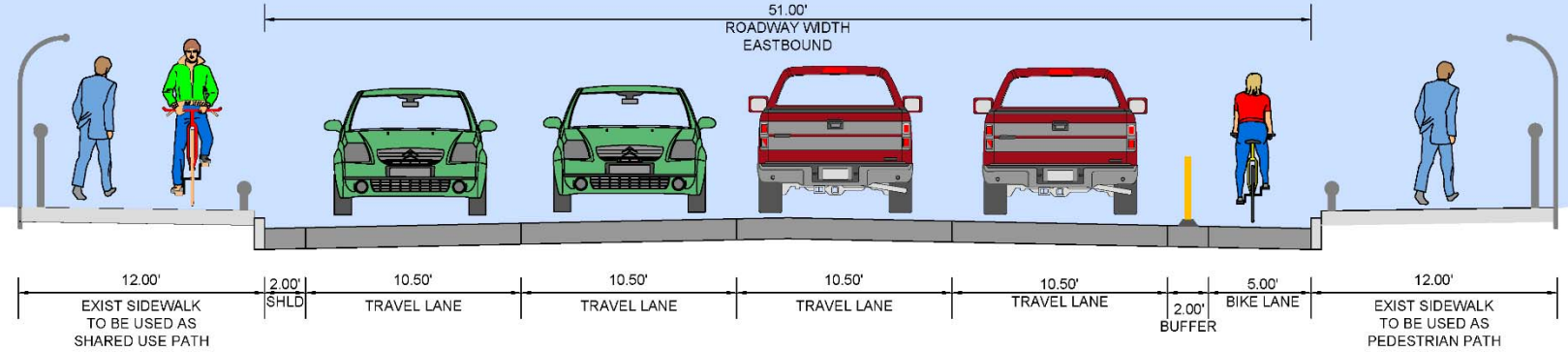


PROPOSED IMPROVEMENTS

EXISTING CONDITION - BROADWAY BRIDGE

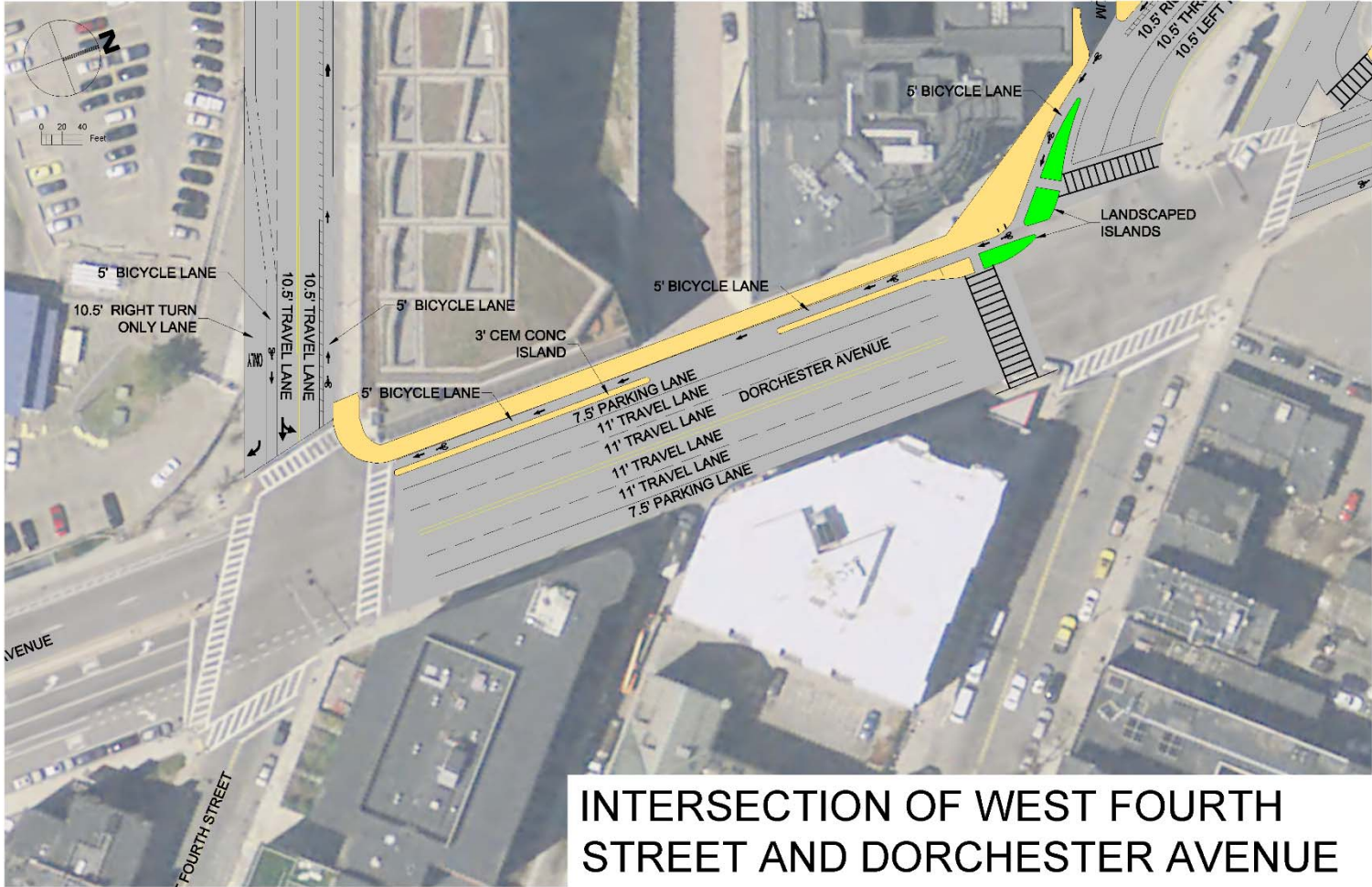


PROPOSED CONDITION - BROADWAY BRIDGE





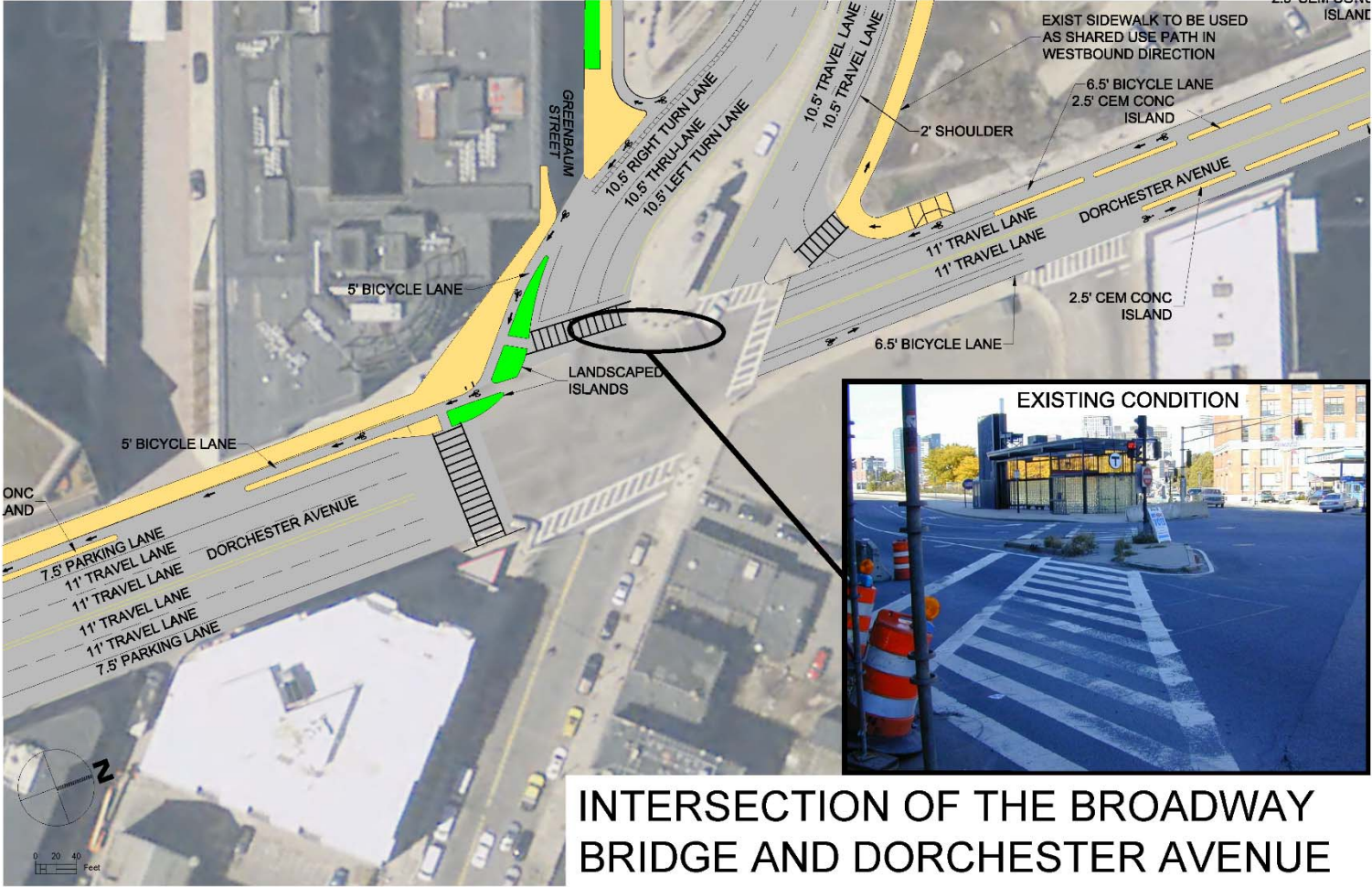
PROPOSED IMPROVEMENTS



INTERSECTION OF WEST FOURTH STREET AND DORCHESTER AVENUE



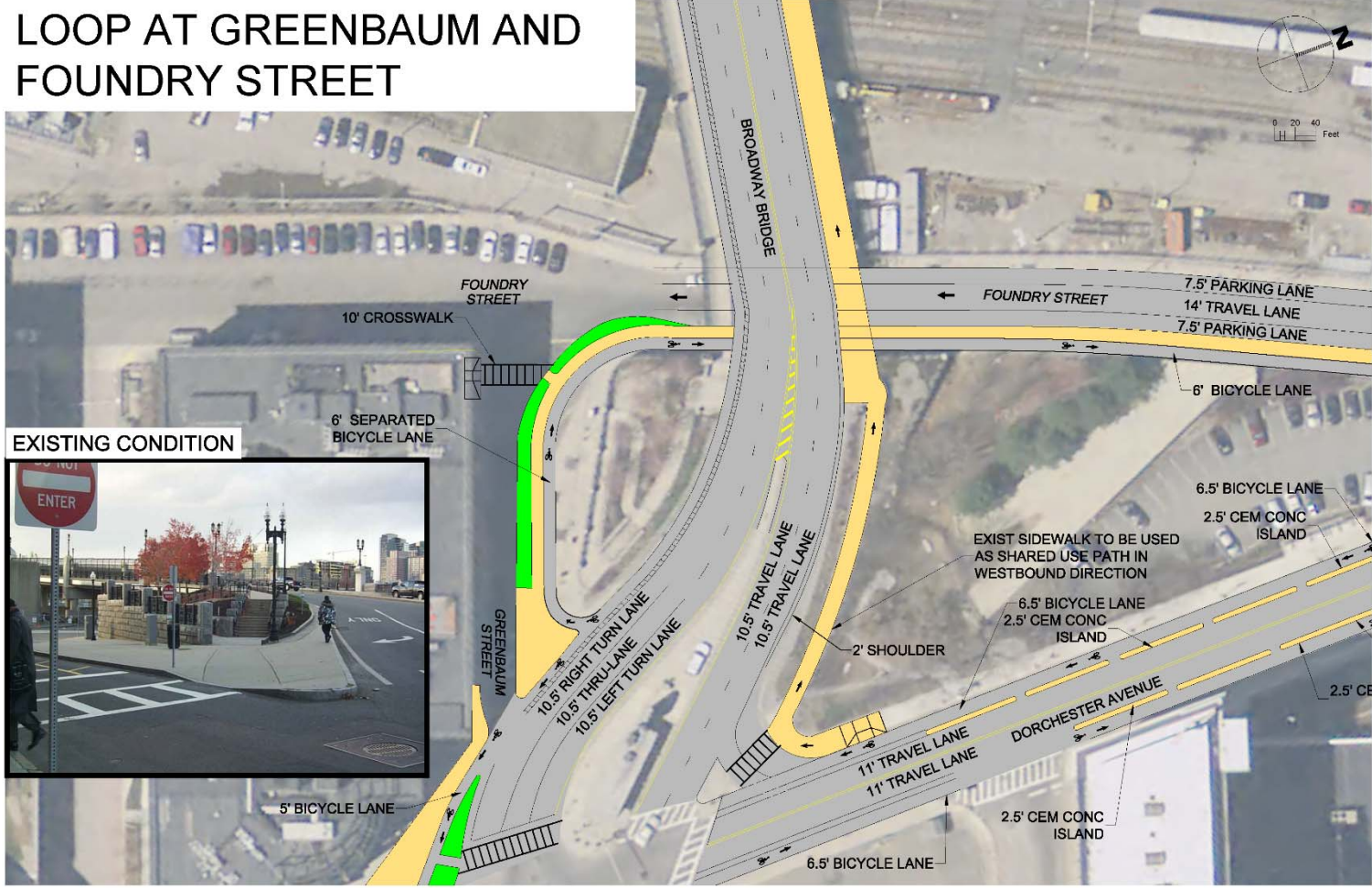
PROPOSED IMPROVEMENTS





PROPOSED IMPROVEMENTS

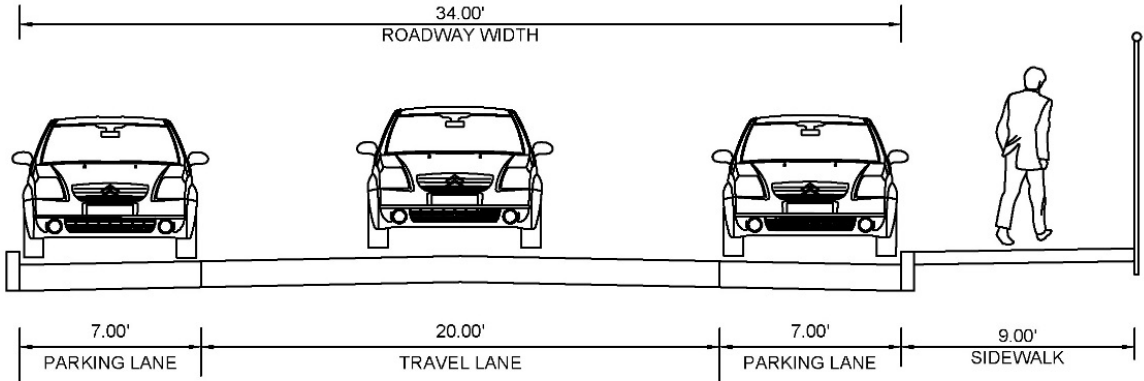
LOOP AT GREENBAUM AND FOUNDRY STREET



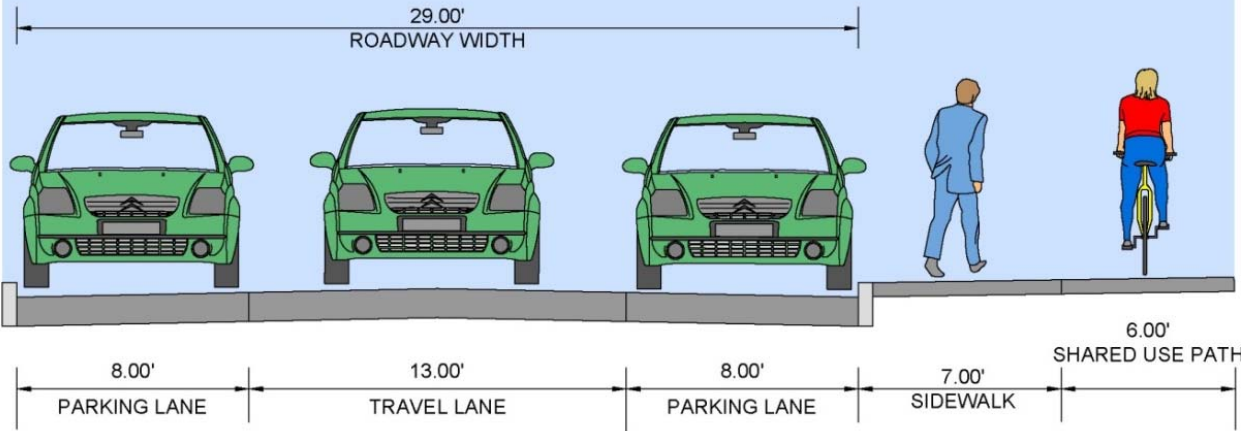


PROPOSED IMPROVEMENTS

EXISTING CONDITION - FOUNDRY STREET

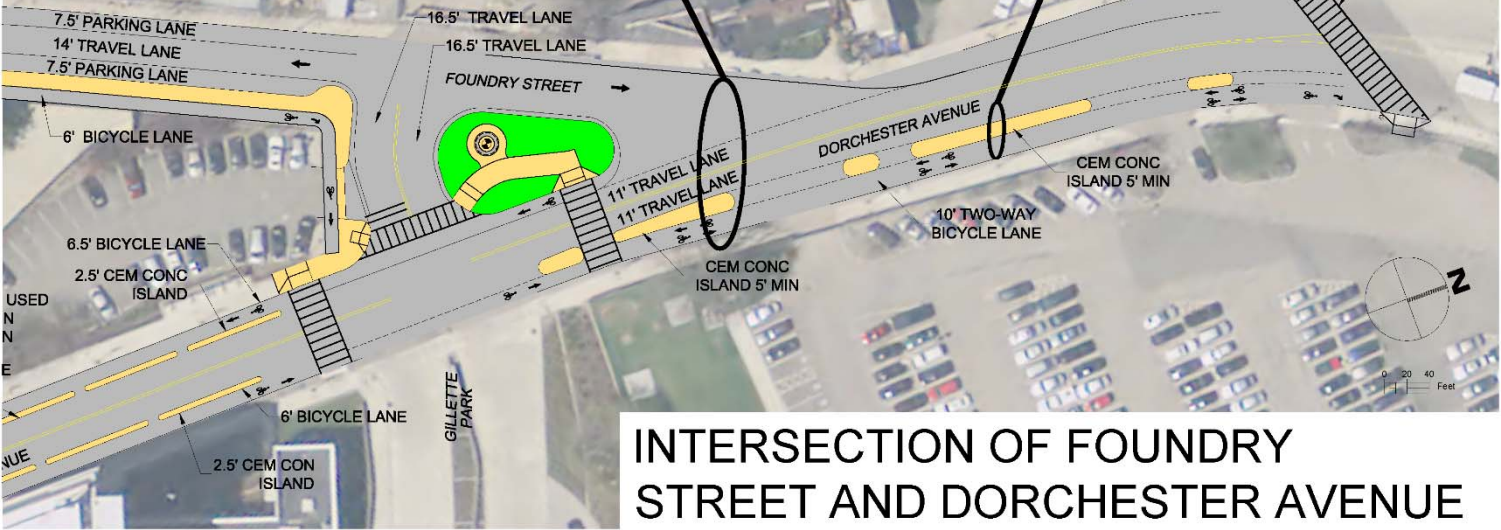


PROPOSED CONDITION - FOUNDRY STREET





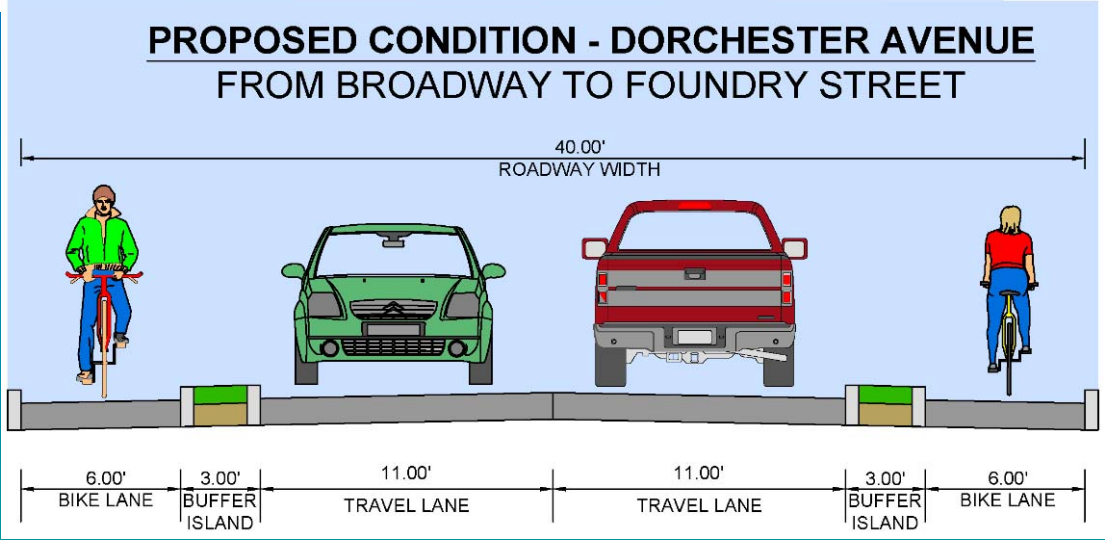
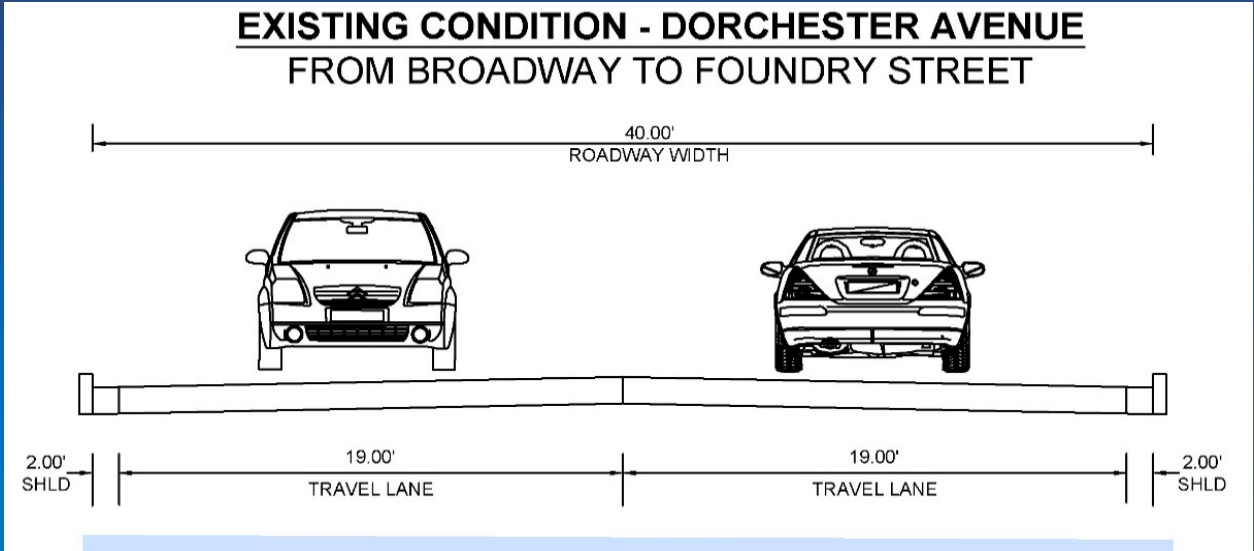
PROPOSED IMPROVEMENTS



INTERSECTION OF FOUNDRY STREET AND DORCHESTER AVENUE



PROPOSED IMPROVEMENTS

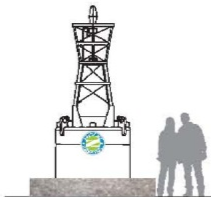




Proposed Improvements

SIGN TYPES – IDENTIFICATION/INFORMATION

IDENTIFICATION/INFORMATION



PRIMARY TRAIL ID

FUNCTION

- trail identifier
- landmark

FEATURES

- logo
- dial-in stories
- surface engravings on pavement

LOCATIONS

- main thoroughfares/significant points of interest

DESIGN CONSIDERATIONS

- minimal use to make them special
- only utilize buoys with lights
- integrate specific busy history into story; for example, its alert purpose, original location, etc.
- integration into surrounding area; for example, painted surrounding water, found objects



SECONDARY TRAIL ID

FUNCTION

- trail identifier
- information, interpretation & storytelling

FEATURES

- logo
- trail map/direction/distance
- points of interest specific to the neighborhood
- printed stories
- harbor theme integrated into structure
- boardwalk-enhances the harbor experience

LOCATIONS

- main intersections/significant points of interest



TERTIARY TRAIL ID (pavement)

FUNCTION

- trail identifier
- direct pedestrians and bikers through intersections and decision points

FEATURES

- logo

LOCATIONS

- Imprinted on pavement

SIGN TYPES – DIRECTION

DIRECTION



TRAIL DIRECTION

FUNCTION

- direction & distance marker

FEATURES

- trail direction and distance

LOCATIONS

- intersections
- adjacent neighborhoods leading to trail



BICYCLE DIRECTION (pavement)

FUNCTION

- movement/directional information for bicycles

FEATURES

- use color as directional orientation element; blue signs in the direction of Fan Pier and green signs in the direction of Ruggles

LOCATIONS

- Imprinted on pavement



PEDESTRIAN DIRECTION (pavement)

FUNCTION

- movement/directional information for pedestrians

FEATURES

- use color as directional orientation element; blue signs in the direction of Fan Pier and green signs in the direction of Ruggles

LOCATIONS

- Imprinted on pavement

Thank You

Q&A

South Bay Harbor Trail
Boston | Project File No. 604761

Public Information Meeting

Mass Bay Credit Union
8/9/17 | 6:30 pm