

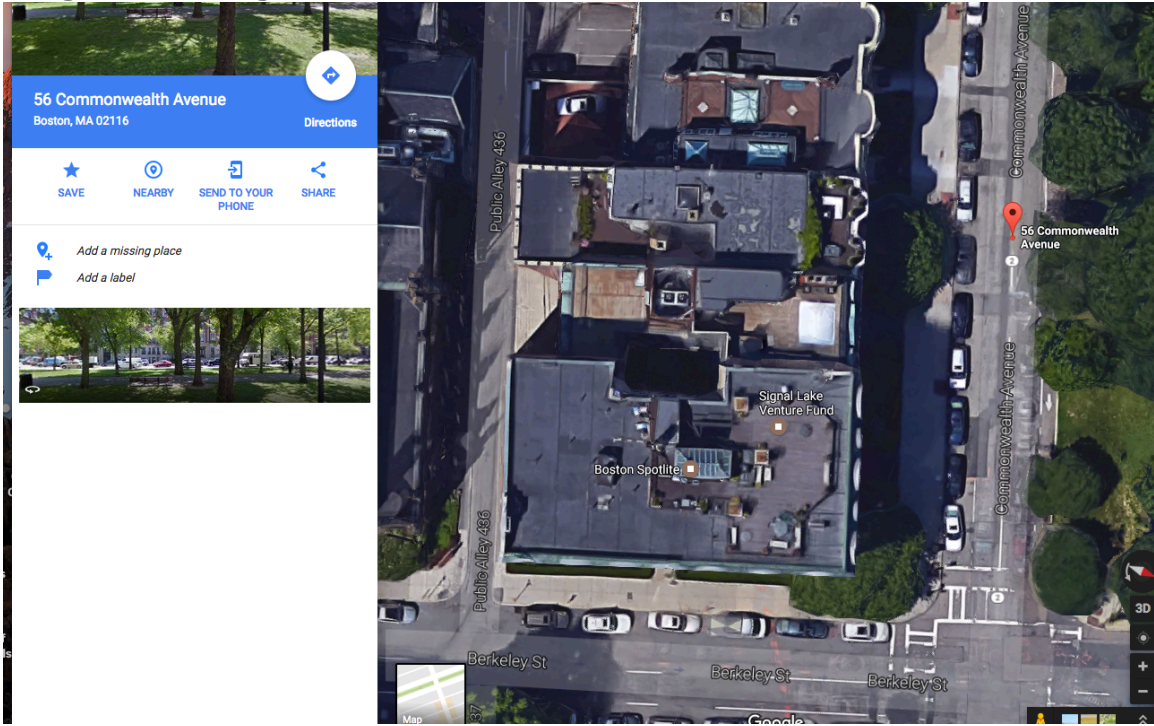
## 56 Commonwealth Ave. Boston, MA

Architectural Window Corporation is proposing the window replacement of the remaining 38 wood windows (single and 2-wide double hung windows). Lite well elevation A & B. Replacement windows to match existing lite divisions and match the Pella aluminum clad windows (elevation C) that got replaced about 8 years ago. All of the proposed windows are located inside the building in an open-air light well and are not visible from any public way.

**Light well inside the building – not visible from public way:**



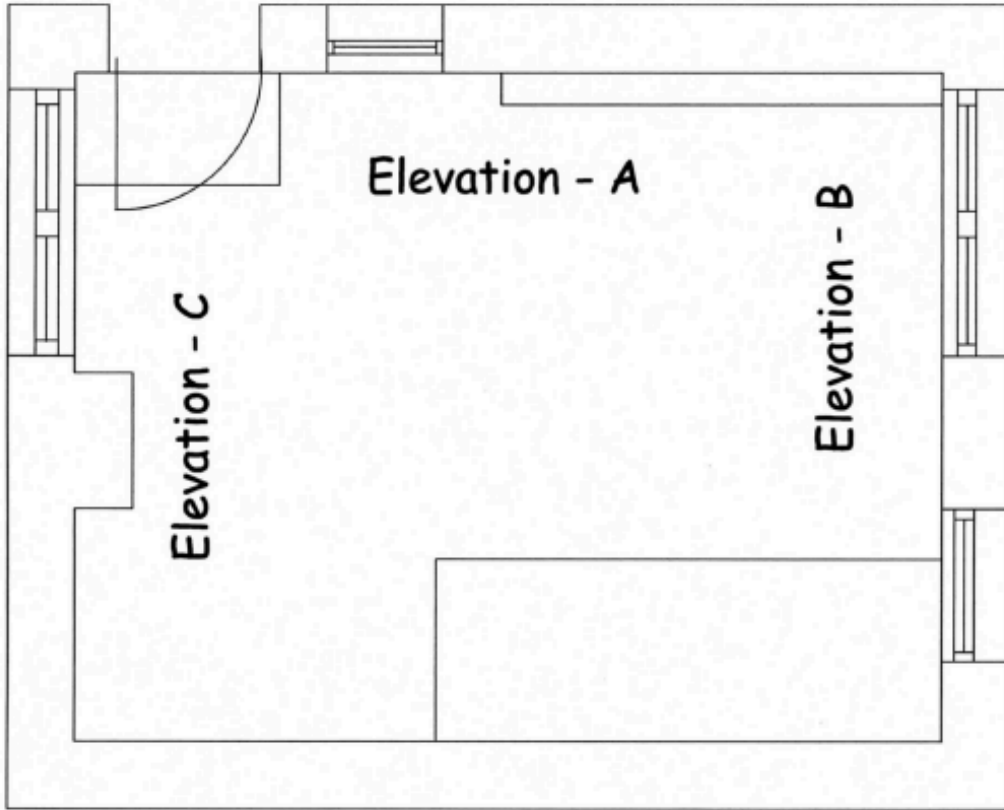
**Google Earth image:**



**Pella Aluminum clad windows (Replaced ~8 years ago)**



**Floor plan at ground level**



# Plan Lightwell

No Scale

**Proposed Quaker aluminum clad windows to match Pella aluminum clad windows:**

Qty.	Size	Lite divisions	Description
6	23" x 51"	4-over-1	Single double hung
7	64" x 64"	6-over-1	2-wide double hung (counts = 2 units)
8	31" x 64"	6-over-1	Single double hung
10	38" x 64"	6-over-1	Single double hung





**Existing wood windows (above)**



**Existing wood windows - Part 2 (Above)**

**Rooftop Photo:** Neighbors are unable to look down into the light well



50 Comm. Ave (left)

52 Comm. Ave. (Center)

56 Comm. Ave. (Right)





**Front of building: No windows affected (Above)**



**Rear of building: Also has Pella aluminum clad windows (~8 years old)**





**Pella aluminum clad windows (elevation C) lite well**

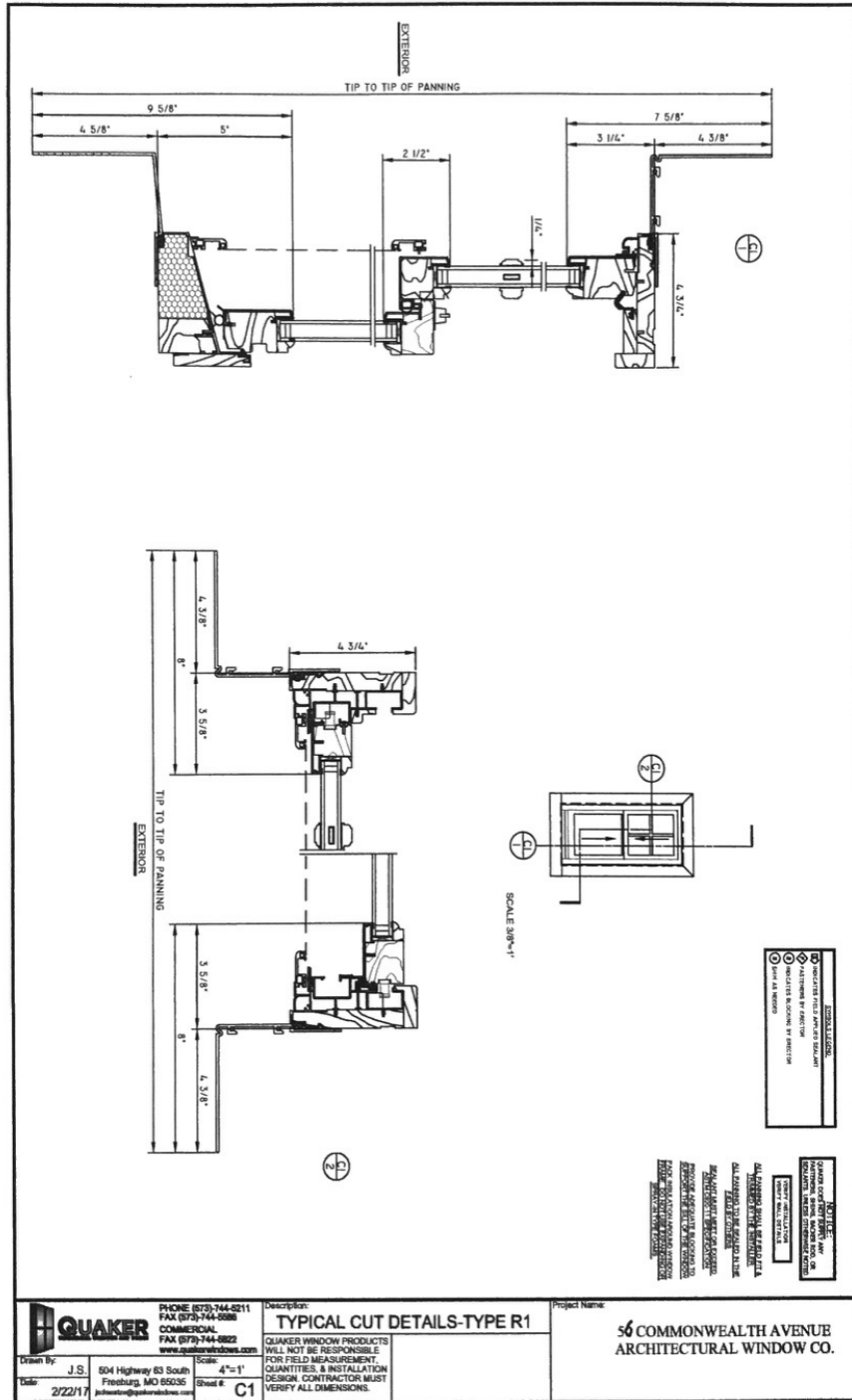


**Existing wood windows in lite well**



**Existing wood window lite well**





**GENERAL NOTES:**

- 1. QUAKER WINDOW PRODUCTS SHALL BE INSTALLED IN ACCORDANCE WITH THE MANUFACTURER'S INSTALLATION INSTRUCTIONS.
- 2. QUAKER WINDOW PRODUCTS SHALL BE INSTALLED IN ACCORDANCE WITH THE MANUFACTURER'S INSTALLATION INSTRUCTIONS.
- 3. QUAKER WINDOW PRODUCTS SHALL BE INSTALLED IN ACCORDANCE WITH THE MANUFACTURER'S INSTALLATION INSTRUCTIONS.

**NOTES:**

- 1. QUAKER WINDOW PRODUCTS SHALL BE INSTALLED IN ACCORDANCE WITH THE MANUFACTURER'S INSTALLATION INSTRUCTIONS.
- 2. QUAKER WINDOW PRODUCTS SHALL BE INSTALLED IN ACCORDANCE WITH THE MANUFACTURER'S INSTALLATION INSTRUCTIONS.
- 3. QUAKER WINDOW PRODUCTS SHALL BE INSTALLED IN ACCORDANCE WITH THE MANUFACTURER'S INSTALLATION INSTRUCTIONS.

**QUAKER**  
 PHONE (870) 744-8511  
 FAX (870) 744-8582  
 COMMERCIAL  
 FAX (870) 744-8582  
 www.quakerwindows.com  
 Scale: 4"=1'  
 Title: 2/22/17  
 Designer: J.S.  
 604 Highway 63 South  
 Freeburg, MO 65036  
 jshaw@quakerwindows.com

**TYPICAL CUT DETAILS-TYPE R1**  
 QUAKER WINDOW PRODUCTS  
 WILL NOT BE RESPONSIBLE  
 FOR FIELD MEASUREMENT,  
 QUANTITIES, & INSTALLATION  
 DESIGN. CONTRACTOR MUST  
 VERIFY ALL DIMENSIONS.

Project Name: 56 COMMONWEALTH AVENUE  
 ARCHITECTURAL WINDOW CO.

Sheet # C1