

39 Grove St.



37 Grove St.



37 Grove



Existing side door
at 37 Grove St.



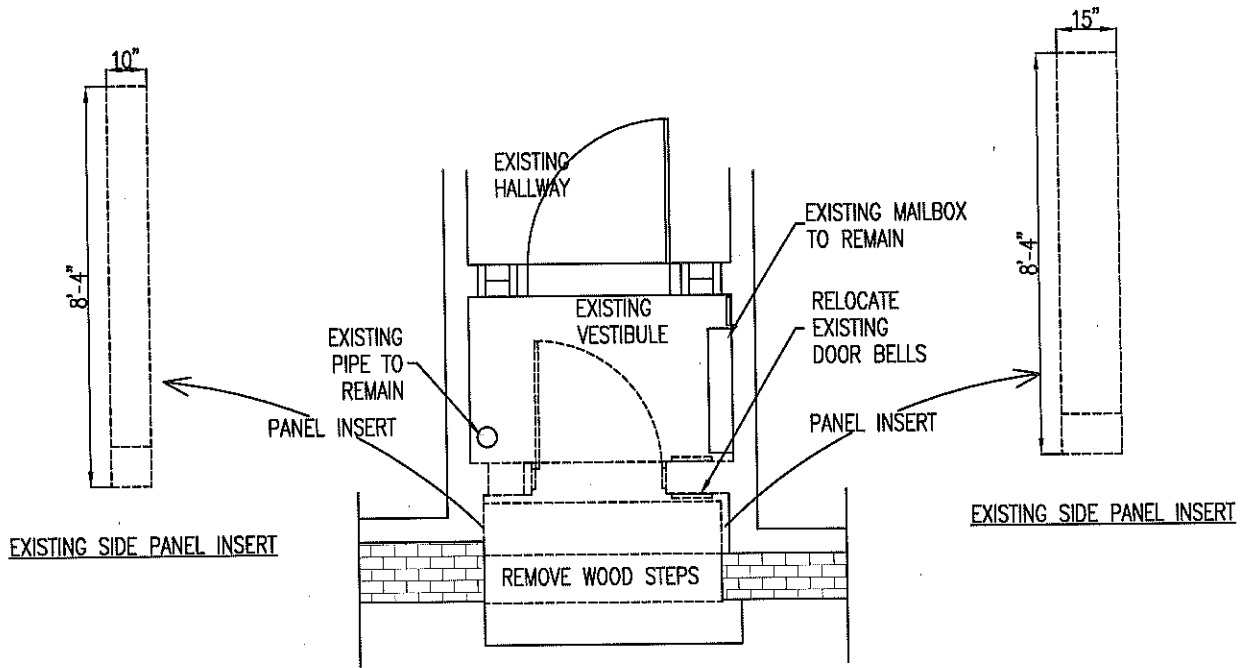




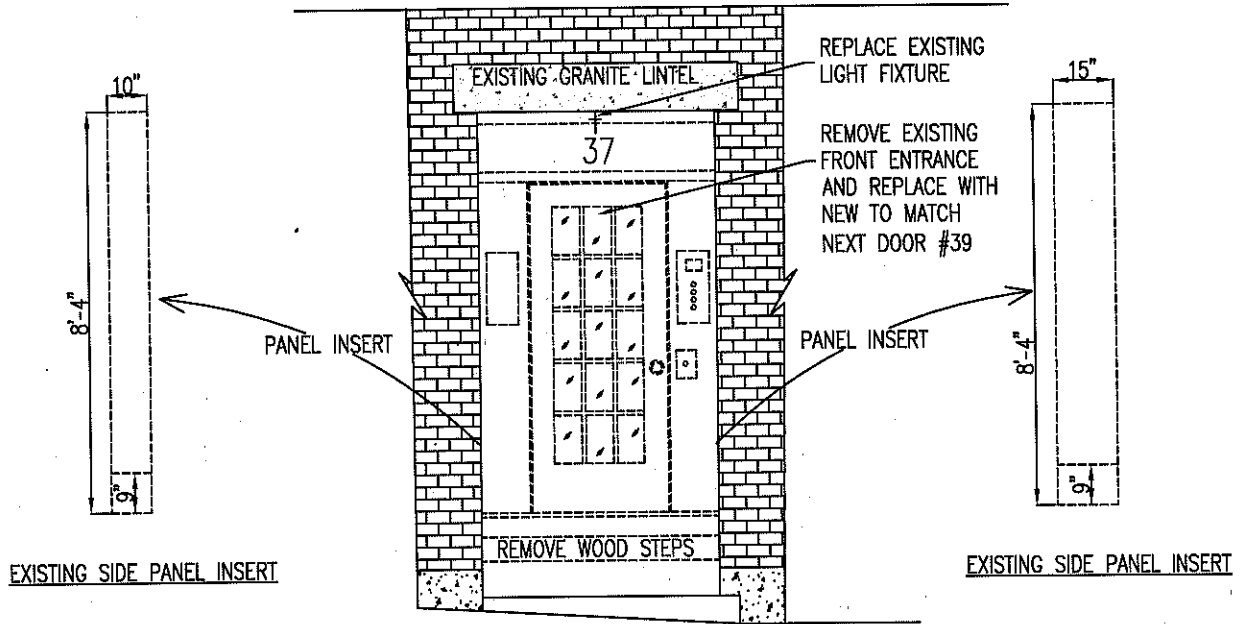
Existing side/door
at 39 Grove St.



EXISTING CONDITION



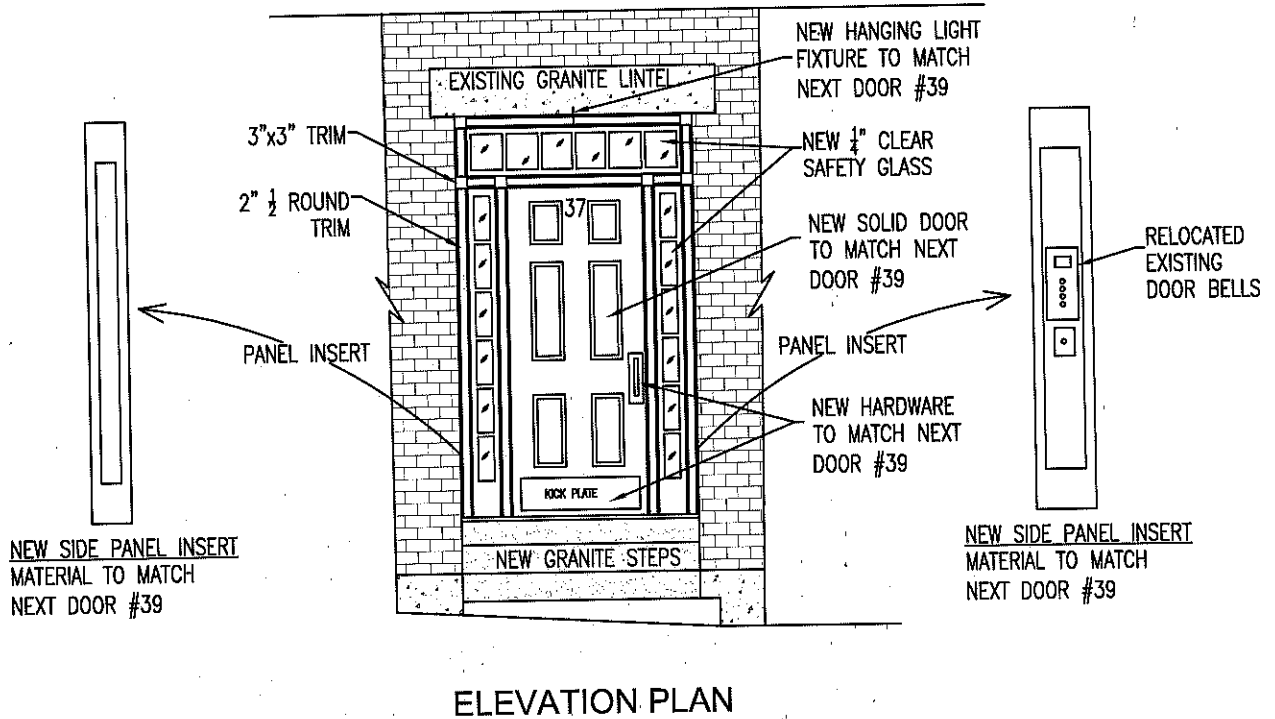
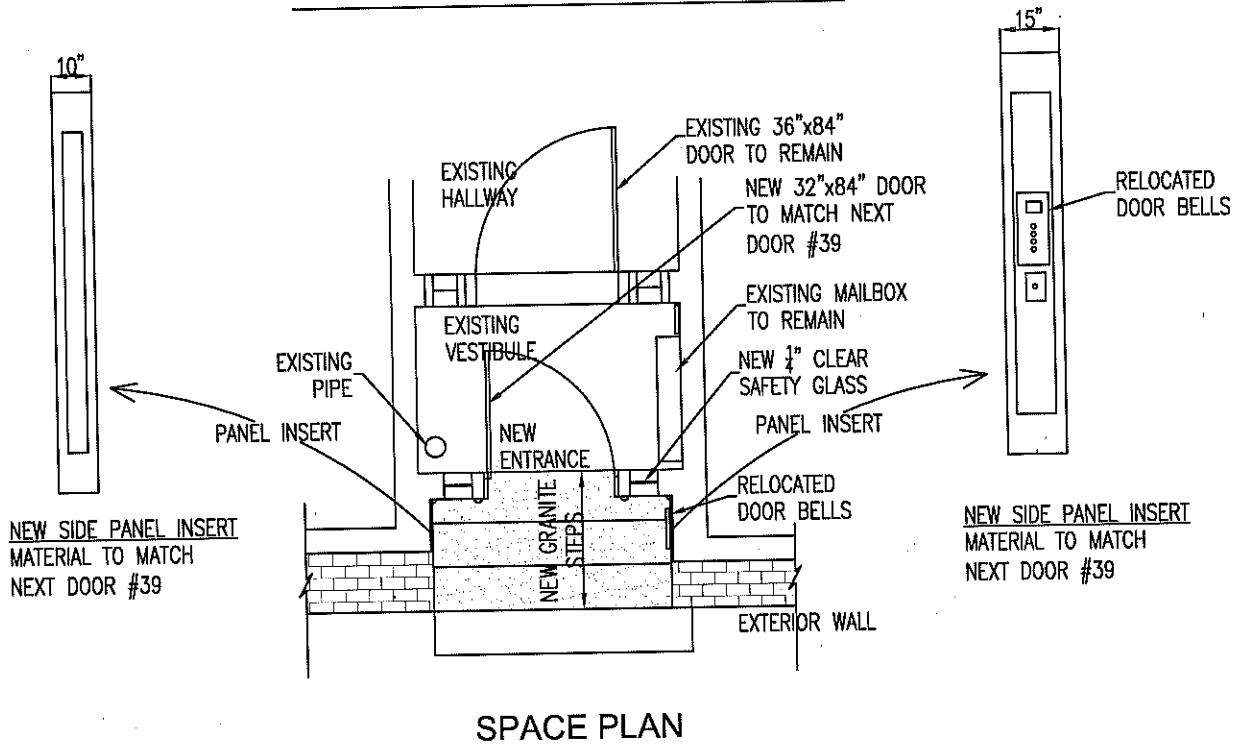
DEMOLITION PLAN



DEMOLITION PLAN

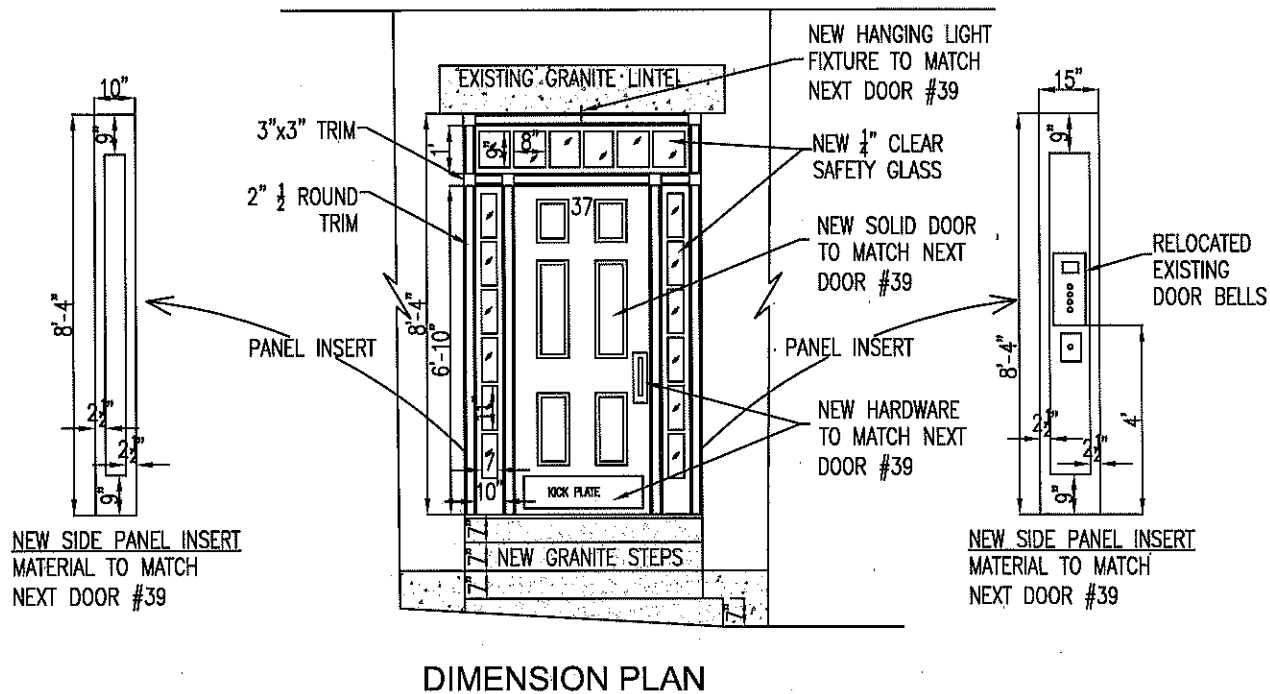
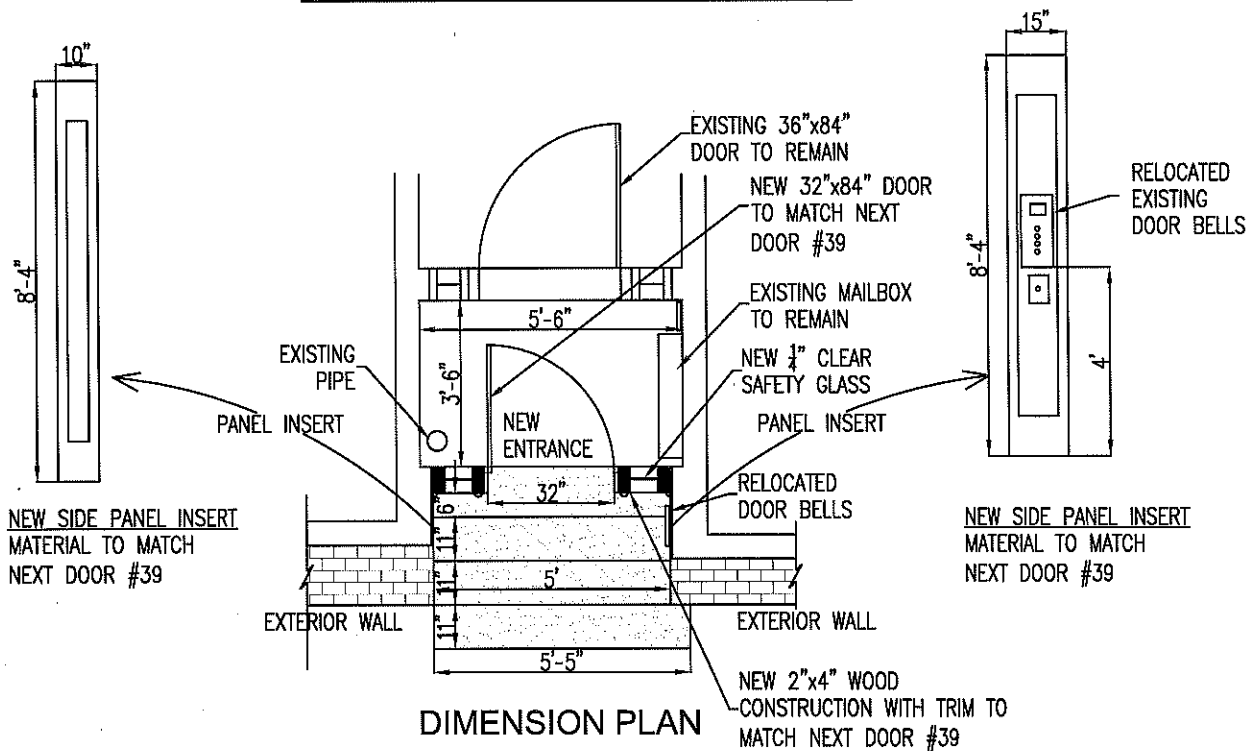
Notes	Paul Zbruz Design Architecture Planning Interior Design 21 Nichole street Lowell, MA 01851 (617) 413-7027 Email: pzbruz@yahoo.com	Project: NEW ENTRANCE 37 GROVE STREET BOSTON, MA	Project No.: Date: 3-17-2017 Scale: 1/4"=1'-0" Revisions:	Drawn: PVZ Checked: Approved: Sheet:
	GROUND FLOOR	Title: DEMOLITION PLAN		A2

NEW PROPOSED



Notes	Paul Zbruz Design Architecture Planning Interior Design 21 Nichols street Lowell, MA 01851 (617) 413-7027 Email: pzbruz@yahoo.com	Project: NEW ENTRANCE 37 GROVE STREET BOSTON, MA	Project No.:	Drawn: PVZ
	GROUND FLOOR	Title: SPACE PLAN ELEVATIONS PLAN	Date: 3-17-2017	Checked:
			Scale: 1/4"=1'-0"	Approved:
			Revisions:	Sheet: A1

NEW PROPOSED



Notes	Paul Zbruz Design Architecture Planning Interior Design 21 Nichols street Lowell, MA 01851 (617) 413-7027 Email: pzbruz@yahoo.com	Project: NEW ENTRANCE 37 GROVE STREET BOSTON, MA	Project No.: Date: 3-17-2017 Scale: 1/4"=1'-0"	Drawn: PVZ Checked: Approved:
	GROUND FLOOR	Title: DIMENSION PLAN	Revisions:	Sheet: A3