

253 SUMMER ST

DOOR AND ENTRANCE AREA REPAIRS

LANDMARKS SUBMISSION 3.21.17

- 253 SUMMER DOOR REPAIR AND RECLADDING, FLOOR PAVING AND HANDRAIL REPLACEMENT





1898-1907 View of 253 Summer Street from Canal



1898-1907 View up Melcher Street

HISTORICAL PHOTOS _ 253 SUMMER STREET

BOSTON MA 02210

march 2017



View from across Summer St



View down Melcher St from across Summer St



View from Summer St Bridge



approach from summer street walking SE



threshold condition @ entry door



approach from summer street walking NW



threshold condition @ interior vestibule



existing guardrail / handrail configuration

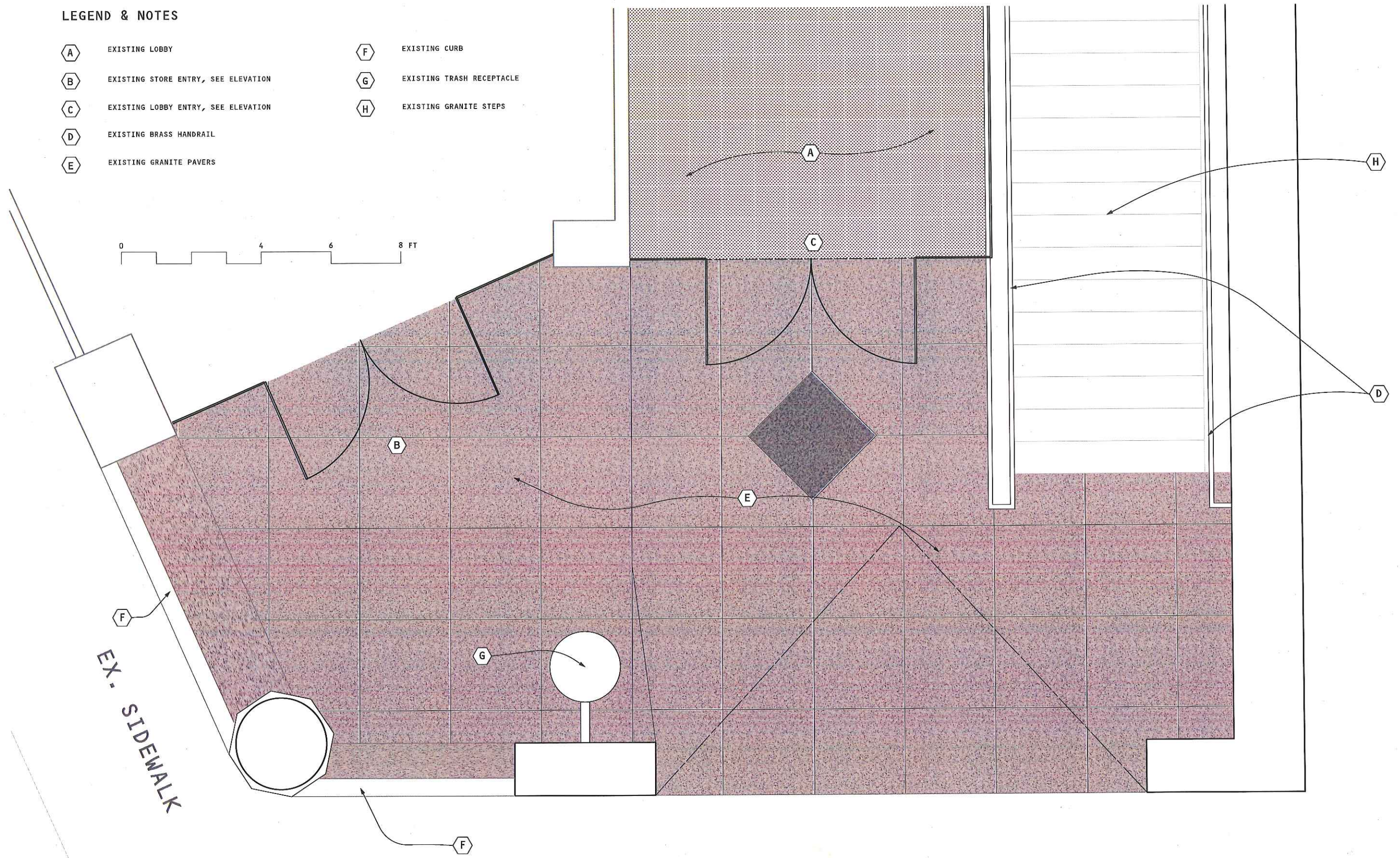
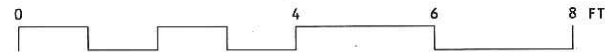
EXISTING ENTRY VIEWS _ 253 SUMMER STREET

BOSTON MA 02210

march 2017

LEGEND & NOTES

- | | | | |
|----------|-------------------------------------|----------|---------------------------|
| A | EXISTING LOBBY | F | EXISTING CURB |
| B | EXISTING STORE ENTRY, SEE ELEVATION | G | EXISTING TRASH RECEPTACLE |
| C | EXISTING LOBBY ENTRY, SEE ELEVATION | H | EXISTING GRANITE STEPS |
| D | EXISTING BRASS HANDRAIL | | |
| E | EXISTING GRANITE PAVERS | | |



EX. SIDEWALK

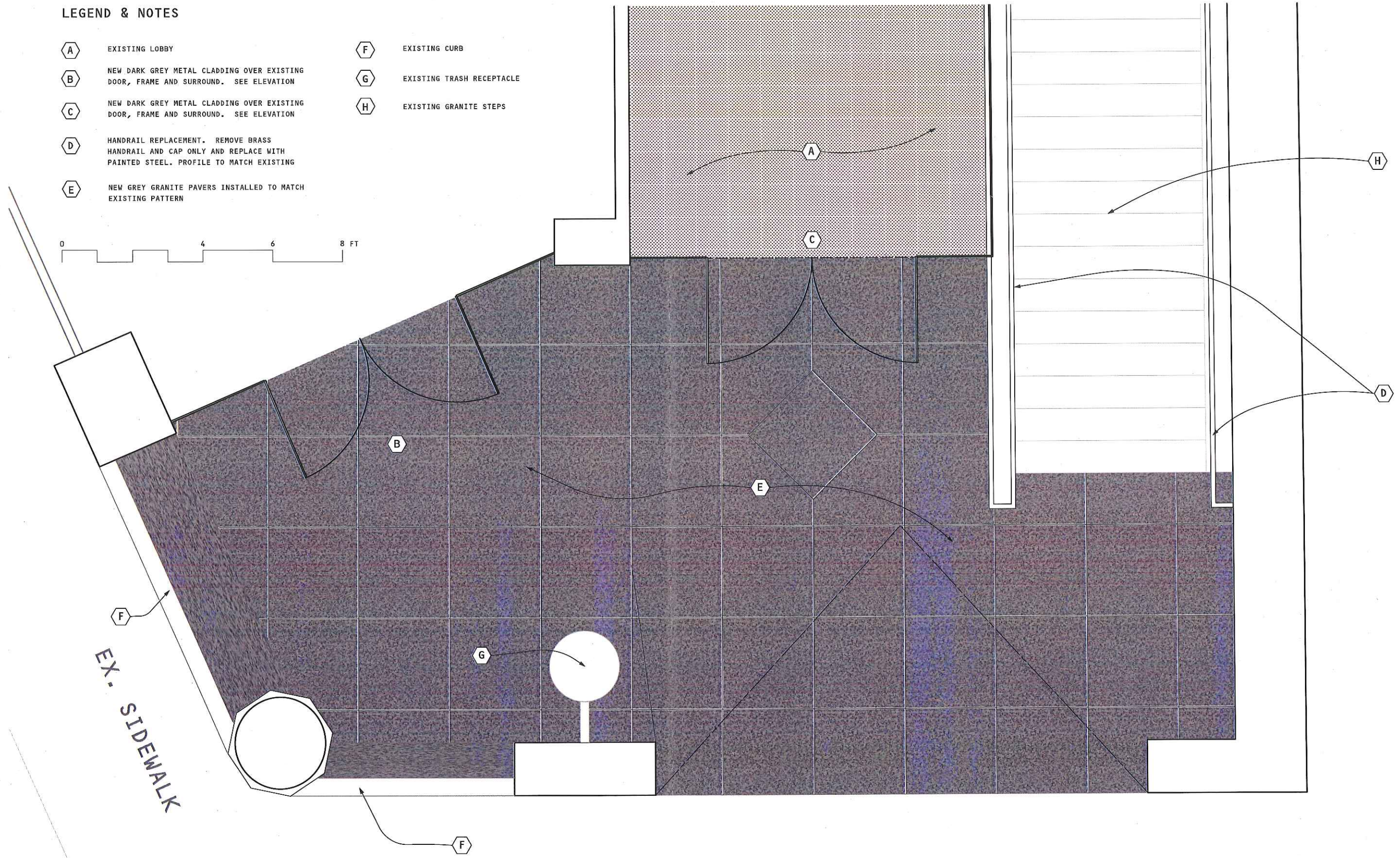
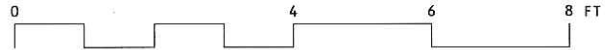
EXISTING PLAN _ 253 SUMMER STREET

BOSTON MA 02210

MARCH 2017

LEGEND & NOTES

- | | | | |
|----------|--|----------|---------------------------|
| A | EXISTING LOBBY | F | EXISTING CURB |
| B | NEW DARK GREY METAL CLADDING OVER EXISTING DOOR, FRAME AND SURROUND. SEE ELEVATION | G | EXISTING TRASH RECEPTACLE |
| C | NEW DARK GREY METAL CLADDING OVER EXISTING DOOR, FRAME AND SURROUND. SEE ELEVATION | H | EXISTING GRANITE STEPS |
| D | HANDRAIL REPLACEMENT. REMOVE BRASS HANDRAIL AND CAP ONLY AND REPLACE WITH PAINTED STEEL. PROFILE TO MATCH EXISTING | | |
| E | NEW GREY GRANITE PAVERS INSTALLED TO MATCH EXISTING PATTERN | | |



EX. SIDEWALK

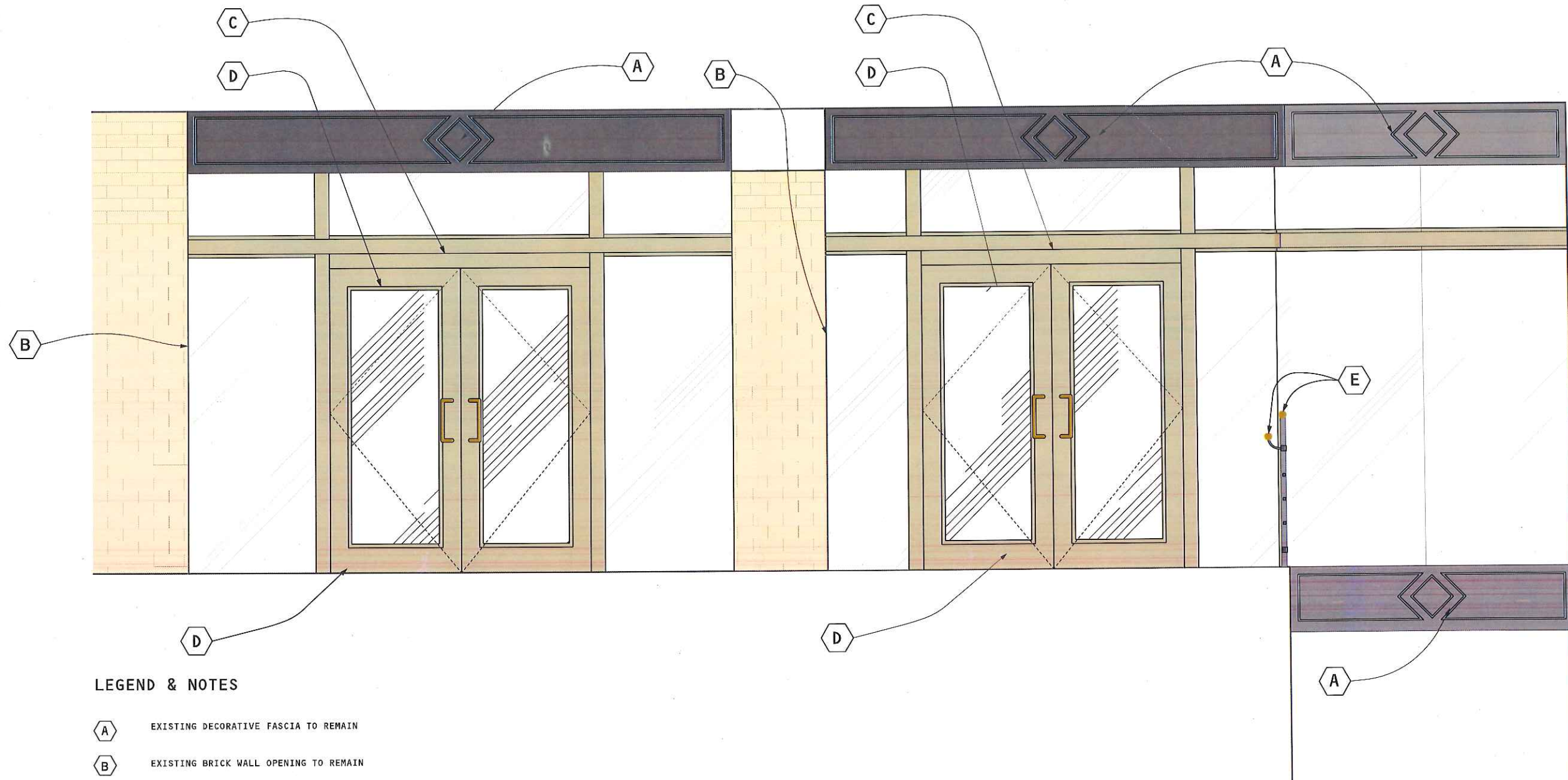
PROPOSED PLAN _ 253 SUMMER STREET

BOSTON MA 02210

MARCH 2017

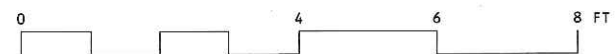
STORE ENTRY

LOBBY ENTRY



LEGEND & NOTES

- A EXISTING DECORATIVE FASCIA TO REMAIN
- B EXISTING BRICK WALL OPENING TO REMAIN
- C EXISTING BRASS CLADDING
- D EXISTING DOOR FRAME, HEADER & SURROUND TO REMAIN
- E EXISTING BRASS HANDRAIL



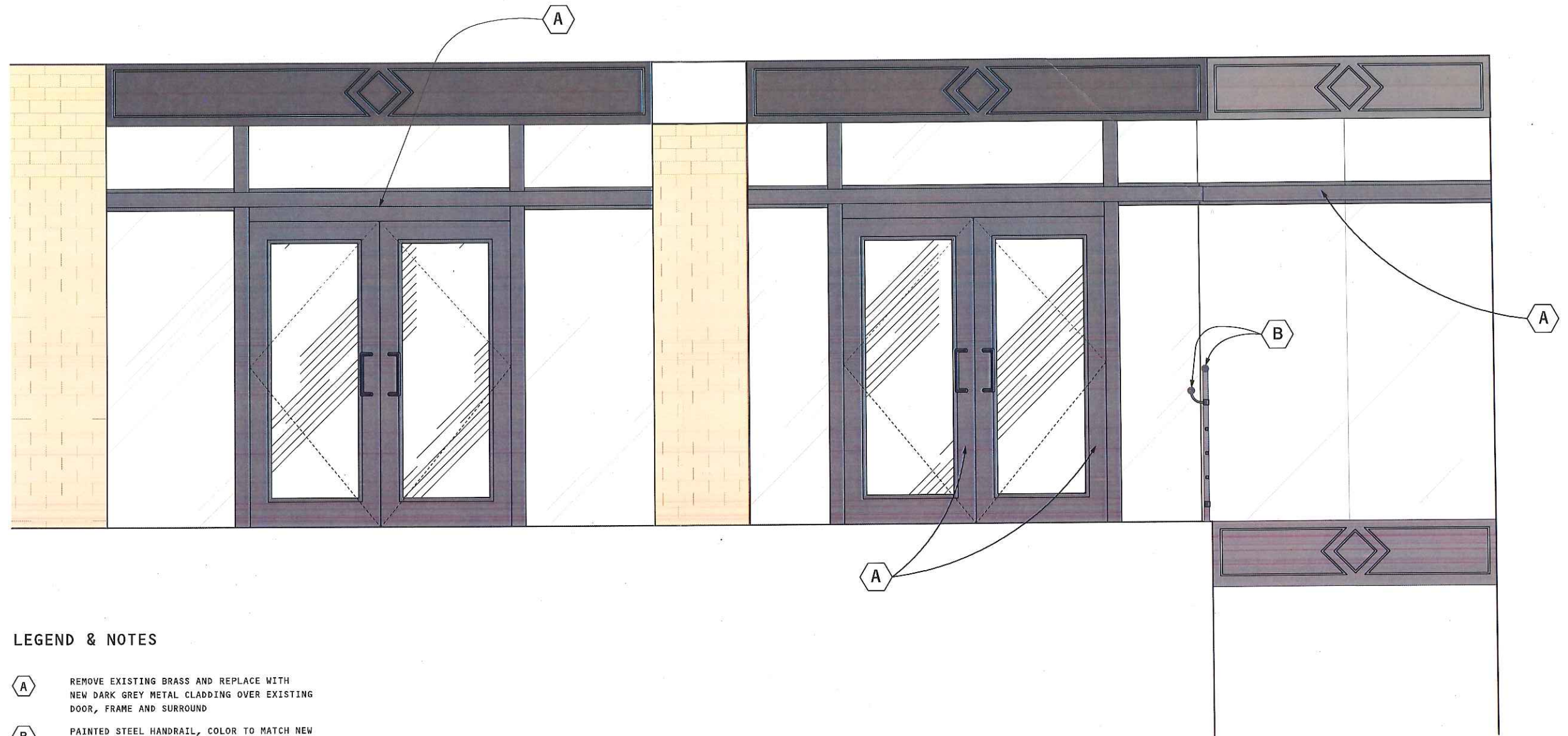
EXISTING ELEVATIONS _ 253 SUMMER STREET

BOSTON MA 02210

MARCH 2017

STORE ENTRY

LOBBY ENTRY



LEGEND & NOTES

- A** REMOVE EXISTING BRASS AND REPLACE WITH NEW DARK GREY METAL CLADDING OVER EXISTING DOOR, FRAME AND SURROUND
- B** PAINTED STEEL HANDRAIL, COLOR TO MATCH NEW METAL CLADDING

NO ADDITIONAL WORK IS PROPOSED BEYOND RECLADDING EXISTING SURFACES AND CHANGING BRASS HANDRAIL

