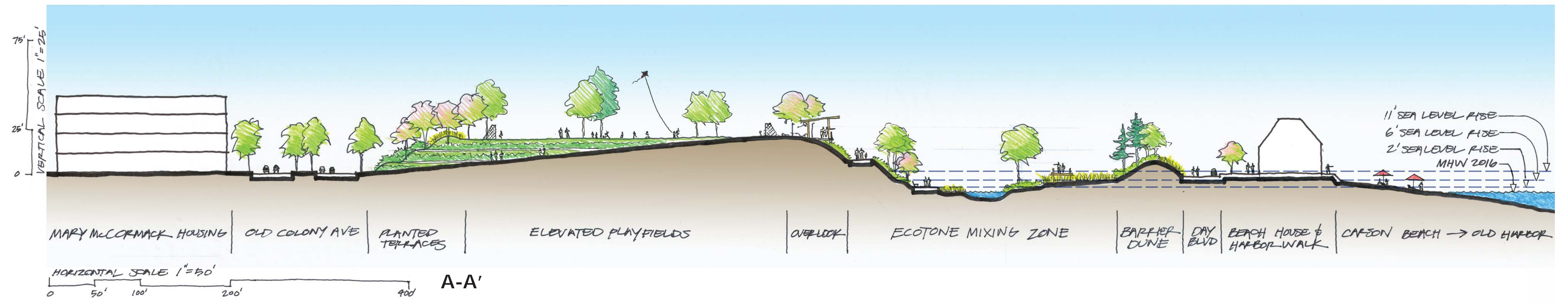
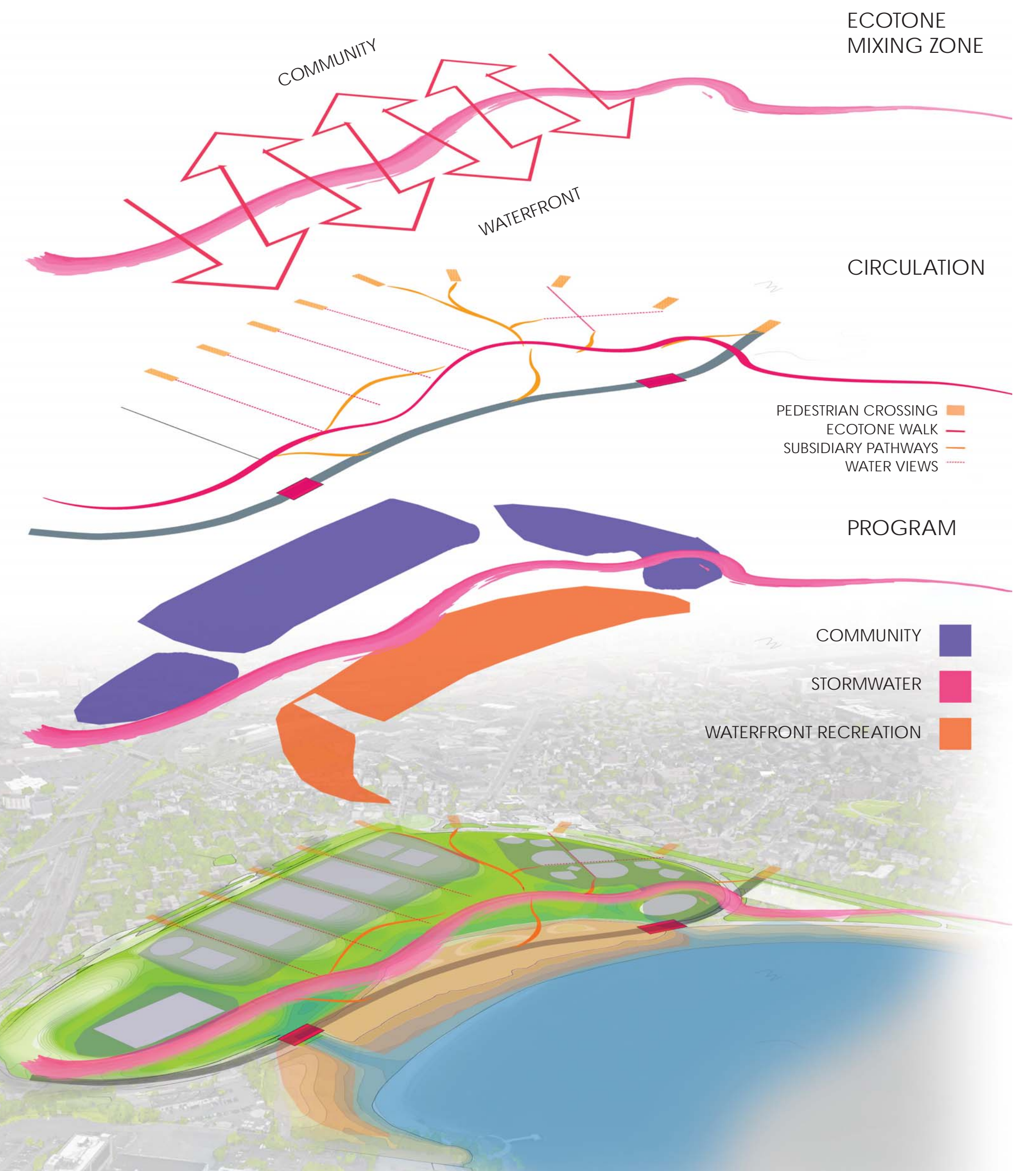


MOAKLEY PARK

THE URBAN ECOTONE



The unique scale and location of Moakley Park presents an opportunity to create a space that functions on two levels – as a vital neighborhood amenity for the surrounding communities and a major regional recreational center for the City of Boston – while showcasing the ability of a designed landscape to create inspirational, resilient spaces that serve as a catalyst for social and ecological engagement.



NATURE PLAY



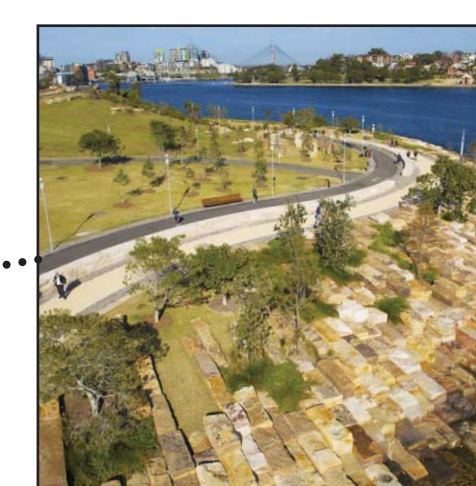
DUNES + BERMS



MIXING ZONE



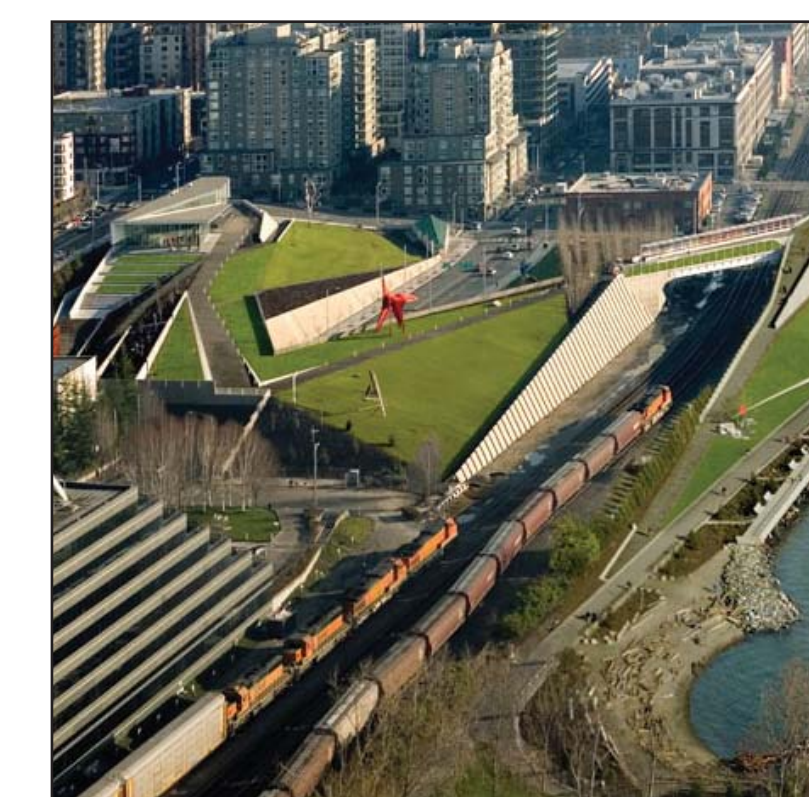
TIDAL WALK



HARBOR WALK



MONUMENTAL PEDESTRIAN BRIDGE



DRAMATIC GRADING
SEATTLE SCULPTURE PARK



PROMINENT PEDESTRIAN CROSSINGS



BOLD CONTINUOUS ELEMENT
QINHUANGDAO, RED RIBBON PARK



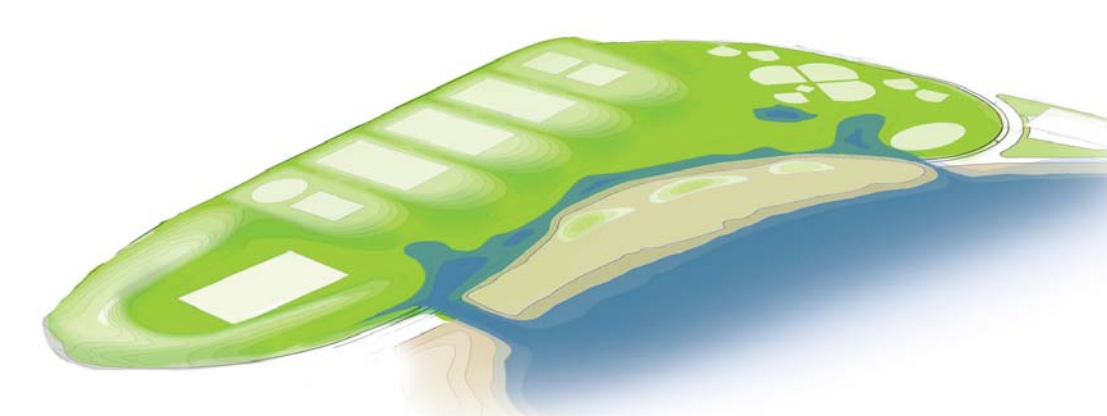
CONSTRUCTED WETLAND
SAN FRANCISCO CRISSY FIELD



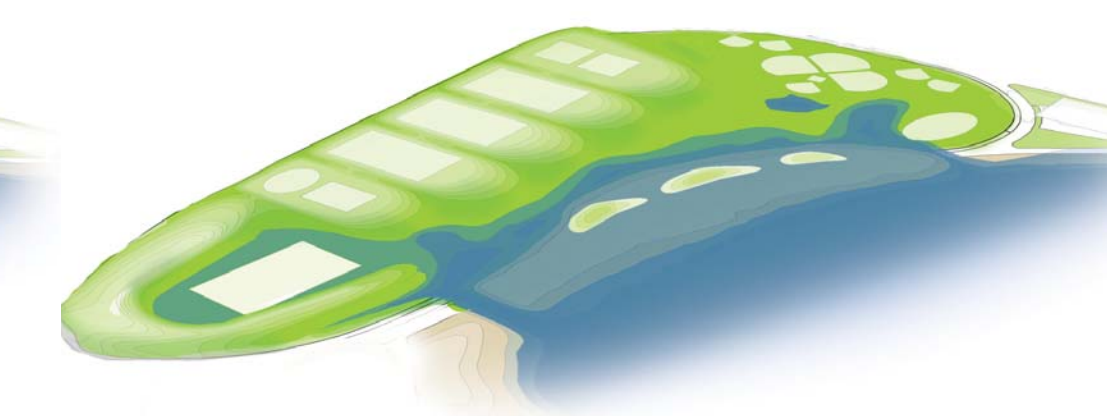
OPEN SPACE WATER STORAGE



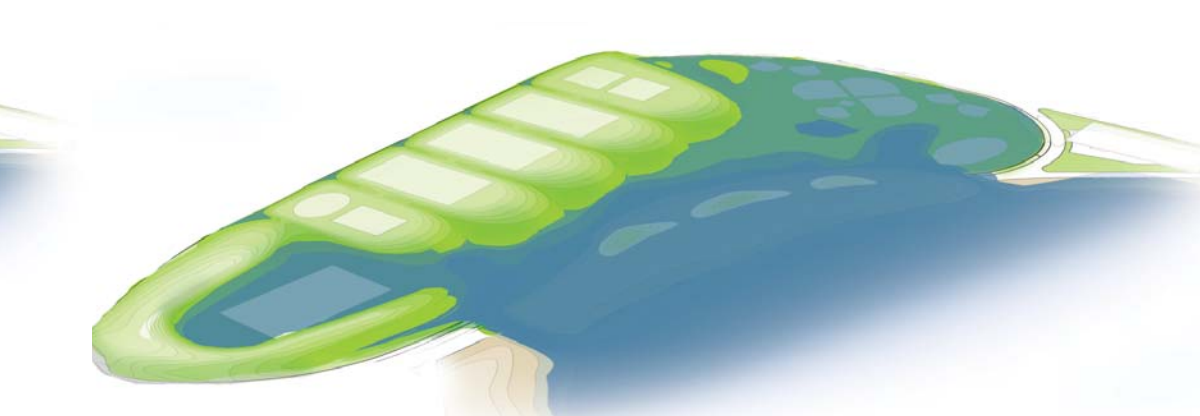
HARBOR WALKWAY



2-FOOT SEA LEVEL RISE



6-FOOT SEA LEVEL RISE



11-FOOT SEA LEVEL RISE