



Improvements to Franklin Park Pathways - Phase IV

Informational Briefing - Nov. 17, 2016



meeting agenda

Introductions

- Boston Parks and Recreation Department
- Stantec Planning and Landscape Architecture

Review of Past Improvements

- Phase I Improvements - work completed 2012
- Phase II Improvements - work completed 2015
- Phase III Improvements - currently underway; Fall 2016
- Funding

Overview of Current Phase IV

- \$1.4 million construction budget
- Spring/Early Summer 2017

Community Input

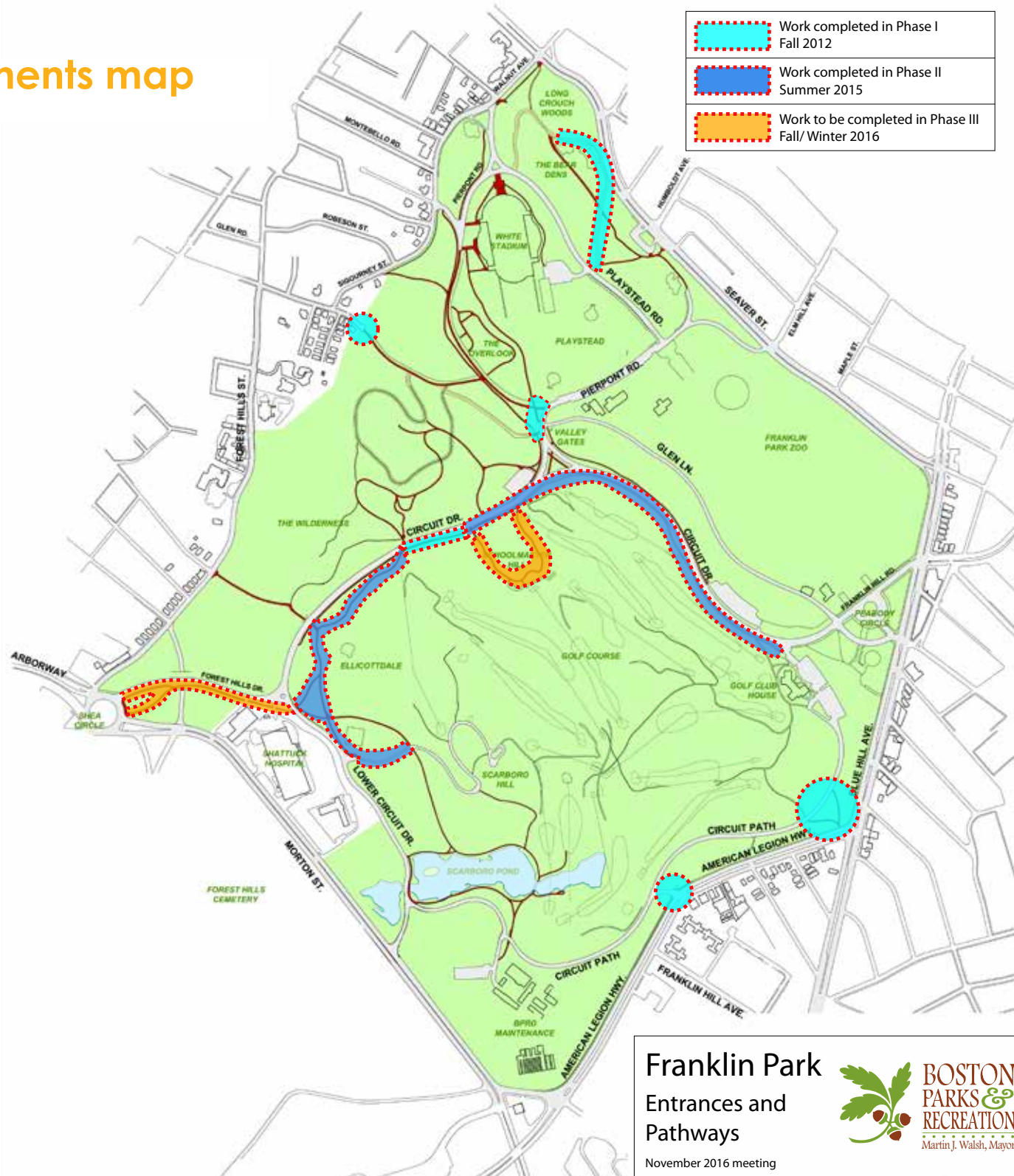
- questions, concerns and feedback

introductions

BPRD

Stantec

Improvements map



Phase II



before



after

Phase II



before

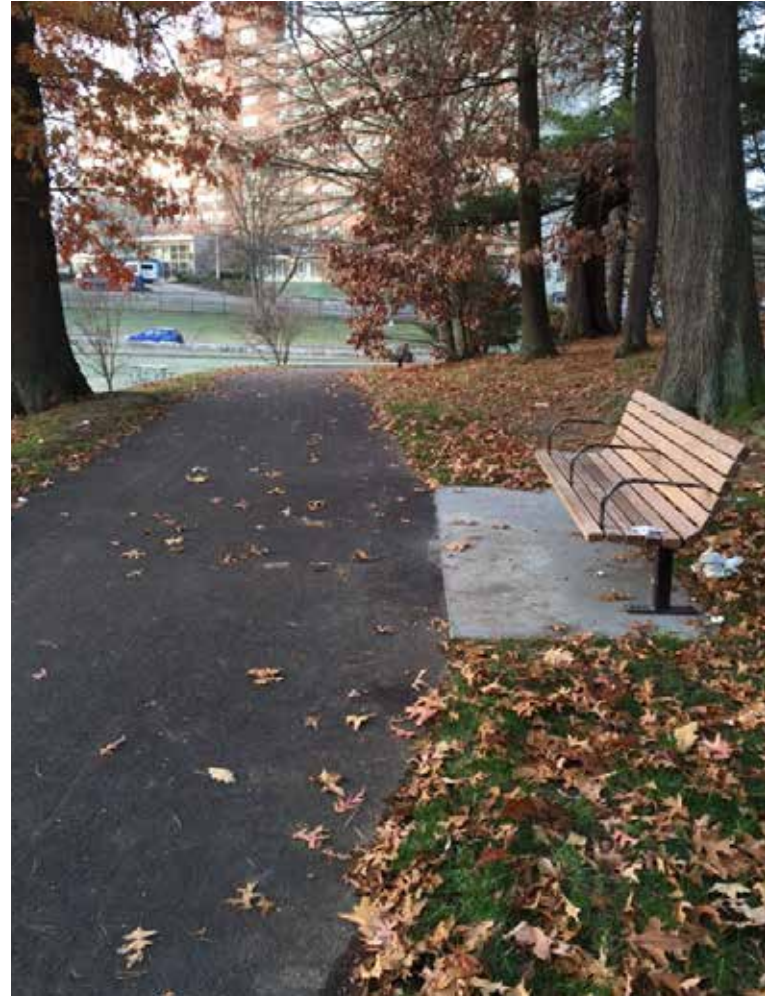


after

Phase II



before



after

Phase II



before

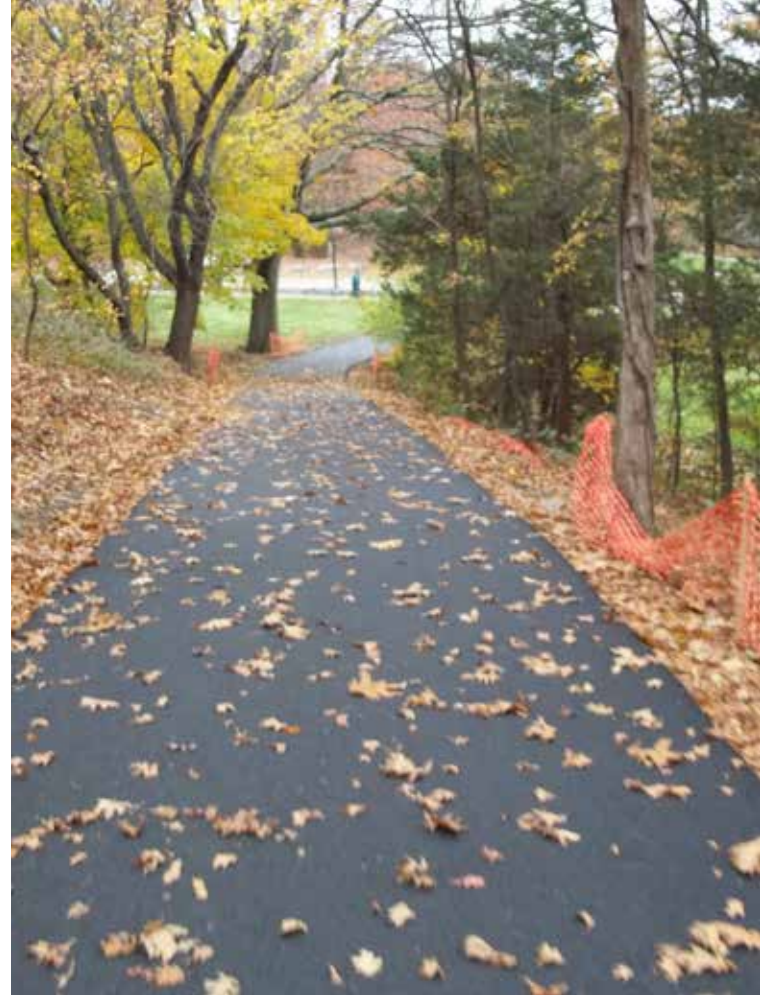


after

Phase III



before



after

Phase III



before



after

Phase III



before



after

Phase III



before



after

schedule

Phase IV Design
-Fall/Winter 2016-2017




Phase IV Construction
-Spring/Early Summer 2017

Phase IV Improvements

overall plan



Key

-  Path to be renovated
-  Entry to be renovated
-  Picnic grove to be renovated

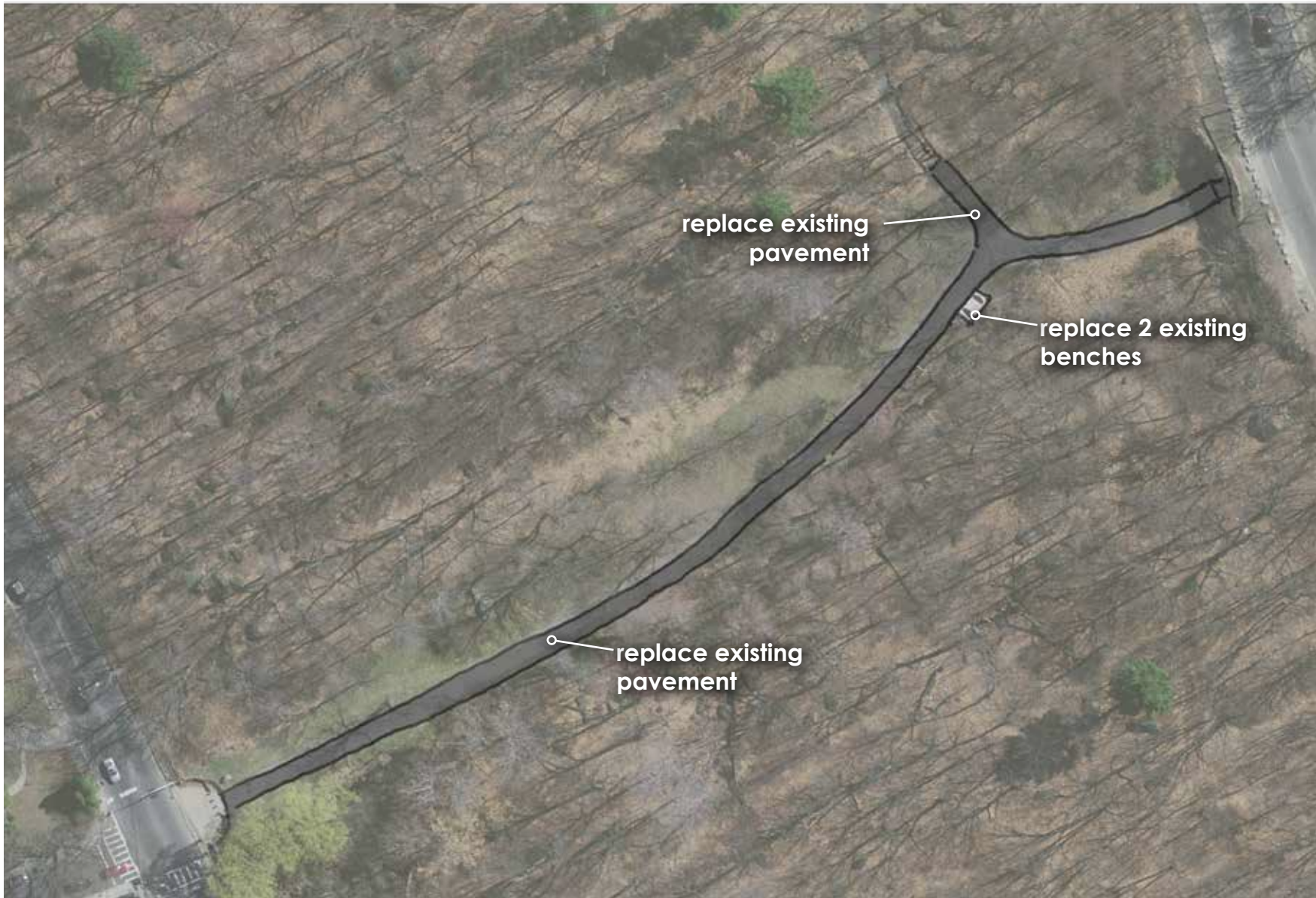
Ellicott Arch Path

existing conditions



Ellicott Arch Path

proposed plan



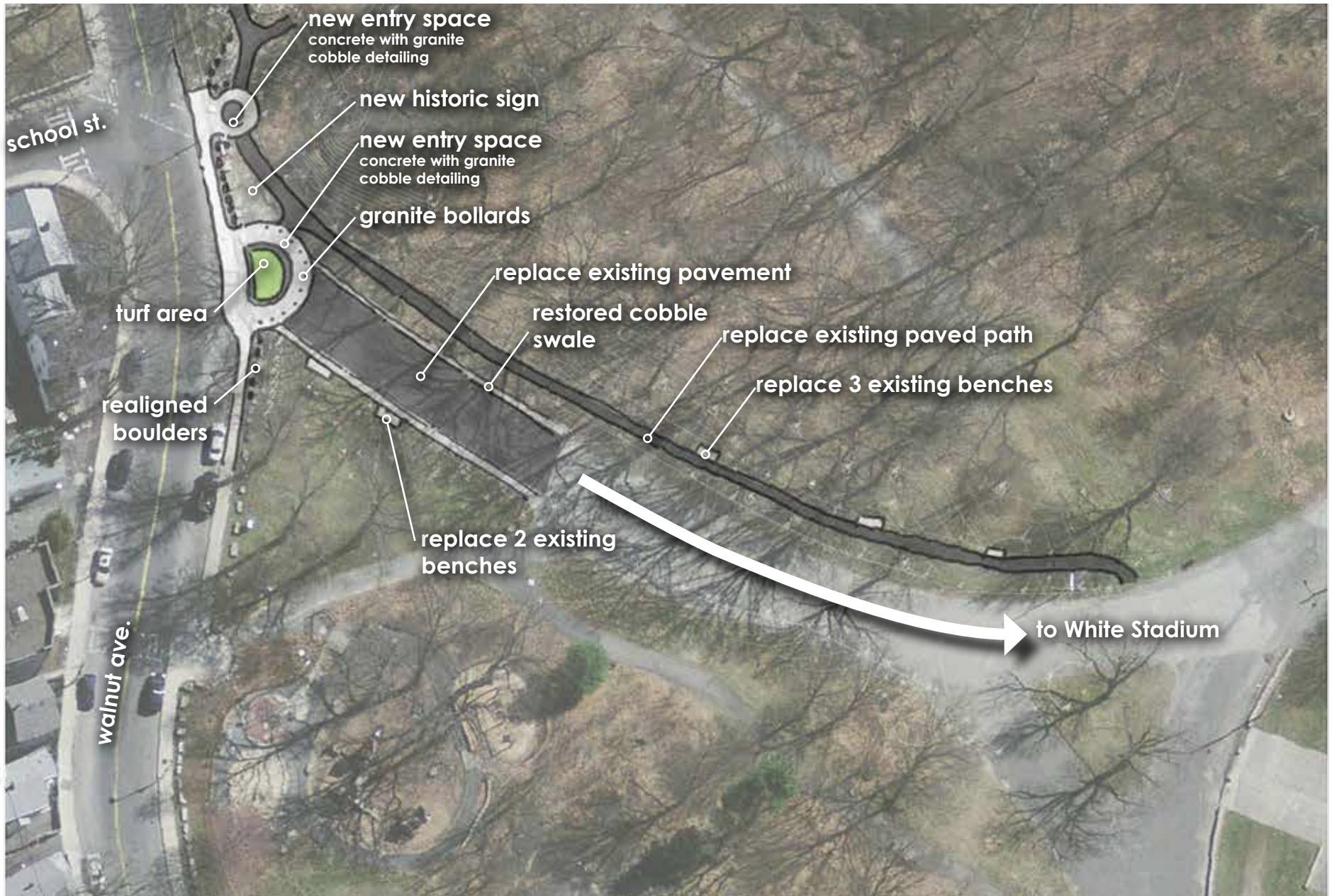
N. Walnut Entry

existing conditions



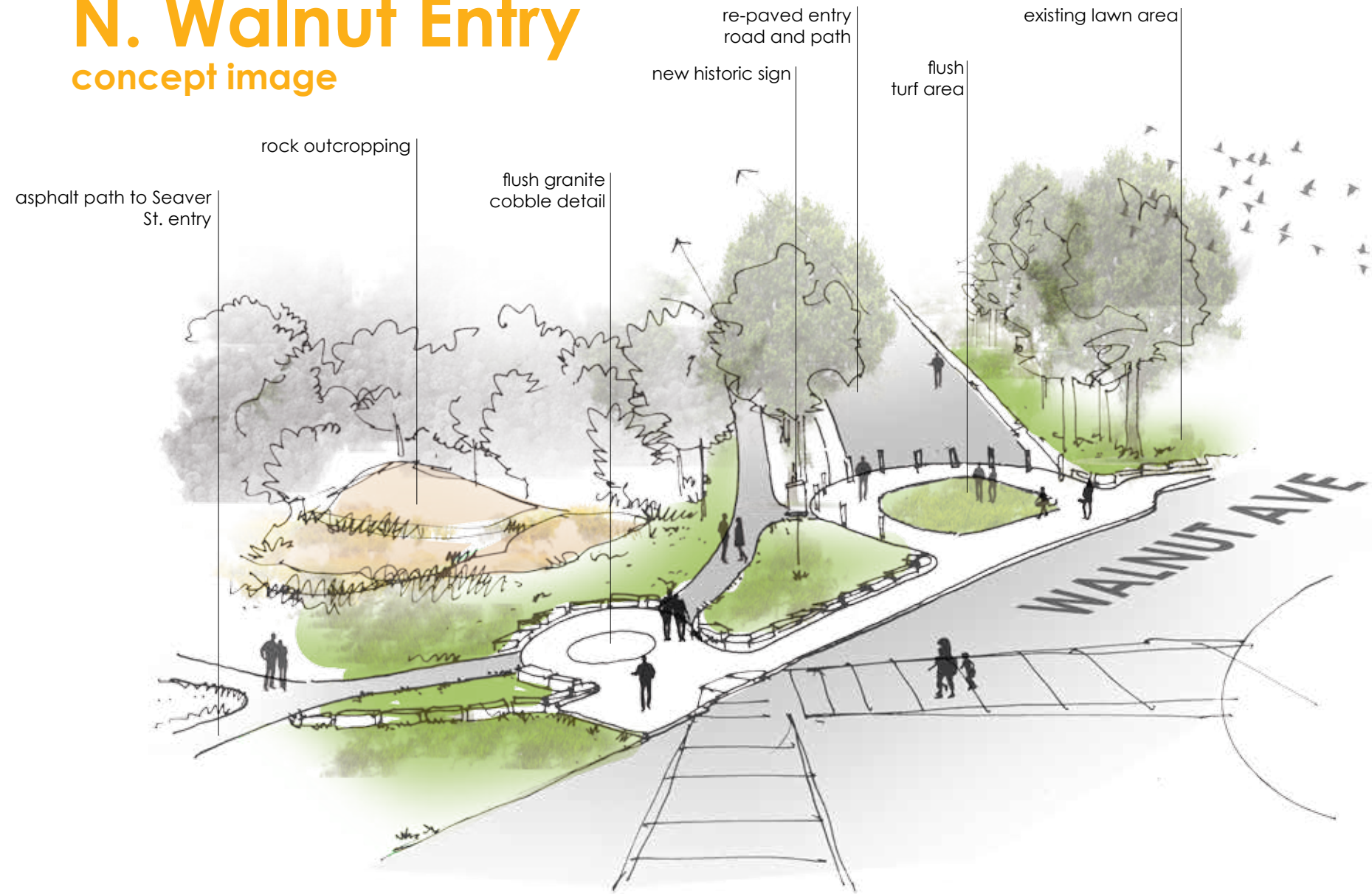
N. Walnut Entry

proposed plan



N. Walnut Entry

concept image



N. Walnut Entry

concept image

re-paved entry
road and path

existing lawn area

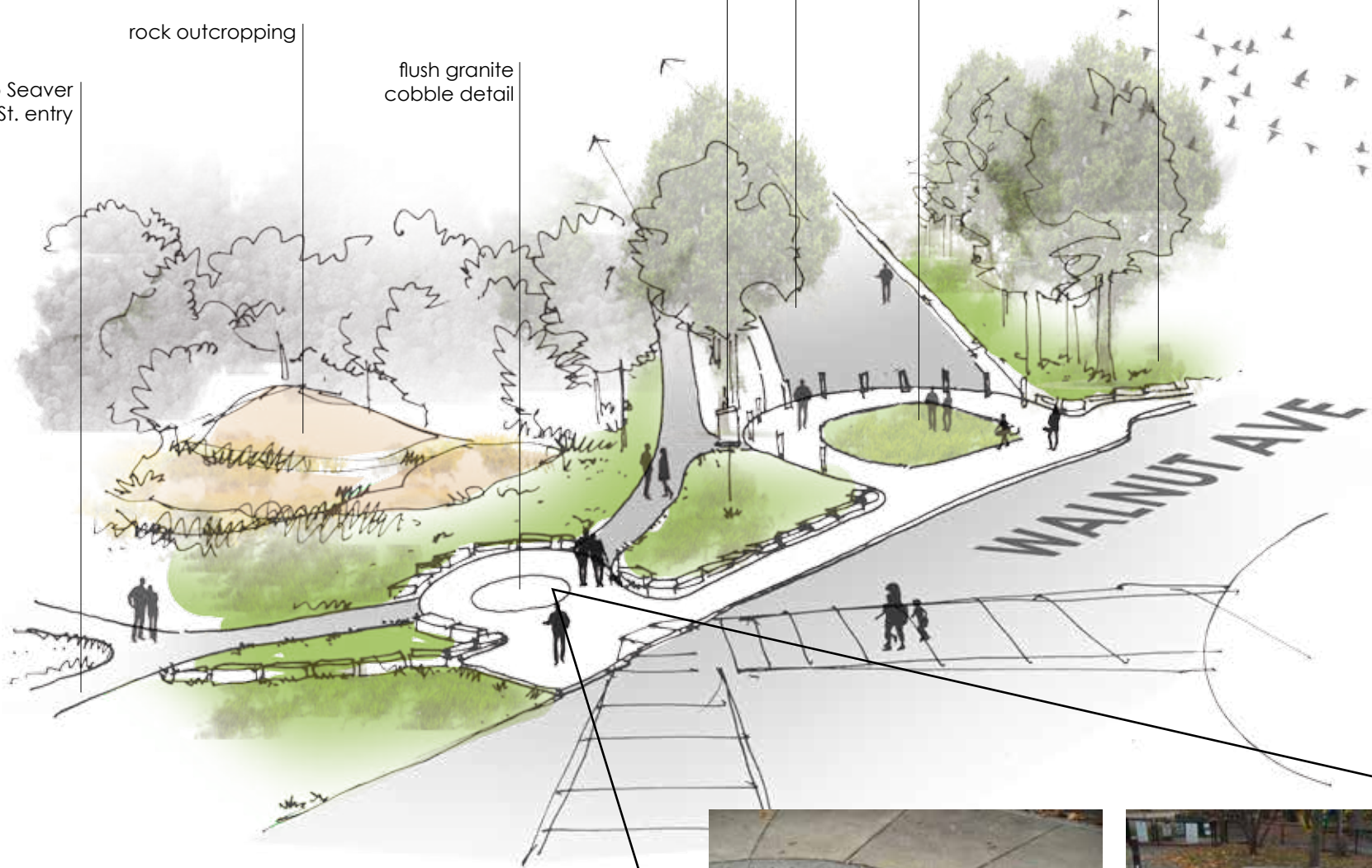
new historic sign

flush
turf area

rock outcropping

flush granite
cobble detail

asphalt path to Seaver
St. entry



Walnut-Seaver Entry

existing conditions



Walnut-Seaver Entry

proposed plan



Pierpont Picnic Grove

existing conditions



Pierpont Picnic Grove

proposed plan



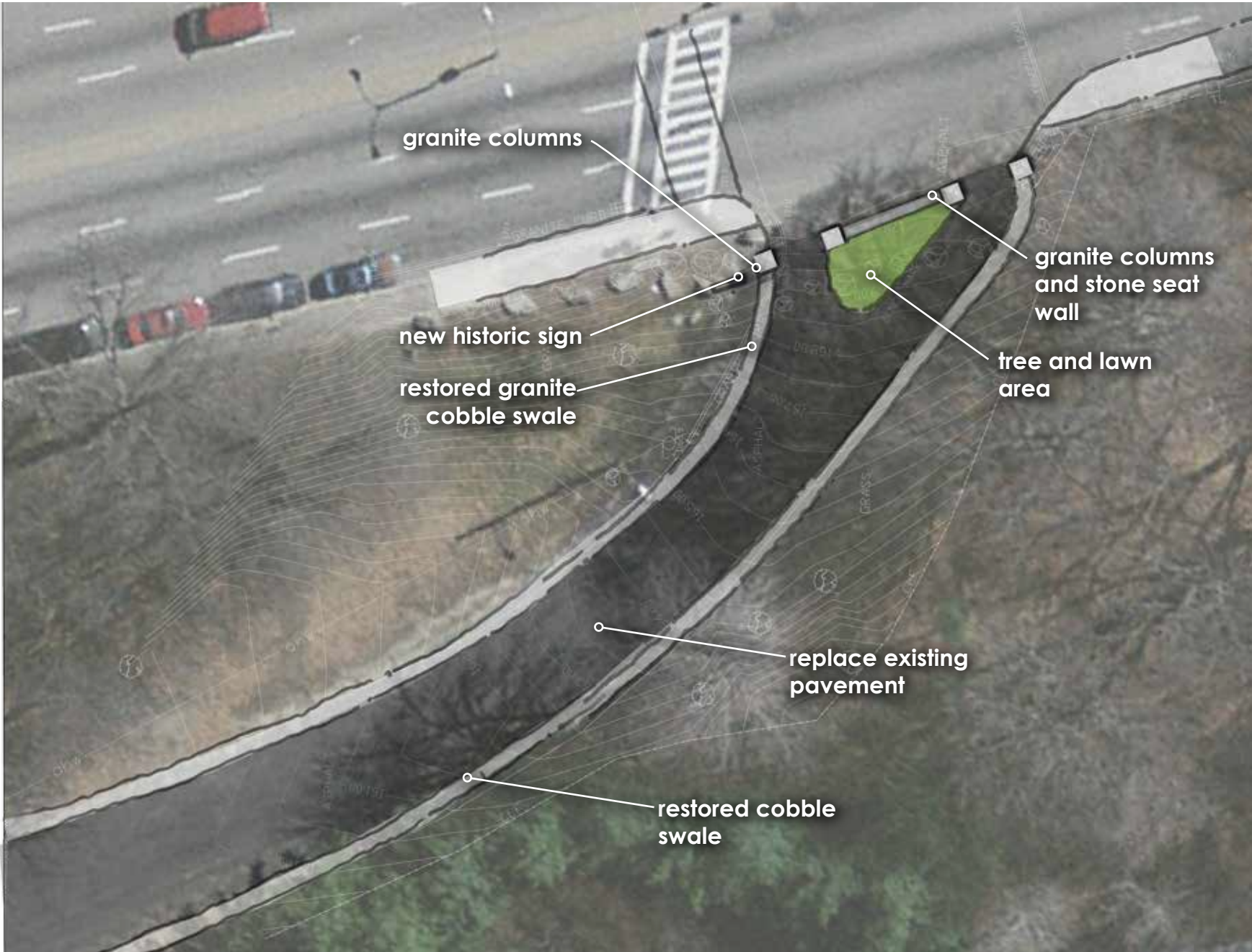
Seaver St. Entry

existing conditions



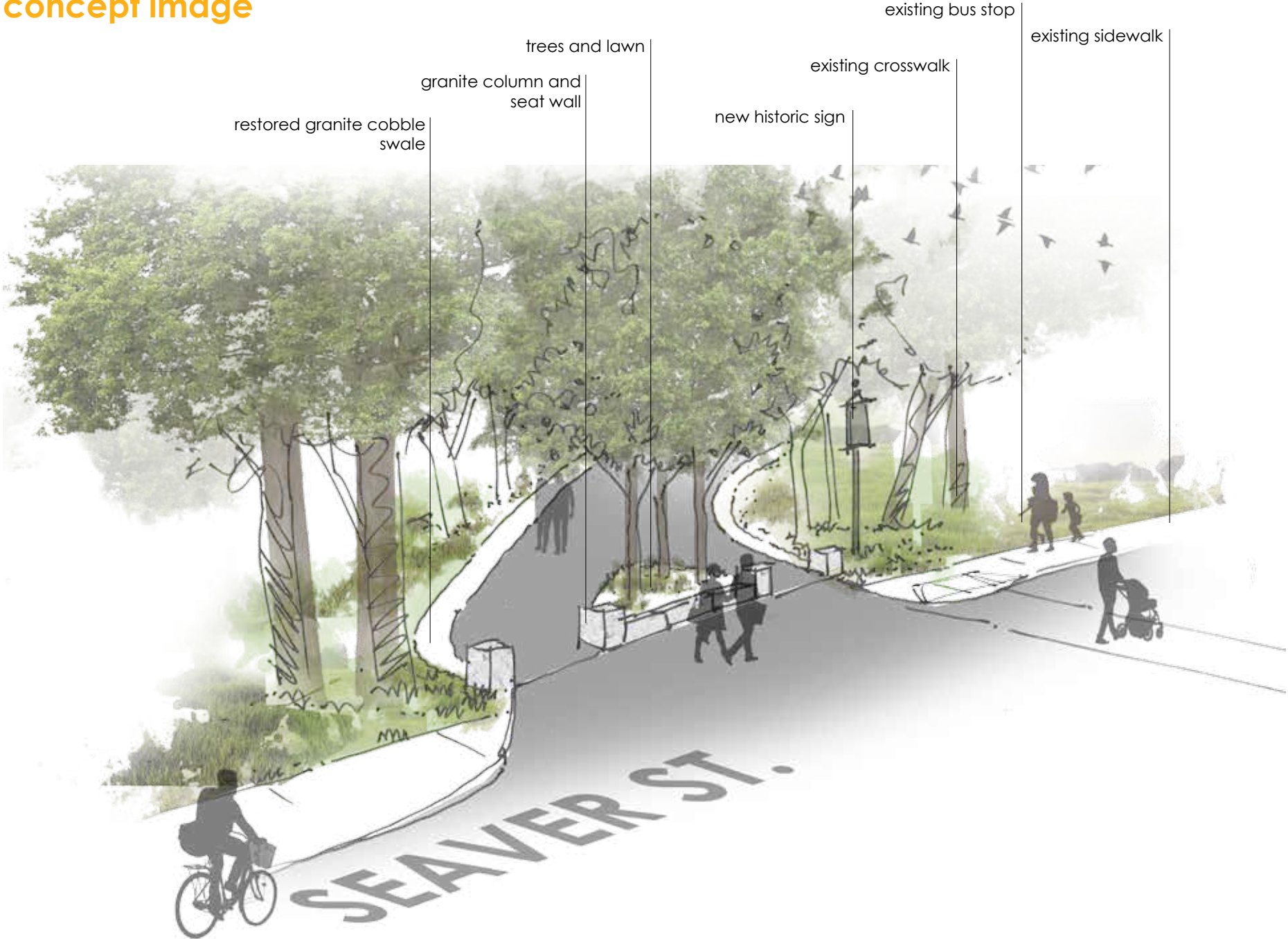
Seaver St. Entry

proposed plan



Seaver St. Entry

concept image



Seaver St. Entry

material options



Seaver St. Entry

material options



Seaver St. Entry

material options



Seaver St. Entry

material options



Seaver St. Entry

material options



questions? comments?