





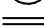




Select Oyster Bar Restaurant

899 BOYLSTON

GLOUCESTER STREET

BOYLSTON STREET

LEGEND

-  BTD Utility Cover
-  Curb Side Ramp - Slip Resistant Surface
-  Traffic Light
-  Water
-  Bike Rack
-  VALV60 Gas
-  Resident Parking Sign
-  VISUALLY SEEN BASEMENT
-  APPROXIMATE OF WALL VAULT WALLS AS PER JAMES TOWN

899 Boylston Ave
JAMESTOWN

Boston, MA 02109

© Silverman Trykowski Associates, Inc. expressly reserves its common law copyright and other property rights in these plans. These plans are not to be reproduced, changed or copied in any form or manner whatsoever nor are they to be assigned to any third party without first obtaining the expressed written permission and consent of Silverman Trykowski Associates, Inc.



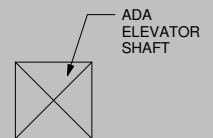
125 Broad Street
7th Floor
Boston, MA 02110
t: 617.426.1501
f: 617.426.5491
www.sta-design.com



No.	Description	Date

Scale	As indicated
Project Number	2015.92
Date	3/3/2016
Drawn by	ZB
Checked by	TT

A-101
Vault Location



PUBLIC WALKING ZONE

CONCRETE PAVEMENT WITH SAW CUT JOINTS

4 1/2" X 9" PERMIABLE PAVERS COLOR M1185 (TUDOR FINISH)

EXISTING GRANITE STREET MARKER TO BE SALVAGED AND SET INTO NEW CONCRETE SIDEWALK

6' WIDE FURNISHINGS ZONE

7' - 11 15/32"

1 Side Walk
1/4" = 1'-0"

BTD Utility Cover

City Bicycle Rack

Sidewalk

Traffic Light

BTD Utility Cover

Curb Side Ramp - Slip Resistant Surface

Visually Seen Basement

Resident Parking Sign

Approximate of Wall Vault as Per James Town

Water

Gas

Utility Cover

Consultant

**PROGRESS SET
NOT FOR CONSTRUCTION**

No.	Date	Description	By

SIDEWALK VAULT WATERPROOFING

**899 BOYLSTON STREET
BOSTON, MA**

Project

EXISTING CONDITIONS

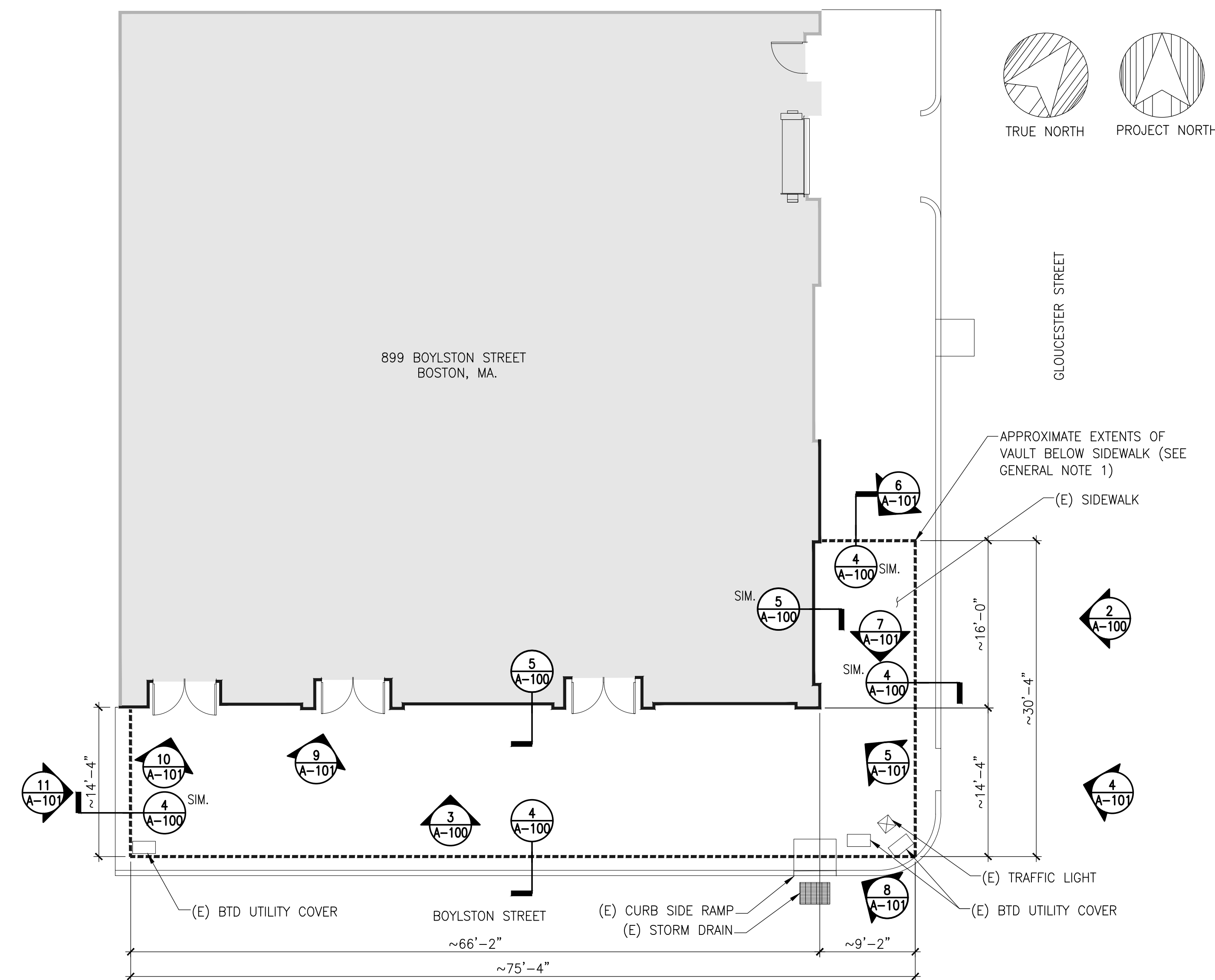
Drawing Title

Project No. 150481.01	Checked FJS	Date OCT 2016
Drawn AMB	Approved GGC	Scale AS NOTED

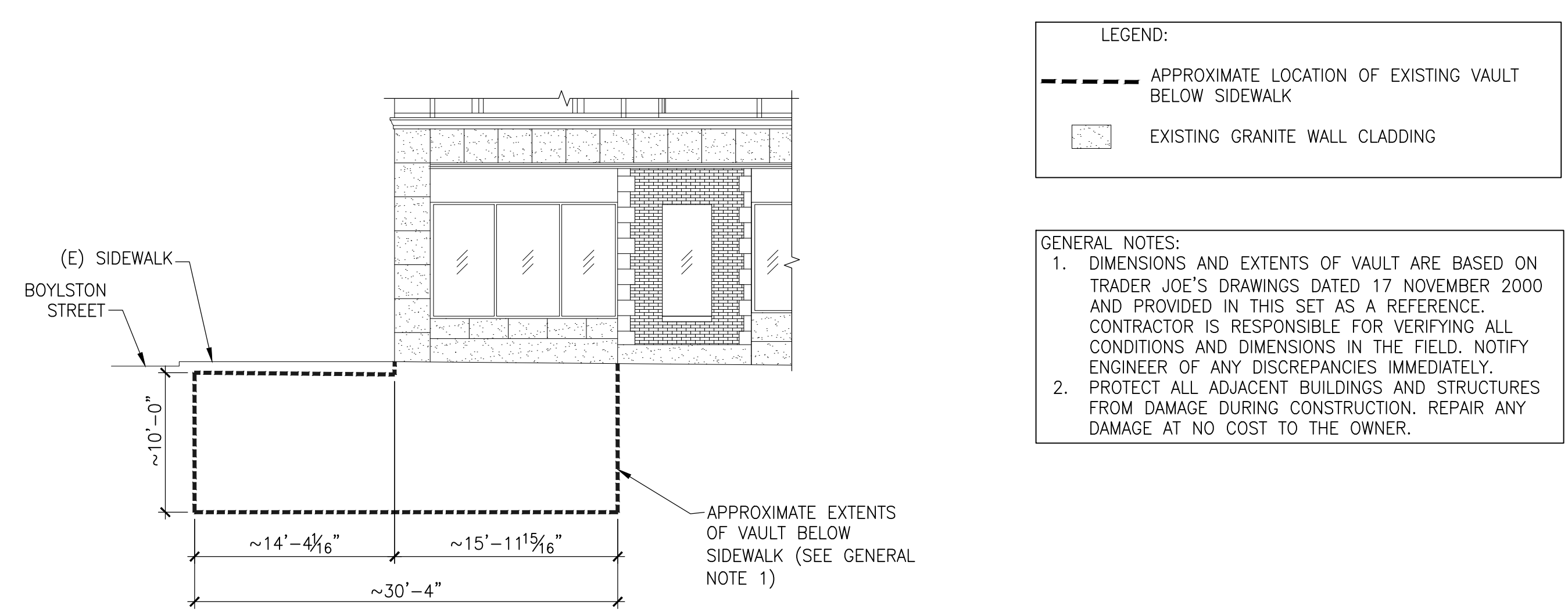
Drawing No.

A-100

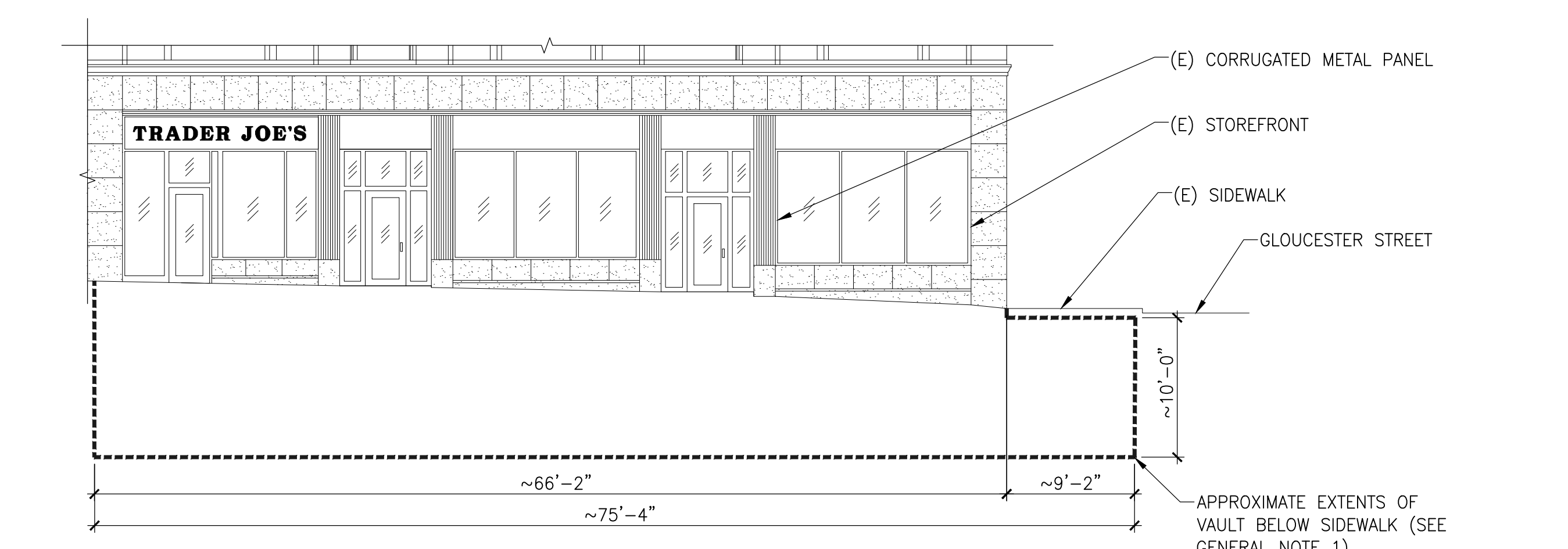
Seal



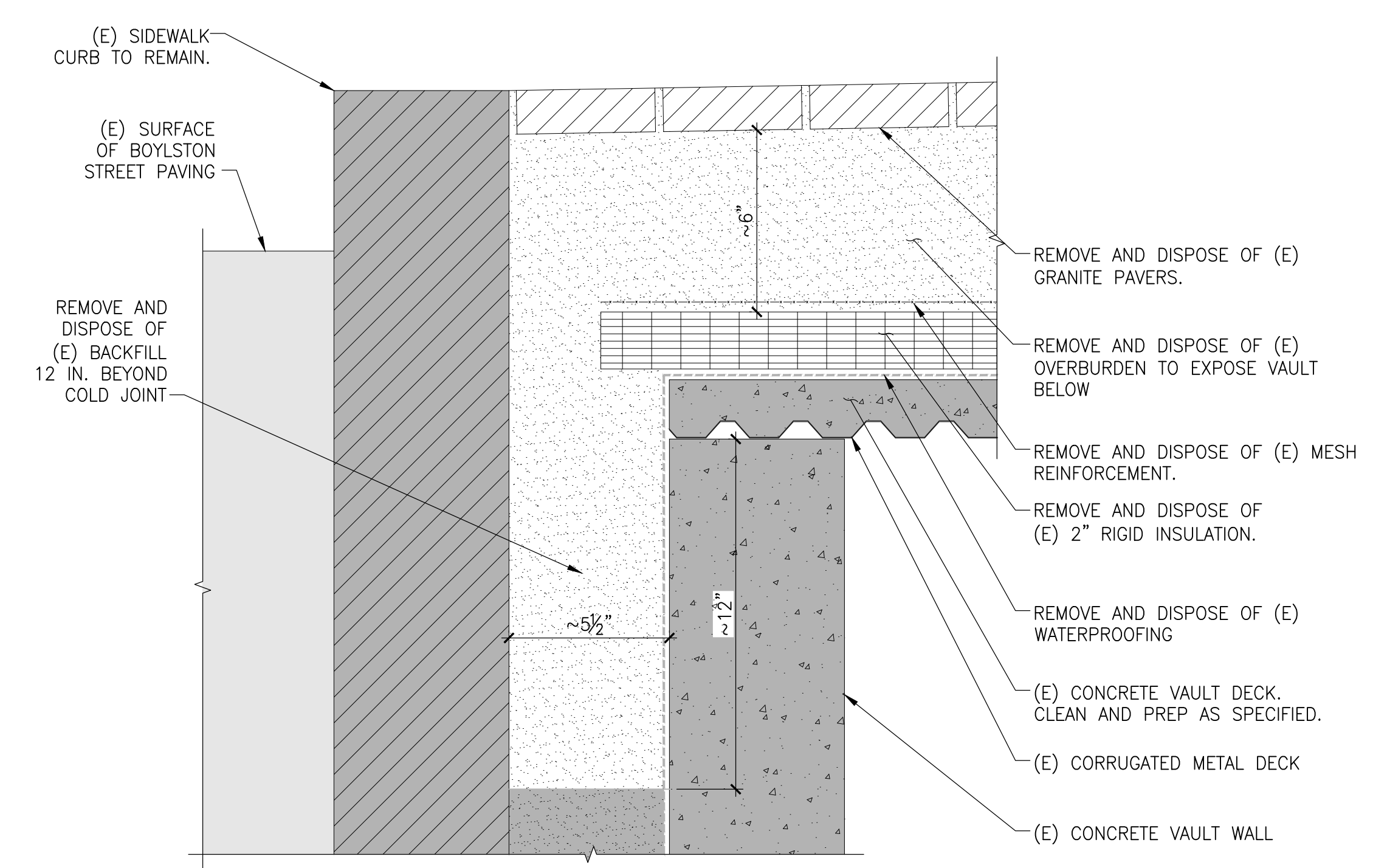
1 SITE PLAN (EXISTING CONDITIONS)
ALL DIMENSIONS ARE APPROXIMATE, CONTRACTOR TO VERIFY IN FIELD NTS



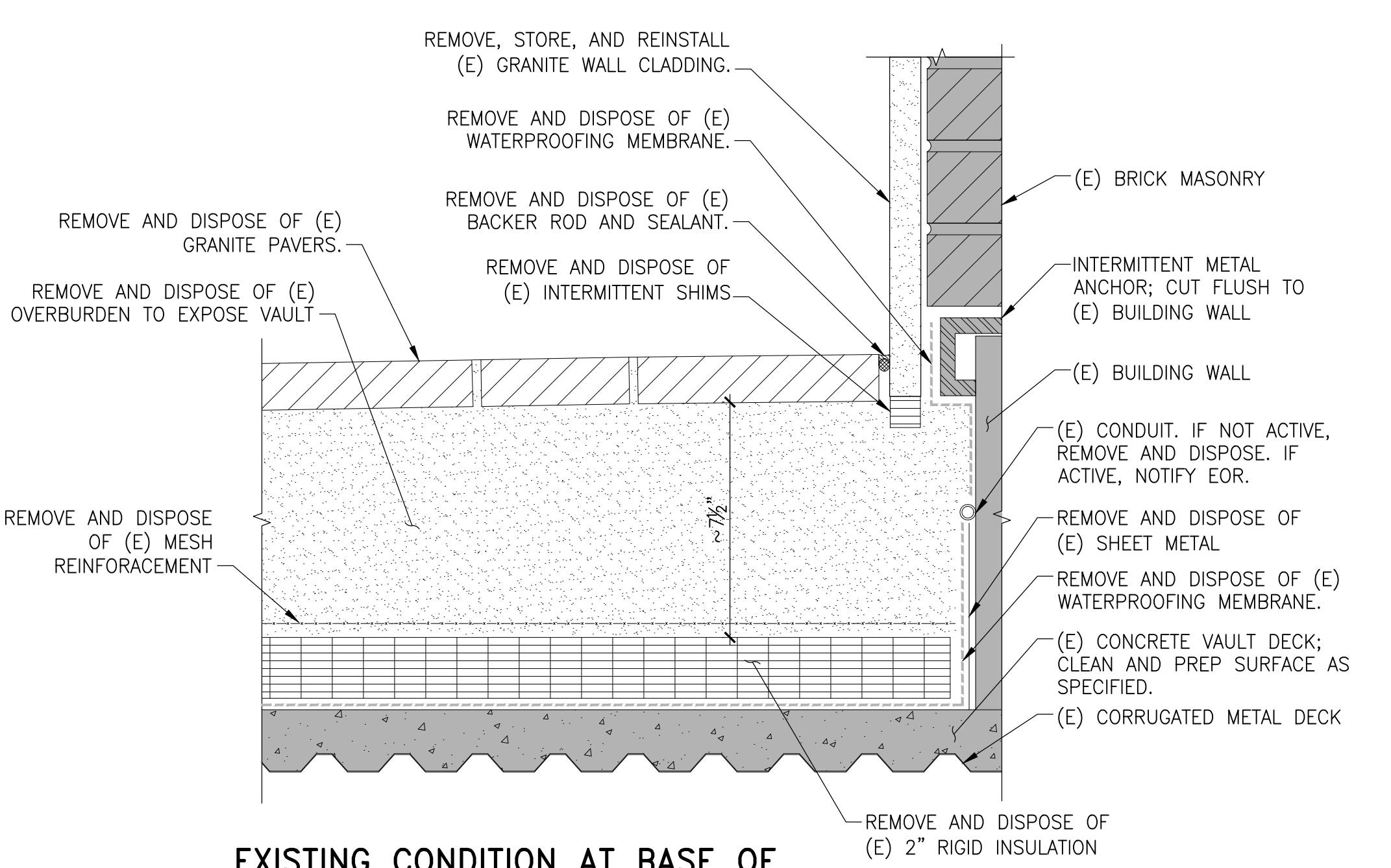
2 EAST ELEVATION (GLOUCESTER STREET) NTS



3 SOUTH ELEVATION (BOYLSTON STREET)
ALL DIMENSIONS ARE APPROXIMATE, CONTRACTOR TO VERIFY IN FIELD NTS



4 EXISTING CONDITION AT VAULT EDGE - DEMOLITION DETAIL NTS



5 EXISTING CONDITION AT BASE OF BUILDING WALL AT COLUMN NTS

Consultant

**PROGRESS SET
NOT FOR CONSTRUCTION**

No.	Date	Description	By

**SIDEWALK VAULT
WATERPROOFING**

**899 BOYLSTON STREET
BOSTON, MA**

Project

**PLANS,
ELEVATIONS, AND
PHOTOS**

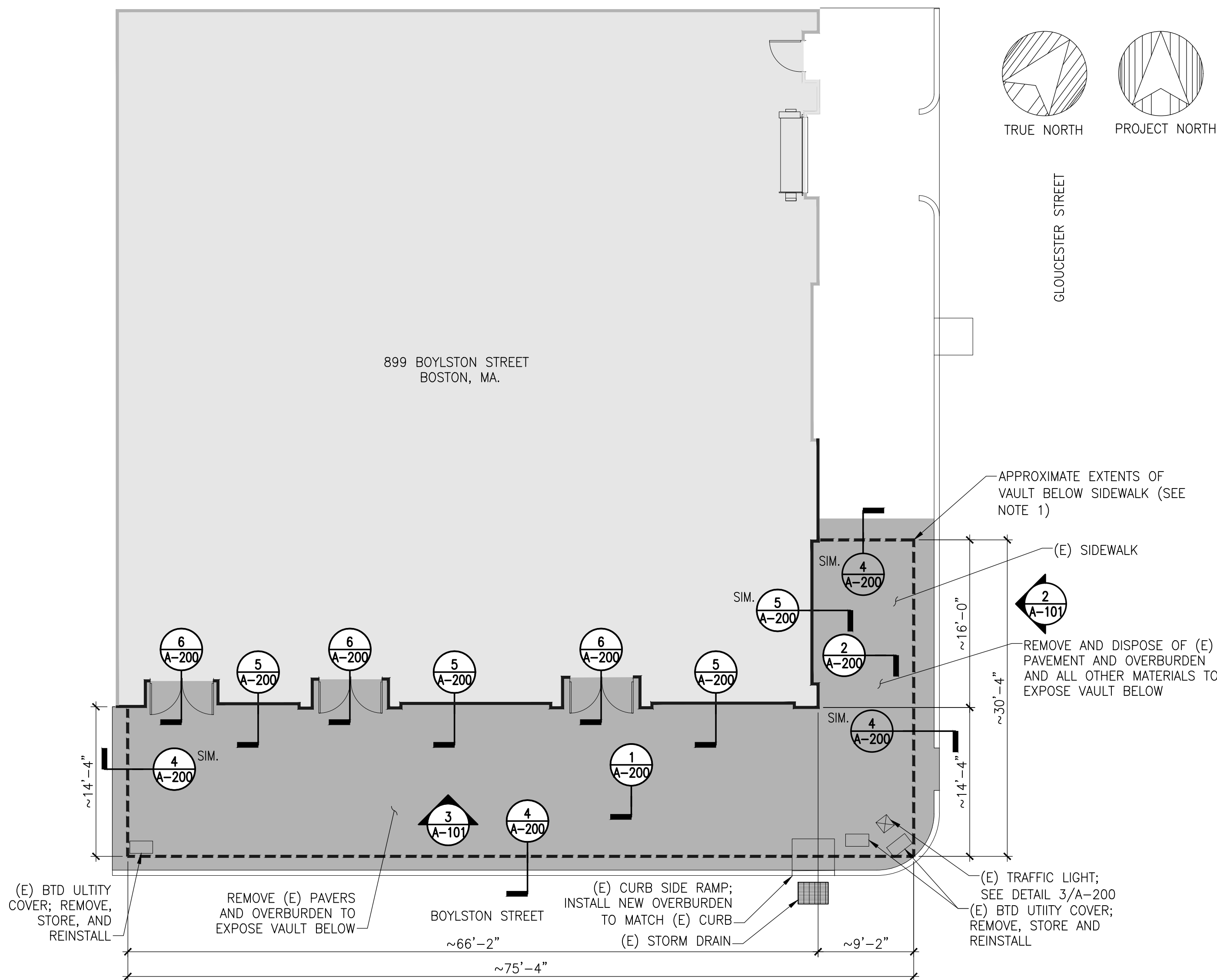
Drawing Title

Project No. 150481.01	Checked FJS	Date OCT 2016
Drawn AMB	Approved GGC	Scale AS NOTED

Drawing No.

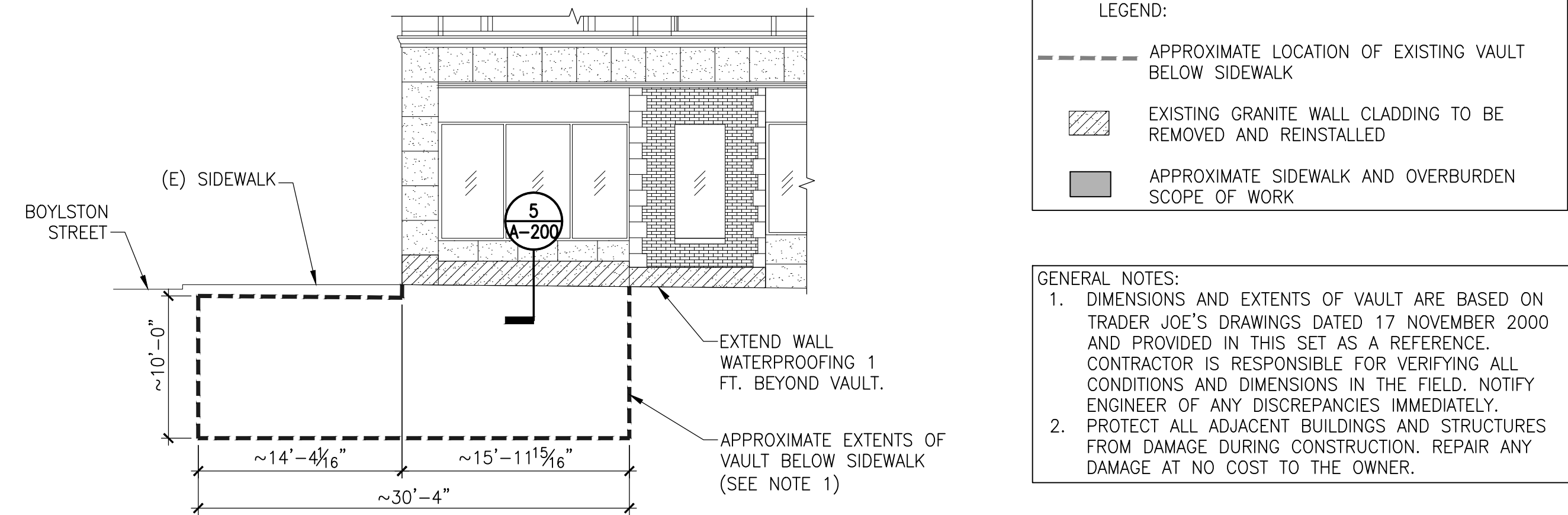
A-101

Seal



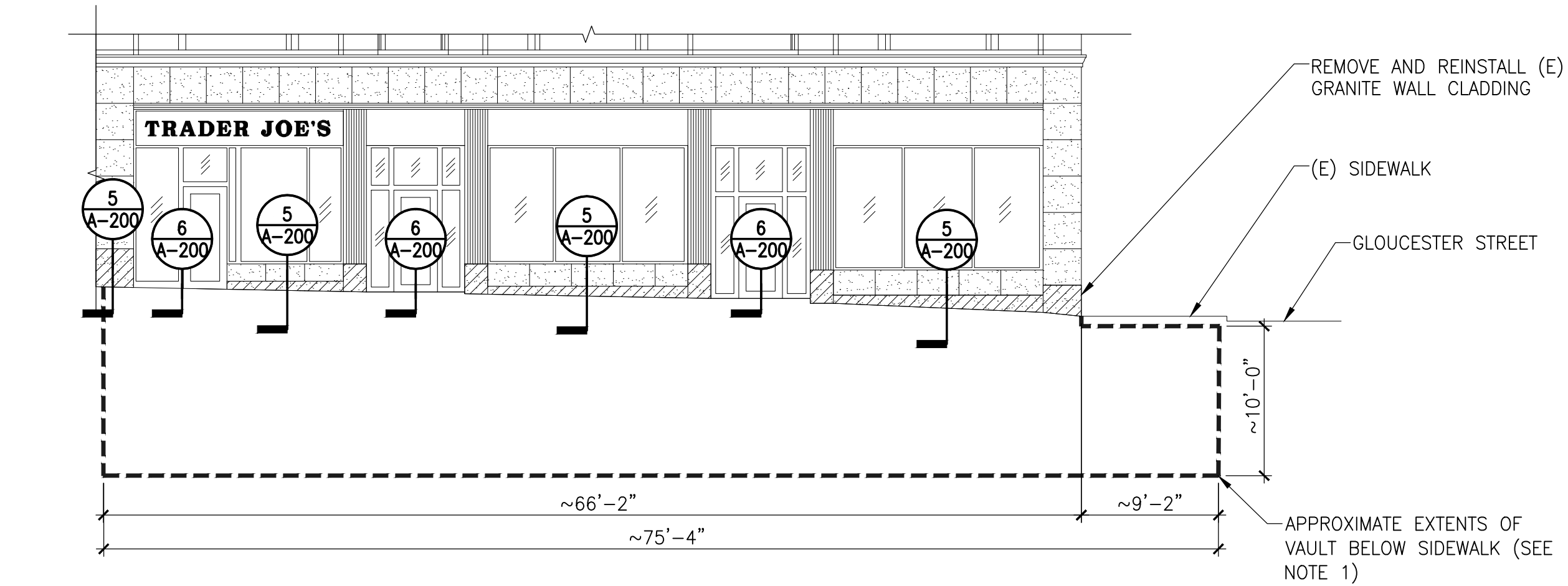
1 SITE PLAN

NTS



2 EAST ELEVATION (GLOUCESTER STREET)

NTS



3 SOUTH ELEVATION (BOYLSTON STREET)

NTS



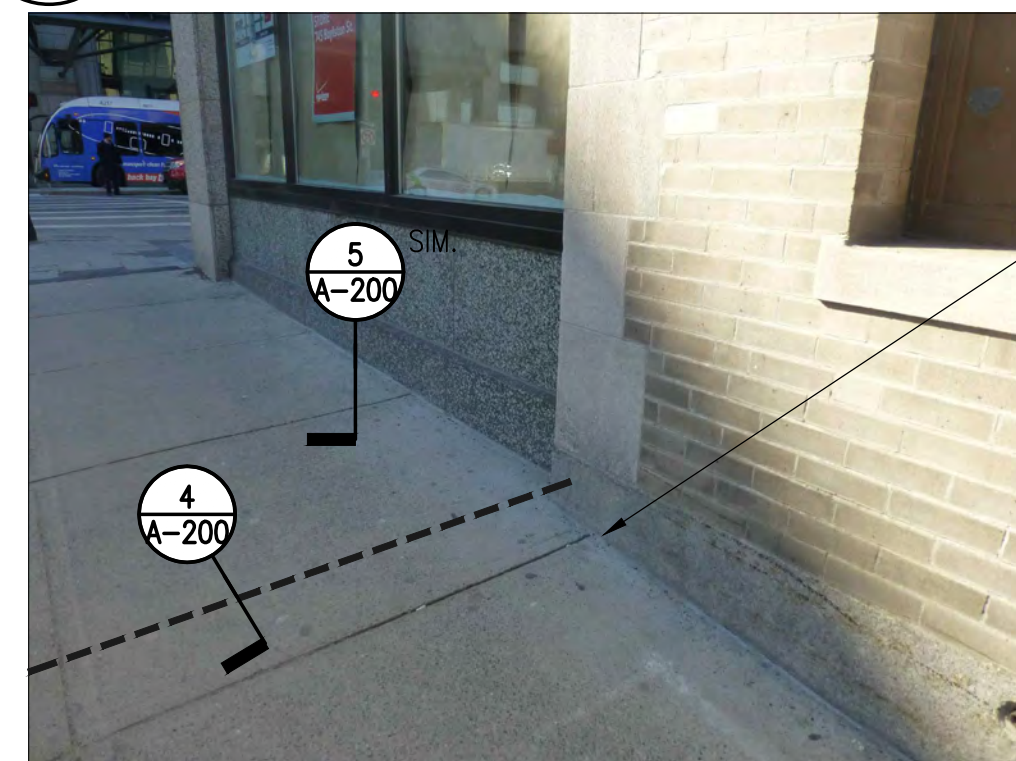
4 899 BOYLSTON STREET

NTS



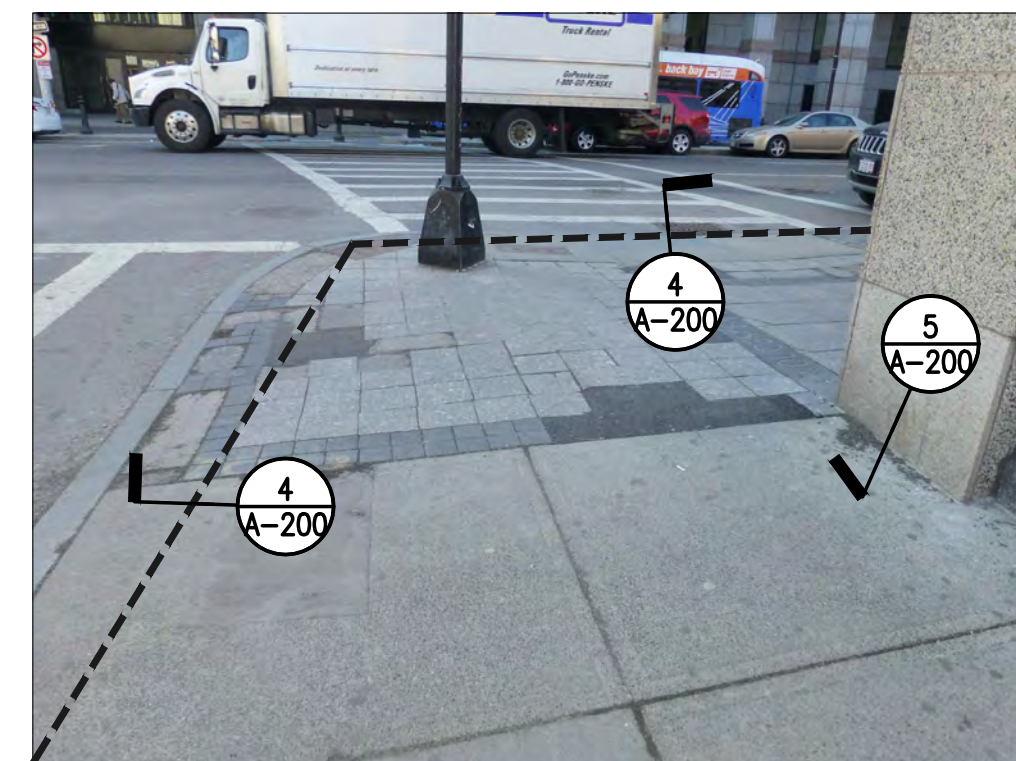
5 EAST ELEVATION BUILDING CORNER

NTS



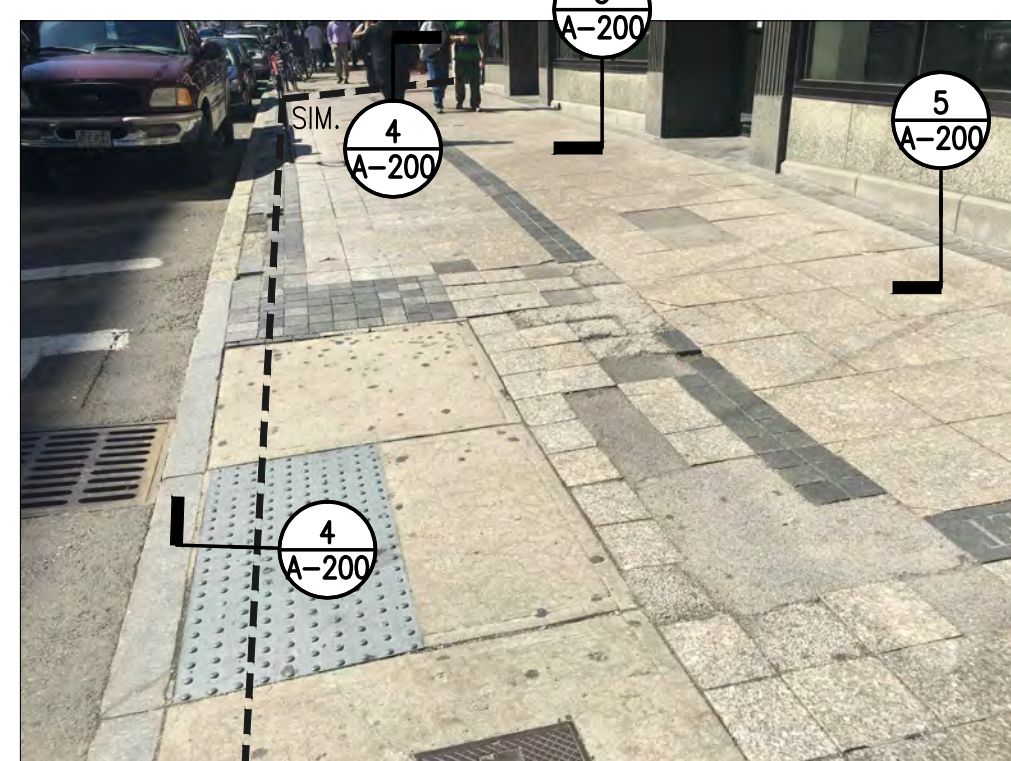
6 EAST ELEVATION BUILDING CORNER

NTS



7 SIDEWALK AT SOUTHEAST BUILDING CORNER

NTS



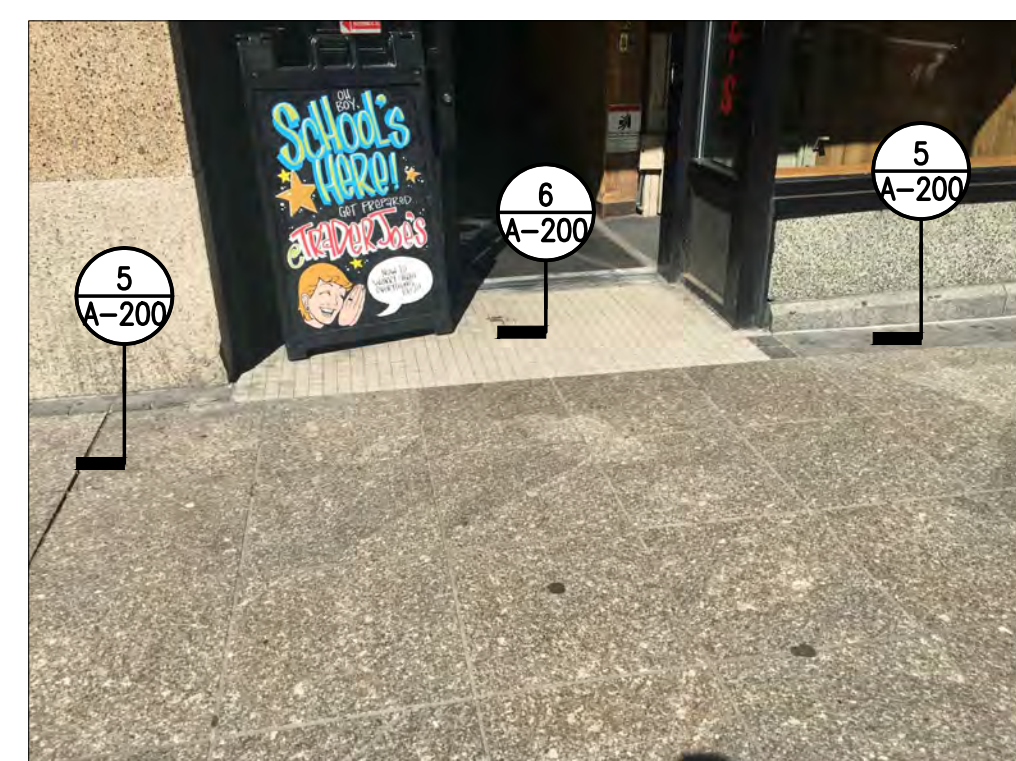
8 BOYLSTON STREET SIDEWALK FROM EAST

NTS



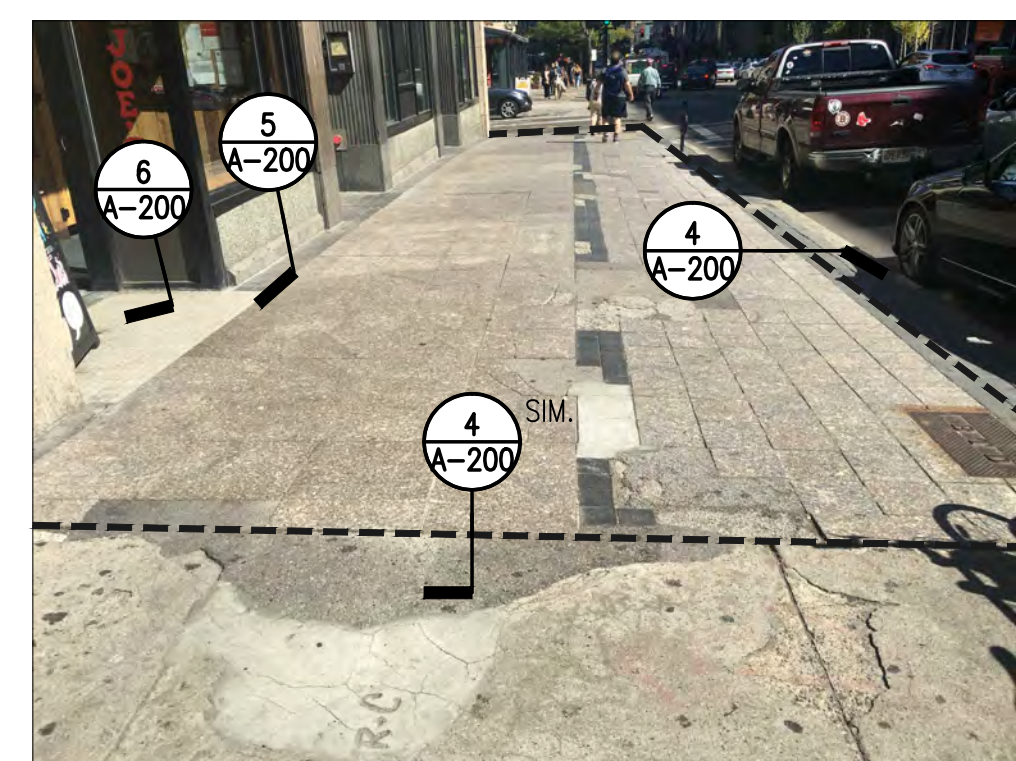
9 ENTRYWAY

NTS



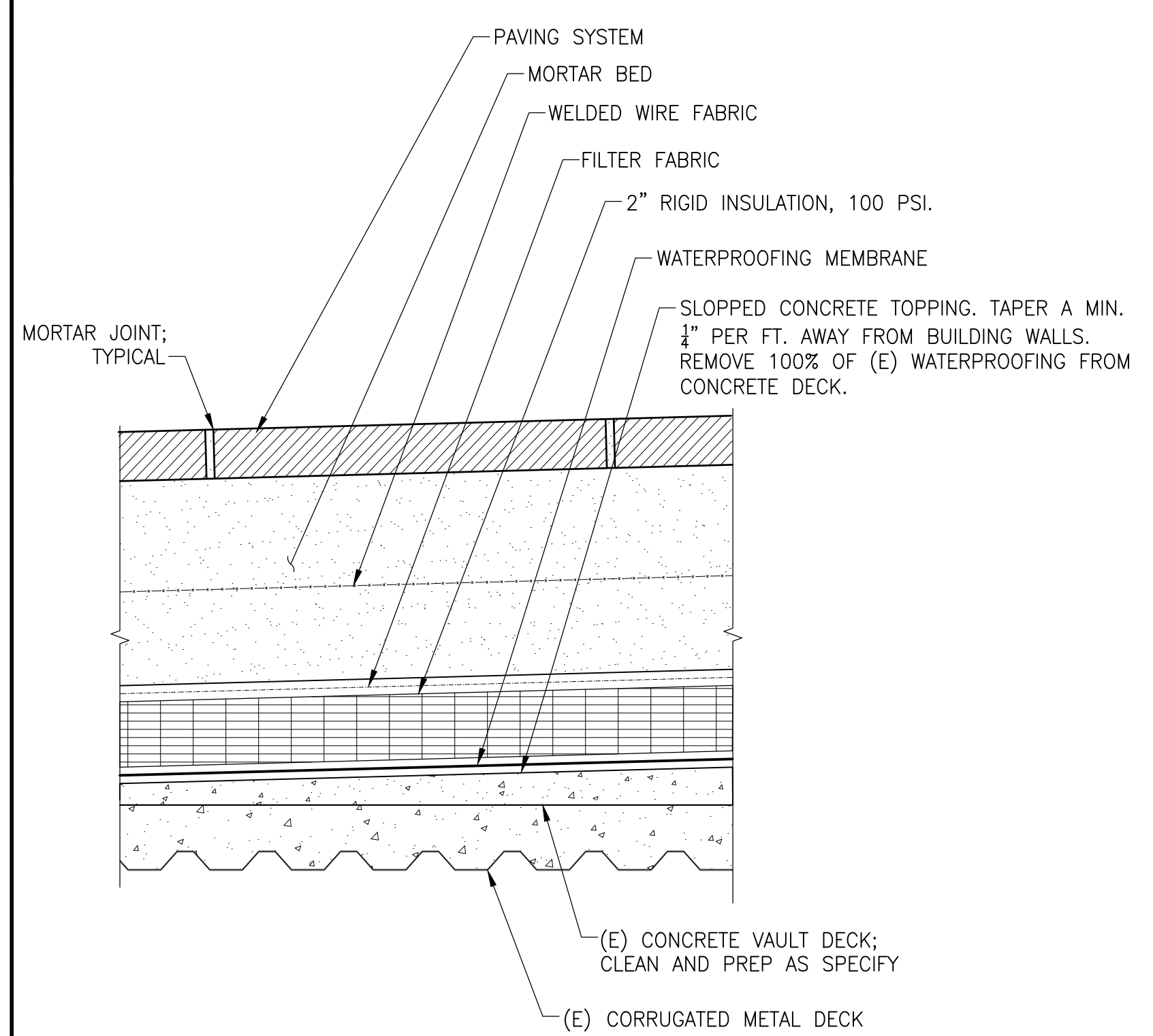
10 ENTRANCE AT TRADER JOE'S

NTS

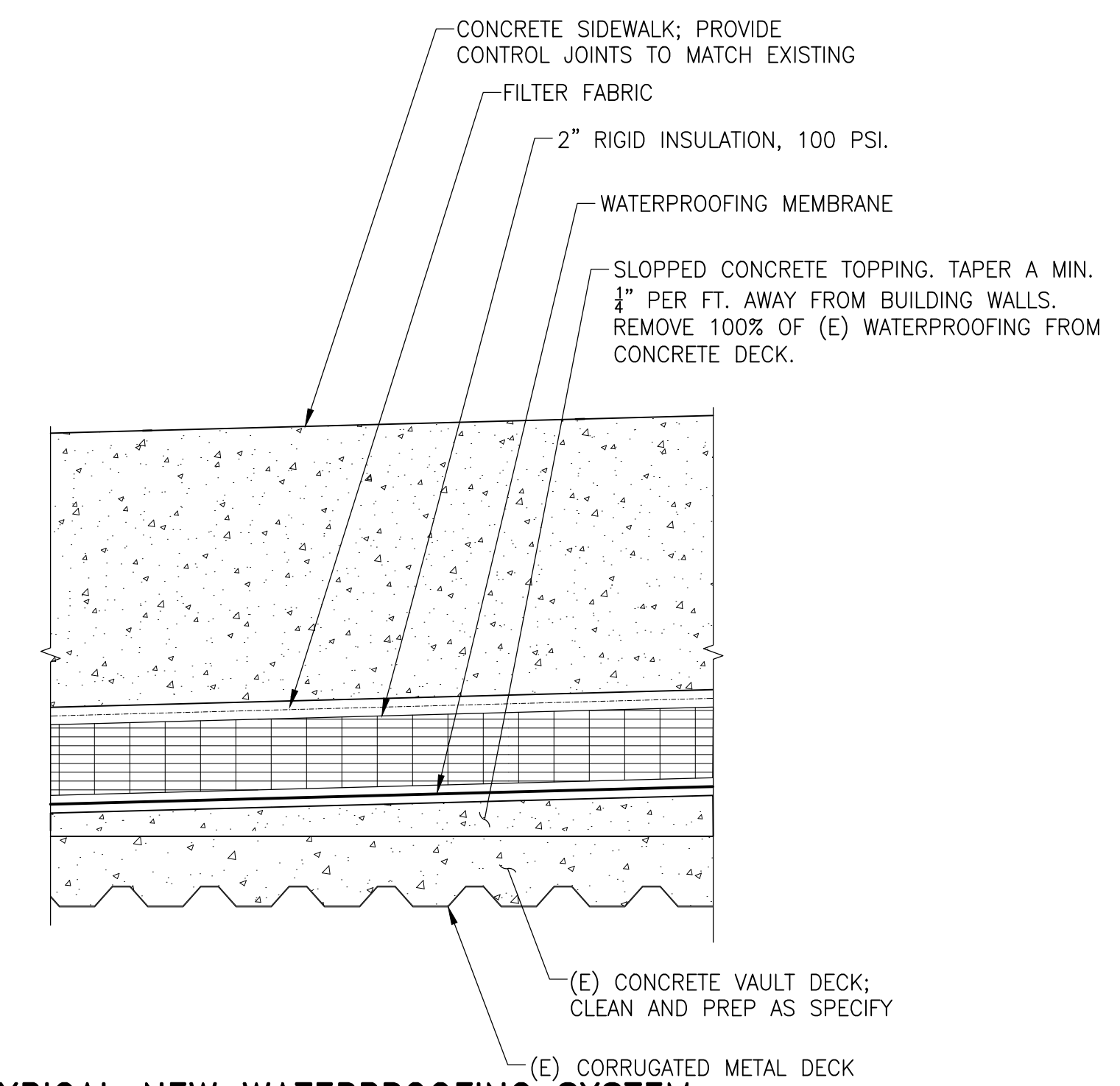


11 BOYLSTON STREET SIDEWALK FROM WEST

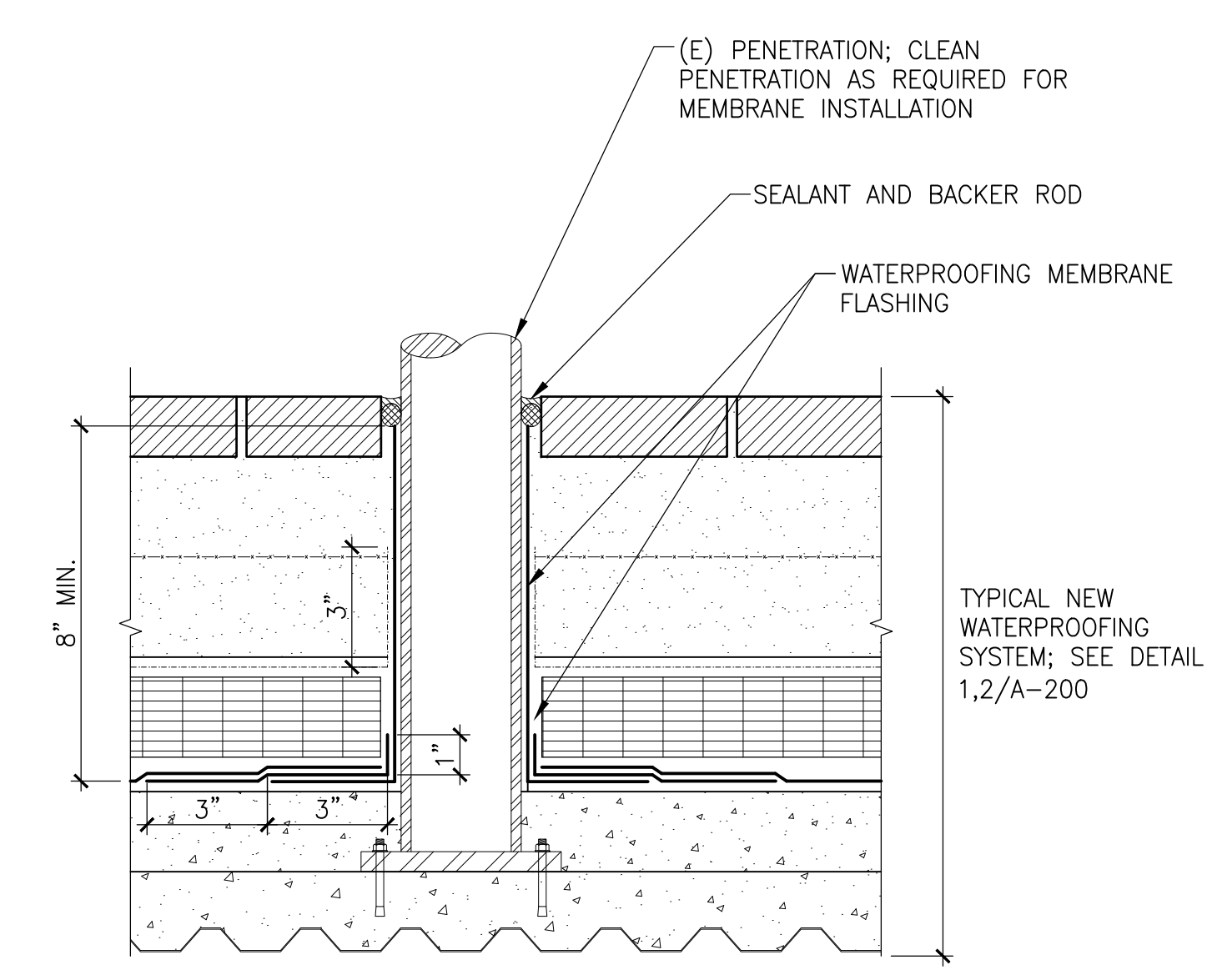
NTS



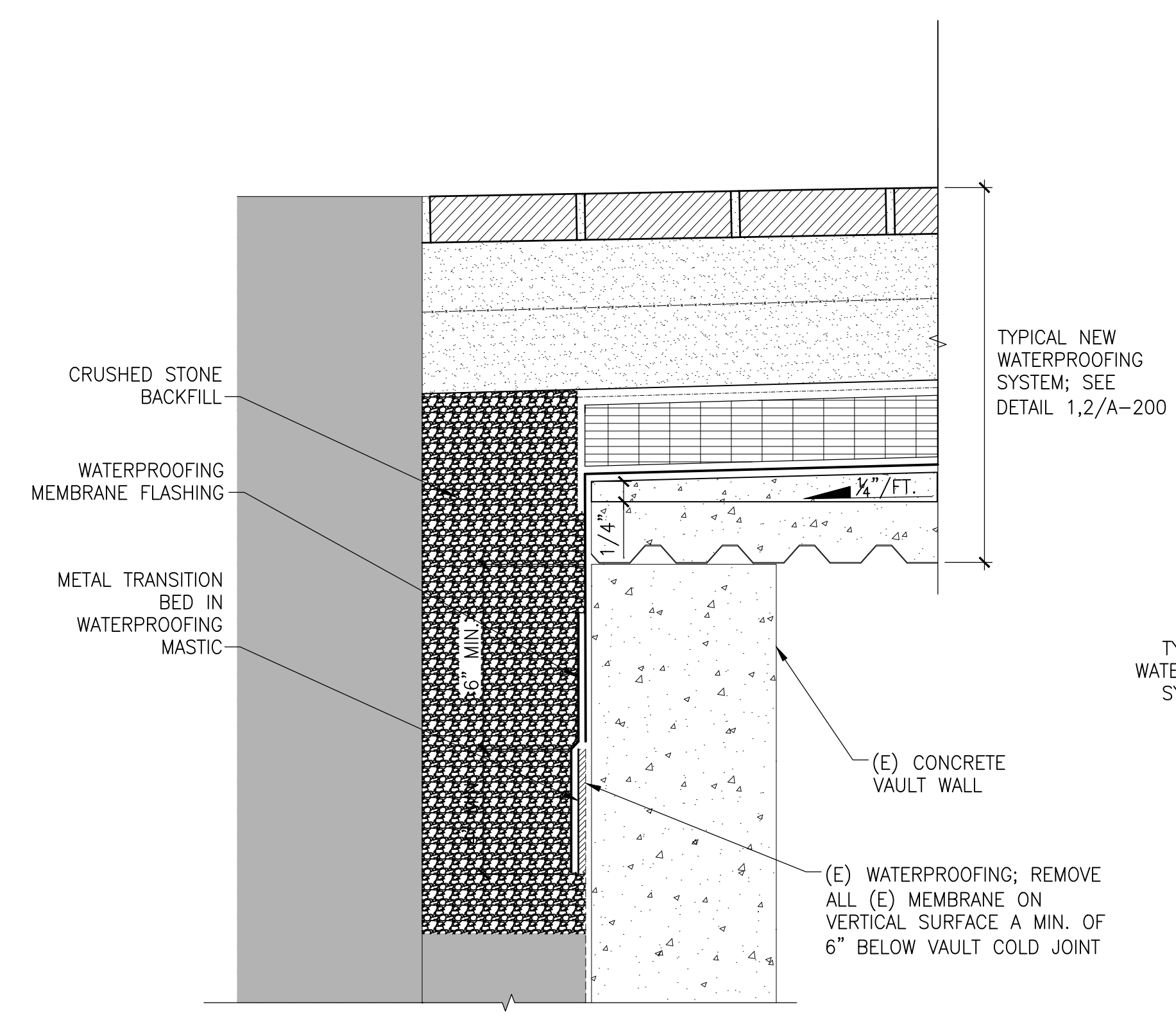
1 TYPICAL NEW WATERPROOFING SYSTEM
 NTS



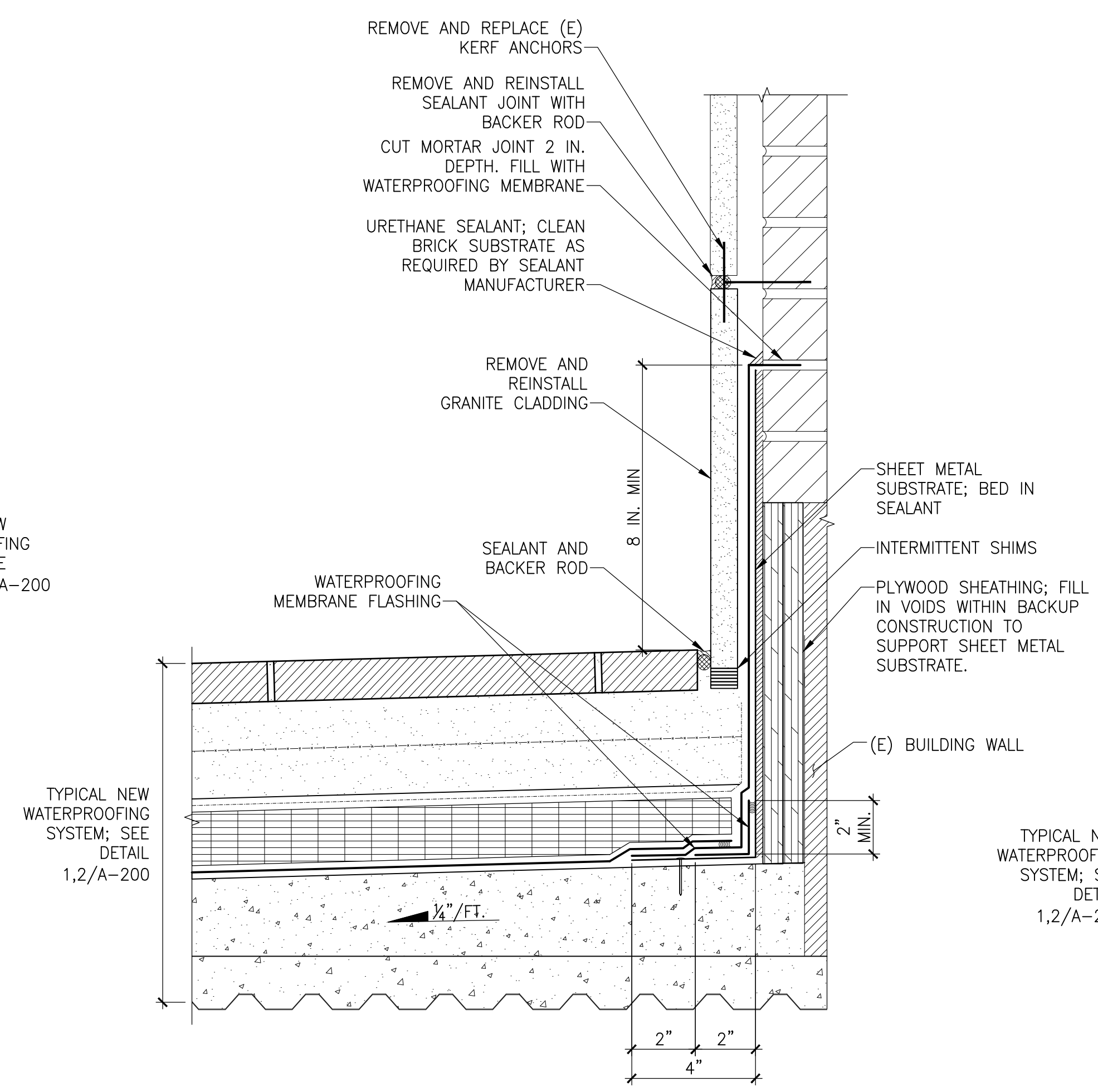
2 TYPICAL NEW WATERPROOFING SYSTEM - CONCRETE SIDE WALK
 NTS



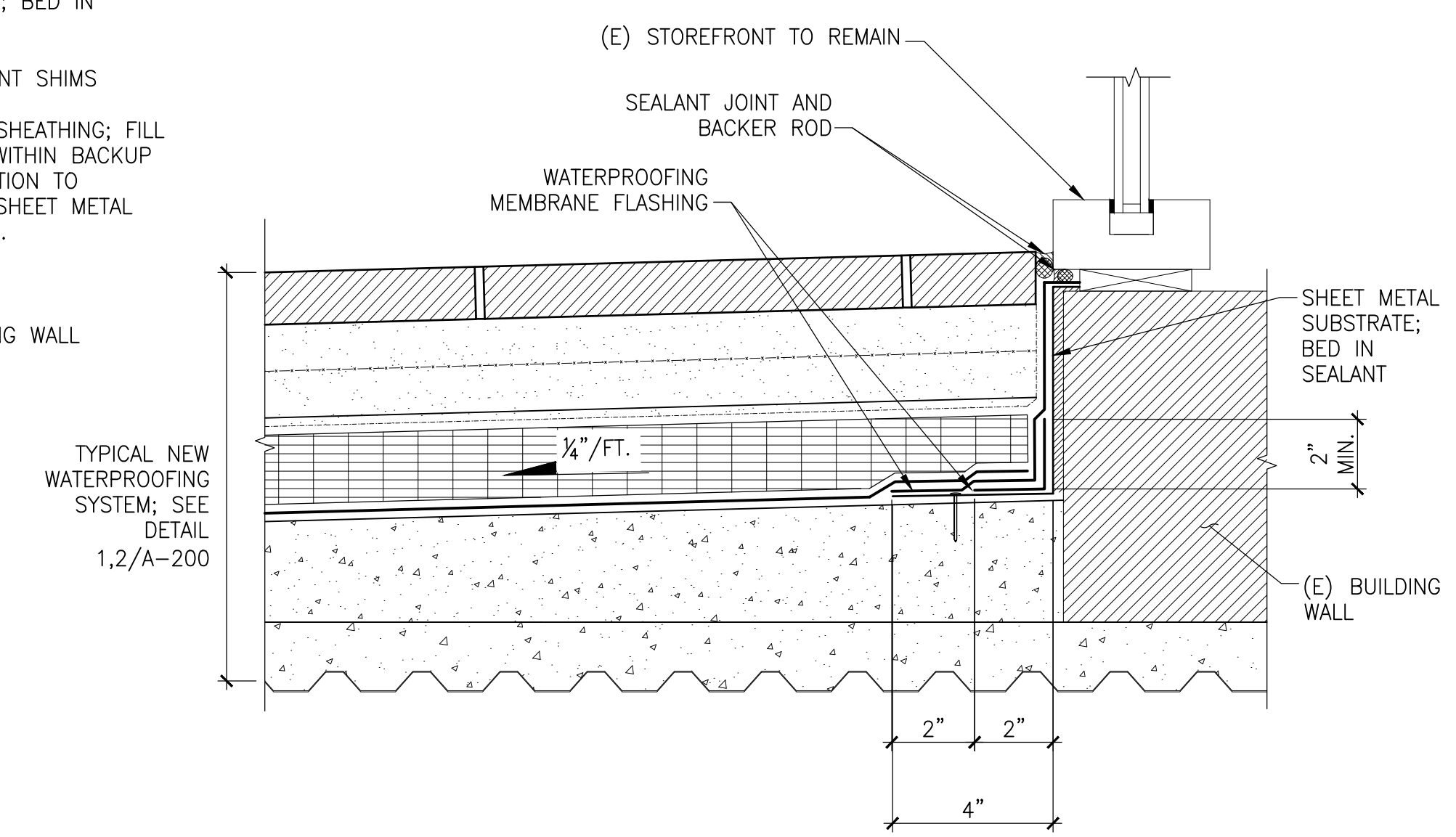
3 TYPICAL PENETRATION FLASHING DETAIL
 NTS



4 SECTION AT VAULT EDGE
 NTS



5 SECTION AT BASE OF BUILDING WALL
 NTS



6 SECTION AT STOREFRONT
 NTS

Consultant

**PROGRESS SET
 NOT FOR CONSTRUCTION**

No.	Date	Description	By

**SIDEWALK VAULT
 WATERPROOFING**

**899 BOYLSTON STREET
 BOSTON, MA**

Project

DETAILS

Drawing Title

Project No. 150481.01	Checked FJS	Date OCT 2016
Drawn AMB	Approved GGC	Scale AS NOTED

Drawing No.

A-200

Seal















699 Boylston Street - BRA Master Plan Paving



699 Boylston Street - BRA Master Plan Paving