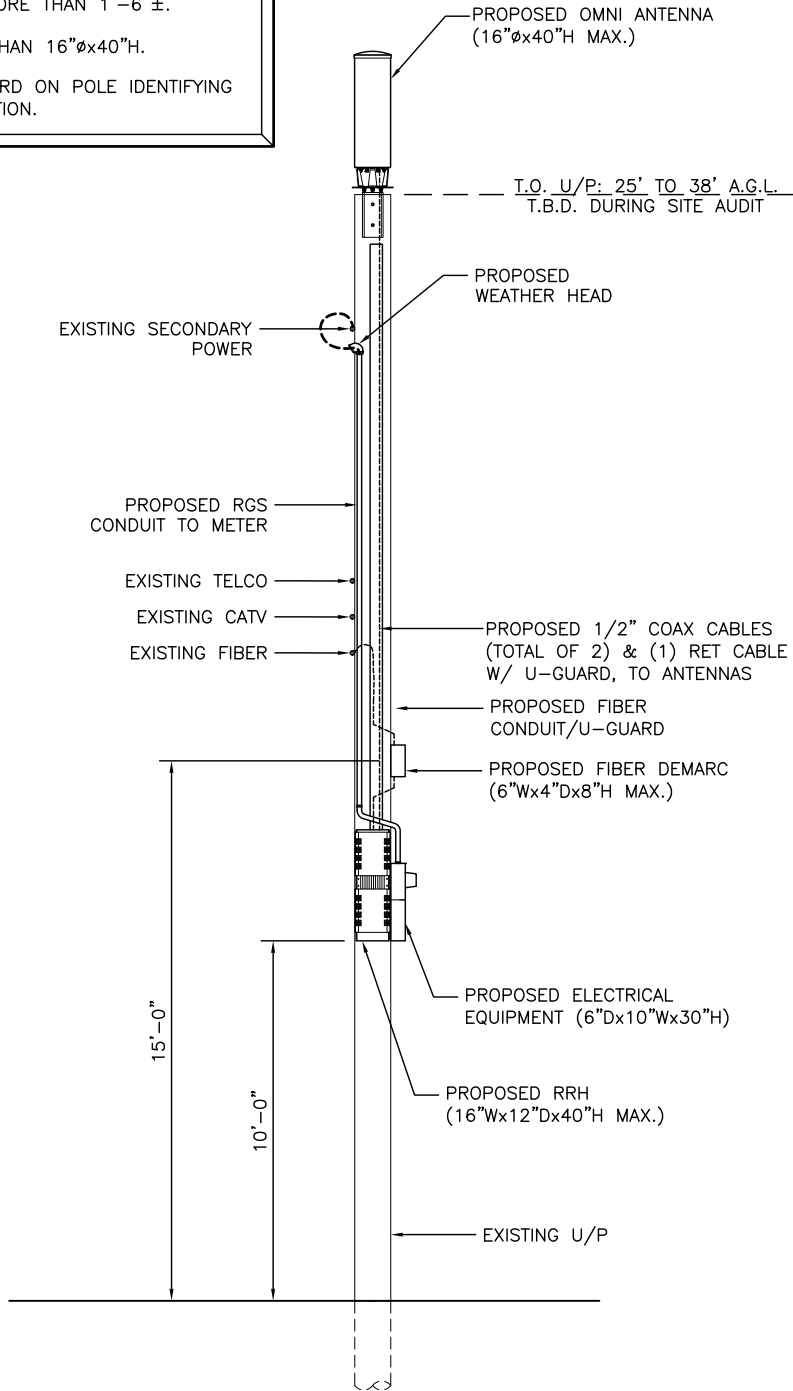


NOTES:

1. ALL DISTANCES, DIMENSIONS, LOCATIONS AND EQUIPMENT DESIGNATIONS AND SPECIFICATIONS ARE APPROXIMATE.
2. POLE REPLACEMENT HEIGHTS WILL VARY BASED ON REQUIRED ANTENNA HEIGHTS REQUESTED BY VERIZON WIRELESS.
3. RRH TO BE NO LARGER THAN 16"Wx12"Dx40"H & WILL NOT PROTRUDE FROM POLE MORE THAN 1'-6"±.
4. ANTENNA TO BE NO LARGER THAN 16"Øx40"H.
5. VZW WILL PLACE SMALL PLACARD ON POLE IDENTIFYING OWNERSHIP/CONTACT INFORMATION.



WOOD UTILITY POLE WITH ANTENNA TOP MOUNT

PREPARED BY:

NEXIUS
TRANSFORM YOUR BUSINESS... THROUGH WIRELESS

A&E OFFICE:
7A LYBERTY WAY
WESTFORD, MA 01886
1 (972) 755-1882

CLIENT:



400 FRIBERG PARKWAY
WESTBOROUGH, MA 01581
1 (508) 330-3300

SUBMITTALS

NO	DATE	DESCRIPTION	BY
A	03/22/16	FOR REVIEW	JM

SHEET NO:

SK-1



Existing Conditions: Wood utility pole.



Proposed Conditions: Wood utility pole with equipment & top mounted antenna.