



# East Boston



CITY OF BOSTON  
Martin J. Walsh, Mayor

# IMAGINE

BOSTON 2030  
[imagine.boston.gov](http://imagine.boston.gov)

# Here's what we heard in your neighborhood

Ferry service to different parts of the city (South Boston, Charlestown).  
—East Boston resident

Support for small businesses, schools and after school programs.  
—Madeleine, East Boston

Affordable housing near neighborhood workplaces.  
—Morgan, East Boston

Create extension of harbor walk, improve retail and... connect neighborhood to waterfront.. while also providing solution to address flooding.  
—Jordan, East Boston

East Boston residents emphasized the opportunity of Suffolk Downs and the East Boston waterfront, imagining them as vibrant districts that could retain the multiculturalism and affordability that residents love about the neighborhood.

There was tremendous interest and excitement about connecting East Boston to the rest of the city, particularly to downtown Boston (e.g. bike access, ferry), and increasing connectivity within East Boston (e.g., bike paths, the East Boston Greenway, multimodal streets, etc).

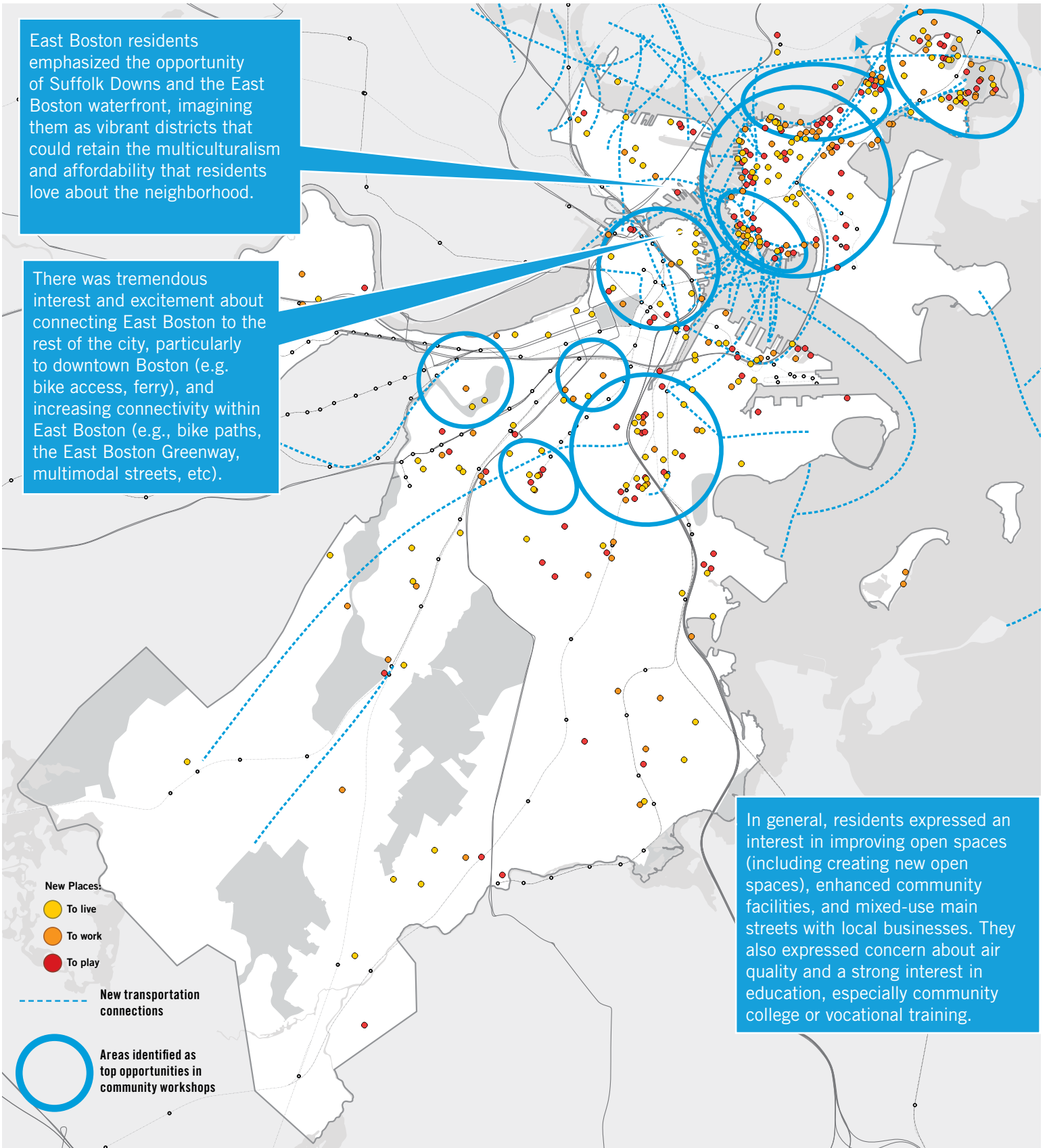
In general, residents expressed an interest in improving open spaces (including creating new open spaces), enhanced community facilities, and mixed-use main streets with local businesses. They also expressed concern about air quality and a strong interest in education, especially community college or vocational training.

#### New Places:

- To live
- To work
- To play

New transportation connections

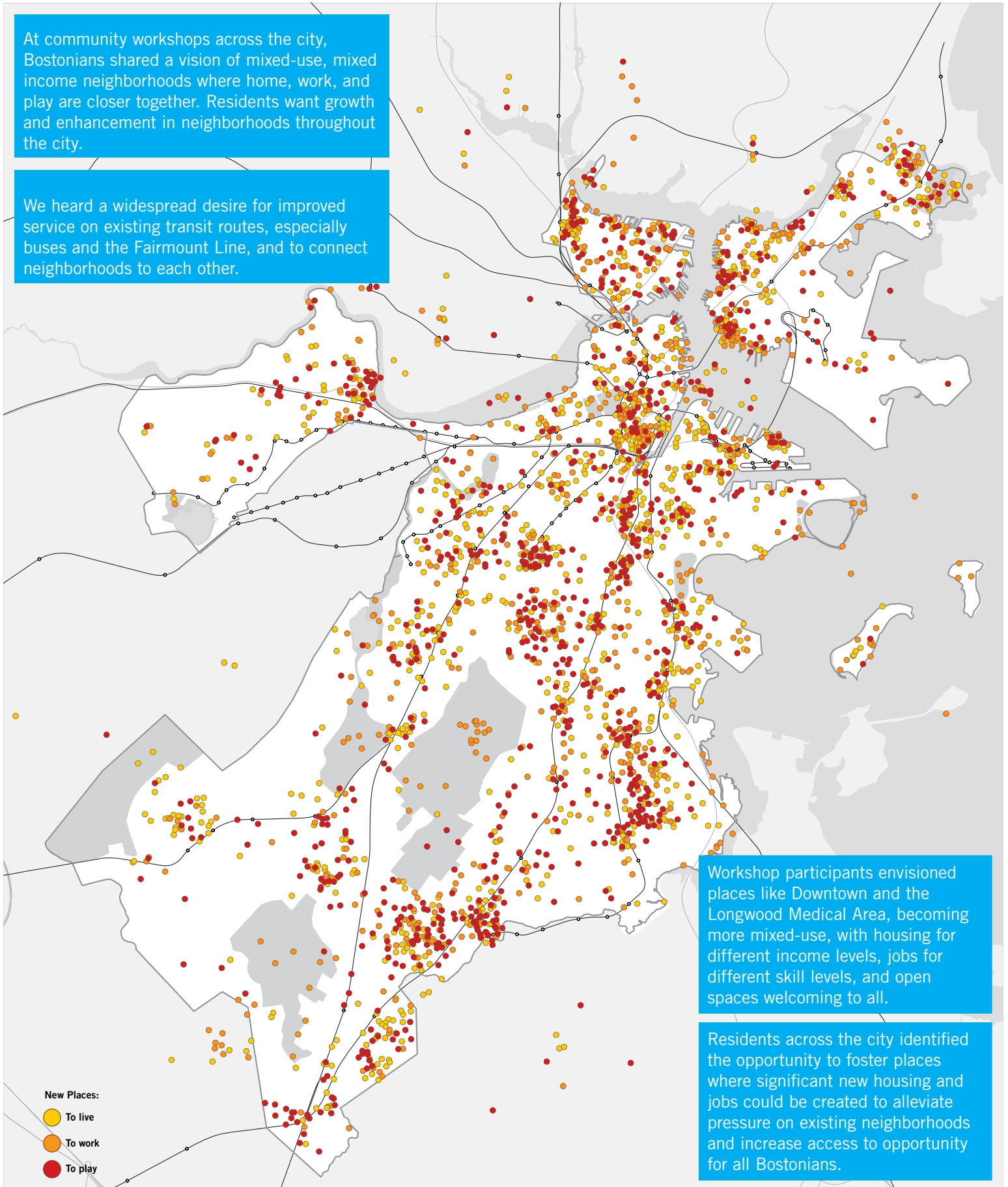
Areas identified as top opportunities in community workshops



# Here's what we heard citywide

At community workshops across the city, Bostonians shared a vision of mixed-use, mixed income neighborhoods where home, work, and play are closer together. Residents want growth and enhancement in neighborhoods throughout the city.

We heard a widespread desire for improved service on existing transit routes, especially buses and the Fairmount Line, and to connect neighborhoods to each other.



Workshop participants envisioned places like Downtown and the Longwood Medical Area, becoming more mixed-use, with housing for different income levels, jobs for different skill levels, and open spaces welcoming to all.

Residents across the city identified the opportunity to foster places where significant new housing and jobs could be created to alleviate pressure on existing neighborhoods and increase access to opportunity for all Bostonians.