

ST.

Part 1

STOUGHTON

ROAD

CITY OF BOSTON
NORTH BURIAL GROUND
 DORCHESTER
 Redrawn from 1900 Map
 Revised July 1986
 Historic Burying Grounds Initiative

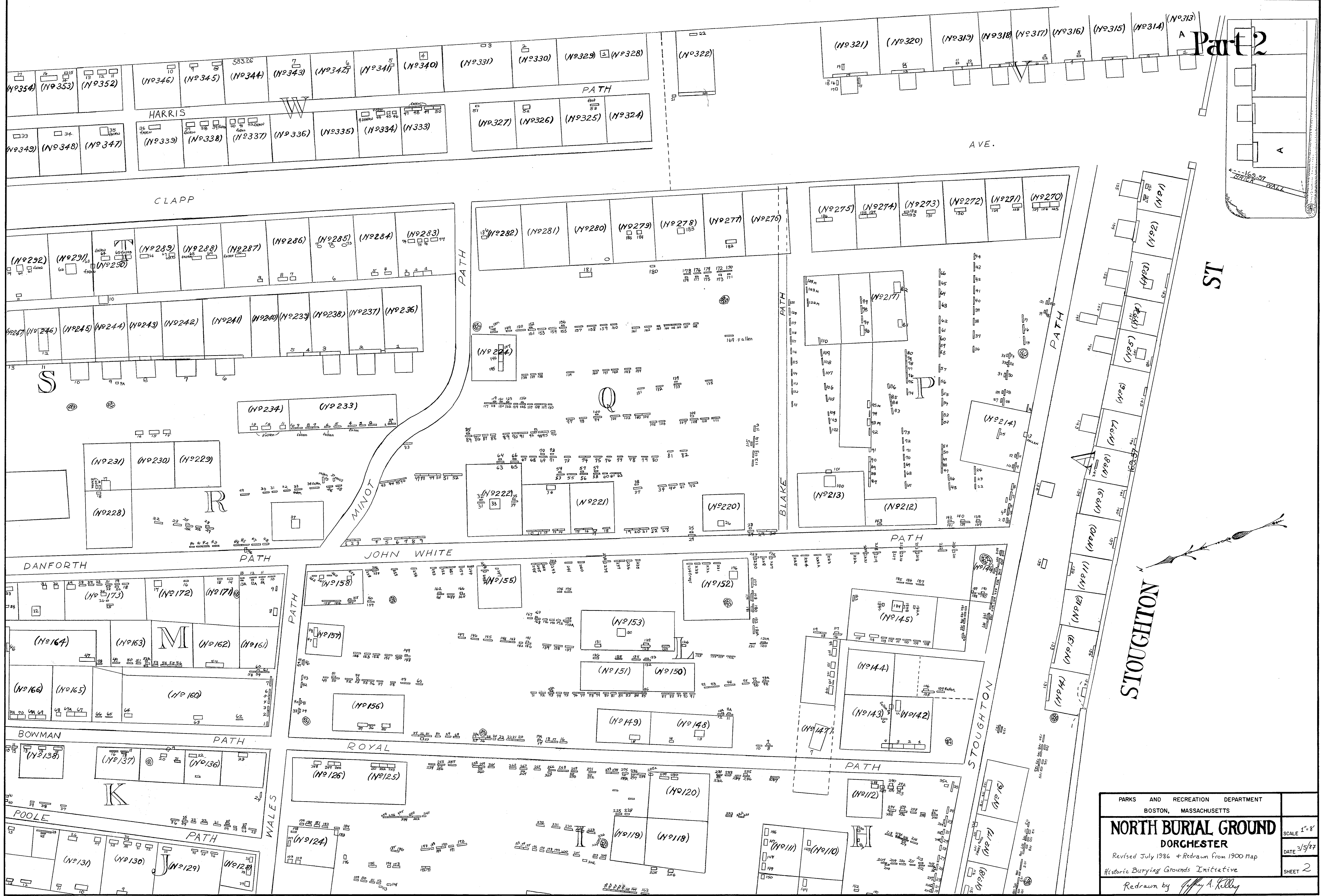
Area 134700. Sq.Ft.
 Scale 8 feet to an inch

Egyptian Style Entrance
 Built ca. 1910
 Reconstructed 1982

1" = 8'
 SCALE
 3/3/87
 DATE
 1
 SHEET

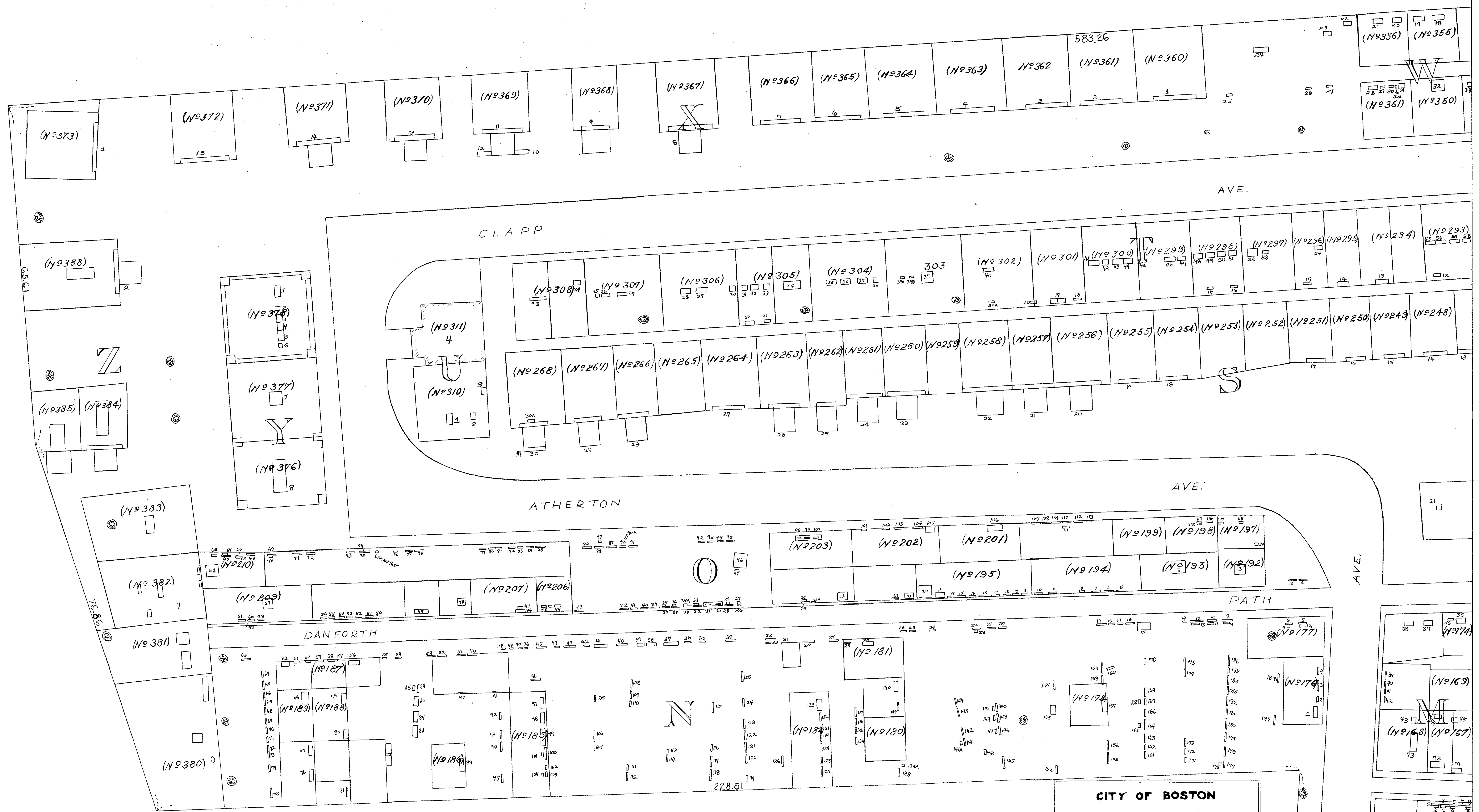
Redrawn by: Jeffrey A. Kelley

Part 2



PARKS AND RECREATION DEPARTMENT BOSTON, MASSACHUSETTS	
NORTH BURIAL GROUND DORCHESTER	
Revised July 1986 + Redrawn from 1900 Map	
Historic Burial Grounds Initiative	
Redrawn by <i>Patty A. Kelly</i>	
SCALE 1"=8'	DATE 3/5/87
SHEET 2	

Part 3



CITY OF BOSTON
NORTH BURIAL GROUND
DORCHESTER
Redrawn from 1900 Map
Revised July 1986
Historic Burying Grounds Initiative
Area 134700. Sq.Ft.
Scale 8 feet to an inch

APPROVED
CHIEF ENGINEER PARKS AND RECREATION DEPARTMENT

Redrawn by: Jeffrey A. Kelly

1" = 8'
SCALE
3/4/87
DATE
3
SHEET