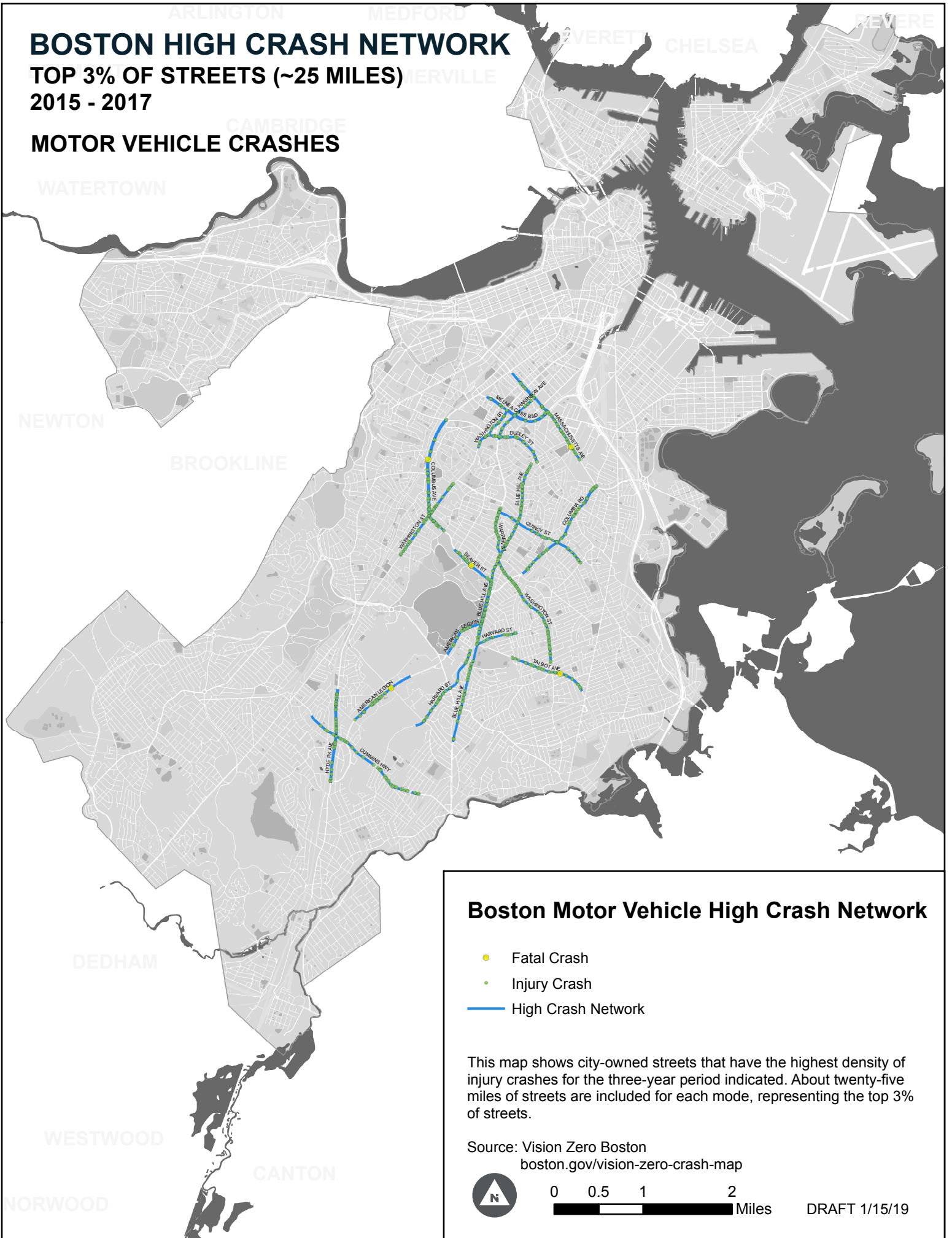


BOSTON HIGH CRASH NETWORK
TOP 3% OF STREETS (~25 MILES)
2015 - 2017
MOTOR VEHICLE CRASHES

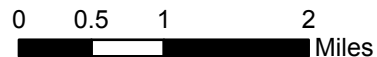


Boston Motor Vehicle High Crash Network

- Fatal Crash
- Injury Crash
- High Crash Network

This map shows city-owned streets that have the highest density of injury crashes for the three-year period indicated. About twenty-five miles of streets are included for each mode, representing the top 3% of streets.

Source: Vision Zero Boston
boston.gov/vision-zero-crash-map



DRAFT 1/15/19