

Norwell Radcliffe Open Space Community Meeting

July 25, 2023



This meeting is being recorded.



OVERVIEW

- **Introductions**
- **About the Grassroots Program**
- **Site Details**
- **Discussion: Comments and Q+A**
- **Next Steps**

INTRODUCTIONS



- **MOH/GrowBoston staff**
- **Elected officials**



Edgewater Food Forest, Mattapan



About the Grassroots Program

MAYOR'S OFFICE OF HOUSING



GROWBOSTON

Office of Urban Agriculture



East Cottage Farm, Roxbury

- **GrowBoston's goal is to increase food production and support local food producers in Boston, including gardeners, farmers, beekeepers, and more.**
 - *Support for innovative food production strategies*
 - *Technical assistance to farms and gardens*
 - *Educational resources*
 - *And more!*
- **Part of the Mayor's Office of Housing (MOH)**

GRASSROOTS PROGRAM

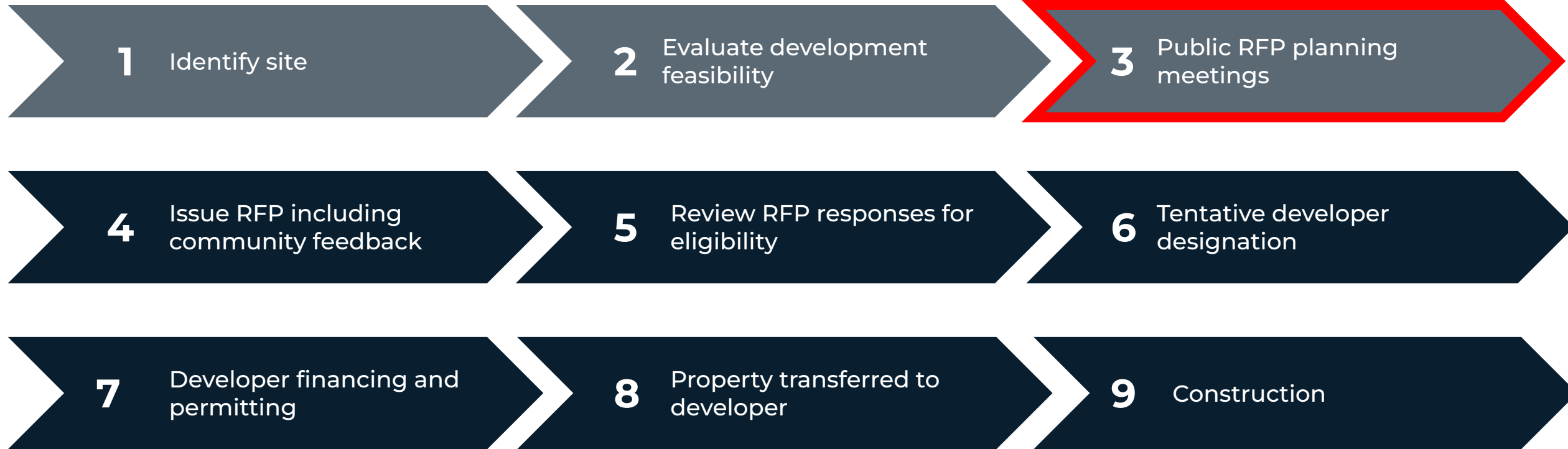
Program of GrowBoston



Savin Hill Wildlife Garden, Dorchester

- **Provides City-owned land, grant funds, and technical assistance to neighborhood groups and non-profits for:**
 - *Community gardens*
 - *Urban farms*
 - *Other open space uses*

MOH LAND DISPOSITION PROCESS



MOH PROCUREMENT PROCESS

Under Chapter 30B



- [M.G.L. c. 30B \(Chapter 30B\)](#) establishes an advertised proposal process that COB must follow in acquiring and disposing real estate property by purchase, sale or rental with a value greater than \$35,000.
- **Under Chapter 30B** we are required to conduct an **open and fair competitive process** that places all proposers on common footing, solicit information that will allow **manageable and meaningful comparisons of offers** and base decisions solely on the information solicited (what we've heard from the community).



About the Site

MAYOR'S OFFICE OF HOUSING



SITE DESCRIPTION AND MAP

- **4 parcels in Dorchester**

- **116 Norwell St**

- Parcel ID 1402341000

- **Unnumbered Norwell St**

- Parcel ID 1402340000

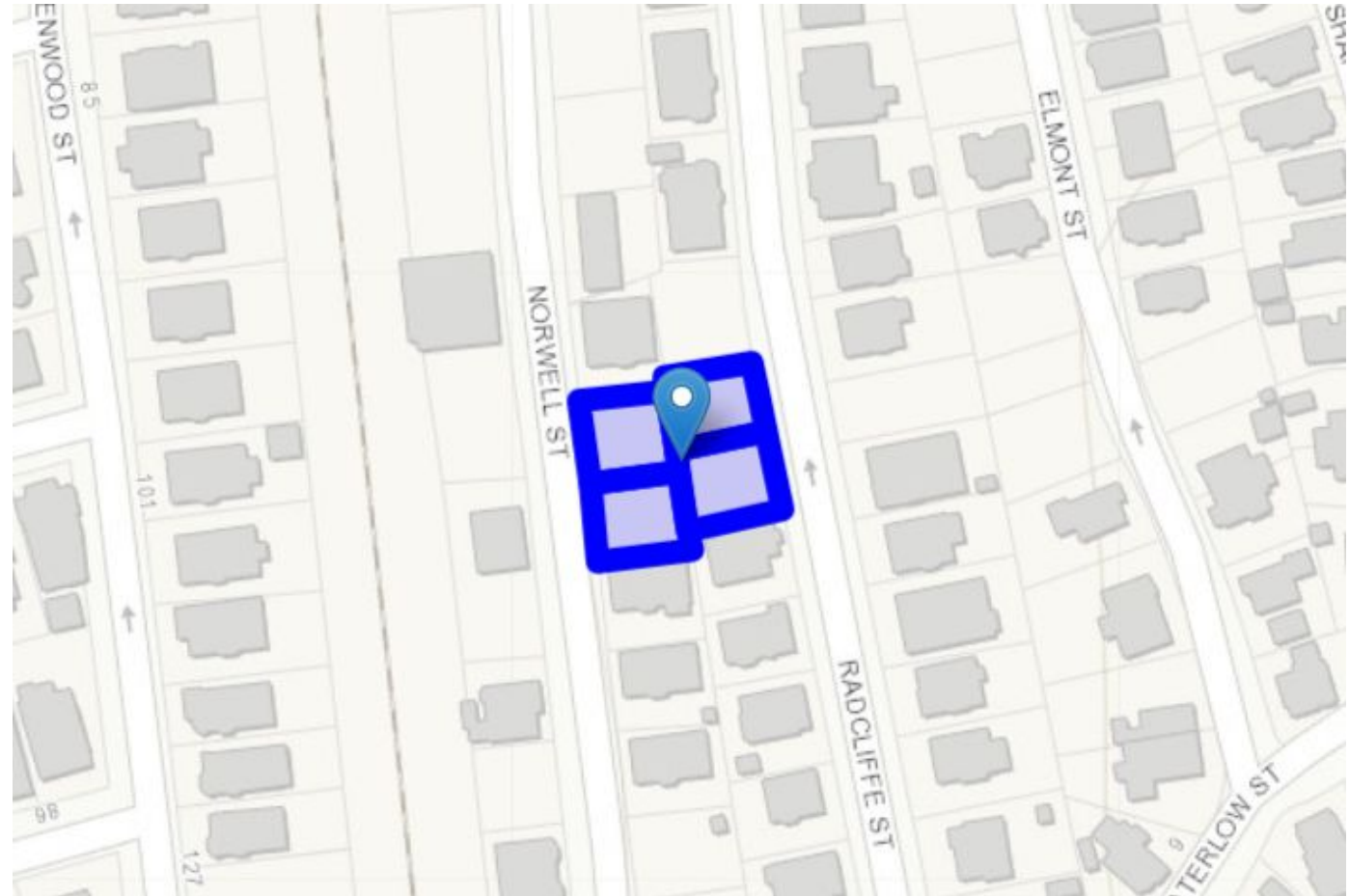
- **89 Radcliffe St**

- Parcel ID 1402357000

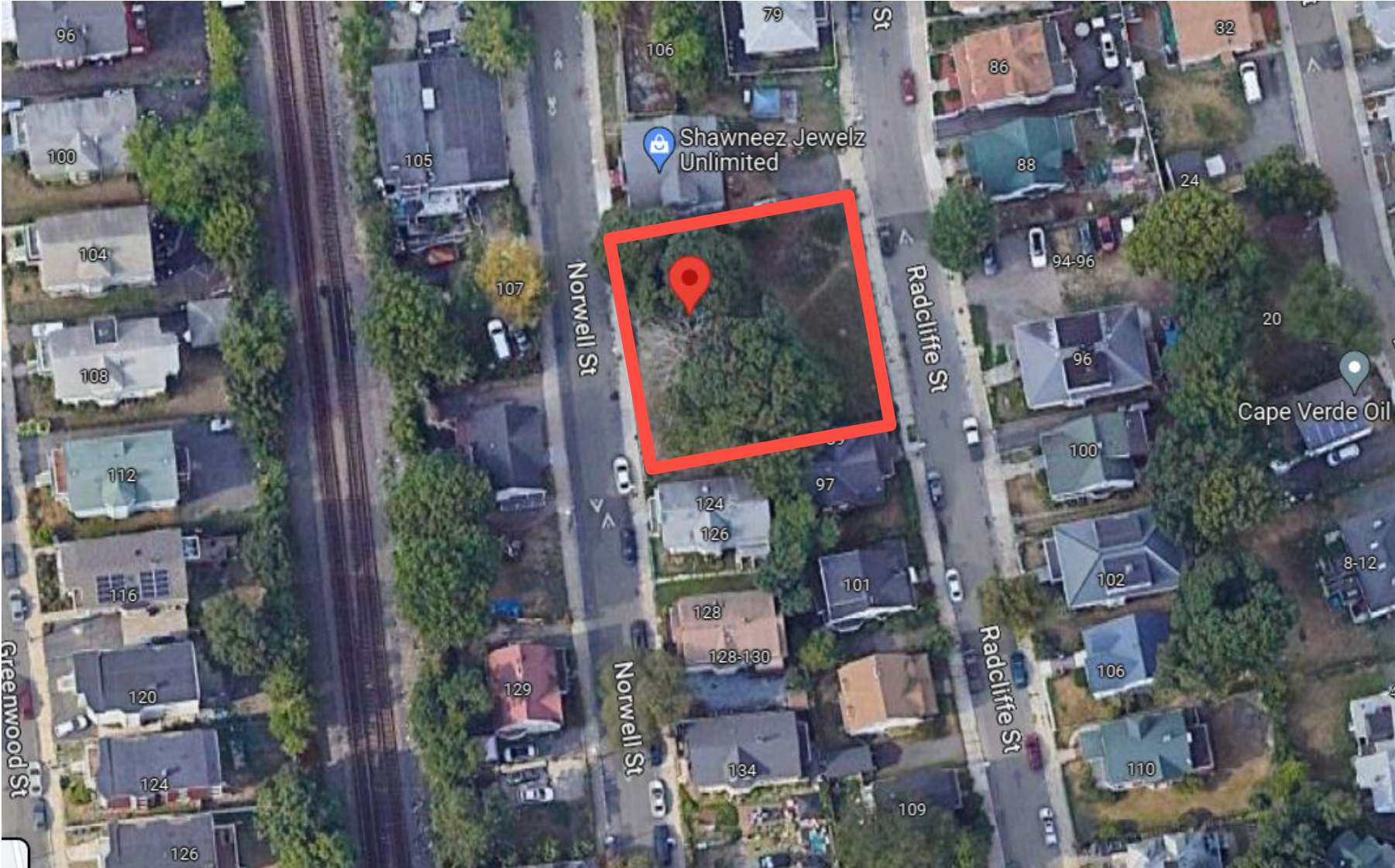
- **Unnumbered Radcliffe St**

- Parcel ID 1402358000

- **Total Size: 11,672 sq ft**



SATELLITE VIEW



SITE PHOTOS



View from Norwell Street



View from Radcliffe Street



Discussion: Comments and Q+A

MAYOR'S OFFICE OF HOUSING



PROPOSED FUTURE USE

Open Space

- Permanently protected as open space by deed restriction
- Preservation of existing healthy, mature trees
- Maintain sight lines throughout
- Addition of raised garden beds for community use

WE WANT TO HEAR FROM YOU!

Open Space

- Do you have any questions or concerns regarding the possible permanent use of this site for **open space**?
- Do you want to see this space preserved as open space into the future?
- Is there anything you would NOT want to see on this site?
- Any other comments, questions or concerns?



Next Steps

MAYOR'S OFFICE OF HOUSING



CONTACT INFORMATION

- **Theresa Strachila**
 - Program Manager, GrowBoston
 - theresa.strachila@boston.gov
 - 617-635-0267
- **Project website:**
 - bit.ly/norwell-radcliffe

